



Source: FHWA

Lewis River Bridge Construction Activities & Upcoming Work

August 4, 2022

Project Number:
WY NPS YELL 14(1)

FHWA Contact:
Boem Kim
boem.kim@dot.gov
(360) 605-7636

Project Partner:
NPS

Contractor:
M.A. DeAtley
Construction, Inc
Clarkston, WA

Notice to Proceed:
May 3rd, 2022

Fixed Completion Date:
October 15, 2024



U.S. Department
of Transportation
**Federal Highway
Administration**

Project Description

Located along the South Entrance Road in Yellowstone National Park, this project includes construction of a double span, 357-foot long steel girder bridge with cast-in-place concrete deck and 3 mechanically stabilized earth walls. Other work will include removal of existing Lewis River Bridge, stone masonry, roadway excavation and paving. This project is administered by the Federal Highway Administration in partnership with the National Park Service (NPS).

Work Schedule



Expect work 6:00 a.m. to 6:00 p.m., Monday through Saturday.



Subcontractor Hamilton Construction completed crane erection. Sheet piles have been driven to support existing south structure. Concrete jersey barriers have been placed on the southern end of the bridge. Excavation and mobilization of material continues. Steel pipe piles have been delivered to site.

Over the next two weeks work includes: Driving piles for the first abutment on the south side of the bridge. Excavation and mobilization of material. Soil and erosion control measures, as well as de-watering for construction on the north side of the bridge.

Traffic Delays



Anticipate up to 20 minute delays during construction activities. There will be a one-lane, two-way temporary traffic control zone facilitated by a temporary traffic signal system. Jersey barriers have been set up on the south side of the bridge. Will be a permanent one lane road. The existing alignment including pavement and bridge will be used while the new bridge is constructed. No road closures anticipated at this time.



The Storm Water Pollution Prevention Plan (SWPPP) is available for viewing upon request. See also SWPPP sign posted at project site.

Project Website: <https://highways.dot.gov/federal-lands/projects/wy/nps-yell-14-1>

Western Federal Lands Highway Division



Lewis River Bridge Construction Activities & Upcoming Work

Source: FHWA

August 4, 2022

Project Number:
WY NPS YELL 14(1)

FHWA Contact:
Boem Kim
boem.kim@dot.gov
(360) 605-7636

Project Partner:
NPS

Contractor:
M.A. DeAtley
Construction, Inc
Clarkston, WA

Notice to Proceed:
May 3rd, 2022

Fixed Completion Date:
October 15, 2024

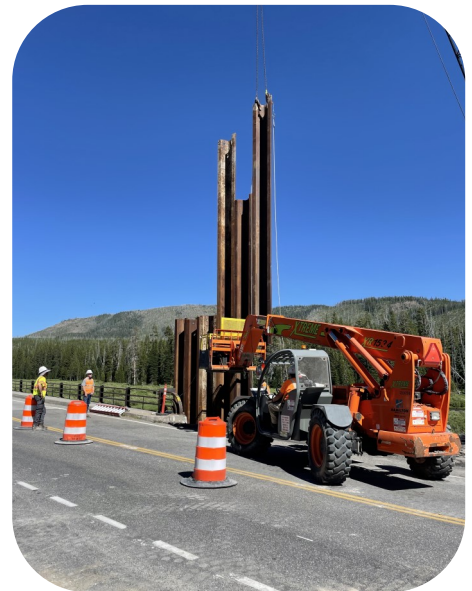


View of the project looking North. (Notice jersey barrier)

Source: FHWA



Source: FHWA



Source: FHWA

Crane and sheet pile driving.



U.S. Department
of Transportation
**Federal Highway
Administration**

Project Website: <https://highways.dot.gov/federal-lands/projects/wy/nps-yell-14-1>

Western Federal Lands Highway Division