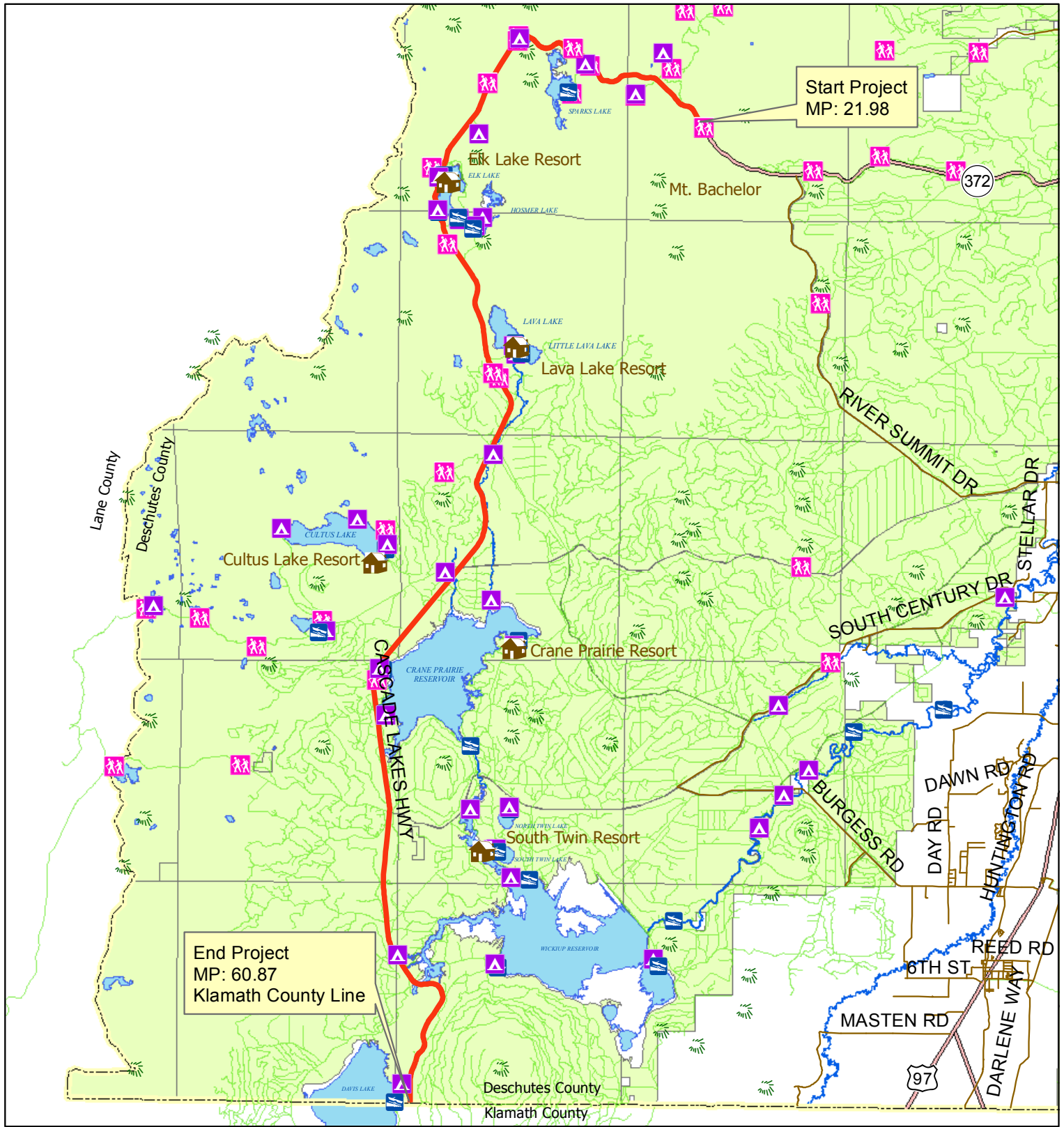


Cascade Lakes Hwy. Corridor Study



Legend

- | | |
|-----------------------------|----------------------------------|
| Bicycle Facilities | County Routes |
| Features of Interest | USFS Roads |
| BOAT LAUNCH | County Line |
| CAMPGROUND | River |
| RESORT | Lake |
| TRAILHEAD | USFS - Deschutes National Forest |
| MOUNTAIN PEAK | |



Printed:
June 22, 2016

John Anderson, GIS Analyst
 Phone: (541) 322-7102
 Email: john.anderson@deschutes.org
 Address: 61150 SE 27th St
 Bend, OR 97702

Road Department

The information on this map was derived from digital databases on Deschutes County's G.I.S. Care was taken in the creation of this map. Deschutes County cannot accept any responsibility for errors, omissions, or positional accuracy and, therefore, there are no warranties which accompany this product. However, notification of any errors will be appreciated.