



U.S. Department
of Transportation
**Federal Highway
Administration**

400 Seventh St., S.W.
Washington, D.C. 20590

August 10, 2005

In Reply Refer To: HSA-10/CC-86A

Mr. Jerry Emerson, P.E.
BRIFEN USA, Incorporated
P.O. Box 94220
Oklahoma City, OK 73143

Dear Mr. Emerson:

In your July 21, 2005, letter you requested Federal Highway Administration's acceptance of an optional end anchor terminal for the TL-4 Brifen Wire Rope Safety Fence (WRSF). As shown on the attached drawing, this terminal, labeled WRGT-RD, utilizes several components from the crashworthy TL-3 Brifen WRGT end anchor terminal that was accepted by this office on January 28, 2004, (refer to acceptance letter CC-86), but does not require the additional posts used to transition from the TL-3 end anchor terminal to your TL-4 WRSF design that was accepted for use on March 27, 2005, (refer to acceptance letter B-82B). The same 48" diameter concrete anchor and steel anchor frame are used; the first post is placed in a socketed foundation and set at an angle of 79 degrees to horizontal, and the next three downstream posts are spaced at 6'-6" as in the TL-3 WRGT terminal. The overall length of the complete terminal is 27'-10" with the length of need point assumed to be just beyond the fourth post, or approximately 30' from the end anchorage. Rope heights are 36-1/2" to the top rope, with the lower ropes at 30-1/2", 24-1/2", and 18-1/2". All posts beyond post number one are standard TL-4 line posts.

Your letter indicated that this end anchor terminal is intended for use on downstream ends of the TL-4 Brifen WRSF at locations where head-on impacts from opposite-direction traffic are unlikely, behind barriers on approaches to bridges, or as an upstream anchor at locations shielded from head-on impacts from adjacent traffic, such as behind the departure ends of bridges. Provided this terminal is used only in locations where head-on impacts are not likely to occur, as noted above, the Brifen WRGT-RD end anchor terminal is acceptable for use with your TL-4 system on the National Highway System when specified by the contracting agency.

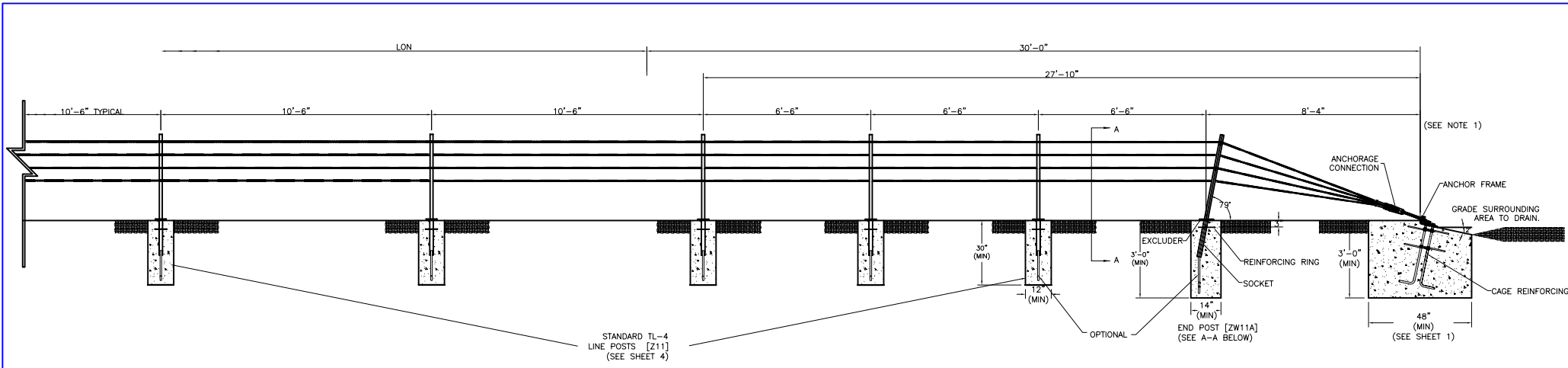
Sincerely yours,

/original signed by/

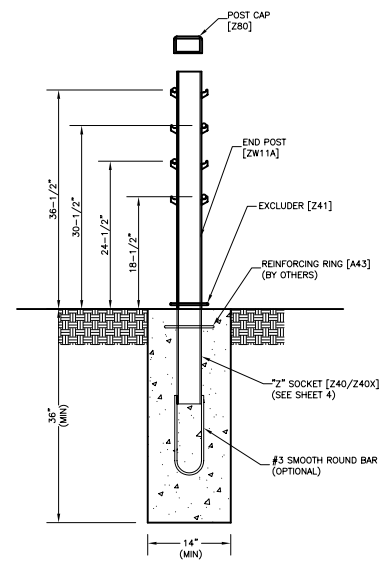
John R. Baxter, P.E.
Director, Office of Safety Design
Office of Safety

Enclosure





WRGT-RD TERMINAL
(SEE NOTE 1)



END POST & FOUNDATION DETAIL
SECTION A-A

The information herein is proprietary to BRIFEN USA, and shall not be disclosed, duplicated or used otherwise without the express written consent of BRIFEN USA, Inc.

<h1 style="text-align: center;">BRIFEN★USA INC.</h1>			WRGT-RD END TERMINALS (FOR TL-4 SYSTEM)		
			Date	Drawn By	Scale
1.	8.01.05	MW	7.21.05	Manita Workman	None
2.	8.08.05	MW	VERSION 8.6		Sheet No.
3.	8.10.05	MW	VERSION 8.6		11 of 11
4.			Dwg. No.		WRSF-05-211a
5.					

NOTE:
 1. MAY BE USED ON ANY TL-4 WRSF LOCATION SHIELDED FROM TRAFFIC (EXITING ENDS OF BRIDGES, ETC), OR WITHIN HORIZONTAL CLEAR ZONE ON DOWNSTREAM ENDS ONLY IF HEAD-ON IMPACTS ARE UNLIKELY.
 2. FOR ADDITIONAL INFORMATION, CONTACT BRIFEN USA, INC. AT 1-866-427-4336 TOLL FREE.