



Source: FHWA

June 14, 2021

**Project Number:**

MT NPS GLAC 14(4)

MT GLACIER 14(1)

**FHWA Contact:**

Carissa Yedica

Carissa.yedica@dot.gov

(360)619-7650

**Project Partners:**

Glacier National Park

Blackfeet Nation

**Contractor:**

Missouri River Contractors

Helena, MT

**Notice to Proceed:**

January 13, 2020

**Fixed Completion Date:**

November 19, 2021



U.S. Department  
of Transportation

**Federal Highway  
Administration**

**MANY GLACIER ROAD  
Construction Activities & Upcoming Work**

**Project Description:**

This project is being administered by the Federal Highway Administration Western Federal Lands Highway Division, in partnership with the Blackfeet Nation and Glacier National Park. The project will rehabilitate approximately 12 miles of Many Glacier Road from Many Glacier Hotel Parking Area inside Glacier National Park to the intersection in Babb, MT on the Blackfeet Indian Reservation. In general, the project will closely follow the existing horizontal and vertical alignments of Many Glacier Road and reconstruction will provide a consistent 22 foot-wide paved surface. This project includes improved base material beneath the roadway, installing new asphalt concrete pavement surfacing, and replacing failed, undersized, or otherwise deficient culverts. The project also contains masonry and minor bridge work within Glacier National Park and turnout and parking area reconstructions throughout the project limits.



**Surface Conditions:**

The current road conditions on the Reservation consist of graded asphalt millings and areas of rock backfill material. The current road conditions in the Park consist of graded gravel/milling surface up to the Entrance Station. Past the Entrance Station, there is pavement with occasional asphalt patches where culverts or sub-excavations have been installed. Turnouts are closed to the public. The public should expect rough dirt road driving conditions.



**Current and Upcoming Work:**

The Many Glacier Hotel Parking Lot and Loop Road are open to the public. The current focus within the Park is to prepare turnouts for pavement and pave the overlay on the mainline road.

On the Reservation, road conditions will be maintained to provide safe travel throughout the project. Nightwork will be taking place along this portion of the project, which will involve sub-excavation of the road.



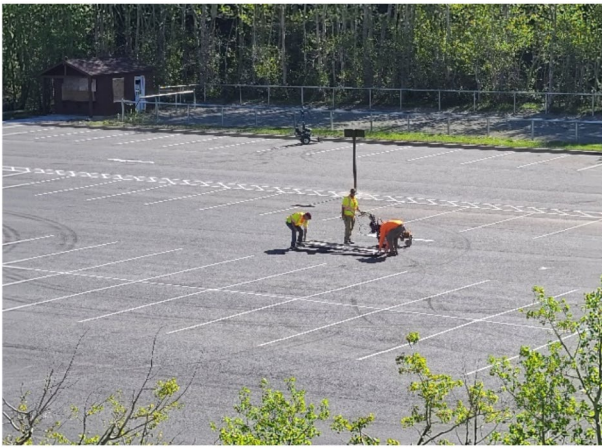
**Traffic Delays:**

During the day, flaggers and a pilot car are guiding traffic through work operations. Delays will be limited to a maximum of 40 minutes. Night work will be resuming this week, starting the night of Monday, June 14<sup>th</sup>. Night work will take place Monday through Thursday nights. There will be closures with maximum 3 hour delays from 10pm to 5am.

**\*The Storm Water Pollution Prevention Plan (SWPPP) for this project is available for viewing at the Project Office of the Contractor at the Tribe Babb Pit. See SWPPP information posted at the start of the project.**

**Project Website:** <https://highways.dot.gov/federal-lands/projects/mt/nps-glac-14-4>

**Western Federal Lands Highway Division**



**Crews Paint the Parking Lot in Preparation for Opening Day**

**Tourists Fill the Parking Lot at the Reopened Many Glacier Hotel**



**Construction Signs Warn and Guide Public Traffic Through the Project**



**The MSE Retaining Wall on Option X is Complete**



**Finishing Touches are put on the Rock Wall Near the Hotel**