



MANY GLACIER ROAD

Construction Activities & Upcoming Work

May 17, 2021

Project Number:

MT NPS GLAC 14(4)
MT GLACIER 14(1)

FHWA Contact:

Carissa Yedica
Carissa.yedica@dot.gov
(360) 619-7650

Project Partners:

Glacier National Park
Blackfeet Nation

Contractor:

Missouri River Contractors
Helena, MT

Notice to Proceed:

January 13, 2020

Fixed Completion Date:

November 19, 2021



U.S. Department
of Transportation

**Federal Highway
Administration**

Project Description:

This project is being administered by the Federal Highway Administration Western Federal Lands Highway Division, in partnership with the Blackfeet Nation and Glacier National Park. The project will rehabilitate approximately 12 miles of Many Glacier Road from Many Glacier Hotel Parking Area inside Glacier National Park to the intersection in Babb, MT on the Blackfeet Indian Reservation. In general, the project will closely follow the existing horizontal and vertical alignments of Many Glacier Road and reconstruction will provide a consistent 22 foot-wide paved surface. This project includes improved base material beneath the roadway, installing new asphalt concrete pavement surfacing, and replacing failed, undersized, or otherwise deficient culverts. The project also contains masonry and minor bridge work within Glacier National Park and turnout and parking area reconstructions throughout the project limits.



Surface Conditions:

The current road conditions on the Reservation consist of graded asphalt millings and areas of rock material. The current road conditions in the Park consist of graded gravel/milling surface up to the Entrance Station. Past the Entrance Station, there is pavement with occasional asphalt patches where culverts or sub-excavations have been installed.



Current and Upcoming Work:

Pavement is set to begin inside park boundaries. The Entrance Station will be paved first, with the Many Glacier Hotel Parking Lot following shortly after. Turnout areas within the park will then be reconstructed. Signs and striping will also be installed.

On the Reservation, road conditions will be maintained to provide safe travel throughout the project. Subexcavated areas will continue to be built back up to level grade.



Traffic Delays:

Many Glacier Road is currently closed to public traffic until May 28th, 2021. Construction continues and will provide access for Glacier National Park administrative travel and residential travel. Windows of 7am-8am, 11am-1pm, and 5pm-7pm are scheduled to allow for passage through the project with minimal delay. Construction will be taking place on Saturdays and Sundays with minimal delay to traffic. There will also be night closures with maximum 3 hour delays to residential and administrative traffic possible for the next month.

***The Storm Water Pollution Prevention Plan (SWPPP) for this project is available for viewing at the Project Office of the Contractor at the Tribe Babb Pit. See SWPPP information posted at the start of the project.**

Project Website: <https://highways.dot.gov/federal-lands/projects/mt/nps-glac-14-4>

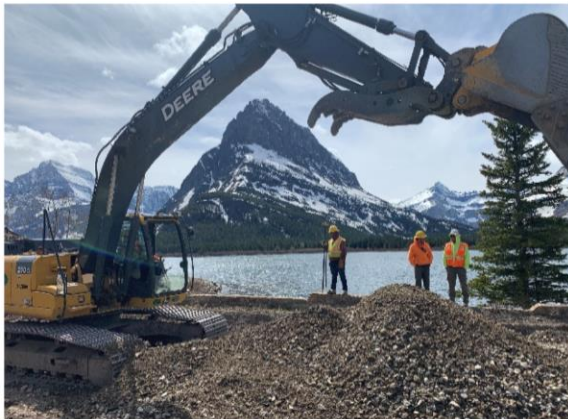
Western Federal Lands Highway Division



The Many Glacier Hotel Parking Lot is Prepared for Pavement



The Loop Road at Many Glacier Hotel is Prepared for Pavement



Grinnell Point Looms in the Background of Subexcavation Work Near the Many Glacier Hotel



Preparing to Widen the Road at the Entrance Station



Geotextile and Reinforcing Geogrid are placed in Subexcavations to Strengthen the Road Foundation