



Bridges & Structures  
2023 CFL Annual A/E Meeting

# Bridges and Structures

---

- Project Start-up:
  - Assigning a Bridge Rep
    - Introduce Team
  - Review of A/E Bridge SOW & Budget
    - LIST ASSUMPTIONS (B2, B3, walls, etc.)
  - Set up “RG” numbers for every structure
  - Sample Plans



# Bridges and Structures

---

- Project Scoping
  - Important to get key info from bridge owner
    - Design criteria basis
    - Is load rating needed?
    - Special aesthetics
    - Special design vehicles
- Document decisions for future reference!

# Bridges and Structures

---

- Project Design
  - Information on CFL Website
    - Bridge plan checklist
    - Bridge design criteria
    - Bridge drafting standards
    - Load rating summary
  - Early Coordination is key

# Bridges and Structures

---

- Project Design Deliverables (through PM)
  - Structure selection report/memo
  - PS&E
  - Design and Independent check notes
  - Load rating (if applicable)
  - Structural quantities and unit cost analysis

# Bridges and Structures

---

- Project Design Deliverables (cont.)
  - CADD and PDF bridge drawings with reference files detached.
  - A/E Contractor logo and PE stamp on all plan sheets
  - PE Notebook – include construction narrative & critical assumptions of design

# Bridges and Structures

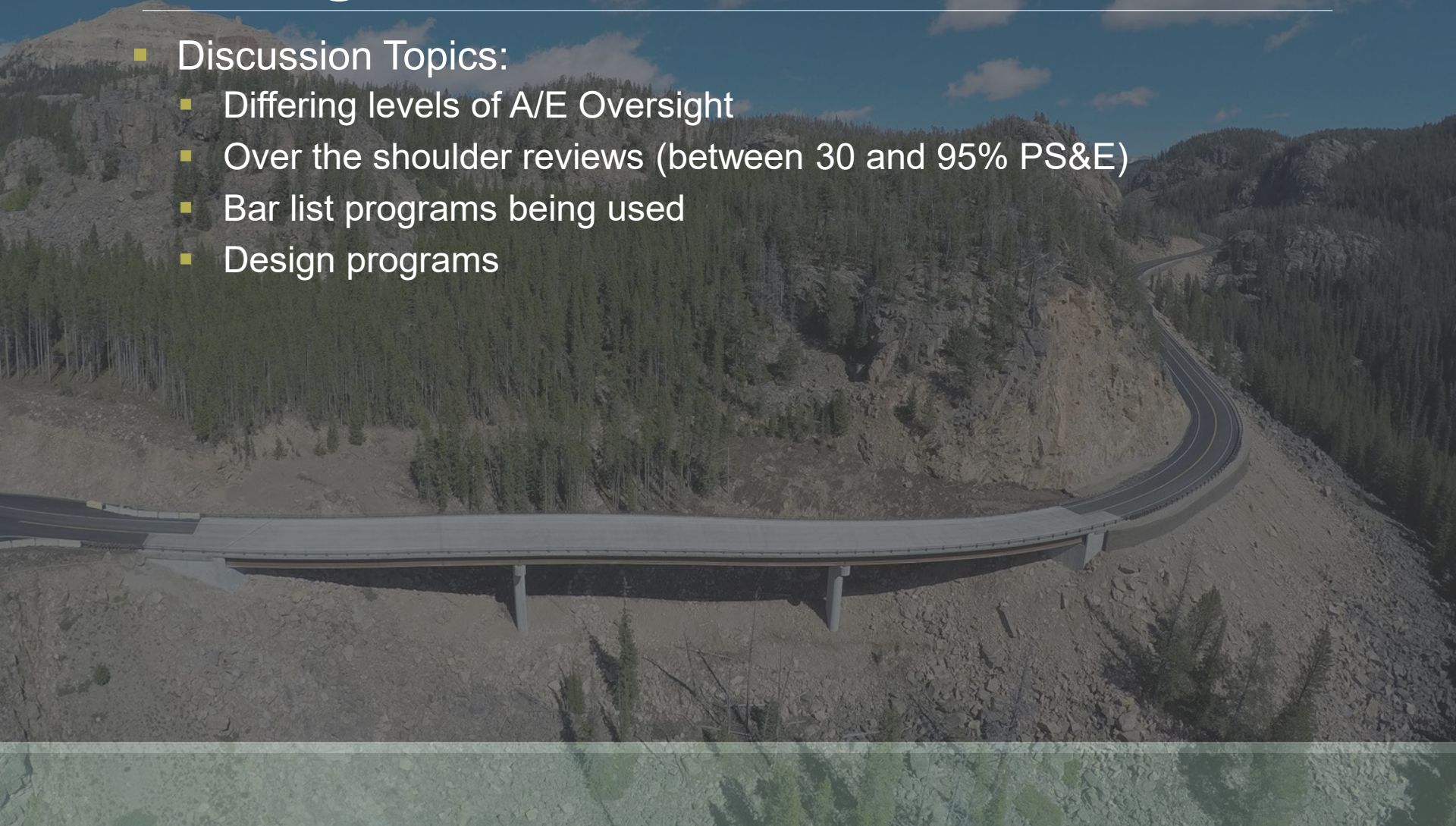
---

- Post-Design Services
  - Involvement of CFL Bridge A/E rep
  - Level of effort on construction submittal reviews, i.e. general conformance?
  - Coordination of disposition
  - Frequent issues

# Bridges and Structures

---

- Discussion Topics:
  - Differing levels of A/E Oversight
  - Over the shoulder reviews (between 30 and 95% PS&E)
  - Bar list programs being used
  - Design programs





# Bridges and Structures

---

- Discussion Topics:
  - Pedestrian bridge design
  - Buried structures discussion (roadway vs. structures vs. hydraulics responsibilities)
  - How do load rating calculations get to bridge owner?
  - Bridge Transition to ORD
  - New Bridge SCR's

# Questions?

---

- [Karl.Eikermann@dot.gov](mailto:Karl.Eikermann@dot.gov)
- 720-963-3390