

Call for Projects

May 13, 2013

EFL's approach to administering the Call for Projects Phase of the Access Program

As a result of the recent MAP-21 legislation which established the Federal Aid Access Program (Access Program) and with the receipt of initial program implementation guidance from Federal Lands Highway Headquarters staff (FHWA, HQ), and EFL's understanding of the MAP-21 legislation, the EFL staff has determined that a consistent approach to work processes and procedures be established at this time.

The internal FHWA-EFL staff resources will consist of, but not be limited to, EFLHD, HQ FLH, and the Federal Aid Division Office (DO) for each of the states within the EFLHD geographic area of responsibility. The external staff partners will come from the various Federal Land Management Agencies (FLMAs), State DOTs (SDOTs), local public agencies and/or local government agencies (LPAs and/or LGAs), and possibly the metropolitan planning organizations (MPOs) within each of our states. The FLMA partners in each state will consist of the five legislatively defined principal partner agencies, i.e., the US Forest Service (FS), the Bureau of Land Management (BLM), the US Army Corps of Engineers (USACOE), the National Park Service (NPS), and the US Fish and Wildlife Service (FWS) who own and maintain at least one federal land parcel in that state. The FLMA partners will also include, as appropriate, any other FLMA who owns and maintains a federal land parcel in that state where access to that parcel is provided via any travel mode deemed eligible for the receipt of funds under the Access Program requirements.

Once the Programming Decisions Committee (PDC) is formed and validated by the PDC member agencies, a "Call for Projects" will be advertised for each state administered by EFL. The advertisement will be posted on the EFL website with direct electronic notification to Federal Land Management Agencies.

Reflective of the initial Access Program implementation guidance issued by FLH HQ, the Call for Projects notification will follow a written process for screening and rating the proposed projects. EFL has developed this process that is contained in separate documents. A brief outline of the process follows:

1. EFL has established a public website for the Access Program located at: <http://www.efl.fhwa.dot.gov/programs/federal-lands-access.aspx>
2. The PDC will establish the Step 2 rating criteria and point allotments for the application for their respective state.
3. EFL will coordinate with each state DOT to determine the Call for Projects schedule and post this schedule on the EFL website, and send notice to the FLMAs.
4. EFL will conduct a coordination meeting for the benefit of the FLMAs, PDC members, and other concerned stakeholders prior to the Call for Projects.
5. EFL will announce the Call for Projects and provide the project proposal application on the EFL Access page website or in response to requests from partner agencies.
6. Only State, local or tribal entities may submit projects sponsored by the appropriate FLMAs to the PDC.
7. A minimum of 30 calendar days will be provided for submittal of applications to EFL.

8. State and local sponsors should consider projects that are supported or endorsed by the appropriate FLMA(s). If more than one priority project is identified by an FLMA, that Federal agency should delegate establishment of priorities to their headquarters, regional or state office as appropriate.
9. EFL will provide the initial screening of the proposed projects using the process contained in Step 1 of Appendix A of this document.
10. The PDC will convene a meeting led by EFL and determine the project rating scores as contained in Step 2 of Appendix A of this document.
11. If a member of the PDC has a possible conflict of interest or impartiality on any of the proposed projects, the member should recuse him or herself from the rating and selection process and provide an alternate member from their agency to temporarily replace them.
12. All official PDC decisions shall be unanimous.



Eastern Federal Lands Highway Division

Access Program

Project Screening and Rating Criteria for General Projects

Instructions: If the answer is yes to criteria below, then allocate points. Points are cumulative.

**First two "Base" criteria shall have points, otherwise project does not move forward to Step 2 (Rating Criteria).

STEP 1: INITIAL SCREENING (max 200 points)		Point allocation
Economic/Visitation Prioritization		
Do FLMA, StateDOT, and Facility Owner agree that the project is an economic/visitation generator?		45
Do FLMA, StateDOT, and Facility Owner agree that the project is a priority?		45
Is Project on current State Transportation Improvement Plan?		10
Base**		
Submitted by facility owner**		40
Project supported by FLMA**		40
20% Match		No points
Leveraging additional funding more than the required 20% match	20% match + (1-10)% of project cost	5
	20% match + (11-20)% of project cost	10
	20% match + (21)% of project cost	20
STEP 2: PROJECT RATING (max 100 points)		
General Projects		Point allocation
Safety (15 points)		
Improves identified hazardous conditions in Road Safety Audit (RSA)/Engineering Assessment		10
Improves safety for wide range of users		5
Accessibility and Mobility (20 points)		
Identified need on FLMA plan, State or County Comprehensive Plan		10
Fills missing link in network, removes travel restriction, bottleneck		10
Preservation (30 points)		
Improves National Bridge Inventory System (NBIS) deficient bridge rating		15
Improves surface condition		15
Economic Development (15 points)		
Increases/improves access to FLMA unit/area		5
Provides Economic Benefit to the Local Community		10
Environmental Quality and Sustainability (20 points)		

Enhances scenic and/or historic features	5
Reduces erosion, scour, and/or sedimentation	10
Provides bicycle or pedestrian opportunities	5
TOTAL MAXIMUM POINTS (cumulative) = 300	



Eastern Federal Lands Highway Division

Access Program

Project Screening and Rating Criteria for Studies and Assessments

Instructions: If the answer is yes to criteria below, then allocate points. Points are cumulative.

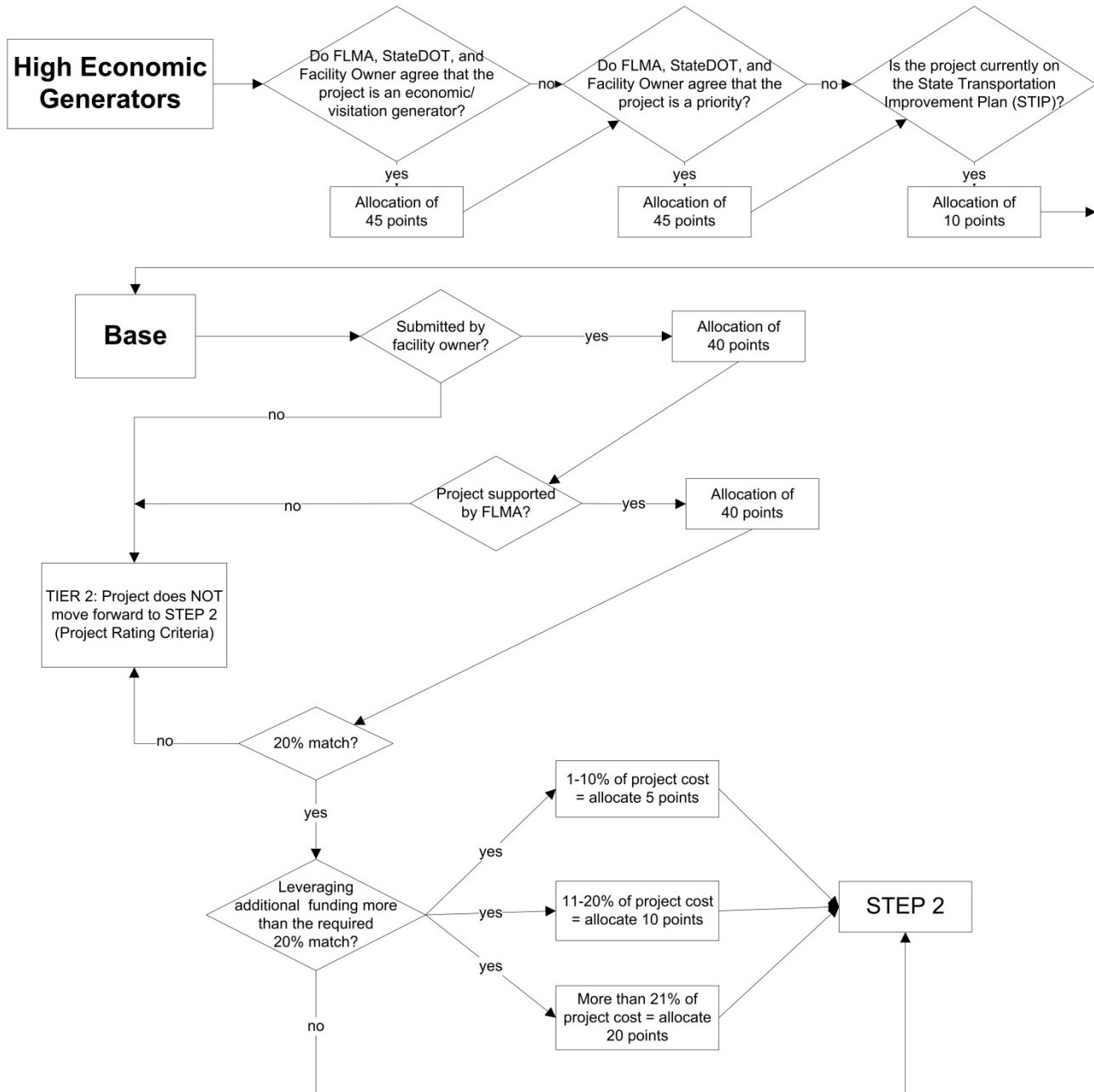
**First two "Base" criteria shall have points, otherwise project does not move forward to Step 2 (Rating Criteria).

STEP 1: INITIAL SCREENING (max 200 points)		Point allocation
Economic/Visitation Prioritization		
Do FLMA, State DOT, and Facility Owner agree that the project is an economic/visitation generator?		45
Do FLMA, State DOT, and Facility Owner agree that the project is a priority?		45
Is Project on current State Transportation Improvement Plan?		10
Base**		
Submitted by facility owner**		40
Project supported by FLMA**		40
20% Match		No points
Leveraging additional funding more than the required 20% match	20% match + (1-10)% of project cost	5
	20% match + (11-20)% of project cost	10
	20% match + (21)% of project cost	20
STEP 2: PROJECT RATING (max 100 points)		
Studies and Assessments		Point allocation
Safety (20 points)		
Will consider safety for all users		20
Accessibility and Mobility (30 points)		
Will consider issues related to all modes of traffic access		20
Addresses bicycle or pedestrian opportunities		10
Economic Development (30 points)		
Considers ways of attracting visitation		20
Addresses more than one FLMA		10
Environmental Quality and Sustainability (20 points)		
Addresses water quality, fish passage and wildlife connectivity		10
Addresses erosion, scour, and/or sedimentation issues		10
TOTAL MAXIMUM POINTS (cumulative) = 300		



EASTERN FEDERAL LANDS HIGHWAY DIVISION Access Program – Project Screening and Rating Criteria

STEP 1: INITIAL SCREENING (max 200 points)

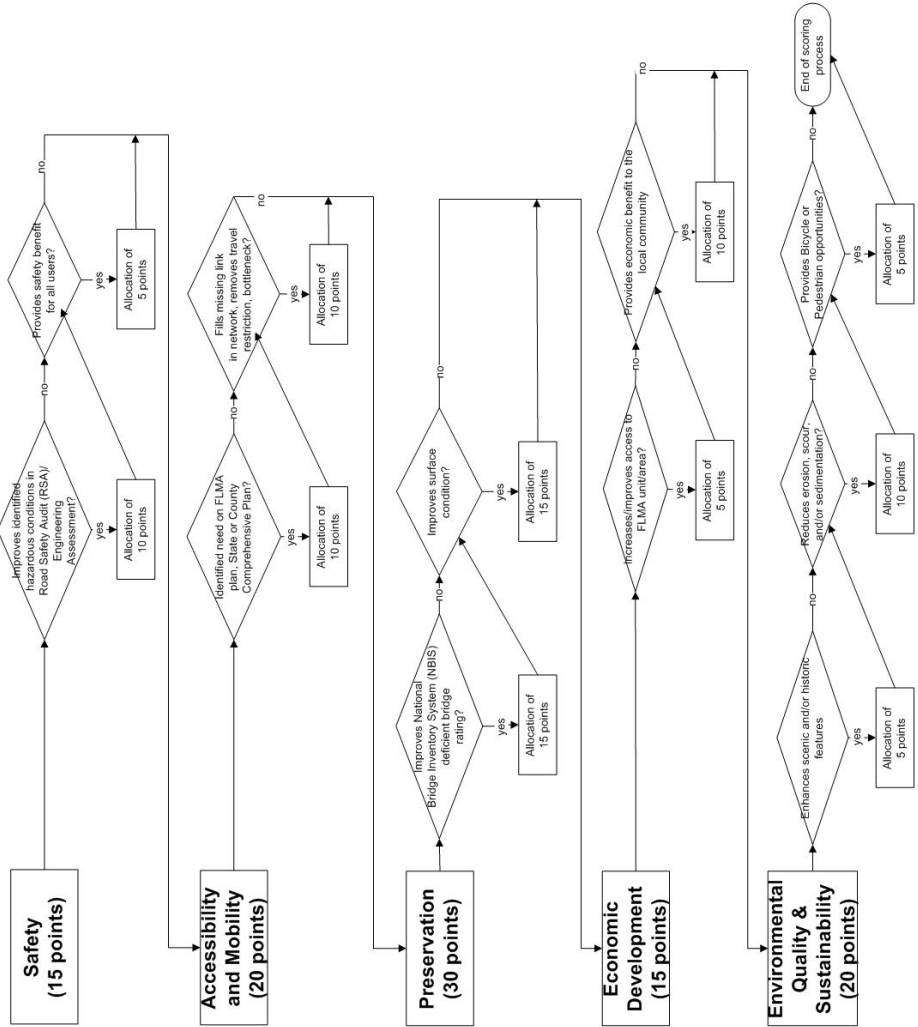




EASTERN FEDERAL LANDS HIGHWAY DIVISION - Access Program - Project Screening and Rating Criteria

STEP 2 : PROJECT RATING CRITERIA (max 100 points) - * To be determined by each Programming Decision Committee (PDC)

General Projects



Studies and Assessments

