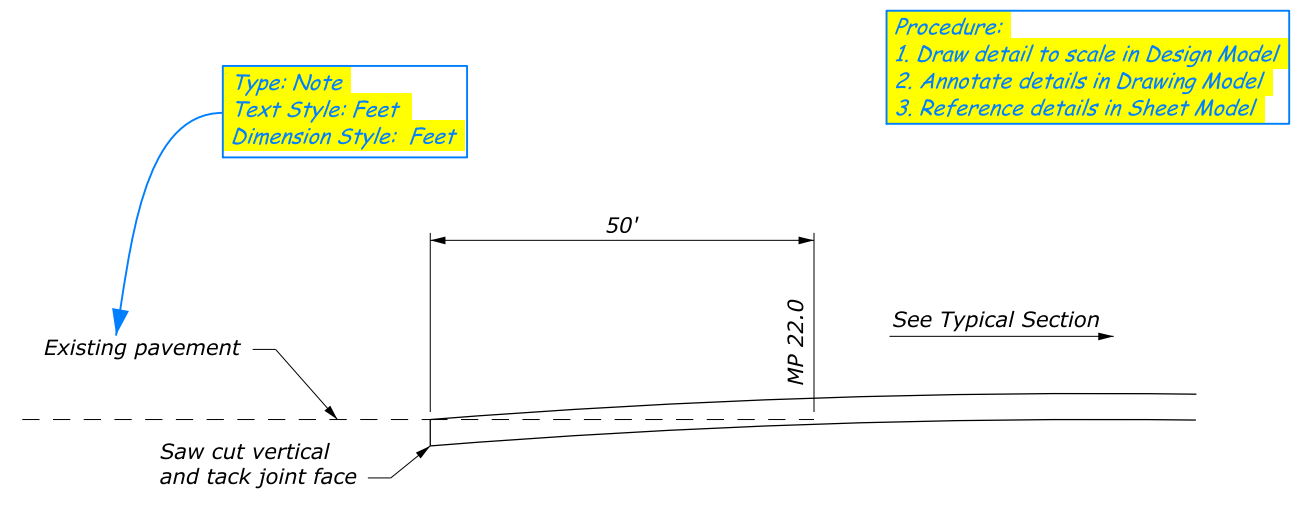
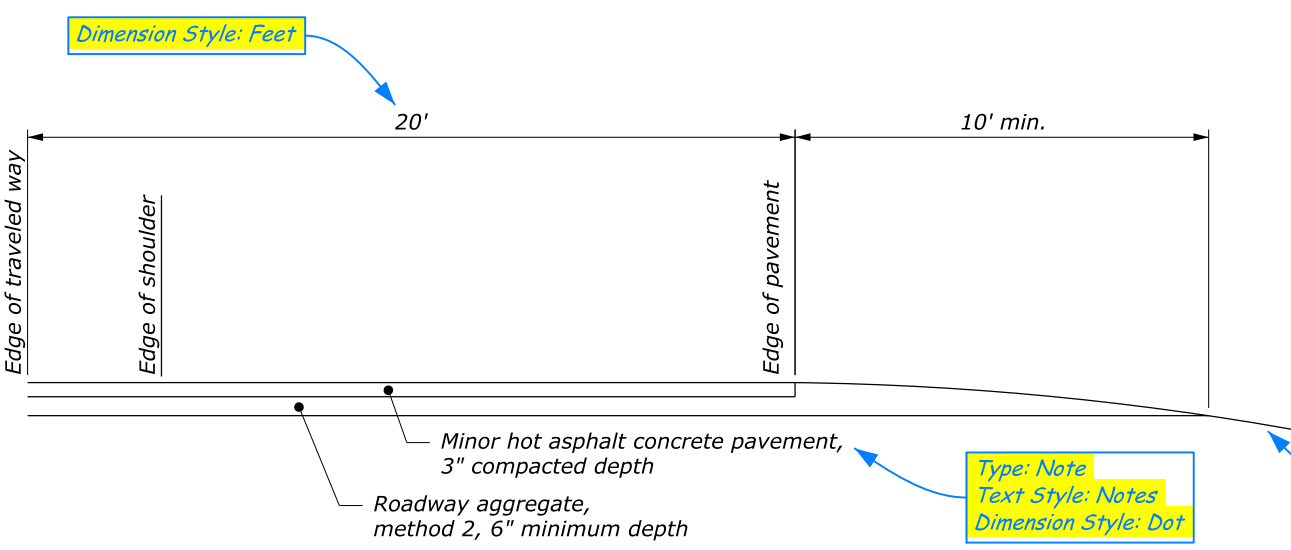


STATE	PROJECT	SHEET NUMBER
OR	PFH 46-1(4)	D.4



CONNECTION TO EXISTING ROADWAY



APPROACH SURFACING

MP 24.38

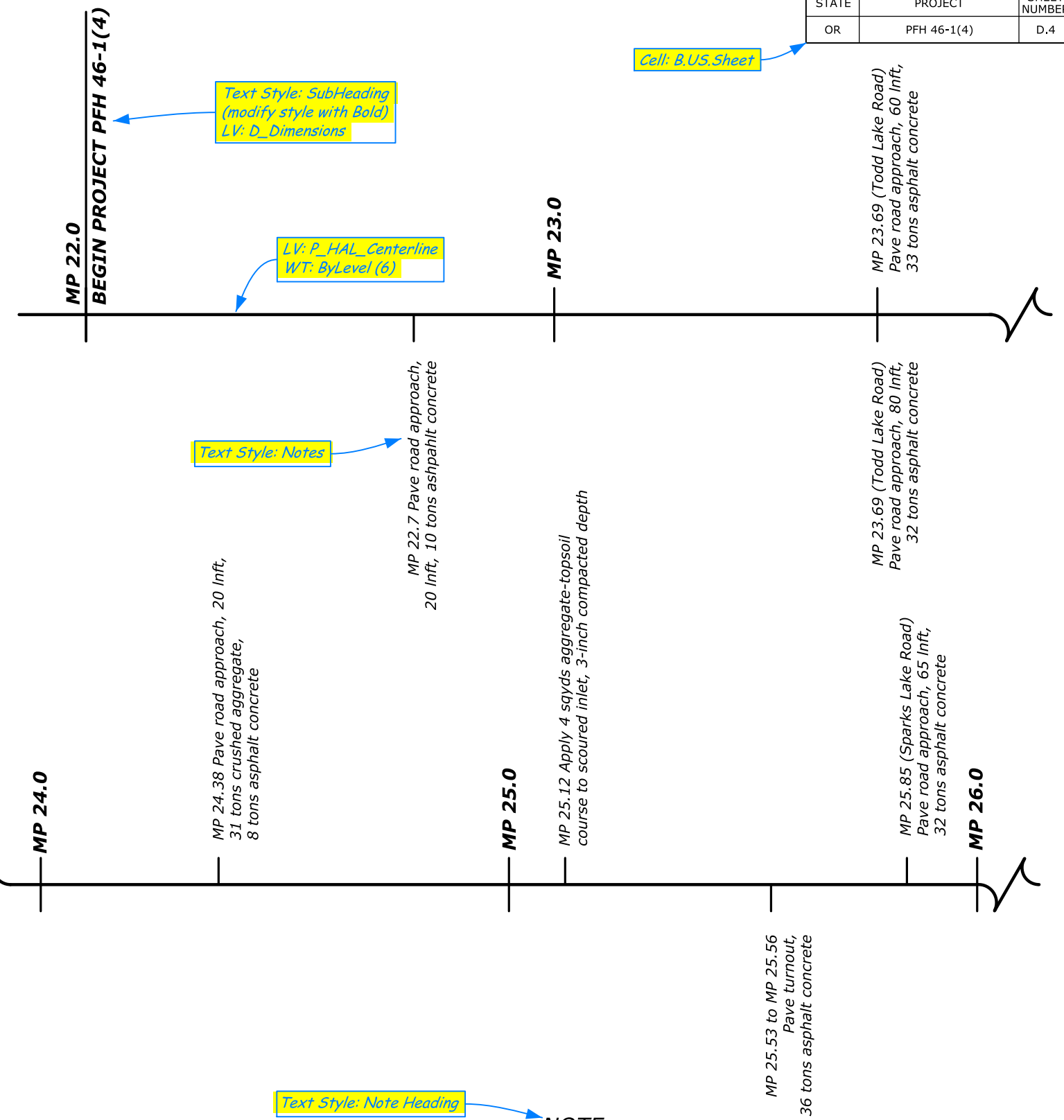
Procedure:
 1. Draw detail to scale in Design Model
 2. Annotate details in Drawing Model
 3. Reference details in Sheet Model

Type: Note
 Text Style: Feet
 Dimension Style: Feet

Detail is located in Saved View:
 RoadConnection

Type: Note
 Text Style: Notes
 Dimension Style: Dot

Detail is located in Saved View:
 ApproachSurfacing



MP 22.0
BEGIN PROJECT PFH 46-1(4)

Text Style: SubHeading
 (modify style with Bold)
 LV: D_Dimensions

LV: P_HAL_Centerline
 WT: ByLevel (6)

Text Style: Notes

MP 24.38 Pave road approach, 20 Inft,
 31 tons crushed aggregate,
 8 tons asphalt concrete

MP 22.7 Pave road approach,
 20 Inft, 10 tons asphalt concrete

MP 23.0

MP 25.12 Apply 4 sqyds aggregate-topsoil
 course to scoured inlet, 3-inch compacted depth

MP 25.53 to MP 25.56
 Pave turnout,
 36 tons asphalt concrete

MP 25.85 (Sparks Lake Road)
 Pave road approach, 65 Inft,
 32 tons asphalt concrete

MP 26.0

MP 23.69 (Todd Lake Road)
 Pave road approach, 60 Inft,
 33 tons asphalt concrete

Cell: B_US_Sheet

NOTE:

1. Pave existing approaches to match existing road width and radii.
2. Dispose of excavated material according to Subsection 203.05(a).

Text Style: Note Heading

Text Style: Notes

LV: D_Details
 WT: I

Label sheet title in Model Properties

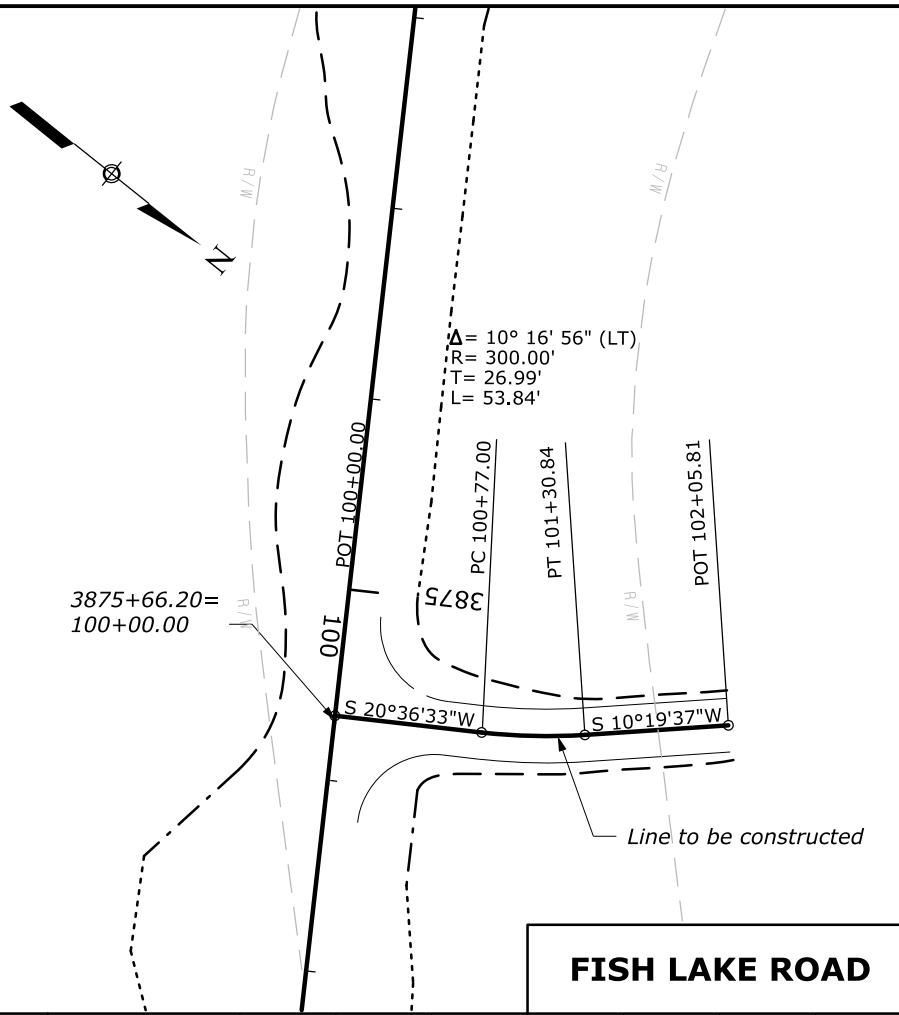
LINE GRAPH

Template: PlanDetails-Sur.dgn

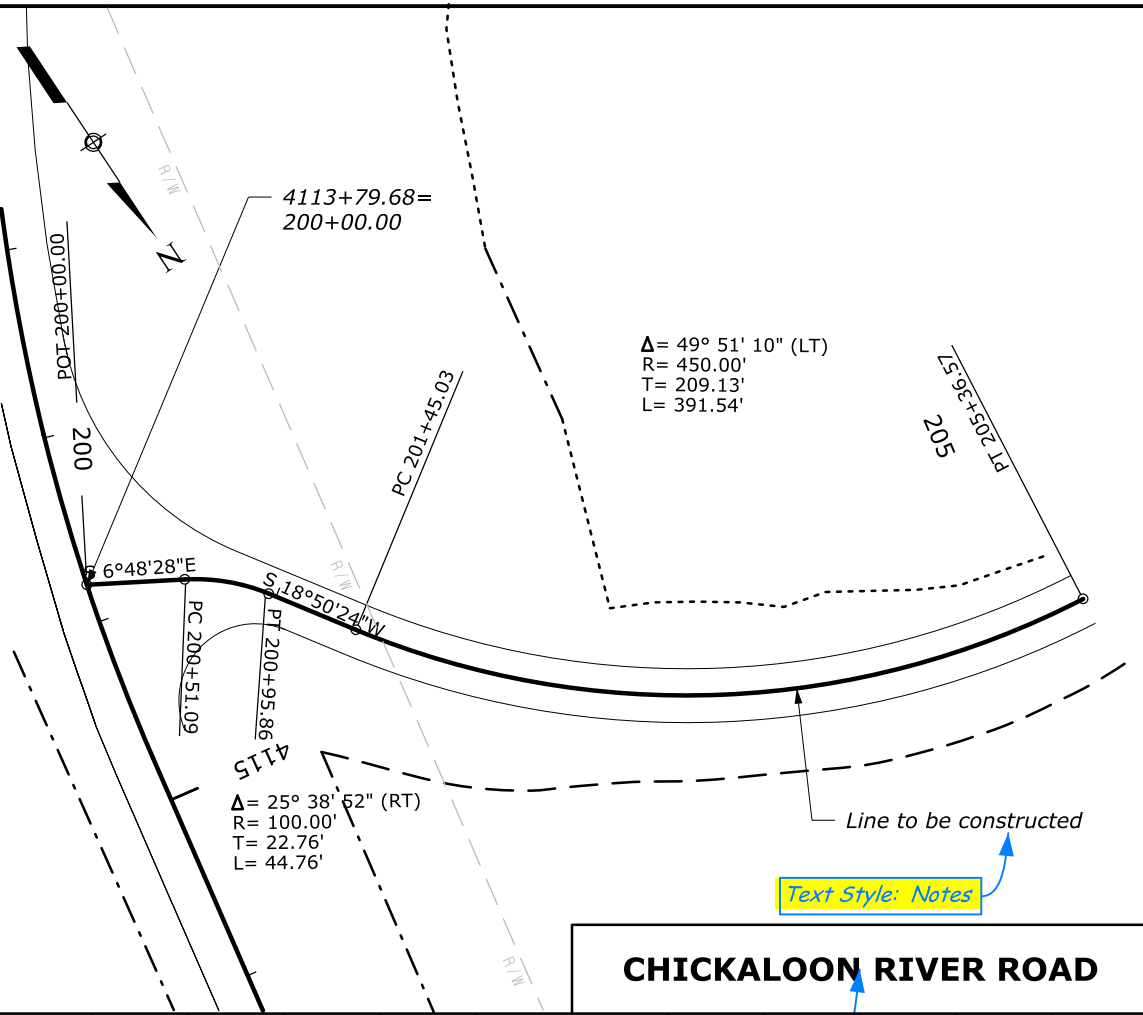
NO SCALE

08/2017
 D. Checker
 08/2017
 A. Designer
 08/2017
 Checked by:
 27 September 2017 12:40 PM
 c:\myfiles\pw_production\00267746\ak-13501\ga.dgn [Sheet]

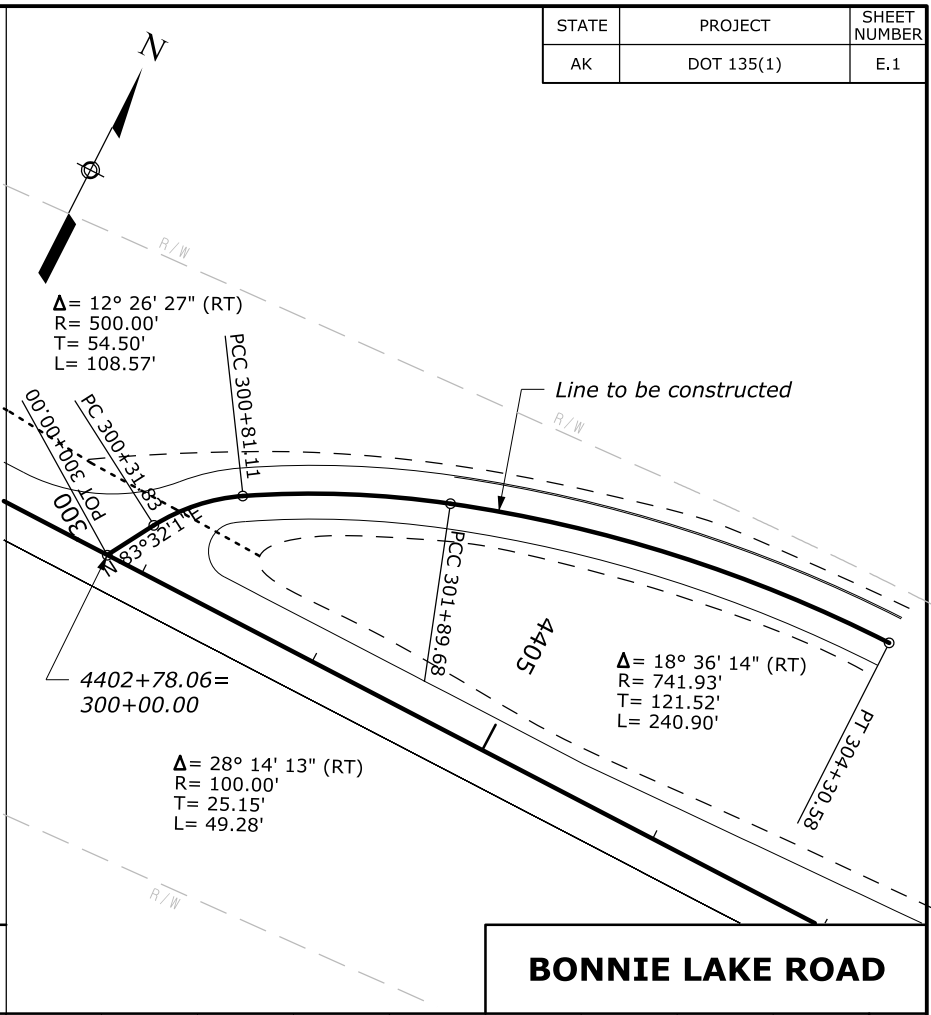
STATE	PROJECT	SHEET NUMBER
AK	DOT 135(1)	E.1



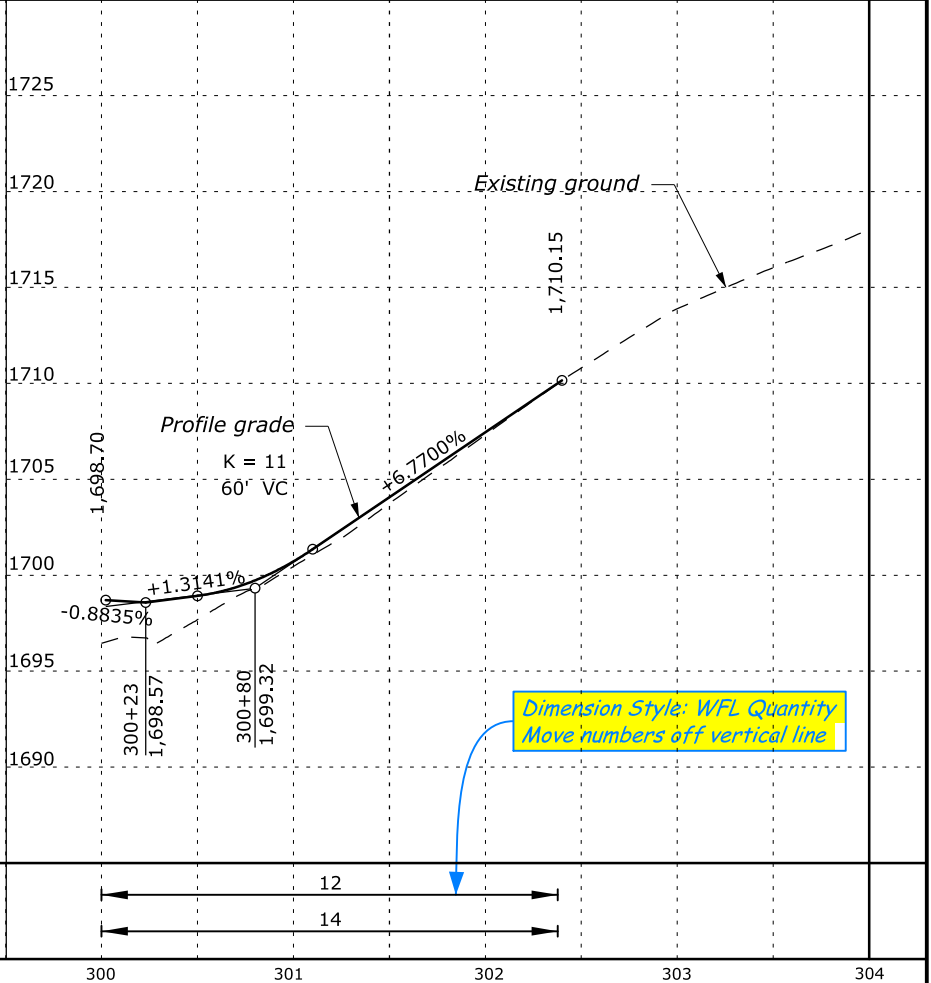
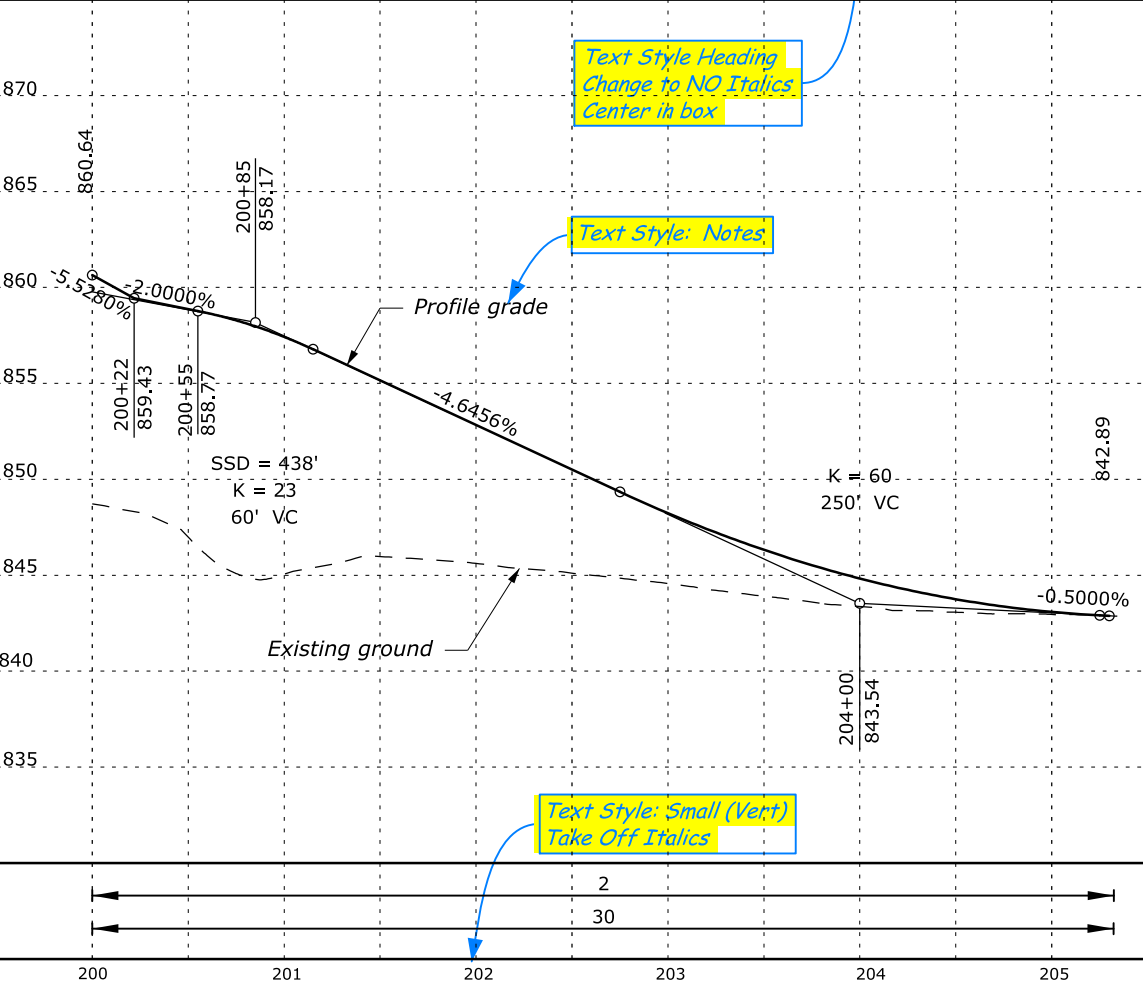
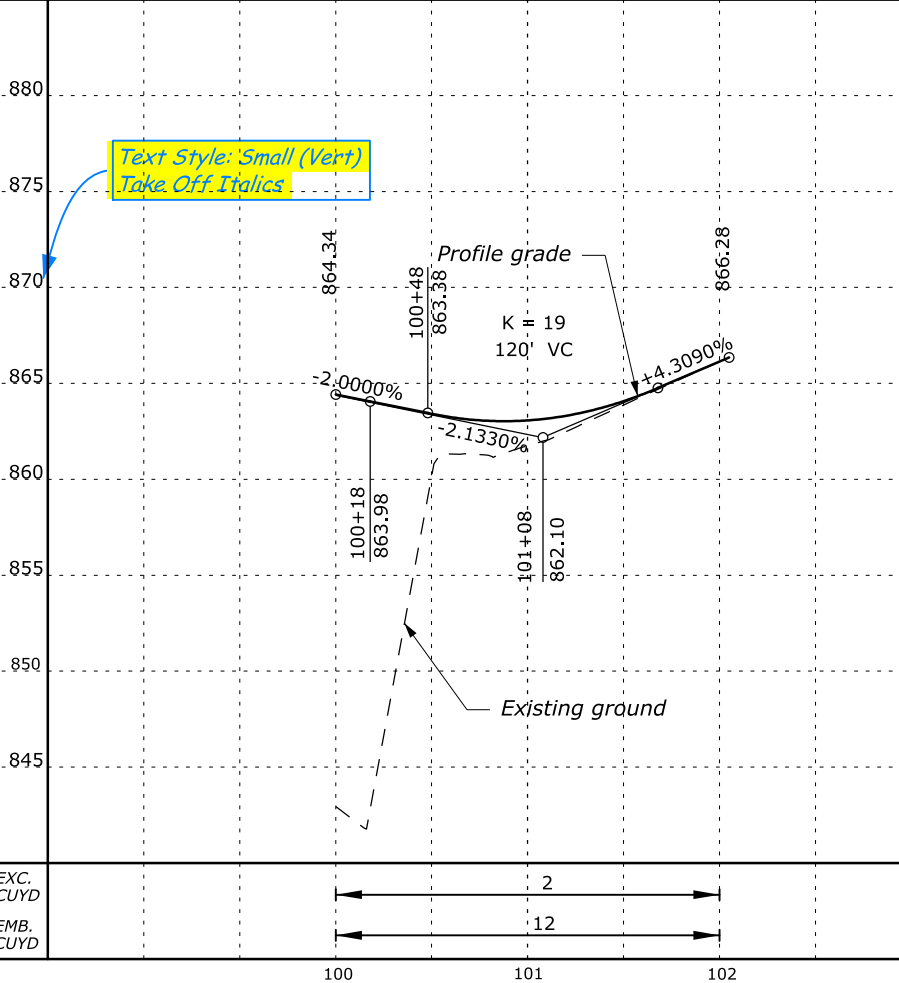
FISH LAKE ROAD



CHICKALOON RIVER ROAD



BONNIE LAKE ROAD



EXC. CUYD	2	2	12	12	14
EMB. CUYD	12	30			

*Text Style: Small (Vert)
 Take Off Italics*

*Text Style Heading
 Change to NO Italics
 Center in box*

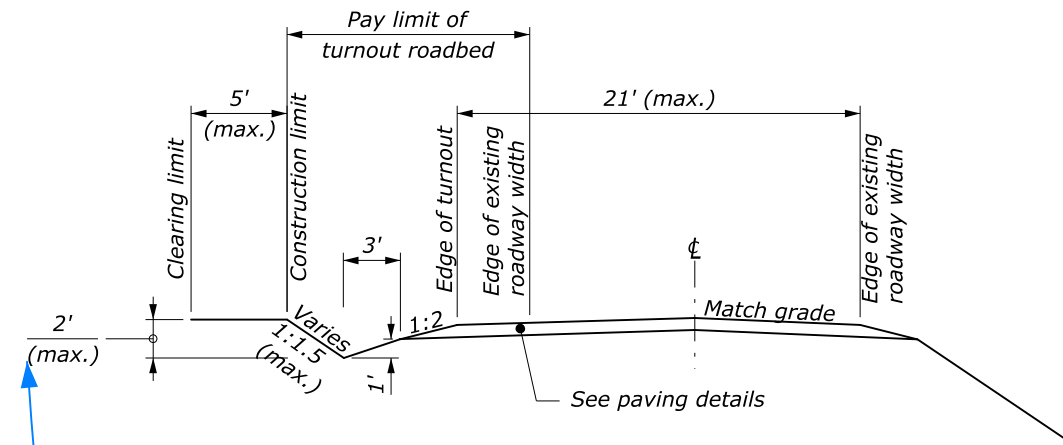
Text Style: Notes

*Text Style: Small (Vert)
 Take Off Italics*

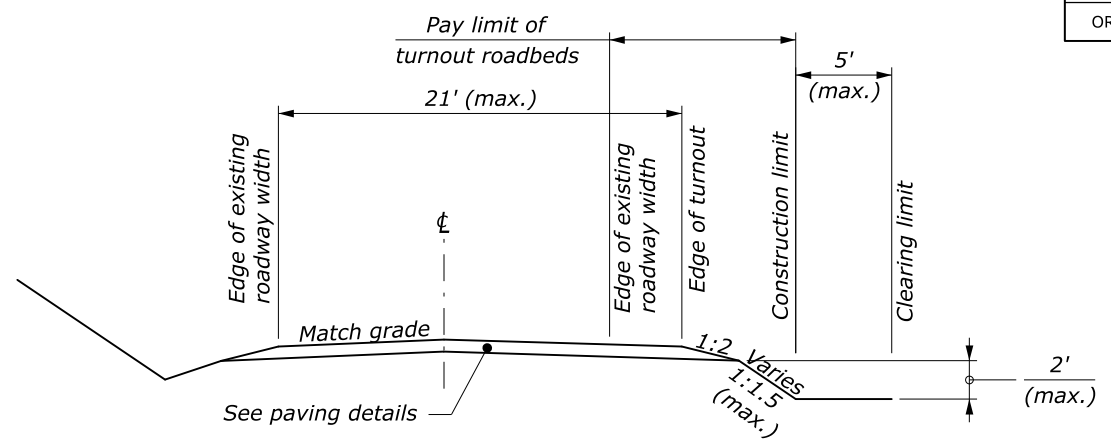
*Dimension Style: WFL Quantity
 Move numbers off vertical line*

Text Style: Notes

STATE	PROJECT	SHEET NUMBER
OR	BLM SAL 040727(1)	E.4

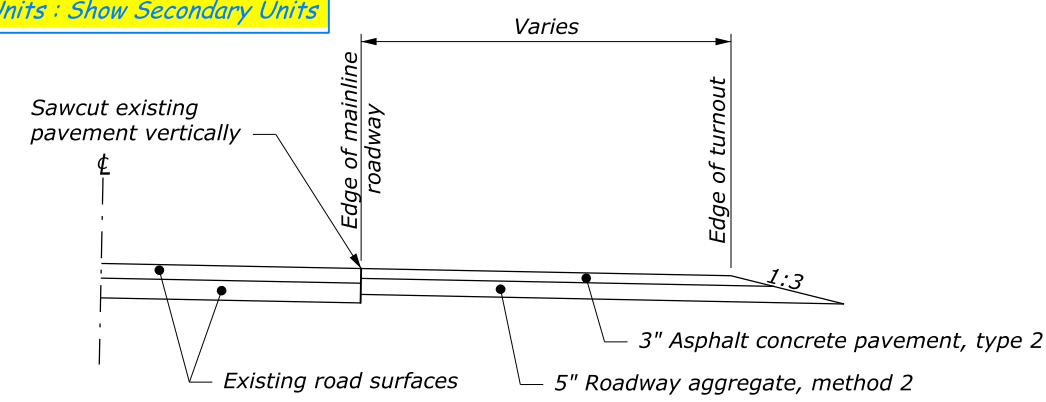


TYPICAL TURNOUT SECTION ON CUT SIDE

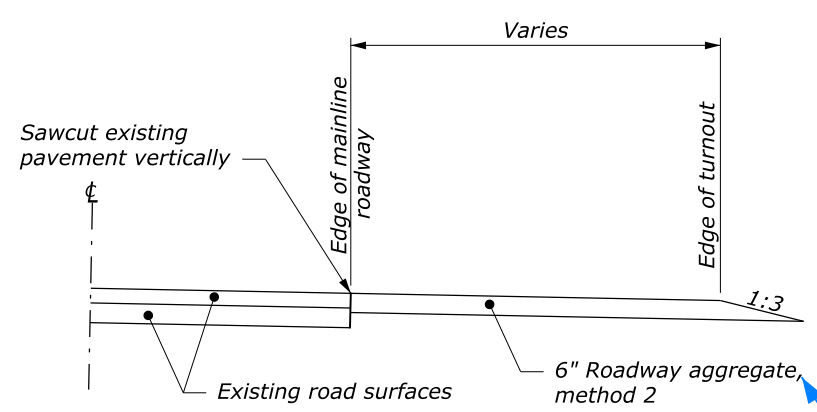


TYPICAL TURNOUT SECTION ON FILL SIDE

Dimension Style: Feet
Text Orientation: Horizontal
Units: Show Secondary Units



PERMANENT TURNOUT PAVING DETAIL

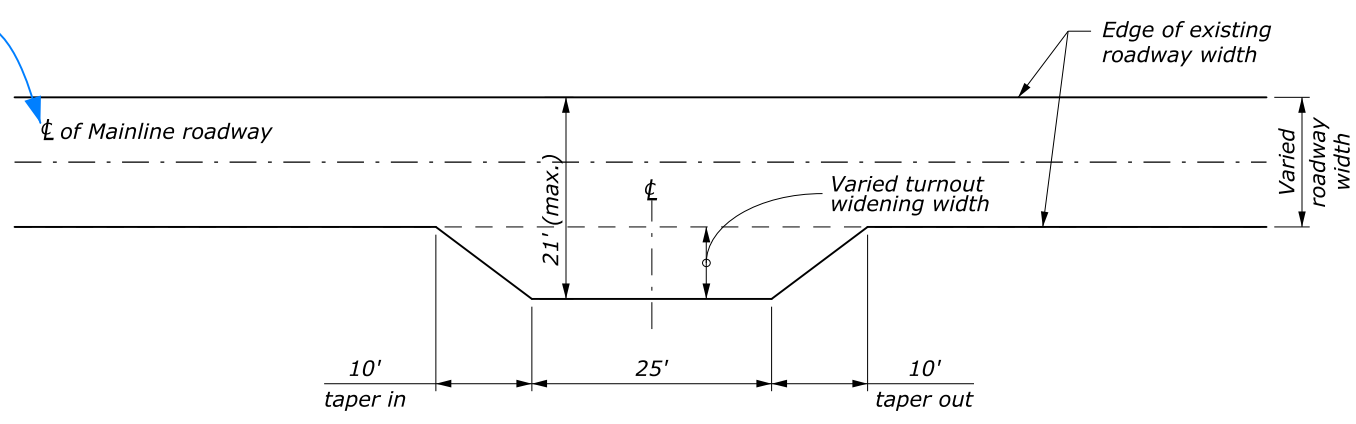


TEMPORARY TURNOUT PAVING DETAIL

Text Style: Notes

Text Style: Heading

Cell: Centerline
Scale: 1



BALD MOUNTAIN AND BIBLE CREEK ACCESS ROAD TYPICAL TEMPORARY AND PERMANENT TURNOUT PLAN

Text Style: Notes

NOTE:

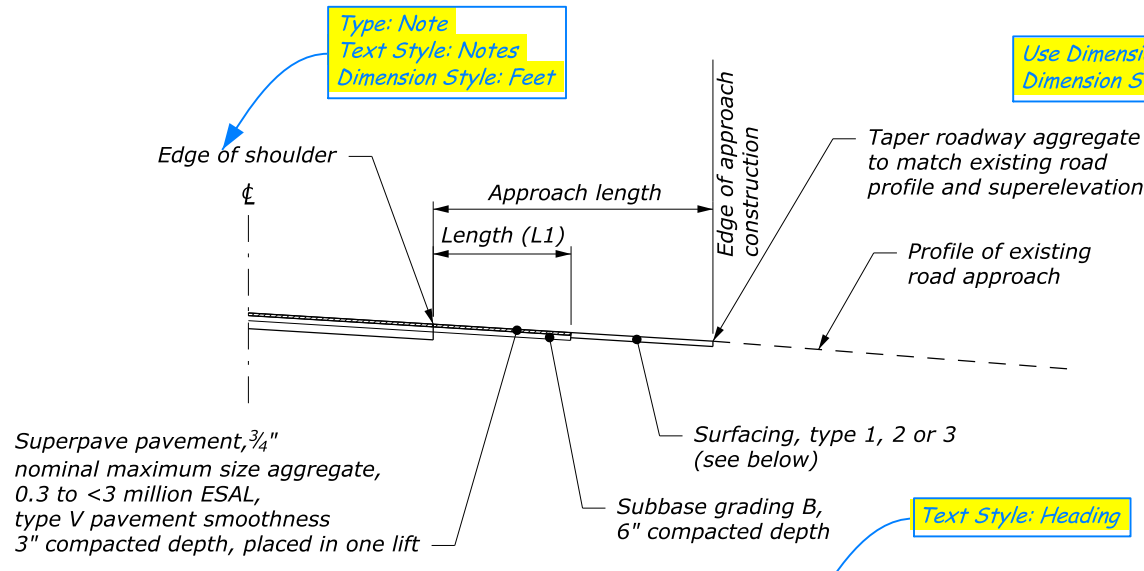
- Locations of permanent and temporary turnouts will be determined by the CO. Cut slopes and fill slopes of will not exceed 2 vertical feet.
- Stake out the turnouts, marking the widening widths, cut and fill depth for the CO approval. The CO will make adjustment and finalize the turnout dimensions.
- Do not start construction without written approval from CO.
- Construct side slope ratio and degree of finish of approaches compatible with adjacent roadway construction. Perform work under Section 646.

TURNOUT DETAILS

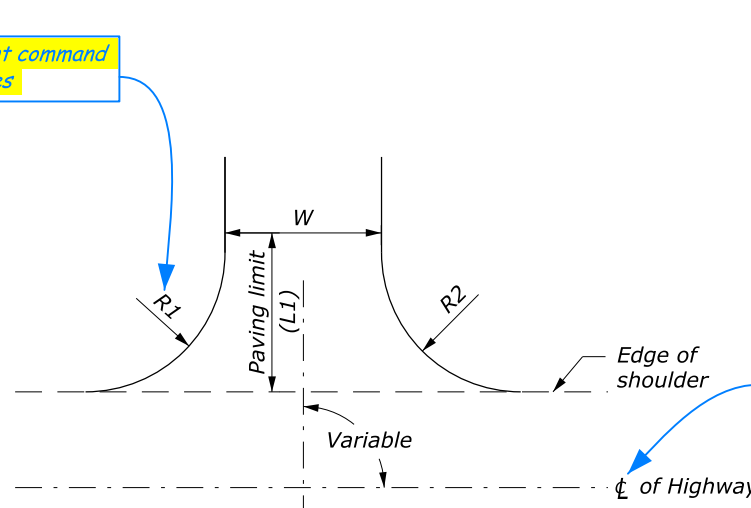
NO SCALE

11/2016 D. Checker
 11/2016 Checked by:
 11/2016 A. Designer
 Designed by:
 27 September 2017 12:53 PM
 c:\myfiles\pw_production\00267745\or-b-sal\4072701.ec.dgn [Sheet]

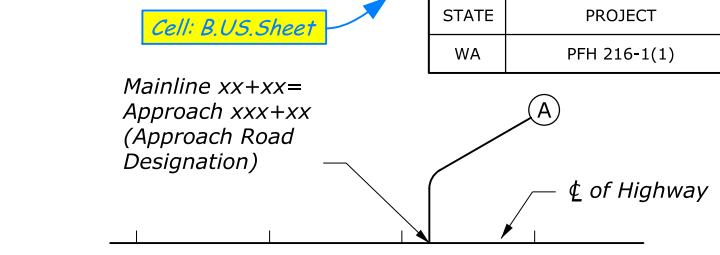
STATE	PROJECT	SHEET NUMBER
WA	PFH 216-1(1)	E.2



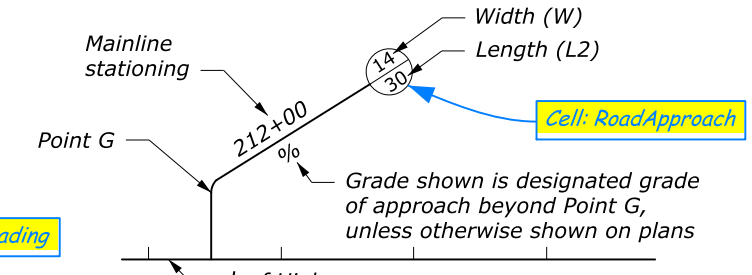
TYPICAL CONNECTION TO EXISTING ROAD APPROACH



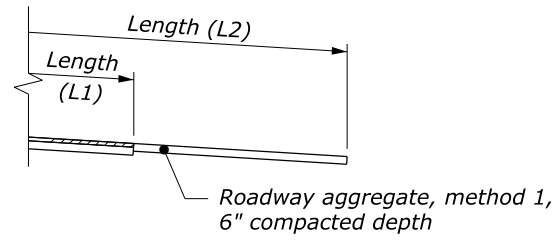
TYPICAL APPROACH ROAD PLAN



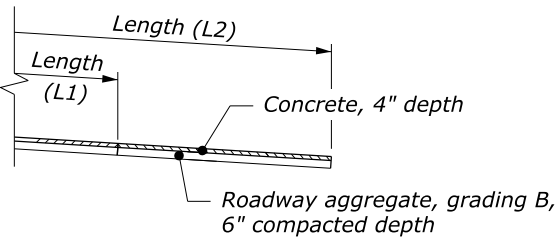
STANDARD APPROACH ROAD LOCATION SYMBOL (WITH APPROACH STATIONING)



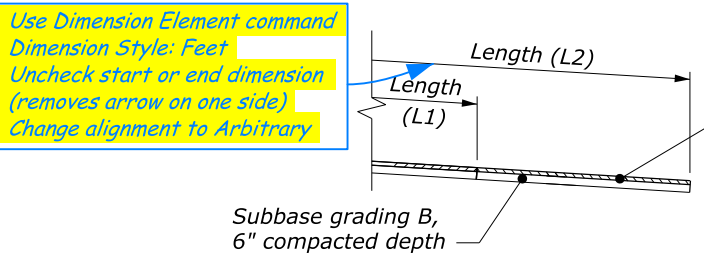
STANDARD APPROACH ROAD LOCATION SYMBOL (WITHOUT APPROACH STATIONING)



TYPE 1 SURFACING



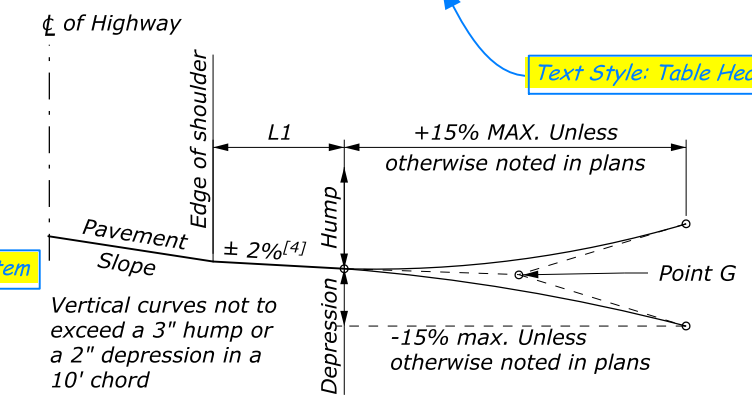
TYPE 2 SURFACING



TYPE 3 SURFACING

APPROACH ROAD DATA TABLE

MAINLINE STATION	W	R1	R2	L1	L2	SURFACING TYPE	COMMENTS
1001+80, RT	14	15	15	15	27.7	1	
1003+25, LT	14	15	15	15	40.8	1	
1003+75, RT	14	10	15	15	25.2	1	
1006+80, LT	14	10	15	15	24.1	1	
18+30, LT	14	25	25	15	100.0	1	State Park Entrance
22+34, RT	14	15	15	15	34.7	1	
27+30, RT	14	15	15	16	80.0	1	
30+70, LT	14	25	10	26	80.0	1	
31+50, LT	14	15	15	15	42.6	1	
31+50, RT	14	10	5	15	59.9	1	
32+25, LT	14	15	8	15	18.0	2	
32+50, LT	14	8	15	15	18.3	3	
32+50, RT	12	15	15	15	83.0	1	
35+90, RT	14	10	15	15	43.9	1	
36+05, RT	14	15	10	26	53.3	1	
36+50, LT	14	30	30	15	80.0	3	Forest Ridge Dr.
37+15, RT	14	10	30	11	35.4	1	
59+00, LT	14	15	15	11	60.0	1	Boy Scout Camp
62+40, LT	14	15	15	15	60.0	1	Boy Scout Camp
69+25, LT	28	15	15	15	31.3	1	
70+70, RT	14	30	30	5	100.0	1	Beehive Road
76+45, RT	14	15	10	5	28.0	1	
99+70, LT	20	15	15	5	16.4	1	
117+50, RT	12	15	15	5	15.8	1	
126+65, RT	18	15	15	5	26.0	1	
147+55, LT	12	15	15	5	21.7	1	Utility Access
148+60, RT	12	5	15	5	29.4	1	Utility Access
154+72, LT	12	15	15	5	16.0	1	Utility Access
154+72, RT	12	15	15	5	24.4	1	Utility Access



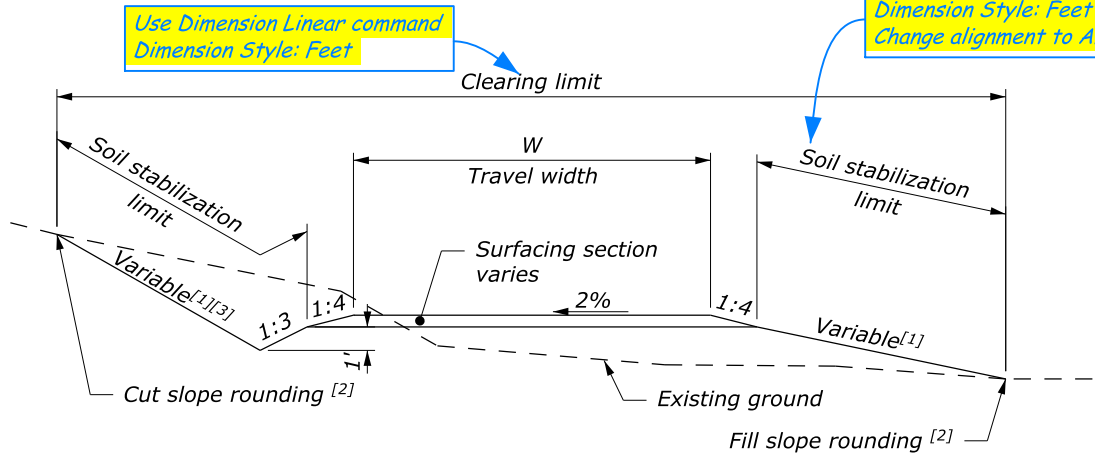
PROFILE OF TYPICAL APPROACH

NOTE:

1. Continue approach radius as required if connection to existing alignment of new approach is at an angle. Adjust radii to meet field conditions as approved by the CO.

FOOTNOTE:

- [1] Construct side-slopes of finished approaches to be compatible with adjacent roadway construction, unless otherwise shown on the plans. Construct slopes and ditches as shown in the Staking report data listing, (FAR clause 52.236-4) for approaches shown on Sheets E.3 to 6.
- [2] Round cut and fill slope as shown on Sheet C.2
- [3] See Std. 602-6, Pipe Culvert Inlet Treatment in Cut Slopes
- [4] See Sheets E.3 to 6 for variances

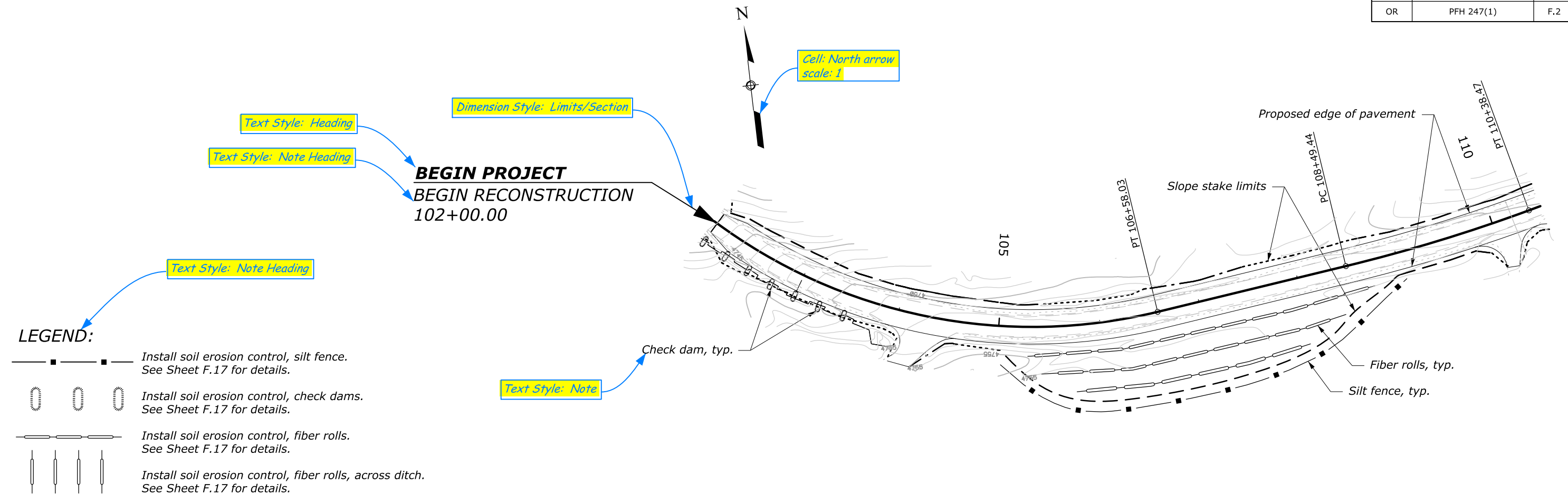


TYPICAL APPROACH ROAD SECTION

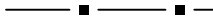

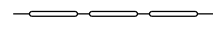
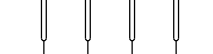
APPROACH ROAD DETAILS

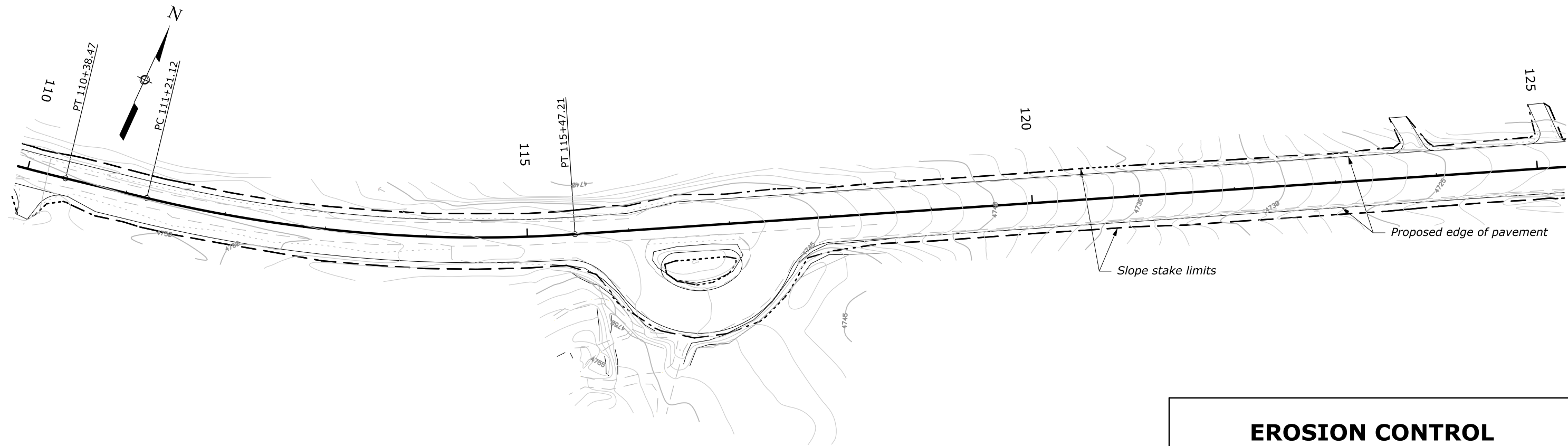
Template: PlanDetails-Sur.dgn

STATE	PROJECT	SHEET NUMBER
OR	PFH 247(1)	F.2



LEGEND:

- 
 Install soil erosion control, silt fence.
 See Sheet F.17 for details.
- 
 Install soil erosion control, check dams.
 See Sheet F.17 for details.
- 
 Install soil erosion control, fiber rolls.
 See Sheet F.17 for details.
- 
 Install soil erosion control, fiber rolls, across ditch.
 See Sheet F.17 for details.



**EROSION CONTROL
PLANS**

09/2017 D. Checker
 09/2017 Checked by: A. Designer
 Designed by: A. Designer
 c:\myfiles\pw_production\0267745\glac1022_gc.dgn [USC Sheet]
 5 September 2017 3:25 PM

STATE	PROJECT	SHEET NUMBER
MT	PRA GLAC 10(22)	I.3

NPS PMIS No. 54348
NPS Drwg. No. 101/109186

Reference into sheet from file in Plan Sheets

Level: D-Dimensions
Stxt Style: Notes

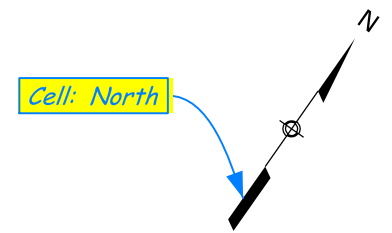
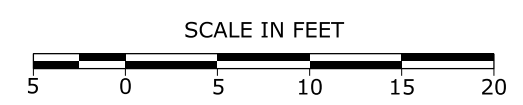
Level: D Dimensions
Text Style: Noes
Check box in DimStyle to show Secondary Units
Put () for (typ.), (min.) and (max.)

Cell: Riprap

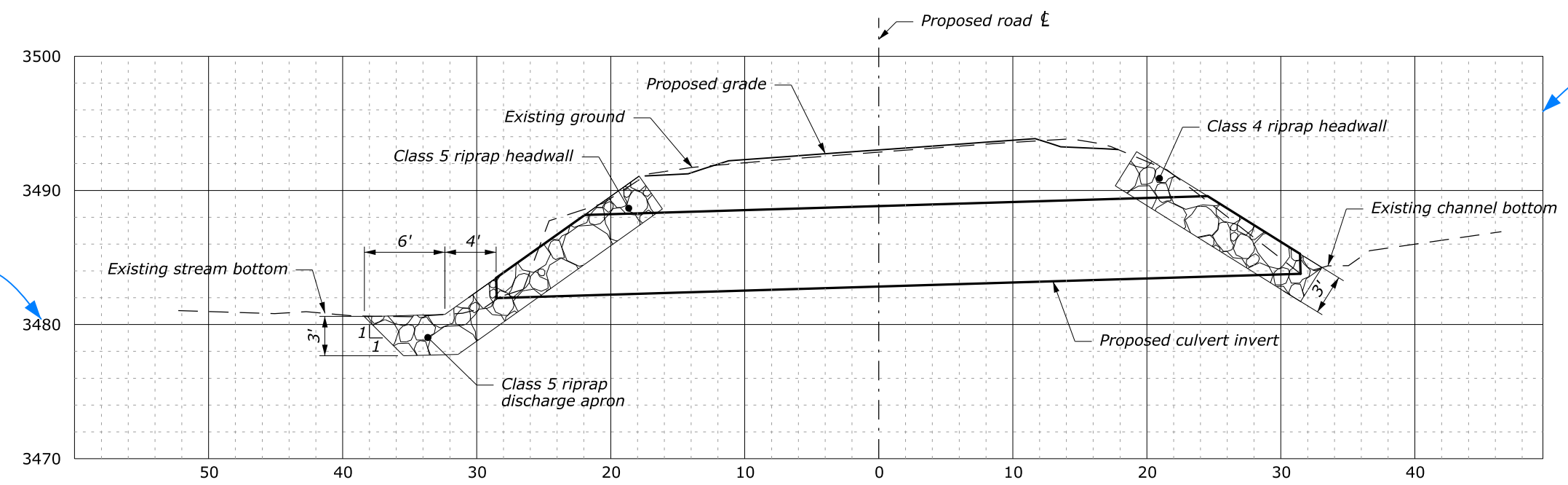
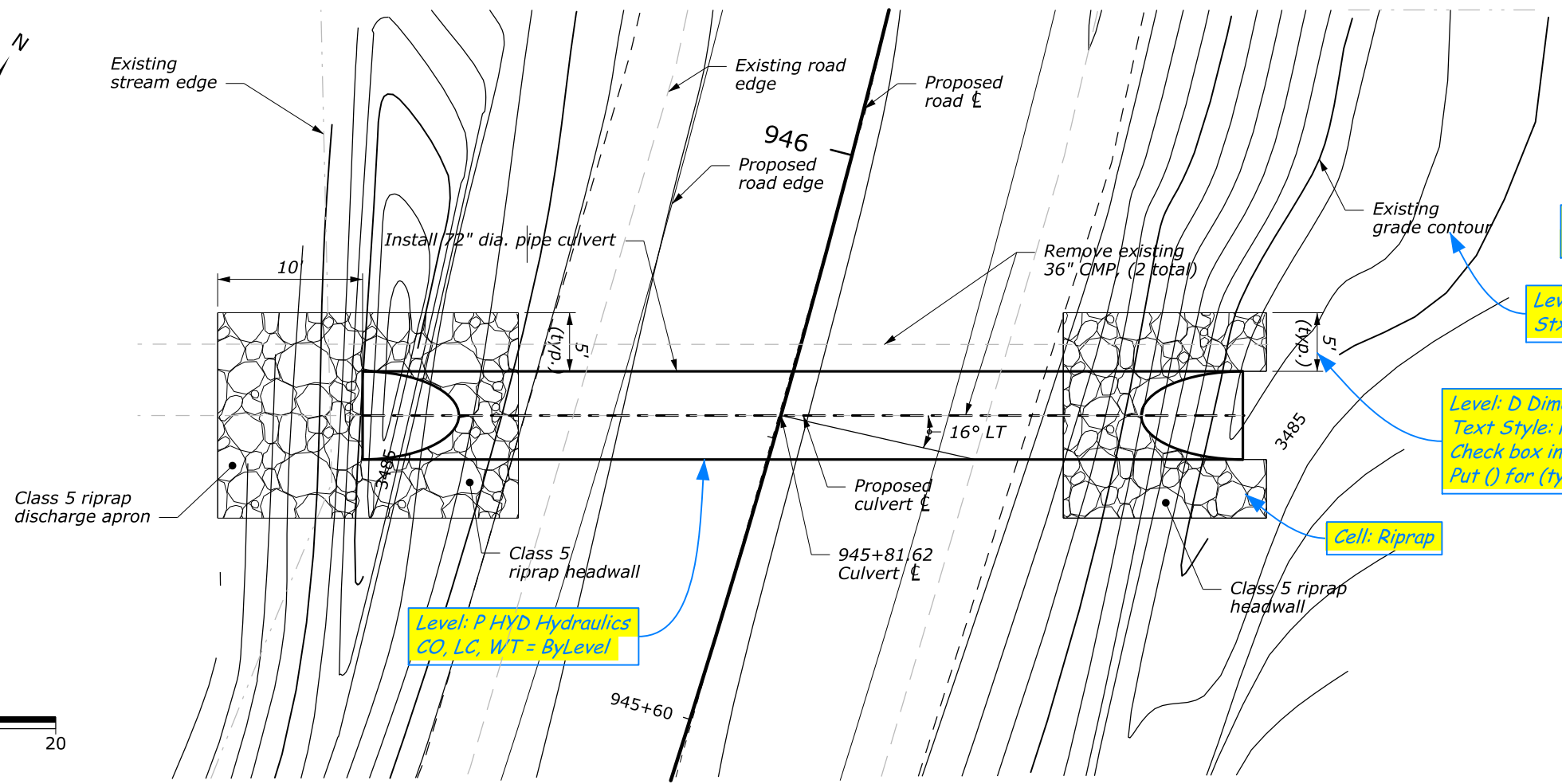
Level: P-HYD Hydraulics
CO, LC, WT = ByLevel

Text Style: Notes
Turn off Italics

Scaled to fit Profile



Mcdonald Creek



HYDRAULIC INFORMATION	
Q ₂ : 31 CFS	OHW : 1.5 FT
Q ₅₀ : 146 CFS	HW ₅₀ : 505 FT
FISH SPECIES:	
INSTREAM WORK WINDOW:	
ACTIVE CHANNEL WIDTH: 8 FT	

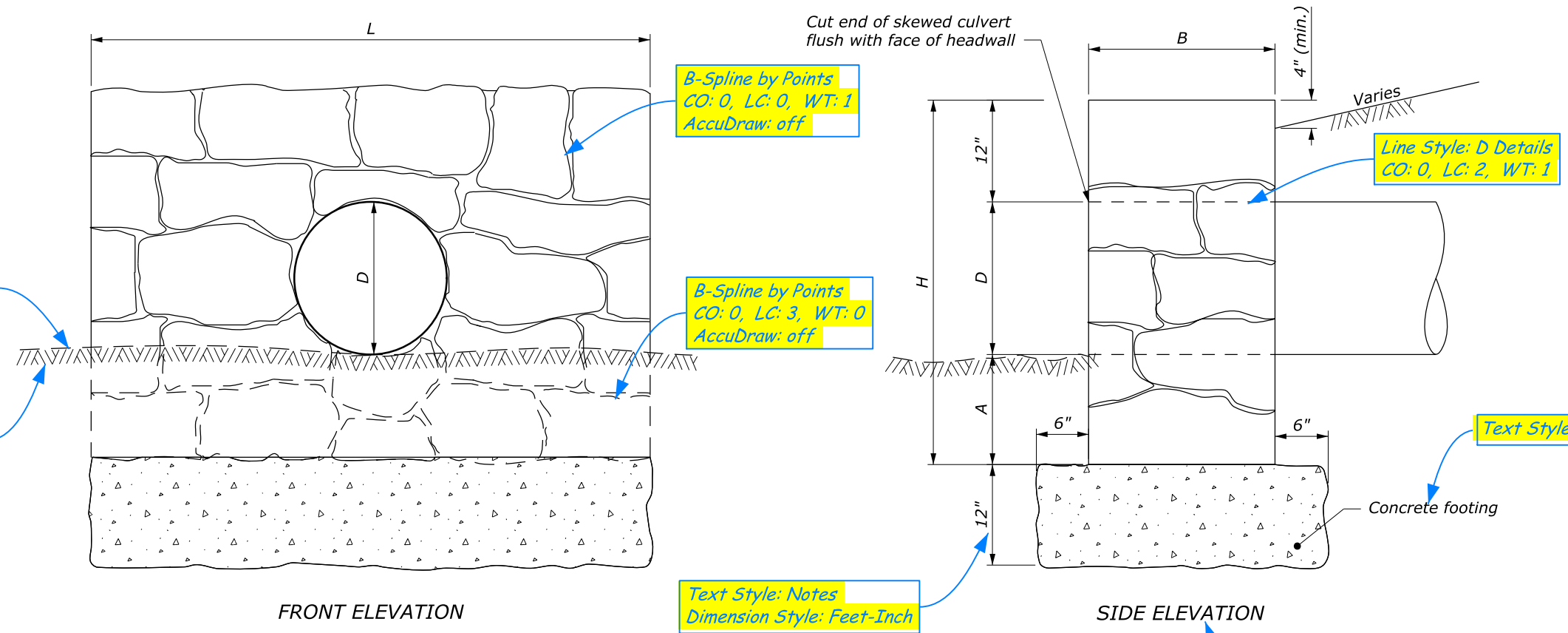
PIPE	
TYPE: CMP-AL-ST TYPE 2	SPAN: 72" RISE: 72"
LENGTH: 60 FT	WALL THICKNESS: 0.138 IN.
PIPE SLOPE: 0.03 FT/FT	FLOWLINE SLOPE:
INFILL TYPE:	SBM TYPE:

INLET	
INV N/E ELEV.: 928881/1652101/3483.8	
LOWER BEVEL HEIGHT: 18"	
BURIAL DEPTH: 0"	
BEVEL: PARTIAL 1.5(H):1(V)	
HEADWALL: RIPRAP	

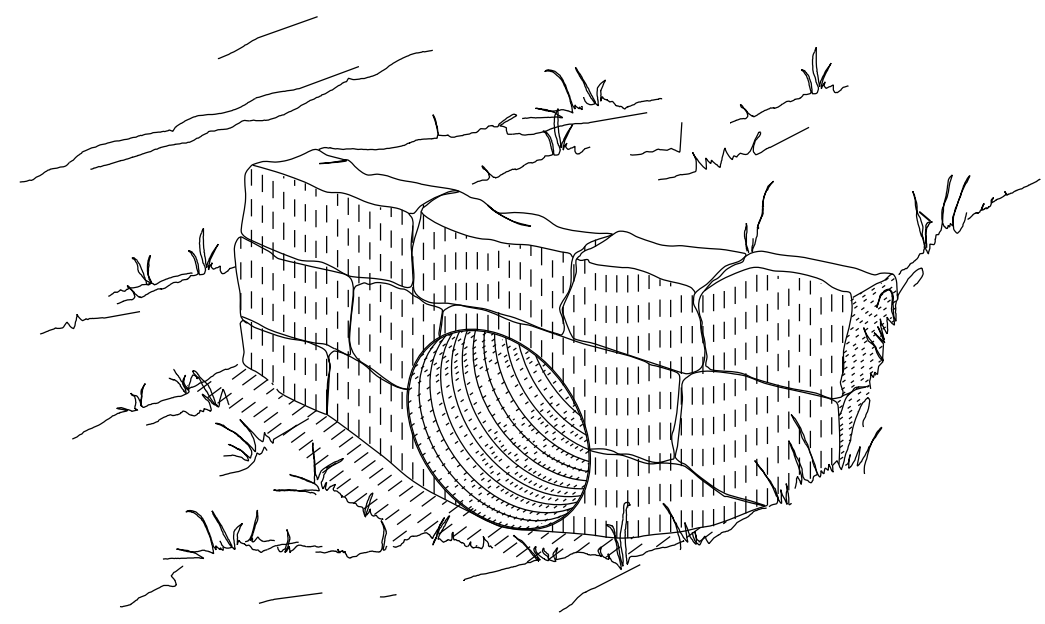
OUTLET	
INV N/E ELEV.: 928832/1652135/3482.0	
BURIAL DEPTH: 0"	
LOWER BEVEL HEIGHT: 18"	
BEVEL: PARTIAL 1.5(H):1(V)	
HEADWALL: RIPRAP	

945+82 CULVERT PLAN AND PROFILE

09/2017 D. Checker
 09/2017 Checked by: D. Checker
 09/2017 A. Designer
 20 September 2017 10:07 AM
 c:\myfiles\pw_production\00267745\glac1022es.dgn [USC Sheet]



ROUND PIPE



ROUND PIPE

D (IN)	A (IN)	B (IN)	H (IN)	SINGLE PIPE	
				L (IN)	STONE (CUYD)
12	12	14	36	44	0.37
15	12	16	40	52	0.61
18	12	18	42	60	0.72
24	16	22	52	76	1.41
30	20	26	62	94	2.52
36	24	30	72	108	4.35
48	24	36	84	144	7.93

- NOTE:**
1. Construct headwalls parallel to the line and grade of the roadway, unless shown otherwise on the plans.
 2. Modify headwall when pipes are skewed, as directed by the CO.
 3. For existing headwalls being reset, reset headwall to original dimensions, except at locations where new culvert is of a different diameter than original culvert.
 4. See Tabulation of Drainage Quantities for locations and estimated quantities of headwalls and footings.

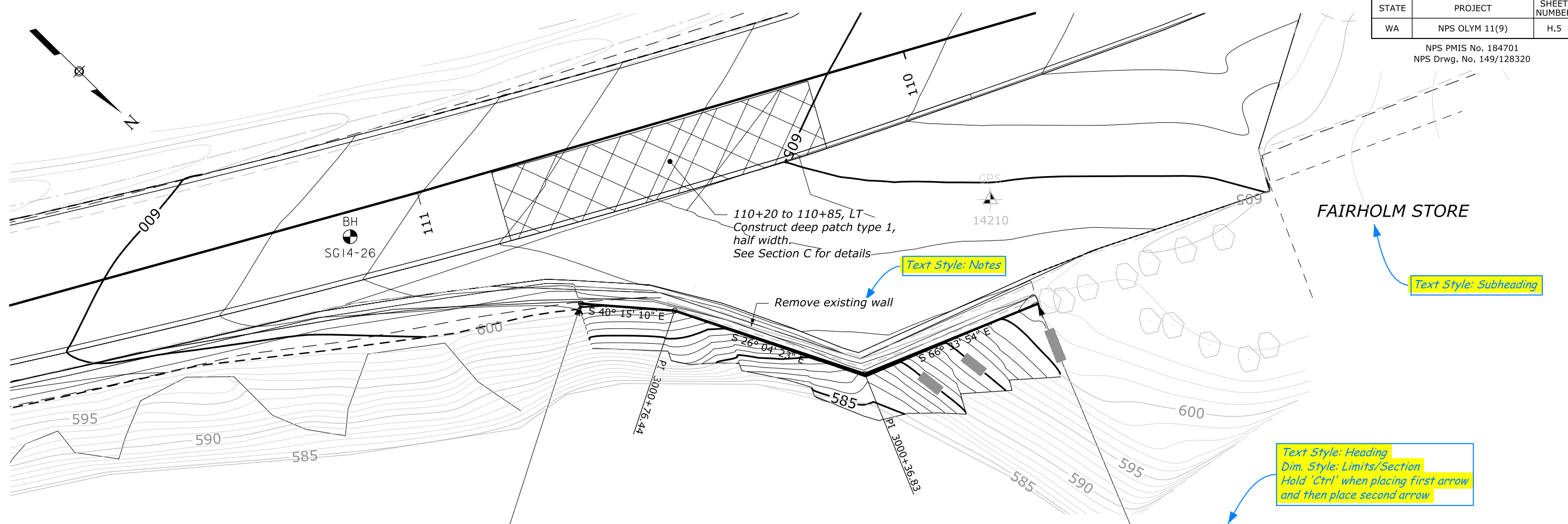
DRAINAGE DETAILS

NO SCALE

08/2017 D. Checker
 08/2017 Checked by:
 A. Designer
 Designed by:
 27 September 2017 2:14 PM
 c:\myfiles\pw_production\00267746\vol\m01109-wc.dgn [Sheet]

STATE	PROJECT	SHEET NUMBER
WA	NPS OLYM 11(9)	H.5

NPS PMIS No. 184701
NPS Drwg. No. 149/128320

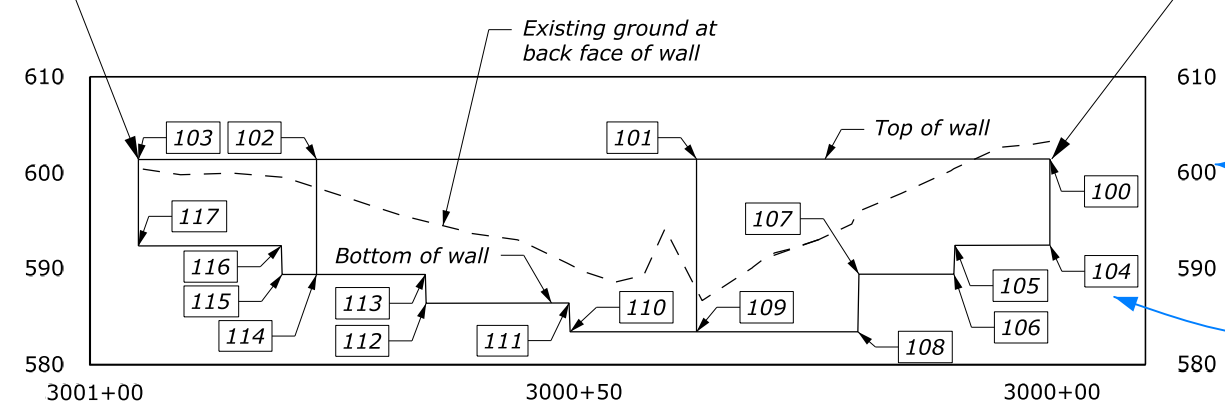


END MSE WALL

3000+95=
 109+25.19 (Main)
 29.68' RT
 N= 404525.025
 E= 886946.034
 El= 601.35

BEGIN MSE WALL

3000+00=
 110+10 (Main)
 55.61' RT
 N= 404,589.415
 E= 886,882.840
 El= 601.41



Create in Excel sheet and link into this sheet.

Vertical datum = Assumed

POINT	NORTHING	EASTING	ELEVATION	CHAIN WALLP_TOP110	
				STATION	OFFSET
100	404,589.415	886,882.840	601.41	3000+00	0.00
101	404,574.767	886,916.631	601.39	3000+36.83	0.00
102	404,539.189	886,934.040	601.36	3000+76.44	0.00
103	404,525.025	886,946.034	601.35	3000+95	0.00
104	404,589.744	886,882.982	592.41	3000+00	-0.36
105	404,585.767	886,892.157	592.41	3000+10	-0.36
106	404,585.873	886,892.204	589.41	3000+10	-0.48
107	404,581.899	886,901.380	589.40	3000+20	-0.48
108	404,582.119	886,901.475	583.40	3000+20	-0.72

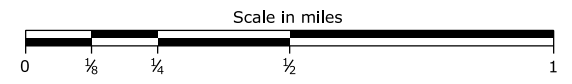
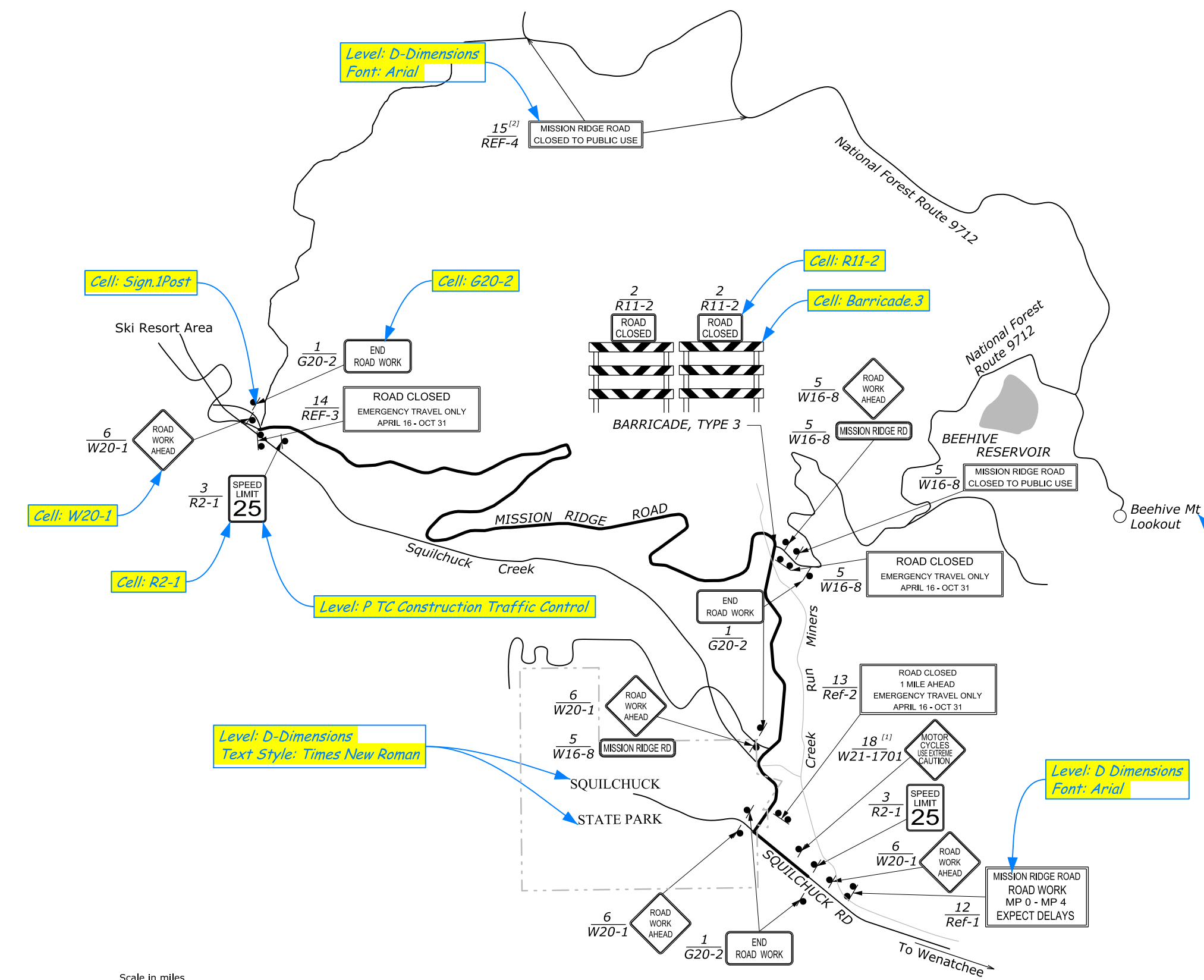
POINT	NORTHING	EASTING	ELEVATION	CHAIN WALLP_TOP110	
				STATION	OFFSET
109	404,575.426	886,916.917	583.39	3000+36.83	-0.72
110	404,563.196	886,922.950	583.38	3000+50	-0.59
111	404,563.155	886,922.865	586.38	3000+50	-0.50
112	404,549.680	404,549.680	586.37	3000+65	-0.49
113	404,549.637	886,929.368	589.37	3000+65	-0.40
114	404,539.604	886,934.278	589.36	3000+76.17	-0.40
115	404,536.729	886,936.647	589.36	3000+80	-0.40
116	404,536.689	886,936.599	592.36	3000+80	-0.34
117	404,525.242	886,946.292	592.35	3000+95	-0.34

Text Style: Notes
Dimension Styles: under Notes/
Text Frame: turn on Box

MSE WALL
109+90 to 110+75

STATE	PROJECT	SHEET NUMBER
WA	PFH 216-1(1)	N.2

09/2017
 D. Checker
 A. Designer
 09/2017
 27 September 2017 1:37 PM
 c:\myfiles\pw_production\0267746\w21601_nb.dgn [Surf Sheet]



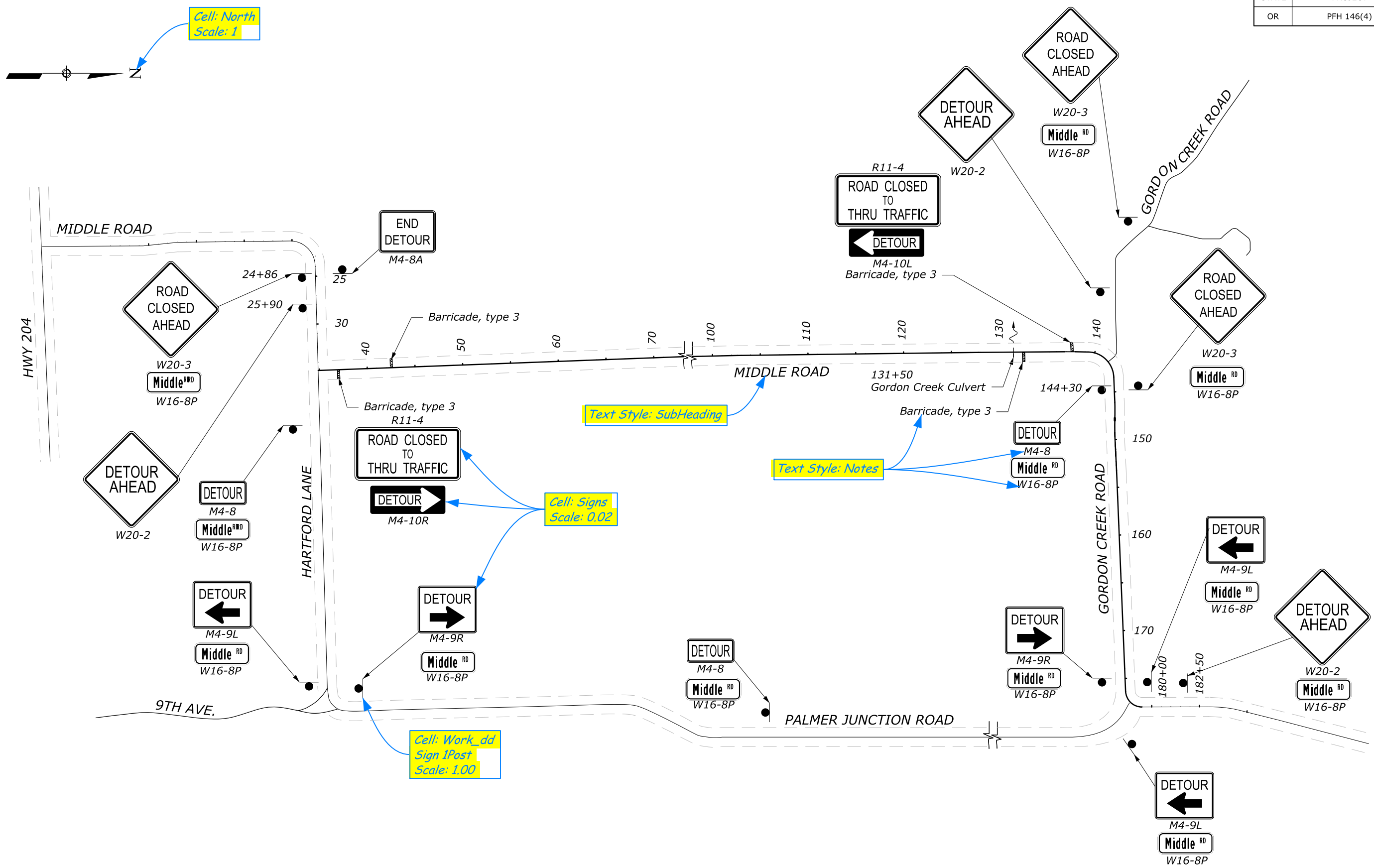
- NOTE:**
- Cover signs Ref-2, Ref-3 and Ref-4 when not in use.
 - Construction sign colors:
Background: Orange, reflectorized
Legend: Black, non-reflectorized
 - The location of the signs will be approved by the CO.
 - See Sheets K.3-5 for additional temporary traffic control signing.

- FOOTNOTE:**
- See Washington DOT Sign Fabrication Manual.
 - Place Ref-4 at Beehive Road trail heads (Forest Trail 1200 - two locations).

**TEMPORARY
TRAFFIC CONTROL
SIGNING**

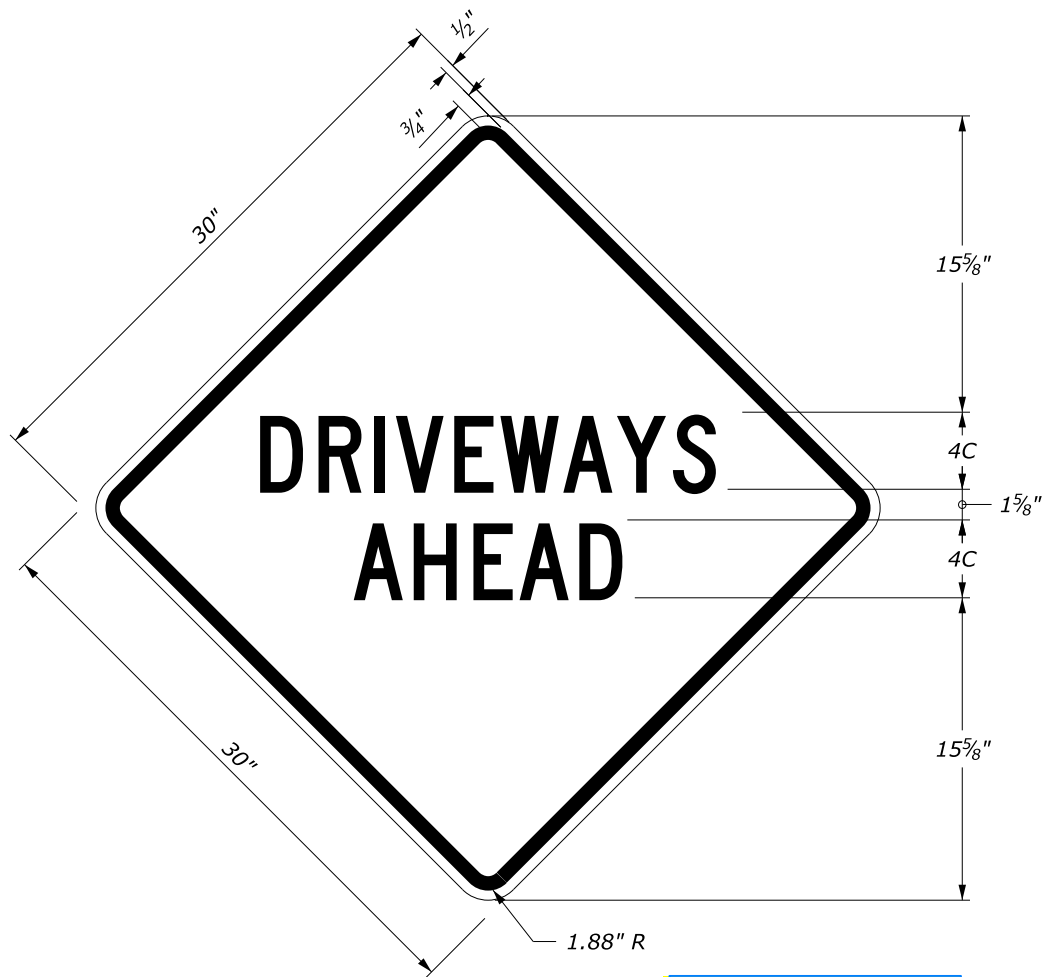
STATE	PROJECT	SHEET NUMBER
OR	PFH 146(4)	G.2

08/2017
 D. Checker
 08/2017
 A. Designer
 08/2017
 Checked by:
 31-August 2017 2:30 PM
 c:\myfiles\pw_production\00267745\of14604_nb.dgn [USC Sheet]



DETOUR PLAN

STATE	PROJECT	SHEET NUMBER
OR	PFH 247(1)	1.25



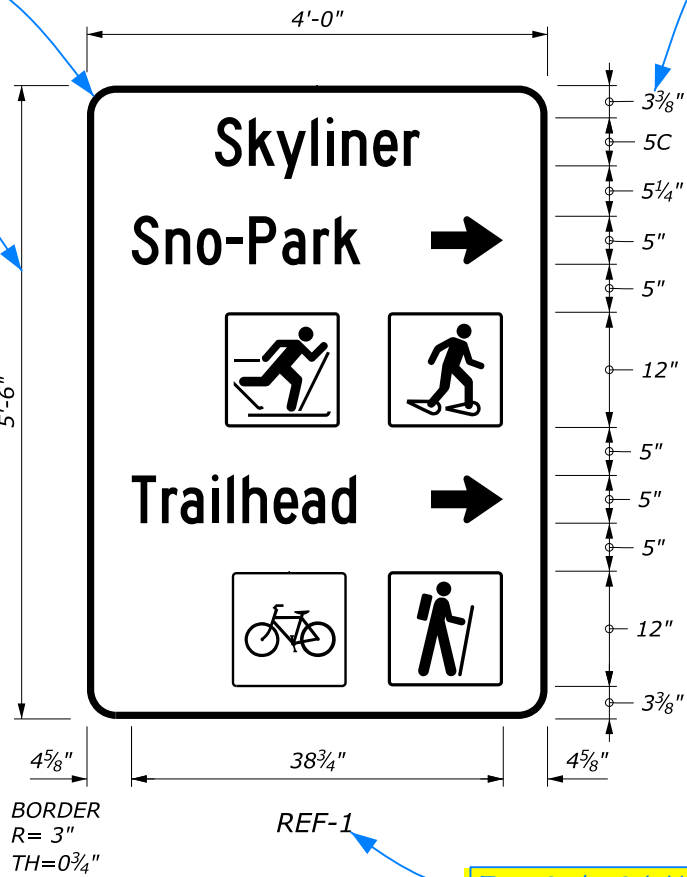
W8 - SPECIAL
(Black lettering and borders on yellow background)

Text Style: Notes

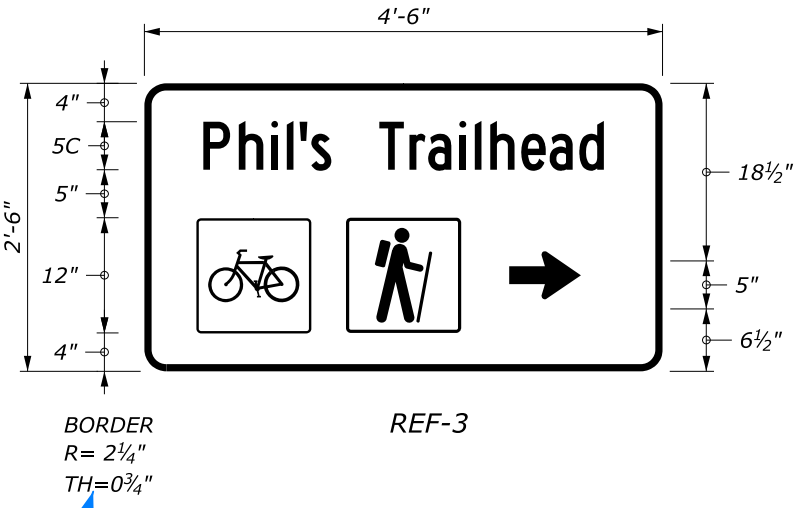
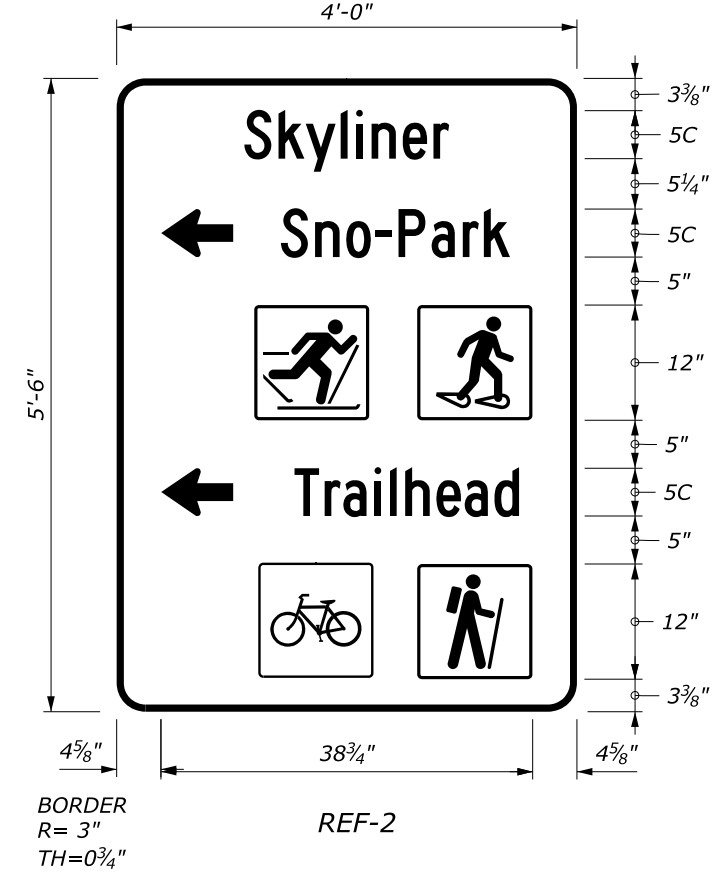
Signs created in GuidSIGN and referenced into sheet

Dimension Style Orientation is Aligned

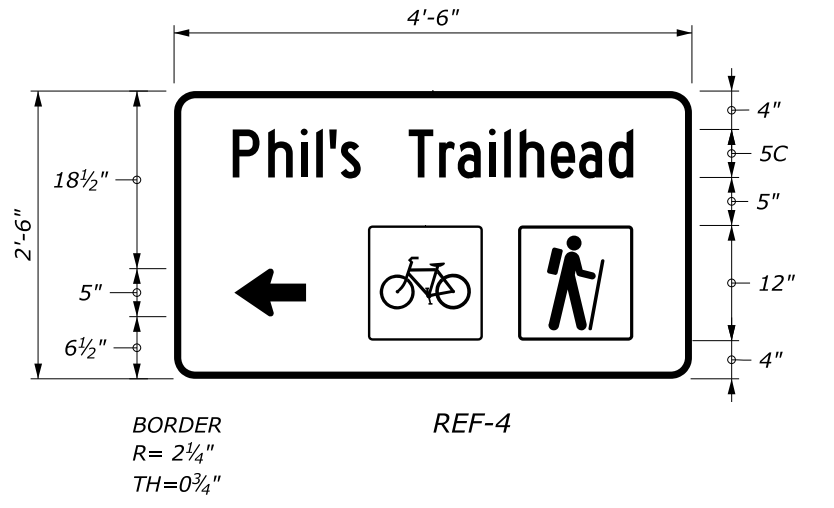
Dimension Styles Change Text Orientation to Horizontal



Text Style: Sub Heading



Text Style: Notes



NOTE:

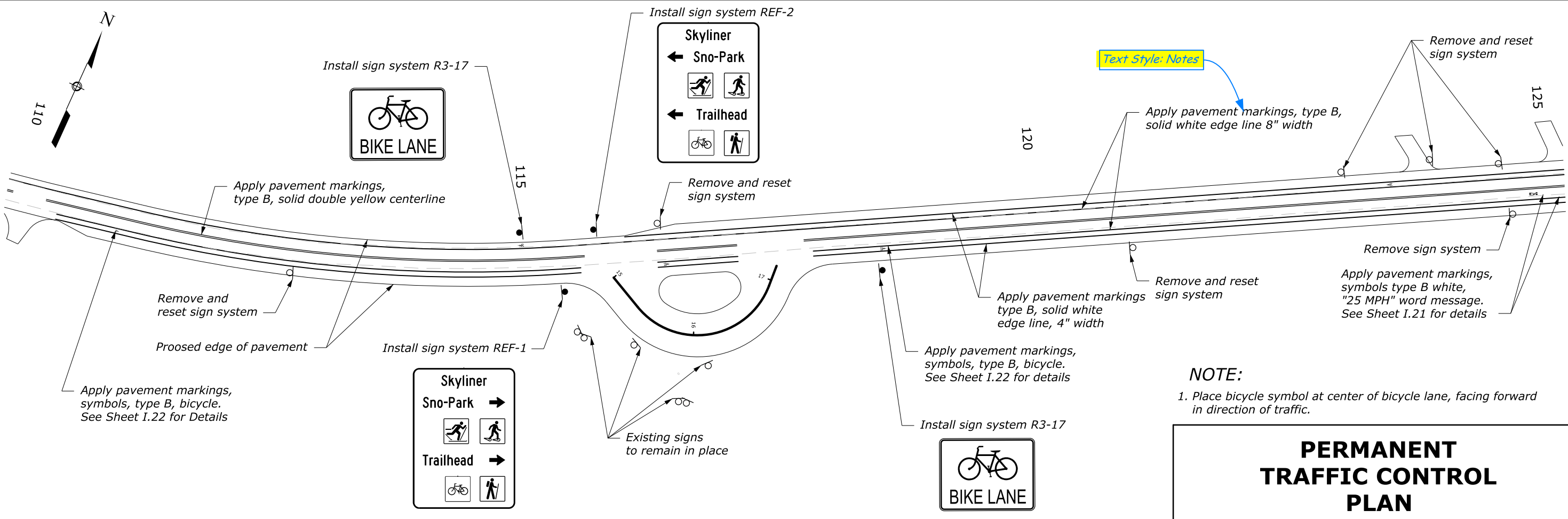
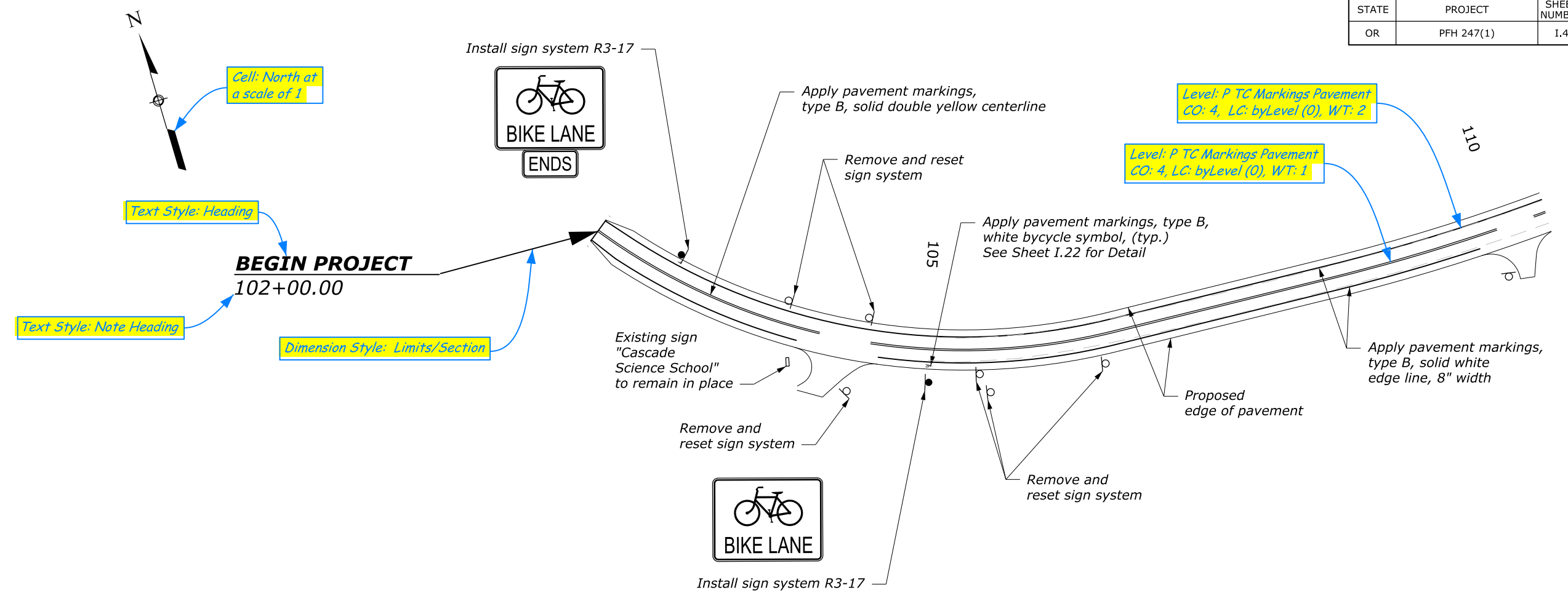
- All signs are white on brown unless otherwise noted.
- Recreation symbols are 12" x 12" with borders.

Two Lines in Title use Spacing of 1

SPECIAL SIGN PANEL DETAILS

STATE	PROJECT	SHEET NUMBER
OR	PFH 247(1)	I.4

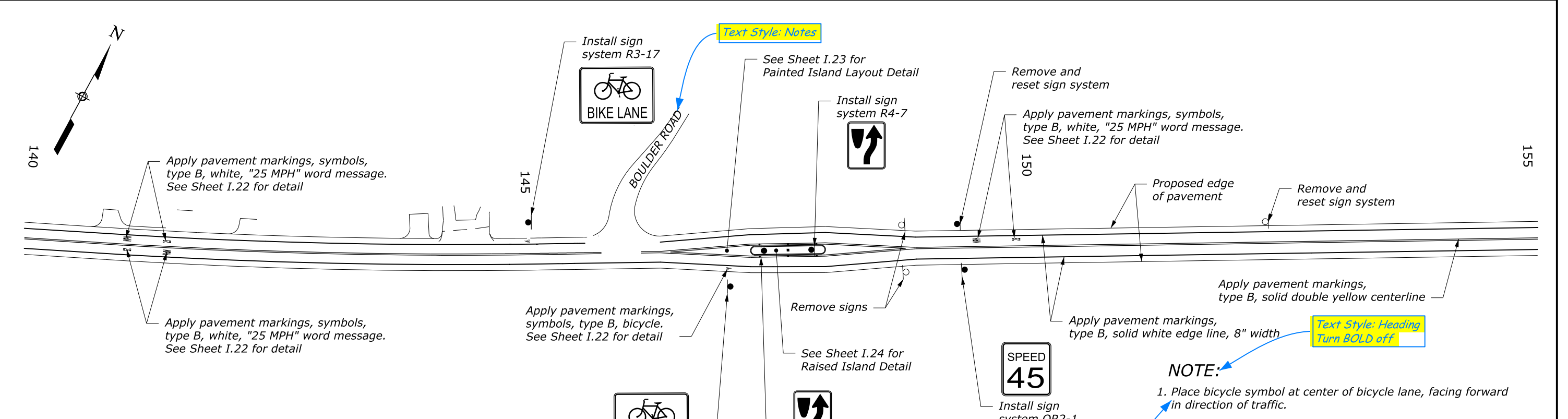
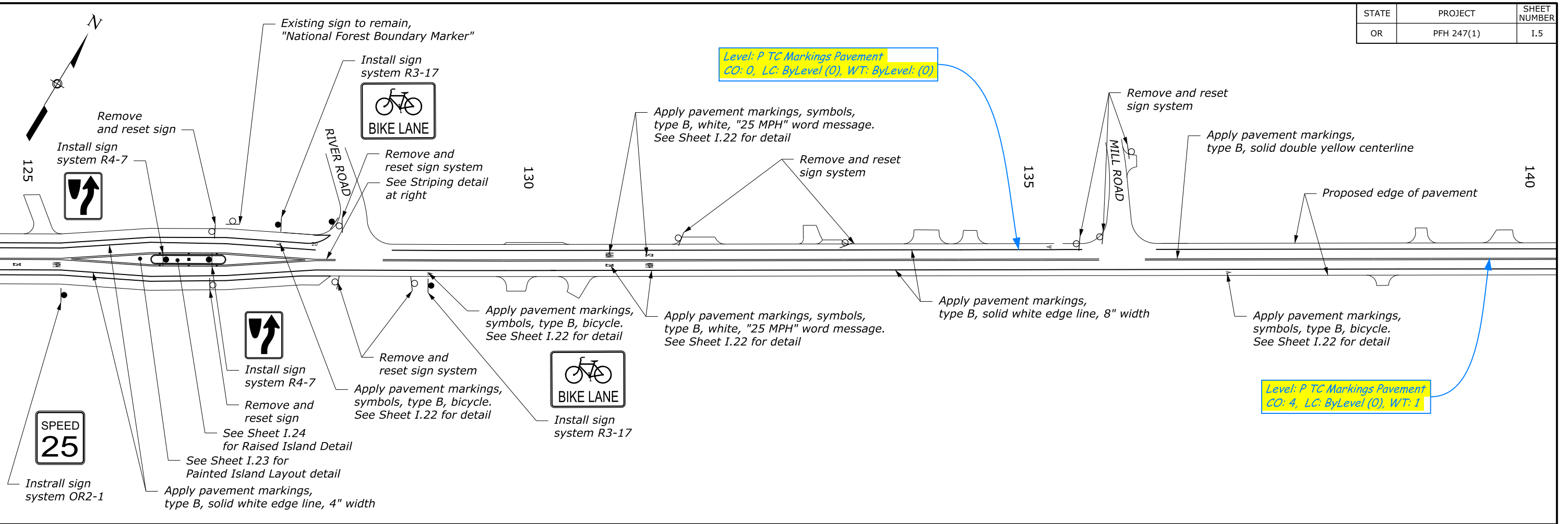
08/2017 D. Checker
 08/2017 Checked by:
 A. Designer
 Designed by:
 20 September 2017 10:05 AM
 c:\myfiles\pw_production\00267745\of24701_pd.dgn [USC Sheet]



PERMANENT TRAFFIC CONTROL PLAN

STATE	PROJECT	SHEET NUMBER
OR	PFH 247(1)	I.5

08/2017 D. Checker
 08/2017 A. Designer
 20 September 2017 10:06 AM
 c:\myfiles\pw_production\00267745\of24701_pe.dgn [USC Sheet]



PERMANENT TRAFFIC CONTROL PLAN

Text Style: Notes

Text Style: Heading
Turn BOLD off