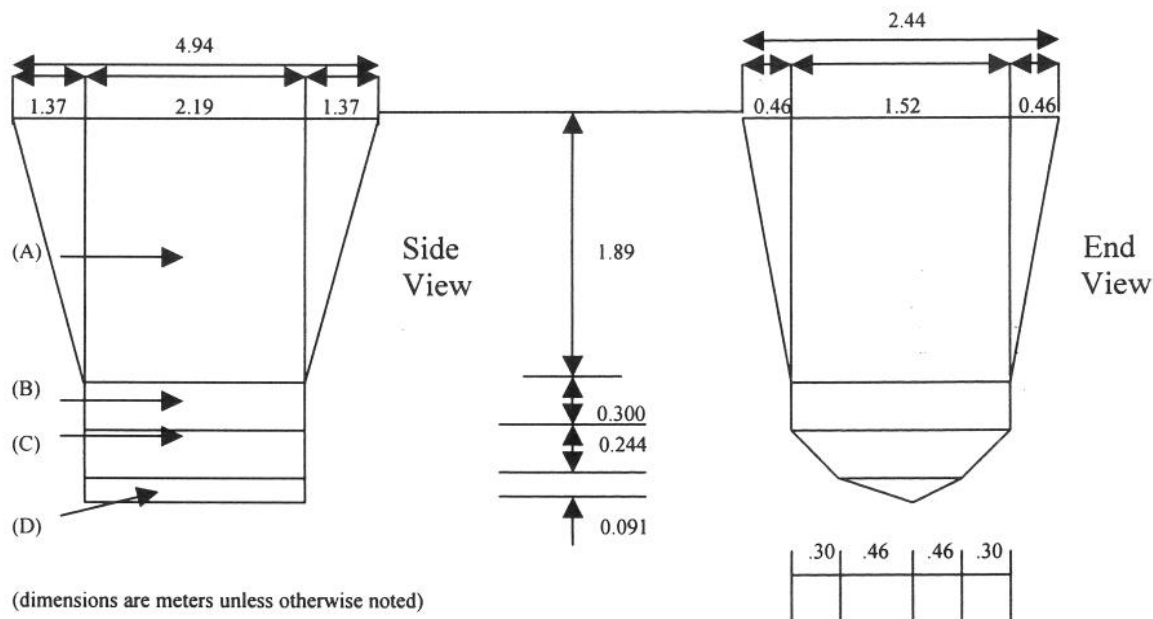


Appendix B

Truck Measurement Example

Truck No. ? (tractor)
Trailer No. ? (belly dump)

Project Name XXXXXXXXXXXXXXXX
Project Number XX XXX XXXX (X)



Volume (A) (Use prismoidal formula, $V = \frac{h}{b} (A_1 + (4A_m + A_2))$)

$$h = 1.89$$

$$A_1 = 4.94 \times 2.44 = 12.05$$

$$A_2 = 2.19 \times 1.52 = 3.33$$

$$A_m = \frac{(4.94 + 2.19) \times (2.44 + 1.52)}{2} = 7.07$$

$$V = \frac{1.89}{b} (12.05 + (4 \times 7.07) + 3.33) = 13.753$$

Volume (B)

$$V = 2.19 \times 1.52 \times 0.30 = 0.999$$

Volume (C)

$$V = 2.19 \times \frac{1.52 + 0.92}{2} \times 0.244 = 0.652$$

Volume (D)

$$V = 2.19 \times \frac{0.92}{2} \times 0.091 = 0.092$$

$$\text{Total Volume} = 15.496 \text{ m}^3$$

Composed By: _____

Checked By: _____