

FLH Sample Plans – Title Sheet

General

Note: Information shown on these sheets is for illustrative purposes only and is not an exact representation of a project. The items shown are not all encompassing. For each project, discuss with the project team the information needed to meet the project needs.

There are two examples shown.

Example 1: Includes a typical FLAP title sheet for an internally delivered job with CFL/WFL signature requirements.

To meet EFL requirements the following changes are necessary:

- Add date matching the advertisement date or the last date changes were made under DOT logo
- Remove Signature block from bottom right

Example 2: Includes a typical NPS title sheet for an A/E delivered job with EFL signature requirements.

To meet CFL/WFL requirements the following changes are necessary:

- Remove date under DOT logo
- Add signature block to the bottom right

To create the Title sheet, go to <https://highways.dot.gov/federal-lands/design/plan-prep/templates> and download the A_Sheets.dgn file.

In this file there are five models:

- Maps model: Draw area map to scale in this model
- Title Sheet No NPS: Title sheet model for all other project types
- Title Sheet NPS: Title sheet model for NPS projects
- Sheet Index: For use when Section Index is placed on the title sheet
- Vicinity Map: Vicinity map model

Choose the correct title sheet model for the project type. Do not place additional partner logos on the title sheet.

Project Name and number

The sheet contains smart text. The project number, name, county and NPS drawing numbers (if applicable) populate from the workset. These must match the information contained in DELPHI.

Key Map

Place the appropriate key map from the cell library in the upper left corner of the title sheet. Add project location text callout that orients the contractor towards the part of the state where the project is found.

FLH Sample Plans – Title Sheet

Type of Construction

Enter a short description of the major work associated with the project. This enables bidders to see immediately the main items of work. For consistency, match the description of work shown on other PS&E documents (Masterworks, HDS, etc.).

Area Map

The Area map provides a more precise project location to tell the Contractor how to get to the project site. Ideally the Area Map will include some detail from the Key Map. Be sure to include a north arrow, scale, project location, location of key locations near the project, and label important features (roads, rivers, towns). Map can be drawn manually or background imagery can be used. Coordinate with the project team.

Preliminary Stamp

For all plans not ready for advertisement, place a *Not for Construction* watermark or stamp in the pdf. This can be done in Blue

Sheet Index/Section Index

Show a sheet index for all projects. If the entire index does not fit on the title sheet, place a section index on the title sheet and place the sheet index on the next sheet following the title sheet in the plan set (Sheet A.2).

The order of the sheet index is based on the order of the FP. Place sheets in the plan set in the order they are listed below. Do not change Section numbers. If a section is not applicable to the plan set skip that letter and move to the next appropriate section.

- **A Sheets:** Basic project information
 - Title sheet
 - Sheet index (if necessary)
 - Symbols and Abbreviations (Std 101-1)
 - Vicinity map
 - Survey Control
- **B Sheets:** Summary of quantities and tabulation of quantities
 - Summary of quantities
 - Tabulation of quantities
 - Place tabulations on individual sheets in order of FP section
- **C Sheets:** Typical sections
 - Mainline typical sections
 - Approach road typical sections
- **D Sheets:** Mainline plan and profile and plan/plan sheets
- **E Sheets:** Approach road plan and profile and plan/plan sheets
- **F Sheets:** Parking lot and Turnout/Pullout layout sheets
- **G Sheets:** Erosion Control (Sections 157)
 - Layouts
 - Project specific details
 - Standards

- **H Sheets:** Earthwork and grading (Division 200)
 - Layouts
 - Project specific details
 - Standards
- **I Sheets:** Earth Retaining Systems and Slopes (Division 250)
 - Layouts
 - Project specific details
 - Standards [Placed Riprap, MSE Wall, Gabion Wall, etc.]
- **J Sheets:** Pavements (Divisions 300, 400, 500)**
 - Layouts
 - Project specific details
 - Standards [Concrete Pavement, Pavement Transitions, Pavement Patching, Crack Sealing]
- **K Sheets:** Bridge (Division 550)
 - Layouts
 - Project specific details
 - Standards
- **L Sheets:** Drainage (Sections 601-608)**
 - Drainage profile layouts
 - Project specific details
 - Standards
- **M Sheet:** Water and Sanitary Sewer (Sections 611, 612)**
 - Layouts
 - Project specific details
 - Standards
- **N Sheets:** Incidental Construction (Sections 609, 610, 613, 614, 616-621)**
 - Layouts
 - Project specific details
 - Standards
- **O Sheets:** Permanent Vegetation (Sections 624-627, 629)**
 - Layouts
 - Project specific details
 - Standards
- **P Sheets:** Temporary Stream Diversion (Section 628)
 - Layouts
 - Project specific details
 - Standards
- **Q Sheets:** Permanent Traffic Control (Sections 633, 634)**
 - Layouts
 - Project specific details
 - Standards

FLH Sample Plans – Title Sheet

- **R Sheets:** Temporary Traffic Control (Section 635)
 - Layouts
 - Project specific details
 - Standards
- **S Sheets:** Electrical Systems (Section 636)
 - Layouts
 - Project specific details
 - Standards
- **T Sheets:** Roadside Development (Section 646)
 - Layouts
 - Project specific details

** In sections that include multiple FP sections, group the layouts, project-specific details, and standards for a single FP Section together. For example:

- 601 Layouts
- 601 Project Specific details
- 601 Standards
- 602 Layouts
- 602 Project Specific details
- 602 Standards

***Do not include Cross Sections in the plan set. They should be included with the physical data information.

U. S. DEPARTMENT OF TRANSPORTATION FEDERAL HIGHWAY ADMINISTRATION

PLANS FOR PROPOSED PROJECT

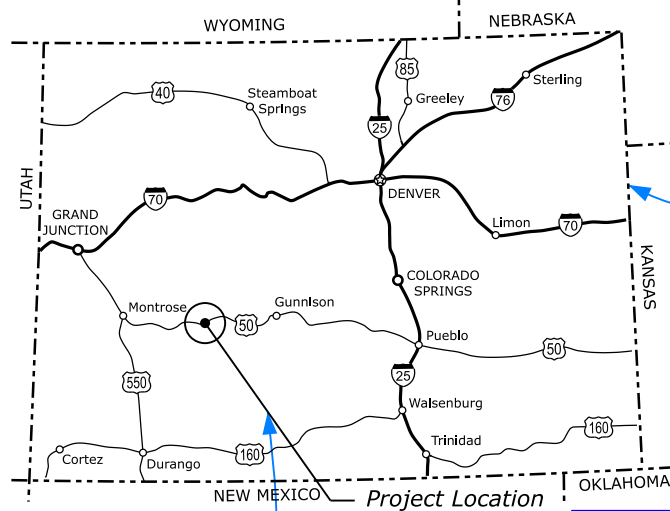
CO FLAP US50(1)

LITTLE BLUE CREEK CANYON

GUNNISON COUNTY

SCHEDULE A 2.14 MILES

SCHEDULE B 4.17 MILES



COLORADO KEY MAP

Add project location.
Element template:
Annotation\General\
Plan notes Dotted
Weight = 2

Information shown is for illustration purposes only
and is not an exact representation of a project.

Cell library: KeyMaps
Cell: [State Abbreviation]
Element template:
Annotation\General\Graphics

Insert from https://highways.dot.gov/federal-lands/design/plan-prep/templates/Sheet_Index.xls
at scale = 1

Map drawn in Maps Model
Utilize publicly available maps
or draw to scale manually
Discuss use of aerial imagery
with project team

Element template:
Annotation\General\Agency (Vert)
Text size = 0.008
Background color = BG

Cell: HWY.XXX
Scale: 0.7
Cell Library: Work_dd
Element template:
Annotation\General\Graphics

Project location text
Element template:
Annotation/General/Heading

Cell: North
Scale: 1
Cell Library: Work_dd
Element template:
Annotation\Sheets\Plan\
North Arrow

Cell: Scale
Scale: 1
Cell Library: Work_dd
Element template:
Annotation\General\Graphics

Signatures and dates
Font: 008 Script Italics LB

TYPE OF CONSTRUCTION:

Road reconstruction & rehabilitation, rock excavation, rockfall mitigation, roadway excavation, retaining walls, grading, drainage, aggregate base and asphalt

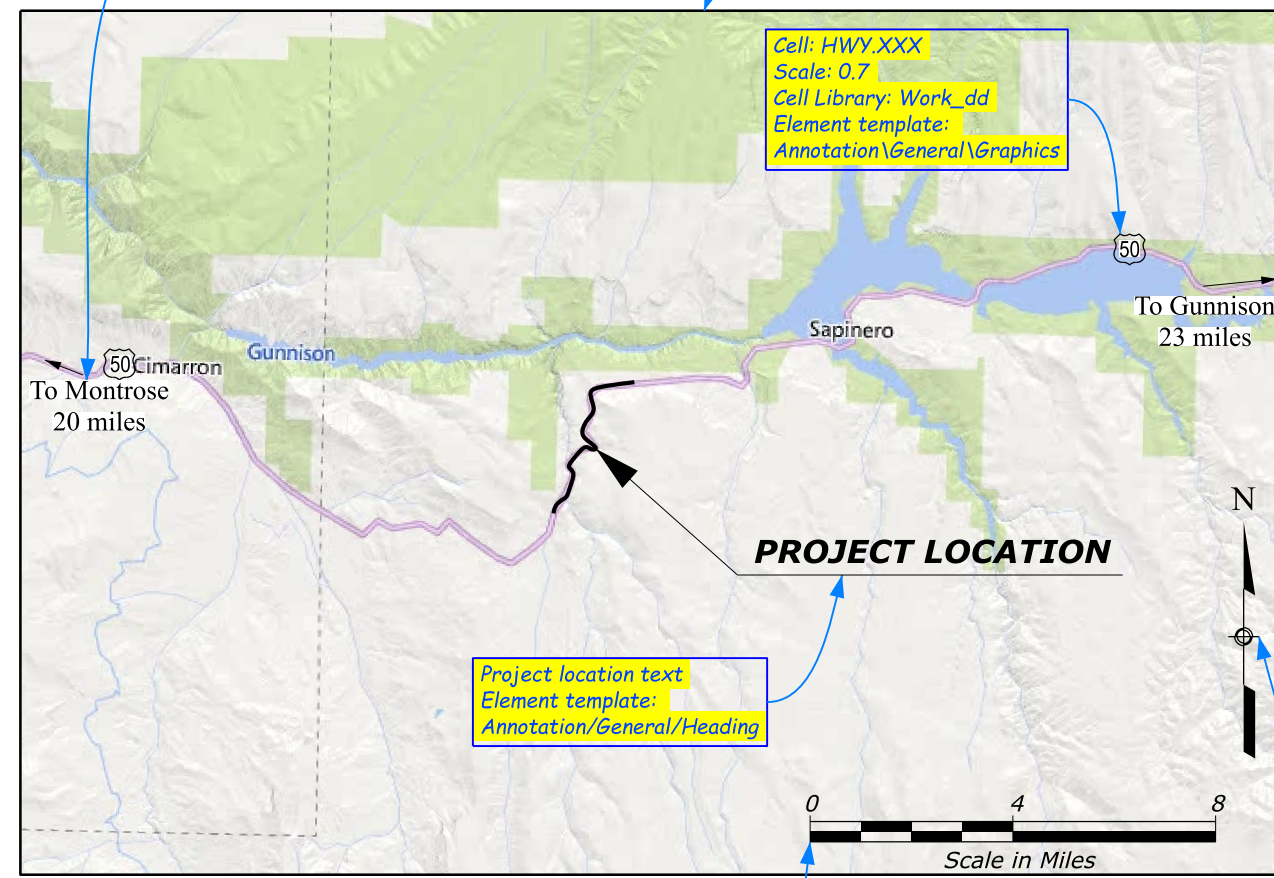
DESIGN DESIGNATION:

ADT (2021)	3023
ADT (2041)	3173
% Truck	12%
Design Speed	40 MPH: 587+00 - 725+00 55 MPH: 725+00 - 767+00 65 MPH: 767+00 - 807+00
e (max)	8.0%

Insert applicable design designations

SPECIFICATION:

Standard Specifications for Construction of Roads and Bridges on Federal Highway Projects, FP-24



SHEET INDEX	
A.	GENERAL INFORMATION
A.1	TITLE SHEET
A.2	SHEET INDEX
A.3	PLAN SYMBOLS AND ABBREVIATIONS
A.4	VICINITY MAP
A.5	SURVEY CONTROL
B.	SUMMARY OF QUANTITIES
B.1-2	SUMMARY OF QUANTITIES
B.3-22	TABULATION OF QUANTITIES
C.	TYPICAL SECTIONS
C.1-2	TYPICAL SECTIONS
D.	PLAN-PROFILE
D.1-5	PLAN-PROFILE
E.	APPROACH ROADS
E.1-4	APPROACH ROAD PLAN-PROFILE
F.	PARKING LOTS
F.1	PARKING LOT LAYOUT
G.	SOIL EROSION AND SEDIMENT CONTROL
G.1	SOIL EROSION AND SEDIMENT CONTROL PLANS
G.2-4	PROJECT DETAILS AND STANDARD DRAWINGS
H.	EARTHWORK AND GRADING PLANS
H.1	GRADING PLANS
H.2	PROJECT DETAILS AND STANDARD DRAWINGS
I.	EARTH RETAINING SYSTEMS
I.1-2	MSE WALL LAYOUTS
I.3-4	ROCKERY LAYOUTS
I.5-7	PROJECT DETAILS AND STANDARD DRAWINGS
J.	PAVEMENT
J.1	PROJECT DETAILS AND STANDARD DRAWINGS
K.	BRIDGE
K.1-66	STRUCTURAL PLANS
L.	DRAINAGE
L.1-10	DRAINAGE PROFILES
L.11-20	PROJECT DETAILS AND STANDARD DRAWINGS
M.	WATER AND SANITARY SEWER
M.1-4	LAYOUTS
M.5-24	PROJECT DETAILS AND STANDARD DRAWINGS
N.	MISCELLANEOUS DETAILS
N.1-7	PROJECT DETAILS AND STANDARD DRAWINGS
O.	PERMANENT VEGETATION
O.1-4	PERMANENT VEGETATION LAYOUTS
O.5-8	PROJECT DETAILS AND STANDARD DRAWINGS
Q.	PERMANENT TRAFFIC CONTROL
Q.1-4	SIGNING AND STRIPING LAYOUTS
Q.5-12	PROJECT DETAILS AND STANDARD DRAWINGS
R.	TEMPORARY TRAFFIC CONTROL
R.1-2	TEMPORARY TRAFFIC CONTROL PLAN
R.3-10	PROJECT DETAILS AND STANDARD DRAWINGS

Start from template at https://highways.dot.gov/federal-lands/design/plan-prep/templates/File:A_Sheets.dgn
Model: Title Sheet FLAP

PROJECT	SHEET NUMBER
CO FLAP US50(1)	A.1

APPROVED:
See PDDM Section 9.6.4 and division supplements for required title sheet signatures (EFL: No signatures necessary - Remove signature block & use signature memo) (CFL & WFL: Chief of Engineering required; Partner dependent on project)

/s/ Curtis Scott
Chief of Engineering,
Central Federal Lands Highway Division
8/17/2020
DATE

/s/ Jason Smith
Regional Transportation Director
Colorado Department of Transportation
2/28/2020
DATE

PLANS PREPARED BY
**U.S. DEPARTMENT OF TRANSPORTATION
FEDERAL HIGHWAY ADMINISTRATION**
CENTRAL FEDERAL LANDS HIGHWAY DIVISION
DENVER, CO



Know what's below.
Call before you dig.
www.call811.com

PROJECT MANAGER
J. KNOWLES
Insert PM name

PROJECT	SHEET NUMBER
TN ERFO GRSM 2020-1(1)	A.1

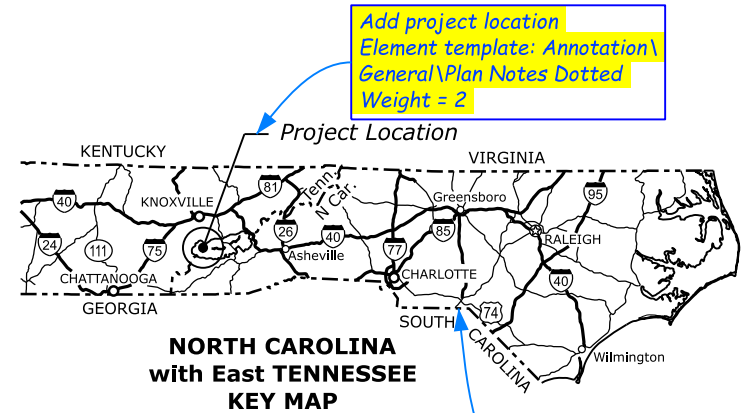
U. S. DEPARTMENT OF THE INTERIOR NATIONAL PARK SERVICE GREAT SMOKY MOUNTAINS NATIONAL PARK

PLANS FOR PROPOSED PROJECT
TN ERFO NP GRSM 2020-1(1)
**REPAIR STORM DAMAGE ON
TOWNSEND ENTRANCE ROAD**



SECTION INDEX	
A.	GENERAL INFORMATION
B.	SUMMARY OF QUANTITIES
C.	TYPICAL SECTIONS
D.	PLAN-PROFILE
E.	APPROACH ROADS
F.	PARKING LOTS
G.	SOIL EROSION AND SEDIMENT CONTROL
H.	EARTHWORK AND GRADING
I.	EARTH RETAINING SYSTEMS AND SLOPES
J.	PAVEMENT
K.	BRIDGE
L.	DRAINAGE
M.	WATER AND SANITARY SEWER SYSTEMS
N.	MISCELLANEOUS DETAILS
O.	PERMANENT VEGETATION
P.	TEMPORARY STREAM DIVERSIONS
Q.	PERMANENT TRAFFIC CONTROL
R.	TEMPORARY TRAFFIC CONTROL
S.	ELECTRICAL SYSTEMS
T.	ROADSIDE DEVELOPMENT

See Sheet A.2 for complete Sheet Index.



Add project location
Element template: Annotation\General\Plan Notes Dotted
Weight = 2

Cell library: KeyMaps
Cell: [State Abbreviation]
Element template: Annotation\General\Graphics

Insert from <https://highways.dot.gov/federal-lands/design/plan-prep/templates/Sheet Index.xls> at scale=1
Spreadsheet named range: Section

TYPE OF CONSTRUCTION:
Rockery, shoulder construction, mill and overlay

DESIGN DESIGNATION:

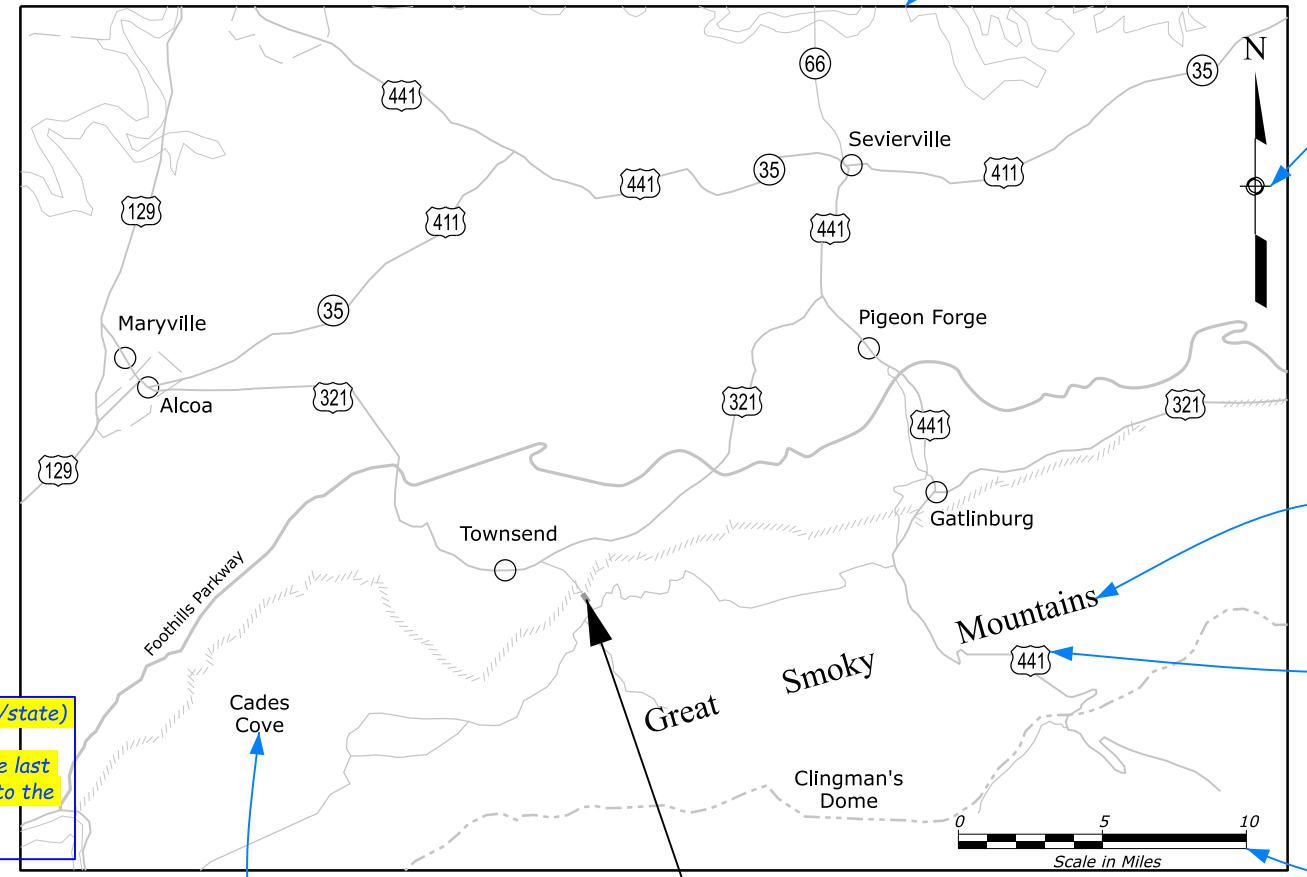
ADT/SADT (2022)	3,600/4,400
ADT(2032)	3,800
% Truck	N/A
Design Speed	40 MPH
e (max)	NC

Insert applicable design designations

Map drawn in Maps Model
Utilize publicly available maps or draw to scale manually
Discuss use of aerial imagery with project team

Information shown is for illustration purposes only and is not an exact representation of a project.

SPECIFICATION:
Standard Specifications for Construction of Roads and Bridges on Federal Highway Projects, FP-24



Cell: North
Scale: 1
Cell library: Work_dd
Element template: Annotation\Sheets\Plan\North Arrow

Element template: Annotation\General\Agency (Vert)
Text size = 0.008
Background color: BG

Cell HWY.XXX
Scale: 0.7
Cell Library: Work dd
Element template: Annotation\General\Graphics

Cell: Scale
Scale: 1
Cell library: Work dd
Element template: Annotation\General\Graphics

See PDDM Section 9.6.4 and division supplements for required title sheet signatures
EFL: No signatures necessary - use signature memo
CFL/WFL: Chief of Engineering required; Partner signature dependent on project

Add A/E firm
Remove for internal jobs

PLANS PREPARED BY

Insert Name and Logo for A/E Firm here

FOR
**U.S. DEPARTMENT OF TRANSPORTATION
FEDERAL HIGHWAY ADMINISTRATION**
EASTERN FEDERAL LANDS HIGHWAY DIVISION
ASHBURN, VIRGINIA
AUGUST 2025

Update FLH division (city/state)
EFL: Add date matching advertisement date or the last date changes were made to the plans
CFL/WFL: Remove date

Map reference text
Element template: Annotation\General\Small (Vert)

Project location text
Element template: Annotation\General\Heading



Know what's below.
Call before you dig.
www.call811.com



Show logo if park is a WHS
<https://whc.unesco.org/en/statesparties/us>

PROJECT MANAGER
K. ROMAN

Insert PM name

PROJECT	SHEET NUMBER
TN ERFO GRSM 2020-1(1)	A.2

Add PMIS and Drawing number for NPS project
Remove for non NPS jobs

Place Sheet Index.xls as link.
Scale = 1
Spreadsheet named ranges:
Index1 and Index2

Plan Section Index Name

Plan Section Designator

SHEET INDEX	
A.	GENERAL INFORMATION
A.1	TITLE SHEET
A.2	SHEET INDEX
A.3	PLAN SYMBOLS AND ABBREVIATIONS
A.4	VICINITY MAP
A.5	SURVEY CONTROL
B.	SUMMARY OF QUANTITIES
B.1-2	SUMMARY OF QUANTITIES
B.3-22	TABULATION OF QUANTITIES
C.	TYPICAL SECTIONS
C.1-3	TYPICAL SECTIONS
D.	PLAN-PROFILE
D.1-5	PLAN-PROFILE
E.	APPROACH ROADS
E.1-4	APPROACH ROAD PLAN-PROFILE
F.	PARKING LOTS
F.1	PARKING LOT LAYOUT
G.	SOIL EROSION AND SEDIMENT CONTROL
G.1	SOIL EROSION AND SEDIMENT CONTROL PLANS
G.2	157-2 TEMPORARY INLET PROTECTION STANDARD
G.3 - G.4	157 SOIL EROSION AND SEDIMENT CONTROL STANDARDS
H.	GRADING PLANS
H.1	GRADING PLANS
H.2	204A EMBANKMENT BENCHING DETAIL
H.3	204B SUBEXCAVATION DETAIL
I.	RIPRAP AND WALLS
I.1-2	MSE WALL LAYOUTS
I.3-4	ROCKERY LAYOUTS
I.5-I.6	251 RIPRAP STANDARDS
I.7	252A ROCKERY DETAIL
I.8	257-5 CONTRACTOR DESIGNED MSE WALL STANDARD
J.	PAVEMENT
J.1	401A PAVEMENT TRANSITIONS DETAIL
J.2-J.3	501 MINOR CONCRETE PAVMENT STANDARDS
K.	BRIDGE
K.1-66	BRIDGE STRUCTURAL SHEETS

Note: Only use separate index sheet
when Sheets Index does not fit
on the Title Sheet.

Information shown is for illustration purpose only
and is not an exact representation of a project.

SHEET INDEX (cont.)	
L.	DRAINAGE
L.1-10	DRAINAGE PROFILES
L.11-12	601 MINOR CONCRETE HEADWALL STANDARDS
L.13-15	602 PIPE CULVERT STANDARDS
L.16	604-1 CATCH BASIN STANDARD
L.17	605-1 UNDERDRAIN DETAILS
M.	WATER AND SANITARY SEWER SYSTEMS
M.1-4	UTILITY RESOLUTION LAYOUTS
M.5	612A SEWER LINE TRENCH DETAIL
N.	MISCELLANEOUS DETAILS
N.1	609A CURB DETAILS
N.2	610-2 PARALLEL CURB RAMP STANDARD
N.3-4	617 GUARDRAIL STANDARDS
N.5	619A FENCE DETAIL
N.6	619B GATE DETAIL
N.7	619-1 CATTLE GUARD STANDARD
O.	PERMANENT VEGETATION
O.1-4	PERMANENT VEGETATION LAYOUTS
O.5	626-1 TREES AND SHRUBS PLANTING METHODS STANDARD
P.	TEMPORARY STREAM DIVERSION
P.1	TEMPORARY STREAM DIVERSION LAYOUT
Q.	PERMANENT TRAFFIC CONTROL
Q.1-4	SIGNING AND STRIPING LAYOUTS
Q.5	633A DELINEATORS DETAIL
Q.6	633-7 PERMANENT SIGN INSTALLATION, WOOD POSTS STANDARDS
Q.7-8	634 PERMANENT PAVEMENT MARKING STANDARDS
R.	TEMPORARY TRAFFIC CONTROL
R.1	TEMPORARY TRAFFIC CONTROL DETOUR LAYOUT
R.2-9	635 TEMPORARY TRAFFIC CONTROL STANDARDS
S.	ELECTRICAL SYSTEMS
S.1	636A TELEPHONE PULLBOX DETAIL
S.2	636B ELECTRICAL SPLICE BOX DETAIL
S.3-4	636 INDUCTIVE LOOP STANDARDS
T.	ROADSIDE DEVELOPMENT
T.1	646A MAILBOX TURNOUT AND INSTALLATION DETAIL
T.2	646B BICYCLE STORAGE RACK DETAIL
T.3	646C PEDESTRIAN RAIL DETAIL

SHEET INDEX

FLH Sample Plans – Symbols and Abbreviations Standard

General

Include Standard drawing Std101-1.dgn in all plan sets. Place standard after the sheet index. Do not make changes to the standard drawing. All special symbols and abbreviations should be placed elsewhere in the plans, typically the plan and profile sheets.

Δ total central angle
abut. abutment
ADT average daily traffic
AH ahead
AMEND amendment
appr. approach

b.f. both faces
BK back
BL baseline
BM bench mark
BP balance point
br. bridge
brg. bearing

c.c. center to center
¢ or CL centerline
CMP corrugated metal pipe
conn. connection
constr. jt. construction joint
cont. continuous
CS point of curve to spiral
CUFT cubic foot (feet)
CUYD cubic yard(s)
CW curve widening

D or dia. diameter
or Ø diameter
DHV design hourly volume
diag. diagonal
diaph. diaphragm

E east
e superelevation rate
e.f. each face
El. 94.066 elevation with number
elev. elevation
emb. embankment
EOP edge of pavement
EQ or eq. equation
ESAL equivalent single axle load
ETW edge of travel way
exc. excavation
exp. jt. expansion joint

f.f. fill face
flg. flange
ftg. footing

ga. gage (gauge)
galv. galvanized

ID inside diameter

jt. joint

K length/algebraic difference

L length of curve
lat. latitude
LNFT linear foot (feet)
long. longitude
LPSM lump sum
Ls length of spiral
Lt or LT left

max. maximum
MGAL thousand gallon
MGS Midwest Guardrail System
min. minimum
mon. monument
MP mile post

N north
NC normal crown

o.c. on center
o.f. other face
o.o. out to out
OD outside diameter
OHWM ordinary high water mark

PC point of curve to tangent
PCC point of compound curve
PCS point of curve to spiral
PI point of intersection
pl. plate
POB point of beginning
POC point on curve
POE point of ending
POS point on spiral
POT point on tangent
PS point of tangent to spiral
PSC point of spiral to curve
PST point of spiral to tangent
PT point of tangent to curve
pvmt. pavement

R radius
R. range
R/W right-of-way
reinfr. reinforcement
Rt or RT right

S south
SADT seasonal average daily traffic
SC point of spiral to curve
sec. section
shldr shoulder
spa. spacing, spaces or spaced
SQFT square foot
SQYD square yard
SRS point of spiral to reverse spiral
SS point of spiral to spiral (no curve)
SSD stopping sight distance
ST point of spiral to tangent
sta. station
std. standard
stgr. stringer
stiff. stiffener
STS point of spiral to tangent spiral

T tangent length
T. township
TCE temporary construction easement
TS point of tangent to spiral
Ts tangent distance (spiraled curve)
typ. typical

V design speed
VC vertical curve
vert. vertical
vph vehicles per hour
VPI vertical point of intersection

W west

National Boundary
State Boundary
County Boundary
City Boundary
Township or Range Line
Section Line
Section Corner (Found, Projected)
1/4 Section Line
1/4 Section Corner (Found, Projected)
1/16 Section Line
1/16 Section Corner (Found, Projected)
Property Line
Parcel Number
Right-of-Way Line (Existing, Proposed)
Permanent Easement (Existing, Proposed)
Temporary Construction Easement
Federal Agency Boundary
Wilderness Boundary
Indian Reservation Boundary

Existing Roadway (Paved, Gravel)

Railroad
Trail

Check Dam

Fiber Roll

Sandbag

Silt Fence

Intermittent Drainage or Small Creek

Large Creek or River

Lake, Pond or Reservoir

Spring

Treeline; Individual Trees

Material Source; Bore Hole; Test Pit

Coordinate Grid Tick

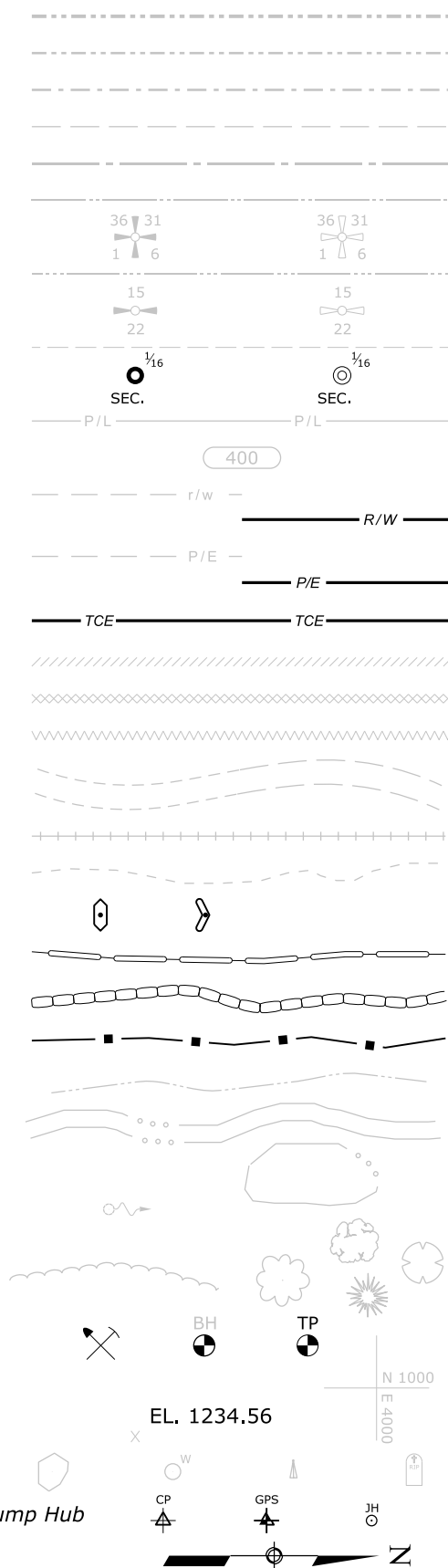
Spot Elevation

Boulder; Well; Antenna; Grave

Control Point (Terrestrial and GPS); Jump Hub

North Arrow

Riprap



NOTE:

1. Additional symbols may be shown in a legend on the appropriate plan sheet.

	EXISTING	PROPOSED
Slope Stake Limits	Top of Cut Toe of Fill	
Construction Limits (Limits of Disturbance)		LOD
Bottom of Ditch		
Fence		** **
Gate with Fence		** **
Cattle Guard		
Guardrail		
Concrete Barrier and Guard Wall		
Retaining Wall	wall face	
Signs (single, double post; portable)		
Delineator		
Building		
Pipe Culvert (arrow shows flow)		
Pipe Culvert with End Section		
Pipe Culvert with Headwall		
Pipe Culvert with Drop Inlet	DI	DI
Box Culvert		
Overhead or Above Ground Utility/Feature	P	P
Underground Utility/Feature	W	W
Utility/Feature Line Abbreviations	FM = force main FO = fiber optic G = gas IRR = irrigation O = oil P = power	SD = storm drain SS = sanitary sewer STEAM = steam T = telephone TV = CATV UD = underdrain W = water
Poles (Power, Telephone, Joint Use, Support w/Anchor)		
Street Light		
Miscellaneous Utility Features		TP
	EM = electric meter, TP = telephone pedestal, TV = CATV pedestal, UP = transformer or junction box, WF = water fountain	

NO SCALE

FLH Sample Plans – Vicinity Map

General

Describe features that assist the contractor, Federal Lands and the partners to help understand the directions and locations of the work being proposed. Show the relationship of the project work to surrounding cities, towns, landmarks, facilities and services. The Vicinity Map normally provides more detail than what is shown on the Area Map.

Include, at a minimum, the following features:

- Project begin and end locations as well as suspend/resume construction locations
- Approach road begin locations
- Trail begin and end locations
- Sections lines, boundaries, ownership information
- Location and distances to nearest cities and towns
- North Arrow and scale
- Significant landmarks (Roads, Rivers/lakes, Hilltops/mountain ranges),
- Government provided staging areas
- Government provided material/water sources and pits
- Government provided housing
- Environmentally sensitive areas

Length of Project Table

Show breakdown of project sections, total length and lane miles. Show bridge and trail locations. Add schedules and options if required.

PROJECT	SHEET NUMBER
MT NPS GLAC 10(22)	A.4

LENGTH OF PROJECT

Schedule	Station to Station	Roadway (ft)	Bridge (ft)	Lane miles (mi)	Trail (ft)	Trail miles (mi)
MAIN 01						
A/B	849+24 to 1034+00	18,476				
A/B	1034+00 to 1034+60		60			
B	1084+31 to 1084+89	58				
B	1172+41 to 1173+21	80				
TRAIL 01						
A/B	100+00 to 116+50				1,650	
A	TOTALS (ft)	18,476	60		1,650	
A	TOTALS (mi)	3.51		7.02	0.31	0.31
B	TOTALS (ft)	18,614	60		1,650	
B	TOTALS (mi)	3.54		7.08	0.31	0.31

Insert from spreadsheet at scale = 1
 Show breakdown of project sections and total length.
 Show bridge and trail locations and lane/trail miles

Text element:
 Template Annotation/General/Agency (Vert);
 Override: TX=0.014

Streams or Creeks w/Line string;
 Template Annotation/General/Graphics;
 Override: WT=1, CO=239, LC=E_Intermittent_Drainage

Element type: Note
 Element template: Annotation/General/Plan notes Dotted
 Change dimension vertical location to underline.
 Override: text size=0.008

Note element;
 Template: Annotation/General/Subheading
 Override: No bold
 Dimension style: Limits/Section

Element type: Text
 Element template: Annotation/General/Plan notes Feet

Text element;
 Template Annotation/General/Plan notes Feet;
 Override: No italics

River w/ Line string;
 Template: Annotation/General/Graphics;
 Override: WT=2, CO=239, LC=Edge_of_Water

Centerline of road
 Element type: Centerline of road
 Element Template: Linear/Alignments\BL

Cell: SpotElev
 Scale: 1
 Cell Library: Work_dd
 Edit text for name

Dimension Element type;
 Template Annotation/General/Plan notes Feet

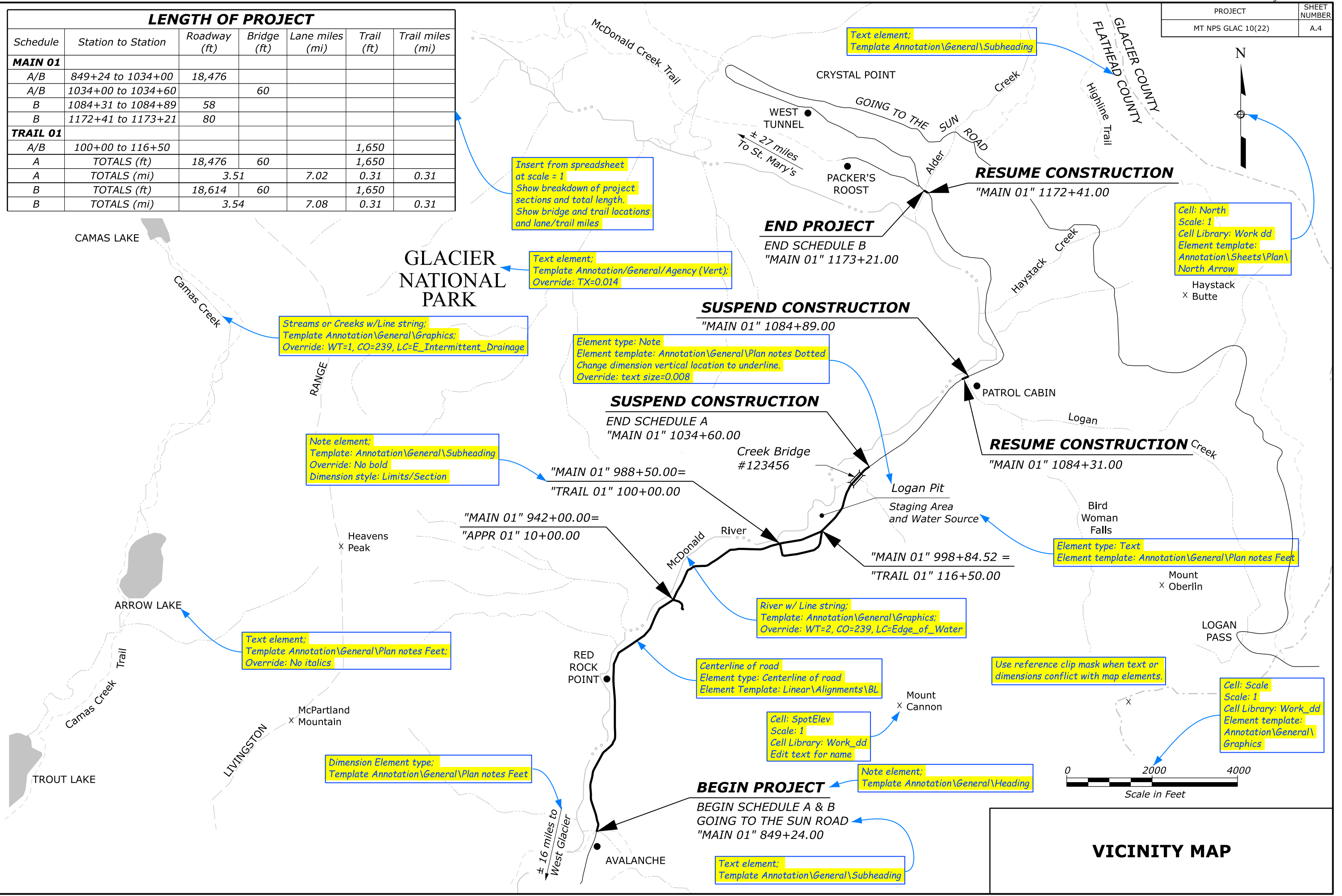
Use reference clip mask when text or dimensions conflict with map elements.

Cell: Scale
 Scale: 1
 Cell Library: Work_dd
 Element template: Annotation/General/Graphics

Note element;
 Template Annotation/General/Heading

Text element;
 Template Annotation/General/Subheading

c:\pwwork\w\10658991\Vicinity Map.dgn [Vicinity Map] 11 December 2025 3:56 PM



VICINITY MAP

FLH Sample Plans – Survey Control

General

Include a Survey Control Sheet on all projects with survey. Survey will create and provide the spreadsheet containing pertinent information to be incorporated into the plan set.

