

Stoddard Bridge

Salmon River Road (FS 30), 39 Miles West of North Fork, Idaho

August 29, 2025

Project Number:
ID FS ERFO 2017(1)-29(1)

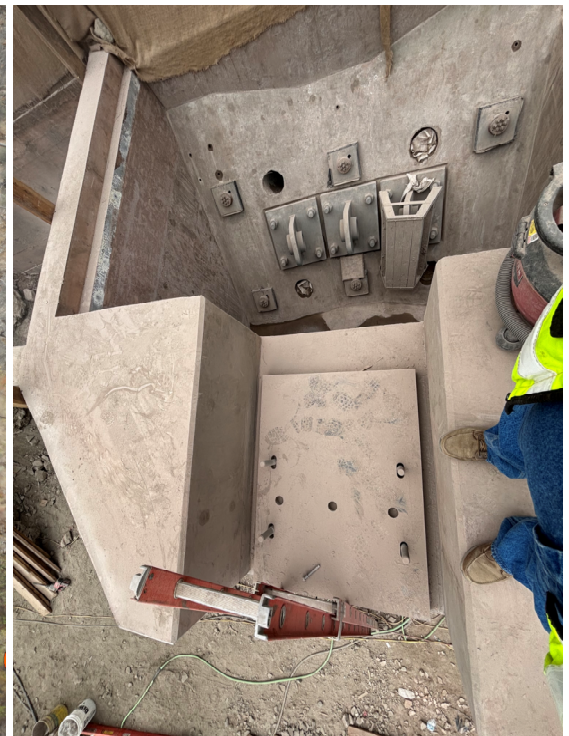
FHWA Contact:
Todd Butikofer, PM
Todd.butikofer@dot.gov
(360)606-1445

Address:
SVBIC
803 Monroe St.
#110
Salmon, Idaho 83467

Contractor:
Inland Crane Inc.
6931 Supply Way
Boise, Idaho 83716-5540

Notice to Proceed:
June 17, 2022

Expected Completion Date:
Winter 2025



Setting the Tower Saddles and a Abutment 1 Saddle Bearing and Anchor Block Vault.

Source of photos: FHWA

Construction Activities & Upcoming Work

Inland Crane, Inc. (ICI) is continuing to work on erecting the tower for the bridge. This work will continue until the tower is complete. An additional temporary tower has been erected on top of the tower to facilitate the hanging of the suspension cables, as well as the saddles have been set. Other temporary works for installing the suspension cables has begun to be set into place on the ground as well.

ICI still has one last small concrete pour at Abutment 2, currently planned for next week.

With the tower erection there could be short traffic delays of up to 20 minutes, to facilitate the erection of the bridge.

Please Use Caution when traveling and be aware of oncoming traffic, during day, night, weekdays, and weekends. It continues to be a single traffic lane through the construction site at the Crane Tower. Concrete barriers has been installed to protect the traveling public and the project site. The speed limit continues to be 15 mph thru this area during the 2025 Construction Season. Thank you for your cooperation and understanding.

Project Web Site: <https://highways.dot.gov/federal-lands/projects/id/fs-erfo-2017-1-29-1>

Western Federal Lands Highway Division



U.S. Department
of Transportation

**Federal Highway
Administration**