



Source: FHWA

## Nez Perce - Clearwater 2019 Repairs July 19, 2024

### Construction Activities & Upcoming Work

Construction activities have been completed on FSR 5503 (Swan Creek Rd) at M.P. 1.28 from the USFS gate. Please contact your local USFS office for road opening dates. Construction activities continue at FSR 469, Peasley Creek Road at M.P. 0.8 and M.P. 2.8. Activities include roadway excavation, Special Rock Embankment, Roadway construction and culvert cleaning. Work at FSR 469 is expected to run through out the month of July. Please be aware of truck traffic entering Hwy 14 at Peasley Creek Rd. With FSR5503 construction complete, activities will be moved to FSR470 Swiftwater Rd off Selway River road, with work beginning Monday July 22nd. Construction activities will include roadway excavation, placement of Special Rock Embankment and Gabion faced wall construction at M.P. 2.36 and M.P. 2.52. Construction at FSR470 is expected to run through the end of September 2024.

### Road Closures

FSR 5503 is currently closed to the public. Please contact local USFS office for opening dates. FSR469, Peasley Creek Rd, will be closed from Highway 14 to FSR648, Lower Cougar Rd beginning July 8th. FSR470, Swiftwater Rd, is scheduled to be closed from Selway Rd to FSR653, West Lodge Rd, beginning July 22nd until completion of construction activities.

#### Project Number:

ID ERFO FS NEZPR117  
2019-1(1)

#### FHWA Contact:

John Henderson  
john.henderson@dot.gov  
360-839-3867

#### Project Partner:

National Forest Service  
Western Federal Lands  
Highway Division

#### Contractor:

M.L. Albright & Sons, Inc.  
6182 Lapwai Rd,  
Lewiston ID 83501

#### Notice to Proceed:

09/29/2023

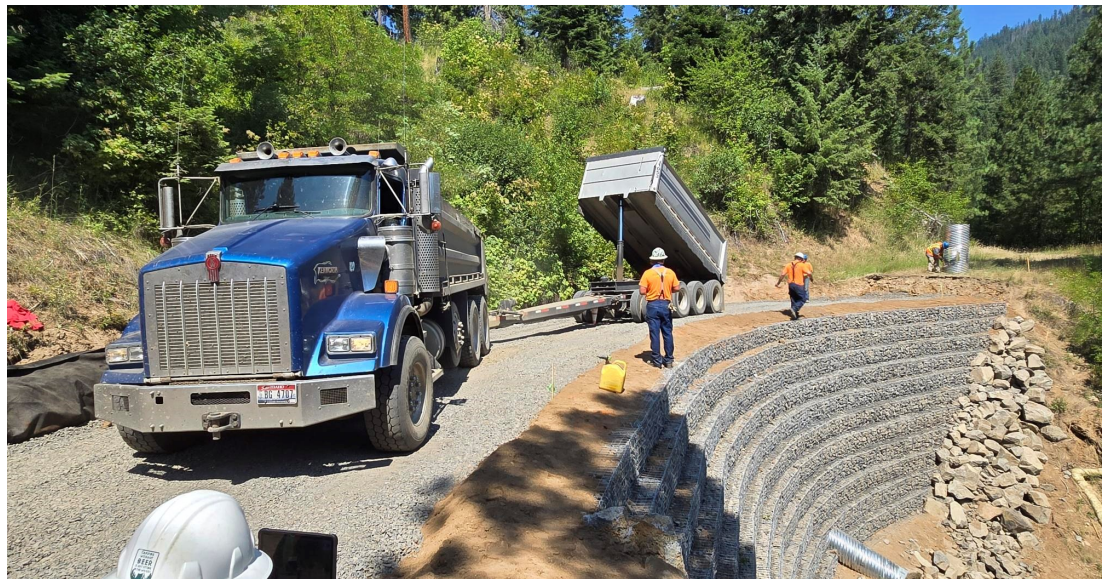
#### Fixed Completion Date:

10/18/2024



U.S. Department  
of Transportation

**Federal Highway  
Administration**



Roadway Aggregate Surface Course placement at FSR5503

Source: FHWA



# SITE PHOTOS



Riser Inlet installation, FSR5503

Source: FHWA

Finishing touches on FSR5530

Source: FHWA



Completed Gabion face wall and roadway FSR 5503 M.P. 1.28

SOURCE: FHWA