



TEXAS

HIGHWAY SAFETY IMPROVEMENT PROGRAM 2023 ANNUAL REPORT



Disclaimer: This report is the property of the State Department of Transportation (State DOT). The State DOT completes the report by entering applicable information into the Federal Highway Administration's (FHWA) Highway Safety Improvement Program (HSIP) online reporting tool. Once the State DOT completes the report pertaining to its State, it coordinates with its respective FHWA Division Office to ensure the report meets all legislative and regulatory requirements. FHWA's Headquarters Office of Safety then downloads the State's finalized report and posts it to the website (<https://highways.dot.gov/safety/hsip/reporting>) as required by law (23 U.S.C. 148(h)(3)(A)).

Photo source: Federal Highway Administration

Table of Contents

Disclaimer 3
 Protection of Data from Discovery Admission into Evidence 3
Executive Summary 4
Introduction 5
Program Structure..... 5
 Program Administration 5
 Program Methodology 8
Project Implementation 14
 Funds Programmed..... 14
 General Listing of Projects 16
Safety Performance 56
 General Highway Safety Trends..... 56
 Safety Performance Targets..... 61
 Applicability of Special Rules..... 64
Evaluation 65
 Program Effectiveness 65
 Effectiveness of Groupings or Similar Types of Improvements 65
 Project Effectiveness 69
Compliance Assessment..... 70
Optional Attachments..... 74
Glossary..... 75

Disclaimer

Protection of Data from Discovery Admission into Evidence

23 U.S.C. 148(h)(4) states “Notwithstanding any other provision of law, reports, surveys, schedules, lists, or data compiled or collected for any purpose relating to this section[HSIP], shall not be subject to discovery or admitted into evidence in a Federal or State court proceeding or considered for other purposes in any action for damages arising from any occurrence at a location identified or addressed in the reports, surveys, schedules, lists, or other data.”

23 U.S.C. 407 states “Notwithstanding any other provision of law, reports, surveys, schedules, lists, or data compiled or collected for the purpose of identifying, evaluating, or planning the safety enhancement of potential accident sites, hazardous roadway conditions, or railway-highway crossings, pursuant to sections 130, 144, and 148 of this title or for the purpose of developing any highway safety construction improvement project which may be implemented utilizing Federal-aid highway funds shall not be subject to discovery or admitted into evidence in a Federal or State court proceeding or considered for other purposes in any action for damages arising from any occurrence at a location mentioned or addressed in such reports, surveys, schedules, lists, or data.”

Executive Summary

During the 2023 State Fiscal Year, TxDOT let 497 projects totaling approximately \$544M through the HSIP, and another 5 projects for \$20M through our State Systemic Widening effort. This is in addition to the systemic and hot spot safety improvements that are incorporated into every construction or maintenance project, a focus of our Design and Construction divisions. This significant increase in HSIP letting was a result of the Rack 'em & Stack 'em efforts of TxDOT's leadership, accelerating Safety projects from future years' programming to use each month's maximum letting capacity.

FY2023 saw several changes at TxDOT. We've added new perspectives with a new Deputy Division Director, new Traffic Engineering Section Director, and new Lead Engineer, who come from both the district level and private sector. As a result, TxDOT's Traffic Safety Division (TRF) is continuing to make improvements in our coordination with other internal divisions, like Design Division, to bring our policies and timelines into better alignment with the Unified Transportation Plan, and pursue research opportunities related to new safety countermeasures as well as reviewing our existing safety scoring systems.

We continue to see the benefit of our 2020 effort to eliminate the competitive element from our project selection process. District partners now have clear expectations of how much they are expected to let through our program, a dashboard showing their existing and expected program amounts, and better visibility into their crash data through our Crash Data and Analysis (CDA) section's Tableau dashboards.

The Safety Engineering team works closely with District engineering and planning teams to coordinate letting dates, provide crash data, and evaluate project submissions, as well as with our finance division to meet targets like our VRU minimum letting amount. The staff is also available to answer questions for Federal, state, and local & regional partners.

HSIP projects provide both targeted and systemic engineering solutions to crashes related to the Emphasis Areas in the 2022 SHSP. The plan lists eight emphasis areas which have the greatest potential for reducing fatalities and injuries – we're continuing to focus on roadway and lane departures, speed related, intersection safety, occupant protection, impaired driving, and distracted driving, and we have identified numerous opportunities to improve safety for vulnerable road users and post-crash care efforts.

TxDOT remains committed to our stated Road to Zero goals – zero fatalities on our roadways by 2050, and reduced 50% by 2035.

Introduction

The Highway Safety Improvement Program (HSIP) is a core Federal-aid program with the purpose of achieving a significant reduction in fatalities and serious injuries on all public roads. As per 23 U.S.C. 148(h) and 23 CFR 924.15, States are required to report annually on the progress being made to advance HSIP implementation and evaluation efforts. The format of this report is consistent with the HSIP Reporting Guidance dated December 29, 2016 and consists of five sections: program structure, progress in implementing highway safety improvement projects, progress in achieving safety outcomes and performance targets, effectiveness of the improvements and compliance assessment.

Program Structure

Program Administration

Describe the general structure of the HSIP in the State.

The HSIP is administered by the Texas Department of Transportation, Traffic Safety Division (TRF). The safety engineering branch of Traffic Engineering within TRF issues a statewide program call for highway safety projects to all 25 TxDOT districts, who share that program call with their local partners. Projects funded in the HSIP are limited to improvements that address the serious crash types identified in the most current SHSP.

These projects may range from spot-safety improvements and upgrading of existing conditions to new roadway construction. Typically, highway safety projects are small in scope, low in cost, and can be let to contract within 3-4 years.

When a call for projects is issued, TRF provides each district with both on- and off-system crash data that can be used to identify potential project locations and to develop project proposals. District personnel work with area offices, local governments, tribal entities, and MPO's to determine appropriate countermeasures and timeframe, then districts submit all project proposals to TRF.

All eligible proposals are subjected to a benefit/cost analysis. The formula currently used for this purpose is the Safety Improvement Index (SII).

In its most basic form, the SII is the ratio of the annual savings in preventable crash costs that have occurred at a location to the cost of constructing the proposed improvement. The SII incorporates adjustments to provide additional benefit for:

- Locations experiencing increasing traffic over the project life,
- Improvements that will reduce maintenance cost, and,
- Projects expected to have long service lives over which construction costs can be amortized.

Beginning with state fiscal year 2022, the new HSIP process removed statewide prioritization in favor of district expertise. Each district determines their top priority safety projects based on district crash data, benefit/cost (SII), or systemic projects applicable to their top focus emphasis areas. The Traffic Safety Division supports this effort with extensive crash data analysis tools.

Where is HSIP staff located within the State DOT?

Operations

How are HSIP funds allocated in a State?

- Formula via Districts/Regions

Describe how local and tribal roads are addressed as part of HSIP.

TxDOT offices notify stakeholders in their districts when a call for project proposals has been issued. Local and tribal entities submit their proposals to their TxDOT district office for submission to TRF-TE-Safety. Local and tribal roads are evaluated separately from on-system proposals but using the same rules, guidelines, and requirements. TxDOT has set aside approximately 10% of HSIP funding for the improvement of local road safety.

Identify which internal partners (e.g., State departments of transportation (DOTs) Bureaus, Divisions) are involved with HSIP planning.

- Design
- Districts/Regions
- Operations
- Planning
- Traffic Engineering/Safety

Describe coordination with internal partners.

TRF (Traffic Engineering/Safety)

- Using the most current Strategic Highway Safety Plan (SHSP), the Safety Engineering team identifies program safety emphasis areas, scopes of work to be funded through that call, and applicable ranking measures for each scope of work.
- The Safety Engineering team provides crash data, particularly hot spots and emphasis area trends, and funding guidance to the district HSIP teams.

District (Design/Operations):

- Weighs crash data, historic areas of complaint, maintenance histories, and local pressures, then select projects to submit to TRF for consensus. Districts also evaluate whether projects are feasible and to verify that appropriate countermeasures addressing the location's safety needs have not already been implemented or scheduled for construction.
- Works with area offices and local governments to gather additional location information and to identify any potential locations that may have been excluded due to incomplete or inaccurate crash and/or roadway data.
- Completes and submits projects containing requested data to the Texas Department of Transportation (TxDOT) Traffic Safety Division (TRF) along with necessary backup data (typical sections, layouts, detailed estimates, etc.) in response to the program call.
- Prior to submission, the district teams should conduct a current field evaluation to determine the appropriate countermeasures and develop a detailed estimate.

TRF (Traffic Engineering/Safety):

- Analyzes the proposed highway safety projects for HSIP eligibility, data accuracy, and conformance to design standards.
- Meets with each district to review the list of projects

2023 Texas Highway Safety Improvement Program

- Analyzes each eligible project's Safety Improvement Index (SII), if applicable.
- Sends a listing of highway safety projects selected for funding in the HSIP to the districts.

District (Planning):

- Sets projects up in TxDOTCONNECT and coordinates with quarterly planning meetings, letting management, and other district partners as needed.

District (Design/Operations):

- Notifies TRF of an overrun of an HSIP project's authorized funds prior to Plans, Specifications, and Estimate (PS&E) submittal.
- Submits PS&E for HSIP projects to TRF in accordance with standard PS&E submission schedule.

TRF (Traffic Engineering/Safety)

- Handles overruns of project authorized funds at the divisional PS&E review stage in accordance with the current TxDOT policy.
- Tracks projects through to letting and addresses changes in cost, scope, and schedule are addressed prior to award whenever possible.

Identify which external partners are involved with HSIP planning.

- Academia/University
- FHWA
- Local Government Agency
- Regional Planning Organizations (e.g. MPOs, RPOs, COGs)

Describe coordination with external partners.

TxDOT offices notify stakeholders such as Local Government Agencies, MPOs, COGs, and other interested organizations in their districts when a call for project proposals has been issued. The district evaluates local submissions and provides advice regarding the eligibility and viability of safety projects suggested by the local municipality. The district submits all local proposals that meet the requirements of the HSIP and are considered safety projects by the district to TRF for funding consideration.

District personnel also work with these local stakeholders to identify problem locations, share information, and build relationships with an eye toward future safety improvements.

TxDOT contracts with the Texas Transportation Institute at Texas A&M University to provide crash analysis & visualization data (CAVs), as well as assistance determining the effectiveness of countermeasures for inclusion in the HSIP.

As always, TxDOT also makes every effort to keep our state FHWA coordinator informed of our efforts. The department has received outstanding support throughout the years through peer exchanges, research guidance, and maintaining a chain of continuity that supports improving highway safety in Texas.

Describe HSIP program administration practices that have changed since the last reporting period.

TxDOT strives to program as far in advance as practicable in order to maximize certainty for our stakeholders. To that end, we are now programming out our Statewide Systemic set-aside up to 3 fiscal years in advance. This should allow the districts better opportunity to build projects of greater scope or length, and coordinate with maintenance, paving, and other TxDOT processes.

Program Methodology

Does the State have an HSIP manual or similar that clearly describes HSIP planning, implementation and evaluation processes?

Yes

Select the programs that are administered under the HSIP.

- Local Safety
- Median Barrier
- Vulnerable Road Users
- Other-Systemic Improvements
- Other-Targeted/Hot Spot Improvements

Program: Local Safety

Date of Program Methodology:9/1/2021

What is the justification for this program?

- Other-Dedicated funding for off-system projects

What is the funding approach for this program?

Funding set-aside

What data types were used in the program methodology?

- | Crashes | Exposure | Roadway |
|--|----------|---|
| <ul style="list-style-type: none">• Other-KAB Crash counts | | <ul style="list-style-type: none">• Other-Ownership |

What project identification methodology was used for this program?

- Probability of specific crash types

Are local roads (non-state owned and operated) included or addressed in this program?

Yes

Are local road projects identified using the same methodology as state roads?

Yes

How are projects under this program advanced for implementation?

- Other-District Prioritization

Select the processes used to prioritize projects for implementation. For the methods selected, indicate the relative importance of each process in project prioritization. Enter either the weights or numerical rankings. If weights are entered, the sum must equal 100. If ranks are entered, indicate ties by giving both processes the same rank and skip the next highest rank (as an example: 1, 2, 2, 4).

Rank of Priority Consideration

Available funding:1

Other-District Prioritization:2

Program: Median Barrier

Date of Program Methodology:9/1/2022

What is the justification for this program?

- Addresses SHSP priority or emphasis area

What is the funding approach for this program?

Funding set-aside

What data types were used in the program methodology?

Crashes

Exposure

Roadway

- Other-KAB Crash counts

- Median width
- Roadside features

What project identification methodology was used for this program?

- Probability of specific crash types

Are local roads (non-state owned and operated) included or addressed in this program?

No

Are local road projects identified using the same methodology as state roads?

How are projects under this program advanced for implementation?

Select the processes used to prioritize projects for implementation. For the methods selected, indicate the relative importance of each process in project prioritization. Enter either the weights or numerical rankings. If weights are entered, the sum must

equal 100. If ranks are entered, indicate ties by giving both processes the same rank and skip the next highest rank (as an example: 1, 2, 2, 4).

Rank of Priority Consideration

Other-Median Width:2

Other-Roadway type:1

Program: Vulnerable Road Users

Date of Program Methodology:3/1/2023

What is the justification for this program?

- Other-FHWA Special Rule

What is the funding approach for this program?

Funding set-aside

What data types were used in the program methodology?

Crashes

Exposure

Roadway

- Fatal and serious injury crashes only

What project identification methodology was used for this program?

- Probability of specific crash types

Are local roads (non-state owned and operated) included or addressed in this program?

No

Are local road projects identified using the same methodology as state roads?

How are projects under this program advanced for implementation?

- selection committee

Select the processes used to prioritize projects for implementation. For the methods selected, indicate the relative importance of each process in project prioritization. Enter either the weights or numerical rankings. If weights are entered, the sum must equal 100. If ranks are entered, indicate ties by giving both processes the same rank and skip the next highest rank (as an example: 1, 2, 2, 4).

Rank of Priority Consideration

Available funding:1

Program: Other-Systemic Improvements

Date of Program Methodology:9/1/2022

What is the justification for this program?

- Addresses SHSP priority or emphasis area

What is the funding approach for this program?

Funding set-aside

What data types were used in the program methodology?

Crashes	Exposure	Roadway
<ul style="list-style-type: none">• Other-Proven Countermeasures	Safety	<ul style="list-style-type: none">• Roadside features

What project identification methodology was used for this program?

- Probability of specific crash types

Are local roads (non-state owned and operated) included or addressed in this program?

No

Are local road projects identified using the same methodology as state roads?

How are projects under this program advanced for implementation?

- Other-District Prioritization

Select the processes used to prioritize projects for implementation. For the methods selected, indicate the relative importance of each process in project prioritization. Enter either the weights or numerical rankings. If weights are entered, the sum must equal 100. If ranks are entered, indicate ties by giving both processes the same rank and skip the next highest rank (as an example: 1, 2, 2, 4).

Rank of Priority Consideration

Available funding:2

Other-District Prioritization:1

Program: Other-Targeted/Hot Spot Improvements

Date of Program Methodology:9/1/2022

What is the justification for this program?

2023 Texas Highway Safety Improvement Program

- Addresses SHSP priority or emphasis area
- FHWA focused approach to safety

What is the funding approach for this program?

Funding set-aside

What data types were used in the program methodology?

Crashes

Exposure

Roadway

- Other-KAB Crash counts

What project identification methodology was used for this program?

- Other-Safety Improvement Index
- Probability of specific crash types

Are local roads (non-state owned and operated) included or addressed in this program?

No

Are local road projects identified using the same methodology as state roads?

How are projects under this program advanced for implementation?

- Other-District Prioritization

Select the processes used to prioritize projects for implementation. For the methods selected, indicate the relative importance of each process in project prioritization. Enter either the weights or numerical rankings. If weights are entered, the sum must equal 100. If ranks are entered, indicate ties by giving both processes the same rank and skip the next highest rank (as an example: 1, 2, 2, 4).

Rank of Priority Consideration

Available funding:2

Other-District Prioritization:1

What percentage of HSIP funds address systemic improvements?

40

HSIP funds are used to address which of the following systemic improvements?

- Add/Upgrade/Modify/Remove Traffic Signal
- Cable Median Barriers
- Horizontal curve signs
- Install/Improve Lighting

2023 Texas Highway Safety Improvement Program

- Other-Pedestrian Safety Improvements
- Pavement/Shoulder Widening

What process is used to identify potential countermeasures?

- Crash data analysis
- Data-driven safety analysis tools (HSM, CMF Clearinghouse, SafetyAnalyst, usRAP)
- Engineering Study
- SHSP/Local road safety plan
- Stakeholder input

Does the State HSIP consider connected vehicles and ITS technologies?

No

Does the State use the Highway Safety Manual to support HSIP efforts?

Yes

Please describe how the State uses the HSM to support HSIP efforts.

TxDOT implemented Highway Safety Manual (HSM) methods and tools to perform network screening, diagnosis, and countermeasure selection for the Highway Safety Improvement Program (HSIP). With regard to network screening, TxDOT applied the sliding window method to calculate seven HSM performance measures: crash frequency, crash rate, critical rate, excess predicted average crash frequency using method of moments, excess predicted average crash frequency using Safety Performance Functions, probability of specific crash types exceeding threshold proportion, and excess proportion of specific crash types.

Further, TxDOT developed Crash Analysis and Visualization (CAVS) data to enhance the process of selecting safety projects to submit for HSIP funding consideration. Crash data and crash attributes for all Fatal (K) and Suspected Serious Injury (A) crashes statewide were compiled into a spreadsheet. Each HSIP work code was analyzed for each crash to determine whether that crash could be prevented by the type of work. All of the K and A crashes were then mapped in Google Earth. The maps can be filtered to only show crashes that apply to a particular type of work. For example, all crashes that could be prevented with the addition of rumble strips can be mapped to help identify the best place to install the rumble strips. Master plans can also be added to the CAVS data. The master plans include the limits of completed projects, programmed projects and identified projects. The master plans along with the applicable crashes for each work type were displayed on a single map that identifies the projects with the highest potential benefit-cost ratio.

TxDOT Districts use the network screening process to assist in their selection of candidate HSIP projects.

Project Implementation

Funds Programmed

Reporting period for HSIP funding.

State Fiscal Year

The State Fiscal Year for the State of Texas runs 1 September through 31 August annually.

Enter the programmed and obligated funding for each applicable funding category.

FUNDING CATEGORY	PROGRAMMED	OBLIGATED	% OBLIGATED/PROGRAMMED
HSIP (23 U.S.C. 148)	\$403,442,278	\$255,188,335	63.25%
HRRR Special Rule (23 U.S.C. 148(g)(1))	\$0	\$0	0%
VRU Safety Special Rule (23 U.S.C. 148(g)(3))	\$41,855,569	\$46,118,374	110.18%
Penalty Funds (23 U.S.C. 154)	\$0	\$0	0%
Penalty Funds (23 U.S.C. 164)	\$0	\$0	0%
RHCP (for HSIP purposes) (23 U.S.C. 130(e)(2))	\$0	\$0	0%
Other Federal-aid Funds (i.e. STBG, NHPP)	\$0	\$0	0%
State and Local Funds	\$0	\$30,130,671	0%
Totals	\$445,297,847	\$331,437,380	74.43%

How much funding is programmed to local (non-state owned and operated) or tribal safety projects?

\$30,962,667

How much funding is obligated to local or tribal safety projects?

\$35,710,168

How much funding is programmed to non-infrastructure safety projects?

\$5,000,000

How much funding is obligated to non-infrastructure safety projects?

\$5,000,000

2023 Texas Highway Safety Improvement Program

The Texas Department of Transportation Communications Management Division requested and received the amount of \$5M from the HSIP in order to design and launch a Safety Management Campaign.

How much funding was transferred in to the HSIP from other core program areas during the reporting period under 23 U.S.C. 126?

\$0

How much funding was transferred out of the HSIP to other core program areas during the reporting period under 23 U.S.C. 126?

\$0

Discuss impediments to obligating HSIP funds and plans to overcome this challenge in the future.

We do not have any impediments to obligating our HSIP funds at this time. Our Administration is supportive of the program and provides us with appropriate obligation authority.

General Listing of Projects

List the projects obligated using HSIP funds for the reporting period.

PROJECT NAME	IMPROVEMENT CATEGORY	SUBCATEGORY	OUTPUTS	OUTPUT TYPE	HSIP PROJECT COST(\$)	TOTAL PROJECT COST(\$)	FUNDING CATEGORY	LAND USE/AREA TYPE	FUNCTIONAL CLASSIFICATION	AADT	SPEED	OWNERSHIP	METHOD FOR SITE SELECTION	SHSP EMPHASIS AREA	SHSP STRATEGY
2018H14009S-AUS	Intersection geometry	Add/modify auxiliary lanes	3.153	Miles	\$11806779	\$22961261	HSIP (23 U.S.C. 148)	Multiple/Varies	Multiple/Varies	0		State Highway Agency	Spot	Roadway Departure	
2020-2-ABL_FM2599	Shoulder treatments	Pave existing shoulders	4.4	Miles	\$3552789	\$3567789	HSIP (23 U.S.C. 148)	Multiple/Varies	Multiple/Varies	0		State Highway Agency	Systemic	Roadway Departure	
2020-2-ABL_FM0669_1	Roadway signs and traffic control	Curve-related warning signs and flashers	1.561	Miles	\$864472	\$864472	HSIP (23 U.S.C. 148)	Multiple/Varies	Multiple/Varies	0		State Highway Agency	Spot	Roadway Departure	
SFT, SS172, N of US 190F	Lighting	Continuous roadway lighting	0.465	Miles	\$625499	\$660499	HSIP (23 U.S.C. 148)	Multiple/Varies	Multiple/Varies	0		State Highway Agency	Spot	Roadway Departure	
2020-2-ABL_FM0669_2	Roadway signs and traffic control	Curve-related warning signs and flashers	1.53	Miles	\$838791	\$838791	HSIP (23 U.S.C. 148)	Multiple/Varies	Multiple/Varies	0		State Highway Agency	Spot	Roadway Departure	
2020-2-ABI_N10ST_Abilene	Roadway signs and traffic control	Curve-related warning signs and flashers	0.25	Miles	\$103567	\$125569	HSIP (23 U.S.C. 148)	Multiple/Varies	Multiple/Varies	0		Other Local Agency	Spot	Roadway Departure	
2020-2-ABL_RebeccaLn_Abilene	Roadway signs and traffic control	Curve-related warning signs and flashers	0.176	Miles	\$84484	\$94484	HSIP (23 U.S.C. 148)	Multiple/Varies	Multiple/Varies	0		Other Local Agency	Spot	Roadway Departure	
2020-2-AMA_FM809	Intersection traffic control	Modify traffic signal –other	0.2	Miles	\$404030	\$410030	HSIP (23 U.S.C. 148)	Multiple/Varies	Multiple/Varies	0		State Highway Agency	Spot	Intersections	
2020-2-AMA_US0060_4	Intersection geometry	Add/modify auxiliary lanes	7.2	Miles	\$2207755	\$2213755	HSIP (23 U.S.C. 148)	Multiple/Varies	Multiple/Varies	0		State Highway Agency	Systemic	Intersections	
2020-2-AMA_OFF SYSTEM_AMARILLO_2	Intersection traffic control	Modify traffic signal –other	5	Intersections	\$482911	\$577036	HSIP (23 U.S.C. 148)	Multiple/Varies	Multiple/Varies	0		Other Local Agency	Systemic	Intersections	
2020-2-ATL_FM0251	Lighting	Intersection lighting	1	Miles	\$77634	\$80434	HSIP (23 U.S.C. 148)	Multiple/Varies	Multiple/Varies	0		State Highway Agency	Systemic	Intersections	
2020-2-ATL_FM1399	Lighting	Intersection lighting	1	Miles	\$77258	\$80058	HSIP (23 U.S.C. 148)	Multiple/Varies	Multiple/Varies	0		State Highway Agency	Systemic	Intersections	

2023 Texas Highway Safety Improvement Program

PROJECT NAME	IMPROVEMENT CATEGORY	SUBCATEGORY	OUTPUTS	OUTPUT TYPE	HSIP PROJECT COST(\$)	TOTAL PROJECT COST(\$)	FUNDING CATEGORY	LAND USE/AREA TYPE	FUNCTIONAL CLASSIFICATION	AADT	SPEED	OWNERSHIP	METHOD FOR SITE SELECTION	SHSP EMPHASIS AREA	SHSP STRATEGY
2020-2-ATL_FM2791	Lighting	Intersection lighting	1	Miles	\$74359	\$77159	HSIP (23 U.S.C. 148)	Multiple/Varies	Multiple/Varies	0		State Highway Agency	Systemic	Intersections	
2020-2-ATL_SH0011_2	Roadside	Barrier - other	2.749	Miles	\$435419	\$435419	HSIP (23 U.S.C. 148)	Multiple/Varies	Multiple/Varies	0		State Highway Agency	Systemic	Roadway Departure	
2020-2-ATL_SH0043	Lighting	Intersection lighting	1	Miles	\$99792	\$102592	HSIP (23 U.S.C. 148)	Multiple/Varies	Multiple/Varies	0		State Highway Agency	Systemic	Intersections	
2020-2-ATL_SH0077	Lighting	Intersection lighting	1	Miles	\$128539	\$134139	HSIP (23 U.S.C. 148)	Multiple/Varies	Multiple/Varies	0		State Highway Agency	Systemic	Intersections	
2020-2-ATL_SH0154	Roadside	Roadside other	13.208	Miles	\$2097780	\$2105780	HSIP (23 U.S.C. 148)	Multiple/Varies	Multiple/Varies	0		State Highway Agency	Spot	Roadway Departure	
2020-2-ATL_US0067	Lighting	Intersection lighting	1	Miles	\$81934	\$83334	HSIP (23 U.S.C. 148)	Multiple/Varies	Multiple/Varies	0		State Highway Agency	Systemic	Intersections	
2020-2-ATL_US0067_1	Lighting	Intersection lighting	1	Miles	\$87189	\$88589	HSIP (23 U.S.C. 148)	Multiple/Varies	Multiple/Varies	0		State Highway Agency	Systemic	Intersections	
2020-2-ATL_US0067_2	Lighting	Intersection lighting	1	Miles	\$228527	\$243427	HSIP (23 U.S.C. 148)	Multiple/Varies	Multiple/Varies	0		State Highway Agency	Systemic	Intersections	
2020-2-ATL_US0080	Roadside	Barrier - other	5.505	Miles	\$1144740	\$1157740	HSIP (23 U.S.C. 148)	Multiple/Varies	Multiple/Varies	0		State Highway Agency	Systemic	Roadway Departure	
2021 - LRD - Monroe	Intersection traffic control	Modify traffic signal -other	0.2	Miles	\$163093	\$163093	HSIP (23 U.S.C. 148)	Multiple/Varies	Multiple/Varies	0		State Highway Agency	Spot	Intersections	
2020-2-ATL_US0259_1	Lighting	Intersection lighting	1	Miles	\$96995	\$99795	HSIP (23 U.S.C. 148)	Multiple/Varies	Multiple/Varies	0		State Highway Agency	Systemic	Intersections	
2020-2-AUS_FM1100	Roadway delineation	Roadway delineation - other	0.75	Miles	\$2109544	\$2109544	HSIP (23 U.S.C. 148)	Multiple/Varies	Multiple/Varies	0		State Highway Agency	Spot	Roadway Departure	
2020-2-AUS_FM2770	Roadway	Roadway widening - travel lanes	0.5	Miles	\$1394024	\$1423024	HSIP (23 U.S.C. 148)	Multiple/Varies	Multiple/Varies	0		State Highway Agency	Spot	Intersections	

2023 Texas Highway Safety Improvement Program

PROJECT NAME	IMPROVEMENT CATEGORY	SUBCATEGORY	OUTPUTS	OUTPUT TYPE	HSIP PROJECT COST(\$)	TOTAL PROJECT COST(\$)	FUNDING CATEGORY	LAND USE/AREA TYPE	FUNCTIONAL CLASSIFICATION	AADT	SPEED	OWNERSHIP	METHOD FOR SITE SELECTION	SHSP EMPHASIS AREA	SHSP STRATEGY
2020-2-AUS_FM3177	Shoulder treatments	Widen shoulder – paved or other (includes add shoulder)	0.568	Miles	\$2361951	\$2408951	HSIP (23 U.S.C. 148)	Multiple/Varies	Multiple/Varies	0		State Highway Agency	Systemic	Intersections	
2020-2-AUS_FM0812_2	Intersection traffic control	Modify control – new traffic signal	0.2	Miles	\$375659	\$400659	HSIP (23 U.S.C. 148)	Multiple/Varies	Multiple/Varies	0		State Highway Agency	Spot	Intersections	
2020-2-AUS_RM1869	Shoulder treatments	Widen shoulder – paved or other (includes add shoulder)	1.526	Miles	\$3631474	\$3779474	VRU Safety Special Rule (23 U.S.C. 148(g)(3))	Multiple/Varies	Multiple/Varies	0		State Highway Agency	Spot	Roadway Departure	
2020-2-AUS_SH0123	Intersection geometry	Add/modify auxiliary lanes	0.5	Miles	\$2006423	\$2110423	HSIP (23 U.S.C. 148)	Multiple/Varies	Multiple/Varies	0		State Highway Agency	Spot	Intersections	
2020-2-AUS_SH0021	Roadway	Roadway widening - travel lanes	0.309	Miles	\$676497	\$736497	HSIP (23 U.S.C. 148)	Multiple/Varies	Multiple/Varies	0		State Highway Agency	Systemic	Intersections	
2020-2-AUS_SH0071_2.dgn	Intersection geometry	Add/modify auxiliary lanes	0.2	Miles	\$432318	\$432318	HSIP (23 U.S.C. 148)	Multiple/Varies	Multiple/Varies	0		State Highway Agency	Spot	Intersections	
Illinois Ave at Ewing Ave	Intersection traffic control	Modify traffic signal –other	1	Intersections	\$303274	\$391192	HSIP (23 U.S.C. 148)	Multiple/Varies	Multiple/Varies	0		Other Local Agency	Spot	Intersections	
2020-2-AUS_US0281_3.pdf	Roadway signs and traffic control	Roadway signs (including post) - new or updated	0.695	Miles	\$221866	\$221866	HSIP (23 U.S.C. 148)	Multiple/Varies	Multiple/Varies	0		State Highway Agency	Spot	Roadway Departure	
2020-2-AUS_ChandlerRd_Williamson	Roadway delineation	Roadway delineation - other	8.4	Miles	\$96976	\$108276	HSIP (23 U.S.C. 148)	Multiple/Varies	Multiple/Varies	0		Other Local Agency	Spot	Roadway Departure	
2020-2-AUS_HowardLn_Austin	Lighting	Continuous roadway lighting	3.12	Miles	\$1168233	\$1221915	HSIP (23 U.S.C. 148)	Multiple/Varies	Multiple/Varies	0		Other Local Agency	Spot	Roadway Departure	
2020-2-AUS_SlaughterLn_Austin	Lighting	Continuous roadway lighting	2	Miles	\$1042940	\$1126388	HSIP (23 U.S.C. 148)	Multiple/Varies	Multiple/Varies	0		Other Local Agency	Spot	Roadway Departure	
2020-2-BMT_FM0365_1	Intersection traffic control	Modify traffic signal –other	0.2	Miles	\$320759	\$322759	HSIP (23 U.S.C. 148)	Multiple/Varies	Multiple/Varies	0		State Highway Agency	Spot	Intersections	

2023 Texas Highway Safety Improvement Program

PROJECT NAME	IMPROVEMENT CATEGORY	SUBCATEGORY	OUTPUTS	OUTPUT TYPE	HSIP PROJECT COST(\$)	TOTAL PROJECT COST(\$)	FUNDING CATEGORY	LAND USE/AREA TYPE	FUNCTIONAL CLASSIFICATION	AADT	SPEED	OWNERSHIP	METHOD FOR SITE SELECTION	SHSP EMPHASIS AREA	SHSP STRATEGY
2020-2-BMT_FM0834_1	Shoulder treatments	Widen shoulder – paved or other (includes add shoulder)	6.019	Miles	\$4870508	\$4910508	HSIP (23 U.S.C. 148)	Multiple/Varies	Multiple/Varies	0		State Highway Agency	Spot	Roadway Departure	
2020-2-BMT_FM0408_1.pdf	Shoulder treatments	Widen shoulder – paved or other (includes add shoulder)	3.166	Miles	\$4993301	\$5013301	VRU Safety Special Rule (23 U.S.C. 148(g)(3))	Multiple/Varies	Multiple/Varies	0		State Highway Agency	Spot	Roadway Departure	
2020-2-BMT_SH0082_1	Shoulder treatments	Widen shoulder – paved or other (includes add shoulder)	7.465	Miles	\$6193764	\$6199764	HSIP (23 U.S.C. 148)	Multiple/Varies	Multiple/Varies	0		State Highway Agency	Systemic	Roadway Departure	
2020-2-BMT_US0069_1	Intersection traffic control	Modify traffic signal timing – signal coordination	3.377	Miles	\$250000	\$252000	HSIP (23 U.S.C. 148)	Multiple/Varies	Multiple/Varies	0		State Highway Agency	Spot	Intersections	
2020-2-BMT_Calder_1	Intersection traffic control	Modify traffic signal timing – signal coordination	2	Miles	\$373555	\$375555	HSIP (23 U.S.C. 148)	Multiple/Varies	Multiple/Varies	0		Other Local Agency	Spot	Intersections	
SH 153 SUPER 2 NOLAN CO SH FROM SH 70 S	Roadway	Install / remove / modify passing zone	2.394	Miles	\$3647332	\$3647332	HSIP (23 U.S.C. 148)	Multiple/Varies	Multiple/Varies	0		State Highway Agency	Spot	Roadway Departure	
DISTRICT CROSSOVER SIGNAGE	Roadway signs and traffic control	Roadway signs and traffic control - other	7	Locations	\$316290	\$322790	HSIP (23 U.S.C. 148)	Multiple/Varies	Multiple/Varies	0		State Highway Agency	Systemic	Older Drivers	
2023 HSIP IH 40 1 - 1/3, 2023 HSIP IH 40 1 - 2/3	Lighting	Continuous roadway lighting	1.408	Miles	\$1626531	\$1645531	HSIP (23 U.S.C. 148)	Multiple/Varies	Multiple/Varies	0		State Highway Agency	Spot	Roadway Departure	
2023 HSIP IH 40 1 - 3/3	Lighting	Continuous roadway lighting	1.484	Miles	\$1476440	\$1476440	HSIP (23 U.S.C. 148)	Multiple/Varies	Multiple/Varies	0		State Highway Agency	Spot	Roadway Departure	
2020-2-BMT_Lucas_1	Intersection traffic control	Modify traffic signal timing – signal coordination	1	Miles	\$181225	\$181225	HSIP (23 U.S.C. 148)	Multiple/Varies	Multiple/Varies	0		Other Local Agency	Spot	Intersections	

2023 Texas Highway Safety Improvement Program

PROJECT NAME	IMPROVEMENT CATEGORY	SUBCATEGORY	OUTPUTS	OUTPUT TYPE	HSIP PROJECT COST(\$)	TOTAL PROJECT COST(\$)	FUNDING CATEGORY	LAND USE/AREA TYPE	FUNCTIONAL CLASSIFICATION	AADT	SPEED	OWNERSHIP	METHOD FOR SITE SELECTION	SHSP EMPHASIS AREA	SHSP STRATEGY
2020-2-BMT_Washington_2	Intersection traffic control	Modify traffic signal timing – signal coordination	1.5	Miles	\$362450	\$362450	HSIP (23 U.S.C. 148)	Multiple/Varies	Multiple/Varies	0		Other Local Agency	Spot	Intersections	
2020-2-BRY_FM0149_01	Shoulder treatments	Widen shoulder – paved or other (includes add shoulder)	5.424	Miles	\$4951396	\$4971396	HSIP (23 U.S.C. 148)	Multiple/Varies	Multiple/Varies	0		State Highway Agency	Spot	Roadway Departure	
2020-2-BRY_SH0006_01	Intersection geometry	Add/modify auxiliary lanes	0.4	Miles	\$620874	\$620874	HSIP (23 U.S.C. 148)	Multiple/Varies	Multiple/Varies	0		State Highway Agency	Spot	Roadway Departure	
2020-2-BRY_SH0021_03	Roadway	Roadway widening - travel lanes	0.467	Miles	\$1821881	\$1821881	HSIP (23 U.S.C. 148)	Multiple/Varies	Multiple/Varies	0		State Highway Agency	Spot	Intersections	
2020-2-BRY_SH0105_02	Intersection traffic control	Modify traffic signal –other	0.4	Miles	\$825360	\$836360	HSIP (23 U.S.C. 148)	Multiple/Varies	Multiple/Varies	0		State Highway Agency	Systemic	Intersections	
2020-2-BRY_US0079_05	Intersection geometry	Add/modify auxiliary lanes	1	Miles	\$1783160	\$1783160	HSIP (23 U.S.C. 148)	Multiple/Varies	Multiple/Varies	0		State Highway Agency	Spot	Intersections	
2020-2-BRY_US0079_09	Intersection traffic control	Modify traffic signal –other	0.4	Miles	\$677190	\$687190	HSIP (23 U.S.C. 148)	Multiple/Varies	Multiple/Varies	0		State Highway Agency	Spot	Intersections	
2023 HSIP IH 40 SAFETY LIGHTING	Lighting	Continuous roadway lighting	1	Locations	\$1957418	\$1989418	VRU Safety Special Rule (23 U.S.C. 148(g)(3))	Multiple/Varies	Multiple/Varies	0		State Highway Agency	Systemic	Roadway Departure	
SH 154 from FM 726 S to Upshur C/L	Roadside	Roadside - other	1	Locations	\$1394643	\$1394643	HSIP (23 U.S.C. 148)	Multiple/Varies	Multiple/Varies	0		State Highway Agency	Spot	Roadway Departure	
2020-2-BRY_US0190_07	Intersection geometry	Add/modify auxiliary lanes	0.7	Miles	\$1786875	\$1786875	HSIP (23 U.S.C. 148)	Multiple/Varies	Multiple/Varies	0		State Highway Agency	Systemic	Intersections	
IH 30 at FM 560	Lighting	Intersection lighting	1	Intersections	\$276770	\$276770	HSIP (23 U.S.C. 148)	Multiple/Varies	Multiple/Varies	0		State Highway Agency	Systemic	Intersections	
IH 30 at SP 86	Lighting	Intersection lighting	1	Intersections	\$168832	\$168832	HSIP (23 U.S.C. 148)	Multiple/Varies	Multiple/Varies	0		State Highway Agency	Systemic	Intersections	

2023 Texas Highway Safety Improvement Program

PROJECT NAME	IMPROVEMENT CATEGORY	SUBCATEGORY	OUTPUTS	OUTPUT TYPE	HSIP PROJECT COST(\$)	TOTAL PROJECT COST(\$)	FUNDING CATEGORY	LAND USE/AREA TYPE	FUNCTIONAL CLASSIFICATION	AADT	SPEED	OWNERSHIP	METHOD FOR SITE SELECTION	SHSP EMPHASIS AREA	SHSP STRATEGY
FM 559 at Galleria Oaks	Intersection traffic control	Modify control – new traffic signal	1	Miles	\$225790	\$254140	HSIP (23 U.S.C. 148)	Multiple/Varies	Multiple/Varies	0		State Highway Agency	Spot	Intersections	
RM 1431 - 1 - 1/1	Roadway	Roadway widening - travel lanes	1	Locations	\$5205669	\$5287669	HSIP (23 U.S.C. 148)	Multiple/Varies	Multiple/Varies	0		State Highway Agency	Spot	Intersections	
2021 - ATL - US 271	Roadside	Barrier - other	1.704	Miles	\$282823	\$282823	HSIP (23 U.S.C. 148)	Multiple/Varies	Multiple/Varies	0		State Highway Agency	Systemic	Roadway Departure	
2020-2-BWD_FM2309.PDF	Intersection traffic control	Modify traffic signal –other	0.033	Miles	\$495145	\$495145	HSIP (23 U.S.C. 148)	Multiple/Varies	Multiple/Varies	0		State Highway Agency	Spot	Intersections	
2020-2-BWD_US0084_02.pdf	Intersection traffic control	Intersection signing – add basic advance warning	0	Miles	\$128110	\$157033	HSIP (23 U.S.C. 148)	Multiple/Varies	Multiple/Varies	0		State Highway Agency	Systemic	Intersections	
2020-2-BWD_US0084_03.pdf	Shoulder treatments	Widen shoulder – paved or other (includes add shoulder)	0	Miles	\$2976495	\$3027276	HSIP (23 U.S.C. 148)	Multiple/Varies	Multiple/Varies	0		State Highway Agency	Systemic	Intersections	
2020-2-BWD_US0084_04.pdf	Intersection traffic control	Modify traffic signal –other	0.59	Miles	\$168612	\$181612	HSIP (23 U.S.C. 148)	Multiple/Varies	Multiple/Varies	0		State Highway Agency	Spot	Intersections	
2020-2-CHS_FM0267	Roadway delineation	Roadway delineation - other	10.747	Miles	\$6913833	\$7119196	HSIP (23 U.S.C. 148)	Multiple/Varies	Multiple/Varies	0		State Highway Agency	Systemic	Roadway Departure	
2020-2-CRP_BU0077T_1	Roadside	Roadside other	0.403	Miles	\$279198	\$279198	HSIP (23 U.S.C. 148)	Multiple/Varies	Multiple/Varies	0		State Highway Agency	Spot	Roadway Departure	
2020-2-CRP_FM0070_1	Roadside	Roadside other	7.49	Miles	\$701243	\$701243	HSIP (23 U.S.C. 148)	Multiple/Varies	Multiple/Varies	0		State Highway Agency	Spot	Roadway Departure	
2020-2-CRP_FM0743_1	Shoulder treatments	Pave existing shoulders	3.887	Miles	\$2555559	\$2561559	HSIP (23 U.S.C. 148)	Multiple/Varies	Multiple/Varies	0		State Highway Agency	Systemic	Roadway Departure	
2020-2-CRP_SH0286_2	Advanced technology and ITS	Wrong-way Driving Detection System	7.967	Miles	\$536944	\$547944	HSIP (23 U.S.C. 148)	Multiple/Varies	Multiple/Varies	0		State Highway Agency	Spot	Older Drivers	

2023 Texas Highway Safety Improvement Program

PROJECT NAME	IMPROVEMENT CATEGORY	SUBCATEGORY	OUTPUTS	OUTPUT TYPE	HSIP PROJECT COST(\$)	TOTAL PROJECT COST(\$)	FUNDING CATEGORY	LAND USE/AREA TYPE	FUNCTIONAL CLASSIFICATION	AADT	SPEED	OWNERSHIP	METHOD FOR SITE SELECTION	SHSP EMPHASIS AREA	SHSP STRATEGY
2020-2-CRP_SH0359_1	Intersection traffic control	Modify traffic signal –other	1	Miles	\$76213	\$76213	HSIP (23 U.S.C. 148)	Multiple/Varies	Multiple/Varies	0		State Highway Agency	Spot	Intersections	
2020-2-CRP_UA0281_1	Intersection traffic control	Modify traffic signal –other	1	Miles	\$71944	\$80944	HSIP (23 U.S.C. 148)	Multiple/Varies	Multiple/Varies	0		State Highway Agency	Spot	Intersections	
2020-2-CRP_US0181_5	Roadside	Barrier - other	2.273	Miles	\$460101	\$471101	HSIP (23 U.S.C. 148)	Multiple/Varies	Multiple/Varies	0		State Highway Agency	Systemic	Roadway Departure	
SH 6 at FM 2549 - Illumination FY 23	Lighting	Intersection lighting	1	Intersections	\$85485	\$85485	HSIP (23 U.S.C. 148)	Multiple/Varies	Multiple/Varies	0		State Highway Agency	Systemic	Intersections	
US 84 At SPUR 113 - Illumination FY 23	Lighting	Intersection lighting	1	Intersections	\$51260	\$51260	HSIP (23 U.S.C. 148)	Multiple/Varies	Multiple/Varies	0		State Highway Agency	Systemic	Intersections	
US 290 at Rancho de Pancho Ln - FY 23	Roadway signs and traffic control	Curve-related warning signs and flashers	0.6	Miles	\$20842	\$20842	HSIP (23 U.S.C. 148)	Multiple/Varies	Multiple/Varies	0		State Highway Agency	Spot	Roadway Departure	
US 190 at FM 974 - Illumination FY 23	Lighting	Intersection lighting	1	Intersections	\$49940	\$49940	HSIP (23 U.S.C. 148)	Multiple/Varies	Multiple/Varies	0		State Highway Agency	Systemic	Intersections	
SH 21 at OSR - Illumination FY 23	Lighting	Intersection lighting	1	Intersections	\$43790	\$43790	HSIP (23 U.S.C. 148)	Multiple/Varies	Multiple/Varies	0		State Highway Agency	Systemic	Intersections	
SH 36 at Geers Rd - Illumination FY 23	Lighting	Intersection lighting	1	Intersections	\$58071	\$58071	HSIP (23 U.S.C. 148)	Multiple/Varies	Multiple/Varies	0		State Highway Agency	Systemic	Intersections	
SH 36 at Dixie Rd - Illumination FY 23	Lighting	Intersection lighting	1	Intersections	\$129295	\$129295	HSIP (23 U.S.C. 148)	Multiple/Varies	Multiple/Varies	0		State Highway Agency	Systemic	Intersections	
US 79 at HEARNE ST - TWLT FY 23	Roadway	Roadway widening - travel lanes	1	Intersections	\$1871445	\$1891445	HSIP (23 U.S.C. 148)	Multiple/Varies	Multiple/Varies	0		State Highway Agency	Systemic	Intersections	
2020-2-CRP_Everhart Rd_CorpusChristi	Pedestrians and bicyclists	Pedestrians and bicyclists – other	0.3	Miles	\$37829	\$82226	HSIP (23 U.S.C. 148)	Multiple/Varies	Multiple/Varies	0		Other Local Agency	Spot	Pedestrians	
2020-2-CRP_GolliharRd_CorpusChristi_1	Pedestrians and bicyclists	Pedestrians and bicyclists – other	0.3	Miles	\$24012	\$61482	HSIP (23 U.S.C. 148)	Multiple/Varies	Multiple/Varies	0		Other Local Agency	Systemic	Pedestrians	

2023 Texas Highway Safety Improvement Program

PROJECT NAME	IMPROVEMENT CATEGORY	SUBCATEGORY	OUTPUTS	OUTPUT TYPE	HSIP PROJECT COST(\$)	TOTAL PROJECT COST(\$)	FUNDING CATEGORY	LAND USE/AREA TYPE	FUNCTIONAL CLASSIFICATION	AADT	SPEED	OWNERSHIP	METHOD FOR SITE SELECTION	SHSP EMPHASIS AREA	SHSP STRATEGY
2020-2-CRP_GolliharRd_CorpusChristi_2	Pedestrians and bicyclists	Pedestrians and bicyclists - other	0.3	Miles	\$23552	\$40014	HSIP (23 U.S.C. 148)	Multiple/Varies	Multiple/Varies	0		Other Local Agency	Systemic	Pedestrians	
2020-2-CRP_GolliharRd_CorpusChristi_3	Pedestrians and bicyclists	Pedestrians and bicyclists - other	0.13	Miles	\$31311	\$60418	HSIP (23 U.S.C. 148)	Multiple/Varies	Multiple/Varies	0		Other Local Agency	Spot	Pedestrians	
2020-2-CRP_McArdleRd_CorpusChristi	Pedestrians and bicyclists	Pedestrians and bicyclists - other	0.58	Miles	\$48322	\$51911	HSIP (23 U.S.C. 148)	Multiple/Varies	Multiple/Varies	0		Other Local Agency	Spot	Pedestrians	
2020-2-CRP_SouthAlamedaSt_CorpusChristi_1	Pedestrians and bicyclists	Pedestrians and bicyclists - other	0.5	Miles	\$33939	\$61797	HSIP (23 U.S.C. 148)	Multiple/Varies	Multiple/Varies	0		Other Local Agency	Systemic	Pedestrians	
2020-2-CRP_SouthAlamedaSt_CorpusChristi_2	Pedestrians and bicyclists	Pedestrians and bicyclists - other	0.5	Miles	\$33066	\$67378	HSIP (23 U.S.C. 148)	Multiple/Varies	Multiple/Varies	0		Other Local Agency	Systemic	Pedestrians	
2020-2-CRP_SouthStaplesSt_CorpusChristi	Pedestrians and bicyclists	Pedestrians and bicyclists - other	0.11	Miles	\$32025	\$54596	HSIP (23 U.S.C. 148)	Multiple/Varies	Multiple/Varies	0		Other Local Agency	Spot	Pedestrians	
2020-2-CRP_YorktownBlvd_CorpusChristi	Roadway delineation	Roadway delineation - other	0.31	Miles	\$22944	\$73984	HSIP (23 U.S.C. 148)	Multiple/Varies	Multiple/Varies	0		Other Local Agency	Systemic	Pedestrians	
2020-2-DAL_FM1377	Roadside	Roadside - other	5.852	Miles	\$8279604	\$8529604	HSIP (23 U.S.C. 148)	Multiple/Varies	Multiple/Varies	0		State Highway Agency	Spot	Roadway Departure	
2020-2-DAL_FM1382_1	Roadside	Barrier - other	2.894	Miles	\$1018737	\$1183737	HSIP (23 U.S.C. 148)	Multiple/Varies	Multiple/Varies	0		State Highway Agency	Systemic	Roadway Departure	
SH 164 at CR 754 - Illumination FY 23	Intersection traffic control	Modify traffic signal - other	1	Intersections	\$42980	\$42980	HSIP (23 U.S.C. 148)	Multiple/Varies	Multiple/Varies	0		State Highway Agency	Systemic	Intersections	
SH OSR at MACY RD Illumination FY 23	Lighting	Intersection lighting	1	Intersections	\$42050	\$42050	HSIP (23 U.S.C. 148)	Multiple/Varies	Multiple/Varies	0		State Highway Agency	Systemic	Intersections	
SH OSR at FM 1940 - Illumination FY 23	Lighting	Intersection lighting	1	Intersections	\$44005	\$44005	HSIP (23 U.S.C. 148)	Multiple/Varies	Multiple/Varies	0		State Highway Agency	Systemic	Intersections	
SH OSR at FM 2223 - Illumination FY 23	Lighting	Intersection lighting	1	Intersections	\$53350	\$53350	HSIP (23 U.S.C. 148)	Multiple/Varies	Multiple/Varies	0		State Highway Agency	Systemic	Intersections	

2023 Texas Highway Safety Improvement Program

PROJECT NAME	IMPROVEMENT CATEGORY	SUBCATEGORY	OUTPUTS	OUTPUT TYPE	HSIP PROJECT COST(\$)	TOTAL PROJECT COST(\$)	FUNDING CATEGORY	LAND USE/AREA TYPE	FUNCTIONAL CLASSIFICATION	AADT	SPEED	OWNERSHIP	METHOD FOR SITE SELECTION	SHSP EMPHASIS AREA	SHSP STRATEGY
FM 2154 AT GRAM RD - LEFT TURN FY 23	Pedestrians and bicyclists	Medians and pedestrian refuge areas	1	Intersections	\$190671	\$190671	HSIP (23 U.S.C. 148)	Multiple/Varies	Multiple/Varies	0		State Highway Agency	Spot	Roadway Departure	
FM 2154 at FM 159 - Illumination FY 23	Lighting	Intersection lighting	1	Intersections	\$70615	\$70615	HSIP (23 U.S.C. 148)	Multiple/Varies	Multiple/Varies	0		State Highway Agency	Systemic	Intersections	
SH 3090 at CR 424 - Beacon FY 23	Roadway signs and traffic control	Curve-related warning signs and flashers	1	Intersections	\$17800	\$17800	HSIP (23 U.S.C. 148)	Multiple/Varies	Multiple/Varies	0		State Highway Agency	Spot	Roadway Departure	
FM 1179 @ Merka Rd -Flashing Beacon FY23	Roadway signs and traffic control	Curve-related warning signs and flashers	0.4	Miles	\$17850	\$17850	HSIP (23 U.S.C. 148)	Multiple/Varies	Multiple/Varies	0		State Highway Agency	Spot	Roadway Departure	
FM 908 at FM 486 - Illumination FY 23	Intersection traffic control	Intersection signing – add basic advance warning	1	Intersections	\$51979	\$51979	HSIP (23 U.S.C. 148)	Multiple/Varies	Multiple/Varies	0		State Highway Agency	Spot	Intersections	
FM 2818 at FM 1687 - Signal FY 23	Intersection traffic control	Modify control – new traffic signal	1	Intersections	\$1383432	\$1414431	HSIP (23 U.S.C. 148)	Multiple/Varies	Multiple/Varies	0		State Highway Agency	Systemic	Intersections	
SH 47 at Leonard Rd - Turn Lane FY 23	Intersection geometry	Add/modify auxiliary lanes	0.6	Miles	\$572787	\$572787	HSIP (23 U.S.C. 148)	Multiple/Varies	Multiple/Varies	0		State Highway Agency	Systemic	Intersections	
FM 2125_1of2 FM 2632 to Shady Oaks Dr.	Shoulder treatments	Widen shoulder – paved or other (includes add shoulder)	1	Locations	\$1143144	\$1198144	HSIP (23 U.S.C. 148)	Multiple/Varies	Multiple/Varies	0		State Highway Agency	Systemic	Roadway Departure	
SS 133 @ LP 285	Lighting	Intersection lighting	1	Miles	\$34272	\$34272	HSIP (23 U.S.C. 148)	Multiple/Varies	Multiple/Varies	0		State Highway Agency	Spot	Intersections	
2000' West of FM 2474 to US 83	Roadside	Barrier - other	1	Locations	\$1036091	\$1173091	HSIP (23 U.S.C. 148)	Multiple/Varies	Multiple/Varies	0		State Highway Agency	Systemic	Roadway Departure	
CRP_IH0037_1_1_NUECES_HSIP	Advanced technology and ITS	Wrong-way Driving Detection System	1	Intersections	\$420462	\$431462	HSIP (23 U.S.C. 148)	Multiple/Varies	Multiple/Varies	0		State Highway Agency	Spot	Older Drivers	
CRP_SH0359_1_1/4_JIMWELLS_HSIP	Intersection traffic control	Intersection signing – add basic advance warning	1	Intersections	\$156536	\$158536	HSIP (23 U.S.C. 148)	Multiple/Varies	Multiple/Varies	0		State Highway Agency	Systemic	Intersections	

2023 Texas Highway Safety Improvement Program

PROJECT NAME	IMPROVEMENT CATEGORY	SUBCATEGORY	OUTPUTS	OUTPUT TYPE	HSIP PROJECT COST(\$)	TOTAL PROJECT COST(\$)	FUNDING CATEGORY	LAND USE/AREA TYPE	FUNCTIONAL CLASSIFICATION	AADT	SPEED	OWNERSHIP	METHOD FOR SITE SELECTION	SHSP EMPHASIS AREA	SHSP STRATEGY
CRP_FM0099_1_1/3_LIVEOAK_HSIP	Intersection traffic control	Intersection signing – add basic advance warning	1	Intersections	\$126603	\$126603	HSIP (23 U.S.C. 148)	Multiple/Varies	Multiple/Varies	0		State Highway Agency	Systemic	Intersections	
CRP_SH0358_1_1_NUECES_HSIP	Advanced technology and ITS	Wrong-way Driving Detection System	1	Intersections	\$481246	\$492246	HSIP (23 U.S.C. 148)	Multiple/Varies	Multiple/Varies	0		State Highway Agency	Spot	Older Drivers	
CRP_FM0099_1_2/3_KLEBERG_HSIP	Intersection traffic control	Intersection signing – add basic advance warning	1	Intersections	\$119089	\$119089	HSIP (23 U.S.C. 148)	Multiple/Varies	Multiple/Varies	0		State Highway Agency	Systemic	Intersections	
CRP_SH0359_1_3/4_KLEBERG_HSIP	Intersection traffic control	Intersection signing – add basic advance warning	1	Intersections	\$56189	\$56189	HSIP (23 U.S.C. 148)	Multiple/Varies	Multiple/Varies	0		State Highway Agency	Systemic	Intersections	
CRP_FM0099_1_3/3_NUECES_HSIP	Intersection traffic control	Intersection signing – add basic advance warning	1	Intersections	\$118791	\$118791	HSIP (23 U.S.C. 148)	Multiple/Varies	Multiple/Varies	0		State Highway Agency	Systemic	Intersections	
CRP_FM1717_1_1_KLEBERG_HSIP	Lighting	Intersection lighting	1	Intersections	\$81647	\$81647	HSIP (23 U.S.C. 148)	Multiple/Varies	Multiple/Varies	0		State Highway Agency	Spot	Intersections	
CRP_FM2292_1_1_NUECES_HSIP	Pedestrians and bicyclists	Install sidewalk	1.6	Miles	\$129119	\$129119	HSIP (23 U.S.C. 148)	Multiple/Varies	Multiple/Varies	0		State Highway Agency	Spot	Roadway Departure	
CRP_SH0359_1_2/4_KLEBERG_HSIP	Intersection traffic control	Intersection signing – add basic advance warning	1	Intersections	\$50475	\$50475	HSIP (23 U.S.C. 148)	Multiple/Varies	Multiple/Varies	0		State Highway Agency	Systemic	Intersections	
CRP_SH0359_1_4/4_KLEBERG_HSIP	Intersection traffic control	Intersection signing – add basic advance warning	1	Intersections	\$52213	\$52213	HSIP (23 U.S.C. 148)	Multiple/Varies	Multiple/Varies	0		State Highway Agency	Systemic	Intersections	
SH66-1-1/1	Intersection traffic control	Modify traffic signal –other	1	Intersections	\$1441241	\$1500532	HSIP (23 U.S.C. 148)	Multiple/Varies	Multiple/Varies	0		State Highway Agency	Spot	Intersections	
US75-2-1/1	Intersection traffic control	Modify traffic signal –other	1	Intersections	\$586309	\$696309	HSIP (23 U.S.C. 148)	Multiple/Varies	Multiple/Varies	0		State Highway Agency	Spot	Intersections	
2020-2-DAL_FM1565_1	Lighting	Intersection lighting	0.1	Miles	\$51535	\$72535	HSIP (23 U.S.C. 148)	Multiple/Varies	Multiple/Varies	0		State Highway Agency	Spot	Intersections	

2023 Texas Highway Safety Improvement Program

PROJECT NAME	IMPROVEMENT CATEGORY	SUBCATEGORY	OUTPUTS	OUTPUT TYPE	HSIP PROJECT COST(\$)	TOTAL PROJECT COST(\$)	FUNDING CATEGORY	LAND USE/AREA TYPE	FUNCTIONAL CLASSIFICATION	AADT	SPEED	OWNERSHIP	METHOD FOR SITE SELECTION	SHSP EMPHASIS AREA	SHSP STRATEGY
2020-2-DAL_FM2451_1	Lighting	Intersection lighting	0.1	Miles	\$62502	\$67502	HSIP (23 U.S.C. 148)	Multiple/Varies	Multiple/Varies	0		State Highway Agency	Spot	Intersections	
2020-2-DAL_FM2478	Roadside	Roadside other	5.948	Miles	\$9301659	\$9506659	HSIP (23 U.S.C. 148)	Multiple/Varies	Multiple/Varies	0		State Highway Agency	Spot	Roadway Departure	
2020-2-DAL_FM2728_1	Lighting	Intersection lighting	0.1	Miles	\$118067	\$123067	HSIP (23 U.S.C. 148)	Multiple/Varies	Multiple/Varies	0		State Highway Agency	Spot	Intersections	
2020-2-DAL_FM2728_2	Lighting	Intersection lighting	0.1	Miles	\$56785	\$61785	HSIP (23 U.S.C. 148)	Multiple/Varies	Multiple/Varies	0		State Highway Agency	Spot	Intersections	
2020-2-DAL_FM2862	Roadside	Roadside other	4.639	Miles	\$7607273	\$7907719	HSIP (23 U.S.C. 148)	Multiple/Varies	Multiple/Varies	0		State Highway Agency	Spot	Roadway Departure	
2020-2-DAL_FM0407	Roadway delineation	Roadway delineation other	2.947	Miles	\$2317000	\$2317000	HSIP (23 U.S.C. 148)	Multiple/Varies	Multiple/Varies	0		State Highway Agency	Spot	Roadway Departure	
US80-1-1/1	Roadside	Barrier - other	1	Locations	\$1089056	\$1117056	HSIP (23 U.S.C. 148)	Multiple/Varies	Multiple/Varies	0		State Highway Agency	Systemic	Roadway Departure	
2020-2-DAL_FM0644_1	Roadway signs and traffic control	Curve-related warning signs and flashers	3.931	Miles	\$130704	\$130704	HSIP (23 U.S.C. 148)	Multiple/Varies	Multiple/Varies	0		State Highway Agency	Spot	Roadway Departure	
2020-2-DAL_FM0878	Roadway signs and traffic control	Curve-related warning signs and flashers	1.812	Miles	\$125079	\$125079	HSIP (23 U.S.C. 148)	Multiple/Varies	Multiple/Varies	0		State Highway Agency	Spot	Roadway Departure	
2020-2-DAL_FM0879	Roadway signs and traffic control	Curve-related warning signs and flashers	10.136	Miles	\$117087	\$117087	HSIP (23 U.S.C. 148)	Multiple/Varies	Multiple/Varies	0		State Highway Agency	Spot	Roadway Departure	
US77-1-1/1	Intersection traffic control	Modify control – new traffic signal	0.379	Intersections	\$545919	\$592901	HSIP (23 U.S.C. 148)	Multiple/Varies	Multiple/Varies	0		State Highway Agency	Spot	Intersections	
SL12-6-4/4	Intersection traffic control	Modify traffic signal –other	22	Intersections	\$72540	\$73040	HSIP (23 U.S.C. 148)	Multiple/Varies	Multiple/Varies	0		State Highway Agency	Systemic	Intersections	
SL12-6-3/4	Intersection traffic control	Modify traffic signal –other	22	Intersections	\$132885	\$133385	HSIP (23 U.S.C. 148)	Multiple/Varies	Multiple/Varies	0		State Highway Agency	Systemic	Intersections	

2023 Texas Highway Safety Improvement Program

PROJECT NAME	IMPROVEMENT CATEGORY	SUBCATEGORY	OUTPUTS	OUTPUT TYPE	HSIP PROJECT COST(\$)	TOTAL PROJECT COST(\$)	FUNDING CATEGORY	LAND USE/AREA TYPE	FUNCTIONAL CLASSIFICATION	AADT	SPEED	OWNERSHIP	METHOD FOR SITE SELECTION	SHSP EMPHASIS AREA	SHSP STRATEGY
SH121-1-1/1	Intersection traffic control	Modify traffic signal –other	1	Intersections	\$285908	\$286908	HSIP (23 U.S.C. 148)	Multiple/Varies	Multiple/Varies	0		State Highway Agency	Spot	Intersections	
SH121-2-1/1	Roadside	Barrier - other	1	Locations	\$353858	\$353858	HSIP (23 U.S.C. 148)	Multiple/Varies	Multiple/Varies	0		State Highway Agency	Systemic	Roadway Departure	
SL12-6-2/4	Intersection traffic control	Modify traffic signal –other	23	Intersections	\$193465	\$193965	HSIP (23 U.S.C. 148)	Multiple/Varies	Multiple/Varies	0		State Highway Agency	Systemic	Intersections	
SL12-6-1/4	Intersection traffic control	Modify traffic signal –other	23	Intersections	\$155740	\$156240	HSIP (23 U.S.C. 148)	Multiple/Varies	Multiple/Varies	0		State Highway Agency	Systemic	Intersections	
Alma at Hedgecoxe	Intersection traffic control	Modify traffic signal –other	1	Intersections	\$102061	\$167083	HSIP (23 U.S.C. 148)	Multiple/Varies	Multiple/Varies	0		Other Local Agency	Spot	Intersections	
Alma at Comanche	Intersection traffic control	Modify traffic signal –other	1	Intersections	\$96253	\$125868	HSIP (23 U.S.C. 148)	Multiple/Varies	Multiple/Varies	0		Other Local Agency	Spot	Intersections	
E Bethany Dr at Malone Rd	Intersection traffic control	Modify traffic signal –other	1	Intersections	\$86665	\$116636	HSIP (23 U.S.C. 148)	Multiple/Varies	Multiple/Varies	0		Other Local Agency	Spot	Intersections	
Exchange PKWY at Andrews PKWY	Intersection traffic control	Modify traffic signal –other	1	Intersections	\$74432	\$129053	HSIP (23 U.S.C. 148)	Multiple/Varies	Multiple/Varies	0		Other Local Agency	Spot	Intersections	
Greenville Ave at Ridgemont Dr	Intersection traffic control	Modify control – new traffic signal	1	Intersections	\$359713	\$504102	HSIP (23 U.S.C. 148)	Multiple/Varies	Multiple/Varies	0		Other Local Agency	Spot	Intersections	
Hedgecoxe Dr at Dutchess Dr	Intersection traffic control	Modify traffic signal –other	1	Intersections	\$104106	\$162840	HSIP (23 U.S.C. 148)	Multiple/Varies	Multiple/Varies	0		Other Local Agency	Spot	Intersections	
Main St at S Allen Heights	Intersection traffic control	Modify traffic signal –other	1	Intersections	\$217846	\$282868	HSIP (23 U.S.C. 148)	Multiple/Varies	Multiple/Varies	0		Other Local Agency	Spot	Intersections	
Mcdermott Rd at Watters Rd	Intersection traffic control	Modify traffic signal –other	1	Intersections	\$249599	\$339482	HSIP (23 U.S.C. 148)	Multiple/Varies	Multiple/Varies	0		Other Local Agency	Spot	Intersections	
Stacy Rd at Andrews Pkwy	Intersection traffic control	Modify traffic signal –other	1	Intersections	\$103351	\$168373	HSIP (23 U.S.C. 148)	Multiple/Varies	Multiple/Varies	0		Other Local Agency	Spot	Intersections	

2023 Texas Highway Safety Improvement Program

PROJECT NAME	IMPROVEMENT CATEGORY	SUBCATEGORY	OUTPUTS	OUTPUT TYPE	HSIP PROJECT COST(\$)	TOTAL PROJECT COST(\$)	FUNDING CATEGORY	LAND USE/AREA TYPE	FUNCTIONAL CLASSIFICATION	AADT	SPEED	OWNERSHIP	METHOD FOR SITE SELECTION	SHSP EMPHASIS AREA	SHSP STRATEGY
Stacy Rd at Chelsea Blvd	Intersection traffic control	Modify traffic signal –other	1	Intersections	\$64681	\$95128	HSIP (23 U.S.C. 148)	Multiple/Varies	Multiple/Varies	0		Other Local Agency	Spot	Intersections	
Stacy Rd at N Waters Rd	Intersection traffic control	Modify traffic signal –other	1	Intersections	\$391126	\$903590	HSIP (23 U.S.C. 148)	Multiple/Varies	Multiple/Varies	0		Other Local Agency	Spot	Intersections	
2020-2-DAL_IH0035W	Lighting	Continuous roadway lighting	0.75	Miles	\$437111	\$458111	HSIP (23 U.S.C. 148)	Multiple/Varies	Multiple/Varies	0		State Highway Agency	Spot	Roadway Departure	
Peach Tree Rd at US175 FR In Cty Blch Sp	Roadway signs and traffic control	Curve-related warning signs and flashers	1	Intersections	\$143721	\$204920	HSIP (23 U.S.C. 148)	Multiple/Varies	Multiple/Varies	0		Other Local Agency	Spot	Roadway Departure	
FM 546 AT FM 3286 INTERSECTION	Alignment	Alignment - other	0.7030000000000001	Intersections	\$3312754	\$3467754	HSIP (23 U.S.C. 148)	Multiple/Varies	Multiple/Varies	0		State Highway Agency	Spot	Roadway Departure	
FM1641 at Monitor blvd in Cty of Forney	Intersection traffic control	Modify traffic signal –other	1	Intersections	\$1312390	\$1312390	HSIP (23 U.S.C. 148)	Multiple/Varies	Multiple/Varies	0		State Highway Agency	Spot	Intersections	
US 83, East to CR 18	Roadside	Barrier - other	1	Locations	\$393990	\$393990	HSIP (23 U.S.C. 148)	Multiple/Varies	Multiple/Varies	0		State Highway Agency	Systemic	Roadway Departure	
FM2931-1/1/1	Shoulder treatments	Widen shoulder – paved or other (includes add shoulder)	1	Locations	\$4665614	\$4850390	HSIP (23 U.S.C. 148)	Multiple/Varies	Multiple/Varies	0		State Highway Agency	Spot	Roadway Departure	
SH20 TRAFFIC SIGNAL (AT FM76)	Intersection traffic control	Modify traffic signal –other	1	Intersections	\$517228	\$517228	HSIP (23 U.S.C. 148)	Multiple/Varies	Multiple/Varies	0		State Highway Agency	Spot	Intersections	
ELP_US0067_1-SYS	Lighting	Intersection lighting	1	Intersections	\$145526	\$145526	HSIP (23 U.S.C. 148)	Multiple/Varies	Multiple/Varies	0		State Highway Agency	Systemic	Intersections	
ELP_SH0017_2-SYS	Intersection traffic control	Systemic improvements – stop-controlled	1	Intersections	\$151554	\$151554	HSIP (23 U.S.C. 148)	Multiple/Varies	Multiple/Varies	0		State Highway Agency	Systemic	Intersections	
ELP_SH0017_3-SYS	Intersection traffic control	Systemic improvements – stop-controlled	1	Intersections	\$131517	\$131517	HSIP (23 U.S.C. 148)	Multiple/Varies	Multiple/Varies	0		State Highway Agency	Systemic	Intersections	

2023 Texas Highway Safety Improvement Program

PROJECT NAME	IMPROVEMENT CATEGORY	SUBCATEGORY	OUTPUTS	OUTPUT TYPE	HSIP PROJECT COST(\$)	TOTAL PROJECT COST(\$)	FUNDING CATEGORY	LAND USE/AREA TYPE	FUNCTIONAL CLASSIFICATION	AADT	SPEED	OWNERSHIP	METHOD FOR SITE SELECTION	SHSP EMPHASIS AREA	SHSP STRATEGY
ELP_SH0017_1-SYS	Intersection traffic control	Systemic improvements – stop-controlled	1	Intersections	\$36441	\$36441	HSIP (23 U.S.C. 148)	Multiple/Varies	Multiple/Varies	0		State Highway Agency	Systemic	Intersections	
2021 - PHR - FM 755	Intersection traffic control	Modify control – new traffic signal	0.2	Miles	\$254170	\$254170	HSIP (23 U.S.C. 148)	Multiple/Varies	Multiple/Varies	0		State Highway Agency	Spot	Intersections	
2020-2-DAL_SH0034_5	Intersection geometry	Add/modify auxiliary lanes	0.4	Miles	\$393546	\$393546	HSIP (23 U.S.C. 148)	Multiple/Varies	Multiple/Varies	0		State Highway Agency	Systemic	Intersections	
2020-2-DAL_SH0034_6	Roadway delineation	Roadway delineation - other	5.034	Miles	\$11469433	\$11633894	HSIP (23 U.S.C. 148)	Multiple/Varies	Multiple/Varies	0		State Highway Agency	Spot	Roadway Departure	
2020-2-DAL_SL0012_1	Pedestrians and bicyclists	Install sidewalk	5.906	Miles	\$1066158	\$1066158	HSIP (23 U.S.C. 148)	Multiple/Varies	Multiple/Varies	0		State Highway Agency	Spot	Pedestrians	
2020-2-US0287_3	Intersection geometry	Add/modify auxiliary lanes	1.362	Miles	\$1859514	\$1964514	HSIP (23 U.S.C. 148)	Multiple/Varies	Multiple/Varies	0		State Highway Agency	Spot	Intersections	
ELP_SH0166_2-SYS	Intersection traffic control	Systemic improvements – stop-controlled	1	Intersections	\$197790	\$197790	HSIP (23 U.S.C. 148)	Multiple/Varies	Multiple/Varies	0		State Highway Agency	Systemic	Intersections	
Arlington OFF-SYSTEM-1, 1 of 1	Intersection traffic control	Modify traffic signal –other	22	Intersections	\$756486	\$756486	HSIP (23 U.S.C. 148)	Multiple/Varies	Multiple/Varies	0		Other Local Agency	Systemic	Intersections	
Arlington OFF-SYSTEM-2, 1 of 1	Intersection traffic control	Modify traffic signal –other	180	Intersections	\$196854	\$196854	HSIP (23 U.S.C. 148)	Multiple/Varies	Multiple/Varies	0		Other Local Agency	Systemic	Intersections	
Arlington ON-SYSTEM-1, 1 of 1	Intersection traffic control	Modify traffic signal –other	8	Intersections	\$436584	\$1386435	HSIP (23 U.S.C. 148)	Multiple/Varies	Multiple/Varies	0		State Highway Agency	Systemic	Intersections	
Arlington ON-SYSTEM-2, 1 of 1	Intersection traffic control	Modify traffic signal –other	58	Intersections	\$64534	\$167652	HSIP (23 U.S.C. 148)	Multiple/Varies	Multiple/Varies	0		Other Local Agency	Systemic	Intersections	
FM 917, 1 of 1	Roadway signs and traffic control	Curve-related warning signs and flashers	1	Locations	\$124510	\$124510	HSIP (23 U.S.C. 148)	Multiple/Varies	Multiple/Varies	0		State Highway Agency	Spot	Roadway Departure	
2021 - PHR - FM 681	Intersection traffic control	Modify control – new traffic signal	0.2	Miles	\$290587	\$290587	HSIP (23 U.S.C. 148)	Multiple/Varies	Multiple/Varies	0		State Highway Agency	Spot	Intersections	

2023 Texas Highway Safety Improvement Program

PROJECT NAME	IMPROVEMENT CATEGORY	SUBCATEGORY	OUTPUTS	OUTPUT TYPE	HSIP PROJECT COST(\$)	TOTAL PROJECT COST(\$)	FUNDING CATEGORY	LAND USE/AREA TYPE	FUNCTIONAL CLASSIFICATION	AADT	SPEED	OWNERSHIP	METHOD FOR SITE SELECTION	SHSP EMPHASIS AREA	SHSP STRATEGY
2020-2-DAL_US0380_1	Lighting	Continuous roadway lighting	2.624	Miles	\$200000	\$203900	HSIP (23 U.S.C. 148)	Multiple/Varies	Multiple/Varies	0		State Highway Agency	Spot	Roadway Departure	
2020-2-DAL_US0067_1	Roadside	Barrier - other	3.835	Miles	\$681861	\$721861	HSIP (23 U.S.C. 148)	Multiple/Varies	Multiple/Varies	0		State Highway Agency	Systemic	Roadway Departure	
2020-2-DAL_Audelia-Church_Dallas.pdf	Intersection traffic control	Modify traffic signal –other	0.2	Miles	\$392090	\$485647	HSIP (23 U.S.C. 148)	Multiple/Varies	Multiple/Varies	0		Other Local Agency	Spot	Intersections	
2020-2-DAL_Beckley-Kiest_Dallas.pdf	Intersection traffic control	Modify traffic signal –other	0.2	Miles	\$385798	\$486483	HSIP (23 U.S.C. 148)	Multiple/Varies	Multiple/Varies	0		Other Local Agency	Spot	Intersections	
2020-2-DAL_BeltLineRd_BalchSprings	Intersection traffic control	Modify control – new traffic signal	0.2	Miles	\$415457	\$458911	HSIP (23 U.S.C. 148)	Multiple/Varies	Multiple/Varies	0		Other Local Agency	Spot	Intersections	
FM 917-2, 1 of 1	Roadway delineation	Roadway delineation - other	1	Locations	\$414759	\$429759	HSIP (23 U.S.C. 148)	Multiple/Varies	Multiple/Varies	0		State Highway Agency	Spot	Roadway Departure	
FM 4, 2 of 2	Roadway signs and traffic control	Curve-related warning signs and flashers	9.732	Miles	\$281399	\$281399	HSIP (23 U.S.C. 148)	Multiple/Varies	Multiple/Varies	0		State Highway Agency	Spot	Roadway Departure	
FM 4, 1of 2	Roadway signs and traffic control	Curve-related warning signs and flashers	1	Locations	\$92446	\$92446	HSIP (23 U.S.C. 148)	Multiple/Varies	Multiple/Varies	0		State Highway Agency	Spot	Roadway Departure	
2021 - PHR - FM 2128	Intersection traffic control	Modify control – new traffic signal	0.2	Miles	\$218832	\$258832	HSIP (23 U.S.C. 148)	Multiple/Varies	Multiple/Varies	0		State Highway Agency	Spot	Intersections	
2020-2-DAL_Bickers-Hampton_Dallas.pdf	Intersection traffic control	Modify traffic signal –other	0.2	Miles	\$414388	\$543212	HSIP (23 U.S.C. 148)	Multiple/Varies	Multiple/Varies	0		Other Local Agency	Spot	Intersections	
2021 - PHR - US 83	Intersection traffic control	Modify control – new traffic signal	0.2	Miles	\$301665	\$331665	HSIP (23 U.S.C. 148)	Multiple/Varies	Multiple/Varies	0		State Highway Agency	Spot	Intersections	
VA, St George Place Improvements	Pedestrians and bicyclists	Install new crosswalk	1	Intersections	\$548078	\$548078	HSIP (23 U.S.C. 148)	Multiple/Varies	Multiple/Varies	0		Other Local Agency	Systemic	Pedestrians	
VA, 19th St Improvements	Pedestrians and bicyclists	Install sidewalk	1	Locations	\$821880	\$3486985	HSIP (23 U.S.C. 148)	Multiple/Varies	Multiple/Varies	0		Other Local Agency	Systemic	Pedestrians	

2023 Texas Highway Safety Improvement Program

PROJECT NAME	IMPROVEMENT CATEGORY	SUBCATEGORY	OUTPUTS	OUTPUT TYPE	HSIP PROJECT COST(\$)	TOTAL PROJECT COST(\$)	FUNDING CATEGORY	LAND USE/AREA TYPE	FUNCTIONAL CLASSIFICATION	AADT	SPEED	OWNERSHIP	METHOD FOR SITE SELECTION	SHSP EMPHASIS AREA	SHSP STRATEGY
Bingle Rd at Tidwell Rd	Roadway delineation	Roadway delineation - other	1	Intersections	\$354024	\$425377	HSIP (23 U.S.C. 148)	Multiple/Varies	Multiple/Varies	0		Other Local Agency	Systemic	Roadway Departure	
Almeda Rd, From Wheeler To S Macgregor	Roadway delineation	Roadway delineation - other	1	Locations	\$341000	\$412141	HSIP (23 U.S.C. 148)	Multiple/Varies	Multiple/Varies	0		Other Local Agency	Systemic	Roadway Departure	
CS: 0915-00-264; Post Oak SFT	Shoulder treatments	Pave existing shoulders	1	Locations	\$2147580	\$2157580	HSIP (23 U.S.C. 148)	Multiple/Varies	Multiple/Varies	0		Other Local Agency	Systemic	Roadway Departure	
US 90: 0029-02-058: SFT	Intersection traffic control	Modify traffic signal -other	0.2	Miles	\$302580	\$312080	HSIP (23 U.S.C. 148)	Multiple/Varies	Multiple/Varies	0		State Highway Agency	Spot	Intersections	
2020-2-DAL_Ferguson-Woodmeadow_Dallas.pdf	Intersection traffic control	Modify traffic signal -other	0.2	Miles	\$407485	\$547594	HSIP (23 U.S.C. 148)	Multiple/Varies	Multiple/Varies	0		Other Local Agency	Spot	Intersections	
2020-2-DAL_Forest_Park-Mockingbird_Dallas.pdf	Intersection traffic control	Modify traffic signal -other	0.2	Miles	\$411378	\$607447	HSIP (23 U.S.C. 148)	Multiple/Varies	Multiple/Varies	0		Other Local Agency	Spot	Intersections	
2020-2-DAL_Jefferson-Zang_Dallas.pdf	Intersection traffic control	Modify traffic signal -other	0.2	Miles	\$398060	\$503301	HSIP (23 U.S.C. 148)	Multiple/Varies	Multiple/Varies	0		Other Local Agency	Spot	Intersections	
2020-2-DAL_Kiest-Polk_Dallas.pdf	Intersection traffic control	Modify traffic signal -other	0.2	Miles	\$338706	\$439391	HSIP (23 U.S.C. 148)	Multiple/Varies	Multiple/Varies	0		Other Local Agency	Spot	Intersections	
2020-2-DAL_Kiest-Westmoreland_Dallas.pdf	Intersection traffic control	Modify traffic signal -other	0.2	Miles	\$422250	\$522935	HSIP (23 U.S.C. 148)	Multiple/Varies	Multiple/Varies	0		Other Local Agency	Spot	Intersections	
2020-2-DAL_LakeJuneRd_BalchSprings	Intersection traffic control	Modify traffic signal -other	0.2	Miles	\$467207	\$513920	HSIP (23 U.S.C. 148)	Multiple/Varies	Multiple/Varies	0		Other Local Agency	Spot	Intersections	
US0062-1-1/1	Intersection traffic control	Modify traffic signal -other	1	Intersections	\$340196	\$427946	HSIP (23 U.S.C. 148)	Multiple/Varies	Multiple/Varies	0		State Highway Agency	Spot	Intersections	
BS 21P_FM 225 to BU 59F - HES	Intersection traffic control	Modify traffic signal -other	1	Intersections	\$32125	\$34125	HSIP (23 U.S.C. 148)	Multiple/Varies	Multiple/Varies	0		State Highway Agency	Systemic	Intersections	
BS 7N_BU 59F to BS 21P - HES	Intersection traffic control	Modify traffic signal -other	1	Intersections	\$6942	\$6942	HSIP (23 U.S.C. 148)	Multiple/Varies	Multiple/Varies	0		State Highway Agency	Systemic	Intersections	

2023 Texas Highway Safety Improvement Program

PROJECT NAME	IMPROVEMENT CATEGORY	SUBCATEGORY	OUTPUTS	OUTPUT TYPE	HSIP PROJECT COST(\$)	TOTAL PROJECT COST(\$)	FUNDING CATEGORY	LAND USE/AREA TYPE	FUNCTIONAL CLASSIFICATION	AADT	SPEED	OWNERSHIP	METHOD FOR SITE SELECTION	SHSP EMPHASIS AREA	SHSP STRATEGY
BU 59F_FM 343 to BS 21P - HES	Intersection traffic control	Modify traffic signal –other	1	Intersections	\$98698	\$98698	HSIP (23 U.S.C. 148)	Multiple/Varies	Multiple/Varies	0		State Highway Agency	Systemic	Intersections	
BU 59F_BS 21 to SL 224 - HES	Intersection traffic control	Modify traffic signal –other	1	Intersections	\$42112	\$42112	HSIP (23 U.S.C. 148)	Multiple/Varies	Multiple/Varies	0		State Highway Agency	Systemic	Intersections	
2022 - AMA - SL 335	Roadside	Barrier - other	3.102	Miles	\$262217	\$2626617	HSIP (23 U.S.C. 148)	Multiple/Varies	Multiple/Varies	0		State Highway Agency	Systemic	Roadway Departure	
FM 1275_BS 21P to SL 224 South - HES	Intersection traffic control	Modify traffic signal –other	1	Intersections	\$15568	\$15568	HSIP (23 U.S.C. 148)	Multiple/Varies	Multiple/Varies	0		State Highway Agency	Systemic	Intersections	
FM 1638_US 59 to BU 59F - HES	Intersection traffic control	Modify traffic signal –other	1	Intersections	\$15114	\$15114	HSIP (23 U.S.C. 148)	Multiple/Varies	Multiple/Varies	0		State Highway Agency	Systemic	Intersections	
FM 1275_SL 224 North to BS 21P - HES	Intersection traffic control	Modify traffic signal –other	1	Intersections	\$41232	\$41232	HSIP (23 U.S.C. 148)	Multiple/Varies	Multiple/Varies	0		State Highway Agency	Systemic	Intersections	
SH 7_US 59 to BS 7N	Intersection traffic control	Modify traffic signal –other	1	Intersections	\$39655	\$39655	HSIP (23 U.S.C. 148)	Multiple/Varies	Multiple/Varies	0		State Highway Agency	Systemic	Intersections	
SL 224_US 59 North to SH 7 East - HES	Intersection traffic control	Modify traffic signal –other	1	Intersections	\$30136	\$30136	HSIP (23 U.S.C. 148)	Multiple/Varies	Multiple/Varies	0		State Highway Agency	Systemic	Intersections	
FM 2609_SL 224 to FM 1275 - HES	Intersection traffic control	Modify traffic signal –other	1	Intersections	\$8172	\$8172	HSIP (23 U.S.C. 148)	Multiple/Varies	Multiple/Varies	0		State Highway Agency	Systemic	Intersections	
FM 2781_SH7 to County Road 551 - HES	Roadside	Roadside - other	1	Locations	\$6555942	\$7612481	HSIP (23 U.S.C. 148)	Multiple/Varies	Multiple/Varies	0		State Highway Agency	Spot	Roadway Departure	
0086-14,SS 260, Interconnect Signals	Intersection traffic control	Modify traffic signal timing – signal coordination	5	Intersections	\$225650	\$302650	HSIP (23 U.S.C. 148)	Multiple/Varies	Multiple/Varies	0		State Highway Agency	Spot	Intersections	
2020-2-DAL_Marsalis-Overton_Dallas.pdf	Intersection traffic control	Modify traffic signal –other	0.2	Miles	\$315390	\$403308	HSIP (23 U.S.C. 148)	Multiple/Varies	Multiple/Varies	0		Other Local Agency	Spot	Intersections	
FM 3443, Safety Illumination	Lighting	Continuous roadway lighting	1	Locations	\$486104	\$486104	HSIP (23 U.S.C. 148)	Multiple/Varies	Multiple/Varies	0		State Highway Agency	Systemic	Roadway Departure	

2023 Texas Highway Safety Improvement Program

PROJECT NAME	IMPROVEMENT CATEGORY	SUBCATEGORY	OUTPUTS	OUTPUT TYPE	HSIP PROJECT COST(\$)	TOTAL PROJECT COST(\$)	FUNDING CATEGORY	LAND USE/AREA TYPE	FUNCTIONAL CLASSIFICATION	AADT	SPEED	OWNERSHIP	METHOD FOR SITE SELECTION	SHSP EMPHASIS AREA	SHSP STRATEGY
0542-01, BU 59Z, Safety Illumination	Lighting	Continuous roadway lighting	1	Locations	\$706516	\$756516	HSIP (23 U.S.C. 148)	Multiple/Varies	Multiple/Varies	0		State Highway Agency	Systemic	Roadway Departure	
Local Rd International, Install Traffic	Intersection traffic control	Modify control – new traffic signal	1	Intersections	\$218853	\$218853	HSIP (23 U.S.C. 148)	Multiple/Varies	Multiple/Varies	0		Other Local Agency	Spot	Intersections	
2020HSIP_SH17_COTTON_ST_3/4TH_MIS_CR203	Roadway	Roadway widening - travel lanes	3.037	Miles	\$6972496	\$7067496	HSIP (23 U.S.C. 148)	Multiple/Varies	Multiple/Varies	0		State Highway Agency	Spot	Intersections	
IH10-1	Lighting	Intersection lighting	5	Intersections	\$3569918	\$3609918	VRU Safety Special Rule (23 U.S.C. 148(g)(3))	Multiple/Varies	Multiple/Varies	0		State Highway Agency	Systemic	Intersections	
2020HSIP_SH128_AT_REFMRKR230	Roadway delineation	Roadway delineation - other	1	Miles	\$2016118	\$2016118	HSIP (23 U.S.C. 148)	Multiple/Varies	Multiple/Varies	0		State Highway Agency	Spot	Roadway Departure	
2020HSIP_FM1776_FM1927	Intersection traffic control	Modify traffic signal – other	0.4	Intersections	\$5823543	\$5874543	VRU Safety Special Rule (23 U.S.C. 148(g)(3))	Multiple/Varies	Multiple/Varies	0		State Highway Agency	Spot	Intersections	
US 82 HSIP	Intersection geometry	Add/modify auxiliary lanes	1	Intersections	\$1751101	\$1811694	HSIP (23 U.S.C. 148)	Multiple/Varies	Multiple/Varies	0		State Highway Agency	Spot	Intersections	
US 82 - 2	Lighting	Intersection lighting	1	Intersections	\$241070	\$282302	HSIP (23 U.S.C. 148)	Multiple/Varies	Multiple/Varies	0		State Highway Agency	Systemic	Intersections	
US 82 - 1	Lighting	Intersection lighting	1	Intersections	\$58775	\$58775	HSIP (23 U.S.C. 148)	Multiple/Varies	Multiple/Varies	0		State Highway Agency	Systemic	Intersections	
SH 24 - 1 - 1/1	Lighting	Intersection lighting	1	Intersections	\$118655	\$118655	HSIP (23 U.S.C. 148)	Multiple/Varies	Multiple/Varies	0		State Highway Agency	Systemic	Intersections	
SH 37 - 1	Lighting	Intersection lighting	1	Intersections	\$42995	\$42995	HSIP (23 U.S.C. 148)	Multiple/Varies	Multiple/Varies	0		State Highway Agency	Systemic	Intersections	
US 271 - 1	Lighting	Intersection lighting	1	Intersections	\$49250	\$49250	HSIP (23 U.S.C. 148)	Multiple/Varies	Multiple/Varies	0		State Highway Agency	Systemic	Intersections	

2023 Texas Highway Safety Improvement Program

PROJECT NAME	IMPROVEMENT CATEGORY	SUBCATEGORY	OUTPUTS	OUTPUT TYPE	HSIP PROJECT COST(\$)	TOTAL PROJECT COST(\$)	FUNDING CATEGORY	LAND USE/AREA TYPE	FUNCTIONAL CLASSIFICATION	AADT	SPEED	OWNERSHIP	METHOD FOR SITE SELECTION	SHSP EMPHASIS AREA	SHSP STRATEGY
SH 78 - 2	Lighting	Intersection lighting	1	Intersections	\$31265	\$31265	HSIP (23 U.S.C. 148)	Multiple/Varies	Multiple/Varies	0		State Highway Agency	Systemic	Intersections	
SH 78 - 1	Lighting	Intersection lighting	1	Intersections	\$46540	\$46540	HSIP (23 U.S.C. 148)	Multiple/Varies	Multiple/Varies	0		State Highway Agency	Systemic	Intersections	
SH 19 - 1	Lighting	Intersection lighting	1	Intersections	\$105340	\$105340	HSIP (23 U.S.C. 148)	Multiple/Varies	Multiple/Varies	0		State Highway Agency	Systemic	Intersections	
SH 160 - 1	Lighting	Intersection lighting	1	Intersections	\$32295	\$32295	HSIP (23 U.S.C. 148)	Multiple/Varies	Multiple/Varies	0		State Highway Agency	Systemic	Intersections	
SH 121-1	Lighting	Intersection lighting	1	Intersections	\$75425	\$75425	HSIP (23 U.S.C. 148)	Multiple/Varies	Multiple/Varies	0		State Highway Agency	Systemic	Intersections	
2020-2-DAL_WHickorySt_Denton.pdf	Intersection traffic control	Modify traffic signal –other	0.2	Miles	\$259904	\$452370	HSIP (23 U.S.C. 148)	Multiple/Varies	Multiple/Varies	0		Other Local Agency	Spot	Intersections	
2020-2-DAL_WOakSt_Denton.pdf	Pedestrians and bicyclists	Pedestrian beacons	0.2	Miles	\$106641	\$219309	HSIP (23 U.S.C. 148)	Multiple/Varies	Multiple/Varies	0		Other Local Agency	Spot	Pedestrians	
2020-2-ELP_BU0054A_4-TAR	Lighting	Continuous roadway lighting	2.008	Miles	\$1130252	\$1134128	HSIP (23 U.S.C. 148)	Multiple/Varies	Multiple/Varies	0		State Highway Agency	Spot	Roadway Departure	
2020-2-ELP_FM0659_1-TAR	Intersection traffic control	Modify traffic signal –other	0.2	Miles	\$261194	\$261194	HSIP (23 U.S.C. 148)	Multiple/Varies	Multiple/Varies	0		State Highway Agency	Spot	Pedestrians	
2020-2-ELP_SH0020_3-TAR	Intersection traffic control	Modify traffic signal –other	0.2	Miles	\$559426	\$719426	HSIP (23 U.S.C. 148)	Multiple/Varies	Multiple/Varies	0		State Highway Agency	Spot	Intersections	
2020-2-ELP_SH0020_4-TAR	Intersection geometry	Add/modify auxiliary lanes	0.2	Miles	\$26973	\$26973	HSIP (23 U.S.C. 148)	Multiple/Varies	Multiple/Varies	0		State Highway Agency	Spot	Intersections	
2020-2-ELP_SH0020_6-SYS	Shoulder treatments	Widen shoulder – paved or other (includes add shoulder)	5.423	Miles	\$3137955	\$3167955	HSIP (23 U.S.C. 148)	Multiple/Varies	Multiple/Varies	0		State Highway Agency	Systemic	Roadway Departure	
2020-2-ELP_SL0375_2-TAR	Lighting	Continuous roadway lighting	2.208	Miles	\$1709964	\$1709964	HSIP (23 U.S.C. 148)	Multiple/Varies	Multiple/Varies	0		State Highway Agency	Spot	Roadway Departure	

2023 Texas Highway Safety Improvement Program

PROJECT NAME	IMPROVEMENT CATEGORY	SUBCATEGORY	OUTPUTS	OUTPUT TYPE	HSIP PROJECT COST(\$)	TOTAL PROJECT COST(\$)	FUNDING CATEGORY	LAND USE/AREA TYPE	FUNCTIONAL CLASSIFICATION	AADT	SPEED	OWNERSHIP	METHOD FOR SITE SELECTION	SHSP EMPHASIS AREA	SHSP STRATEGY
FM 195 - 1	Lighting	Intersection lighting	1	Intersections	\$60245	\$60245	HSIP (23 U.S.C. 148)	Multiple/Varies	Multiple/Varies	0		State Highway Agency	Systemic	Intersections	
SH 11 - 1	Lighting	Intersection lighting	1	Intersections	\$33045	\$33045	HSIP (23 U.S.C. 148)	Multiple/Varies	Multiple/Varies	0		State Highway Agency	Systemic	Intersections	
FM 2221 - 2	Intersection traffic control	Intersection signing – add basic advance warning	1	Intersections	\$80576	\$120576	HSIP (23 U.S.C. 148)	Multiple/Varies	Multiple/Varies	0		State Highway Agency	Spot	Intersections	
FM 2221 -1	Intersection traffic control	Modify control – new traffic signal	1	Intersections	\$245711	\$245711	HSIP (23 U.S.C. 148)	Multiple/Varies	Multiple/Varies	0		State Highway Agency	Spot	Intersections	
SH 46; 0216-02-068; SFT	Intersection traffic control	Modify traffic signal –other	0.2	Miles	\$293416	\$302916	HSIP (23 U.S.C. 148)	Multiple/Varies	Multiple/Varies	0		State Highway Agency	Spot	Intersections	
FM 492	Intersection traffic control	Modify control – new traffic signal	1	Intersections	\$221861	\$221861	HSIP (23 U.S.C. 148)	Multiple/Varies	Multiple/Varies	0		State Highway Agency	Spot	Intersections	
Freddy Gonzalez Rd.	Intersection traffic control	Modify control – new traffic signal	1	Intersections	\$181799	\$196799	HSIP (23 U.S.C. 148)	Multiple/Varies	Multiple/Varies	0		Other Local Agency	Spot	Intersections	
SH 195 FROM BELL C/L TO WOLF RIDGE RD	Roadside	Barrier - other	12.272	Miles	\$2358911	\$2377911	HSIP (23 U.S.C. 148)	Multiple/Varies	Multiple/Varies	0		State Highway Agency	Systemic	Roadway Departure	
Mile 2 Rd. (3)	Intersection traffic control	Intersection signing – add basic advance warning	1	Intersections	\$126942	\$168942	HSIP (23 U.S.C. 148)	Multiple/Varies	Multiple/Varies	0		Other Local Agency	Spot	Intersections	
Mile 3 Rd.	Intersection traffic control	Intersection signing – add basic advance warning	1	Intersections	\$65230	\$107230	HSIP (23 U.S.C. 148)	Multiple/Varies	Multiple/Varies	0		Other Local Agency	Spot	Intersections	
Dixieland Rd.	Lighting	Continuous roadway lighting	1	Locations	\$368889	\$391889	HSIP (23 U.S.C. 148)	Multiple/Varies	Multiple/Varies	0		Other Local Agency	Systemic	Roadway Departure	
FM 1924	Intersection traffic control	Modify control – new traffic signal	1	Intersections	\$254565	\$254565	HSIP (23 U.S.C. 148)	Multiple/Varies	Multiple/Varies	0		State Highway Agency	Spot	Intersections	
FM 2220	Pedestrians and bicyclists	Medians and pedestrian refuge areas	0.689	Miles	\$809835	\$843592	HSIP (23 U.S.C. 148)	Multiple/Varies	Multiple/Varies	0		State Highway Agency	Spot	Roadway Departure	

2023 Texas Highway Safety Improvement Program

PROJECT NAME	IMPROVEMENT CATEGORY	SUBCATEGORY	OUTPUTS	OUTPUT TYPE	HSIP PROJECT COST(\$)	TOTAL PROJECT COST(\$)	FUNDING CATEGORY	LAND USE/AREA TYPE	FUNCTIONAL CLASSIFICATION	AADT	SPEED	OWNERSHIP	METHOD FOR SITE SELECTION	SHSP EMPHASIS AREA	SHSP STRATEGY
FM 2812	Intersection geometry	Add/modify auxiliary lanes	4.769999999999999	Intersections	\$0	\$0	HSIP (23 U.S.C. 148)	Multiple/Varies	Multiple/Varies	0		State Highway Agency	Spot	Intersections	
SAT_UA0090: 0025-04-051: SFT	Roadway	Roadway widening - travel lanes	1	Locations	\$2221434	\$2246434	HSIP (23 U.S.C. 148)	Multiple/Varies	Multiple/Varies	0		State Highway Agency	Spot	Intersections	
SAT_SH0027_1: 0142-04-054: SFT	Intersection traffic control	Modify traffic signal -other	0.199999999999999	Intersections	\$393524	\$393524	HSIP (23 U.S.C. 148)	Multiple/Varies	Multiple/Varies	0		State Highway Agency	Spot	Intersections	
SAT_RM0473: 0142-10-028: SFT	Intersection geometry	Add/modify auxiliary lanes	1	Intersections	\$640687	\$667287	HSIP (23 U.S.C. 148)	Multiple/Varies	Multiple/Varies	0		State Highway Agency	Spot	Intersections	
2020-2-ELP_US0062_2-TAR	Pedestrians and bicyclists	Medians and pedestrian refuge areas	0.4	Miles	\$76557	\$111557	HSIP (23 U.S.C. 148)	Multiple/Varies	Multiple/Varies	0		State Highway Agency	Spot	Roadway Departure	
2020-2-ELP_AcensionRd_El Paso County_2	Shoulder treatments	Widen shoulder - paved or other (includes add shoulder)	2.2	Miles	\$550159	\$742108	HSIP (23 U.S.C. 148)	Multiple/Varies	Multiple/Varies	0		Other Local Agency	Spot	Roadway Departure	
2020-2-ELP_DarringtonRd_Horizon_1	Lighting	Continuous roadway lighting	1.22	Miles	\$746836	\$763336	HSIP (23 U.S.C. 148)	Multiple/Varies	Multiple/Varies	0		Other Local Agency	Spot	Roadway Departure	
SAT_IH0410_2_CSJ_2_of_2	Pedestrians and bicyclists	Pedestrians and bicyclists - other	1.26	Miles	\$284484	\$322484	HSIP (23 U.S.C. 148)	Multiple/Varies	Multiple/Varies	0		State Highway Agency	Systemic	Pedestrians	
SAT_IH0410_2_CSJ_1_of_2	Pedestrians and bicyclists	Pedestrians and bicyclists - other	0.155	Miles	\$31196	\$31196	HSIP (23 U.S.C. 148)	Multiple/Varies	Multiple/Varies	0		State Highway Agency	Systemic	Pedestrians	
SAT_FM3351: 3212-04-012: SFT	Roadway	Roadway widening - travel lanes	1	Locations	\$1221953	\$1221953	HSIP (23 U.S.C. 148)	Multiple/Varies	Multiple/Varies	0		State Highway Agency	Spot	Intersections	
SHERWOOD WAY IMPROVE TRAFFIC & PED SIGNA	Intersection traffic control	Modify traffic signal -other	1	Intersections	\$525059	\$527029	HSIP (23 U.S.C. 148)	Multiple/Varies	Multiple/Varies	0		State Highway Agency	Spot	Intersections	
SH31,FM2661,HSIP2023	Intersection geometry	Add/modify auxiliary lanes	1	Intersections	\$1235384	\$1249884	HSIP (23 U.S.C. 148)	Multiple/Varies	Multiple/Varies	0		State Highway Agency	Spot	Roadway Departure	
SH 198, @CR2534, HSIP 2023	Roadway signs and traffic control	Curve-related warning signs and flashers	1	Locations	\$46050	\$46550	HSIP (23 U.S.C. 148)	Multiple/Varies	Multiple/Varies	0		State Highway Agency	Systemic	Roadway Departure	

2023 Texas Highway Safety Improvement Program

PROJECT NAME	IMPROVEMENT CATEGORY	SUBCATEGORY	OUTPUTS	OUTPUT TYPE	HSIP PROJECT COST(\$)	TOTAL PROJECT COST(\$)	FUNDING CATEGORY	LAND USE/AREA TYPE	FUNCTIONAL CLASSIFICATION	AADT	SPEED	OWNERSHIP	METHOD FOR SITE SELECTION	SHSP EMPHASIS AREA	SHSP STRATEGY
VA, HSIP 2023	Intersection traffic control	Modify traffic signal –other	33	Intersections	\$932150	\$936150	HSIP (23 U.S.C. 148)	Multiple/Varies	Multiple/Varies	0		State Highway Agency	Systemic	Intersections	
FM346 at FM 344, 2023 HSIP	Roadway signs and traffic control	Curve-related warning signs and flashers	1	Locations	\$188400	\$188900	HSIP (23 U.S.C. 148)	Multiple/Varies	Multiple/Varies	0		State Highway Agency	Spot	Roadway Departure	
2020-2-ELP_AcensionRd_EI Paso County_1	Roadway signs and traffic control	Curve-related warning signs and flashers	7.75	Miles	\$133472	\$133472	HSIP (23 U.S.C. 148)	Multiple/Varies	Multiple/Varies	0		Other Local Agency	Spot	Roadway Departure	
2020-2-FTW_BU0287	Intersection traffic control	Modify traffic signal –other	0.2	Miles	\$351354	\$821667	HSIP (23 U.S.C. 148)	Multiple/Varies	Multiple/Varies	0		State Highway Agency	Spot	Intersections	
IOI SH36 Rural Intersection Upgrade	Intersection traffic control	Intersection signing – add basic advance warning	1	Intersections	\$88945	\$96445	HSIP (23 U.S.C. 148)	Multiple/Varies	Multiple/Varies	0		State Highway Agency	Systemic	Intersections	
IOI SH 36 Rural Intersection Upgrade	Intersection traffic control	Intersection signing – add basic advance warning	1	Intersections	\$12475	\$12475	HSIP (23 U.S.C. 148)	Multiple/Varies	Multiple/Varies	0		State Highway Agency	Systemic	Intersections	
IOI FM1860 Rural Intersection Upgrade	Intersection traffic control	Intersection signing – add basic advance warning	1	Intersections	\$36550	\$36550	HSIP (23 U.S.C. 148)	Multiple/Varies	Multiple/Varies	0		State Highway Agency	Systemic	Intersections	
CS Hillcrest @ McArthur Drive	Intersection traffic control	Modify traffic signal –other	1	Intersections	\$258695	\$260695	HSIP (23 U.S.C. 148)	Multiple/Varies	Multiple/Varies	0		Other Local Agency	Systemic	Intersections	
SFT W Central Ave @ S 1st Street	Pedestrians and bicyclists	Rapid Rectangular Flashing Beacons (RRFB)	1	Intersections	\$76270	\$85987	HSIP (23 U.S.C. 148)	Multiple/Varies	Multiple/Varies	0		Other Local Agency	Systemic	Pedestrians	
Rehab EX RD CR 3620 BRAZOS RIVER	Shoulder treatments	Widen shoulder – paved or other (includes add shoulder)	4.3409999999999999	Miles	\$4564915	\$8871170	VRU Safety Special Rule (23 U.S.C. 148(g)(3))	Multiple/Varies	Multiple/Varies	0		State Highway Agency	Spot	Roadway Departure	
SFT FM3051 Install Cable Med Barrier	Roadside	Barrier - other	1	Locations	\$1210047	\$1225047	HSIP (23 U.S.C. 148)	Multiple/Varies	Multiple/Varies	0		State Highway Agency	Systemic	Roadway Departure	

2023 Texas Highway Safety Improvement Program

PROJECT NAME	IMPROVEMENT CATEGORY	SUBCATEGORY	OUTPUTS	OUTPUT TYPE	HSIP PROJECT COST(\$)	TOTAL PROJECT COST(\$)	FUNDING CATEGORY	LAND USE/AREA TYPE	FUNCTIONAL CLASSIFICATION	AADT	SPEED	OWNERSHIP	METHOD FOR SITE SELECTION	SHSP EMPHASIS AREA	SHSP STRATEGY
IOI FM2484 Rural Intersection Upgrade	Intersection traffic control	Intersection signing – add basic advance warning	1	Intersections	\$24320	\$24320	HSIP (23 U.S.C. 148)	Multiple/Varies	Multiple/Varies	0		State Highway Agency	Systemic	Intersections	
2020-2-FTW_SH0144	Intersection traffic control	Intersection signing – add basic advance warning	7.2	Miles	\$148929	\$153929	HSIP (23 U.S.C. 148)	Multiple/Varies	Multiple/Varies	0		State Highway Agency	Spot	Intersections	
2020-2-FTW_SH0121_2	Roadside	Roadside - other	5.125	Miles	\$4933446	\$4933446	HSIP (23 U.S.C. 148)	Multiple/Varies	Multiple/Varies	0		State Highway Agency	Spot	Roadway Departure	
2020-2-FTW_SH0121	Advanced technology and ITS	Wrong-way Driving Detection System	0.116	Miles	\$104119	\$250160	HSIP (23 U.S.C. 148)	Multiple/Varies	Multiple/Varies	0		State Highway Agency	Spot	Older Drivers	
2020-2-FTW_SH0183_1	Intersection traffic control	Modify traffic signal –other	0.2	Miles	\$482213	\$964326	HSIP (23 U.S.C. 148)	Multiple/Varies	Multiple/Varies	0		State Highway Agency	Spot	Intersections	
US 290 HSIP 2022	Roadside	Barrier - other	1	Locations	\$2346794	\$2359294	HSIP (23 U.S.C. 148)	Multiple/Varies	Multiple/Varies	0		State Highway Agency	Systemic	Roadway Departure	
SH 36 HSIP 2022	Intersection traffic control	Modify control – new traffic signal	1	Intersections	\$443415	\$446415	HSIP (23 U.S.C. 148)	Multiple/Varies	Multiple/Varies	0		State Highway Agency	Spot	Intersections	
SH 71 HSIP 2022	Roadside	Barrier - other	1	Locations	\$1796345	\$1796345	HSIP (23 U.S.C. 148)	Multiple/Varies	Multiple/Varies	0		State Highway Agency	Systemic	Roadway Departure	
FM 457 HSIP 2022	Shoulder treatments	Widen shoulder – paved or other (includes add shoulder)	1	Locations	\$3978936	\$3980436	VRU Safety Special Rule (23 U.S.C. 148(g)(3))	Multiple/Varies	Multiple/Varies	0		State Highway Agency	Spot	Roadway Departure	
2020-2-FTW_SH0183_3	Intersection traffic control	Modify traffic signal –other	0.2	Miles	\$255319	\$554941	HSIP (23 U.S.C. 148)	Multiple/Varies	Multiple/Varies	0		State Highway Agency	Spot	Intersections	
2020-2-FTW_US0067	Roadside	Barrier - other	12.327	Miles	\$1284729	\$1323614	HSIP (23 U.S.C. 148)	Multiple/Varies	Multiple/Varies	0		State Highway Agency	Spot	Roadway Departure	
2020-2-FTW_US0287	Lighting	Continuous roadway lighting	2	Miles	\$770000	\$773500	HSIP (23 U.S.C. 148)	Multiple/Varies	Multiple/Varies	0		State Highway Agency	Spot	Roadway Departure	

2023 Texas Highway Safety Improvement Program

PROJECT NAME	IMPROVEMENT CATEGORY	SUBCATEGORY	OUTPUTS	OUTPUT TYPE	HSIP PROJECT COST(\$)	TOTAL PROJECT COST(\$)	FUNDING CATEGORY	LAND USE/AREA TYPE	FUNCTIONAL CLASSIFICATION	AADT	SPEED	OWNERSHIP	METHOD FOR SITE SELECTION	SHSP EMPHASIS AREA	SHSP STRATEGY
2020-2-FTW_US0380_S	Roadside	Barrier - other	22.472	Miles	\$2632769	\$5064958	HSIP (23 U.S.C. 148)	Multiple/Varies	Multiple/Varies	0		State Highway Agency	Systemic	Roadway Departure	
2020-2-FTW_MitchellBlvd_FortWorth	Intersection traffic control	Modify traffic signal –other	1	Intersections	\$395445	\$756275	HSIP (23 U.S.C. 148)	Multiple/Varies	Multiple/Varies	0		Other Local Agency	Spot	Intersections	
2020-2-FTW_RameyAve_FORTWORTH	Intersection traffic control	Modify traffic signal –other	1	Intersections	\$372361	\$580876	HSIP (23 U.S.C. 148)	Multiple/Varies	Multiple/Varies	0		Other Local Agency	Spot	Intersections	
2020-2-FTW_WRisingerRd_FortWorth	Intersection traffic control	Modify control – new traffic signal	1	Intersections	\$516863	\$983739	HSIP (23 U.S.C. 148)	Multiple/Varies	Multiple/Varies	0		Other Local Agency	Spot	Intersections	
2020-2-FTW_WilliamDTateAve_Grapevine	Pedestrians and bicyclists	Medians and pedestrian refuge areas	0.352	Miles	\$252804	\$511265	HSIP (23 U.S.C. 148)	Multiple/Varies	Multiple/Varies	0		Other Local Agency	Spot	Roadway Departure	
2020-2-HOU_Beechnut&Maplecrest_Houston	Pedestrians and bicyclists	Pedestrian beacons	0.02	Miles	\$47970	\$336149	HSIP (23 U.S.C. 148)	Multiple/Varies	Multiple/Varies	0		Other Local Agency	Spot	Pedestrians	
2020-2-HOU_BS288	Intersection traffic control	Modify traffic signal timing – signal coordination	4.9	Miles	\$894065	\$911065	HSIP (23 U.S.C. 148)	Multiple/Varies	Multiple/Varies	0		State Highway Agency	Spot	Intersections	
2020-2-HOU_FM0521_1	Intersection geometry	Add/modify auxiliary lanes	0.25	Miles	\$532257	\$539352	HSIP (23 U.S.C. 148)	Multiple/Varies	Multiple/Varies	0		State Highway Agency	Spot	Intersections	
2020-2-HOU_FM0529	Intersection traffic control	Modify control – new traffic signal	0.2	Miles	\$380010	\$380010	HSIP (23 U.S.C. 148)	Multiple/Varies	Multiple/Varies	0		State Highway Agency	Spot	Intersections	
2020-2-HOU_FM0646_1	Intersection traffic control	Modify traffic signal –other	0.2	Miles	\$145241	\$145241	HSIP (23 U.S.C. 148)	Multiple/Varies	Multiple/Varies	0		State Highway Agency	Spot	Intersections	
2020-2-HOU_FM0646_2	Shoulder treatments	Widen shoulder – paved or other (includes add shoulder)	3.7	Miles	\$7307285	\$13706484	VRU Safety Special Rule (23 U.S.C. 148(g)(3))	Multiple/Varies	Multiple/Varies	0		State Highway Agency	Spot	Roadway Departure	
2020-2-HOU_FM1314	Lighting	Continuous roadway lighting	4.6	Miles	\$2022486	\$2042486	HSIP (23 U.S.C. 148)	Multiple/Varies	Multiple/Varies	0		State Highway Agency	Spot	Roadway Departure	

2023 Texas Highway Safety Improvement Program

PROJECT NAME	IMPROVEMENT CATEGORY	SUBCATEGORY	OUTPUTS	OUTPUT TYPE	HSIP PROJECT COST(\$)	TOTAL PROJECT COST(\$)	FUNDING CATEGORY	LAND USE/AREA TYPE	FUNCTIONAL CLASSIFICATION	AADT	SPEED	OWNERSHIP	METHOD FOR SITE SELECTION	SHSP EMPHASIS AREA	SHSP STRATEGY
2020-2-HOU_FM1765	Pedestrians and bicyclists	Install sidewalk	0.8	Miles	\$1425059	\$1445059	HSIP (23 U.S.C. 148)	Multiple/Varies	Multiple/Varies	0		State Highway Agency	Spot	Pedestrians	
2020-2-HOU_FM1960_2	Intersection traffic control	Modify traffic signal –other	0.2	Miles	\$286666	\$286666	HSIP (23 U.S.C. 148)	Multiple/Varies	Multiple/Varies	0		State Highway Agency	Spot	Intersections	
2020-2-HOU_FM1960_3	Intersection traffic control	Modify traffic signal –other	0.2	Miles	\$377741	\$377741	HSIP (23 U.S.C. 148)	Multiple/Varies	Multiple/Varies	0		State Highway Agency	Spot	Intersections	
2020-2-HOU_FM1960_4	Pedestrians and bicyclists	Medians and pedestrian refuge areas	7.302	Miles	\$3176088	\$4101088	HSIP (23 U.S.C. 148)	Multiple/Varies	Multiple/Varies	0		State Highway Agency	Spot	Roadway Departure	
2020-2-HOU_FM1960_5	Pedestrians and bicyclists	Medians and pedestrian refuge areas	2.166	Miles	\$737157	\$737157	HSIP (23 U.S.C. 148)	Multiple/Varies	Multiple/Varies	0		State Highway Agency	Spot	Roadway Departure	
2020-2-HOU_FM2004	Intersection traffic control	Modify traffic signal –other	0.2	Miles	\$154562	\$154562	HSIP (23 U.S.C. 148)	Multiple/Varies	Multiple/Varies	0		State Highway Agency	Spot	Intersections	
2020-2-HOU_FM528	Intersection traffic control	Modify traffic signal timing – signal coordination	2.5	Miles	\$411386	\$411386	HSIP (23 U.S.C. 148)	Multiple/Varies	Multiple/Varies	0		State Highway Agency	Spot	Intersections	
2020-2-HOU_IH010_1	Roadway signs and traffic control	Curve-related warning signs and flashers	0.902	Miles	\$66475	\$66475	HSIP (23 U.S.C. 148)	Multiple/Varies	Multiple/Varies	0		State Highway Agency	Systemic	Roadway Departure	
2020-2-HOU_IH010_4	Intersection traffic control	Intersection signing – add basic advance warning	1.1	Miles	\$12174	\$12174	HSIP (23 U.S.C. 148)	Multiple/Varies	Multiple/Varies	0		State Highway Agency	Spot	Intersections	
2020-2-HOU_IH069_2	Roadway signs and traffic control	Curve-related warning signs and flashers	0.738	Miles	\$117826	\$121826	HSIP (23 U.S.C. 148)	Multiple/Varies	Multiple/Varies	0		State Highway Agency	Systemic	Roadway Departure	
2020-2-HOU_IH610	Intersection traffic control	Modify traffic signal –other	0.2	Miles	\$649661	\$649661	HSIP (23 U.S.C. 148)	Multiple/Varies	Multiple/Varies	0		State Highway Agency	Spot	Intersections	
2020-2-HOU_IrvingtonBlvd_Houston	Intersection traffic control	Modify control – Modern Roundabout	0.132	Miles	\$200433	\$395093	HSIP (23 U.S.C. 148)	Multiple/Varies	Multiple/Varies	0		Other Local Agency	Spot	Intersections	
2020-2-HOU_Memorial&AddicksHowell_Houston	Intersection geometry	Add/modify auxiliary lanes	0.07	Miles	\$86002	\$235691	HSIP (23 U.S.C. 148)	Multiple/Varies	Multiple/Varies	0		Other Local Agency	Spot	Intersections	

2023 Texas Highway Safety Improvement Program

PROJECT NAME	IMPROVEMENT CATEGORY	SUBCATEGORY	OUTPUTS	OUTPUT TYPE	HSIP PROJECT COST(\$)	TOTAL PROJECT COST(\$)	FUNDING CATEGORY	LAND USE/AREA TYPE	FUNCTIONAL CLASSIFICATION	AADT	SPEED	OWNERSHIP	METHOD FOR SITE SELECTION	SHSP EMPHASIS AREA	SHSP STRATEGY
2020-2-HOU_RenwickDr_Houston	Intersection traffic control	Modify control – Modern Roundabout	0.182	Miles	\$322245	\$406977	HSIP (23 U.S.C. 148)	Multiple/Varies	Multiple/Varies	0		Other Local Agency	Spot	Intersections	
2020-2-HOU_RichmondAve&HayesRd_Houston	Intersection traffic control	Modify control – new traffic signal	0.011	Miles	\$569842	\$613165	HSIP (23 U.S.C. 148)	Multiple/Varies	Multiple/Varies	0		Other Local Agency	Spot	Intersections	
2020-2-HOU_SH0035_1	Intersection traffic control	Modify traffic signal –other	0.2	Miles	\$685717	\$701717	HSIP (23 U.S.C. 148)	Multiple/Varies	Multiple/Varies	0		State Highway Agency	Spot	Intersections	
2020-2-HOU_SH0035_2	Intersection traffic control	Modify control – new traffic signal	0.2	Miles	\$162412	\$170162	HSIP (23 U.S.C. 148)	Multiple/Varies	Multiple/Varies	0		State Highway Agency	Spot	Intersections	
2020-2-HOU_SL0008_1	Intersection traffic control	Modify traffic signal timing – signal coordination	1.2	Miles	\$7585	\$7585	HSIP (23 U.S.C. 148)	Multiple/Varies	Multiple/Varies	0		State Highway Agency	Spot	Intersections	
2020-2-HOU_SL0008_2	Intersection traffic control	Modify traffic signal timing – signal coordination	1.3	Miles	\$6271	\$6271	HSIP (23 U.S.C. 148)	Multiple/Varies	Multiple/Varies	0		State Highway Agency	Spot	Intersections	
LBB_SH0194_1	Roadway delineation	Roadway delineation - other	15.103	Miles	\$168302	\$178302	HSIP (23 U.S.C. 148)	Multiple/Varies	Multiple/Varies	0		State Highway Agency	Spot	Roadway Departure	
2020-2-HOU_Smith&Tuam_Houston	Intersection traffic control	Modify control – new traffic signal	0.02	Miles	\$346235	\$440582	HSIP (23 U.S.C. 148)	Multiple/Varies	Multiple/Varies	0		Other Local Agency	Spot	Intersections	
2020-2-HOU_SS0261_1	Intersection traffic control	Modify traffic signal –other	0.2	Miles	\$507603	\$522603	HSIP (23 U.S.C. 148)	Multiple/Varies	Multiple/Varies	0		State Highway Agency	Spot	Intersections	
PHR_SH0048_1	Roadside	Barrier - other	0.7889999999999998	Miles	\$276481	\$301481	HSIP (23 U.S.C. 148)	Multiple/Varies	Multiple/Varies	0		State Highway Agency	Systemic	Roadway Departure	
PHR_IH0069C	Roadside	Barrier - other	0.2899999999999999	Miles	\$107309	\$107309	HSIP (23 U.S.C. 148)	Multiple/Varies	Multiple/Varies	0		State Highway Agency	Systemic	Roadway Departure	
2020-2-HOU_Systemic_3	Roadside	Barrier - other	8.089	Miles	\$1561387	\$1581387	HSIP (23 U.S.C. 148)	Multiple/Varies	Multiple/Varies	0		State Highway Agency	Systemic	Roadway Departure	
2020-2-HOU_WTidwell&Guhn_Houston	Intersection geometry	Add/modify auxiliary lanes	0.05	Miles	\$106315	\$229470	HSIP (23 U.S.C. 148)	Multiple/Varies	Multiple/Varies	0		Other Local Agency	Spot	Intersections	

2023 Texas Highway Safety Improvement Program

PROJECT NAME	IMPROVEMENT CATEGORY	SUBCATEGORY	OUTPUTS	OUTPUT TYPE	HSIP PROJECT COST(\$)	TOTAL PROJECT COST(\$)	FUNDING CATEGORY	LAND USE/AREA TYPE	FUNCTIONAL CLASSIFICATION	AADT	SPEED	OWNERSHIP	METHOD FOR SITE SELECTION	SHSP EMPHASIS AREA	SHSP STRATEGY
2020-2-HOU_YaleSt&CenterSt_Houston	Intersection traffic control	Modify traffic signal - other	0.015	Miles	\$576751	\$576751	HSIP (23 U.S.C. 148)	Multiple/Varies	Multiple/Varies	0		Other Local Agency	Spot	Intersections	
2020-2-LBB_FM1585_1	Roadway delineation	Roadway delineation - other	19.557	Miles	\$215067	\$215067	HSIP (23 U.S.C. 148)	Multiple/Varies	Multiple/Varies	0		State Highway Agency	Spot	Roadway Departure	
2020-2-LBB_IH0027_2	Roadway signs and traffic control	Curve-related warning signs and flashers	0.672	Miles	\$125300	\$125300	HSIP (23 U.S.C. 148)	Multiple/Varies	Multiple/Varies	0		State Highway Agency	Spot	Roadway Departure	
2020-2-LBB_SL0289_1	Roadside	Barrier - other	11.01	Miles	\$2477822	\$2552822	HSIP (23 U.S.C. 148)	Multiple/Varies	Multiple/Varies	0		State Highway Agency	Systemic	Roadway Departure	
2020-2-LBB_US0070	Lighting	Intersection lighting	0.4	Miles	\$305700	\$354700	HSIP (23 U.S.C. 148)	Multiple/Varies	Multiple/Varies	0		State Highway Agency	Spot	Intersections	
ABL_P2_US84_FY23MB	Roadside	Barrier - other	5.893	Miles	\$3730907	\$3730907	HSIP (23 U.S.C. 148)	Multiple/Varies	Multiple/Varies	0		State Highway Agency	Systemic	Roadway Departure	
2020-2-LBB_US0084_2	Lighting	Intersection lighting	0.4	Miles	\$105400	\$105400	HSIP (23 U.S.C. 148)	Multiple/Varies	Multiple/Varies	0		State Highway Agency	Spot	Intersections	
2020-2-LBB_US0084_3	Lighting	Intersection lighting	0.4	Miles	\$151250	\$151250	HSIP (23 U.S.C. 148)	Multiple/Varies	Multiple/Varies	0		State Highway Agency	Spot	Intersections	
ABL_P5_US84_FY23MB	Roadside	Barrier - other	18.199	Miles	\$3355147	\$3370147	HSIP (23 U.S.C. 148)	Multiple/Varies	Multiple/Varies	0		State Highway Agency	Systemic	Roadway Departure	
2020-2-LFK_FM1878_2	Roadway delineation	Roadway delineation - other	2.315	Miles	\$4866131	\$4870131	HSIP (23 U.S.C. 148)	Multiple/Varies	Multiple/Varies	0		State Highway Agency	Systemic	Roadway Departure	
ABL_P4_US84_FY23MB	Roadside	Barrier - other	23.389	Miles	\$3615447	\$3615447	HSIP (23 U.S.C. 148)	Multiple/Varies	Multiple/Varies	0		State Highway Agency	Systemic	Roadway Departure	
2020-2-LFK_FM2680	Roadside	Roadside - other	1.158	Miles	\$2660027	\$2663027	HSIP (23 U.S.C. 148)	Multiple/Varies	Multiple/Varies	0		State Highway Agency	Spot	Roadway Departure	
ABL_P7_US87_FY23MB	Roadside	Barrier - other	5.4060000000000001	Miles	\$836953	\$836953	HSIP (23 U.S.C. 148)	Multiple/Varies	Multiple/Varies	0		State Highway Agency	Systemic	Roadway Departure	

2023 Texas Highway Safety Improvement Program

PROJECT NAME	IMPROVEMENT CATEGORY	SUBCATEGORY	OUTPUTS	OUTPUT TYPE	HSIP PROJECT COST(\$)	TOTAL PROJECT COST(\$)	FUNDING CATEGORY	LAND USE/AREA TYPE	FUNCTIONAL CLASSIFICATION	AADT	SPEED	OWNERSHIP	METHOD FOR SITE SELECTION	SHSP EMPHASIS AREA	SHSP STRATEGY
BU 69-D Signals	Pedestrians and bicyclists	Pedestrian signal	0.2	Miles	\$86196	\$87196	HSIP (23 U.S.C. 148)	Multiple/Varies	Multiple/Varies	0		State Highway Agency	Spot	Pedestrians	
2020-2-LFK_FM2923	Roadside	Roadside - other	1.56	Miles	\$1771725	\$1774725	HSIP (23 U.S.C. 148)	Multiple/Varies	Multiple/Varies	0		State Highway Agency	Systemic	Roadway Departure	
2020-2-LRD_FM1021	Intersection traffic control	Modify traffic signal –other	0.2	Miles	\$112917	\$112917	HSIP (23 U.S.C. 148)	Multiple/Varies	Multiple/Varies	0		State Highway Agency	Spot	Intersections	
2020-2-LRD_FM2644	Shoulder treatments	Widen shoulder – paved or other (includes add shoulder)	5	Miles	\$2696126	\$2718330	VRU Safety Special Rule (23 U.S.C. 148(g)(3))	Multiple/Varies	Multiple/Varies	0		State Highway Agency	Systemic	Roadway Departure	
2020-2-LRD_US0057	Intersection traffic control	Modify traffic signal timing – signal coordination	0.502	Miles	\$81135	\$96135	HSIP (23 U.S.C. 148)	Multiple/Varies	Multiple/Varies	0		State Highway Agency	Spot	Intersections	
2020-2-LRD_US0083_1	Intersection traffic control	Modify traffic signal –other	0.2	Miles	\$73509	\$187119	HSIP (23 U.S.C. 148)	Multiple/Varies	Multiple/Varies	0		State Highway Agency	Spot	Intersections	
2020-2-LRD_US0083_3	Intersection traffic control	Modify traffic signal –other	0.2	Miles	\$60199	\$78199	HSIP (23 U.S.C. 148)	Multiple/Varies	Multiple/Varies	0		State Highway Agency	Spot	Intersections	
2020-2-LRD_US0083_4	Intersection traffic control	Modify traffic signal –other	0.2	Miles	\$77281	\$101281	HSIP (23 U.S.C. 148)	Multiple/Varies	Multiple/Varies	0		State Highway Agency	Spot	Intersections	
2020-2-LRD_US0083_5	Intersection traffic control	Modify traffic signal –other	0.2	Miles	\$56031	\$80031	HSIP (23 U.S.C. 148)	Multiple/Varies	Multiple/Varies	0		State Highway Agency	Spot	Intersections	
2020-2-LRD_US0083_6	Intersection traffic control	Modify traffic signal –other	0.2	Miles	\$50952	\$74952	HSIP (23 U.S.C. 148)	Multiple/Varies	Multiple/Varies	0		State Highway Agency	Spot	Intersections	
2020-2-LRD_US0090	Intersection traffic control	Intersection signing – add basic advance warning	0.2	Miles	\$52491	\$95094	HSIP (23 U.S.C. 148)	Multiple/Varies	Multiple/Varies	0		State Highway Agency	Spot	Intersections	
2020-2-LRD_US0277	Lighting	Continuous roadway lighting	2.2	Miles	\$596495	\$596495	HSIP (23 U.S.C. 148)	Multiple/Varies	Multiple/Varies	0		State Highway Agency	Spot	Roadway Departure	

2023 Texas Highway Safety Improvement Program

PROJECT NAME	IMPROVEMENT CATEGORY	SUBCATEGORY	OUTPUTS	OUTPUT TYPE	HSIP PROJECT COST(\$)	TOTAL PROJECT COST(\$)	FUNDING CATEGORY	LAND USE/AREA TYPE	FUNCTIONAL CLASSIFICATION	AADT	SPEED	OWNERSHIP	METHOD FOR SITE SELECTION	SHSP EMPHASIS AREA	SHSP STRATEGY
2020-2-LRD_US0083	Intersection traffic control	Modify control – new traffic signal	0.4	Miles	\$354100	\$378100	HSIP (23 U.S.C. 148)	Multiple/Varies	Multiple/Varies	0		State Highway Agency	Spot	Intersections	
2020-2-ODA_FM2119_1	Intersection traffic control	Modify control – new traffic signal	0.2000000000000003	Miles	\$2057939	\$2057939	HSIP (23 U.S.C. 148)	Multiple/Varies	Multiple/Varies	0		State Highway Agency	Spot	Intersections	
2020HSIP_SH115_ATSH128	Intersection traffic control	Modify traffic signal –other	0.4000000000000006	Miles	\$57038	\$57038	HSIP (23 U.S.C. 148)	Multiple/Varies	Multiple/Varies	0		State Highway Agency	Spot	Intersections	
SAT_IH0010	Intersection traffic control	Modify traffic signal –other	21.825999999999999	Miles	\$491128	\$592128	HSIP (23 U.S.C. 148)	Multiple/Varies	Multiple/Varies	0		State Highway Agency	Systemic	Intersections	
FM434/3400 Corridor-1/3	Intersection geometry	Add/modify auxiliary lanes	1	Locations	\$5147948	\$5157948	HSIP (23 U.S.C. 148)	Multiple/Varies	Multiple/Varies	0		State Highway Agency	Spot	Roadway Departure	
2020-2-ODA_SH0176_1	Lighting	Intersection lighting	0.39999999999999991	Miles	\$2555865	\$2662865	HSIP (23 U.S.C. 148)	Multiple/Varies	Multiple/Varies	0		State Highway Agency	Spot	Intersections	
2020-2-PAR_FM0900_1	Shoulder treatments	Widen shoulder – paved or other (includes add shoulder)	4.569	Miles	\$3356595	\$3445117	HSIP (23 U.S.C. 148)	Multiple/Varies	Multiple/Varies	0		State Highway Agency	Spot	Roadway Departure	
2020-2-PAR_FM1507	Pedestrians and bicyclists	Install sidewalk	1.977	Miles	\$1480238	\$1530514	HSIP (23 U.S.C. 148)	Multiple/Varies	Multiple/Varies	0		State Highway Agency	Systemic	Pedestrians	
2020-2-PAR_FM2101	Pedestrians and bicyclists	Pedestrians and bicyclists – other	0.353	Miles	\$6000	\$11600	HSIP (23 U.S.C. 148)	Multiple/Varies	Multiple/Varies	0		State Highway Agency	Systemic	Pedestrians	
2020-2-PAR_FM2946	Shoulder treatments	Widen shoulder – paved or other (includes add shoulder)	2.012	Miles	\$1614607	\$1661643	HSIP (23 U.S.C. 148)	Multiple/Varies	Multiple/Varies	0		State Highway Agency	Systemic	Roadway Departure	
2020-2-PAR_SH0078_1	Roadside	Roadside - other	10.416	Miles	\$2680198	\$2753956	HSIP (23 U.S.C. 148)	Multiple/Varies	Multiple/Varies	0		State Highway Agency	Spot	Roadway Departure	
2020-2-PAR_US0069_1	Intersection traffic control	Modify control – new traffic signal	0.2	Miles	\$297914	\$305414	HSIP (23 U.S.C. 148)	Multiple/Varies	Multiple/Varies	0		State Highway Agency	Spot	Intersections	

2023 Texas Highway Safety Improvement Program

PROJECT NAME	IMPROVEMENT CATEGORY	SUBCATEGORY	OUTPUTS	OUTPUT TYPE	HSIP PROJECT COST(\$)	TOTAL PROJECT COST(\$)	FUNDING CATEGORY	LAND USE/AREA TYPE	FUNCTIONAL CLASSIFICATION	AADT	SPEED	OWNERSHIP	METHOD FOR SITE SELECTION	SHSP EMPHASIS AREA	SHSP STRATEGY
2020-2-PAR_SH0082_3	Roadside	Roadside - other	19.127	Miles	\$1549100	\$1549100	HSIP (23 U.S.C. 148)	Multiple/Varies	Multiple/Varies	0		State Highway Agency	Spot	Roadway Departure	
FM434/3400 Corridor-2/3	Intersection geometry	Add/modify auxiliary lanes	1	Locations	\$573277	\$573277	HSIP (23 U.S.C. 148)	Multiple/Varies	Multiple/Varies	0		State Highway Agency	Systemic	Intersections	
2020-2-PAR_US0377_1	Intersection traffic control	Modify traffic signal –other	0.2	Miles	\$56656	\$58556	HSIP (23 U.S.C. 148)	Multiple/Varies	Multiple/Varies	0		State Highway Agency	Spot	Intersections	
2020-2-PAR_RoyWarrenPkwy_Greenville	Roadway signs and traffic control	Curve-related warning signs and flashers	0.2	Miles	\$70332	\$74000	HSIP (23 U.S.C. 148)	Multiple/Varies	Multiple/Varies	0		Other Local Agency	Spot	Roadway Departure	
2020-2-PHR_FM1419	Intersection traffic control	Modify control – new traffic signal	0.2	Miles	\$267285	\$287285	HSIP (23 U.S.C. 148)	Multiple/Varies	Multiple/Varies	0		State Highway Agency	Spot	Intersections	
2020-2-PHR_FM1425	Shoulder treatments	Widen shoulder – paved or other (includes add shoulder)	2.84	Miles	\$3917295	\$3917295	VRU Safety Special Rule (23 U.S.C. 148(g)(3))	Multiple/Varies	Multiple/Varies	0		State Highway Agency	Spot	Roadway Departure	
2020-2-PHR_FM1847	Intersection traffic control	Modify control – new traffic signal	0.2	Miles	\$291237	\$295737	HSIP (23 U.S.C. 148)	Multiple/Varies	Multiple/Varies	0		State Highway Agency	Spot	Intersections	
2020-2-PHR_FM1925	Intersection traffic control	Modify control – new traffic signal	0.2	Miles	\$346822	\$391822	HSIP (23 U.S.C. 148)	Multiple/Varies	Multiple/Varies	0		State Highway Agency	Spot	Intersections	
FM434/3400 Corridor-3/3	Intersection traffic control	Modify traffic signal –other	0.2	Miles	\$566825	\$817476	HSIP (23 U.S.C. 148)	Multiple/Varies	Multiple/Varies	0		State Highway Agency	Spot	Intersections	
2020-2-PHR_FM0490	Shoulder treatments	Widen shoulder – paved or other (includes add shoulder)	3.223	Miles	\$3405894	\$4020780	VRU Safety Special Rule (23 U.S.C. 148(g)(3))	Multiple/Varies	Multiple/Varies	0		State Highway Agency	Systemic	Roadway Departure	
Longview_at_Belmont_roundabout	Intersection traffic control	Modify control – Modern Roundabout	70.10224	Miles	\$496353	\$546788	HSIP (23 U.S.C. 148)	Multiple/Varies	Multiple/Varies	0		Other Local Agency	Spot	Intersections	
2020-2-PHR_US0281	Intersection traffic control	Modify control – new traffic signal	0.2	Miles	\$372165	\$372165	HSIP (23 U.S.C. 148)	Multiple/Varies	Multiple/Varies	0		State Highway Agency	Spot	Intersections	

2023 Texas Highway Safety Improvement Program

PROJECT NAME	IMPROVEMENT CATEGORY	SUBCATEGORY	OUTPUTS	OUTPUT TYPE	HSIP PROJECT COST(\$)	TOTAL PROJECT COST(\$)	FUNDING CATEGORY	LAND USE/AREA TYPE	FUNCTIONAL CLASSIFICATION	AADT	SPEED	OWNERSHIP	METHOD FOR SITE SELECTION	SHSP EMPHASIS AREA	SHSP STRATEGY
IH 40 Wheeler HSIP Median Cable Barrier	Roadside	Barrier - other	12.371	Miles	\$2303739	\$2303739	HSIP (23 U.S.C. 148)	Multiple/Varies	Multiple/Varies	0		State Highway Agency	Systemic	Roadway Departure	
US0087-2-1/1	Roadside	Barrier - other	6.349999999999999	Miles	\$1774773	\$1795773	HSIP (23 U.S.C. 148)	Multiple/Varies	Multiple/Varies	0		State Highway Agency	Spot	Roadway Departure	
FM 58_2.81 MI N OF FM 1818 to FM 1818	Roadside	Roadside - other	2.81	Miles	\$4857305	\$4857305	HSIP (23 U.S.C. 148)	Multiple/Varies	Multiple/Varies	0		State Highway Agency	Systemic	Roadway Departure	
SH 315 from FM 1970 to 0.5 mi W of FM 348	Roadway	Pavement surface - other	6.456	Miles	\$3576329	\$3576329	HSIP (23 U.S.C. 148)	Multiple/Varies	Multiple/Varies	0		State Highway Agency	Spot	Roadway Departure	
ODA IH 20-1	Roadside	Barrier - other	2.846	Miles	\$575910	\$615910	HSIP (23 U.S.C. 148)	Multiple/Varies	Multiple/Varies	0		State Highway Agency	Systemic	Roadway Departure	
ODA SH 18-1	Roadside	Barrier - other	4.678	Miles	\$1103750	\$1103750	HSIP (23 U.S.C. 148)	Multiple/Varies	Multiple/Varies	0		State Highway Agency	Systemic	Roadway Departure	
ABL_P1_SL322_FY23MB	Roadside	Barrier - other	3.42	Miles	\$2440353	\$2440353	HSIP (23 U.S.C. 148)	Multiple/Varies	Multiple/Varies	0		State Highway Agency	Systemic	Roadway Departure	
ABL_P6_US83_FY23MB	Roadside	Barrier - other	16.75	Miles	\$3628354	\$3643354	HSIP (23 U.S.C. 148)	Multiple/Varies	Multiple/Varies	0		State Highway Agency	Systemic	Roadway Departure	
ABL_P3_US83_FY23MB	Roadside	Barrier - other	2.753000000000000	Miles	\$2056618	\$2056618	HSIP (23 U.S.C. 148)	Multiple/Varies	Multiple/Varies	0		State Highway Agency	Systemic	Roadway Departure	
ABL_P8_US277_FY23MB	Roadside	Barrier - other	12.173	Miles	\$2092536	\$2092536	HSIP (23 U.S.C. 148)	Multiple/Varies	Multiple/Varies	0		State Highway Agency	Systemic	Roadway Departure	
2023 HSIP IH 40 1 - 4/4	Lighting	Continuous roadway lighting	1.061	Miles	\$1018409	\$1018409	HSIP (23 U.S.C. 148)	Multiple/Varies	Multiple/Varies	0		State Highway Agency	Systemic	Roadway Departure	
FTW_SH0199	Roadside	Barrier - other	5.604	Miles	\$1303125	\$1310625	HSIP (23 U.S.C. 148)	Multiple/Varies	Multiple/Varies	0		State Highway Agency	Systemic	Roadway Departure	
LBB_FY23_SH0114_1	Lighting	Intersection lighting	1.227	Miles	\$212450	\$212450	HSIP (23 U.S.C. 148)	Multiple/Varies	Multiple/Varies	0		State Highway Agency	Systemic	Intersections	

2023 Texas Highway Safety Improvement Program

PROJECT NAME	IMPROVEMENT CATEGORY	SUBCATEGORY	OUTPUTS	OUTPUT TYPE	HSIP PROJECT COST(\$)	TOTAL PROJECT COST(\$)	FUNDING CATEGORY	LAND USE/AREA TYPE	FUNCTIONAL CLASSIFICATION	AADT	SPEED	OWNERSHIP	METHOD FOR SITE SELECTION	SHSP EMPHASIS AREA	SHSP STRATEGY
SH 114-FM 2646	Lighting	Intersection lighting	0.2	Miles	\$104650	\$104650	HSIP (23 U.S.C. 148)	Multiple/Varies	Multiple/Varies	0		State Highway Agency	Spot	Intersections	
SH 114-S FM 168	Lighting	Intersection lighting	0.2	Miles	\$107650	\$107650	HSIP (23 U.S.C. 148)	Multiple/Varies	Multiple/Varies	0		State Highway Agency	Spot	Intersections	
SH 114-FM 2130	Lighting	Intersection lighting	0.2	Miles	\$104800	\$104800	HSIP (23 U.S.C. 148)	Multiple/Varies	Multiple/Varies	0		State Highway Agency	Spot	Intersections	
FM 400-CR 21 to US 87	Lighting	Continuous roadway lighting	0.473	Miles	\$626590	\$626590	HSIP (23 U.S.C. 148)	Multiple/Varies	Multiple/Varies	0		State Highway Agency	Spot	Intersections	
2020-2-PHR_CesarChavezRd_Hidalgo_1	Intersection traffic control	Modify traffic signal –other	0.2	Miles	\$40997	\$60997	HSIP (23 U.S.C. 148)	Multiple/Varies	Multiple/Varies	0		Other Local Agency	Spot	Intersections	
2020-2-PHR_MRd_Hidalgo	Intersection traffic control	Modify traffic signal –other	0.2	Miles	\$41634	\$41634	HSIP (23 U.S.C. 148)	Multiple/Varies	Multiple/Varies	0		Other Local Agency	Spot	Intersections	
2020-2-PHR_Mile4WRd_Hidalgo	Intersection traffic control	Modify traffic signal –other	0.2	Miles	\$52339	\$52339	HSIP (23 U.S.C. 148)	Multiple/Varies	Multiple/Varies	0		Other Local Agency	Spot	Intersections	
2020-2-PHR_Mile6WRd_Hidalgo	Intersection traffic control	Modify traffic signal –other	0.2	Miles	\$52528	\$52528	HSIP (23 U.S.C. 148)	Multiple/Varies	Multiple/Varies	0		Other Local Agency	Spot	Intersections	
2020-2-PHR_RamseyerRd_Hidalgo	Intersection traffic control	Modify traffic signal –other	0.2	Miles	\$56019	\$56019	HSIP (23 U.S.C. 148)	Multiple/Varies	Multiple/Varies	0		Other Local Agency	Spot	Intersections	
2020-2-PHR_TexanRD_Hidalgo_1	Intersection traffic control	Modify traffic signal –other	0.2	Miles	\$52189	\$52189	HSIP (23 U.S.C. 148)	Multiple/Varies	Multiple/Varies	0		Other Local Agency	Spot	Intersections	
2020-2-PHR_TexanRD_Hidalgo_2	Intersection traffic control	Modify traffic signal –other	0.2	Miles	\$53527	\$63527	HSIP (23 U.S.C. 148)	Multiple/Varies	Multiple/Varies	0		Other Local Agency	Spot	Intersections	
2020-2-SAT_FM0078_1	Roadway	Roadway widening - travel lanes	0.871	Miles	\$1371679	\$1381679	HSIP (23 U.S.C. 148)	Multiple/Varies	Multiple/Varies	0		State Highway Agency	Spot	Intersections	
2020-2-SAT_FM0078_4	Pedestrians and bicyclists	Medians and pedestrian refuge areas	0.29	Miles	\$356786	\$359786	HSIP (23 U.S.C. 148)	Multiple/Varies	Multiple/Varies	0		State Highway Agency	Spot	Roadway Departure	

2023 Texas Highway Safety Improvement Program

PROJECT NAME	IMPROVEMENT CATEGORY	SUBCATEGORY	OUTPUTS	OUTPUT TYPE	HSIP PROJECT COST(\$)	TOTAL PROJECT COST(\$)	FUNDING CATEGORY	LAND USE/AREA TYPE	FUNCTIONAL CLASSIFICATION	AADT	SPEED	OWNERSHIP	METHOD FOR SITE SELECTION	SHSP EMPHASIS AREA	SHSP STRATEGY
SH 73-(SH 124-1.6 MI E)CABLE BARRIERS	Roadside	Barrier - other	1.574	Miles	\$440999	\$450999	HSIP (23 U.S.C. 148)	Multiple/Varies	Multiple/Varies	0		State Highway Agency	Systemic	Roadway Departure	
SH 73-(E OF SH 124-TAYLORS BAYOU)BARRIERS	Roadside	Barrier - other	19.119	Miles	\$3015564	\$3025564	HSIP (23 U.S.C. 148)	Multiple/Varies	Multiple/Varies	0		State Highway Agency	Systemic	Roadway Departure	
BWD_2125_02	Shoulder treatments	Widen shoulder – paved or other (includes add shoulder)	1.72	Miles	\$724090	\$724090	HSIP (23 U.S.C. 148)	Multiple/Varies	Multiple/Varies	0		State Highway Agency	Systemic	Roadway Departure	
BWD_US0377_01	Intersection geometry	Add/modify auxiliary lanes	0.92	Miles	\$805047	\$805047	HSIP (23 U.S.C. 148)	Multiple/Varies	Multiple/Varies	0		State Highway Agency	Spot	Roadway Departure	
US0059-1	Roadside	Barrier - other	6.9209999999999999	Miles	\$5619058	\$5619058	HSIP (23 U.S.C. 148)	Multiple/Varies	Multiple/Varies	0		State Highway Agency	Systemic	Roadway Departure	
US0077	Roadside	Barrier - other	1.2149999999999999	Miles	\$960842	\$960842	HSIP (23 U.S.C. 148)	Multiple/Varies	Multiple/Varies	0		State Highway Agency	Systemic	Roadway Departure	
SH0071	Roadside	Barrier - other	7.0490000000000000	Miles	\$1166770	\$1166770	HSIP (23 U.S.C. 148)	Multiple/Varies	Multiple/Varies	0		State Highway Agency	Systemic	Roadway Departure	
CRP_FM0665	Intersection traffic control	Intersection signing – add basic advance warning	0.303	Miles	\$155341	\$155341	HSIP (23 U.S.C. 148)	Multiple/Varies	Multiple/Varies	0		State Highway Agency	Systemic	Intersections	
LFK_SH0019	Roadside	Barrier - other	4.149	Miles	\$599426	\$602426	HSIP (23 U.S.C. 148)	Multiple/Varies	Multiple/Varies	0		State Highway Agency	Systemic	Roadway Departure	
SAT_IH0037_1	Roadside	Barrier - other	5.77	Miles	\$815382	\$815382	HSIP (23 U.S.C. 148)	Multiple/Varies	Multiple/Varies	0		State Highway Agency	Systemic	Roadway Departure	
SAT_IH0037_2	Roadside	Barrier - other	5.289	Miles	\$880693	\$880693	HSIP (23 U.S.C. 148)	Multiple/Varies	Multiple/Varies	0		State Highway Agency	Systemic	Roadway Departure	
SAT_IH0010_1(CABLE BARRIER FY23)	Roadside	Barrier - other	3.0020000000000000	Miles	\$386320	\$386320	HSIP (23 U.S.C. 148)	Multiple/Varies	Multiple/Varies	0		State Highway Agency	Systemic	Roadway Departure	
SAT_IH0037	Advanced technology and ITS	Wrong-way Driving	3.6459999999999999	Miles	\$458850	\$510850	HSIP (23 U.S.C. 148)	Multiple/Varies	Multiple/Varies	0		State Highway Agency	Spot	Older Drivers	

2023 Texas Highway Safety Improvement Program

PROJECT NAME	IMPROVEMENT CATEGORY	SUBCATEGORY	OUTPUTS	OUTPUT TYPE	HSIP PROJECT COST(\$)	TOTAL PROJECT COST(\$)	FUNDING CATEGORY	LAND USE/AREA TYPE	FUNCTIONAL CLASSIFICATION	AADT	SPEED	OWNERSHIP	METHOD FOR SITE SELECTION	SHSP EMPHASIS AREA	SHSP STRATEGY
		Detection System													
2022 - SAT - IH 10	Roadside	Barrier - other	1.858000000000006	Miles	\$321790	\$327990	HSIP (23 U.S.C. 148)	Multiple/Varies	Multiple/Varies	0		State Highway Agency	Systemic	Roadway Departure	
WFS_US0287_1	Roadside	Barrier - other	1.1	Miles	\$440886	\$442886	HSIP (23 U.S.C. 148)	Multiple/Varies	Multiple/Varies	0		State Highway Agency	Systemic	Roadway Departure	
WFS_US0287_2	Roadside	Barrier - other	0.9	Miles	\$142222	\$142222	HSIP (23 U.S.C. 148)	Multiple/Varies	Multiple/Varies	0		State Highway Agency	Systemic	Roadway Departure	
WFS_US0287_7	Roadside	Barrier - other	9.736	Miles	\$120550	\$120550	HSIP (23 U.S.C. 148)	Multiple/Varies	Multiple/Varies	0		State Highway Agency	Systemic	Roadway Departure	
WFS_US0287_6	Roadside	Barrier - other	1.703	Miles	\$51116	\$51116	HSIP (23 U.S.C. 148)	Multiple/Varies	Multiple/Varies	0		State Highway Agency	Systemic	Roadway Departure	
2020-2-SAT_FM0725_1	Intersection traffic control	Modify traffic signal –other	0.2	Miles	\$128778	\$128778	HSIP (23 U.S.C. 148)	Multiple/Varies	Multiple/Varies	0		State Highway Agency	Spot	Intersections	
2020-2-SAT_FM1117_1	Roadway signs and traffic control	Curve-related warning signs and flashers	1.667	Miles	\$82386	\$82386	HSIP (23 U.S.C. 148)	Multiple/Varies	Multiple/Varies	0		State Highway Agency	Spot	Roadway Departure	
WFS_US0281	Roadside	Barrier - other	0.65	Miles	\$75957	\$75957	HSIP (23 U.S.C. 148)	Multiple/Varies	Multiple/Varies	0		State Highway Agency	Systemic	Roadway Departure	
WFS_SH0079	Roadside	Barrier - other	1.00	Miles	\$136279	\$136279	HSIP (23 U.S.C. 148)	Multiple/Varies	Multiple/Varies	0		State Highway Agency	Systemic	Roadway Departure	
WFS_US0183	Roadside	Barrier - other	4.029	Miles	\$861744	\$861744	HSIP (23 U.S.C. 148)	Multiple/Varies	Multiple/Varies	0		State Highway Agency	Systemic	Roadway Departure	
LRD_FM1472	Intersection traffic control	Modify control – new traffic signal	0.2	Miles	\$472041	\$471041	HSIP (23 U.S.C. 148)	Multiple/Varies	Multiple/Varies	0		State Highway Agency	Spot	Intersections	
TYL_SH0031	Roadside	Barrier - other	2.20	Miles	\$2327603	\$2327603	HSIP (23 U.S.C. 148)	Multiple/Varies	Multiple/Varies	0		State Highway Agency	Systemic	Roadway Departure	
2020-2-SAT_FM1333_1	Shoulder treatments	Widen shoulder – paved or other	2.998	Miles	\$4025336	\$4031336	HSIP (23 U.S.C. 148)	Multiple/Varies	Multiple/Varies	0		State Highway Agency	Spot	Roadway Departure	

2023 Texas Highway Safety Improvement Program

PROJECT NAME	IMPROVEMENT CATEGORY	SUBCATEGORY	OUTPUTS	OUTPUT TYPE	HSIP PROJECT COST(\$)	TOTAL PROJECT COST(\$)	FUNDING CATEGORY	LAND USE/AREA TYPE	FUNCTIONAL CLASSIFICATION	AADT	SPEED	OWNERSHIP	METHOD FOR SITE SELECTION	SHSP EMPHASIS AREA	SHSP STRATEGY
		(includes add shoulder)													
2020-2-SAT_FM2200_1	Shoulder treatments	Widen shoulder – paved or other (includes add shoulder)	2.159	Miles	\$5010276	\$5013276	HSIP (23 U.S.C. 148)	Multiple/Varies	Multiple/Varies	0		State Highway Agency	Spot	Roadway Departure	
2020-2-SAT_FM2579_1	Roadway signs and traffic control	Curve-related warning signs and flashers	8.52	Miles	\$187712	\$187712	HSIP (23 U.S.C. 148)	Multiple/Varies	Multiple/Varies	0		State Highway Agency	Spot	Roadway Departure	
2020-2-SAT_FM3351_1	Roadway	Roadway widening - travel lanes	0.947	Miles	\$1803553	\$1803553	HSIP (23 U.S.C. 148)	Multiple/Varies	Multiple/Varies	0		State Highway Agency	Spot	Intersections	
2020-2-SAT_IH0010_3	Advanced technology and ITS	Wrong-way Driving Detection System	6	Miles	\$641405	\$645905	HSIP (23 U.S.C. 148)	Multiple/Varies	Multiple/Varies	0		State Highway Agency	Spot	Older Drivers	
2020-2-SAT_IH0037_1	Advanced technology and ITS	Wrong-way Driving Detection System	4.3	Miles	\$506855	\$511355	HSIP (23 U.S.C. 148)	Multiple/Varies	Multiple/Varies	0		State Highway Agency	Spot	Older Drivers	
2020-2-SAT_IH0410_1	Advanced technology and ITS	Wrong-way Driving Detection System	8.9	Miles	\$483355	\$487855	HSIP (23 U.S.C. 148)	Multiple/Varies	Multiple/Varies	0		State Highway Agency	Spot	Older Drivers	
2020-2-SAT_RM1050_1	Roadway signs and traffic control	Curve-related warning signs and flashers	13.636	Miles	\$336609	\$336609	HSIP (23 U.S.C. 148)	Multiple/Varies	Multiple/Varies	0		State Highway Agency	Spot	Roadway Departure	
2020-2-SAT_RM1376_1	Shoulder treatments	Widen shoulder – paved or other (includes add shoulder)	3.002	Miles	\$5653830	\$5675630	VRU Safety Special Rule (23 U.S.C. 148(g)(3))	Multiple/Varies	Multiple/Varies	0		State Highway Agency	Spot	Roadway Departure	
2020-2-SAT_SH0097_1	Roadside	Barrier - other	2.101	Miles	\$555134	\$555134	HSIP (23 U.S.C. 148)	Multiple/Varies	Multiple/Varies	0		State Highway Agency	Systemic	Roadway Departure	
2020-2-SAT_SH0151_1	Roadway delineation	Roadway delineation - other	4.452	Miles	\$81111	\$81111	HSIP (23 U.S.C. 148)	Multiple/Varies	Multiple/Varies	0		State Highway Agency	Spot	Roadway Departure	
2020-2-SAT_SL1604_15	Roadside	Barrier - other	0.379	Miles	\$96285	\$98285	HSIP (23 U.S.C. 148)	Multiple/Varies	Multiple/Varies	0		State Highway Agency	Systemic	Roadway Departure	

2023 Texas Highway Safety Improvement Program

PROJECT NAME	IMPROVEMENT CATEGORY	SUBCATEGORY	OUTPUTS	OUTPUT TYPE	HSIP PROJECT COST(\$)	TOTAL PROJECT COST(\$)	FUNDING CATEGORY	LAND USE/AREA TYPE	FUNCTIONAL CLASSIFICATION	AADT	SPEED	OWNERSHIP	METHOD FOR SITE SELECTION	SHSP EMPHASIS AREA	SHSP STRATEGY
2020-2-SAT_US0083_1	Roadway signs and traffic control	Curve-related warning signs and flashers	8.2	Miles	\$394389	\$394389	HSIP (23 U.S.C. 148)	Multiple/Varies	Multiple/Varies	0		State Highway Agency	Spot	Roadway Departure	
2020-2-SAT_US0087_3	Roadside	Barrier - other	5.417	Miles	\$2040207	\$2044207	HSIP (23 U.S.C. 148)	Multiple/Varies	Multiple/Varies	0		State Highway Agency	Systemic	Roadway Departure	
2020-2-SAT_US0090_1	Roadway delineation	Roadway delineation - other	5.9	Miles	\$195120	\$208120	HSIP (23 U.S.C. 148)	Multiple/Varies	Multiple/Varies	0		State Highway Agency	Spot	Roadway Departure	
2020-2-SAT_US0090_17	Roadside	Barrier - other	6.25	Miles	\$1936457	\$1946457	HSIP (23 U.S.C. 148)	Multiple/Varies	Multiple/Varies	0		State Highway Agency	Systemic	Roadway Departure	
2020-2-SAT_US0090_6	Roadside	Barrier - other	2.473	Miles	\$664622	\$664622	HSIP (23 U.S.C. 148)	Multiple/Varies	Multiple/Varies	0		State Highway Agency	Systemic	Roadway Departure	
BRY_SH21_002	Roadside	Barrier - other	4.3230000000000001	Miles	\$1020603	\$1072621	HSIP (23 U.S.C. 148)	Multiple/Varies	Multiple/Varies	0		State Highway Agency	Systemic	Roadway Departure	
2020-2-SAT_US0181_7	Roadside	Barrier - other	11.021	Miles	\$2646819	\$2651319	HSIP (23 U.S.C. 148)	Multiple/Varies	Multiple/Varies	0		State Highway Agency	Systemic	Roadway Departure	
CRP_US0181_2B	Roadside	Barrier - other	3.108	Miles	\$668418	\$668418	HSIP (23 U.S.C. 148)	Multiple/Varies	Multiple/Varies	0		State Highway Agency	Systemic	Roadway Departure	
CRP_SH0089	Roadside	Barrier - other	3.36	Miles	\$564090	\$564090	HSIP (23 U.S.C. 148)	Multiple/Varies	Multiple/Varies	0		State Highway Agency	Systemic	Roadway Departure	
2020-2-SAT_ESouthcrossBlvd_SanAntonio_3	Intersection traffic control	Modify traffic signal -other	0.2	Miles	\$397173	\$397173	HSIP (23 U.S.C. 148)	Multiple/Varies	Multiple/Varies	0		Other Local Agency	Spot	Intersections	
2020-2-SAT_SanPedroAve_SanAntonio_1	Intersection traffic control	Modify traffic signal -other	0.2	Miles	\$399588	\$416559	HSIP (23 U.S.C. 148)	Multiple/Varies	Multiple/Varies	0		Other Local Agency	Spot	Intersections	
2020-2-SAT_SFloresSt_SanAntonio_4	Intersection traffic control	Modify traffic signal -other	0.2	Miles	\$280987	\$280987	HSIP (23 U.S.C. 148)	Multiple/Varies	Multiple/Varies	0		Other Local Agency	Spot	Intersections	
CRP_US0181_2A	Roadside	Barrier - other	3.2129999999999999	Miles	\$688746	\$690746	HSIP (23 U.S.C. 148)	Multiple/Varies	Multiple/Varies	0		State Highway Agency	Systemic	Roadway Departure	

2023 Texas Highway Safety Improvement Program

PROJECT NAME	IMPROVEMENT CATEGORY	SUBCATEGORY	OUTPUTS	OUTPUT TYPE	HSIP PROJECT COST(\$)	TOTAL PROJECT COST(\$)	FUNDING CATEGORY	LAND USE/AREA TYPE	FUNCTIONAL CLASSIFICATION	AADT	SPEED	OWNERSHIP	METHOD FOR SITE SELECTION	SHSP EMPHASIS AREA	SHSP STRATEGY
CRP_US0181_1	Roadside	Barrier - other	3.3	Miles	\$654353	\$654353	HSIP (23 U.S.C. 148)	Multiple/Varies	Multiple/Varies	0		State Highway Agency	Systemic	Roadway Departure	
CRP_US0281	Roadside	Barrier - other	0.75	Miles	\$145604	\$145604	HSIP (23 U.S.C. 148)	Multiple/Varies	Multiple/Varies	0		State Highway Agency	Systemic	Roadway Departure	
IH-635 FROM OLD SEAGOVILLE TO SH 352	Roadside	Barrier - other	4.589	Miles	\$4193300	\$4306988	HSIP (23 U.S.C. 148)	Multiple/Varies	Multiple/Varies	0		State Highway Agency	Systemic	Roadway Departure	
TYL_US0069	Roadside	Barrier - other	3.8120000000000001	Miles	\$1345741	\$1369741	HSIP (23 U.S.C. 148)	Multiple/Varies	Multiple/Varies	0		State Highway Agency	Systemic	Roadway Departure	
TYL_FY23_ILLUMINATION	Lighting	Intersection lighting	4	Intersections	\$143045	\$145045	HSIP (23 U.S.C. 148)	Multiple/Varies	Multiple/Varies	0		State Highway Agency	Systemic	Intersections	
TYL_GRANDEBLVD_TYLER	Roadway signs and traffic control	Curve-related warning signs and flashers	1	Locations	\$108506	\$128506	HSIP (23 U.S.C. 148)	Multiple/Varies	Multiple/Varies	0		State Highway Agency	Spot	Roadway Departure	
2020-2-SJT_IH0010_1	Roadside	Barrier - other	21.86	Miles	\$3728879	\$3728879	HSIP (23 U.S.C. 148)	Multiple/Varies	Multiple/Varies	0		State Highway Agency	Systemic	Roadway Departure	
2020-2-SJT_IH0010_3	Roadside	Barrier - other	17.66	Miles	\$4584517	\$4586517	HSIP (23 U.S.C. 148)	Multiple/Varies	Multiple/Varies	0		State Highway Agency	Systemic	Roadway Departure	
2020-2-SJT_US0190_1	Intersection geometry	Add/modify auxiliary lanes	0.2	Miles	\$1046711	\$1046711	HSIP (23 U.S.C. 148)	Multiple/Varies	Multiple/Varies	0		State Highway Agency	Spot	Intersections	
2020-2-SJT_US0190_3	Intersection geometry	Add/modify auxiliary lanes	0.2	Miles	\$1077817	\$1080817	HSIP (23 U.S.C. 148)	Multiple/Varies	Multiple/Varies	0		State Highway Agency	Spot	Intersections	
2020-2-TYL_FM0014	Roadside	Roadside - other	3.353	Miles	\$1256713	\$2620764	HSIP (23 U.S.C. 148)	Multiple/Varies	Multiple/Varies	0		State Highway Agency	Spot	Roadway Departure	
2020-2-TYL_FM0315	Shoulder treatments	Widen shoulder - paved or other (includes add shoulder)	6.51	Miles	\$7146051	\$7152051	HSIP (23 U.S.C. 148)	Multiple/Varies	Multiple/Varies	0		State Highway Agency	Spot	Roadway Departure	
2020-2-TYL_CherokeeCo_Systemic	Roadway signs and traffic control	Curve-related warning signs and flashers	1	Locations	\$532753	\$533753	HSIP (23 U.S.C. 148)	Multiple/Varies	Multiple/Varies	0		State Highway Agency	Systemic	Roadway Departure	

2023 Texas Highway Safety Improvement Program

PROJECT NAME	IMPROVEMENT CATEGORY	SUBCATEGORY	OUTPUTS	OUTPUT TYPE	HSIP PROJECT COST(\$)	TOTAL PROJECT COST(\$)	FUNDING CATEGORY	LAND USE/AREA TYPE	FUNCTIONAL CLASSIFICATION	AADT	SPEED	OWNERSHIP	METHOD FOR SITE SELECTION	SHSP EMPHASIS AREA	SHSP STRATEGY
2020-2-TYL_Gregg_Rusk_Co_Systemic	Roadway signs and traffic control	Curve-related warning signs and flashers	1	Locations	\$224592	\$227092	HSIP (23 U.S.C. 148)	Multiple/Varies	Multiple/Varies	0		State Highway Agency	Systemic	Roadway Departure	
2020-2-TYL_Smith_Systemic	Roadway signs and traffic control	Curve-related warning signs and flashers	1	Locations	\$551529	\$553529	HSIP (23 U.S.C. 148)	Multiple/Varies	Multiple/Varies	0		State Highway Agency	Systemic	Roadway Departure	
TYL_SL281_FM2208	Roadside	Roadside - other	0.273999999999999	Miles	\$225255	\$239255	HSIP (23 U.S.C. 148)	Multiple/Varies	Multiple/Varies	0		State Highway Agency	Spot	Roadway Departure	
2020-2-TYL_VanZandtCo_1_Systemic	Roadway signs and traffic control	Curve-related warning signs and flashers	1	Locations	\$671280	\$672280	HSIP (23 U.S.C. 148)	Multiple/Varies	Multiple/Varies	0		State Highway Agency	Systemic	Roadway Departure	
2020-2-TYL_Wood_Systemic	Roadway signs and traffic control	Curve-related warning signs and flashers	1	Locations	\$374186	\$376186	HSIP (23 U.S.C. 148)	Multiple/Varies	Multiple/Varies	0		State Highway Agency	Systemic	Roadway Departure	
IH35 SL 0015-01	Pedestrians and bicyclists	Install new crosswalk	0.200000000000000	Miles	\$341697	\$348697	HSIP (23 U.S.C. 148)	Multiple/Varies	Multiple/Varies	0		State Highway Agency	Systemic	Pedestrians	
WFS_US0081	Roadside	Barrier - other	6.572	Miles	\$1346737	\$1350737	HSIP (23 U.S.C. 148)	Multiple/Varies	Multiple/Varies	0		State Highway Agency	Systemic	Roadway Departure	
2020-2-US 259	Pedestrians and bicyclists	Medians and pedestrian refuge areas	2.555	Miles	\$3787211	\$3791211	HSIP (23 U.S.C. 148)	Multiple/Varies	Multiple/Varies	0		State Highway Agency	Spot	Roadway Departure	
2020-2-TYL_BillOwensPkwy_Longview	Roadside	Roadside - other	1	Locations	\$90510	\$110510	HSIP (23 U.S.C. 148)	Multiple/Varies	Multiple/Varies	0		Other Local Agency	Spot	Roadway Departure	
2020-2-TYL_NBroadwaySt_Tyler	Pedestrians and bicyclists	Pedestrians and bicyclists - other	1	Locations	\$24410	\$97960	HSIP (23 U.S.C. 148)	Multiple/Varies	Multiple/Varies	0		Other Local Agency	Spot	Pedestrians	
WFS_US0082_4	Roadside	Barrier - other	0.100000000000000	Miles	\$27175	\$27175	HSIP (23 U.S.C. 148)	Multiple/Varies	Multiple/Varies	0		State Highway Agency	Systemic	Roadway Departure	
WFS_US0287_4	Roadside	Barrier - other	0.479999999999999	Miles	\$107808	\$107808	HSIP (23 U.S.C. 148)	Multiple/Varies	Multiple/Varies	0		State Highway Agency	Systemic	Roadway Departure	
2020-2-TYL_NewCopelandRd_Tyler	Intersection traffic control	Modify traffic signal - other	1.4	Miles	\$458331	\$644977	HSIP (23 U.S.C. 148)	Multiple/Varies	Multiple/Varies	0		Other Local Agency	Spot	Intersections	

2023 Texas Highway Safety Improvement Program

PROJECT NAME	IMPROVEMENT CATEGORY	SUBCATEGORY	OUTPUTS	OUTPUT TYPE	HSIP PROJECT COST(\$)	TOTAL PROJECT COST(\$)	FUNDING CATEGORY	LAND USE/AREA TYPE	FUNCTIONAL CLASSIFICATION	AADT	SPEED	OWNERSHIP	METHOD FOR SITE SELECTION	SHSP EMPHASIS AREA	SHSP STRATEGY
2020-2-WAC_FM1695	Intersection traffic control	Modify traffic signal –other	0.2	Miles	\$261732	\$261732	HSIP (23 U.S.C. 148)	Multiple/Varies	Multiple/Varies	0		State Highway Agency	Spot	Intersections	
WFS_US0287_5	Roadside	Barrier - other	8.138000000000003	Miles	\$71362	\$71362	HSIP (23 U.S.C. 148)	Multiple/Varies	Multiple/Varies	0		State Highway Agency	Systemic	Roadway Departure	
2020-2-WAC_IH0035_1 Salado	Roadway	Pavement surface - other	1.35	Miles	\$263602	\$597616	HSIP (23 U.S.C. 148)	Multiple/Varies	Multiple/Varies	0		State Highway Agency	Spot	Roadway Departure	
2020-2-WAC_IH0035_2 Temple	Roadway	Pavement surface - other	1.257	Miles	\$300018	\$688024	HSIP (23 U.S.C. 148)	Multiple/Varies	Multiple/Varies	0		State Highway Agency	Spot	Roadway Departure	
2020-2-WAC_IH0035_3 LORENA	Roadway	Pavement surface - other	0.55	Miles	\$308506	\$794656	HSIP (23 U.S.C. 148)	Multiple/Varies	Multiple/Varies	0		State Highway Agency	Spot	Roadway Departure	
2020-2-WAC_SH0006_2	Intersection geometry	Add/modify auxiliary lanes	1	Miles	\$723086	\$730086	HSIP (23 U.S.C. 148)	Multiple/Varies	Multiple/Varies	0		State Highway Agency	Spot	Intersections	
2020-2-WAC_US0077_2	Intersection traffic control	Modify traffic signal –other	0.2	Miles	\$246456	\$285456	HSIP (23 U.S.C. 148)	Multiple/Varies	Multiple/Varies	0		State Highway Agency	Systemic	Intersections	
2020-2-WAC_US0077_3	Intersection traffic control	Modify traffic signal –other	0.2	Miles	\$288757	\$288757	HSIP (23 U.S.C. 148)	Multiple/Varies	Multiple/Varies	0		State Highway Agency	Systemic	Intersections	
2020-2-WAC_US0190_2	Roadside	Barrier - other	5.4	Miles	\$4599999	\$4610999	HSIP (23 U.S.C. 148)	Multiple/Varies	Multiple/Varies	0		State Highway Agency	Systemic	Roadway Departure	
2020-2-WAC_ApacheDr_Temple	Pedestrians and bicyclists	Install new crosswalk	0.53	Miles	\$450329	\$455322	HSIP (23 U.S.C. 148)	Multiple/Varies	Multiple/Varies	0		Other Local Agency	Systemic	Pedestrians	
2020-2-WAC_WSYoungDr_Killeen	Intersection traffic control	Modify control – new traffic signal	0.123	Miles	\$322700	\$466859	HSIP (23 U.S.C. 148)	Multiple/Varies	Multiple/Varies	0		Other Local Agency	Spot	Intersections	
2020-2-WFS_FM1630	Roadway delineation	Roadway delineation - other	2.084	Miles	\$1478093	\$2746284	HSIP (23 U.S.C. 148)	Multiple/Varies	Multiple/Varies	0		State Highway Agency	Spot	Roadway Departure	
2020-2-WFS_FM1630_2	Roadway delineation	Roadway delineation - other	3.427	Miles	\$1866857	\$1866857	HSIP (23 U.S.C. 148)	Multiple/Varies	Multiple/Varies	0		State Highway Agency	Systemic	Roadway Departure	

2023 Texas Highway Safety Improvement Program

PROJECT NAME	IMPROVEMENT CATEGORY	SUBCATEGORY	OUTPUTS	OUTPUT TYPE	HSIP PROJECT COST(\$)	TOTAL PROJECT COST(\$)	FUNDING CATEGORY	LAND USE/AREA TYPE	FUNCTIONAL CLASSIFICATION	AADT	SPEED	OWNERSHIP	METHOD FOR SITE SELECTION	SHSP EMPHASIS AREA	SHSP STRATEGY
2020-2-WFS_FM0174	Roadway delineation	Roadway delineation - other	6.106	Miles	\$4557309	\$4557309	HSIP (23 U.S.C. 148)	Multiple/Varies	Multiple/Varies	0		State Highway Agency	Systemic	Roadway Departure	
2020-2-YKM_SH0035_2	Intersection traffic control	Modify traffic signal -other	0.2	Miles	\$327710	\$329210	HSIP (23 U.S.C. 148)	Multiple/Varies	Multiple/Varies	0		State Highway Agency	Spot	Intersections	
2020-2-YKM_SH0172_2	Shoulder treatments	Pave existing shoulders	3.094	Miles	\$2118839	\$2120339	HSIP (23 U.S.C. 148)	Multiple/Varies	Multiple/Varies	0		State Highway Agency	Systemic	Roadway Departure	
2020-2-YKM_PleasantGreenDr_Victoria	Intersection traffic control	Intersection signing – add basic advance warning	1	Intersections	\$50136	\$51636	HSIP (23 U.S.C. 148)	Multiple/Varies	Multiple/Varies	0		Other Local Agency	Spot	Intersections	
WFS_US0287_3	Roadside	Barrier - other	4.214	Miles	\$690648	\$690648	HSIP (23 U.S.C. 148)	Multiple/Varies	Multiple/Varies	0		State Highway Agency	Systemic	Roadway Departure	
SH 159 INSTALL SIGNAL HSIP 2308	Intersection traffic control	Modify control – new traffic signal	0.04	Miles	\$495756	\$515449	HSIP (23 U.S.C. 148)	Multiple/Varies	Multiple/Varies	0		State Highway Agency	Spot	Intersections	
FM 1593-02 TRAFFIC SIGNAL HSIP 2022	Intersection traffic control	Modify control – new traffic signal	0.1000000000000001	Miles	\$94847	\$94847	HSIP (23 U.S.C. 148)	Multiple/Varies	Multiple/Varies	0		State Highway Agency	Spot	Intersections	
FM 1593 TRAFFIC SIGNAL HSIP 2022	Intersection traffic control	Modify control – new traffic signal	0.19999999999999999	Miles	\$201709	\$201709	HSIP (23 U.S.C. 148)	Multiple/Varies	Multiple/Varies	0		State Highway Agency	Spot	Intersections	
FM 1593 TRAFFIC SIGNAL HSIP 2022-1	Intersection traffic control	Modify control – new traffic signal	0.09999999999999999	Miles	\$108963	\$108963	HSIP (23 U.S.C. 148)	Multiple/Varies	Multiple/Varies	0		State Highway Agency	Spot	Intersections	
FM 669 WIDEN BORDEN CO	Shoulder treatments	Widen shoulder – paved or other (includes add shoulder)	6.256	Miles	\$3149254	\$3157254	HSIP (23 U.S.C. 148)	Multiple/Varies	Multiple/Varies	0		State Highway Agency	Spot	Roadway Departure	
Safety Campaign	Pedestrians and bicyclists	Pedestrians and bicyclists – other	1	Communications efforts	\$5000000	\$5000000	HSIP (23 U.S.C. 148)	N/A	N/A	0	0	Communications	Systemic	Vulnerable Road Users	

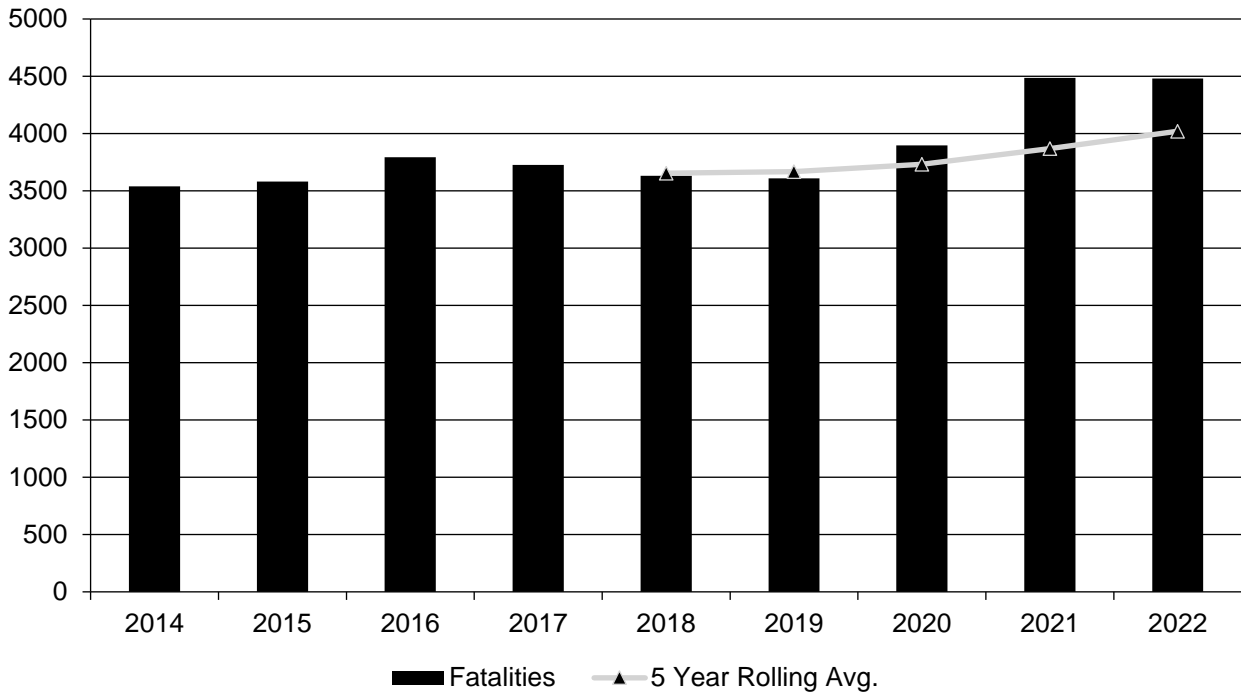
Safety Performance

General Highway Safety Trends

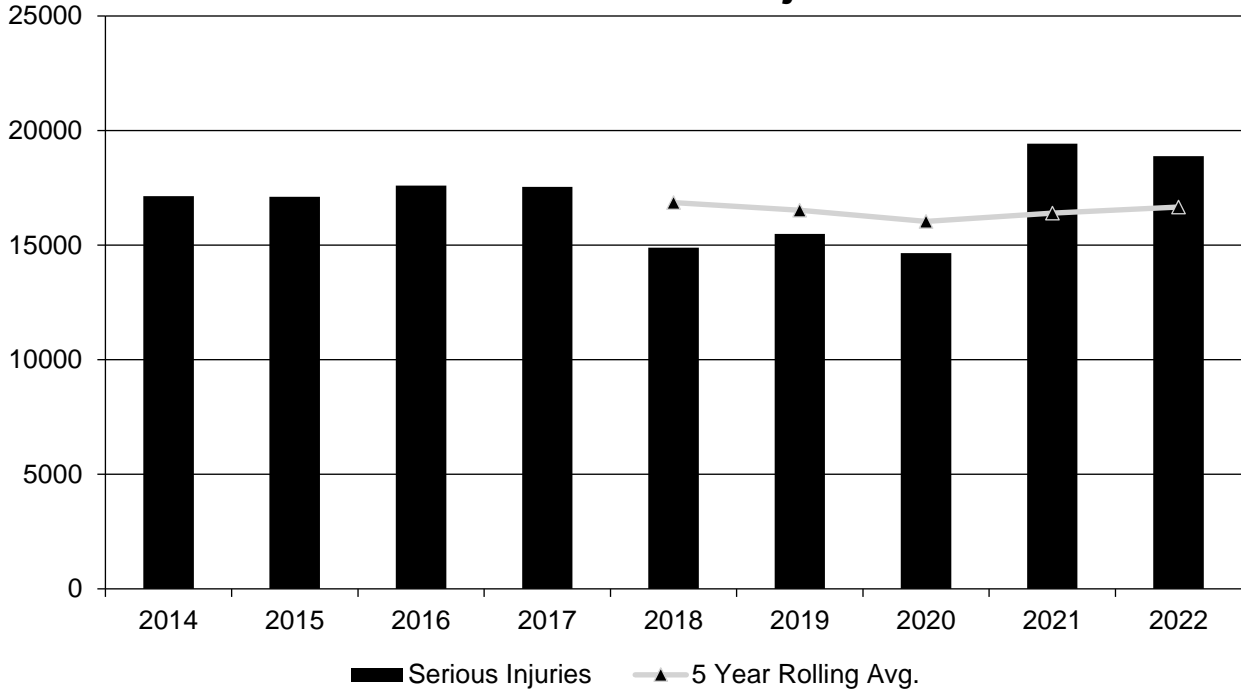
Present data showing the general highway safety trends in the State for the past five years.

PERFORMANCE MEASURES	2014	2015	2016	2017	2018	2019	2020	2021	2022
Fatalities	3,538	3,582	3,794	3,726	3,631	3,610	3,896	4,485	4,481
Serious Injuries	17,134	17,110	17,602	17,546	14,892	15,483	14,656	19,434	18,880
Fatality rate (per HMVMT)	1.460	1.390	1.400	1.360	1.310	1.260	1.328	1.560	1.545
Serious injury rate (per HMVMT)	7.050	6.630	6.490	6.390	5.370	5.530	4.996	6.740	6.511
Number non-motorized fatalities	538	613	746	670	690	728	796	914	919
Number of non-motorized serious injuries	1,364	1,435	1,564	1,478	1,414	1,572	1,442	1,714	1,768

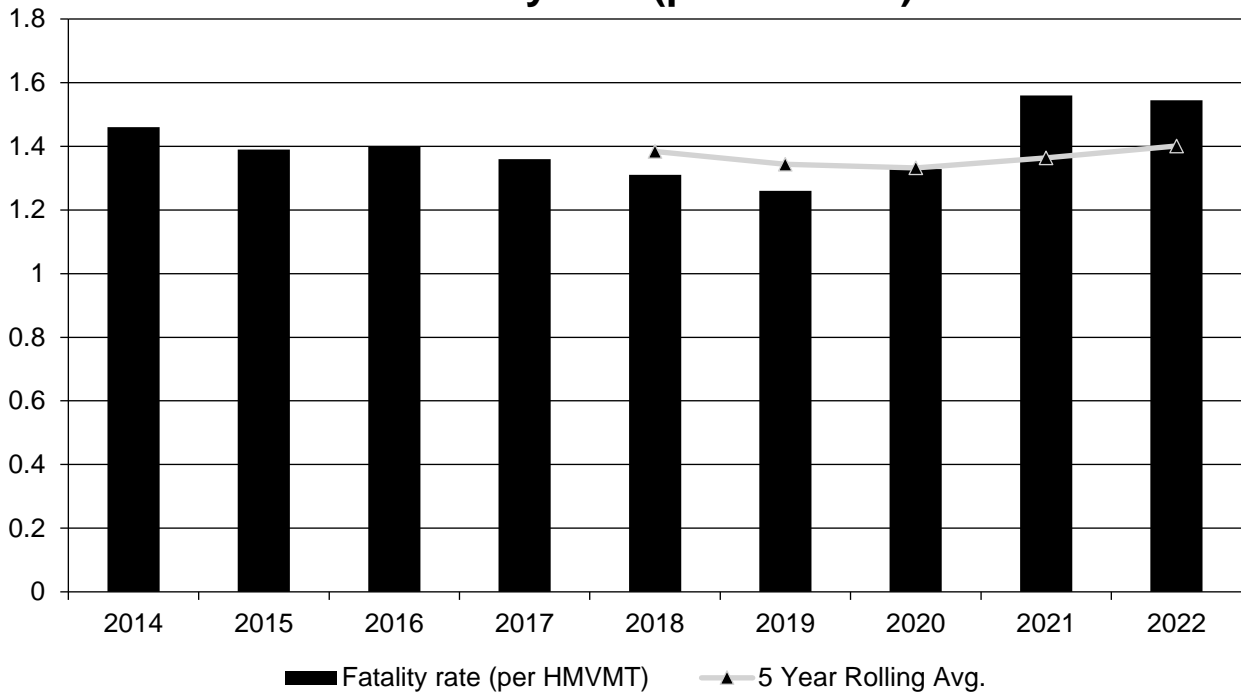
Annual Fatalities



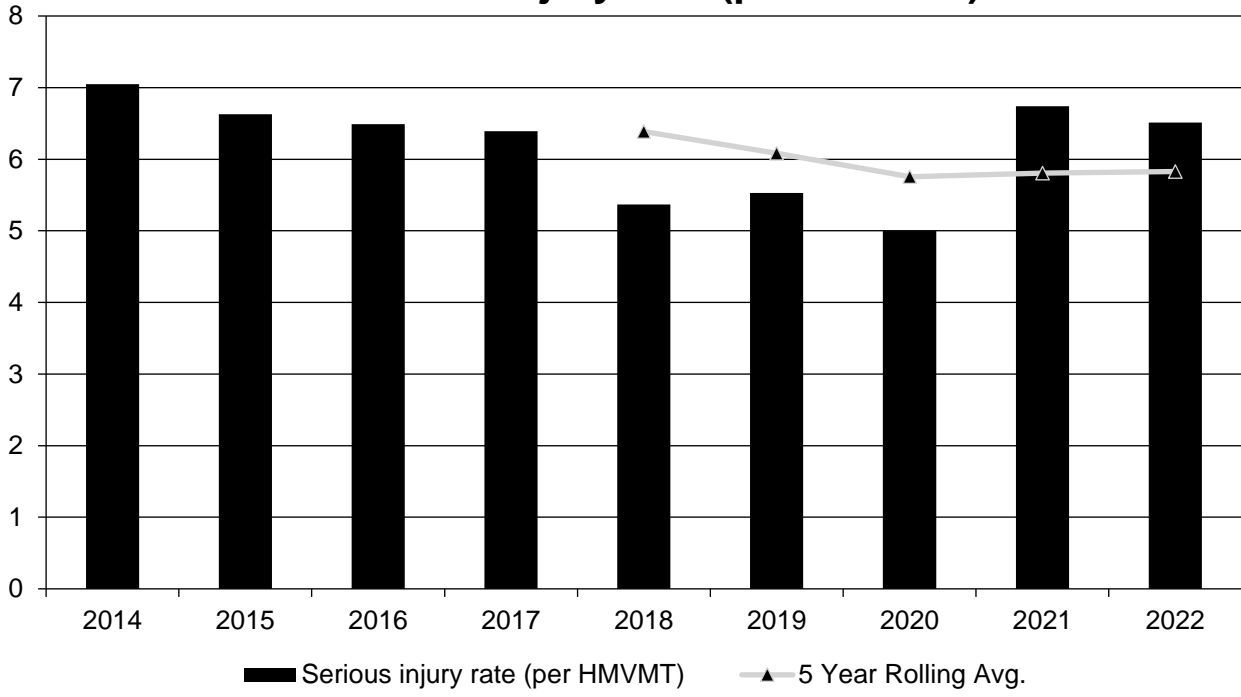
Annual Serious Injuries



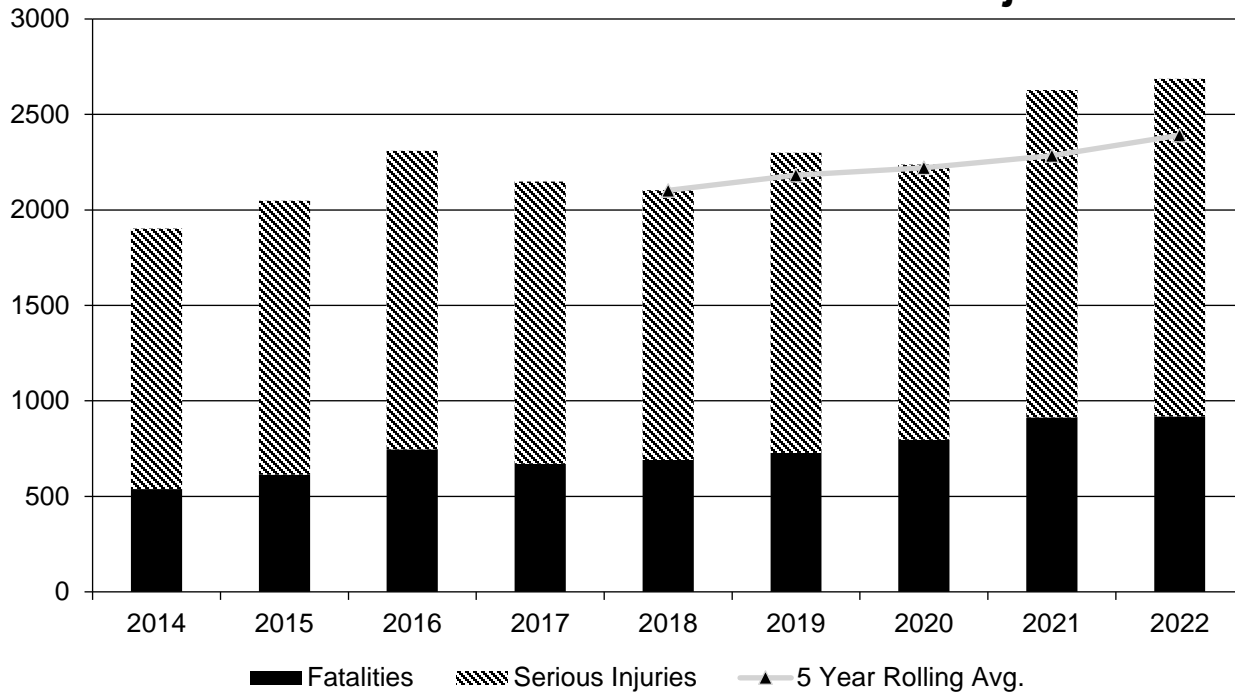
Fatality rate (per HMVMT)



Serious injury rate (per HMVMT)



Non Motorized Fatalities and Serious Injuries



Describe fatality data source.

State Motor Vehicle Crash Database

To the maximum extent possible, present this data by functional classification and ownership.

Year 2022

Functional Classification	Number of Fatalities (5-yr avg)	Number of Serious Injuries (5-yr avg)	Fatality Rate (per HMVMT) (5-yr avg)	Serious Injury Rate (per HMVMT) (5-yr avg)
Rural Principal Arterial (RPA) - Interstate	206.8	574	1.05	2.92
Rural Principal Arterial (RPA) - Other Freeways and Expressways	10.8	29.6	1.03	2.8
Rural Principal Arterial (RPA) - Other	484.2	1,329.6	1.98	5.43
Rural Minor Arterial	328	898.2	2.76	7.6
Rural Minor Collector	37.2	129.4	1.88	6.52
Rural Major Collector	379.8	1,162.8	2.84	8.69

2023 Texas Highway Safety Improvement Program

Functional Classification	Number of Fatalities (5-yr avg)	Number of Serious Injuries (5-yr avg)	Fatality Rate (per HMVMT) (5-yr avg)	Serious Injury Rate (per HMVMT) (5-yr avg)
Rural Local Road or Street	328.2	1,731.4	6.62	34.89
Urban Principal Arterial (UPA) - Interstate	538.8	1,948.6	1.04	3.76
Urban Principal Arterial (UPA) - Other Freeways and Expressways	232	933.2	0.71	2.85
Urban Principal Arterial (UPA) - Other	565.4	2,502.4	1.34	5.93
Urban Minor Arterial	144.2	717	0.42	2.06
Urban Minor Collector	0.8	3	0.1	0.36
Urban Major Collector	56.4	293.2	0.2	1.02
Urban Local Road or Street	664.6	4,260.2	5.31	33.97

2023 Texas Highway Safety Improvement Program

Year 2022

Roadways	Number of Fatalities (5-yr avg)	Number of Serious Injuries (5-yr avg)	Fatality Rate (per HMVMT) (5-yr avg)	Serious Injury Rate (per HMVMT) (5-yr avg)
State Highway Agency	3,029.4	11,032.4	0.01	0.05
County Highway Agency	276.4	1,372.8	0.02	0.08
Town or Township Highway Agency				
City or Municipal Highway Agency	647	3,988.6	0.01	0.08
State Park, Forest, or Reservation Agency				
Local Park, Forest or Reservation Agency				
Other State Agency				
Other Local Agency				
Private (Other than Railroad)				
Railroad				
State Toll Authority				
Local Toll Authority	44.4	217.6	0.01	0.03
Other Public Instrumentality (e.g. Airport, School, University)	1.6	3.6	0	0.01
Indian Tribe Nation				

Safety Performance Targets

Safety Performance Targets

Calendar Year 2024 Targets *

Number of Fatalities:3567.0

Describe the basis for established target, including how it supports SHSP goals.

2023 Texas Highway Safety Improvement Program

The Texas Transportation Commission (TTC) adopted Minute Order 115481 in May of 2019, directing the Texas Department of Transportation (TxDOT) to work toward the goal of reducing the number of deaths on Texas roadways by half by the year 2035 and to zero by the year 2050. TxDOT has modified its performance measures and target calculations accordingly. The targets for each year were determined by establishing a linear trend between the 2019 fatal crash counts & fatalities, and zero by 2050, with a half-way target in 2035.

Number of Serious Injuries:18096.0

Describe the basis for established target, including how it supports SHSP goals.

The Texas Transportation Commission (TTC) adopted Minute Order 115481 in May of 2019, directing the Texas Department of Transportation (TxDOT) to work toward the goal of reducing the number of deaths on Texas roadways by half by the year 2035 and to zero by the year 2050. TxDOT has modified its performance measures and target calculations accordingly. The targets for each year were determined by establishing a linear trend between the 2019 fatal crash counts & fatalities, and zero by 2050, with a half-way target in 2035.

Fatality Rate:1.360

Describe the basis for established target, including how it supports SHSP goals.

The Texas Transportation Commission (TTC) adopted Minute Order 115481 in May of 2019, directing the Texas Department of Transportation (TxDOT) to work toward the goal of reducing the number of deaths on Texas roadways by half by the year 2035 and to zero by the year 2050. TxDOT has modified its performance measures and target calculations accordingly. The targets for each year were determined by establishing a linear trend between the 2019 fatal crash counts & fatalities, and zero by 2050, with a half-way target in 2035.

Serious Injury Rate:6.640

Describe the basis for established target, including how it supports SHSP goals.

The Texas Transportation Commission (TTC) adopted Minute Order 115481 in May of 2019, directing the Texas Department of Transportation (TxDOT) to work toward the goal of reducing the number of deaths on Texas roadways by half by the year 2035 and to zero by the year 2050. TxDOT has modified its performance measures and target calculations accordingly. The targets for each year were determined by establishing a linear trend between the 2019 fatal crash counts & fatalities, and zero by 2050, with a half-way target in 2035.

Total Number of Non-Motorized Fatalities and Serious Injuries:2371.0

Describe the basis for established target, including how it supports SHSP goals.

The Texas Transportation Commission (TTC) adopted Minute Order 115481 in May of 2019, directing the Texas Department of Transportation (TxDOT) to work toward the goal of reducing the number of deaths on Texas roadways by half by the year 2035 and to zero by the year 2050. TxDOT has modified its performance measures and target calculations accordingly. The targets for each year were determined by establishing a linear trend between the 2019 fatal crash counts & fatalities, and zero by 2050, with a half-way target in 2035.

Describe efforts to coordinate with other stakeholders (e.g. MPOs, SHSO) to establish safety performance targets.

In May of 2019, the Texas Transportation Commission (TTC) adopted Minute Order 115481, directing TxDOT to work toward the goal of reducing the number of deaths on Texas roadways by half by the year 2035 and to zero by the year 2050. TxDOT modified its performance measures and target calculations accordingly.

The calculations for the new targets were developed by dividing FY 2019 CRIS Fatalities (year the direction was provided by TTC) by the number of years left 2050. This afforded TxDOT to achieve 50 percent reduction of fatalities by 2035. As of 2035 the reduction in fatalities was recalculated in the same manner to achieve ZERO fatalities by 2050.

During the development of the new SHSP, TxDOT reached out to its stakeholders to advise them of this process and solicit input regarding methodology or concerns about the targets as calculated, and included this feedback in its official documentation of the SHSP development process.

Does the State want to report additional optional targets?

No

On May 30th, 2019, the Texas Transportation Commission adopted a formal goal to achieve zero deaths on our roadways by 2050 with a midway goal to cut fatalities in half by 2035.

Describe progress toward meeting the State’s 2022 Safety Performance Targets (based on data available at the time of reporting). For each target, include a discussion of any reasons for differences in the actual outcomes and targets.

PERFORMANCE MEASURES	TARGETS	ACTUALS
Number of Fatalities	3272.0	4020.6
Number of Serious Injuries	19065.0	16669.0
Fatality Rate	1.230	1.401
Serious Injury Rate	4.996	5.829
Non-Motorized Fatalities and Serious Injuries	2238.0	2391.4

Based on the data available going into 2020, for several years there had been progress towards meeting the aspirational fatality targets established by the Road to Zero effort as ordered by the Texas Transportation Commission in May of 2019. There was considerable variability between the years 2020 and 2022 demonstrating unexpected increases even during the pandemic quarantine periods. Several reasons for this have been cited nationwide and not unique to Texas such as increase in speeding and distracted driving behaviors. Both of these emphasis areas have been carried through to the new 2023-2027 Texas SHSP.

Each of these targets is now calculated based on our commitment to the Road to Zero initiative, which requires drastic reductions in fatal and serious injury crashes in order to reach that goal. It will take time for the results of our efforts to be reflected in the actual crash counts, at which time we will see each of these disparities begin to narrow and then resolve in favor of the travelling public.

Applicability of Special Rules

Does the VRU Safety Special Rule apply to the State for this reporting period?

Yes

TxDOT received notification that the state crash counts triggered the VRU special rule on April 21, 2022, after we had substantially completed programming for FY 2023 funds. Since that did not leave us time to develop a statistical methodology to systematically program safety projects to address the VRU population, we evaluated our existing portfolio of projects and identified those projects that were expected to have the most significant impact on vulnerable road user safety.

Because pedestrian, micromobility, and younger & older users' safety is already an important component of TxDOT's safety planning processes, we were able to select approximately \$110M in projects that would be eligible for reclassification as VRU safety projects.

The next obstacle was that we were not able to obligate VRU funds until after November of 2022, which is 3 months into the state fiscal year. Since our letting schedule runs two months in advance, we were only able to reclassify projects beginning in March of 2023. The Finance division at TxDOT provided extensive support to this effort and reclassified projects until the VRU appropriation was exhausted, in the amount of \$46,118,374.

In summary, the only obstacle to obligating funds for VRU safety is that the Federal processes create significant administrative burden to state DOTs who are already working to address these important components of the Road to Zero.

Does the HRRR special rule apply to the State for this reporting period?

No

Provide the number of older driver and pedestrian fatalities and serious injuries 65 years of age and older for the past seven years.

PERFORMANCE MEASURES	2016	2017	2018	2019	2020	2021	2022
Number of Older Driver and Pedestrian Fatalities	399	392	456	445	446	500	508
Number of Older Driver and Pedestrian Serious Injuries	1,092	1,153	985	1,068	952	1,232	1,323

Evaluation

Program Effectiveness

How does the State measure effectiveness of the HSIP?

- Change in fatalities and serious injuries

Based on the measures of effectiveness selected previously, describe the results of the State's program level evaluations.

Based on the measure of effectiveness selected previously, "Change in fatalities and suspected serious injuries," TxDOT's efforts over the last decade are making a significant difference in saving the lives of Texans and visitors to our great State. The new HSIP process as mentioned previously was implemented in FY 2021 and will take time to evaluate over the coming years once projects selected in the new process have been constructed. We are dismayed at the increase in crash counts seen in the last years nationwide, and TxDOT has taken aggressive steps forward in public messaging, driver education, and safety construction funding.

What other indicators of success does the State use to demonstrate effectiveness and success of the Highway Safety Improvement Program?

- # miles improved by HSIP
- Increased awareness of safety and data-driven process
- More systemic programs

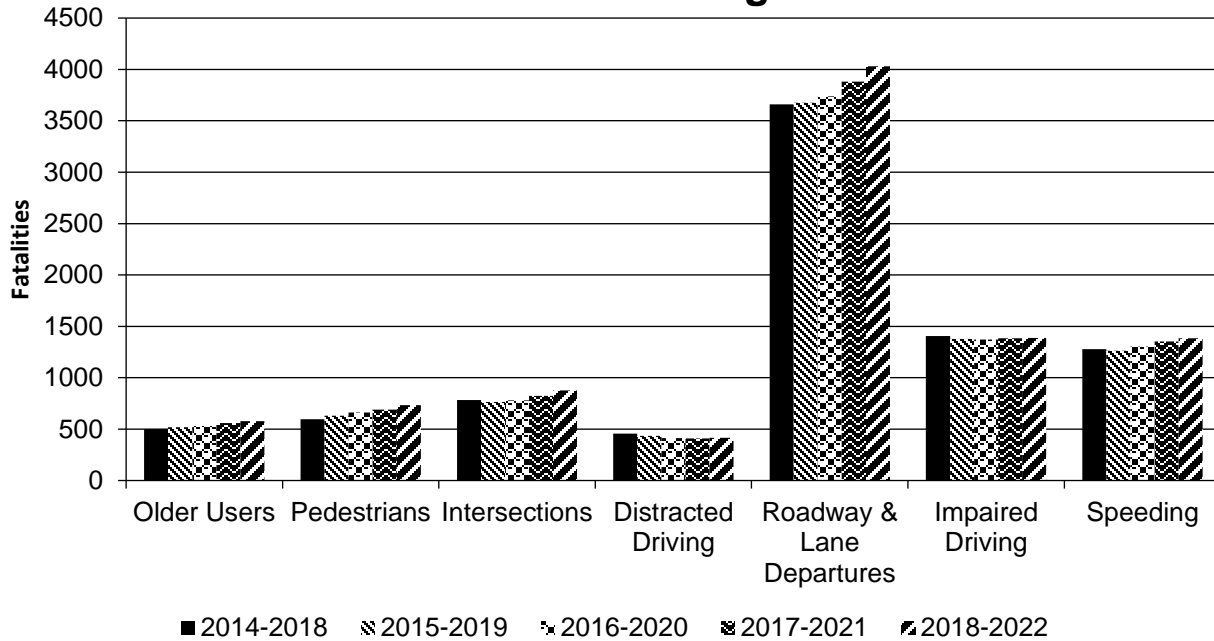
Effectiveness of Groupings or Similar Types of Improvements

Present and describe trends in SHSP emphasis area performance measures.

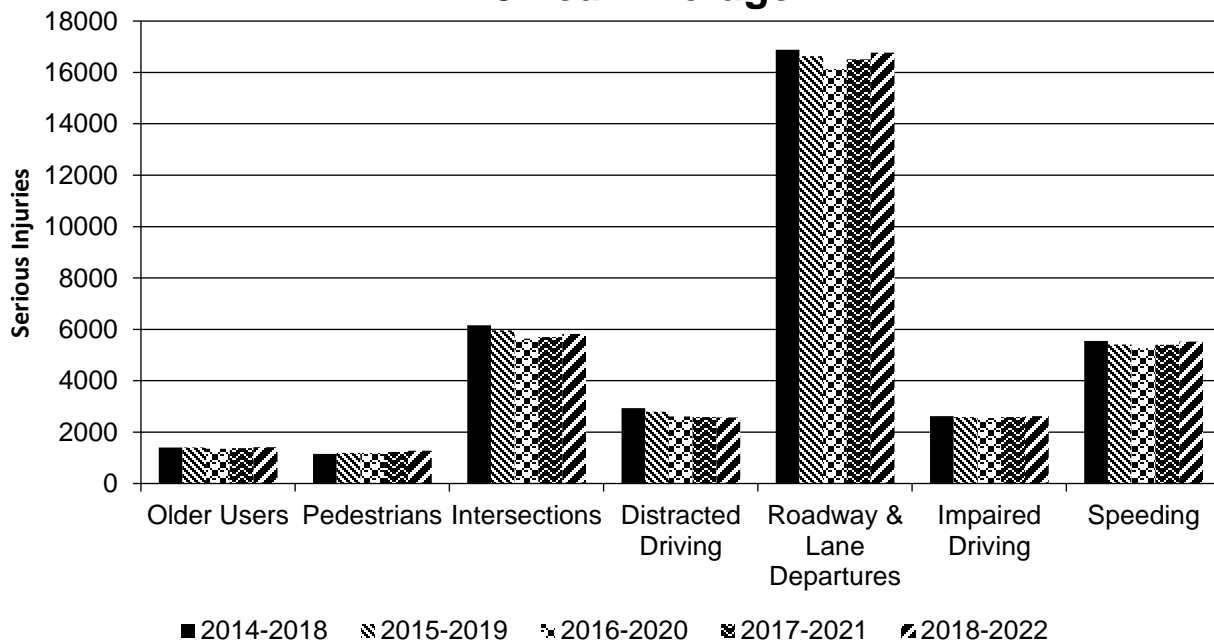
Year 2022

SHSP Emphasis Area	Targeted Crash Type	Number Fatalities (5-yr avg)	of	Number Serious Injuries (5-yr avg)	of	Fatality Rate (per HMVMT) (5-yr avg)	Serious Injury Rate (per HMVMT) (5-yr avg)
Older Users	Other (define)	579		1,419.8		0.21	0.5
Pedestrians	Vehicle/pedestrian	732		1,280.2		0.26	0.45
Intersections	Intersections	876.8		5,827.4		0.31	2.07
Distracted Driving	Other (define)	414.4		2,567		0.15	0.91
Roadway & Lane Departures	Other (define)	4,030.8		16,768		1.44	5.96
Impaired Driving	Other (define)	1,388.4		2,626.6		0.49	0.93
Speeding	Speed-related	1,384.4		5,525.2		0.49	1.96

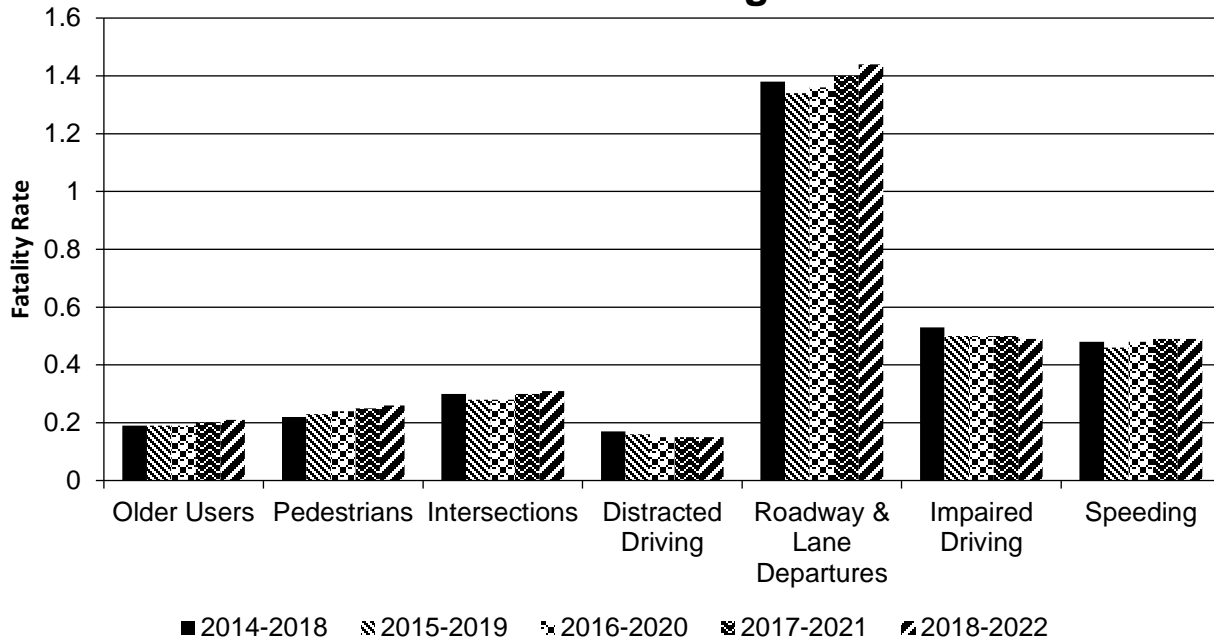
Number of Fatalities 5 Year Average



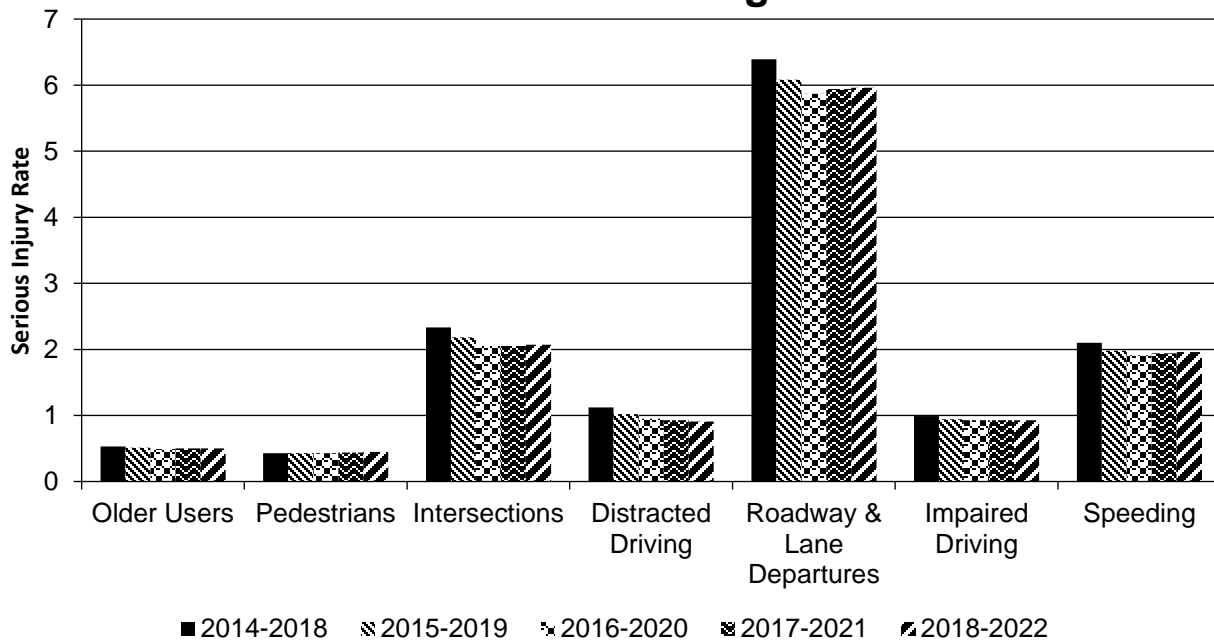
Number of Serious Injuries 5 Year Average



Fatality Rate (per HMVMT) 5 Year Average



Serious Injury Rate (per HMVMT) 5 Year Average



Older users is defined as a focus on crashes involving drivers and/or pedestrians age 65 years & older.

The Distracted Driving EA includes a range of driver distractions. It encompasses crashes where distraction in vehicle, driver inattention, or cell phone or mobile use was cited as a contributing factor.

2023 Texas Highway Safety Improvement Program

The Roadway and Lane Departures EA encompasses two crash types pertaining to difficulties with lane keeping: single motor vehicles that run off the road (SVROR) and head-on collisions. SVROR describes a crash where only one vehicle is involved and the first harmful event impact occurred on the shoulder, beyond the shoulder, or in the median of the roadway. Head-on crashes involve two motor vehicles traveling straight and in opposite directions prior to impact.

The Impaired Driving EA includes those crashes where at least one driver was identified as having been drinking, having taken medication, been under the influence of alcohol or drugs, a blood alcohol content greater than zero, or a positive drug test.

Project Effectiveness

Provide the following information for previously implemented projects that the State evaluated this reporting period.

Compliance Assessment

What date was the State’s current SHSP approved by the Governor or designated State representative?

07/25/2022

What are the years being covered by the current SHSP?

From: 2023 To: 2027

When does the State anticipate completing it’s next SHSP update?

2027

Provide the current status (percent complete) of MIRE fundamental data elements collection efforts using the table below.

*Based on Functional Classification (MIRE 1.0 Element Number) [MIRE 2.0 Element Number]

ROAD TYPE	*MIRE NAME (MIRE NO.)	NON LOCAL PAVED ROADS - SEGMENT		NON LOCAL PAVED ROADS - INTERSECTION		NON LOCAL PAVED ROADS - RAMPS		LOCAL PAVED ROADS		UNPAVED ROADS	
		STATE	NON-STATE	STATE	NON-STATE	STATE	NON-STATE	STATE	NON-STATE	STATE	NON-STATE
ROADWAY SEGMENT	Segment Identifier (12) [12]										
	Route Number (8) [8]	100	100								
	Route/Street Name (9) [9]	100	100								
	Federal Aid/Route Type (21) [21]	100	100								
	Rural/Urban Designation (20) [20]	100	100					100	100		
	Surface Type (23) [24]	100	100								
	Begin Point Segment Descriptor (10) [10]										
	End Point Segment Descriptor (11) [11]										
	Segment Length (13) [13]										
	Direction of Inventory (18) [18]	100	100								
Functional Class (19) [19]	100	100					100	100	100	100	

2023 Texas Highway Safety Improvement Program

ROAD TYPE	*MIRE NAME (MIRE NO.)	NON LOCAL PAVED ROADS - SEGMENT		NON LOCAL PAVED ROADS - INTERSECTION		NON LOCAL PAVED ROADS - RAMPS		LOCAL PAVED ROADS		UNPAVED ROADS	
		STATE	NON-STATE	STATE	NON-STATE	STATE	NON-STATE	STATE	NON-STATE	STATE	NON-STATE
	Median Type (54) [55]	100	100								
	Access Control (22) [23]	100	100								
	One/Two Way Operations (91) [93]	100	100								
	Number of Through Lanes (31) [32]	100	100					100	100		
	Average Annual Daily Traffic (79) [81]	100	100					1	1		
	AADT Year (80) [82]	100	100								
	Type of Governmental Ownership (4) [4]	100	100					100	100		
	INTERSECTION	Unique Junction Identifier (120) [110]									
	Location Identifier for Road 1 Crossing Point (122) [112]										
	Location Identifier for Road 2 Crossing Point (123) [113]										
	Intersection/Junction Geometry (126) [116]										
	Intersection/Junction Traffic Control (131) [131]										
	AADT for Each Intersecting Road (79) [81]										
	AADT Year (80) [82]										
	Unique Approach Identifier (139) [129]										
INTERCHANGE/RAMP	Unique Interchange Identifier (178) [168]										
	Location Identifier for Roadway at										

ROAD TYPE	*MIRE NAME (MIRE NO.)	NON LOCAL PAVED ROADS - SEGMENT		NON LOCAL PAVED ROADS - INTERSECTION		NON LOCAL PAVED ROADS - RAMPS		LOCAL PAVED ROADS		UNPAVED ROADS	
		STATE	NON-STATE	STATE	NON-STATE	STATE	NON-STATE	STATE	NON-STATE	STATE	NON-STATE
	Beginning of Ramp Terminal (197) [187]										
	Location Identifier for Roadway at Ending Ramp Terminal (201) [191]										
	Ramp Length (187) [177]										
	Roadway Type at Beginning of Ramp Terminal (195) [185]										
	Roadway Type at End Ramp Terminal (199) [189]										
	Interchange Type (182) [172]										
	Ramp AADT (191) [181]										
	Year of Ramp AADT (192) [182]										
	Functional Class (19) [19]										
	Type of Governmental Ownership (4) [4]										
Totals (Average Percent Complete):		77.78	77.78	0.00	0.00	0.00	0.00	44.56	44.56	20.00	20.00

*Based on Functional Classification (MIRE 1.0 Element Number) [MIRE 2.0 Element Number]

Describe actions the State will take moving forward to meet the requirement to have complete access to the MIRE fundamental data elements on all public roads by September 30, 2026.

1. Through the Traffic Records Coordinating Council, we developed an Intersection sub-committee to gather various perspectives of building and maintaining an intersection inventory.
2. TxDOT has built a draft spatial inventory of intersections (i.e., points representing an intersection) inventory and developed a 'crowd-sourcing' application to help build up the attributes for those intersections.
3. TxDOT has purchased an ArcGIS add-in called "Intersection Manager" to help manage intersection data.
4. TxDOT is working with TTI to flesh out the details with an intersection inventory by piloting two counties in Central Texas to determine how to fill the gap between a) TxDOT's automated intersection inventory generation process and b) TTI's recent work on intersection safety analyses.
5. TxDOT has moved our statewide GIS efforts to the Planning division, ensuring additional support for this cross-divisional effort.

6. The Traffic Safety Division will scale up efforts to coordinate with Planning in order to move this effort forward.

Optional Attachments

Program Structure:

HSIP Guidelines Final Copy.pdf

2015 HSIP Manual downloaded 20190830 for AR.pdf

2020 HSIP Guidelines Rev1 October 2020.pdf

2021 HSIP Guidance Final.pdf

Project Implementation:

Safety Performance:

Evaluation:

Compliance Assessment:

Glossary

5 year rolling average: means the average of five individuals, consecutive annual points of data (e.g. annual fatality rate).

Emphasis area: means a highway safety priority in a State's SHSP, identified through a data-driven, collaborative process.

Highway safety improvement project: means strategies, activities and projects on a public road that are consistent with a State strategic highway safety plan and corrects or improves a hazardous road location or feature or addresses a highway safety problem.

HMVMT: means hundred million vehicle miles traveled.

Non-infrastructure projects: are projects that do not result in construction. Examples of non-infrastructure projects include road safety audits, transportation safety planning activities, improvements in the collection and analysis of data, education and outreach, and enforcement activities.

Older driver special rule: applies if traffic fatalities and serious injuries per capita for drivers and pedestrians over the age of 65 in a State increases during the most recent 2-year period for which data are available, as defined in the Older Driver and Pedestrian Special Rule Interim Guidance dated February 13, 2013.

Performance measure: means indicators that enable decision-makers and other stakeholders to monitor changes in system condition and performance against established visions, goals, and objectives.

Programmed funds: mean those funds that have been programmed in the Statewide Transportation Improvement Program (STIP) to be expended on highway safety improvement projects.

Roadway Functional Classification: means the process by which streets and highways are grouped into classes, or systems, according to the character of service they are intended to provide.

Strategic Highway Safety Plan (SHSP): means a comprehensive, multi-disciplinary plan, based on safety data developed by a State Department of Transportation in accordance with 23 U.S.C. 148.

Systematic: refers to an approach where an agency deploys countermeasures at all locations across a system.

Systemic safety improvement: means an improvement that is widely implemented based on high risk roadway features that are correlated with specific severe crash types.

Transfer: means, in accordance with provisions of 23 U.S.C. 126, a State may transfer from an apportionment under section 104(b) not to exceed 50 percent of the amount apportioned for the fiscal year to any other apportionment of the State under that section.