



U.S. Department
of Transportation

**Federal Highway
Administration**



TANANA RIVER RECREATION AREA

Access Improvements

Agenda

Introductions

Environmental Assessment Overview

- ❖ Project Purpose & Need
- ❖ Proposed Action
- ❖ Affected Environment
- ❖ Consultation & Coordination
- ❖ Permits & Authorizations
- ❖ Commitments & Conservation Measures

Comments or questions?

Zoom Tips

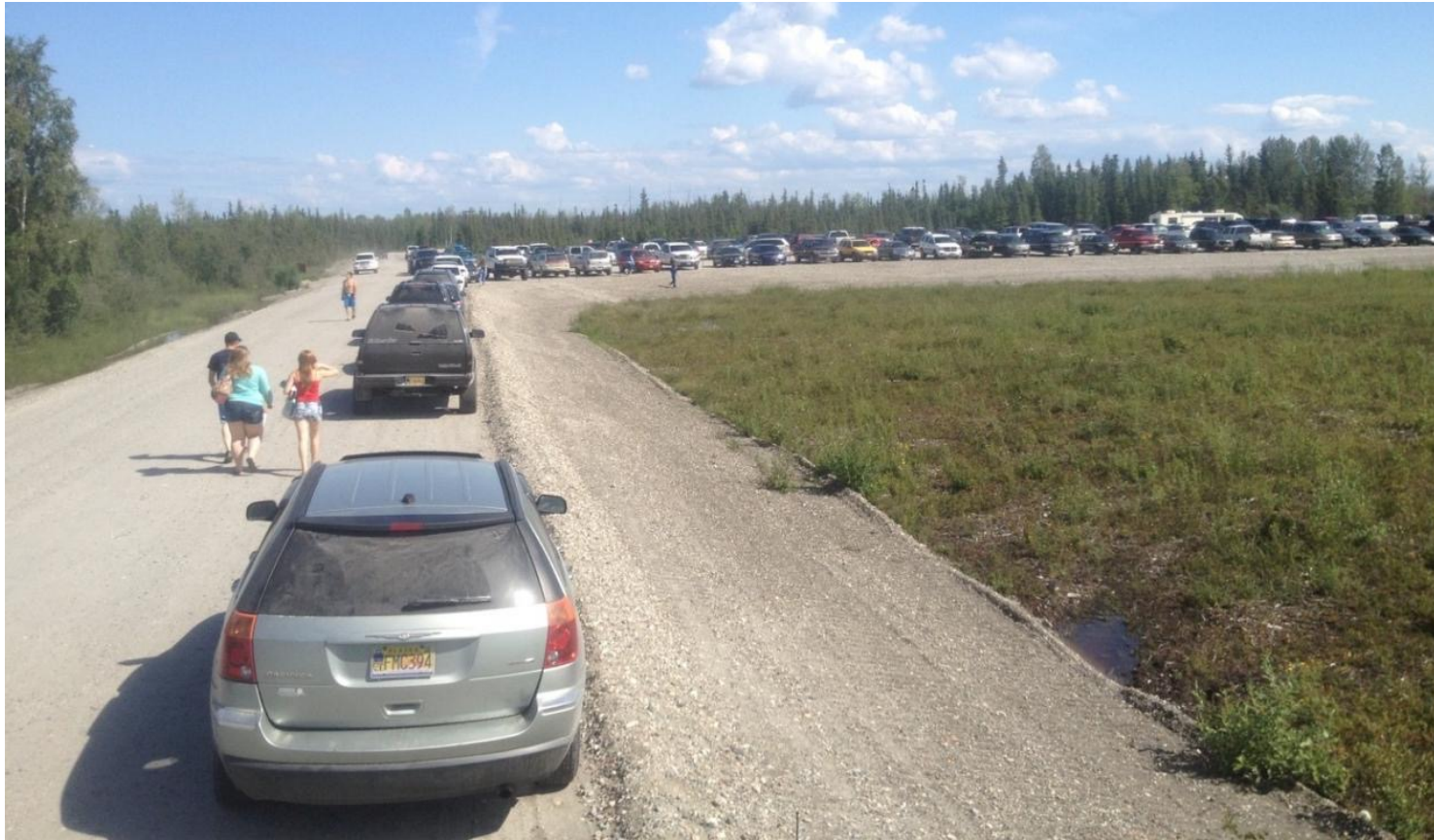
Use your first and last name (optional). Click Participants, then click your name. You should see a Rename option.

Unmute yourself, raise hand, or chat to ask a question anytime.

Turn on your video camera when you are speaking (optional).

Text Camden at 907-346-0506 or raise hand for help.

HOUSE KEEPING



PURPOSE & NEED FOR ACTION

Overflow parking on Northlake Lane looking east toward Swim Beach Parking Area.



Existing swim beach view looking north towards parking lot and chemical toilets.

PURPOSE & NEED FOR ACTION



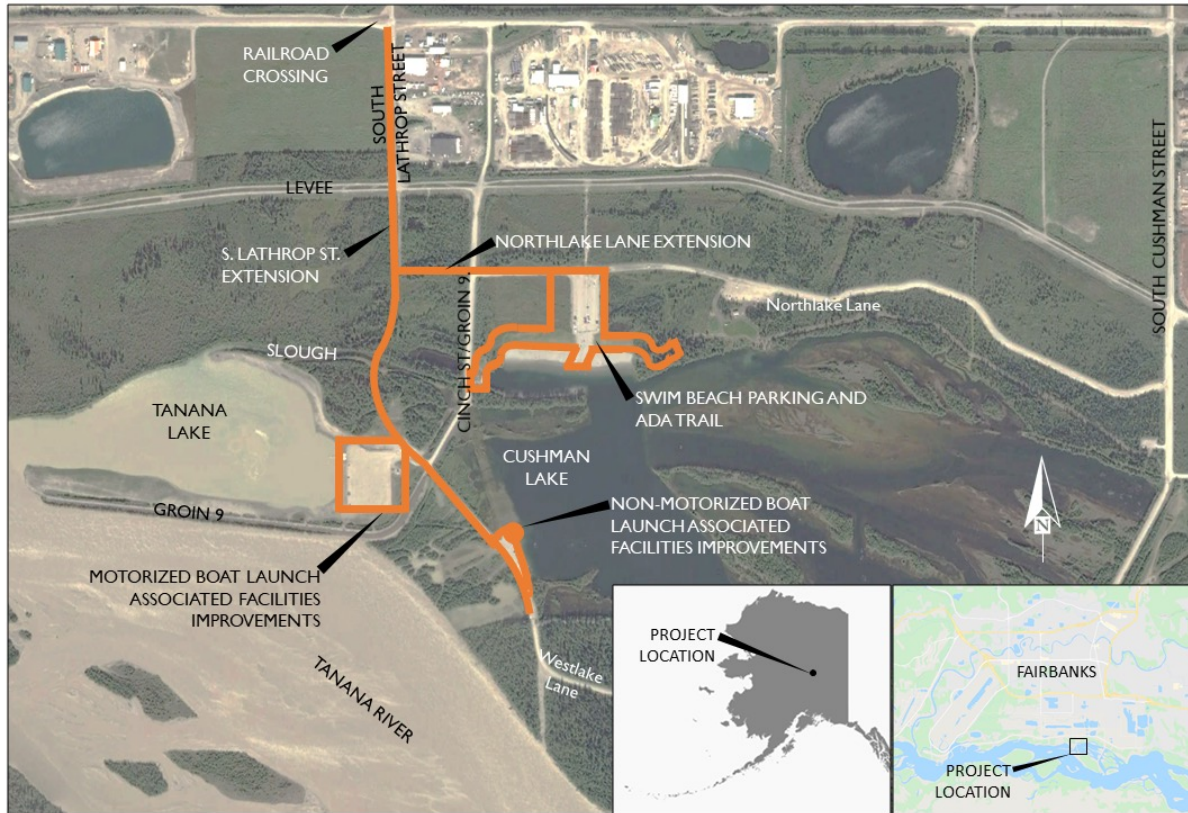
Existing dusty conditions
on Northlake Lane.

PURPOSE & NEED FOR ACTION



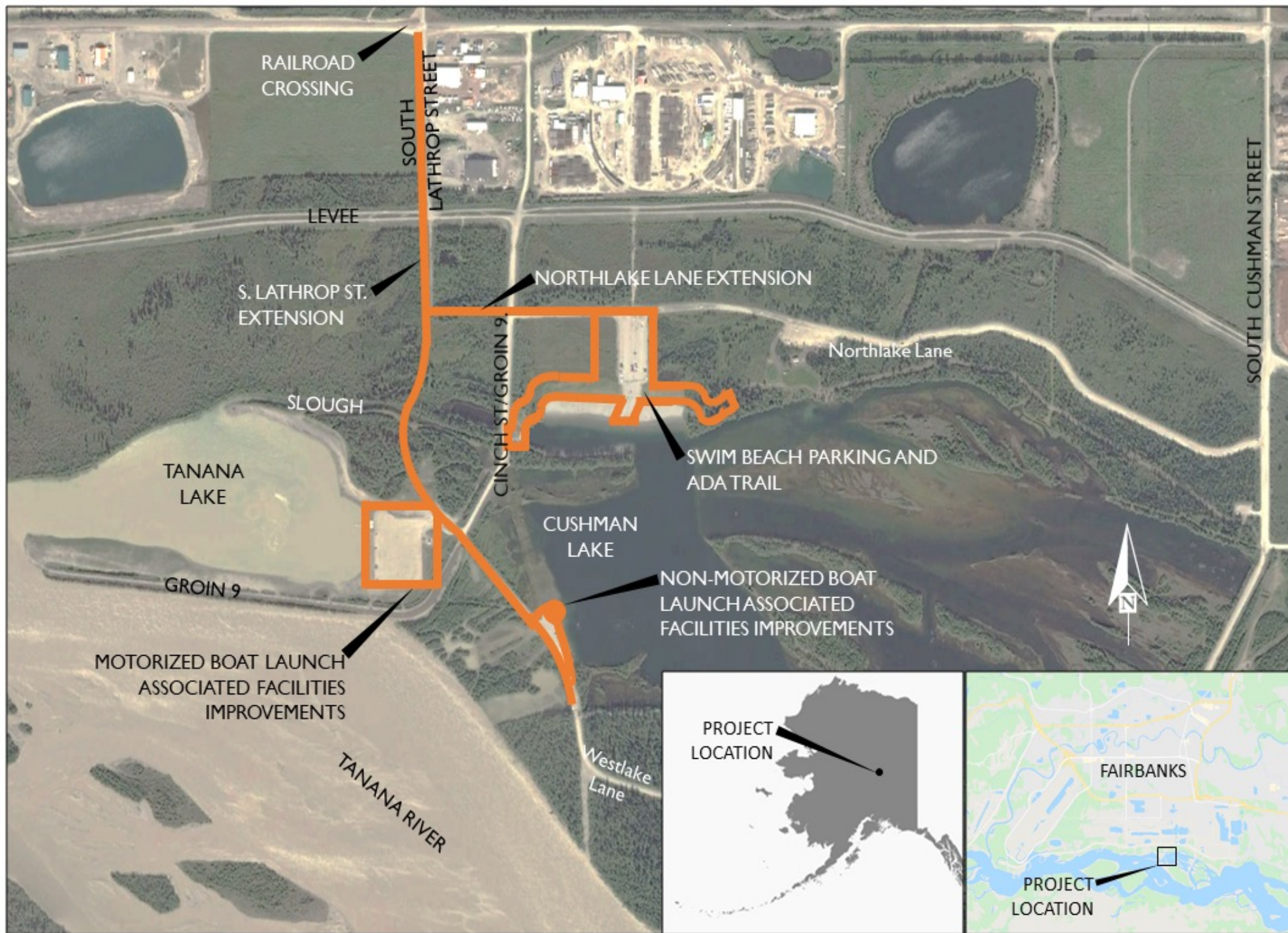
Existing winter overflow parking at the non-motorized launch ramp.

PURPOSE & NEED FOR ACTION



PROPOSED ACTION

- ❖ Complete a new and shorter route via South Lathrop Street.
- ❖ Provide a location for a new entrance station.
- ❖ Construct a connection between Northlake Lane and South Lathrop Street.
- ❖ Expand the swim beach parking lot.
- ❖ Pave South Lathrop and the boat launch parking areas.
- ❖ Install ADA-compliant parking and access.
- ❖ Add new restrooms.
- ❖ Extend power into the park and provide electrical outlets for engine block heaters at the launch ramps.





Existing South Lathrop Street.

Proposed South Lathrop Street extension.

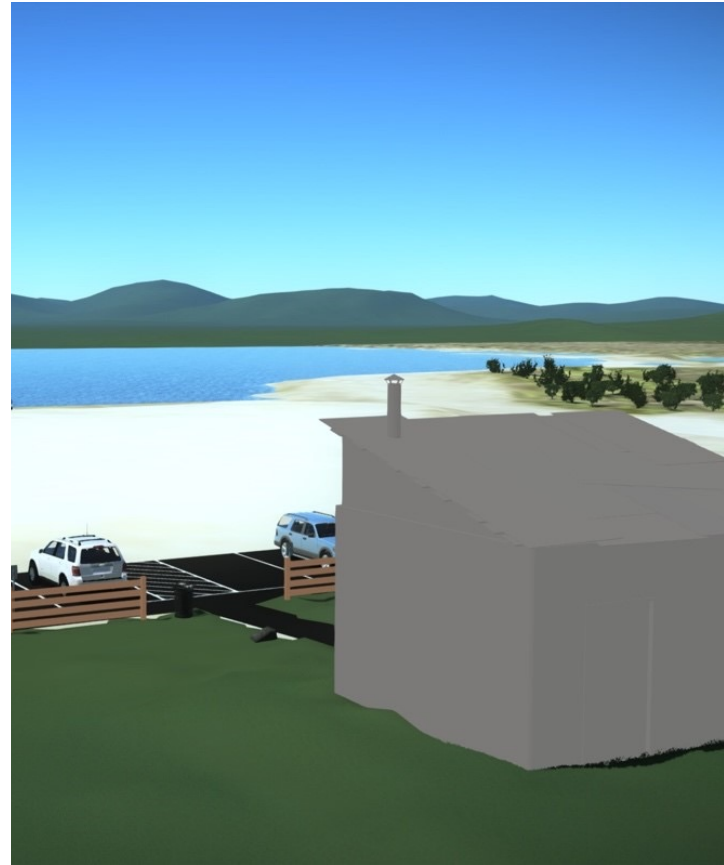
PROPOSED ACTION



PROPOSED ACTION

Existing area west of Northlake Lane.

Proposed connection between Northlake Lane and South Lathrop Street.



Existing boat launch area, parking, and vault restrooms.

Proposed boat launch area, parking, and vault restrooms.

PROPOSED ACTION



Existing swim beach.

Proposed beach access,
ADA parking, and vault
restrooms.

PROPOSED ACTION

PROPOSED ACTION

An example of a seasonal ADA beach access mat.



AFFECTED ENVIRONMENT

This chapter describes the environmental consequences of the project.

Temporary construction delays.

Temporary construction impacts to soil and water.

Loss of approximately 3 acres of wetlands.

Increase in impervious surfaces (pavement).

PCPs from treated poles can impact water quality.

Loss of approximately 8 acres of wildlife habitat.

Support community economic goals by providing better access.

Potential inadvertent discovery of cultural materials.

Dust, noise, and vehicle emissions during construction.

COMMITMENTS & CONSERVATION MEASURES

The purpose of these measures is to avoid, minimize, or mitigate potential impacts to resources.

Design erosion and sediment control measures.

Design installation of culverts and/or drainage mats.

Offset impacts with mitigation land bank or fees.

Communicate construction schedule in advance.

Install new signage for the new entrance.

Do not store fuel within 100 feet of wetlands.

Maintain access during construction.

Reduce storm water runoff with silt fencing/fiber rolls.

Treat PCP poles offsite.

Stabilize and revegetate disturbed areas.

Avoid disturbing nesting birds.

Use plant-based tackifiers or water to control dust.



PERMITS & AUTHORIZATIONS

PERMITS & AUTHORIZATIONS

Federal Highway Administration

- ✓ Section 4(f) Net Benefit Programmatic Evaluation completed June 2021

US Army Corps of Engineers/AK Department of Environmental Conservation

- Section 401 Water Quality Certification
- Section 402, Section 301(a), National Pollutant Discharge Elimination System/AK Pollutant Discharge Elimination System
- Excavation Dewatering General Permit Antidegradation Analysis
- Section 404 regulates the discharge of dredged and fill material into waters of the U.S., including wetlands
- Section 408 Authorization provides USACE may grant permission to alter a Civil Works project

Alaska Department of Natural Resources

- Section 106, Modification Under Review
- Temporary Water Use Authorization
- Tanana Basin Area RMZ Easement Vacation

Fairbanks North Star Borough

- Floodplain Permit
- Floodway No-Rise Certification Excavation within 250- feet of Levee Centerline

Alaska Railroad Corporation

- Right-of-way Temporary construction

CONSULTATION & COORDINATION

Pre-application meeting with US Army Corp of Engineers, June 2020, January 2021.

Consultation with Alaska State Historic Preservation Office, January 2021.

Transportation Interagency Group meeting, March 2021.

Request for tribal consultation, October 2020 and January 2021.

Public meeting, July 2021.

NEXT STEPS



COMMENTS OR QUESTIONS?

Unmute yourself to speak or raise your hand.

(Raise hand by clicking reaction button at the bottom on a computer or three dots on a smart phone.)

The comment period for the draft environmental document closes on August 2. To comment in writing, email brandon.stokes@dot.gov.