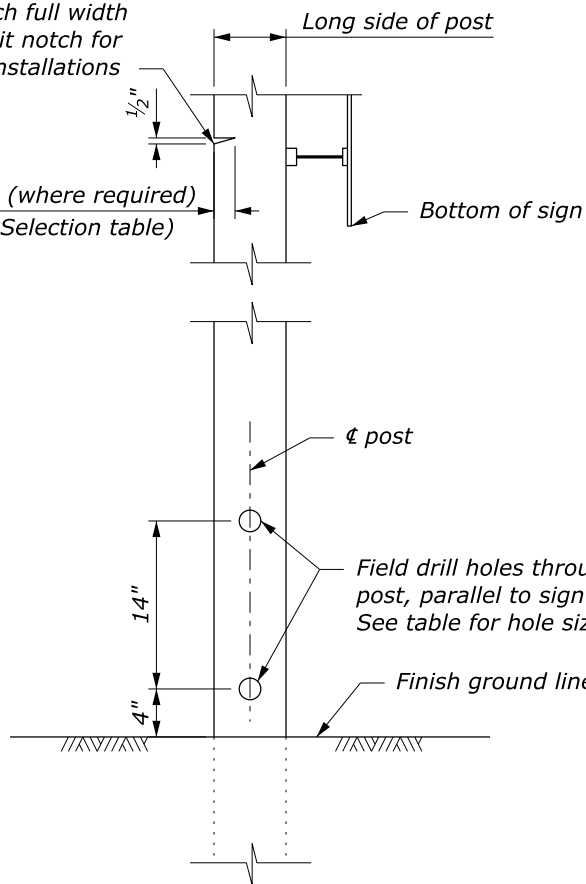
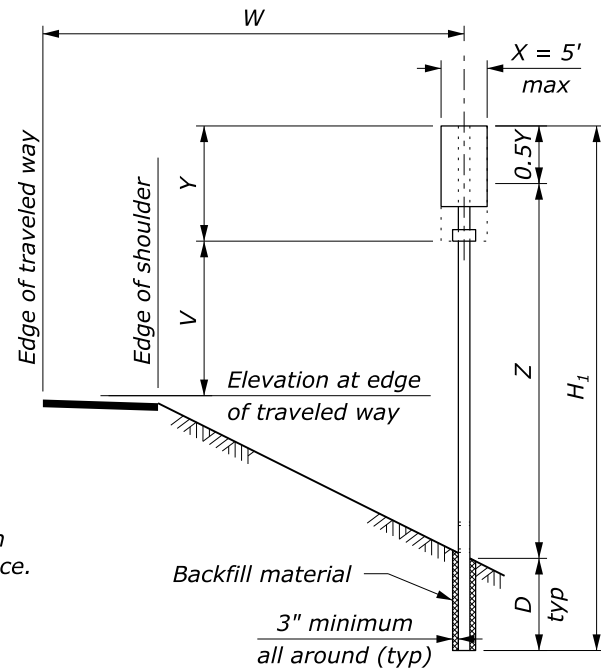


Saw cut notch full width of post. Omit notch for single post installations

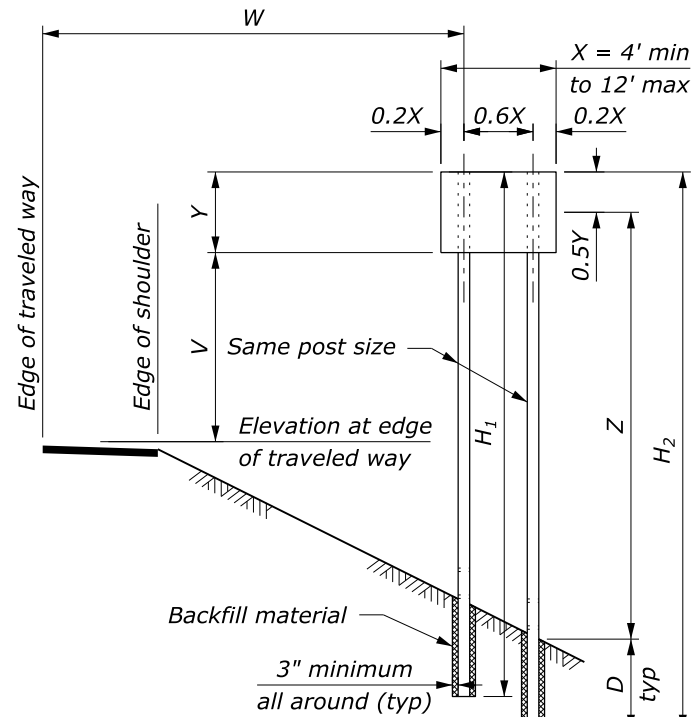
Notch depth (where required)  
(See Post Selection table)



**POST DETAIL**



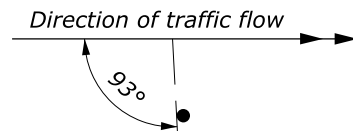
**SINGLE POST SIGNS**



**TWO POST SIGNS**

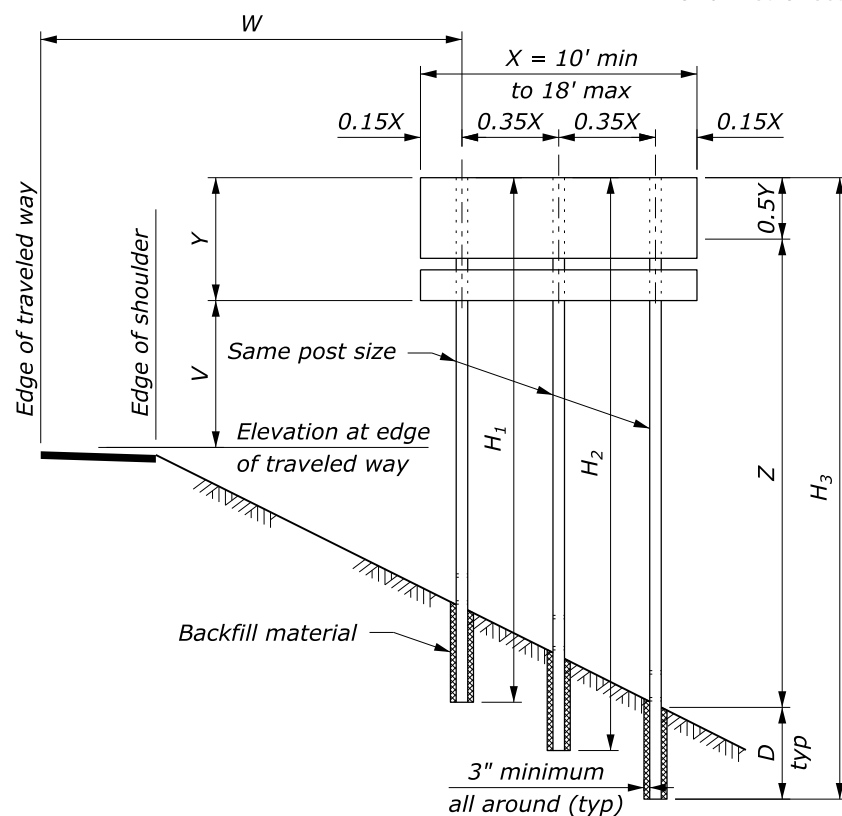
**SIGN INSTALLATION ANGLE**

For all retroreflectorized signs where  $W > 25'$

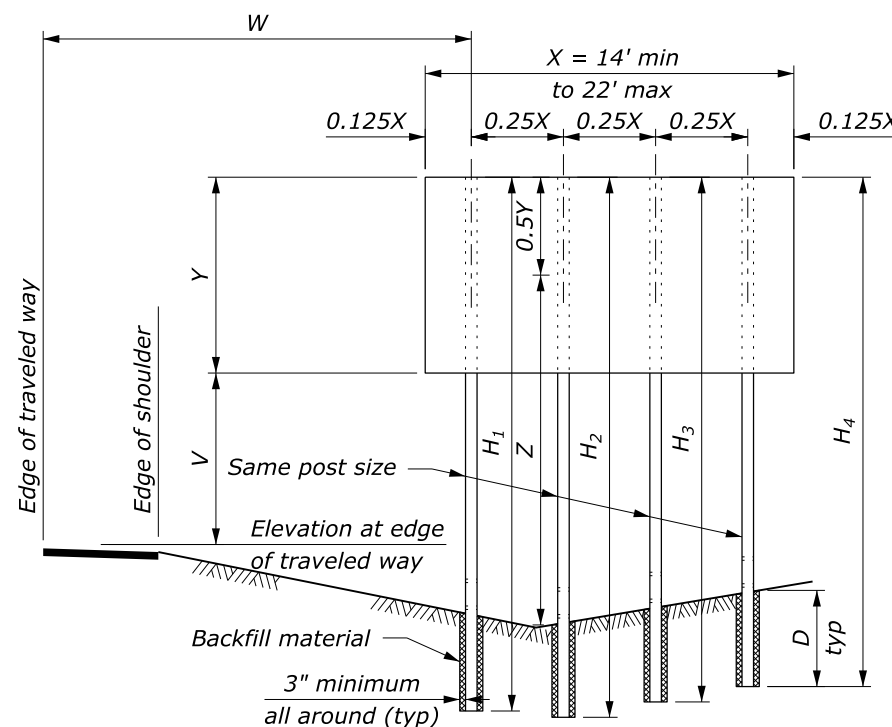


MINIMUM DISTANCE TO SIGN		
Location	Lateral Offset (W)	Mounting Height (V)
Rural Districts	6 ft	5 ft
Business or Residence Districts	2 ft from curb	7 ft

V may be reduced by 1 foot in rural districts for a secondary sign mounted below another sign.



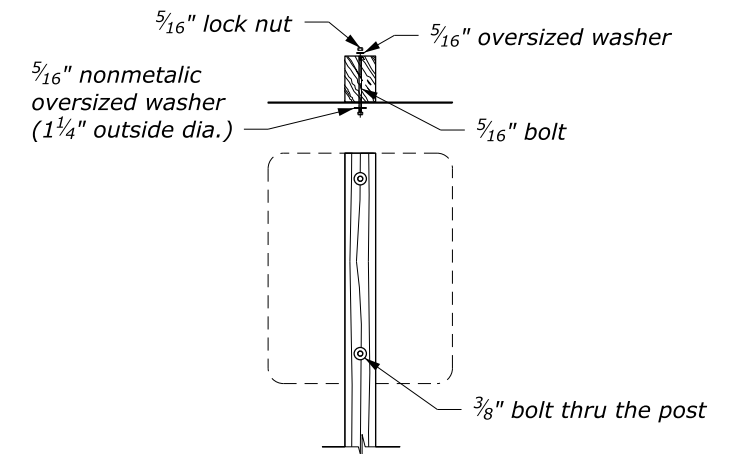
**THREE POST SIGNS**



**FOUR POST SIGNS**

**NOTE:**

1. Provide traffic barrier protection for all posts larger than 6 x 8 inches when located within the clear zone or if the post is vulnerable to being struck when placed outside the clear zone.
2.  $H_1$  thru  $H_4$  indicate overall post length. Select post lengths to fit field conditions.
3. D is the minimum post embedment depth for average soil conditions. See Wood Post Selection Table below.
4. Z is the height from ground line to mid-height of sign at the longest post.
5. For the purpose of post selection X and Y are as follows:
  - Overall dimensions of the sign for a single sign, or back to back signs
  - Dimensions of a rectangle enclosing all the signs for multiple sign installations.



**TYPICAL MOUNTING FOR SIGNS WITHOUT ANGLES**

POST SIZE (inch)	NUMBER OF POSTS				D	Notch depth and hole diameter
	1	2	3	4		
	Product of X-Y-Z in CUFT					
4 x 4	80	155	235	310	3'-0"	-
4 x 6	180	385	545	725	4'-0"	1 3/4"
6 x 6	235	475	710	950	4'-0"	1 3/4"
6 x 8	300	850	1280	1700	4'-0"	2 1/2"
6 x 10	385	1180	1170	2360	5'-0"	-
8 x 10	575	1610	2410	3215	5'-0"	-
8 x 12	775	2310	3465	4620	6'-0"	-

Values shown are the maximum permitted. If the product of XYZ exceeds the limit for the largest post, use steel post installation.

NO SCALE

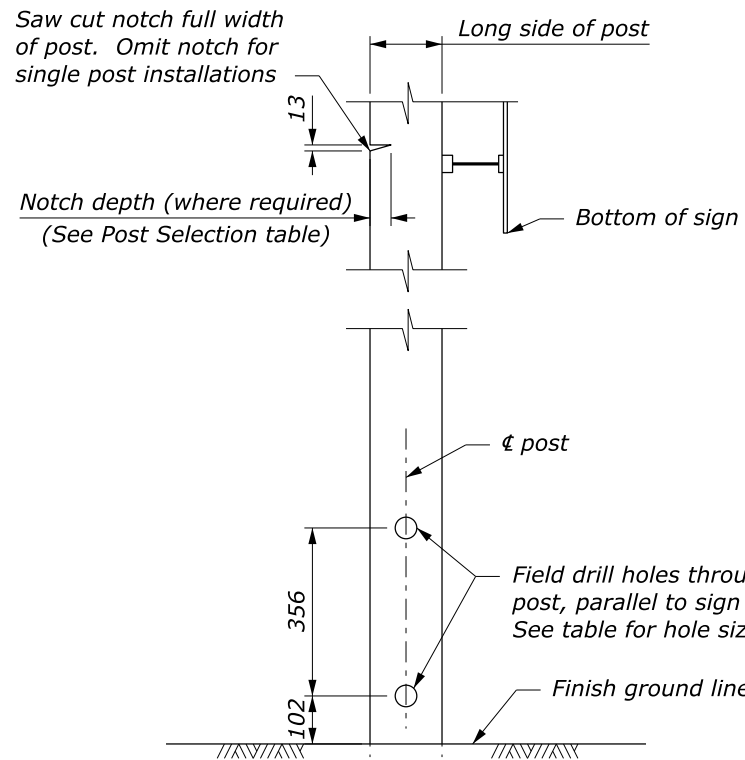
U.S. DEPARTMENT OF TRANSPORTATION, FHWA  
OFFICE OF FEDERAL LANDS HIGHWAY

**PERMANENT SIGN  
INSTALLATION  
WOOD POSTS**

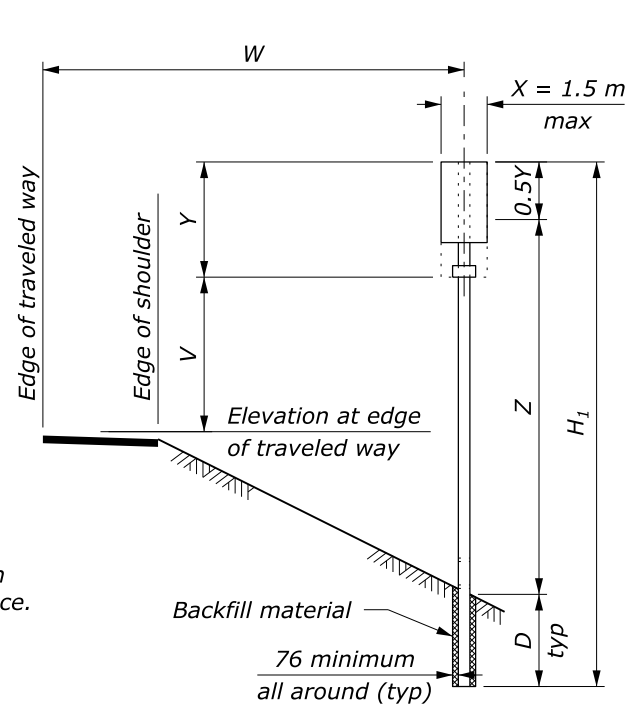
WFLHD DETAIL  
W633-7

SPECIFICATION  
FP-24, FP-14

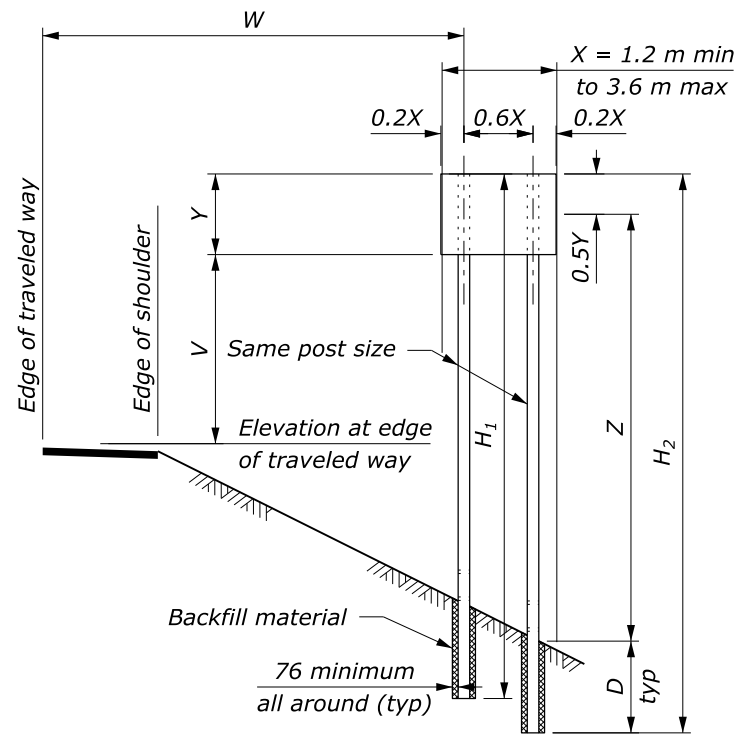
APPROVED FOR USE  
9/2024



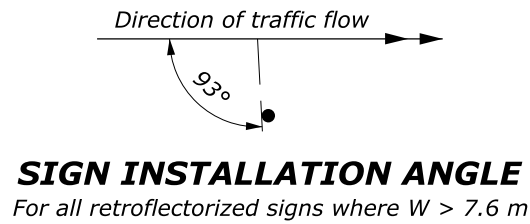
**POST DETAIL**



**SINGLE POST SIGNS**



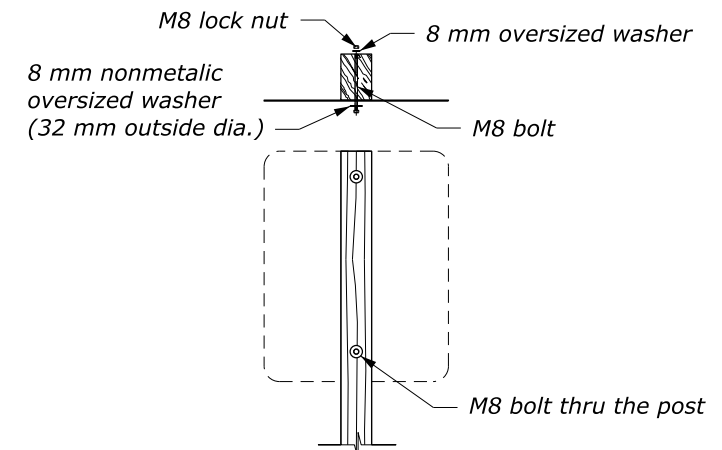
**TWO POST SIGNS**



MINIMUM DISTANCE TO SIGN		
Location	Lateral Offset (W)	Mounting Height (V)
Rural Districts	1.8 m	1.5 m
Business or Residence Districts	0.6 m from curb	2.1 m

V may be reduced by 0.3 m in rural districts for a secondary sign mounted below another sign.

- NOTE:**
1. Provide traffic barrier protection for all posts larger than 150 x 200 mm when located within the clear zone or if the post is vulnerable to being struck when placed outside the clear zone.
  2.  $H_1$  thru  $H_4$  indicate overall post length. Select post lengths to fit field conditions.
  3. D is the minimum post embedment depth for average soil conditions. See Wood Post Selection Table below.
  4. Z is the height from ground line to mid-height of sign at the longest post.
  5. For the purpose of post selection X and Y are as follows:
    - Overall dimensions of the sign for a single sign, or back to back signs
    - Dimensions of a rectangle enclosing all the signs for multiple sign installations.

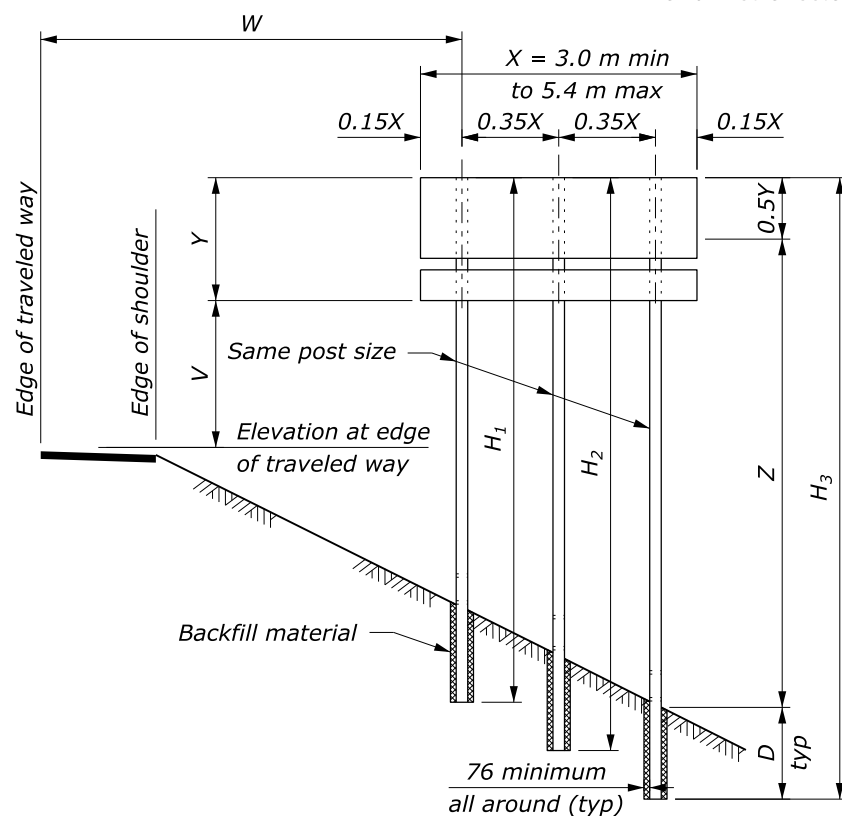


**TYPICAL MOUNTING FOR SIGNS WITHOUT ANGLES**

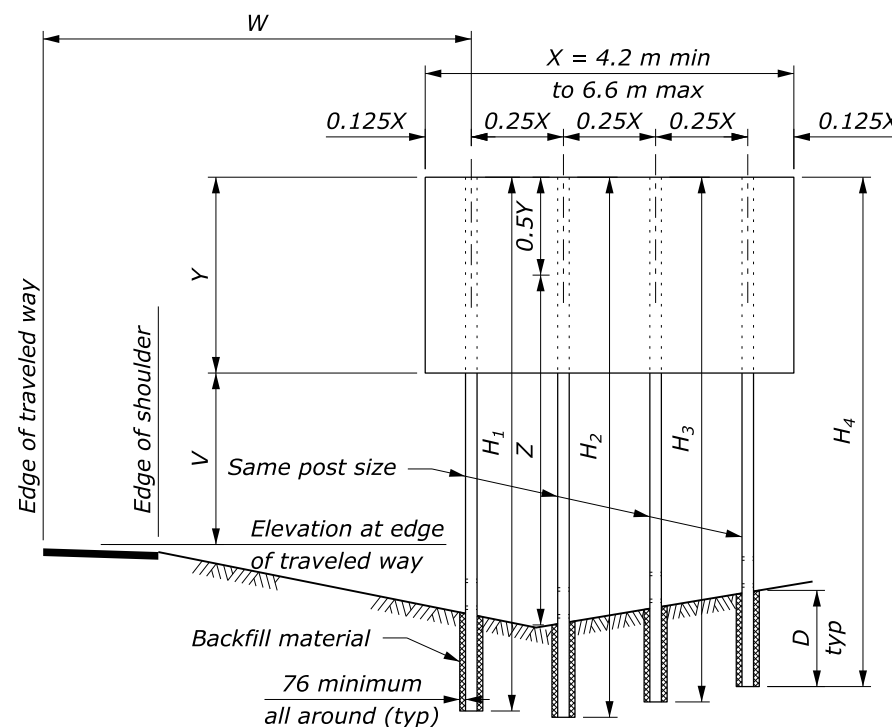
POST SIZE (mm)	NUMBER OF POSTS				D (m)	Notch depth and hole diameter
	1	2	3	4		
	Product of X-Y-Z (m3)					
100 x 100	2.2	4.3	6.6	18.7	0.9	-
100 x 150	5.0	10.8	15.3	20.3	1.2	45 mm
150 x 150	6.6	13.3	19.9	26.6	1.2	45 mm
150 x 200	8.4	23.8	35.8	47.6	1.2	65 mm
150 x 250	10.8	33.0	49.6	66.1	1.5	-
200 x 250	16.1	45.1	67.5	90.0	1.5	-
200 x 300	21.7	64.7	97.0	129.4	1.8	-

Values shown are the maximum permitted. If the product of XYZ exceeds the limit for the largest post, use steel post installation.

This drawing contains **Metric** units of measure. Dimensions without units are millimeters.



**THREE POST SIGNS**



**FOUR POST SIGNS**

NO SCALE

U.S. DEPARTMENT OF TRANSPORTATION, FHWA OFFICE OF FEDERAL LANDS HIGHWAY	WFLHD DETAIL WM633-7
<b>PERMANENT SIGN INSTALLATION WOOD POSTS</b>	SPECIFICATION FP-24, FP-14
	APPROVED FOR USE 9/2024