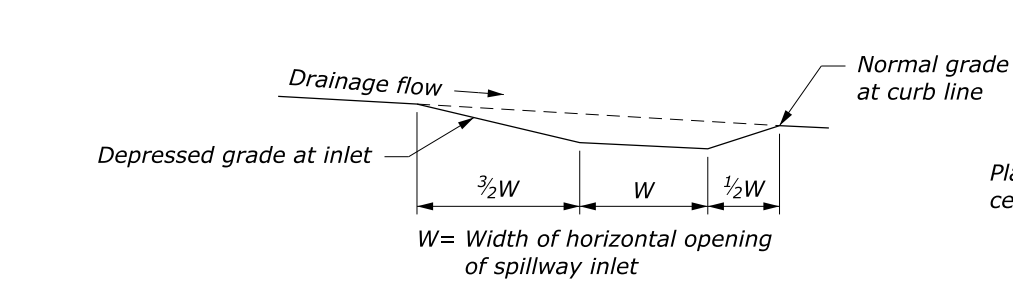
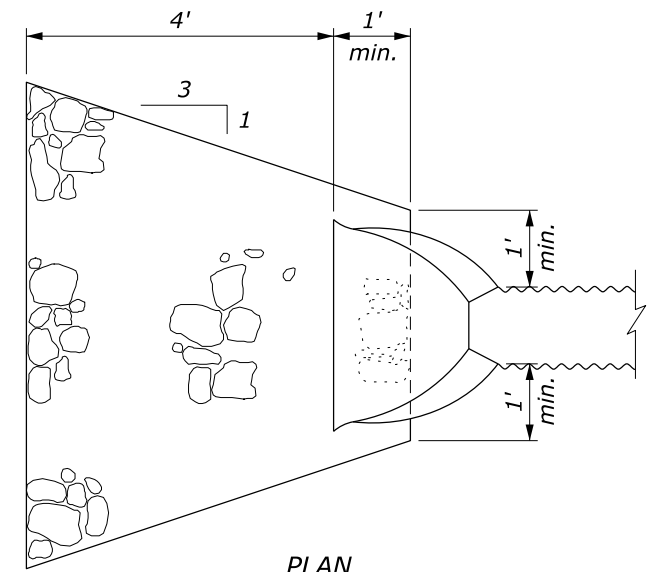
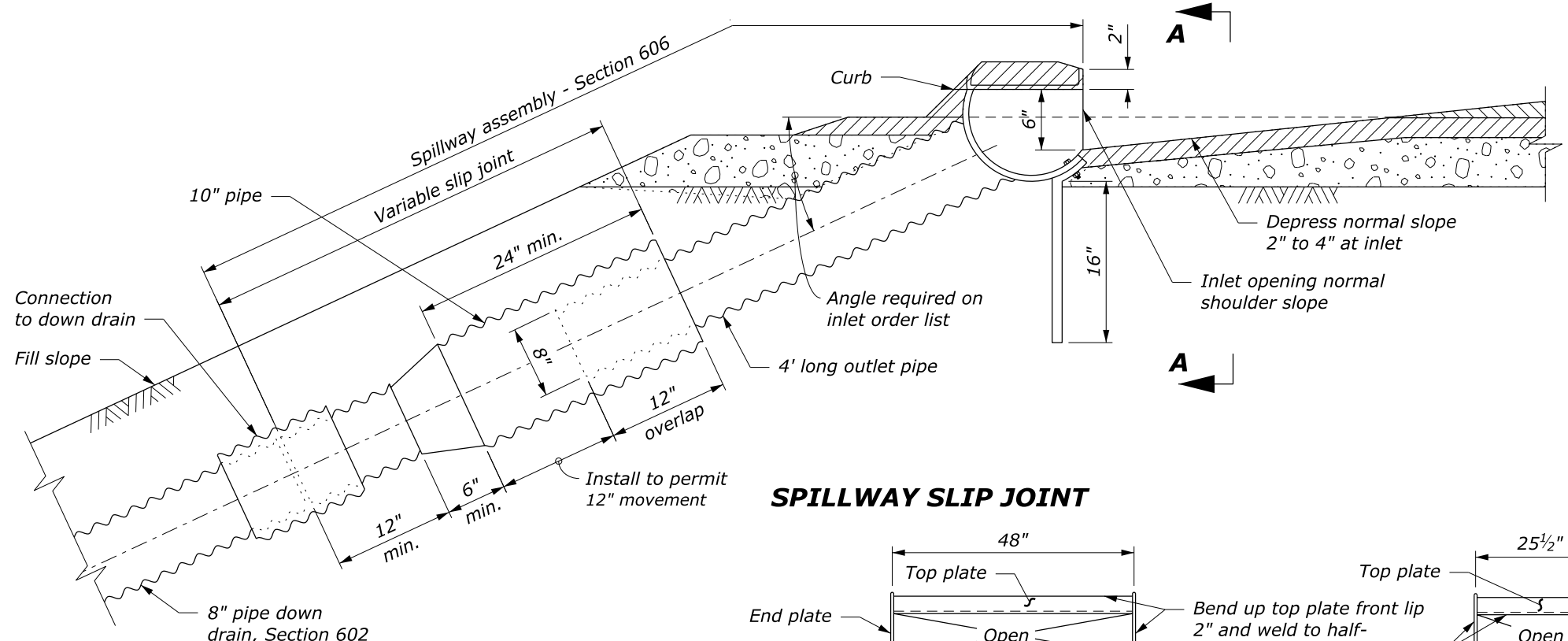
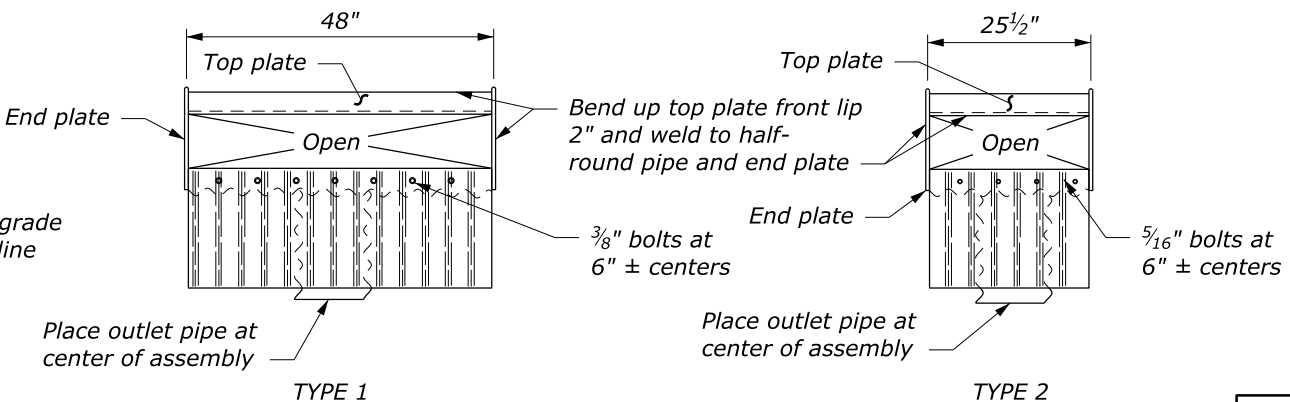


NOTE:

1. Fabricate half-round pipe, outlet pipe, and curtain wall for spillway assembly from 0.64-inch galvanized steel or 0.60-inch aluminum. Fabricate top plate and end plate from 0.18-inch flat steel or 0.20 inch aluminum plate.
2. Make all coupling band connections watertight by placing a $\frac{3}{16}$ - inch bead of approved caulking under each half of the band before tightening.
3. Install pipe anchor assemblies at 10 feet \pm spacing on down drain installed above ground.
4. Use type 2 spillway assembly inlets where profile grades are greater than 2%. Use type 1 on grades 2% or flatter.
5. Place class 2 riprap conforming to Section 251 for protective apron.
6. Approved alternate designs may be used.
7. See Detail W606-14 for Pipe Anchor Assembly Detail.



SPILLWAY SLIP JOINT

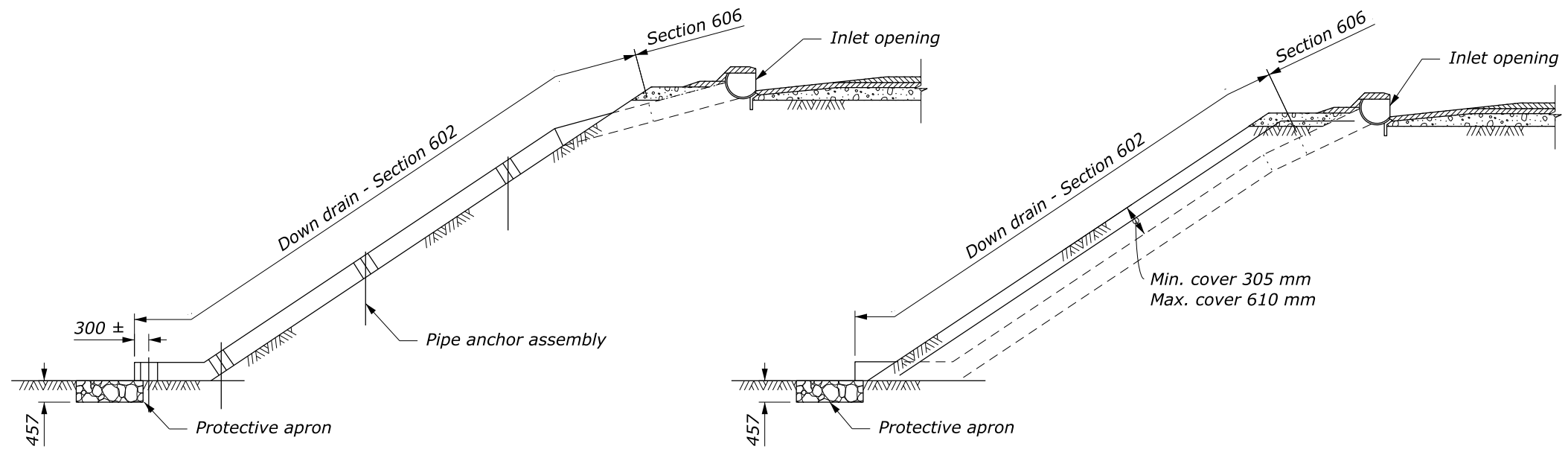


**SECTION A-A
SPILLWAY ASSEMBLY INLETS**

NO SCALE

U.S. DEPARTMENT OF TRANSPORTATION, FHWA OFFICE OF FEDERAL LANDS HIGHWAY	WFLHD DETAIL W606-13
CORRUGATED METAL SPILLWAYS AND INLETS	SPECIFICATION FP-24, FP-14 APPROVED FOR USE 10/2009

c:\pwwork\dm60747\W606-13.dgn [Det. W606-13] 23 October 2024 6:28 AM

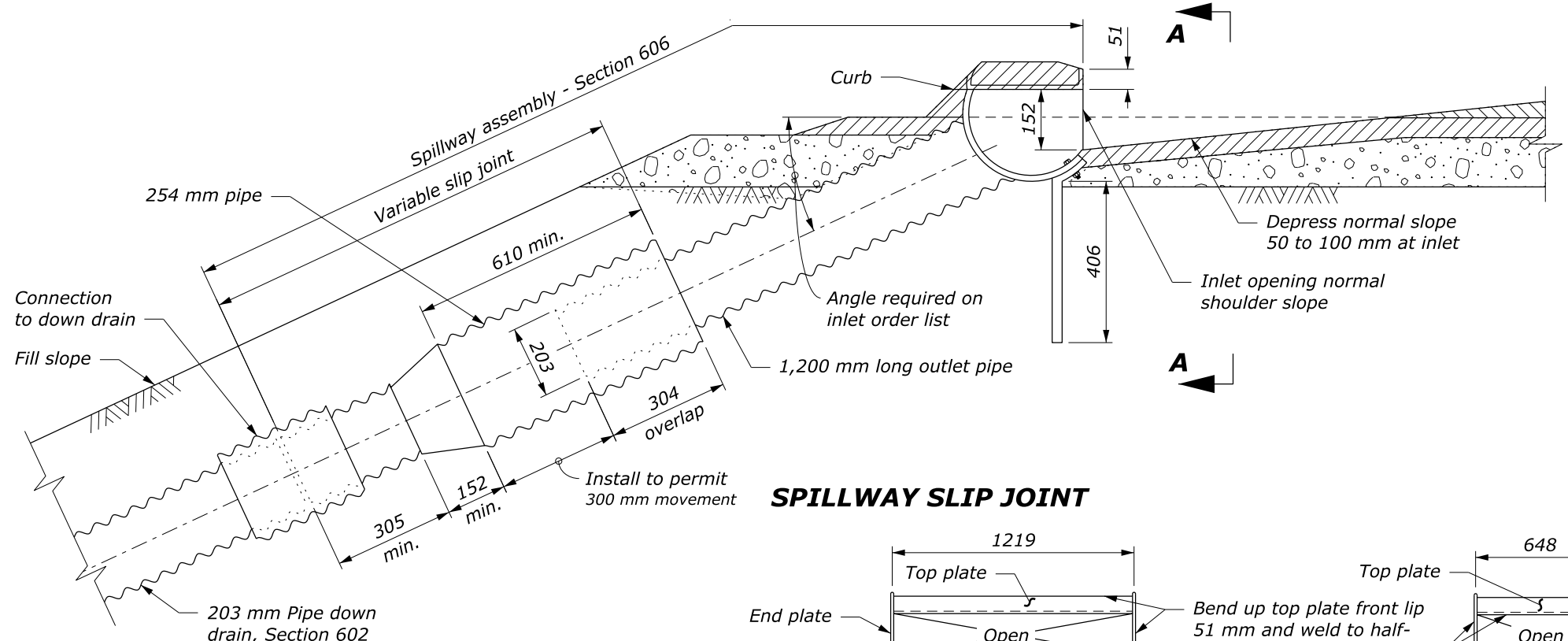


SPILLWAY ASSEMBLY WITH SURFACE DOWN DRAIN

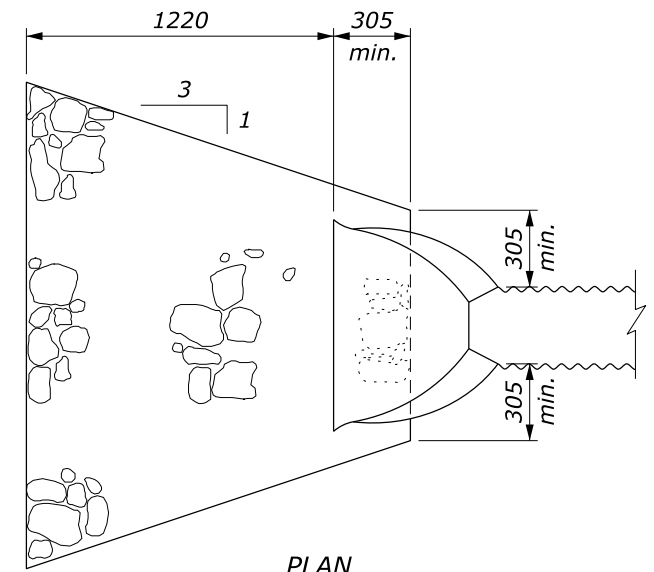
SPILLWAY ASSEMBLY WITH BURIED DOWN DRAIN

NOTE:

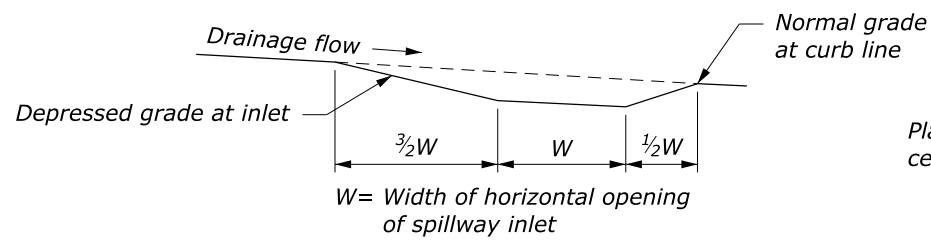
1. Fabricate half-round pipe, outlet pipe, and curtain wall for spillway assembly from 1.6-mm galvanized steel or 1.5-mm aluminum. Fabricate top plate and end plate from 4.6-mm flat steel or 5.0-mm aluminum plate.
2. Make all coupling band connections watertight by placing a 5-mm bead of approved caulking under each half of the band before tightening.
3. Install pipe anchor assemblies at 3 meters ± spacing on down drain installed above ground.
4. Use type 2 spillway assembly inlets where profile grades are greater than 2%. Use type 1 on grades 2% or flatter.
5. Place class 2 riprap conforming to Section 251 for protective apron.
6. Approved alternate designs may be used.
7. See Detail WM606-14 for Pipe Anchor Assembly Detail.
8. Furnish hardware in the metric sizes shown. Equivalent US Customary sizes may be used when metric sizes are unavailable.



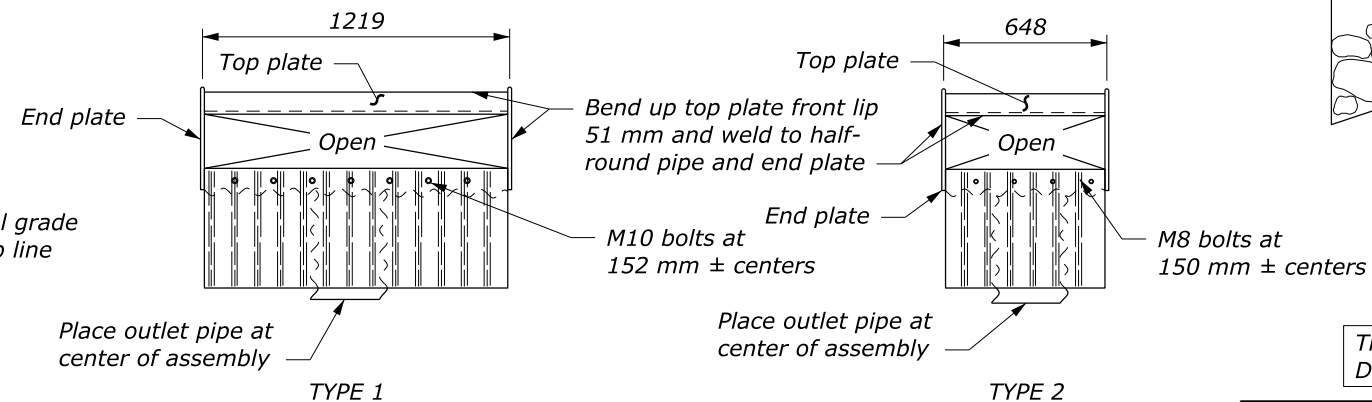
SPILLWAY SLIP JOINT



PLAN PROTECTIVE APRON



SCHEMATIC PROFILE OF INLET BASIN



SECTION A-A SPILLWAY ASSEMBLY INLETS

This drawing contains **Metric** units of measure. Dimensions without units are millimeters.

NO SCALE

U.S. DEPARTMENT OF TRANSPORTATION, FHWA OFFICE OF FEDERAL LANDS HIGHWAY	WFLHD DETAIL WM606-13
CORRUGATED METAL SPILLWAYS AND INLETS	SPECIFICATION FP-24, FP-14
	APPROVED FOR USE 10/2009

c:\pwwork\0413405\W606-13.dgn [Det WM606-13] 21 October 2024 4:01 PM