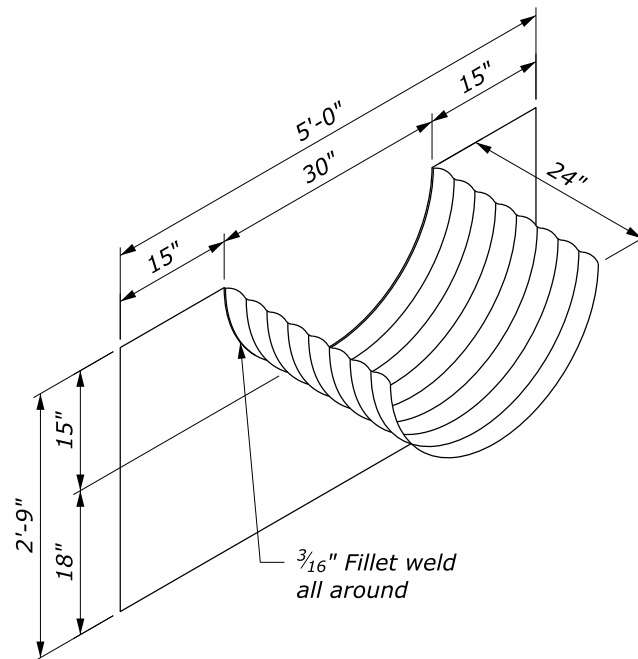


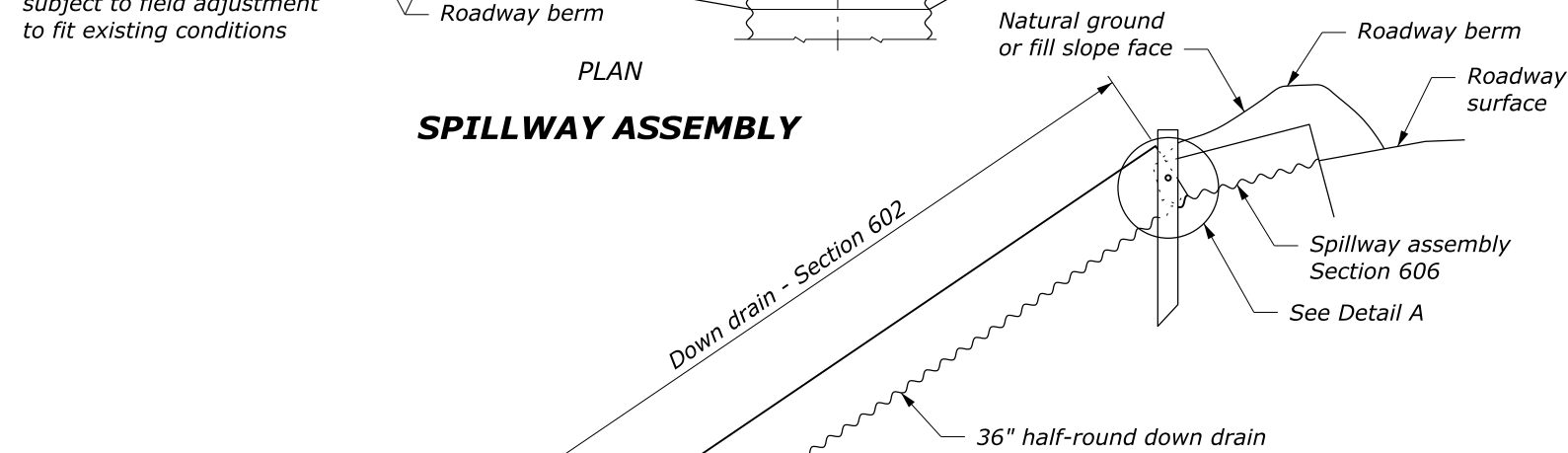
Dimensions shown are subject to field adjustment to fit existing conditions

PLAN

SPILLWAY ASSEMBLY



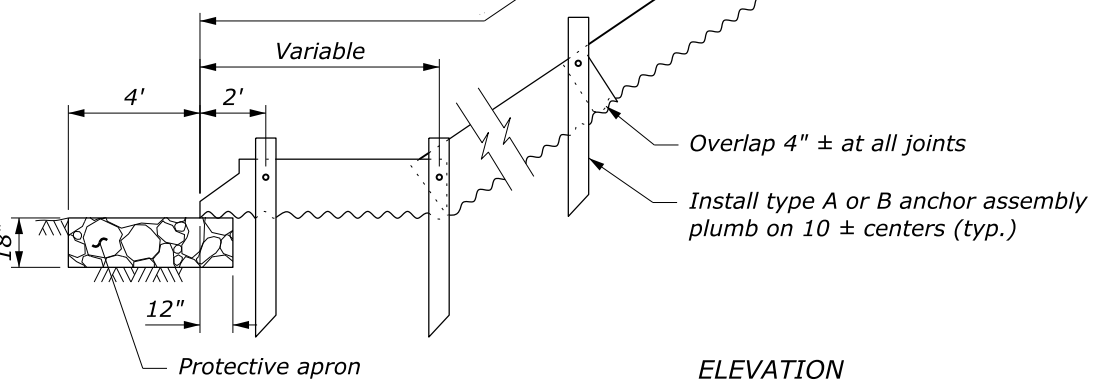
SPILLWAY ASSEMBLY



Down drain - Section 602

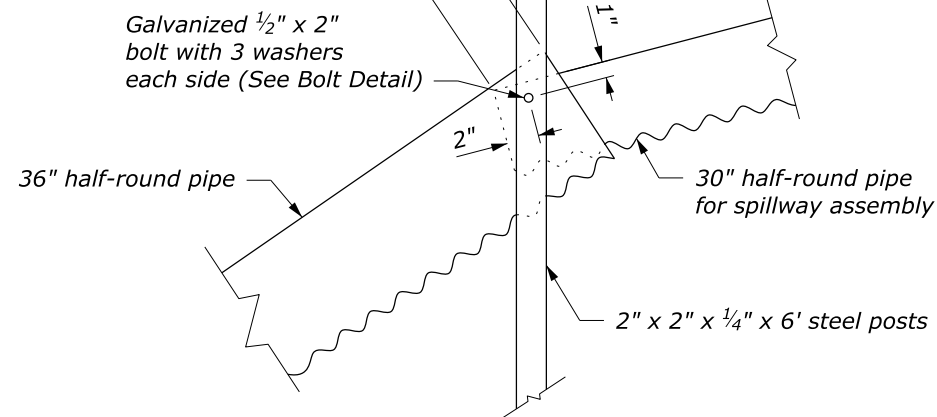
Spillway assembly Section 606
See Detail A

36" half-round down drain

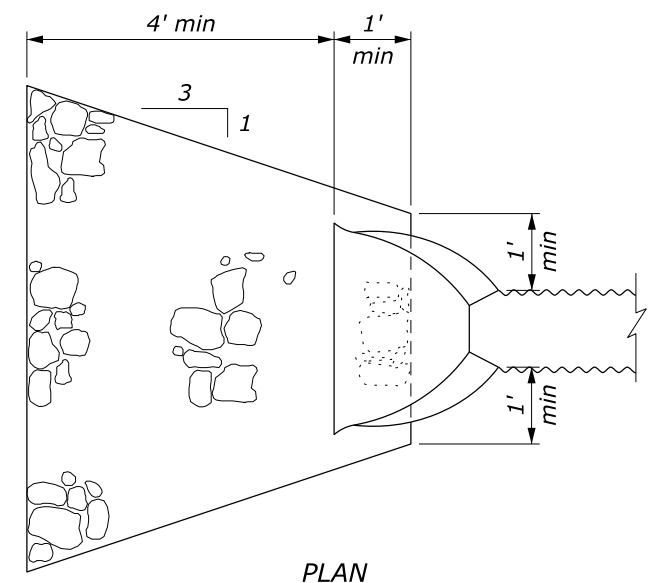


ELEVATION

SPILLWAY ASSEMBLY AND DOWN DRAIN

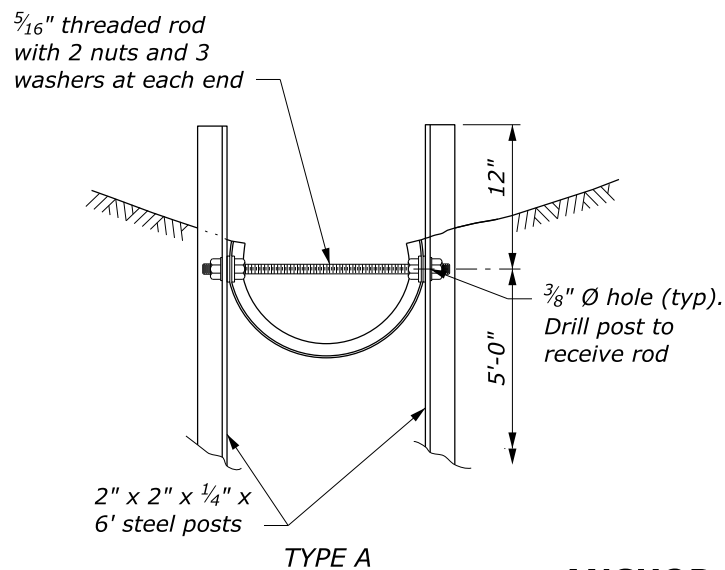


DETAIL A



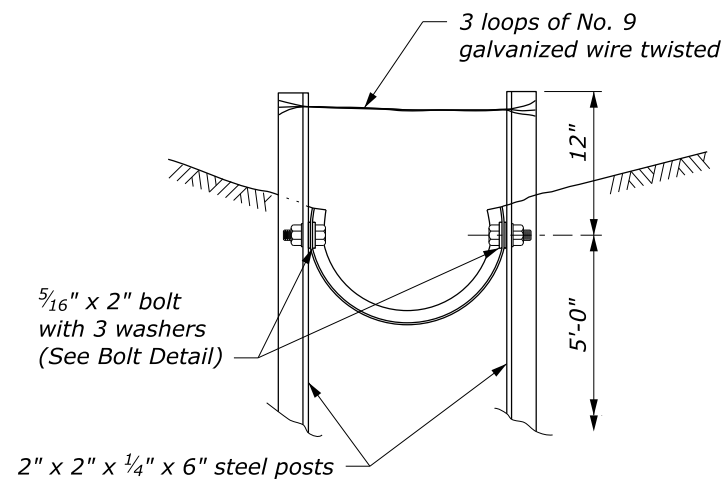
PLAN

PROTECTIVE APRON

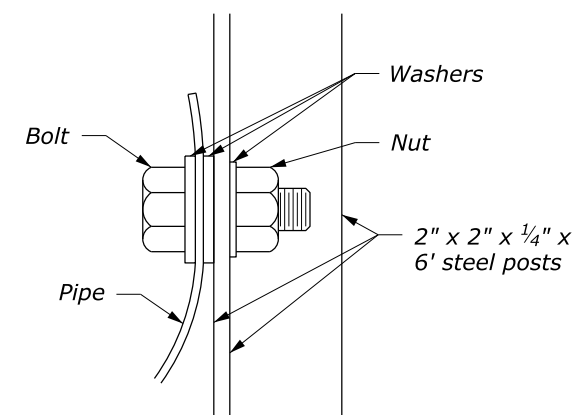


TYPE A

ANCHOR ASSEMBLY



TYPE B



BOLT DETAIL

NO SCALE

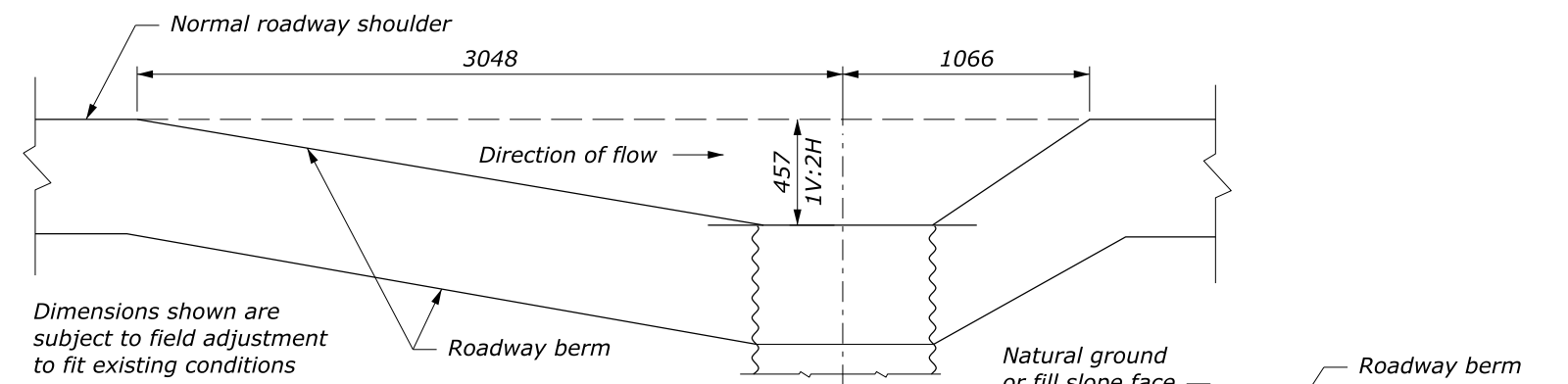
U.S. DEPARTMENT OF TRANSPORTATION, FHWA
OFFICE OF FEDERAL LANDS HIGHWAY

**SPILLWAY ASSEMBLY WITH
HALF-ROUND DOWN DRAIN**

WFLHD DETAIL
W606-12

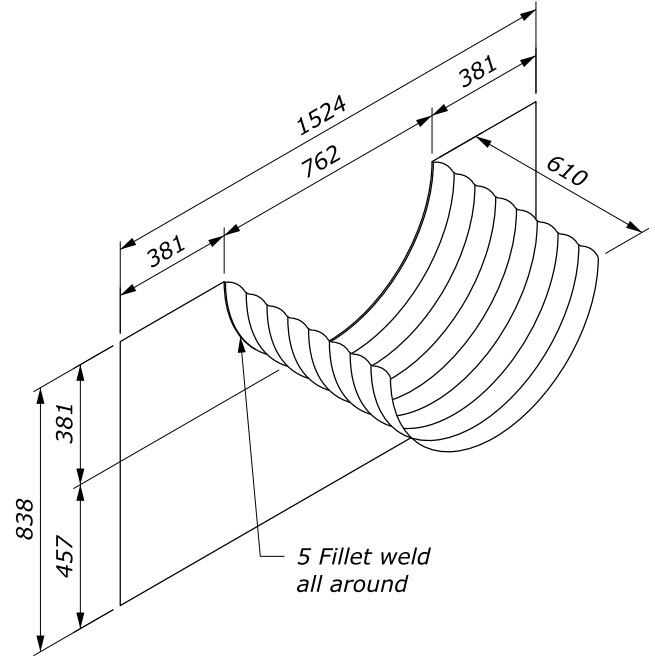
SPECIFICATION
FP-24, FP-14

APPROVED FOR USE
10/2009



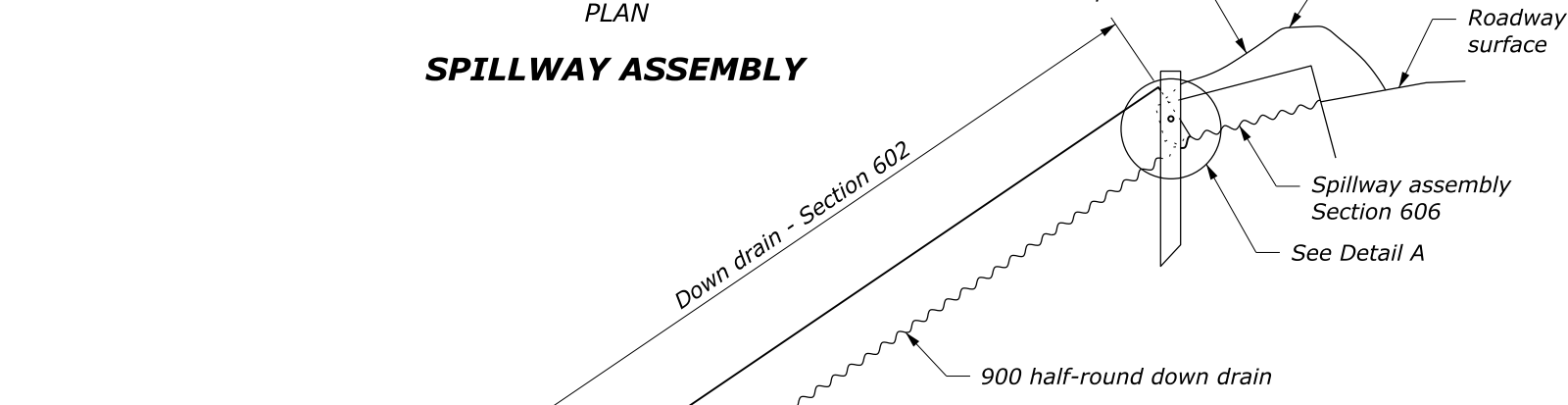
Dimensions shown are subject to field adjustment to fit existing conditions

PLAN
SPILLWAY ASSEMBLY

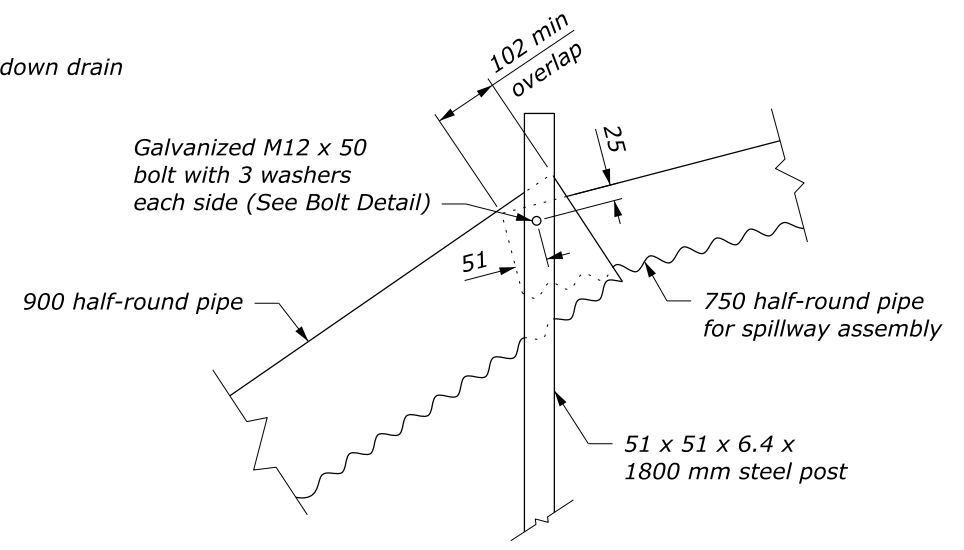
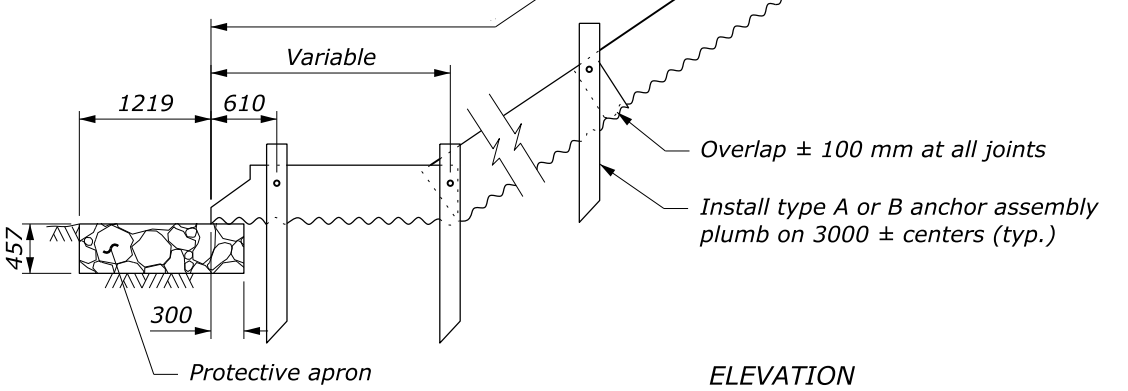


SPILLWAY ASSEMBLY

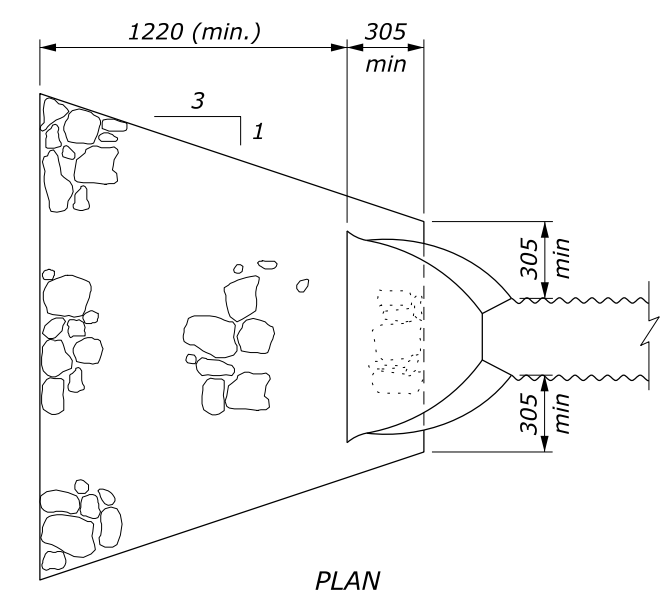
- NOTE:**
1. Fabricate spillway assembly from 1.6 mm thick galvanized steel or 1.5 mm aluminum.
 2. Place Class 2 riprap conforming to Section 251 for protective apron.
 3. Construct down drain from annular corrugated pipe, or from helically corrugated pipe with factory annular or flanged reformed ends.
 4. Approved alternate designs may be used.
 5. Furnish hardware in the metric sizes shown. Equivalent US Customary sizes may be used when metric sizes are unavailable.



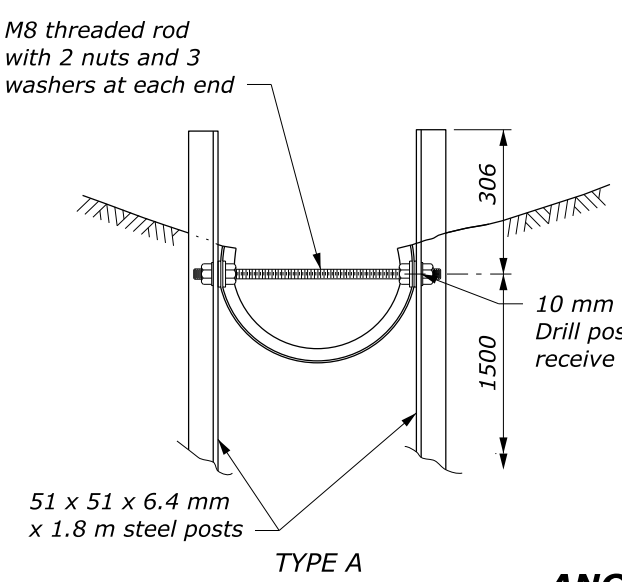
ELEVATION
SPILLWAY ASSEMBLY AND DOWN DRAIN



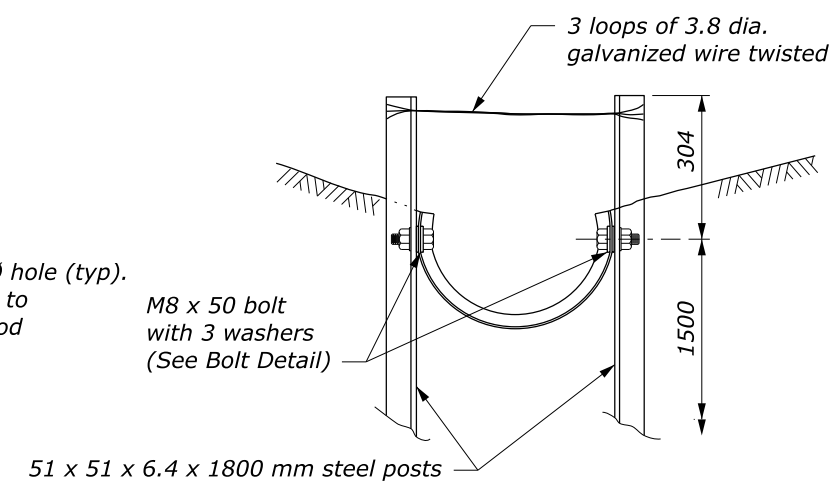
DETAIL A



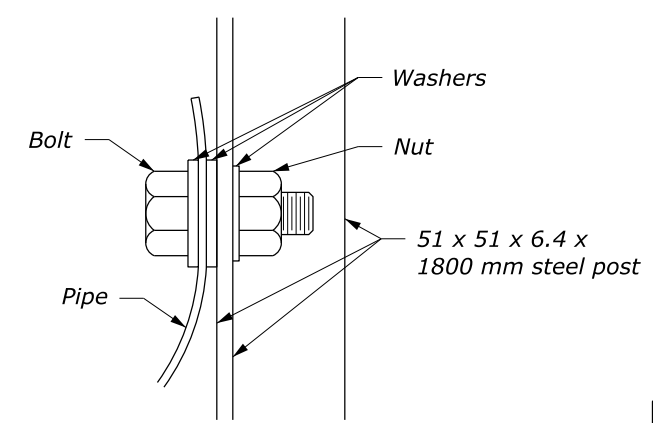
PLAN
PROTECTIVE APRON



TYPE A
ANCHOR ASSEMBLY



TYPE B
ANCHOR ASSEMBLY



BOLT DETAIL

This drawing contains **Metric** units of measure. Dimensions without units are millimeters.

U.S. DEPARTMENT OF TRANSPORTATION, FHWA OFFICE OF FEDERAL LANDS HIGHWAY	WFLHD DETAIL WM606-12
SPILLWAY ASSEMBLY WITH HALF-ROUND DOWN DRAIN	SPECIFICATION FP-24, FP-14
	APPROVED FOR USE 10/2009

NO SCALE

c:\pwwork\0413405\W606-12.dgn [Det. WM606-12] 23 October 2024 4:36 PM