

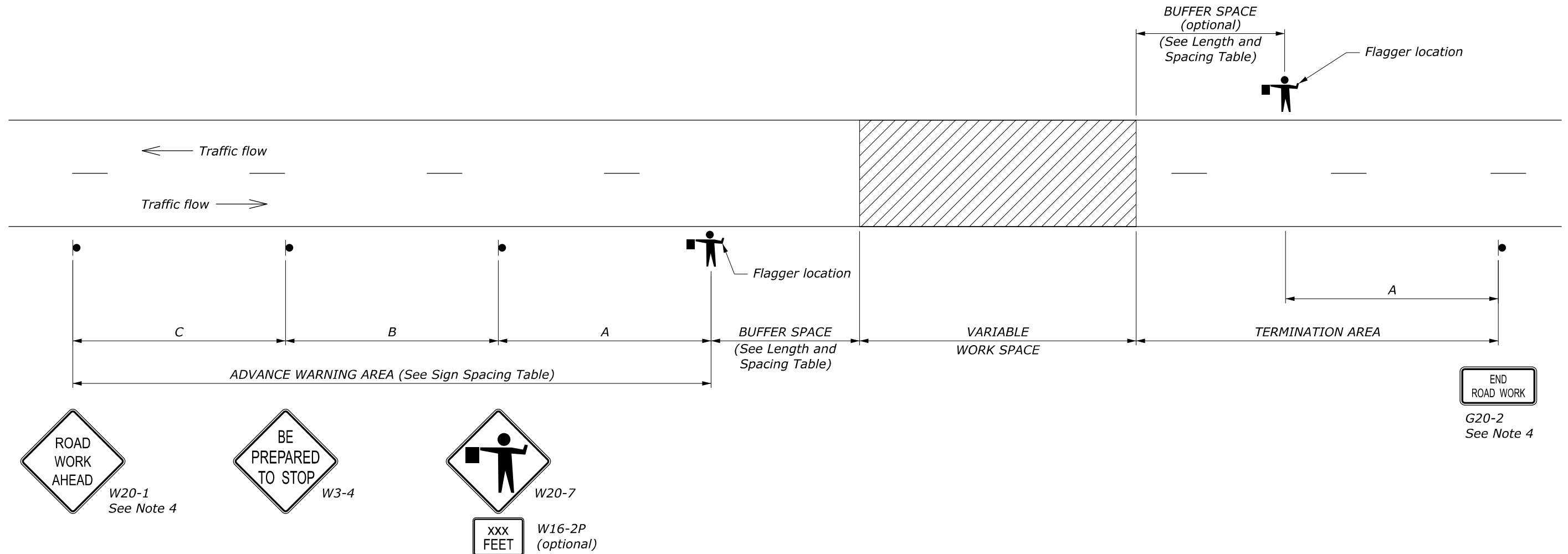
LENGTH AND SPACING TABLE	
APPROACH SPEED* MPH	BUFFER SPACE LENGTH FEET
20	115
25	155
30	200
35	250
40	305
45	360
50	425
55	495
60	570
65	645
70	730

\* Approach speed based on the regulatory posted speed, not the advisory speed.

SIGN SPACING TABLE			
ROAD TYPE	DISTANCE BETWEEN SIGNS IN FEET		
	A	B	C
Urban and Rural 30 mph and less	100	100	100
Urban and Rural 35 mph to 50 mph	350	350	350
Rural greater than 50 mph	500	500	500
Expressway / Freeway	1000	1500	2640

**NOTE:**

1. Signs are shown for one direction of travel only. Place signs similar to those depicted for the opposite direction of travel.
2. Final location and spacing of devices may be changed to fit field conditions as approved.
3. For pilot car operation, mount the PILOT CAR FOLLOW ME (G20-4) sign at a conspicuous location on the rear of vehicle. Prominently display the name of the Contractor on the pilot car.
4. If closure is completely within the project limits, eliminate the ROAD WORK AHEAD (W20-1) and END ROAD WORK (G20-2) signs.
5. Do not allow equipment, materials, or vehicles to be parked or stored in the buffer space.



U.S. DEPARTMENT OF TRANSPORTATION, FHWA OFFICE OF FEDERAL LANDS HIGHWAY	FLH STANDARD <b>635-5</b>
<b>TEMPORARY TRAFFIC CONTROL ROAD CLOSURE LAYOUT (WITH FLAGGERS)</b>	SPECIFICATION FP-24, FP-14
	APPROVED FOR USE 2/2024

NO SCALE

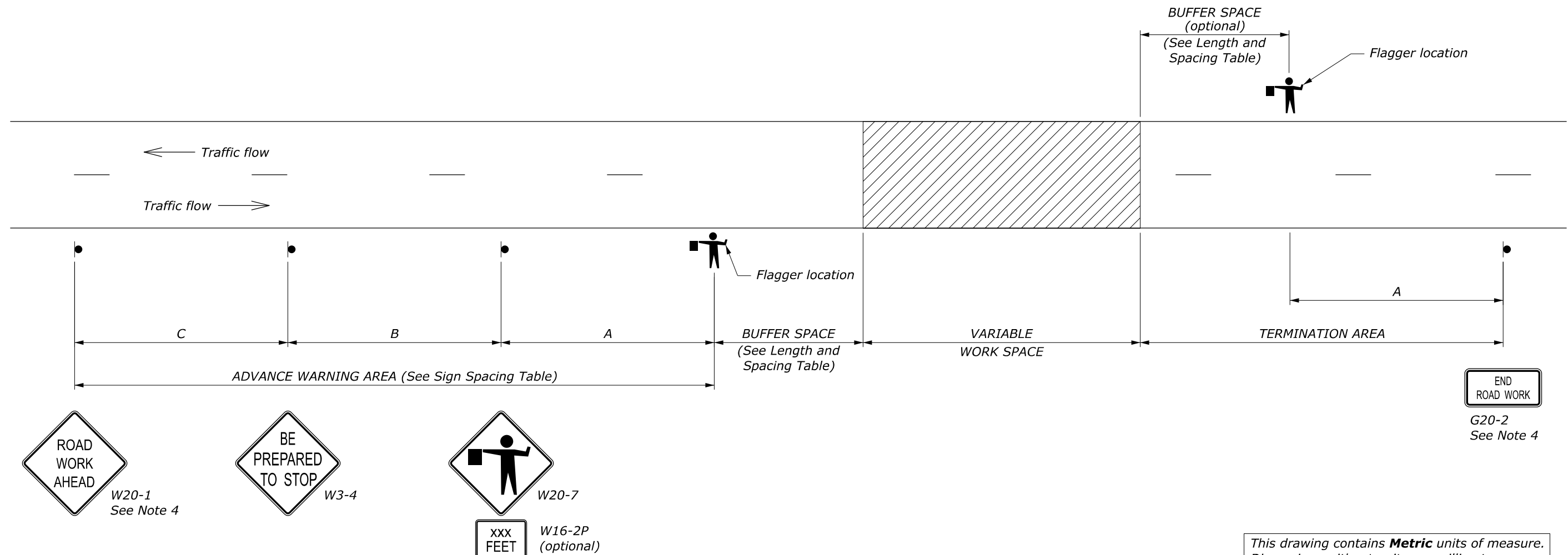
LENGTH AND SPACING TABLE		
APPROACH SPEED*		BUFFER SPACE LENGTH
mph	km/h	m
20	30	35
25	40	45
30	50	60
35	55	75
40	65	95
45	70	110
50	80	130
55	90	150
60	95	175
65	105	195
70	115	225

\* Approach speed based on the regulatory posted speed, not the advisory speed.

SIGN SPACING TABLE			
ROAD TYPE	DISTANCE BETWEEN SIGNS IN METERS		
	A	B	C
Urban and Rural $\leq 50$ km/h [ $\leq 30$ mph]	30	30	30
Urban and Rural 60-80 km/h [35-50 mph]	100	100	100
Rural greater than 80 km/h [50 mph]	150	150	150
Expressway / Freeway	300	450	800

**NOTE:**

1. Signs are shown for one direction of travel only. Place signs similar to those depicted for the opposite direction of travel.
2. Final location and spacing of devices may be changed to fit field conditions as approved.
3. For pilot car operation, mount the PILOT CAR FOLLOW ME (G20-4) sign at a conspicuous location on the rear of vehicle. Prominently display the name of the Contractor on the pilot car.
4. If closure is completely within the project limits, eliminate the ROAD WORK AHEAD (W20-1) and END ROAD WORK (G20-2) signs.
5. Do not allow equipment, materials, or vehicles to be parked or stored in the buffer space.



This drawing contains **Metric** units of measure. Dimensions without units are millimeters.

NO SCALE

U.S. DEPARTMENT OF TRANSPORTATION, FHWA OFFICE OF FEDERAL LANDS HIGHWAY	FLH STANDARD M635-5
<b>TEMPORARY TRAFFIC CONTROL ROAD CLOSURE LAYOUT (WITH FLAGGERS)</b>	SPECIFICATION FP-24, FP-14
	APPROVED FOR USE 2/2024

c:\pwwork\dms00753\Std635-5.dgn [Std M635-5] 3 June 2024 10:31 AM