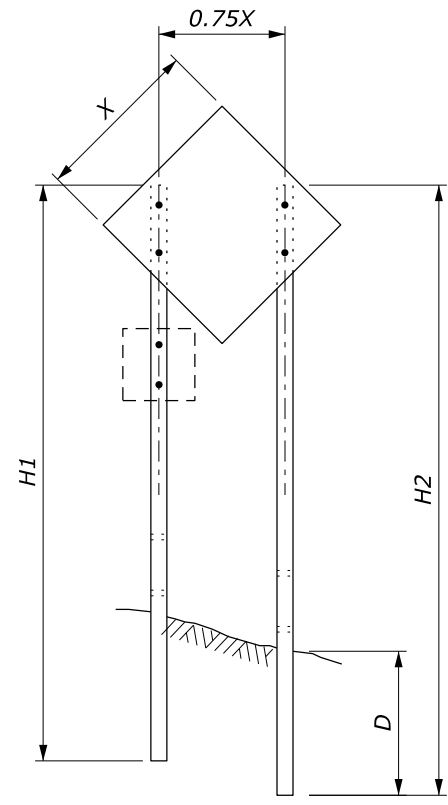
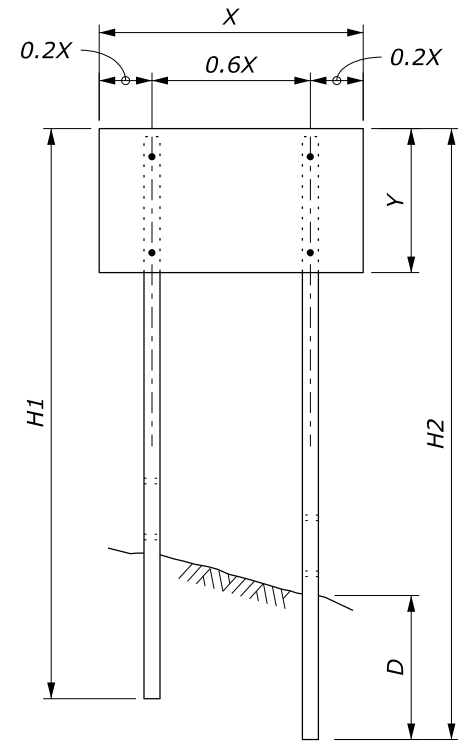


SINGLE POST SIGN



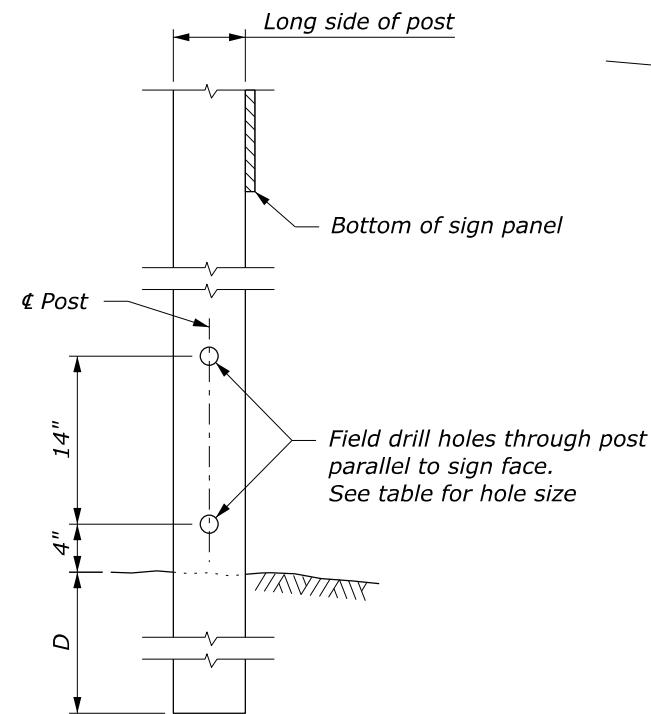
TWO POST SIGN



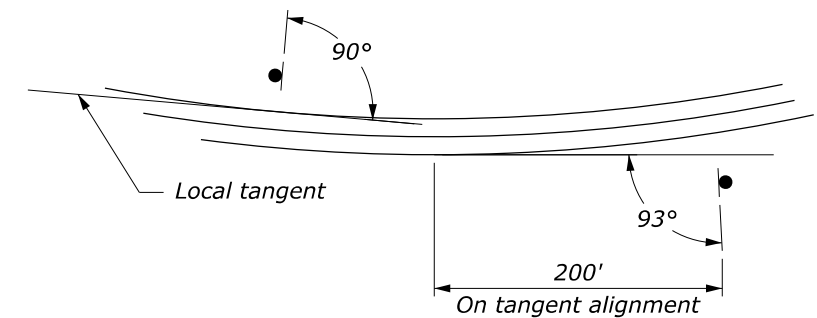
NOTE:

1. Attach sign panels with a minimum of two $\frac{1}{4}$ " diameter bolts per post.
2. $H1$ and $H2$ = Overall post length. Select post lengths to fit field conditions.
3. D = Post embedment depth for average soil conditions.
4. In areas where lateral distance is limited, a minimum lateral offset of 2 ft may be used. In areas with curbs, a minimum lateral distance of 1 ft behind the face of the curb may be used.
5. In pedestrian locations, or in areas with obstructed views, use 7 ft minimum mounting height for main sign and 6 ft minimum mounting height for secondary sign.
6. Use 7 ft minimum spacing between posts for sign posts 6" x 6" or larger.
7. State standards may be used as an alternative if approved.

WOOD POST SELECTION TABLE					
WIDTH "X"	AREA (SQFT)	NUMBER OF POSTS	POST SIZE (INCH)	D (INCH)	HOLE SIZE (INCH)
Diamond $\leq 36"$ Other Shapes $\leq 48"$	< 10	1	4 x 4	36	0
		1	4 x 6	48	1.5
Diamond $\leq 48"$	10 - 20	1	6 x 6	48	2
Diamond $\leq 48"$ Other Shapes $\leq 12'$	10 - 20	2	4 x 4	36	0
	20 - 50	2	4 x 6	48	1.5
> 13'	50 - 65	2	6 x 6	48	2
12' - 16'	50 - 65	3	4 x 6	48	1.5
> 17'	65 - 95	4	4 x 6	48	1.5
> 30'	65 - 95	3	6 x 6	48	2



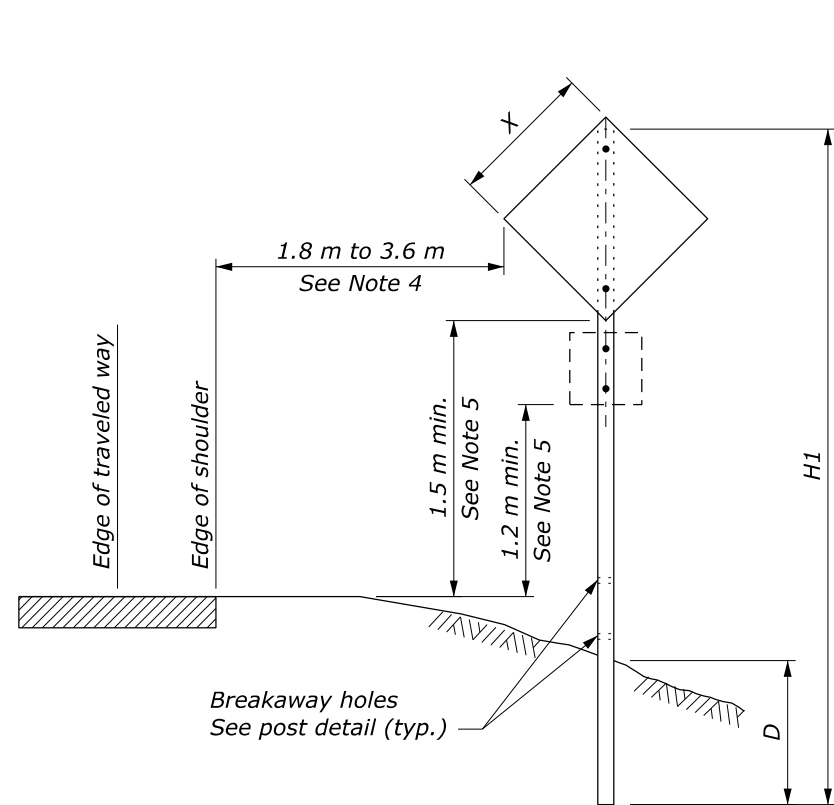
POST DETAIL



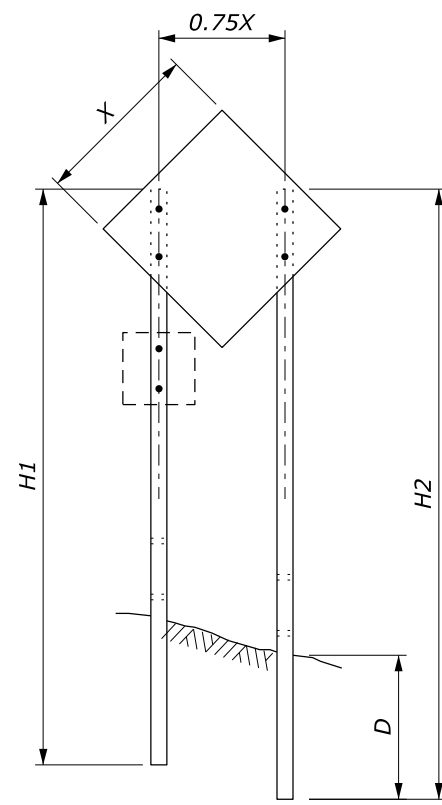
SIGN INSTALLATION ANGLE

NO SCALE

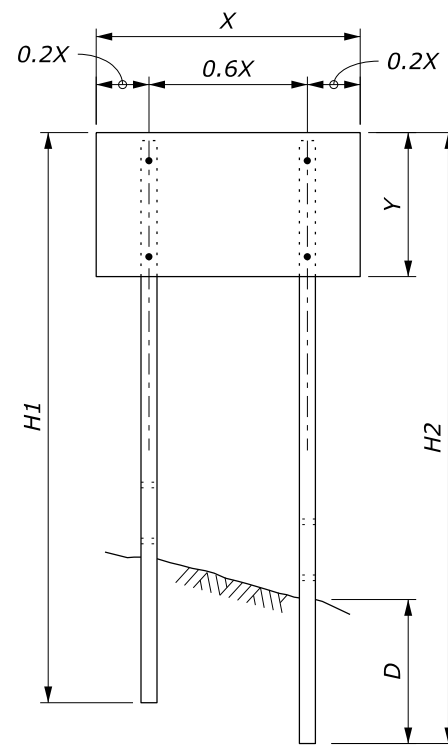
U.S. DEPARTMENT OF TRANSPORTATION, FHWA OFFICE OF FEDERAL LANDS HIGHWAY	FLH STANDARD 635-14
TEMPORARY TRAFFIC CONTROL SIGN INSTALLATION WOOD POSTS	SPECIFICATION FP-24, FP-14
	APPROVED FOR USE 2/2024



SINGLE POST SIGN



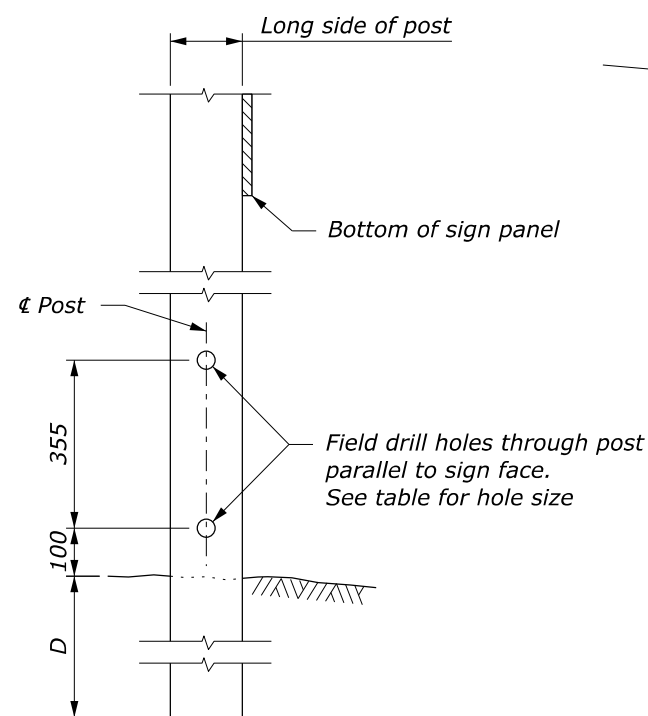
TWO POST SIGN



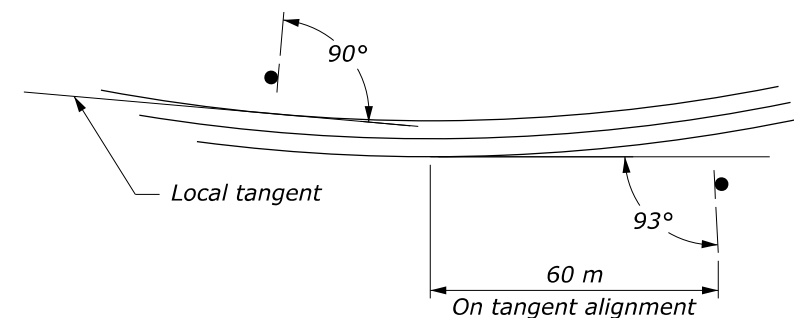
NOTE:

1. Attach sign panels with a minimum of two 6.25 mm diameter bolts per post.
2. H1 and H2 = Overall post length. Select post lengths to fit field conditions.
3. D = Post embedment depth for average soil conditions.
4. In areas where lateral distance is limited, a minimum lateral offset of 600 mm may be used. In areas with curbs, a minimum lateral distance of 300 mm behind the face of the curb may be used.
5. In pedestrian locations, or in areas with obstructed views, use 2.1 m minimum mounting height for main sign and 1.8 m minimum mounting height for secondary sign.
6. Use 2.1 m minimum spacing between posts for sign posts 150 mm x 150 mm or larger.
7. State standards may be used as an alternative if approved.

WOOD POST SELECTION TABLE					
WIDTH "X"	AREA (m ²)	NUMBER OF POSTS	POST SIZE (mm)	D (mm)	HOLE SIZE (mm)
Diamond ≤ 915 mm Other Shapes ≤ 1220 mm	< 0.9	1	100 x 100	900	0
		1	100 x 150	1200	40
Diamond ≤ 1220 mm	0.9 - 1.9	1	150 x 150	1200	50
Diamond ≤ 1220 mm Other Shapes ≤ 3.7 m	0.9 - 1.9	2	100 x 100	900	0
		2	100 x 150	1200	40
> 4 m	4.6 - 6.0	2	150 x 150	1200	50
3.7 m - 4.9 m	4.6 - 6.0	3	100 x 150	1200	40
> 5 m	6.0 - 8.9	4	100 x 150	1200	40
> 9 m	6.0 - 8.9	3	150 x 150	1200	50



POST DETAIL



SIGN INSTALLATION ANGLE

This drawing contains **Metric** units of measure. Dimensions without units are millimeters.

NO SCALE

U.S. DEPARTMENT OF TRANSPORTATION, FHWA OFFICE OF FEDERAL LANDS HIGHWAY	FLH STANDARD M635-14
TEMPORARY TRAFFIC CONTROL SIGN INSTALLATION WOOD POSTS	SPECIFICATION FP-24, FP-14
	APPROVED FOR USE 2/2024