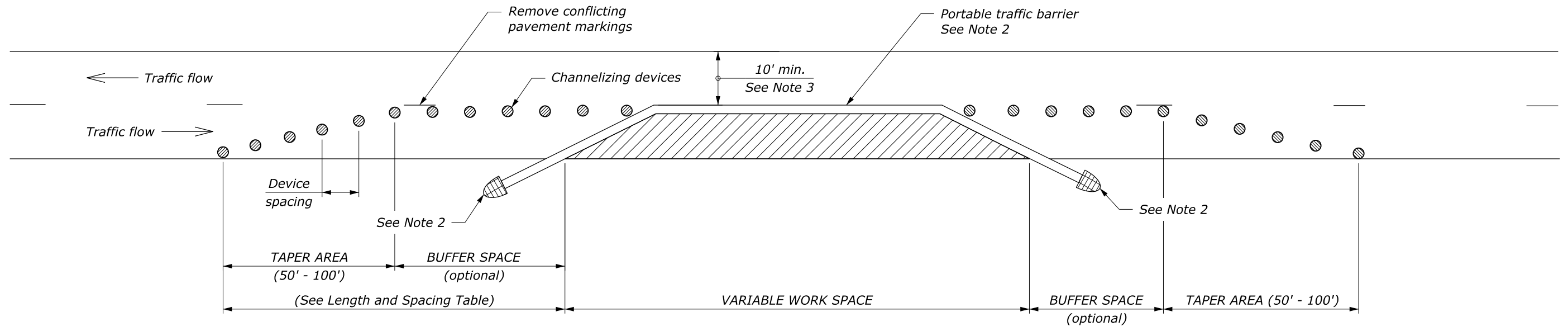


| LENGTH AND SPACING TABLE |                          |                                     |              |            |                             |                                 |
|--------------------------|--------------------------|-------------------------------------|--------------|------------|-----------------------------|---------------------------------|
| APPROACH SPEED* MPH      | BUFFER SPACE LENGTH FEET | CHANNELIZING DEVICE SPACING IN FEET |              |            | CONCRETE BARRIER FLARE RATE | WORK ZONE CLEAR ZONE WIDTH FEET |
|                          |                          | TAPER AREA                          | BUFFER SPACE | WORK SPACE |                             |                                 |
| 20                       | 115                      | 20                                  | 40           | 40         | 1:8                         | 10                              |
| 25                       | 155                      | 20                                  | 50           | 50         | 1:8                         | 10                              |
| 30                       | 200                      | 20                                  | 60           | 60         | 1:8                         | 10                              |
| 35                       | 250                      | 20                                  | 70           | 70         | 1:9                         | 10                              |
| 40                       | 305                      | 20                                  | 80           | 80         | 1:10                        | 15                              |
| 45                       | 360                      | 20                                  | 90           | 90         | 1:12                        | 20                              |
| 50                       | 425                      | 20                                  | 100          | 100        | 1:14                        | 20                              |
| 55                       | 495                      | 20                                  | 110          | 110        | 1:16                        | 20                              |
| 60                       | 570                      | 20                                  | 120          | 120        | 1:16                        | 30                              |
| 65                       | 645                      | 20                                  | 130          | 130        | 1:16                        | 30                              |
| 70                       | 730                      | 20                                  | 140          | 140        | 1:16                        | 30                              |

\* Approach speed based on the regulatory posted speed, not the advisory speed.

**NOTE:**

1. Install signs and other devices for single lane closure according to Standard 635-6, 7, 8, or 9. Final location and spacing of devices may be changed to fit field conditions as approved.
2. Place barrier according to the AASHTO Roadside Design Guide. Terminate barrier ends outside the work zone clear zone or protect the barrier ends with a crash cushion. Include reflectors on barrier at 25 ft intervals.
3. For project specific minimum width, refer to Special Contract Requirements, Section 156.
4. Do not allow equipment, materials, or vehicles to be parked or stored in the buffer space.



c:\pw-work\dm60753\Std635-13.dgn [Std 635-13] 3 June 2024 3:13 PM

NO SCALE

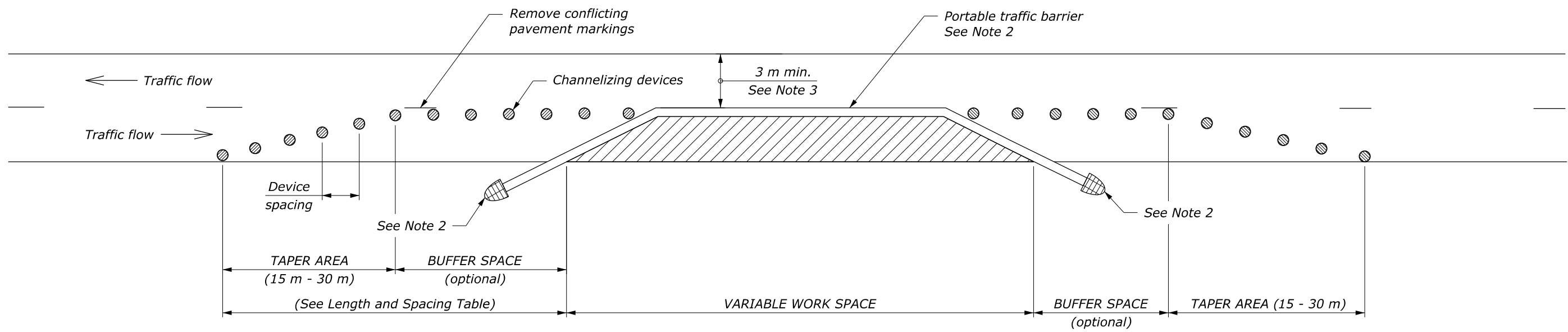
|  |                               |
|--|-------------------------------|
| U.S. DEPARTMENT OF TRANSPORTATION, FHWA<br>OFFICE OF FEDERAL LANDS HIGHWAY                 | FLH STANDARD<br>635-13        |
| <b>TEMPORARY TRAFFIC CONTROL<br/>SINGLE LANE CLOSURE LAYOUT<br/>WITH TEMPORARY BARRIER</b> | SPECIFICATION<br>FP-24, FP-14 |
|  | APPROVED FOR USE<br>2/2024    |

| LENGTH AND SPACING TABLE |     |                          |                                       |              |            |                             |                                 |
|--------------------------|-----|--------------------------|---------------------------------------|--------------|------------|-----------------------------|---------------------------------|
| APPROACH SPEED*          |     | BUFFER SPACE LENGTH<br>m | CHANNELIZING DEVICE SPACING IN METERS |              |            | CONCRETE BARRIER FLARE RATE | WORK ZONE CLEAR ZONE WIDTH<br>m |
|                          |     |                          | TAPER AREA                            | BUFFER SPACE | WORK SPACE |                             |                                 |
| 20                       | 30  | 35                       | 6                                     | 12           | 12         | 1:8                         | 3.0                             |
| 25                       | 40  | 45                       | 6                                     | 15           | 15         | 1:8                         | 3.0                             |
| 30                       | 50  | 60                       | 6                                     | 18           | 18         | 1:8                         | 3.0                             |
| 35                       | 55  | 75                       | 6                                     | 21           | 21         | 1:9                         | 3.0                             |
| 40                       | 65  | 95                       | 6                                     | 24           | 24         | 1:10                        | 4.6                             |
| 45                       | 70  | 110                      | 6                                     | 27           | 27         | 1:12                        | 6.1                             |
| 50                       | 80  | 130                      | 6                                     | 30           | 30         | 1:14                        | 6.1                             |
| 55                       | 90  | 150                      | 6                                     | 34           | 34         | 1:16                        | 6.1                             |
| 60                       | 95  | 175                      | 6                                     | 37           | 37         | 1:16                        | 9.0                             |
| 65                       | 105 | 195                      | 6                                     | 40           | 40         | 1:16                        | 9.0                             |
| 70                       | 115 | 225                      | 6                                     | 43           | 43         | 1:16                        | 9.0                             |

\* Approach speed based on the regulatory posted speed, not the advisory speed.

**NOTE:**

1. Install signs and other devices for single lane closure according to Standard M635-6, 7, 8, or 9. Final location and spacing of devices may be changed to fit field conditions as approved.
2. Place barrier according to the AASHTO Roadside Design Guide. Terminate barrier ends outside the work zone clear zone or protect the barrier ends with a crash cushion. Include reflectors on barrier at 7.6 m intervals.
3. For project specific minimum width, refer to Special Contract Requirements, Section 156.
4. Do not allow equipment, materials, or vehicles to be parked or stored in the buffer space.



This drawing contains **Metric** units of measure.  
Dimensions without units are millimeters.

|  |                               |
|--|-------------------------------|
| U.S. DEPARTMENT OF TRANSPORTATION, FHWA<br>OFFICE OF FEDERAL LANDS HIGHWAY                 | FLH STANDARD<br>M635-13       |
| <b>TEMPORARY TRAFFIC CONTROL<br/>SINGLE LANE CLOSURE LAYOUT<br/>WITH TEMPORARY BARRIER</b> | SPECIFICATION<br>FP-24, FP-14 |
|  | APPROVED FOR USE<br>2/2024    |

NO SCALE