

LENGTH AND SPACING TABLE

APPROACH SPEED* MPH	MINIMUM TAPER LENGTH FEET	BUFFER SPACE LENGTH FEET	CHANNELIZING DEVICE SPACING IN FEET		
			TAPER AREA	BUFFER SPACE	WORK SPACE
20	Shifting taper formula: $L = \frac{WS^2}{120}$ for $S \leq 40$ mph	115	20	40	40
25		155	25	50	50
30	$L = \frac{WS}{2}$ for $S \geq 45$ mph	200	30	60	60
35		250	35	70	70
40	Where: $L$ = Minimum length of taper $W$ = Width of offset in feet $S$ = Numerical value of posted speed limit or 85 percentile speed prior to work in miles per hour	305	40	80	80
45		360	45	90	90
50	425	50	100	100	
55	495	55	110	110	
60	570	60	120	120	
65	645	65	130	130	
70	730	70	140	140	

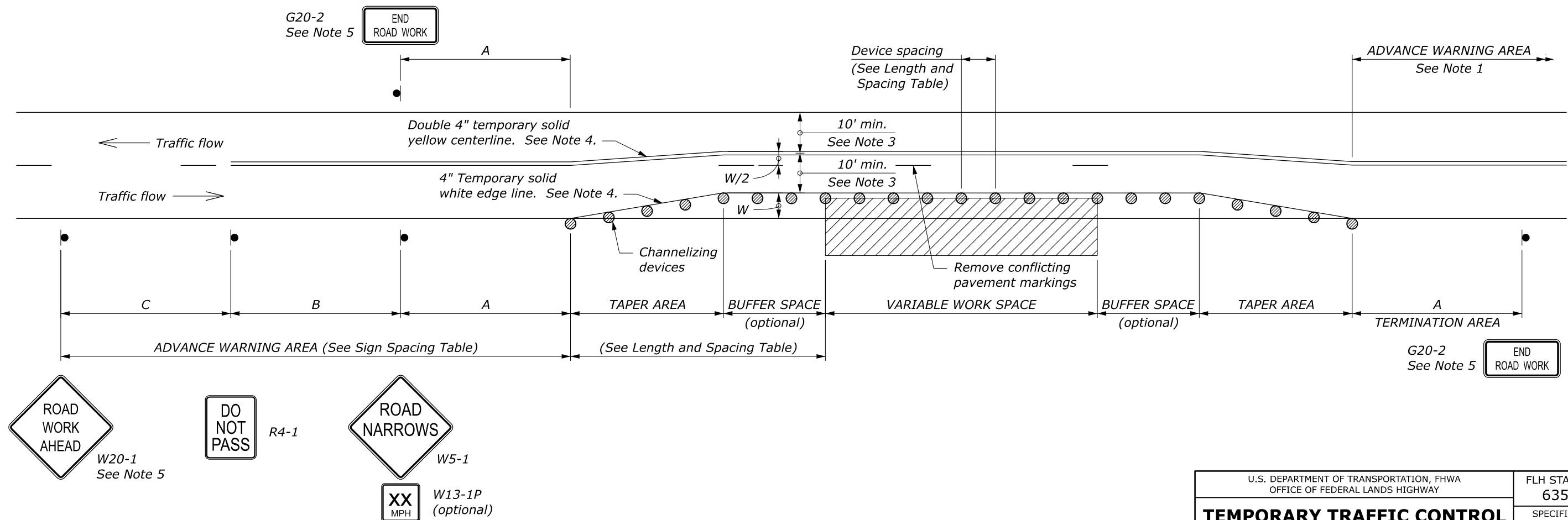
\* Approach speed based on the regulatory posted speed, not the advisory speed.

SIGN SPACING TABLE

ROAD TYPE	DISTANCE BETWEEN SIGNS IN FEET		
	A	B	C
Urban and Rural 30 mph and less	100	100	100
Urban and Rural 35 mph to 50 mph	350	350	350
Rural greater than 50 mph	500	500	500
Expressway / Freeway	1000	1500	2640

NOTE:

1. Signs are shown for one direction of travel only. Place signs similar to those depicted for the opposite direction of travel.
2. Final location and spacing of devices may be changed to fit field conditions as approved.
3. For project specific minimum width, refer to Special Contract Requirements, Section 156.
4. If the roadway surface is paved, install temporary pavement markings. If nearest no-passing zone is within 400 feet, extend markings to connect zones.
5. If closure is completely within the project limits, eliminate the ROAD WORK AHEAD (W20-1) and END ROAD WORK (G20-2) signs.
6. Install PASS WITH CARE sign (R4-2) at ends of no-passing zone if directed.
7. Do not allow equipment, materials, or vehicles to be parked or stored in the buffer space.



NO SCALE

U.S. DEPARTMENT OF TRANSPORTATION, FHWA OFFICE OF FEDERAL LANDS HIGHWAY	FLH STANDARD 635-11
<b>TEMPORARY TRAFFIC CONTROL PART LANE WIDTH AND SHOULDER CLOSURE LAYOUT</b>	SPECIFICATION FP-24, FP-14
	APPROVED FOR USE 2/2024

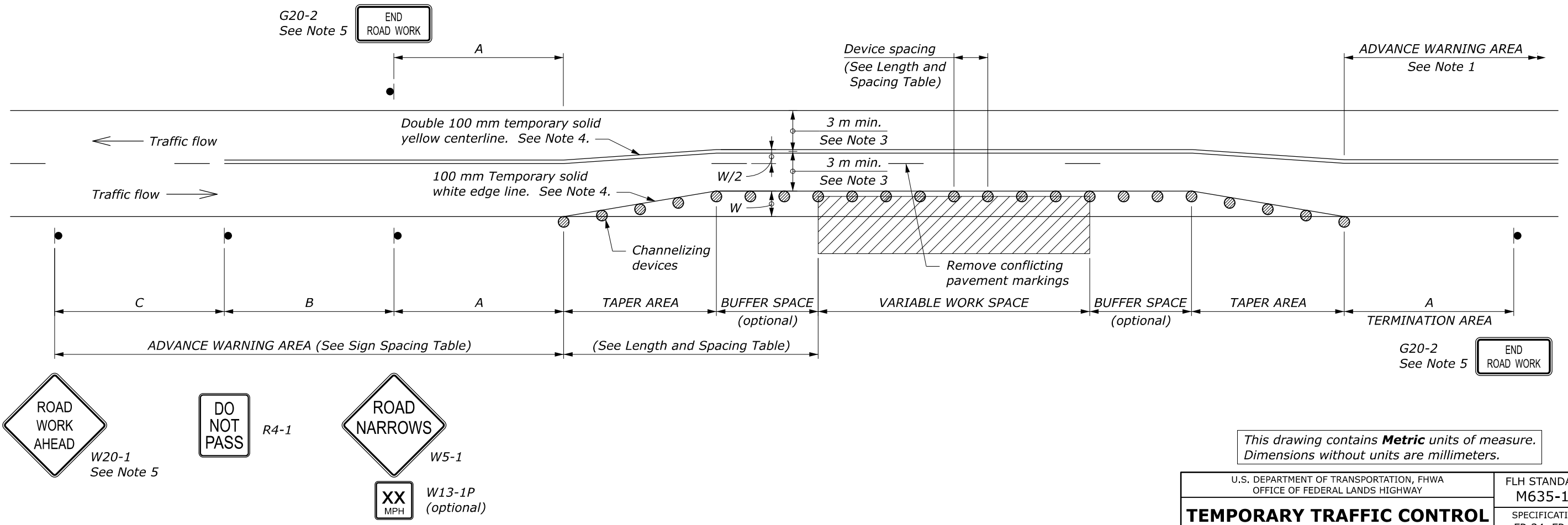
LENGTH AND SPACING TABLE						
APPROACH SPEED*		MINIMUM TAPER LENGTH m	BUFFER SPACE LENGTH m	CHANNELIZING DEVICE SPACING IN METERS		
mph	km/h			TAPER AREA	BUFFER SPACE	WORK SPACE
20	30	Shifting taper formula: $L = \frac{WS^2}{310}$ for $S \leq 70$ km/h	35	6	12	
25	40		45	8	15	
30	50		60	9	18	
35	55	$L = \frac{WS}{3.2}$ for $S \geq 70$ km/h	75	11	21	
40	65		95	12	24	
45	70		110	14	27	
50	80		130	15	30	
55	90	Where: L = Minimum length of taper W = Width of offset in meters S = Metric equivalent of posted speed limit or 85 percentile speed prior to work in kilometers per hour	150	17	34	
60	95		175	18	37	
65	105		195	20	40	
70	115		225	21	43	

\* Approach speed based on the regulatory posted speed, not the advisory speed.

SIGN SPACING TABLE			
ROAD TYPE	DISTANCE BETWEEN SIGNS IN METERS		
	A	B	C
Urban and Rural $\leq 50$ km/h [ $\leq 30$ mph]	30	30	30
Urban and Rural 60-80 km/h [35-50 mph]	100	100	100
Rural greater than 80 km/h [50 mph]	150	150	150
Expressway / Freeway	300	450	800

**NOTE:**

1. Signs are shown for one direction of travel only. Place signs similar to those depicted for the opposite direction of travel.
2. Final location and spacing of devices may be changed to fit field conditions as approved.
3. For project specific minimum width, refer to Special Contract Requirements, Section 156.
4. If the roadway surface is paved, install temporary pavement markings. If nearest no-passing zone is within 120 m, extend markings to connect zones.
5. If closure is completely within the project limits, eliminate the ROAD WORK AHEAD (W20-1) and END ROAD WORK (G20-2) signs.
6. Install PASS WITH CARE sign (R4-2) at ends of no-passing zone if directed.
7. Do not allow equipment, materials, or vehicles to be parked or stored in the buffer space.



This drawing contains **Metric** units of measure. Dimensions without units are millimeters.

U.S. DEPARTMENT OF TRANSPORTATION, FHWA OFFICE OF FEDERAL LANDS HIGHWAY	FLH STANDARD M635-11
<b>TEMPORARY TRAFFIC CONTROL PART LANE WIDTH AND SHOULDER CLOSURE LAYOUT</b>	SPECIFICATION FP-24, FP-14
	APPROVED FOR USE 2/2024

NO SCALE