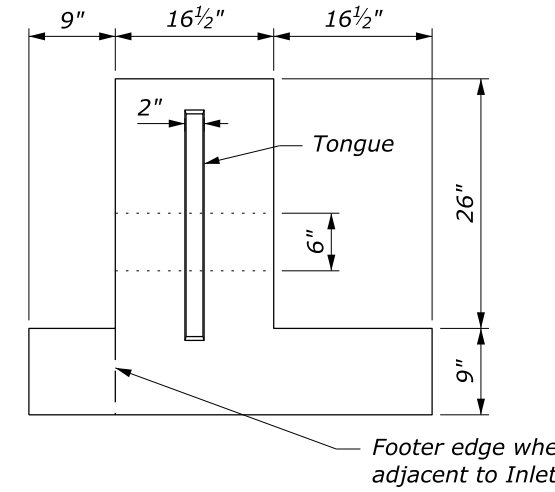
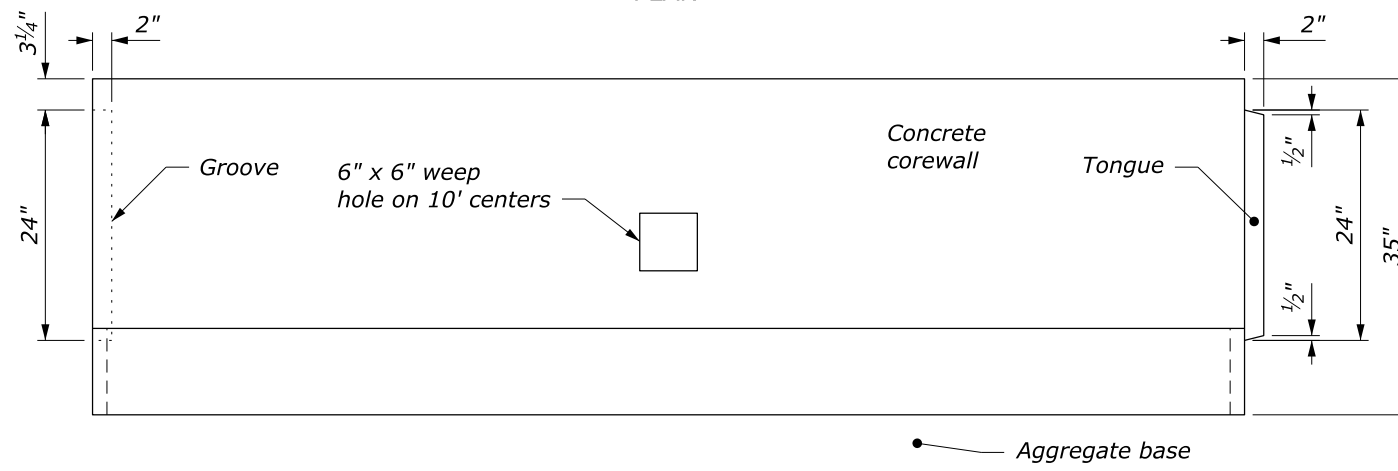
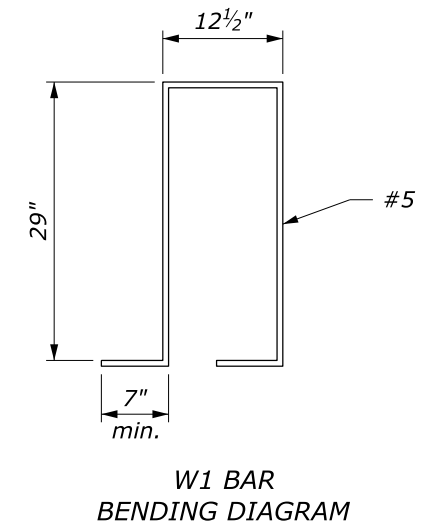
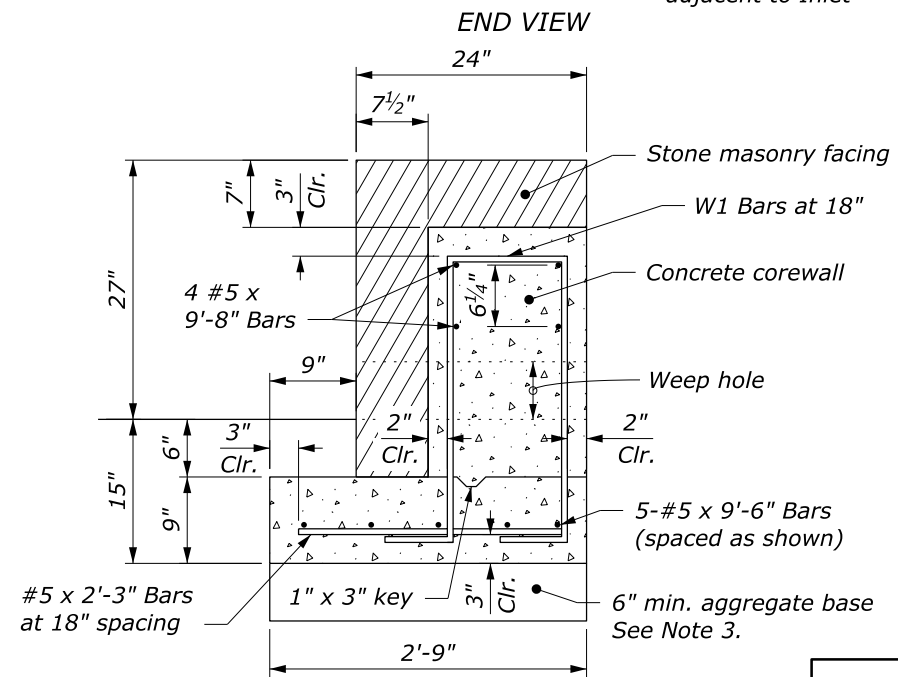
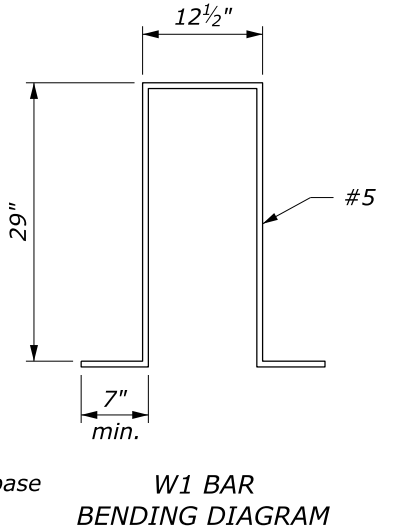
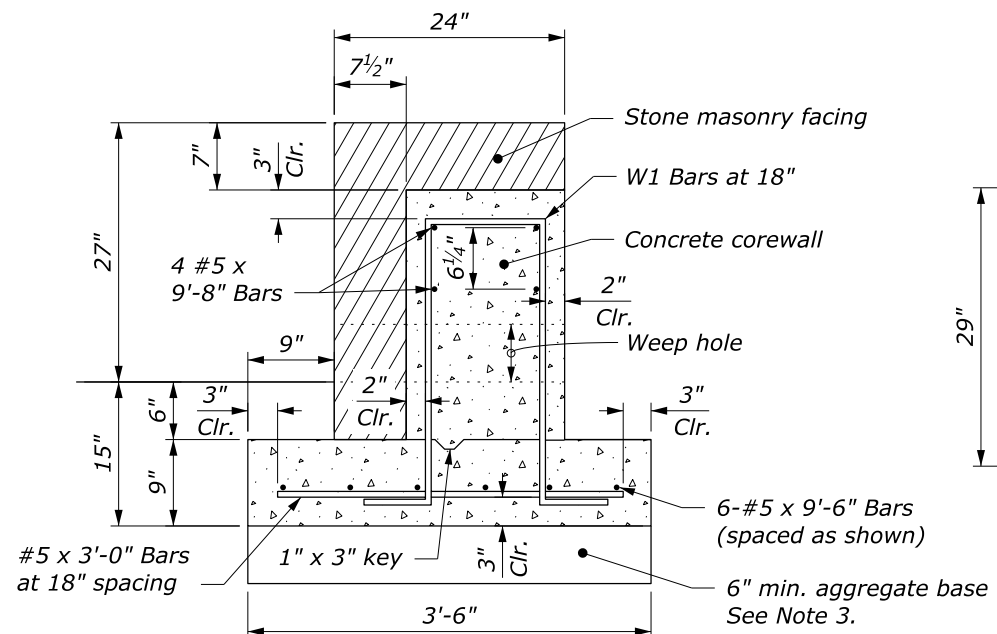


NOTE:

1. Form construction joints in the corewall at 30-foot intervals or, at the option of the Contractor, construct the corewall of precast concrete units.
2. Use cast-in-place corewall on curves with radius less than 150 feet.
3. Depth of aggregate base may be less than 6 inches when the foundation is on either rock fill or solid rock.
4. See Typical Sections for guardwall offset distance and pavement structure.
5. Set galvanized metal slots with anchors for the stone work or other approved type of metal anchors in the concrete. Equivalent attachment systems are allowed with approval.



PRECAST CONCRETE COREWALL

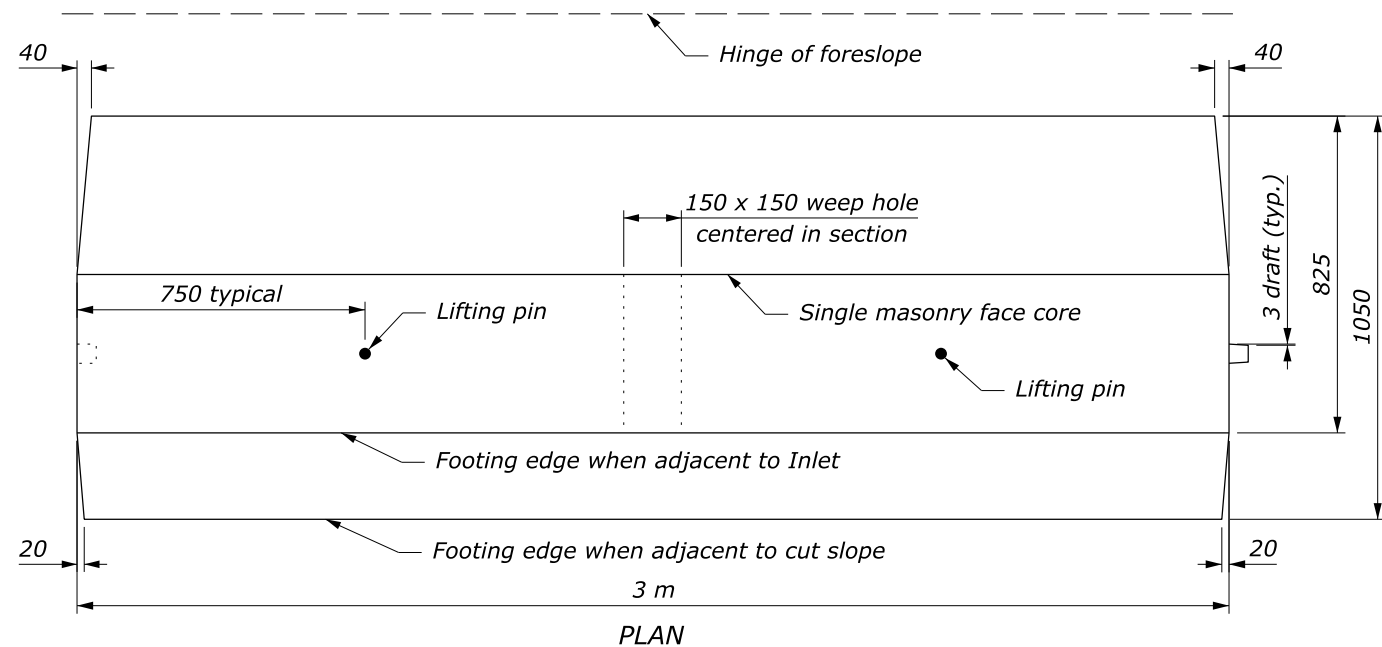


TYPICAL GUARDWALL CROSS-SECTION (ADJACENT TO INLET)

NO SCALE

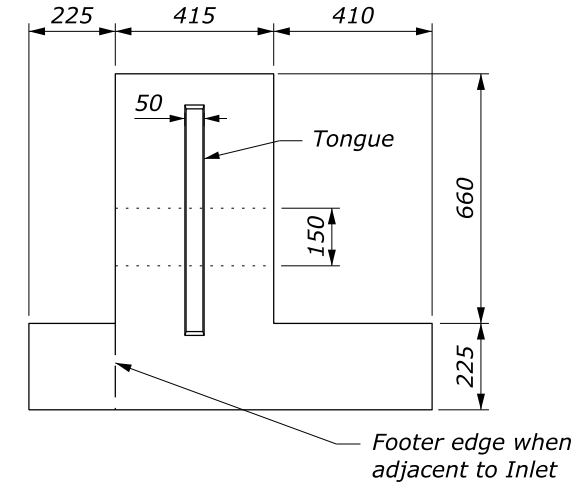
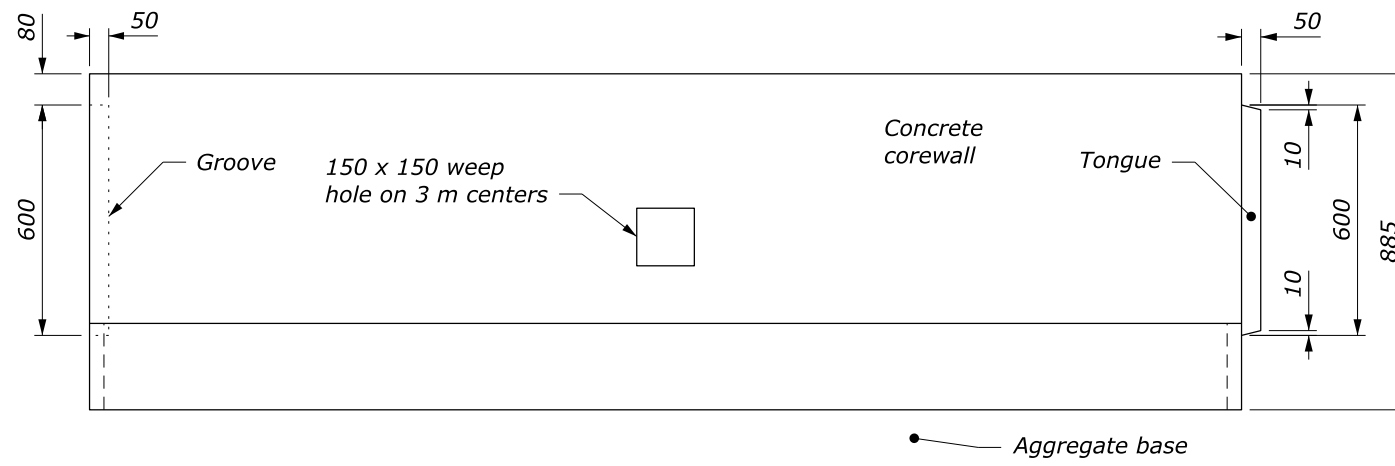
U.S. DEPARTMENT OF TRANSPORTATION, FHWA OFFICE OF FEDERAL LANDS HIGHWAY	FLH STANDARD 620-1
STONE MASONRY GUARDWALL (SINGLE FACE)	SPECIFICATION FP-24, FP-14
	APPROVED FOR USE 2/2024

c:\pwwork\0297997\Std620-1.dgn [Std 620-1] 13 June 2024 8:45 AM

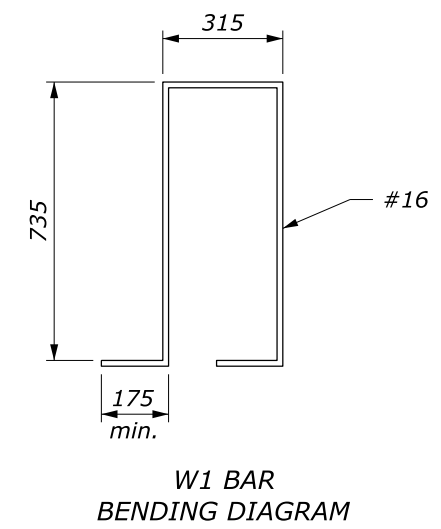
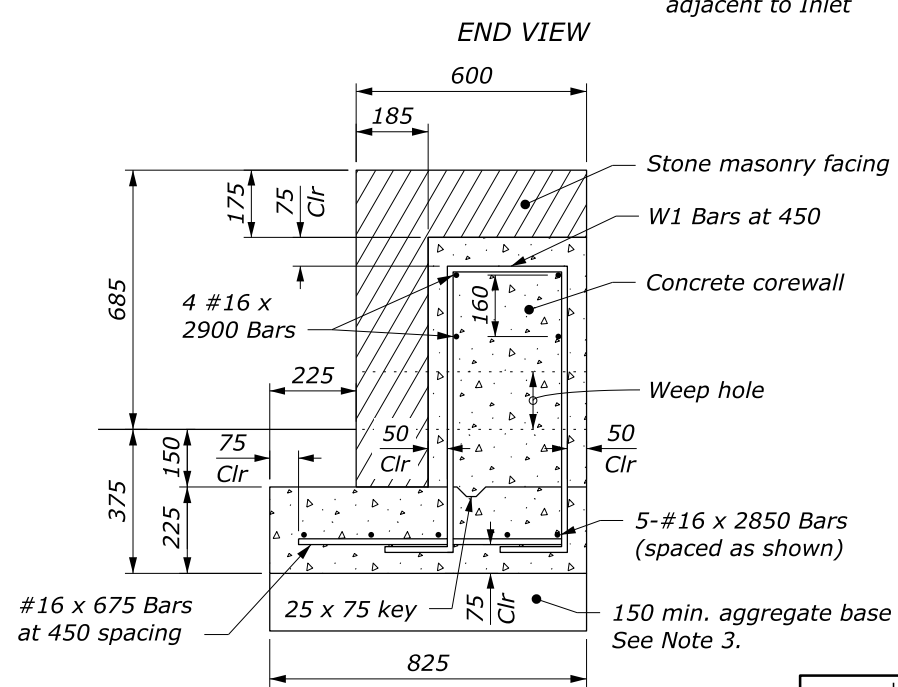
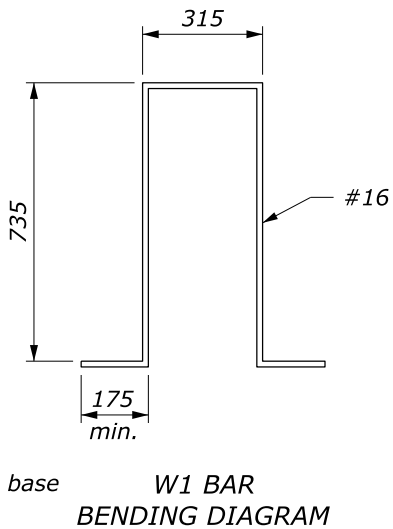
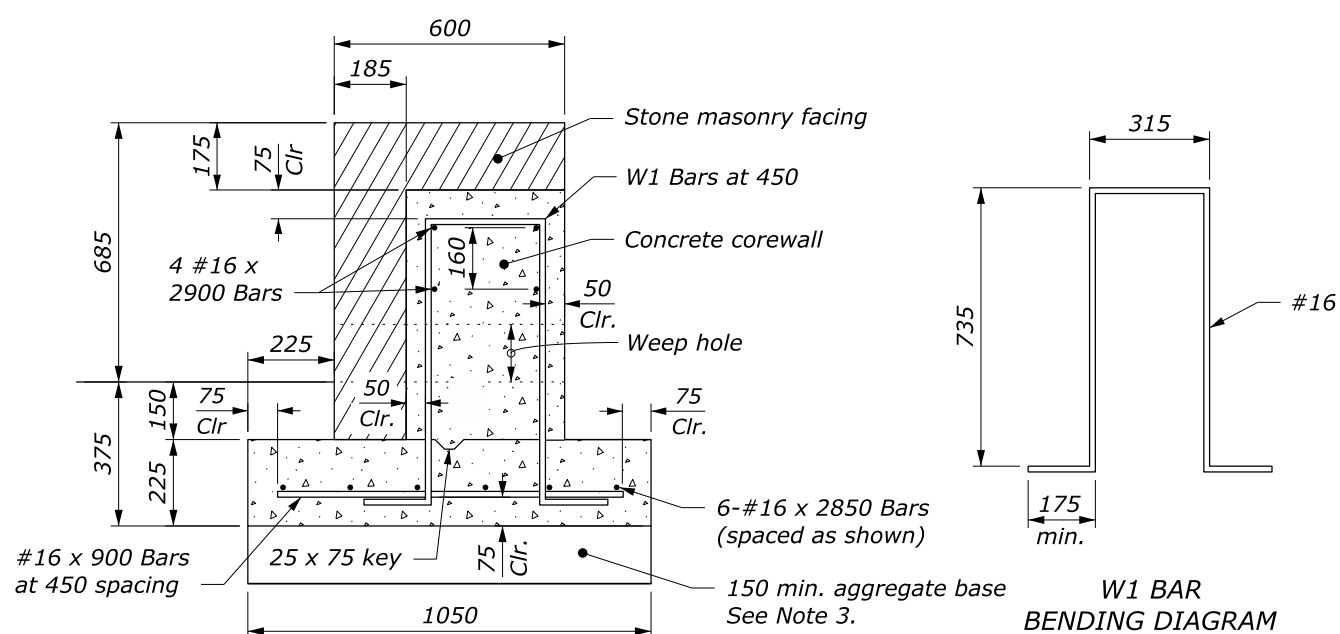


NOTE:

1. Form construction joints in the corewall at 9 m intervals or, at the option of the Contractor, construct the corewall of precast concrete units.
2. Use cast-in-place corewall on curves with radius less than 50 m.
3. Depth of aggregate base may be less than 150 mm when the foundation is on either rock fill or solid rock.
4. See Typical Sections for guardwall offset distance and pavement structure.
5. Set galvanized metal slots with anchors for the stone work or other approved type of metal anchors in the concrete. Equivalent attachment systems are allowed with approval.



PRECAST CONCRETE COREWALL



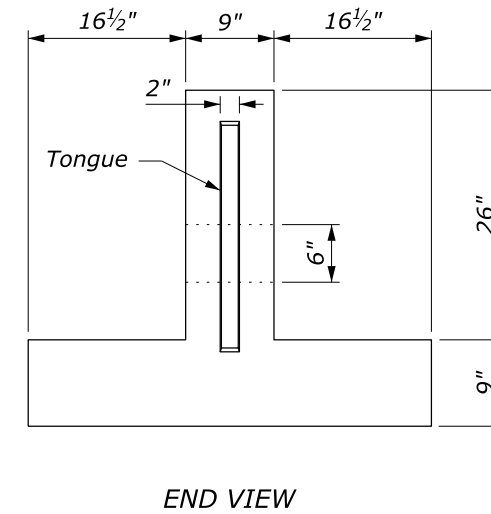
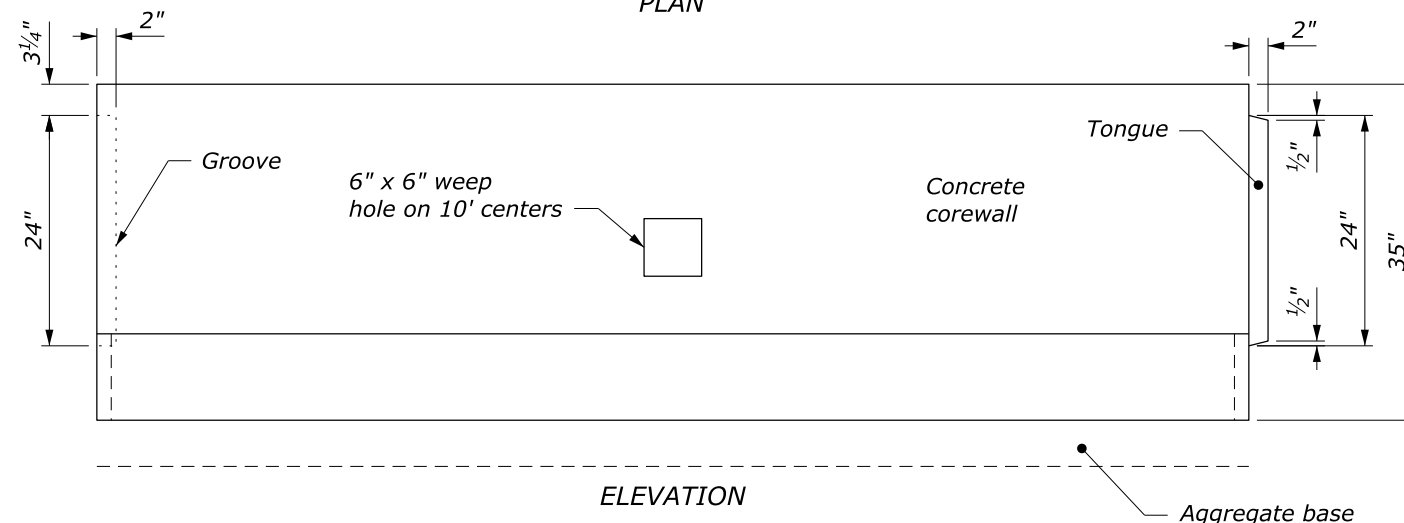
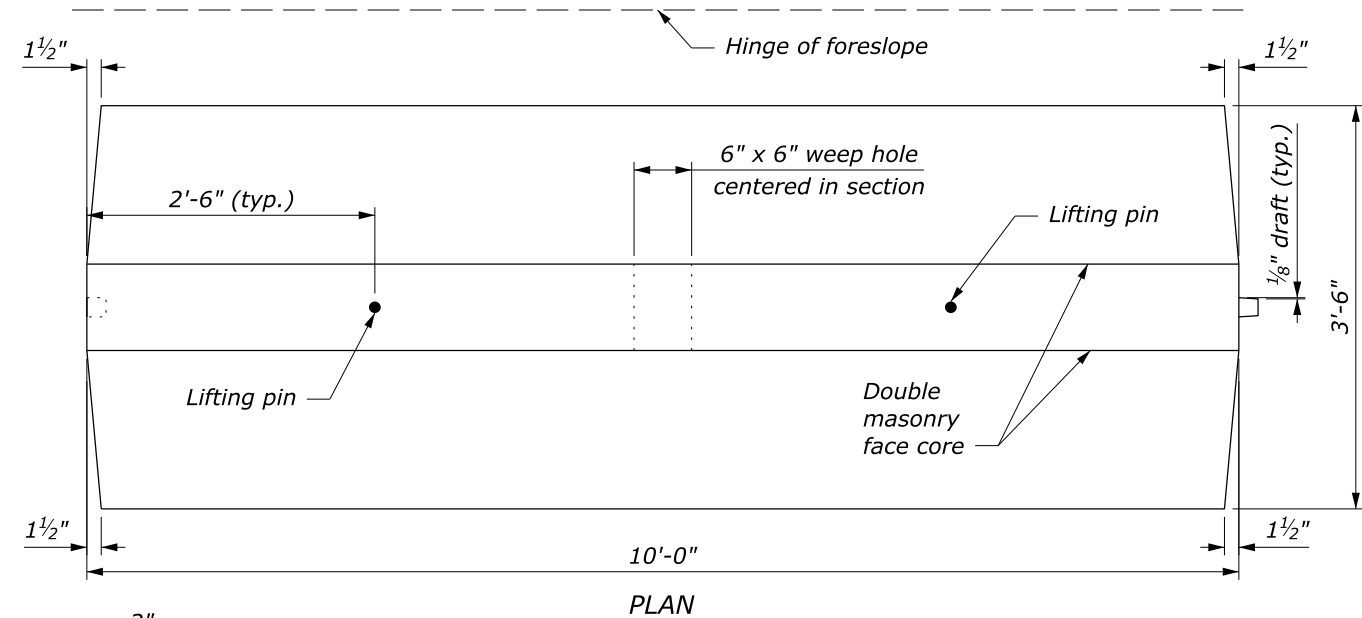
This drawing contains **Metric** units of measure. Dimensions without units are millimeters.

U.S. DEPARTMENT OF TRANSPORTATION, FHWA OFFICE OF FEDERAL LANDS HIGHWAY	FLH STANDARD M620-1
	SPECIFICATION FP-24, FP-14
	APPROVED FOR USE 2/2024

STONE MASONRY GUARDWALL (SINGLE FACE)

NO SCALE

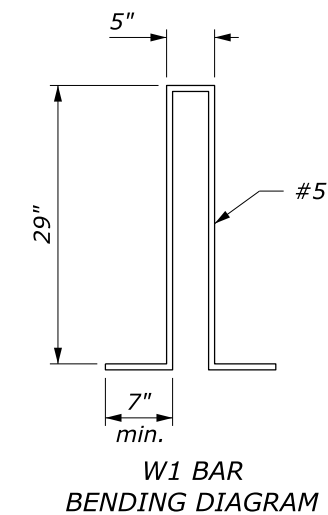
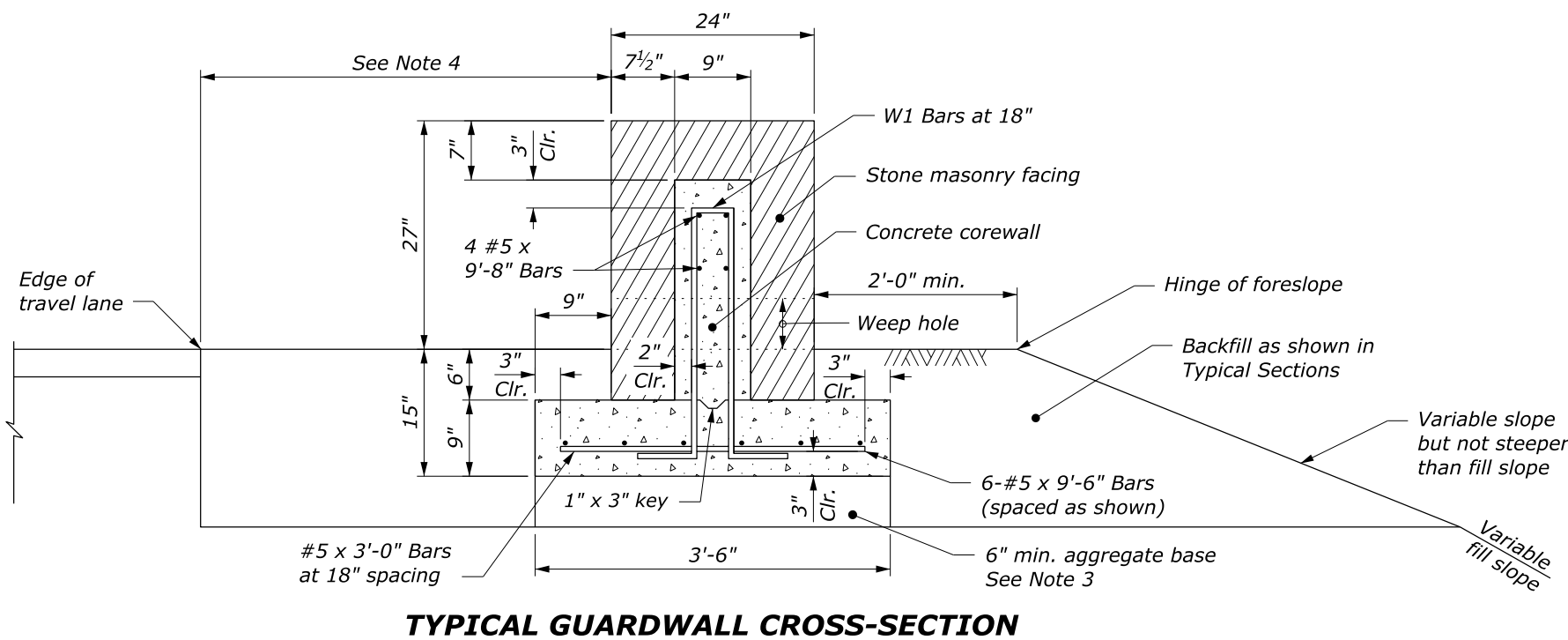
c:\pwwork\0297997\Std620-1.dgn [Std M620-1] 13 June 2024 7:56 AM



PRECAST CONCRETE COREWALL

NOTE:

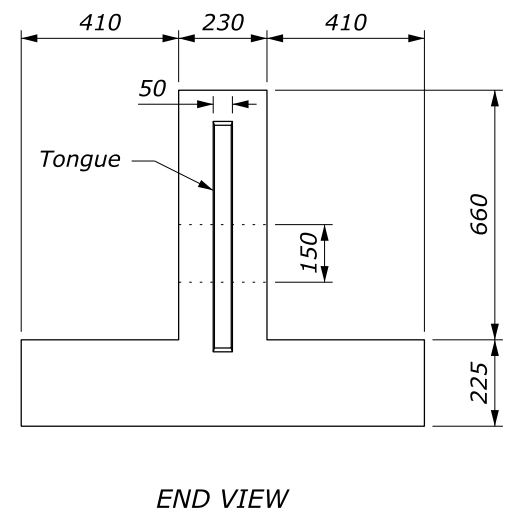
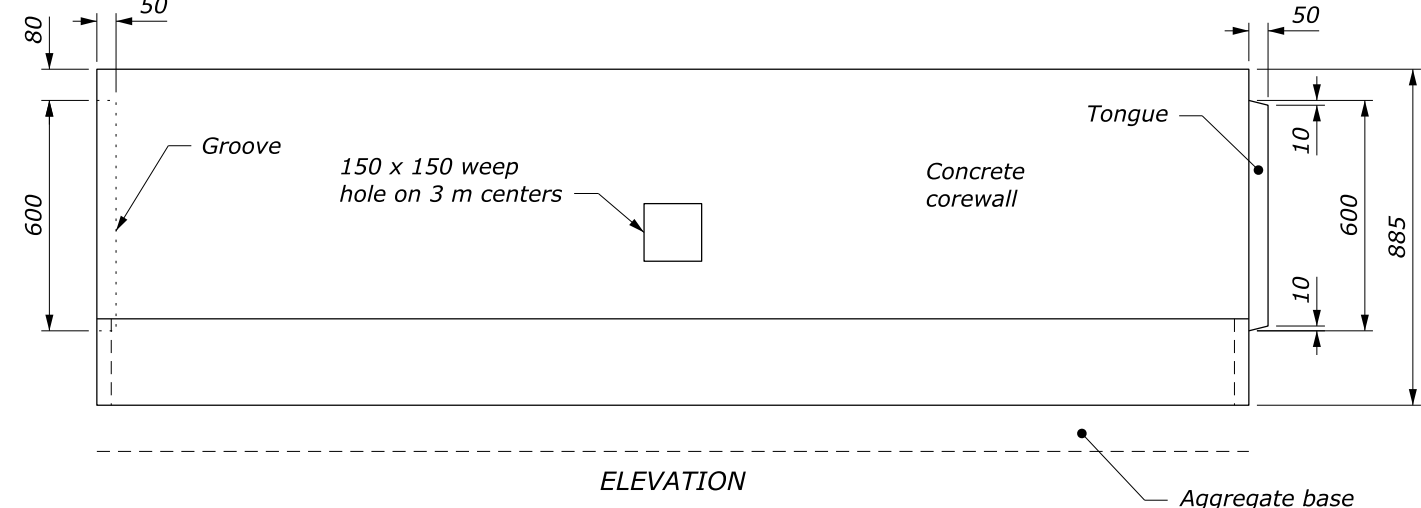
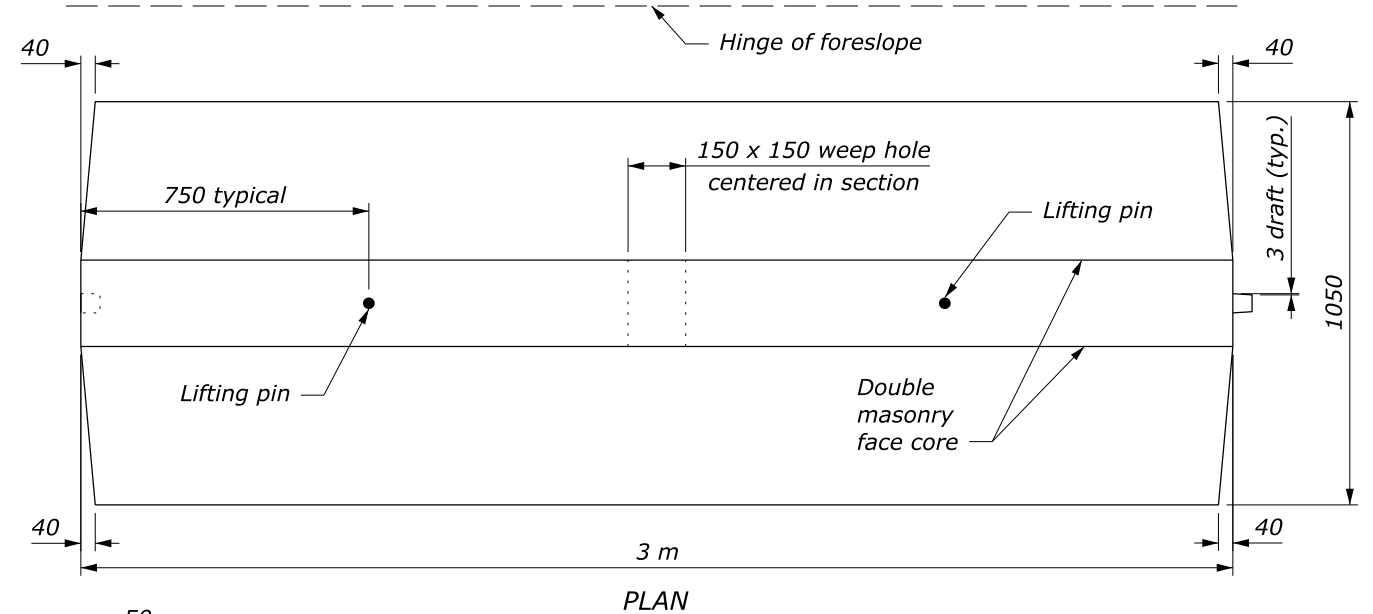
1. Form construction joints in the corewall at 30-foot intervals or, at the option of the Contractor, construct the corewall of precast concrete units.
2. Use cast-in-place corewall on curves with radius less than 150 feet.
3. Depth of aggregate base may be less than 6 inches when the foundation is on either rock fill or solid rock.
4. See Typical Sections for guardwall offset distance and pavement structure.
5. Set galvanized metal slots with anchors for the stone work or other approved type of metal anchors in the concrete. Equivalent attachment systems are allowed with approval.



W1 BAR BENDING DIAGRAM

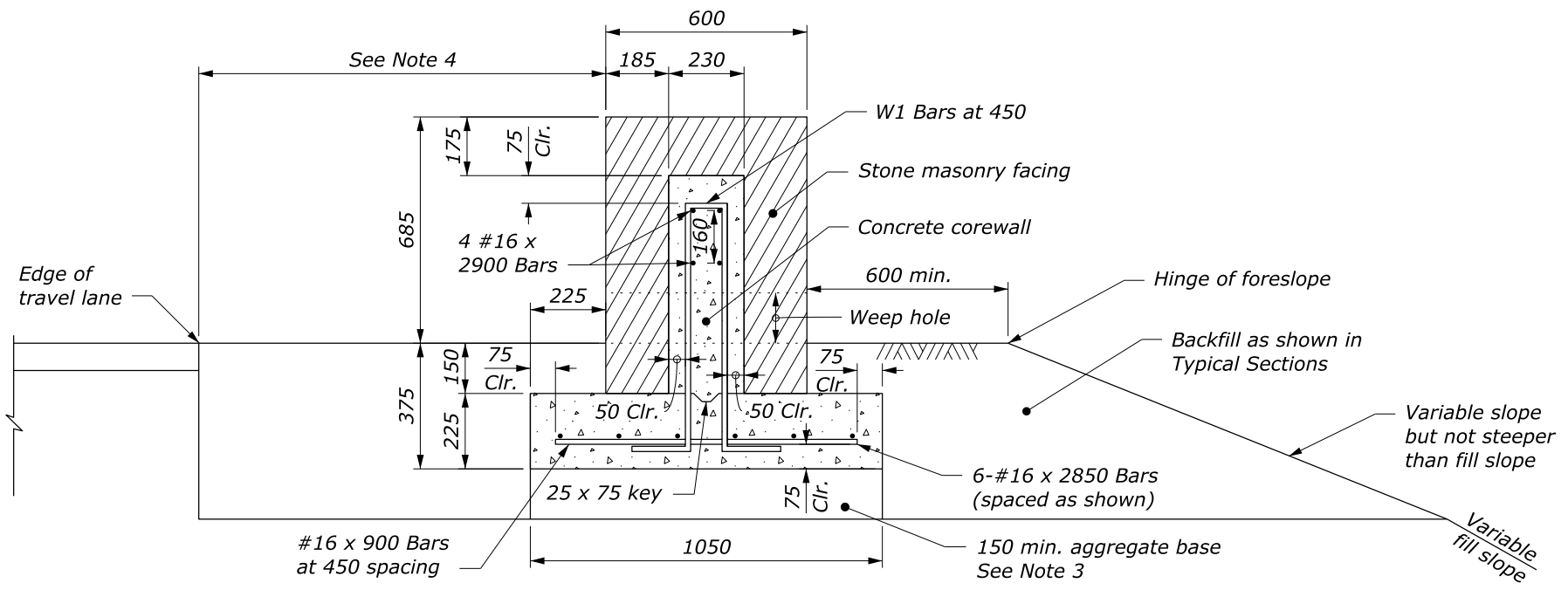
NO SCALE

U.S. DEPARTMENT OF TRANSPORTATION, FHWA OFFICE OF FEDERAL LANDS HIGHWAY	FLH STANDARD 620-2
STONE MASONRY GUARDWALL (DOUBLE FACE)	SPECIFICATION FP-24, FP-14
	APPROVED FOR USE 2/2024

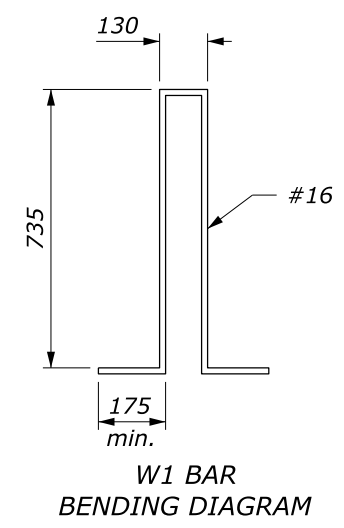


PRECAST CONCRETE COREWALL

- NOTE:**
1. Form construction joints in the corewall at 9 m intervals or, at the option of the Contractor, construct the corewall of precast concrete units.
 2. Use cast-in-place corewall on curves with radius less than 50 m.
 3. Depth of aggregate base may be less than 150 mm when the foundation is on either rock fill or solid rock.
 4. See Typical Sections for guardwall offset distance and pavement structure.
 5. Set galvanized metal slots with anchors for the stone work or other approved type of metal anchors in the concrete. Equivalent attachment systems are allowed with approval.



TYPICAL GUARDWALL CROSS-SECTION



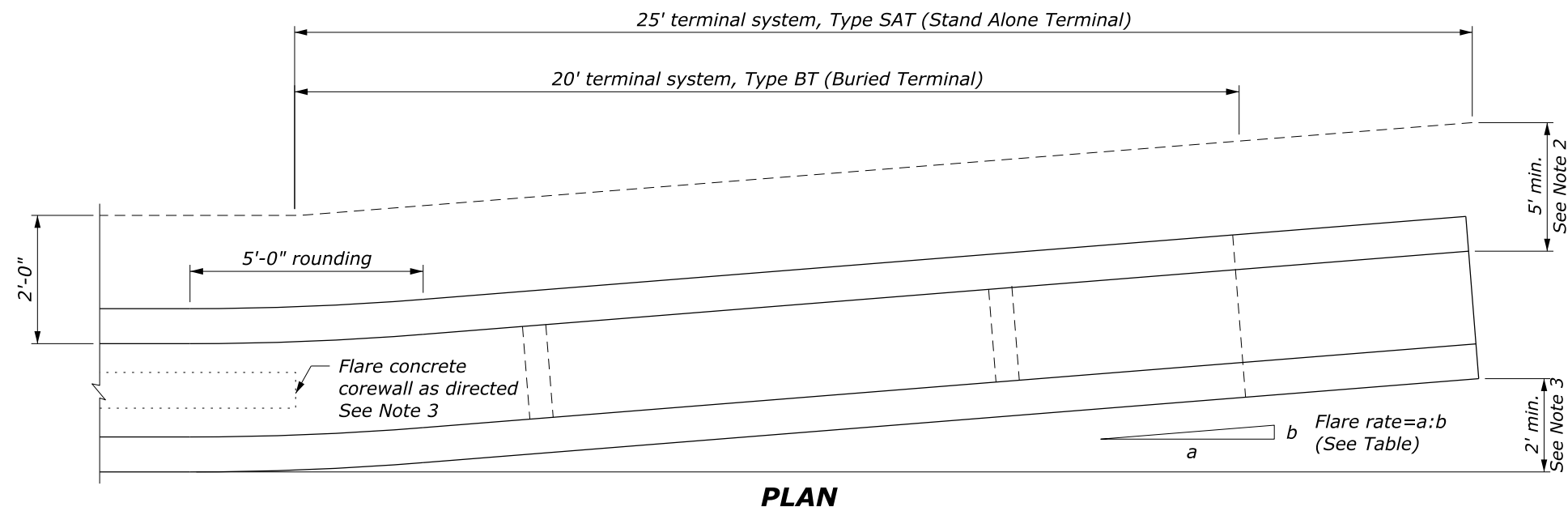
W1 BAR BENDING DIAGRAM

This drawing contains **Metric** units of measure. Dimensions without units are millimeters.

U.S. DEPARTMENT OF TRANSPORTATION, FHWA OFFICE OF FEDERAL LANDS HIGHWAY	FLH STANDARD M620-2
STONE MASONRY GUARDWALL (DOUBLE FACE)	SPECIFICATION FP-24, FP14
	APPROVED FOR USE 2/2024

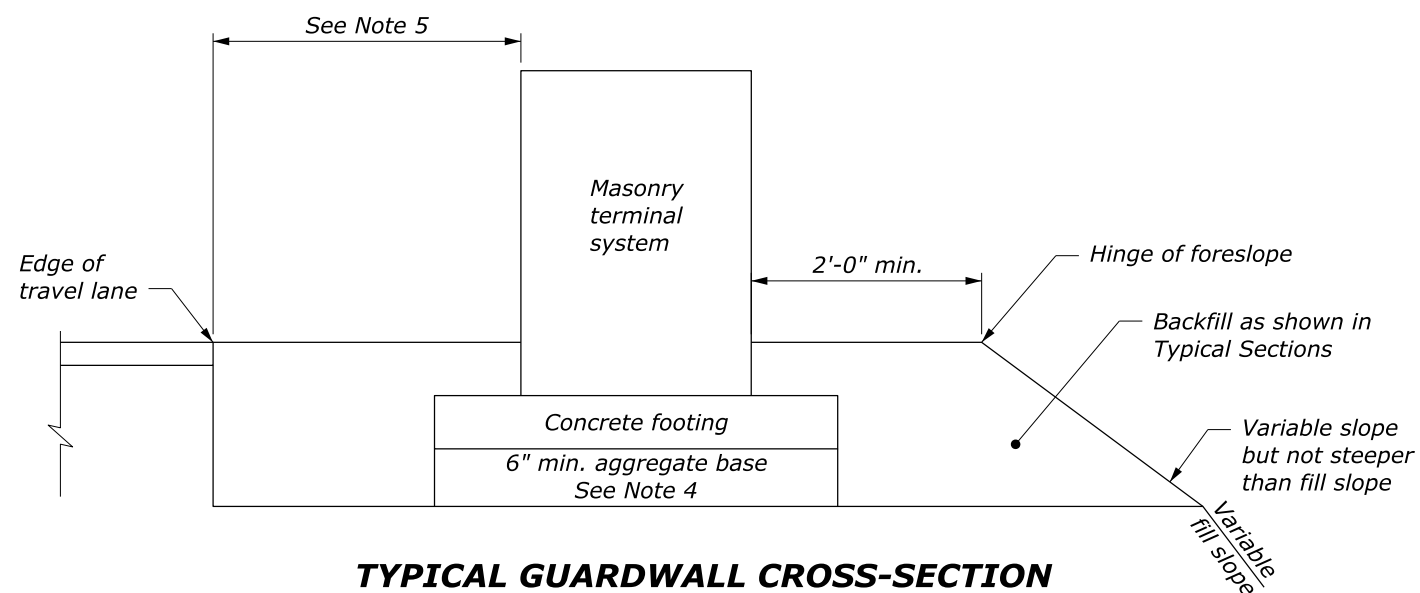
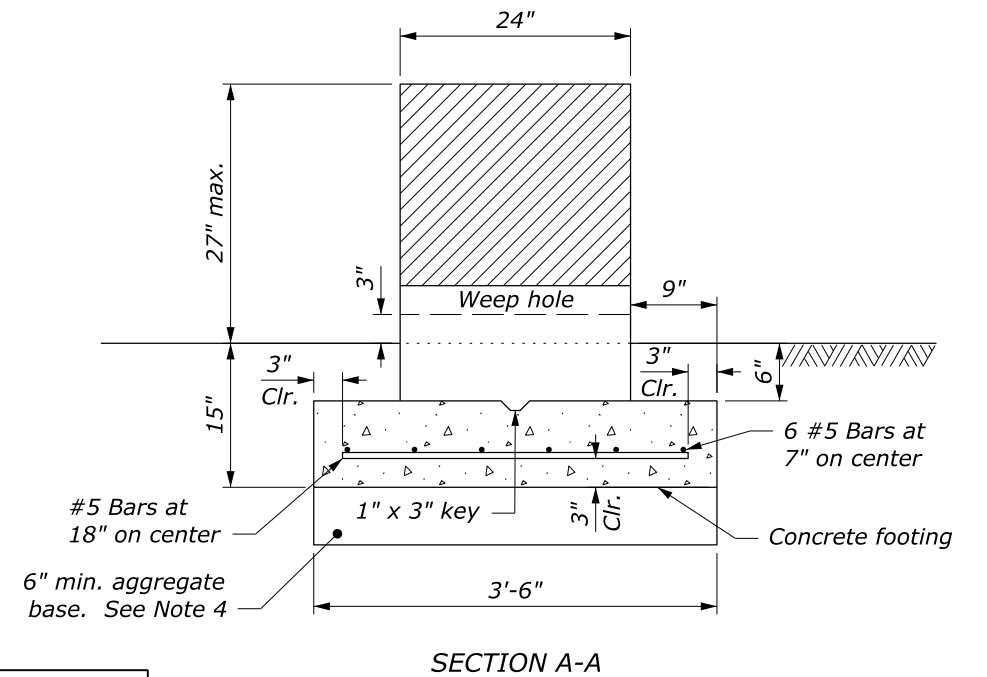
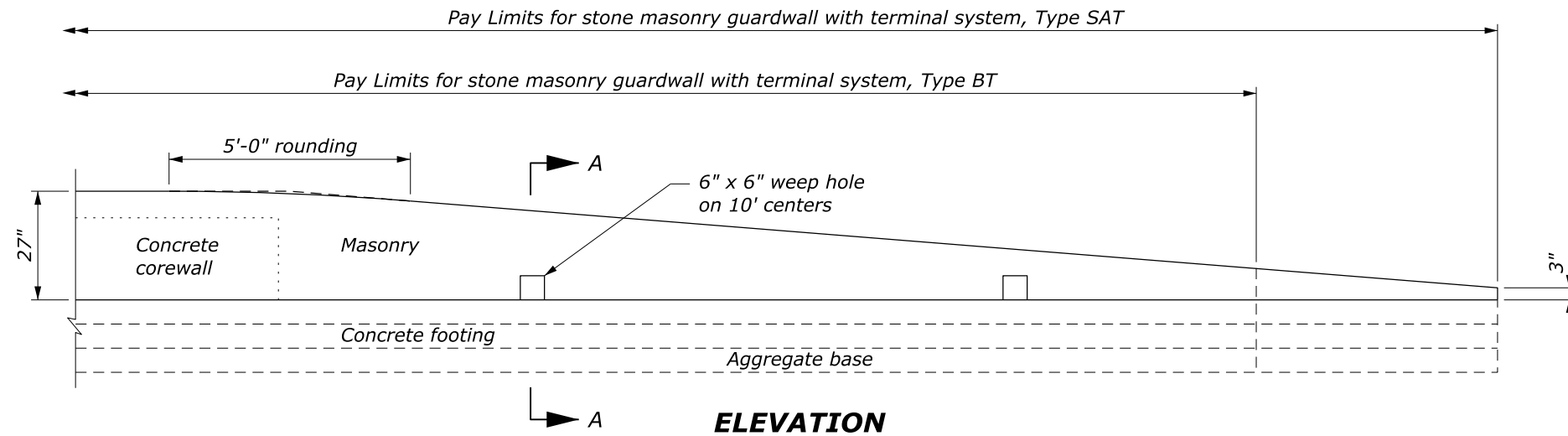
NO SCALE

c:\pwwork\0297997\Std620-2.dgn [Std M620-2] 13 June 2024 8:57 AM



NOTE:

1. Use the Type SAT terminal system or the Type BT terminal system as specified.
2. Extend the fill widening a minimum of 5 feet behind the guardwall for the Type SAT terminal system, unless otherwise directed.
3. The plan view guardwall flare indicates the minimum length and rate required. Flare the guardwall to locate the terminal system outside the clear zone as directed.
4. Depth of aggregate base may be less than 6 inches when the foundation is on either rock fill or solid rock.
5. See Typical Sections for guardwall offset distance and pavement structure.

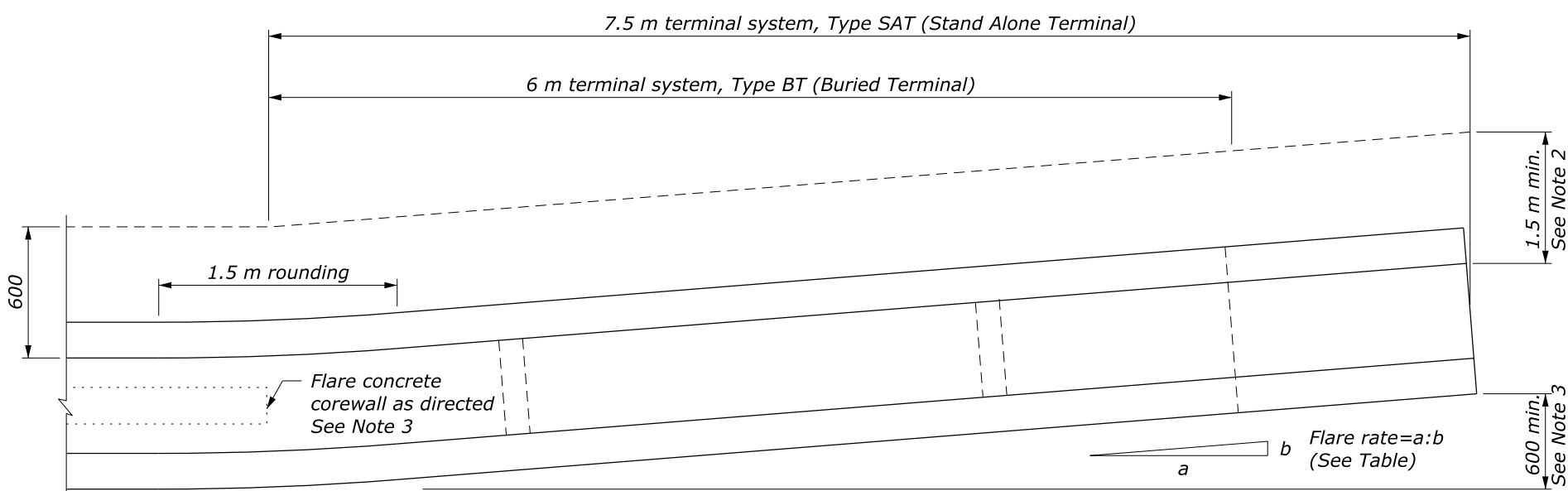


GUARDWALL FLARE RATE TABLE

Design Speed (mph)	Shy Line Offset (ft)	Flare Rate (a:b)	
		Inside Shy Line	Outside Shy Line
60	8.0	26:1	18:1
50	6.5	21:1	14:1
40	4.5	16:1	10:1
30 or less	3.5	13:1	8:1

NO SCALE

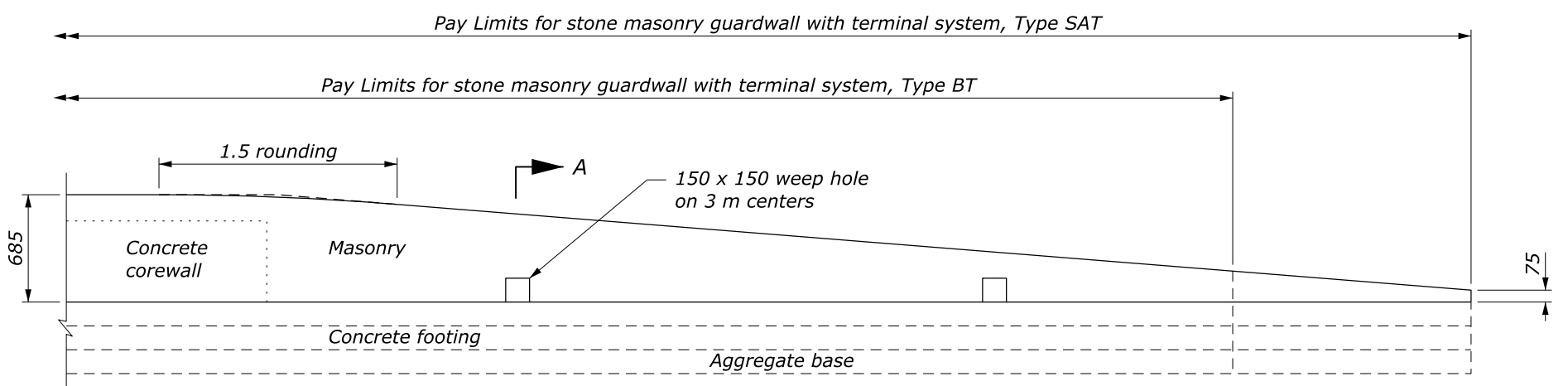
U.S. DEPARTMENT OF TRANSPORTATION, FHWA OFFICE OF FEDERAL LANDS HIGHWAY	FLH STANDARD 620-3
STONE MASONRY GUARDWALL TERMINAL SYSTEMS TYPE SAT AND TYPE BT	SPECIFICATION FP-24, FP-14
	APPROVED FOR USE 2/2024



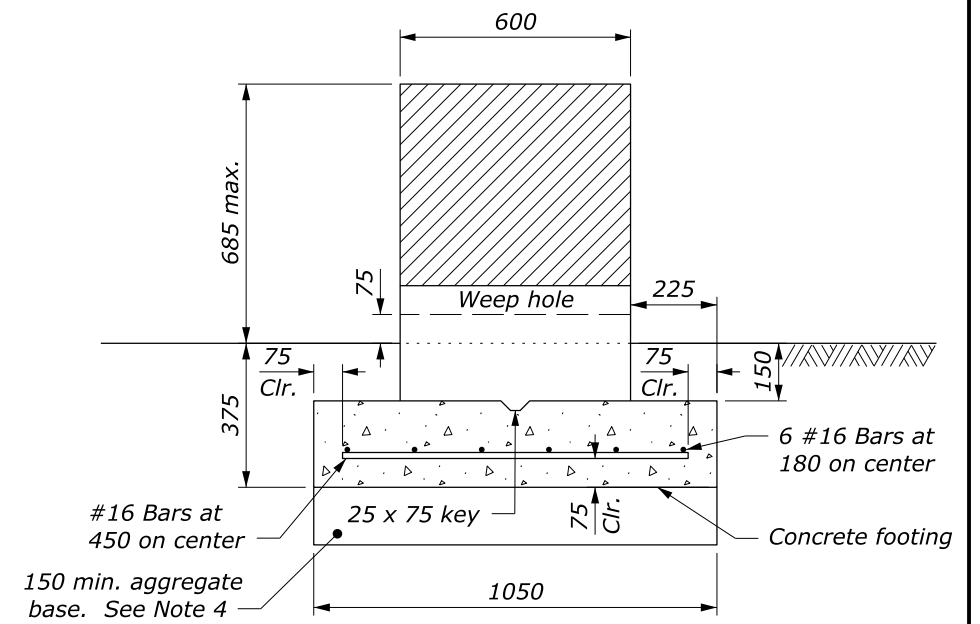
PLAN

NOTE:

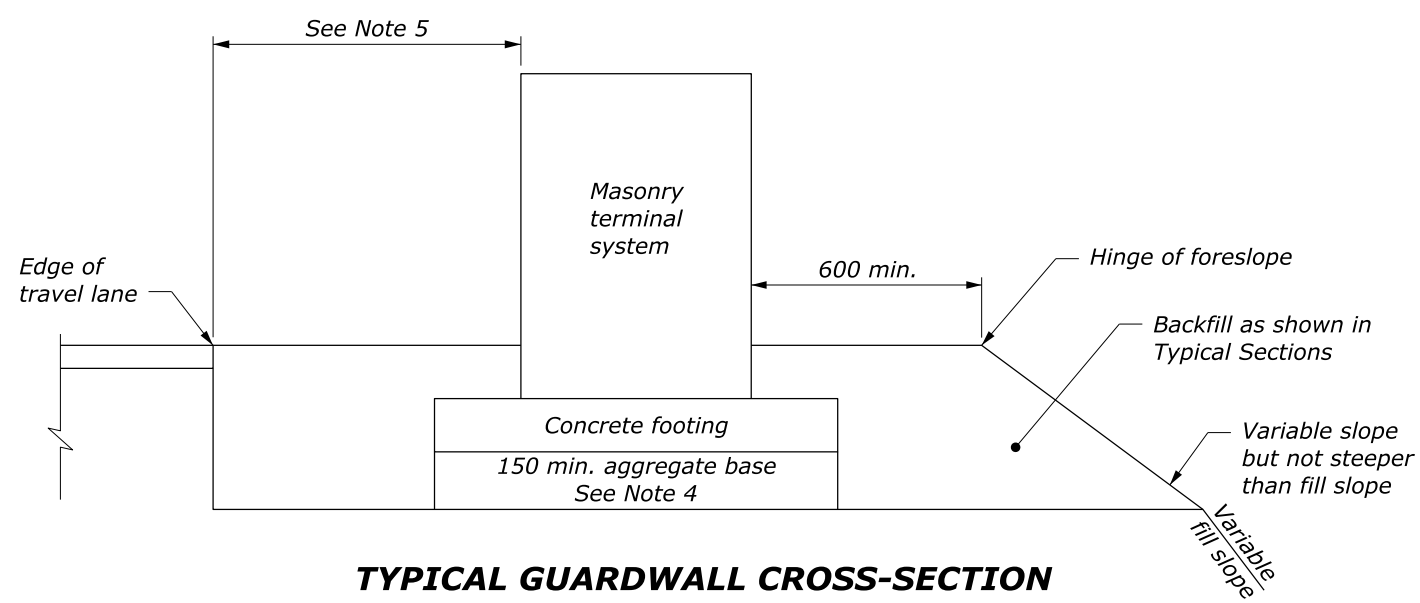
1. Use the Type SAT terminal system or the Type BT terminal system as specified.
2. Extend the fill widening a minimum of 1.5 m behind the guardwall for the Type SAT terminal system, unless otherwise directed.
3. The plan view guardwall flare indicates the minimum length and rate required. Flare the guardwall to locate the terminal system outside the clear zone as directed.
4. Depth of aggregate base may be less than 150 mm when the foundation is on either rock fill or solid rock.
5. See Typical Sections for guardwall offset distance and pavement structure.



ELEVATION



SECTION A-A



TYPICAL GUARDWALL CROSS-SECTION

Design Speed (km/h)	Shy Line Offset (meters)	Flare Rate (a:b)	
		Inside Shy Line	Outside Shy Line
100	2.4	26:1	18:1
80	2.0	21:1	14:1
60	1.4	16:1	10:1
50 or less	1.1	13:1	8:1

This drawing contains **Metric** units of measure. Dimensions without units are millimeters.

U.S. DEPARTMENT OF TRANSPORTATION, FHWA OFFICE OF FEDERAL LANDS HIGHWAY	FLH STANDARD M620-3
STONE MASONRY GUARDWALL TERMINAL SYSTEMS TYPE SAT AND TYPE BT	SPECIFICATION FP-24, FP-14
	APPROVED FOR USE 2/2024

NO SCALE