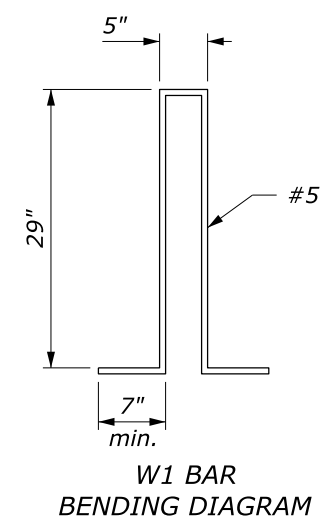
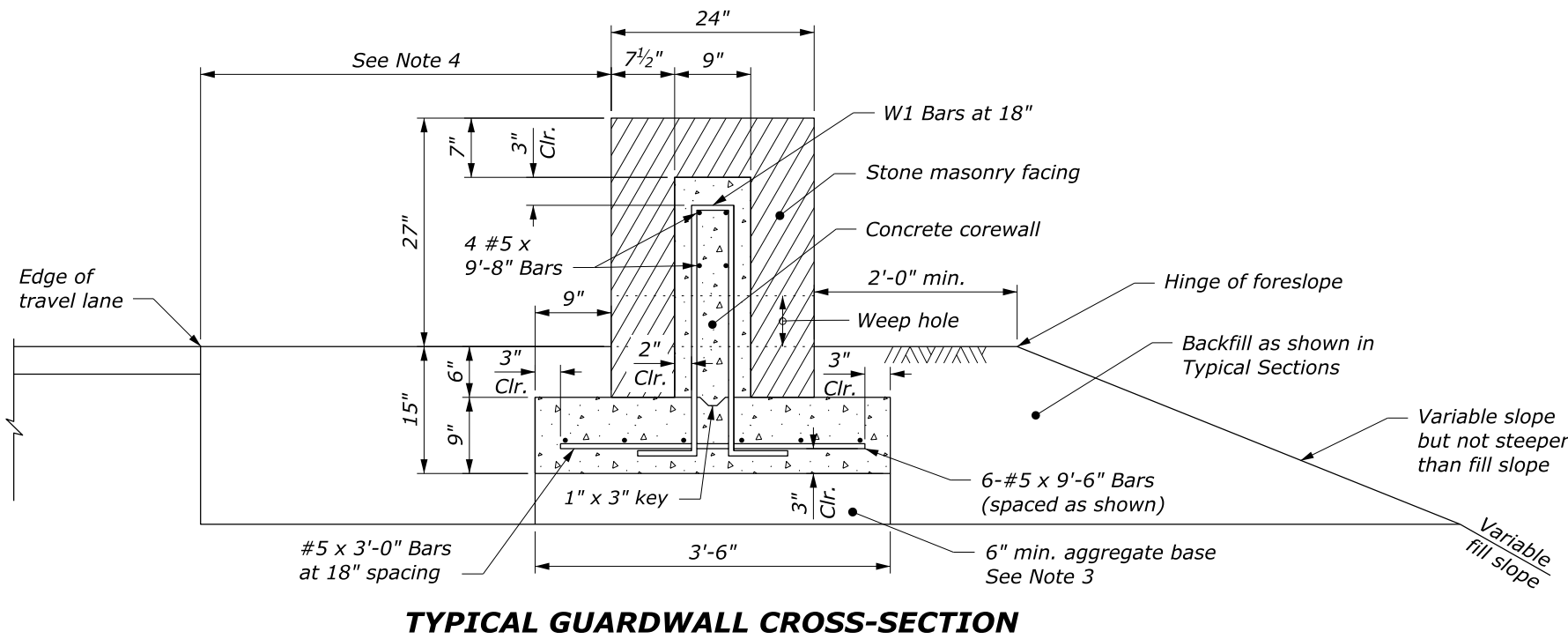


PRECAST CONCRETE COREWALL

NOTE:

1. Form construction joints in the corewall at 30-foot intervals or, at the option of the Contractor, construct the corewall of precast concrete units.
2. Use cast-in-place corewall on curves with radius less than 150 feet.
3. Depth of aggregate base may be less than 6 inches when the foundation is on either rock fill or solid rock.
4. See Typical Sections for guardwall offset distance and pavement structure.
5. Set galvanized metal slots with anchors for the stone work or other approved type of metal anchors in the concrete. Equivalent attachment systems are allowed with approval.

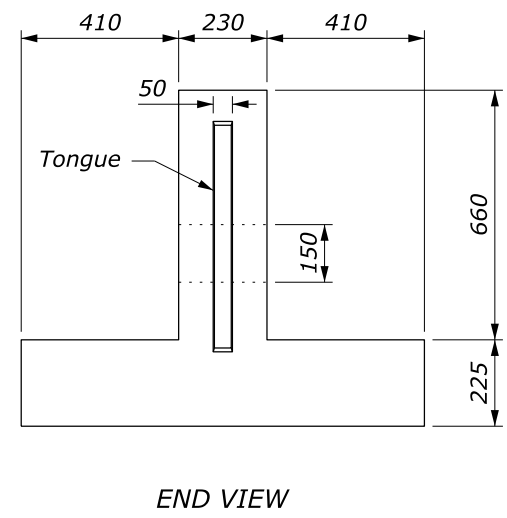
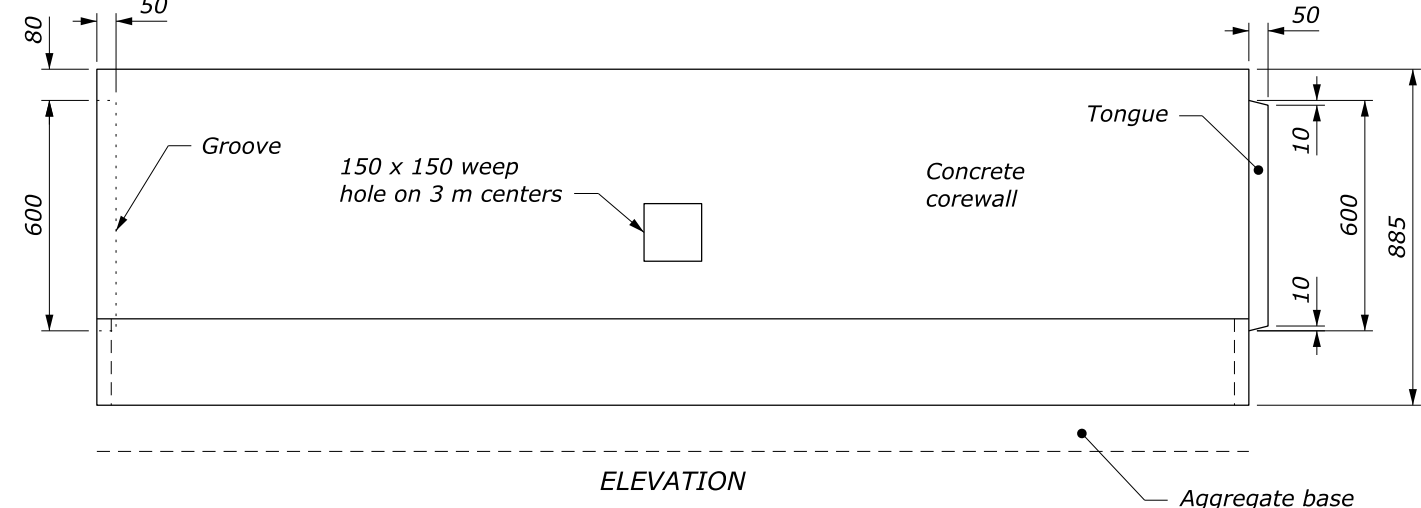
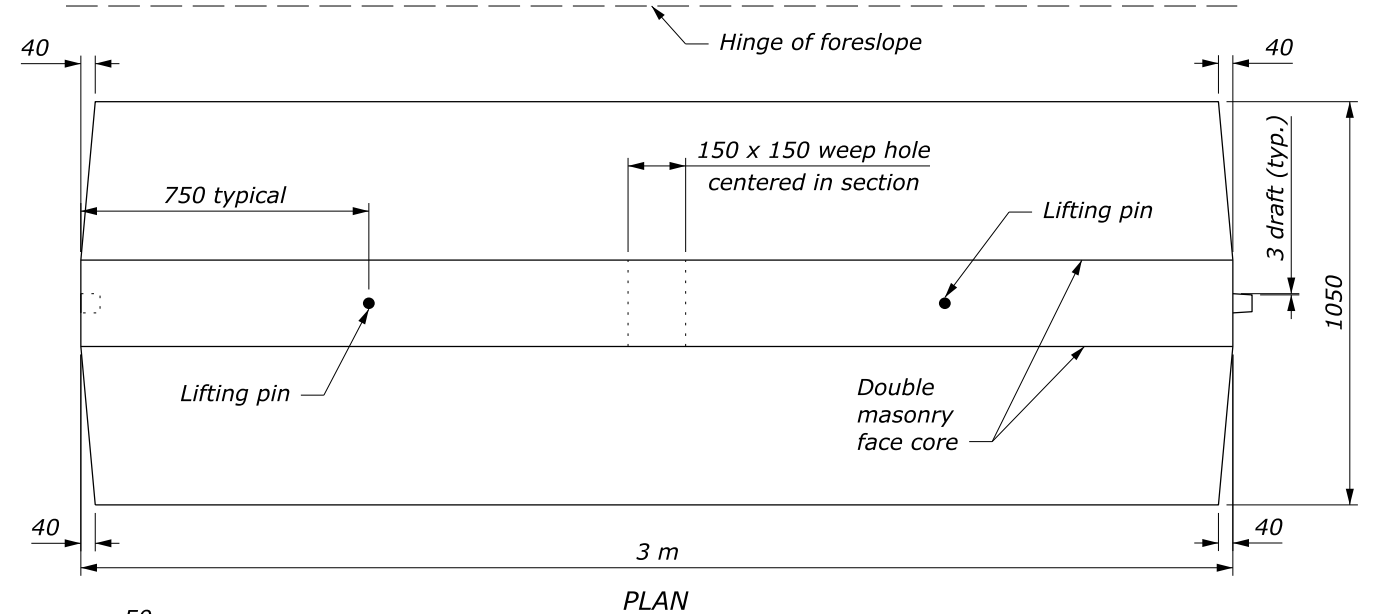


W1 BAR BENDING DIAGRAM

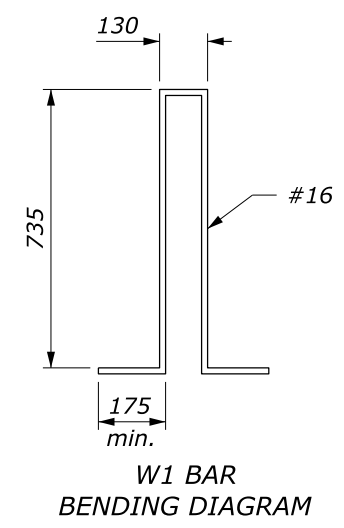
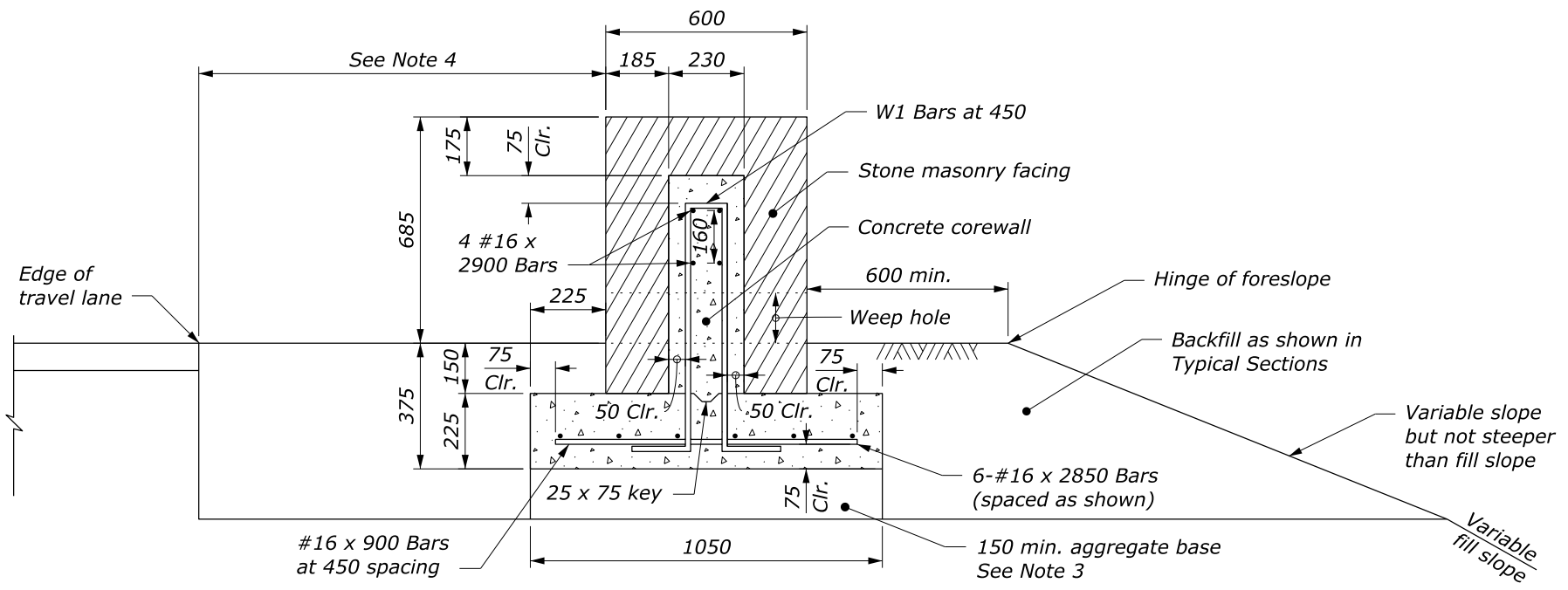
NO SCALE

| | |
|----------------------------------------------------------------------------|-------------------------------|
| U.S. DEPARTMENT OF TRANSPORTATION, FHWA OFFICE OF FEDERAL LANDS HIGHWAY | FLH STANDARD 620-2 |
| STONE MASONRY GUARDWALL (DOUBLE FACE) | SPECIFICATION FP-24, FP-14 |
| | APPROVED FOR USE 2/2024 |

c:\pwwork\00297997\Std620-2.dgn [Std 620-2] 13 June 2024 8:59 AM



PRECAST CONCRETE COREWALL



- NOTE:**
1. Form construction joints in the corewall at 9 m intervals or, at the option of the Contractor, construct the corewall of precast concrete units.
 2. Use cast-in-place corewall on curves with radius less than 50 m.
 3. Depth of aggregate base may be less than 150 mm when the foundation is on either rock fill or solid rock.
 4. See Typical Sections for guardwall offset distance and pavement structure.
 5. Set galvanized metal slots with anchors for the stone work or other approved type of metal anchors in the concrete. Equivalent attachment systems are allowed with approval.

This drawing contains **Metric** units of measure. Dimensions without units are millimeters.

| | |
|----------------------------------------------------------------------------|------------------------------|
| U.S. DEPARTMENT OF TRANSPORTATION, FHWA OFFICE OF FEDERAL LANDS HIGHWAY | FLH STANDARD M620-2 |
| STONE MASONRY GUARDWALL (DOUBLE FACE) | SPECIFICATION FP-24, FP14 |
| | APPROVED FOR USE 2/2024 |

NO SCALE