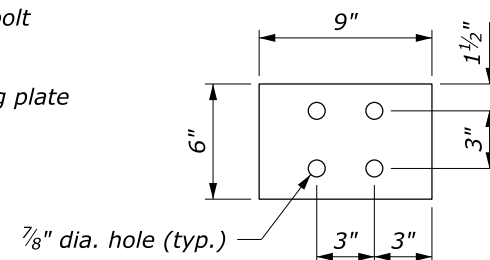
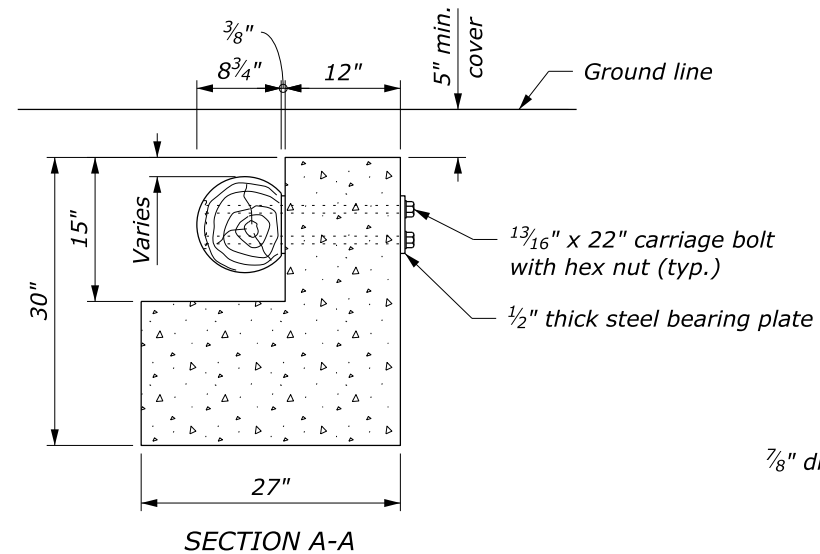
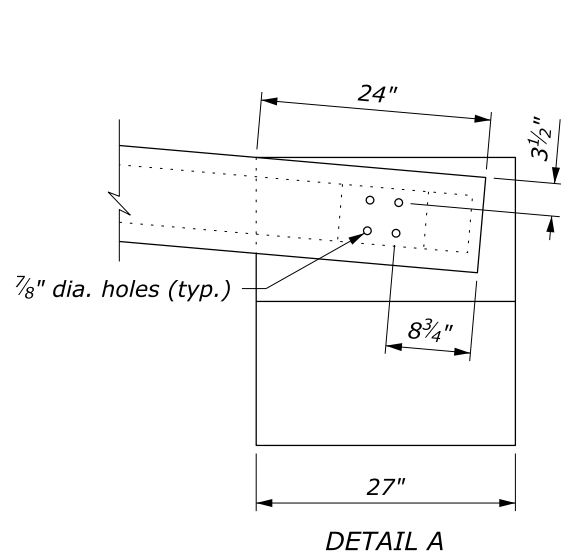


APPROACH & DEPARTURE FLARE WITH FLARED ANCHOR TERMINAL (FAT)

GUARDRAIL FLARE RATE TABLE			
DESIGN SPEED MPH	SHY LINE OFFSET FEET	FLARE RATE (a:b)	
		INSIDE SHY LINE	OUTSIDE SHY LINE
60	8.0	26:1	14:1
50	6.5	21:1	11:1
40	5.0	16:1	8:1
30 and less	4.0	13:1	7:1



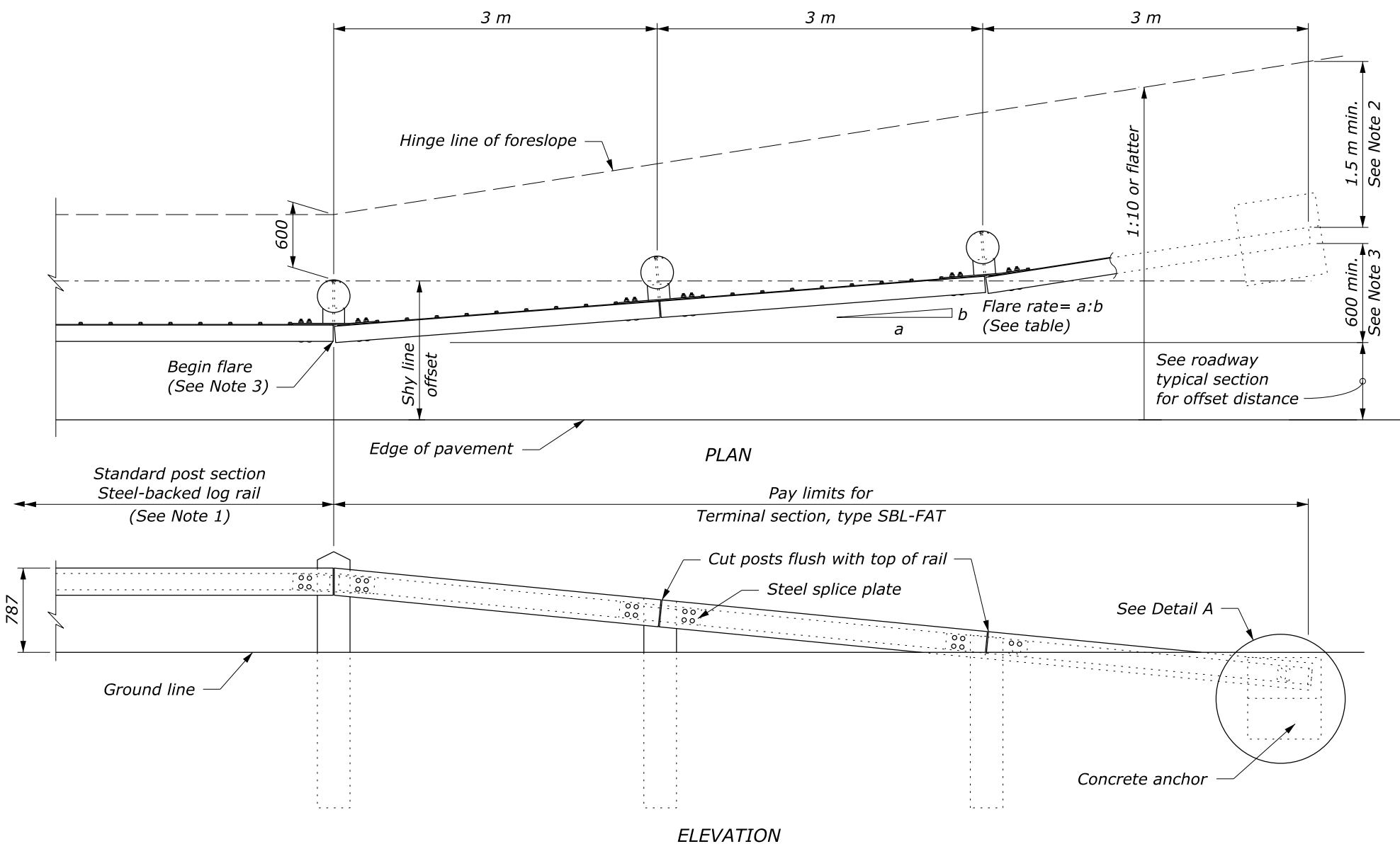
STEEL BEARING PLATE

NO SCALE

NOTE:

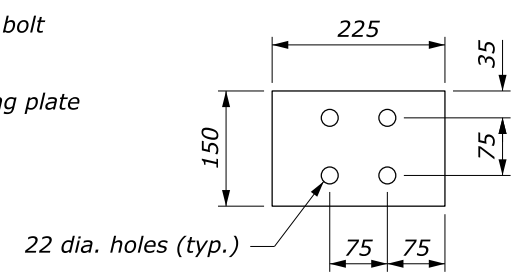
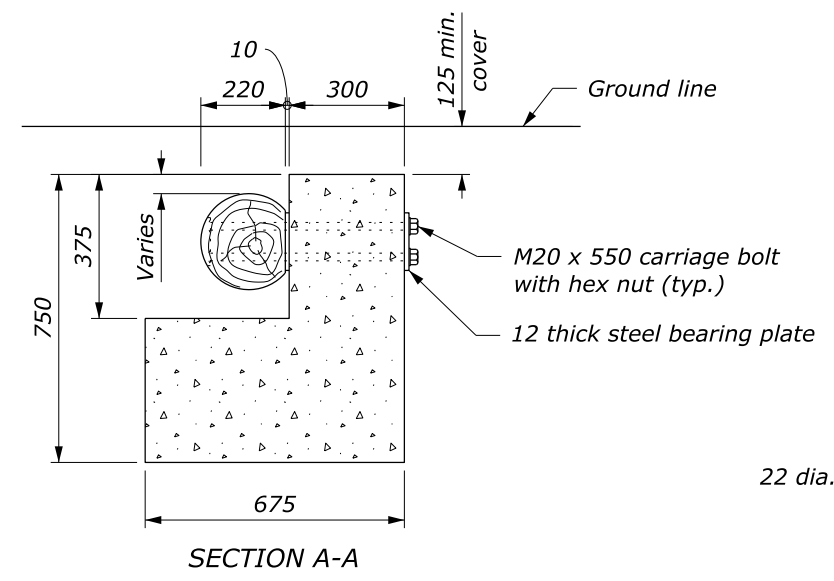
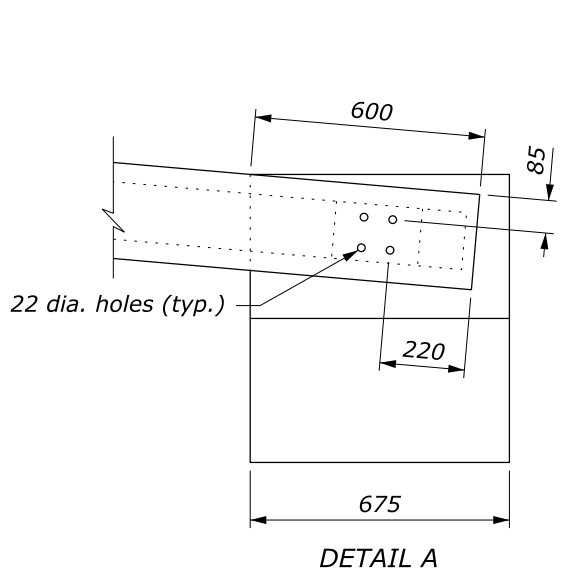
1. See Standard 617-80 and 617-81, Steel-Backed Log Rail, for timber, structural steel, and hardware details.
2. Extend the fill widening a minimum of 5 feet behind the guardrail, unless otherwise directed.
3. The guardrail flare shown in the plan view is the minimum length and rate required. As directed, flare the guardrail so that the terminal section is outside the clear zone. If the terminal section cannot be located outside the clear zone, it should be flared as far as practical from the road at the maximum rate indicated on the Guardrail Flare Rate table.

U.S. DEPARTMENT OF TRANSPORTATION, FHWA OFFICE OF FEDERAL LANDS HIGHWAY	FLH STANDARD 617-82
STEEL-BACKED LOG RAIL TERMINAL SECTION TYPE SBL-FAT	SPECIFICATION FP-14
	APPROVED FOR USE 1/2024



APPROACH & DEPARTURE FLARE WITH FLARED ANCHOR TERMINAL (FAT)

GUARDRAIL FLARE RATE TABLE			
DESIGN SPEED km/h	SHY LINE OFFSET m	FLARE RATE (a:b)	
		INSIDE SHY LINE	OUTSIDE SHY LINE
100	2.5	26:1	14:1
80	2.0	21:1	11:1
60	1.5	16:1	8:1
50 and less	1.2	13:1	7:1



CONCRETE ANCHOR

STEEL BEARING PLATE

NO SCALE

- NOTE:**
- See Standard M617-80 and M617-81, Steel-Backed Log Rail, for timber, structural steel, and hardware details.
 - Extend the fill widening a minimum of 1.5 m behind the guardrail, unless otherwise directed.
 - The guardrail flare shown in the plan view is the minimum length and rate required. As directed, flare the guardrail so that the terminal section is outside the clear zone. If the terminal section cannot be located outside the clear zone, it should be flared as far as practical from the road at the maximum rate indicated on the Guardrail Flare Rate table.
 - Provide hardware in the metric sizes shown. Equivalent US Customary sizes may be used when metric sizes are not available.

This drawing contains **Metric** units of measure. Dimensions without units are millimeters.

U.S. DEPARTMENT OF TRANSPORTATION, FHWA OFFICE OF FEDERAL LANDS HIGHWAY	FLH STANDARD M617-82
STEEL-BACKED LOG RAIL TERMINAL SECTION TYPE SBL-FAT	SPECIFICATION FP-14
	APPROVED FOR USE 1/2024