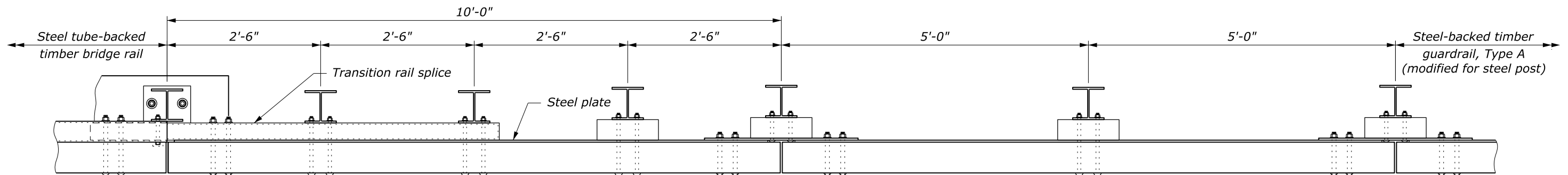


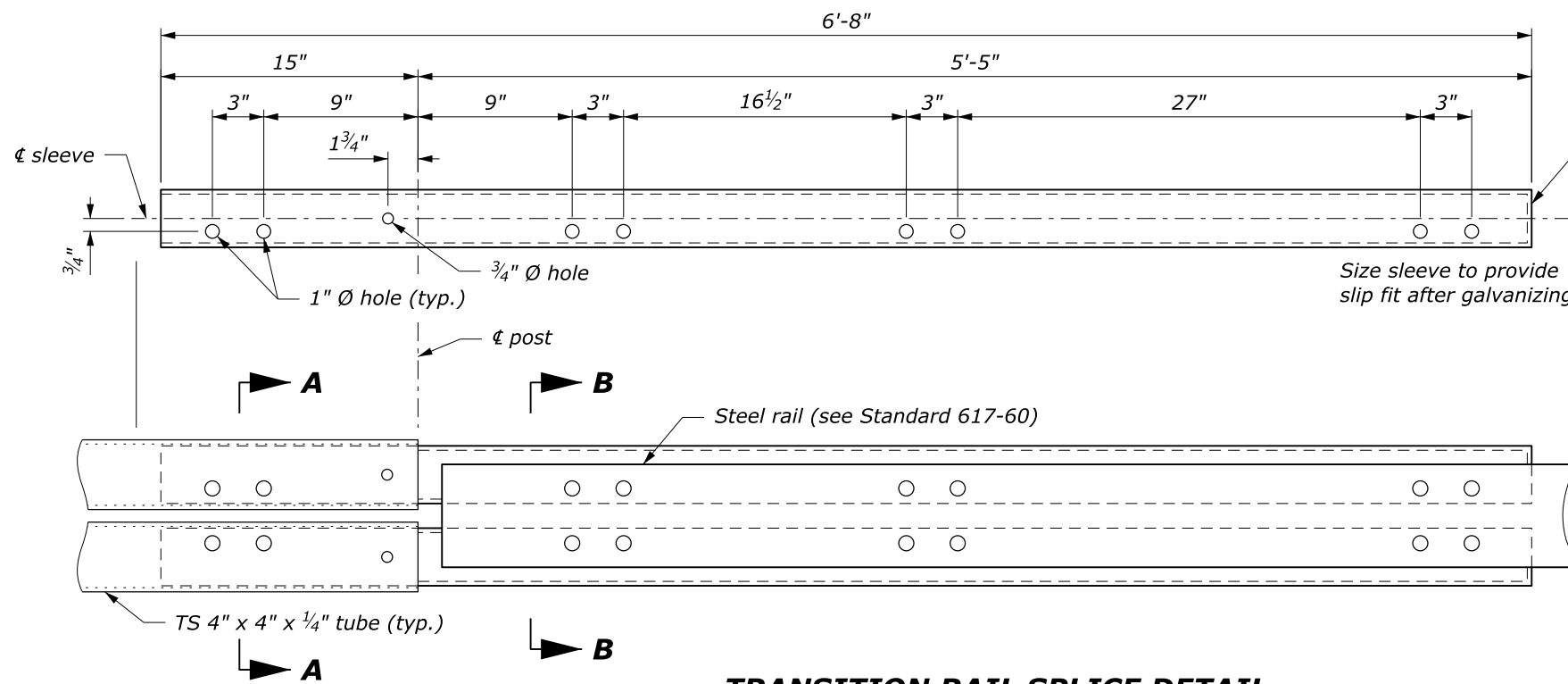
RAIL TRANSITION ELEVATION

NOTE:

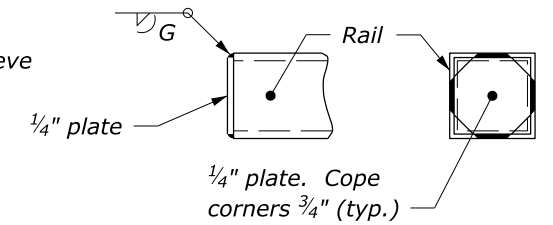
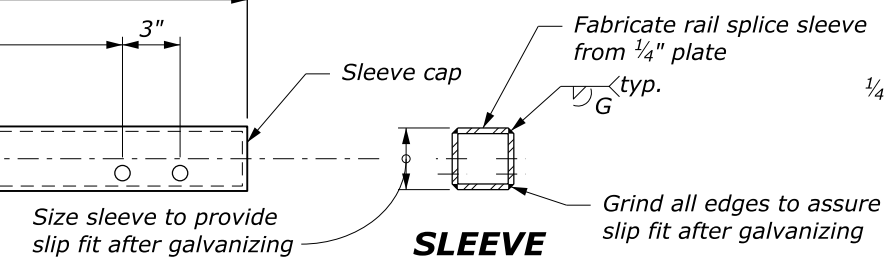
1. At each additional post provide 2⁵/₈" diameter round head square neck bolts with plate washer and hex nut, a 3/4" x 2 1/2" slot in steel plate, and 3/4" Ø holes in timber rail, steel post, and timber blockout. See Standard 617-60, Steel-backed timber guardrail, Type A (modified for steel post).



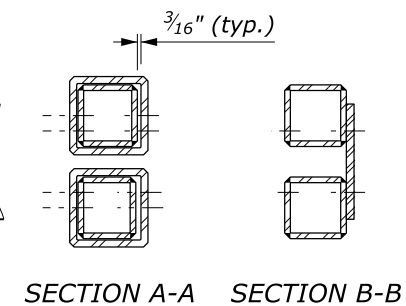
RAIL TRANSITION PLAN



TRANSITION RAIL SPLICE DETAIL



SLEEVE CAP DETAIL

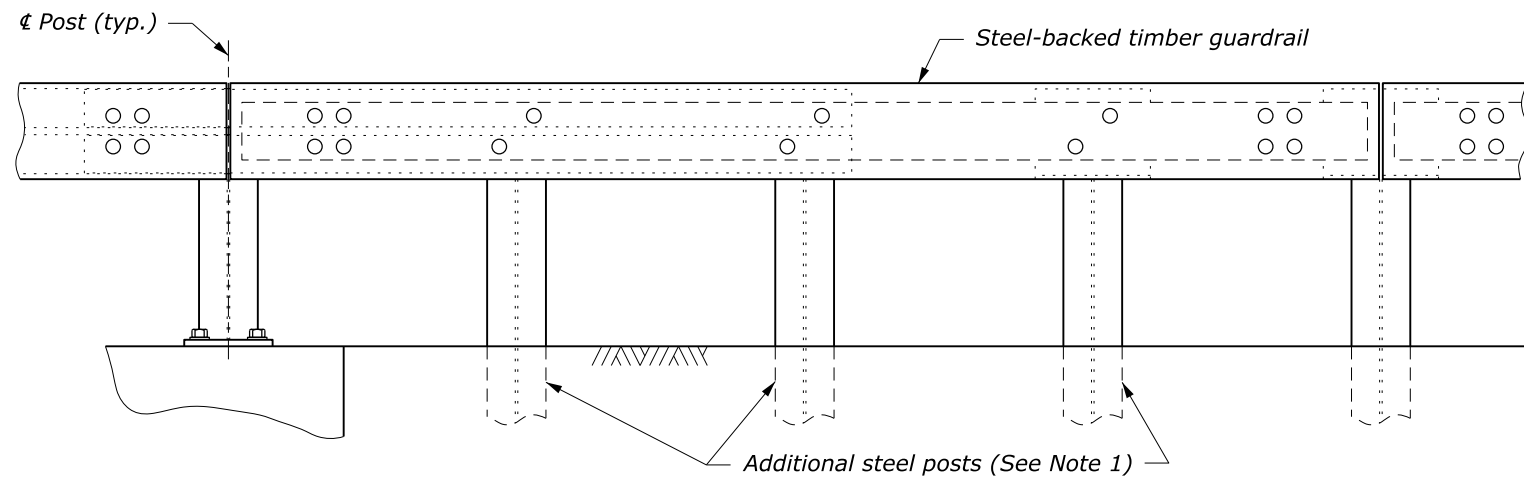


SECTION A-A SECTION B-B

NO SCALE

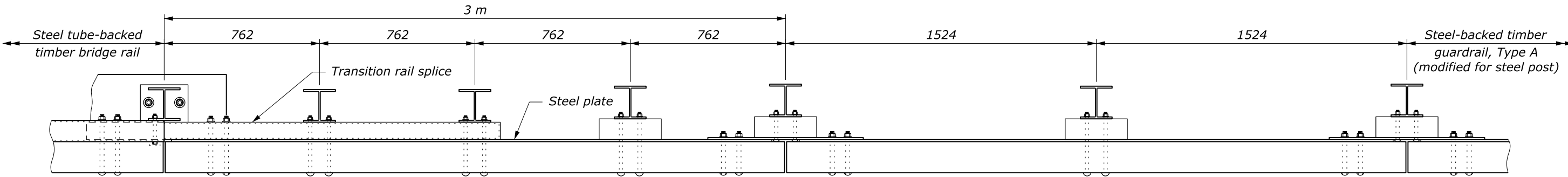
U.S. DEPARTMENT OF TRANSPORTATION, FHWA
OFFICE OF FEDERAL LANDS HIGHWAY
**STEEL-BACKED TIMBER GUARDRAIL
CONNECTION TO TUBULAR STEEL-
BACKED TIMBER BRIDGE RAIL**

FLH STANDARD
617-68
SPECIFICATION
FP-24, FP-14
APPROVED FOR USE
2/20204

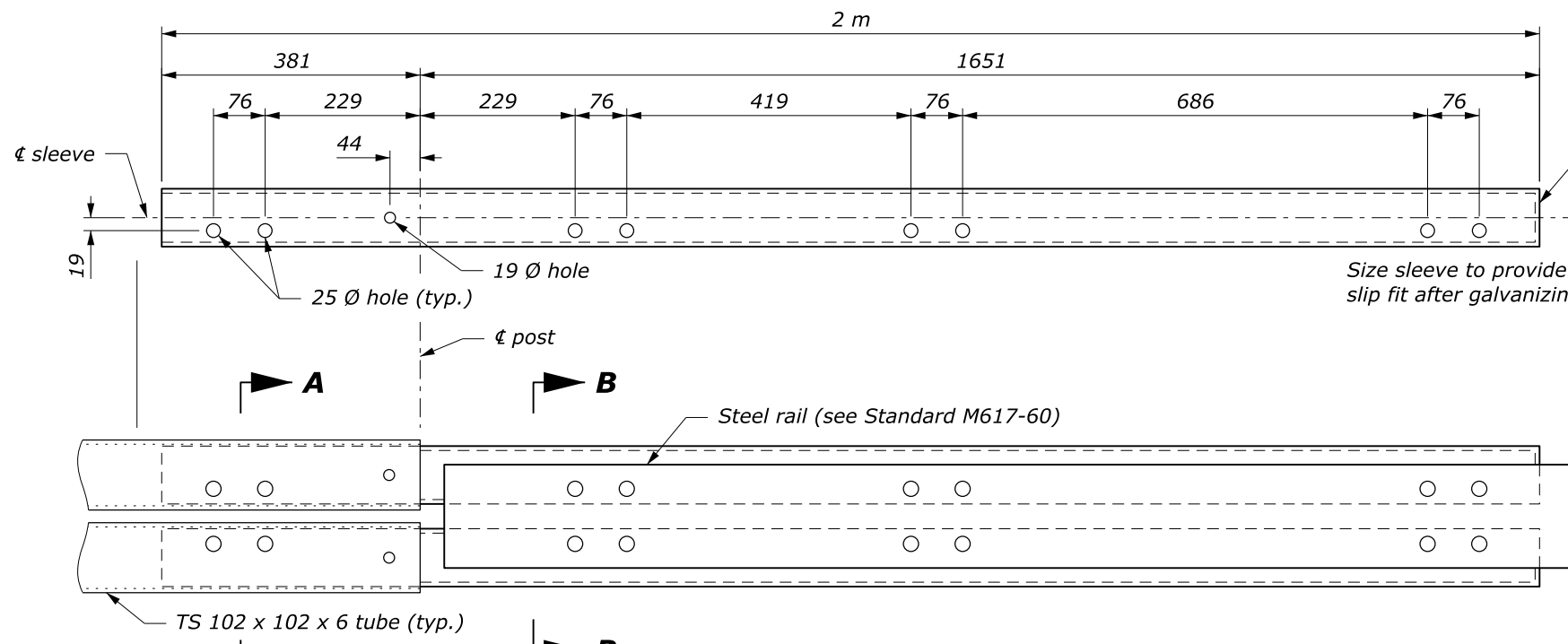


RAIL TRANSITION ELEVATION

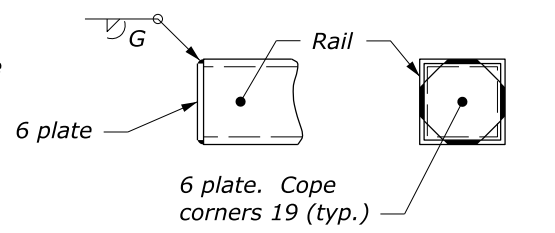
NOTE:
 1. At each additional post provide 67 mm diameter round head square neck bolts with plate washer and hex nut, a 19 x 64 mm slot in steel plate, and 19 mm Ø holes in timber rail, steel post, and timber blockout. See Standard M617-60, Steel-backed timber guardrail, Type A (modified for steel post).



RAIL TRANSITION PLAN



TRANSITION RAIL SPLICE DETAIL



SLEEVE CAP DETAIL

This drawing contains **Metric** units of measure. Dimensions without units are millimeters.

U.S. DEPARTMENT OF TRANSPORTATION, FHWA OFFICE OF FEDERAL LANDS HIGHWAY	FLH STANDARD M617-68
STEEL-BACKED TIMBER GUARDRAIL CONNECTION TO TUBULAR STEEL- BACKED TIMBER BRIDGE RAIL	SPECIFICATION FP-24, FP-14
	APPROVED FOR USE 2/2024

NO SCALE

c:\pwwork\0419223\Std617-68.dgn [Std M617-68] 2.1 June 2024 2:43 PM