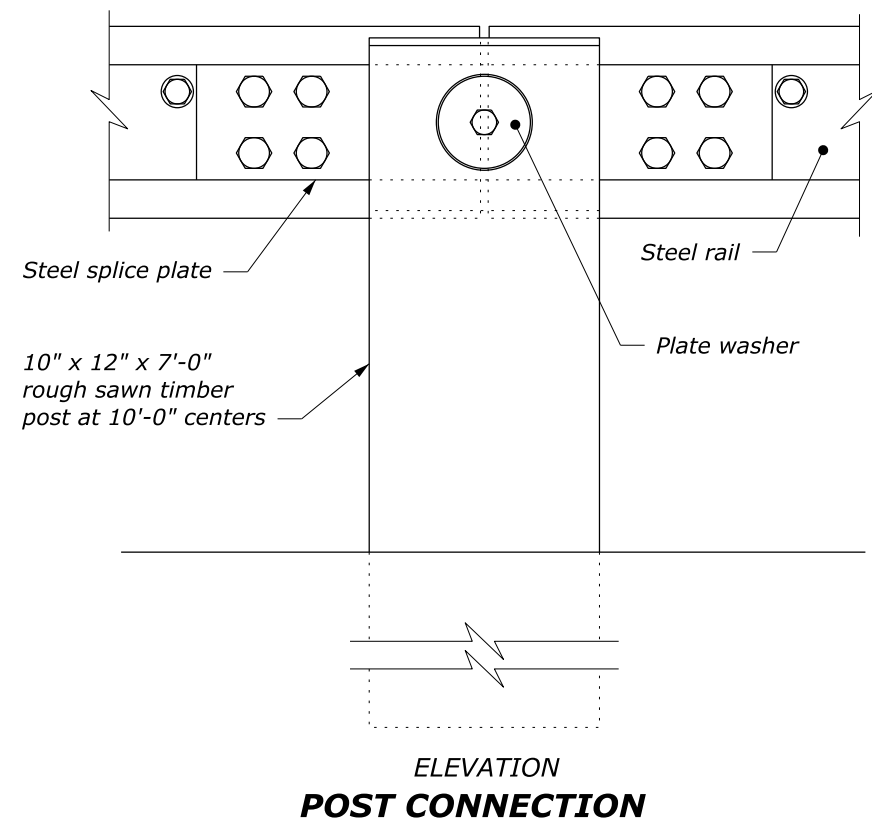
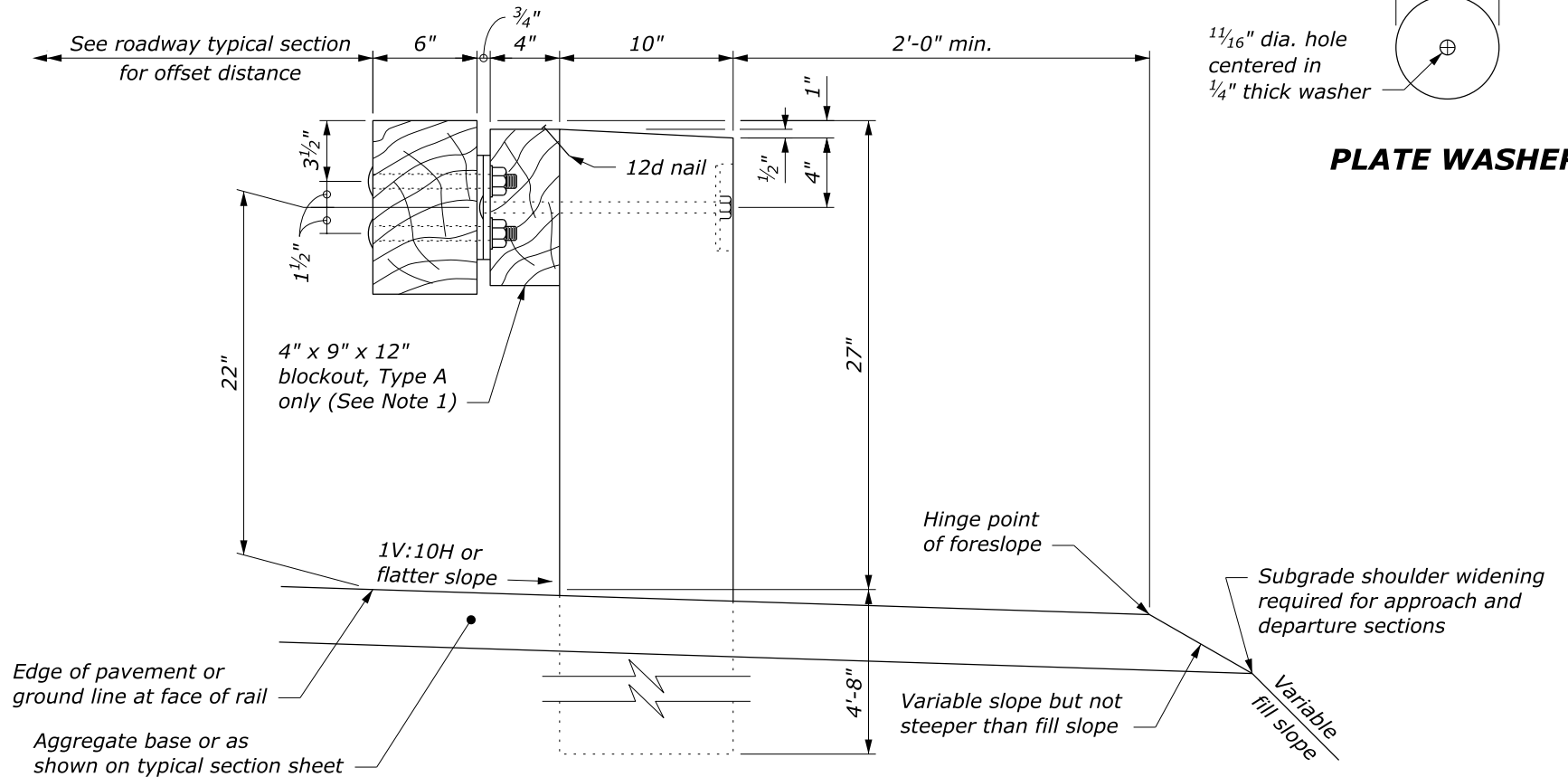
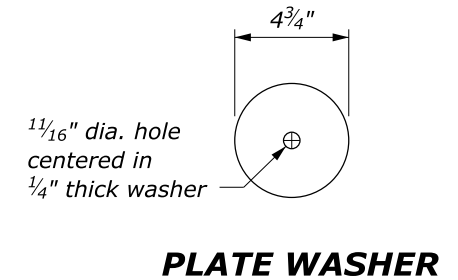
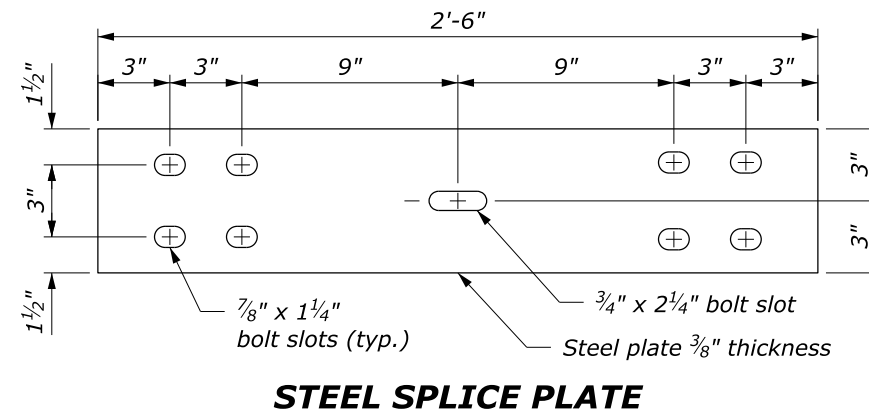
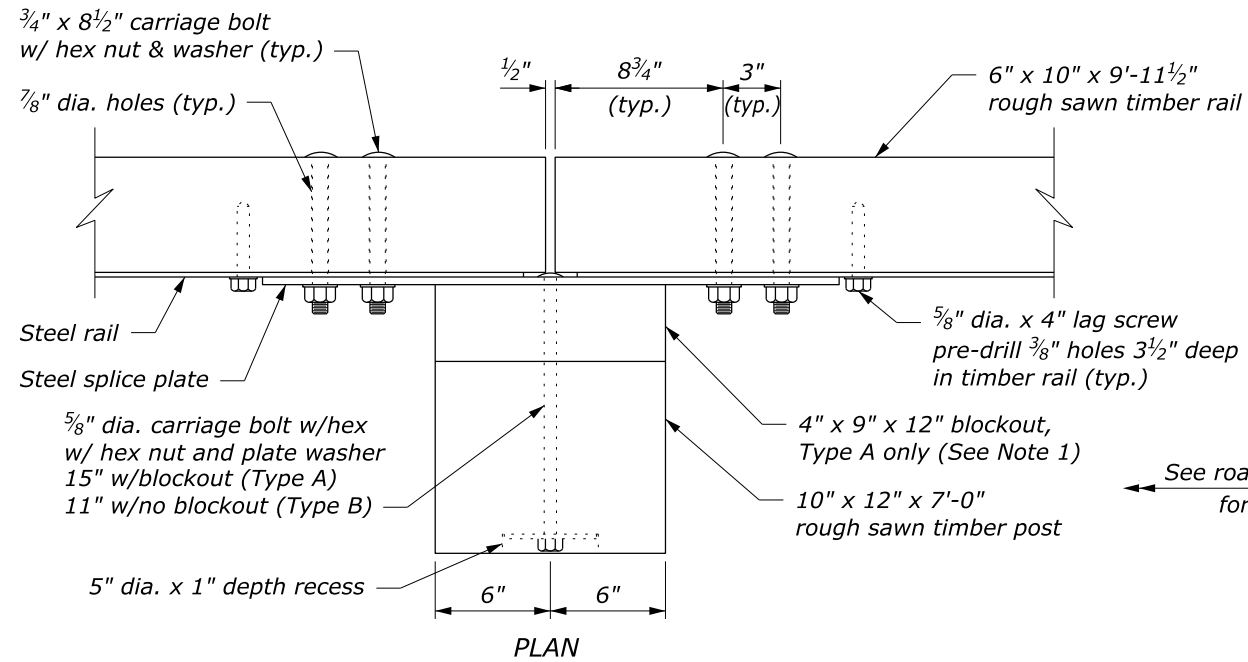


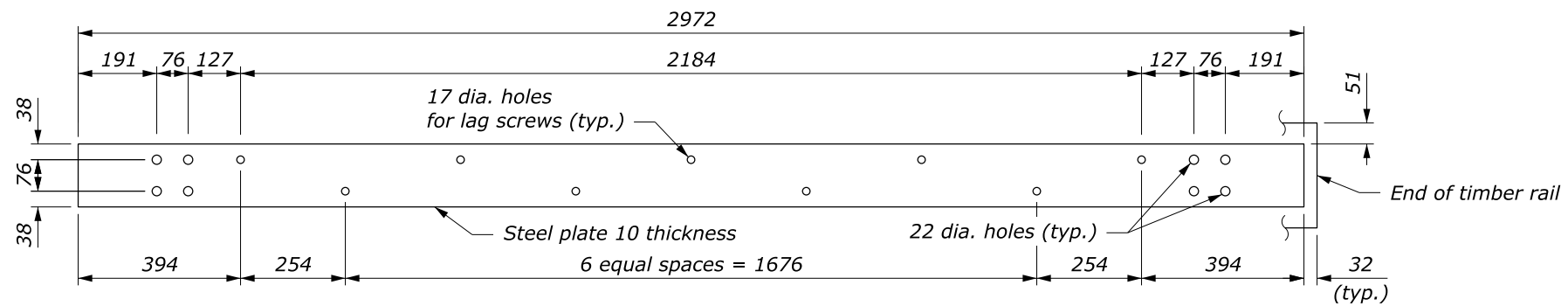
**NOTE:**

1. Use the Type A, blocked-out, system or the Type B, non-blocked-out, system as specified.
2. Use weathering steel for all structural steel and fastener hardware.
3. Place a terminal (see Standards 617-61 and 617-62) on both approach and trailing ends of barrier installations.



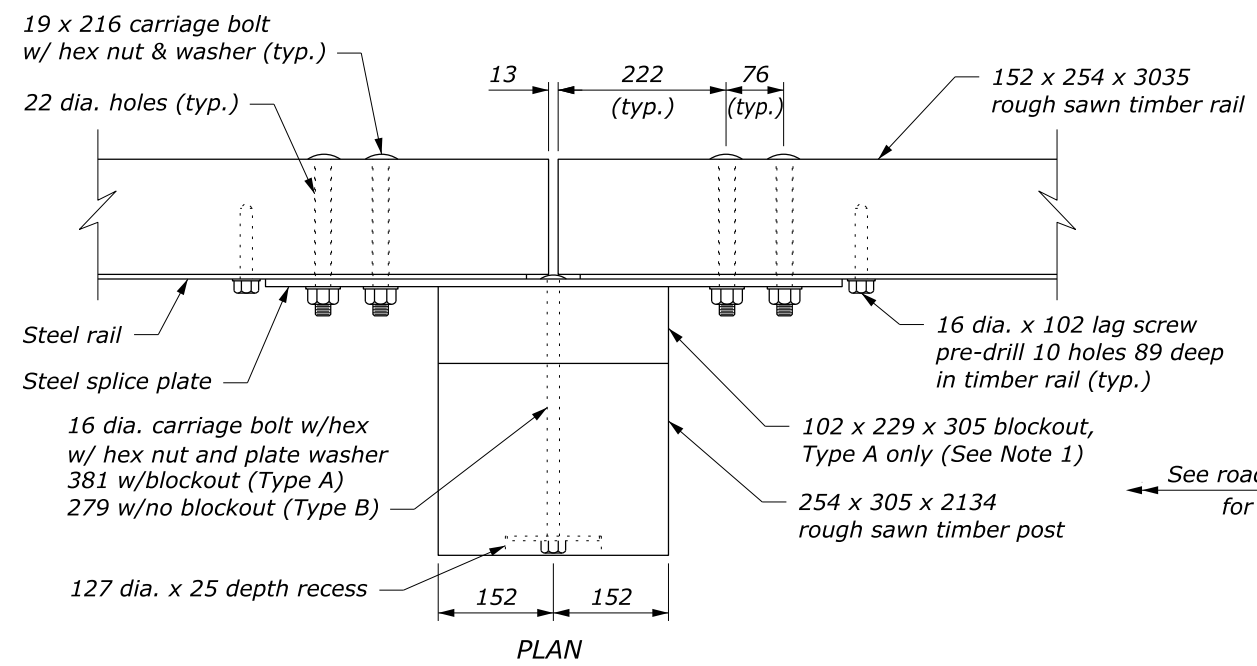
NO SCALE

U.S. DEPARTMENT OF TRANSPORTATION, FHWA OFFICE OF FEDERAL LANDS HIGHWAY	FLH STANDARD 617-60
<b>STEEL-BACKED TIMBER GUARDRAIL TYPE A &amp; TYPE B</b>	SPECIFICATION FP-14, FP-24
	APPROVED FOR USE 2/2024

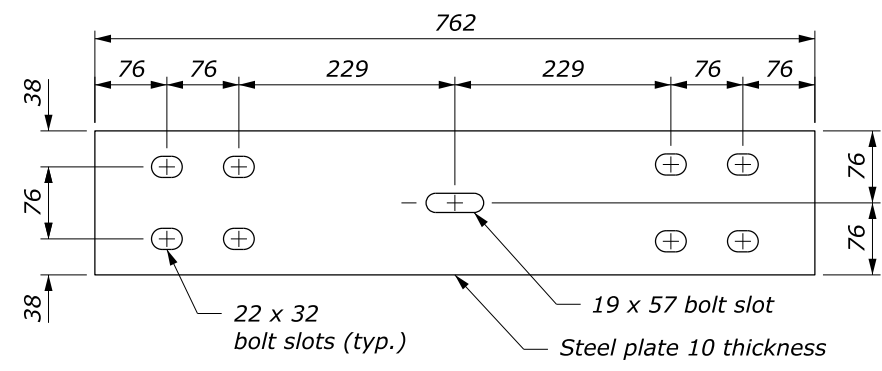


**STEEL RAIL**

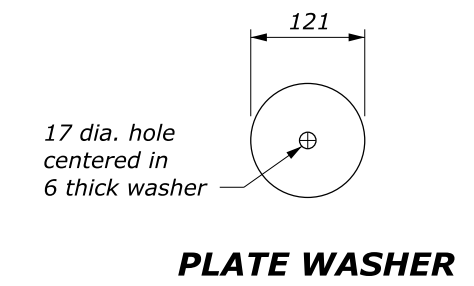
- NOTE:**
1. Use the Type A, blocked-out, system or the Type B, non-blocked-out, system as specified.
  2. Use weathering steel for all structural steel and fastener hardware.
  3. Place a terminal (see Standards M617-61 and M617-62) on both approach and trailing ends of barrier installations.
  4. Provide hardware in the metric sizes shown. Equivalent US Customary sizes may be used when metric sizes are unavailable.



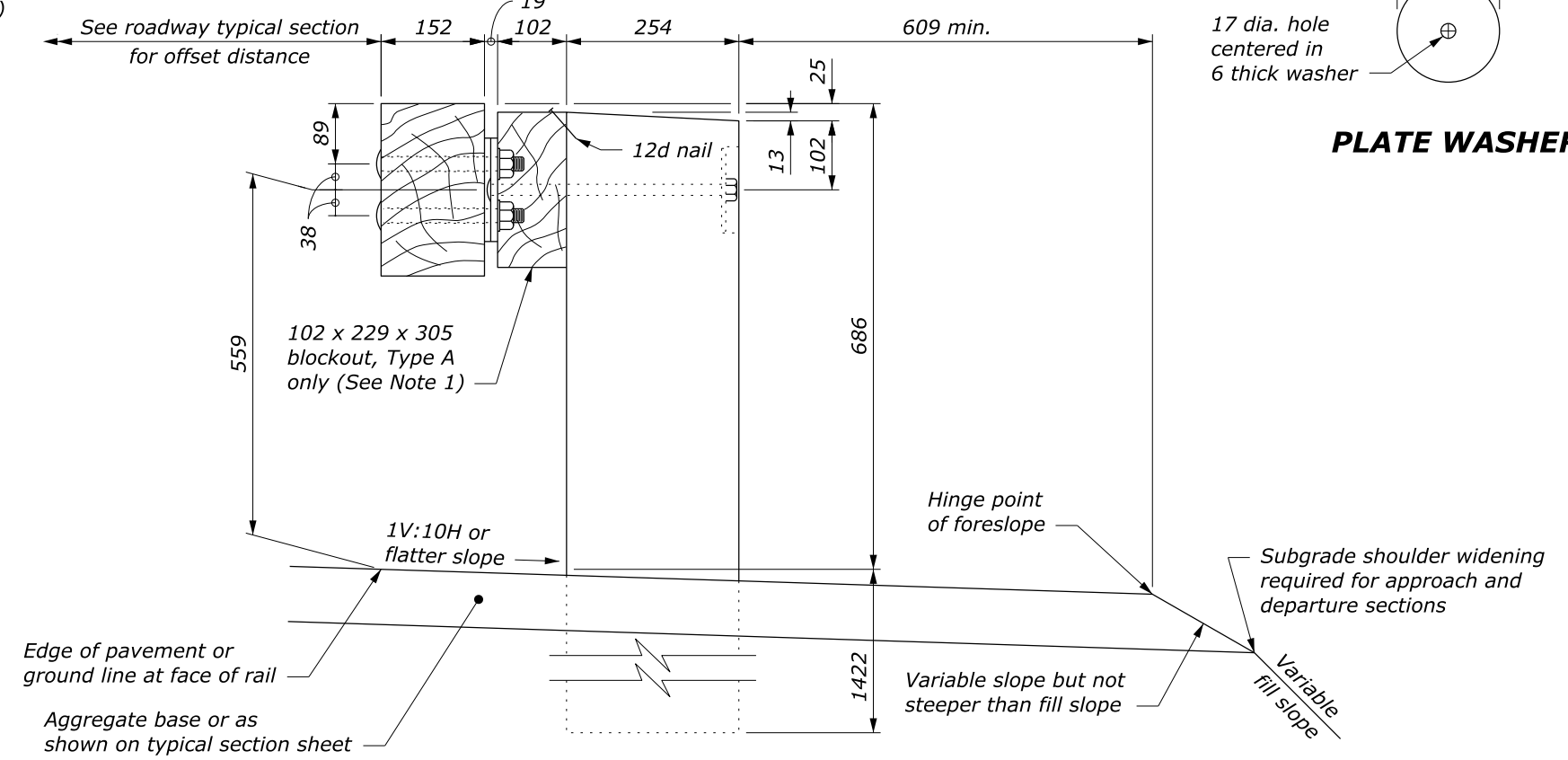
PLAN



**STEEL SPLICE PLATE**

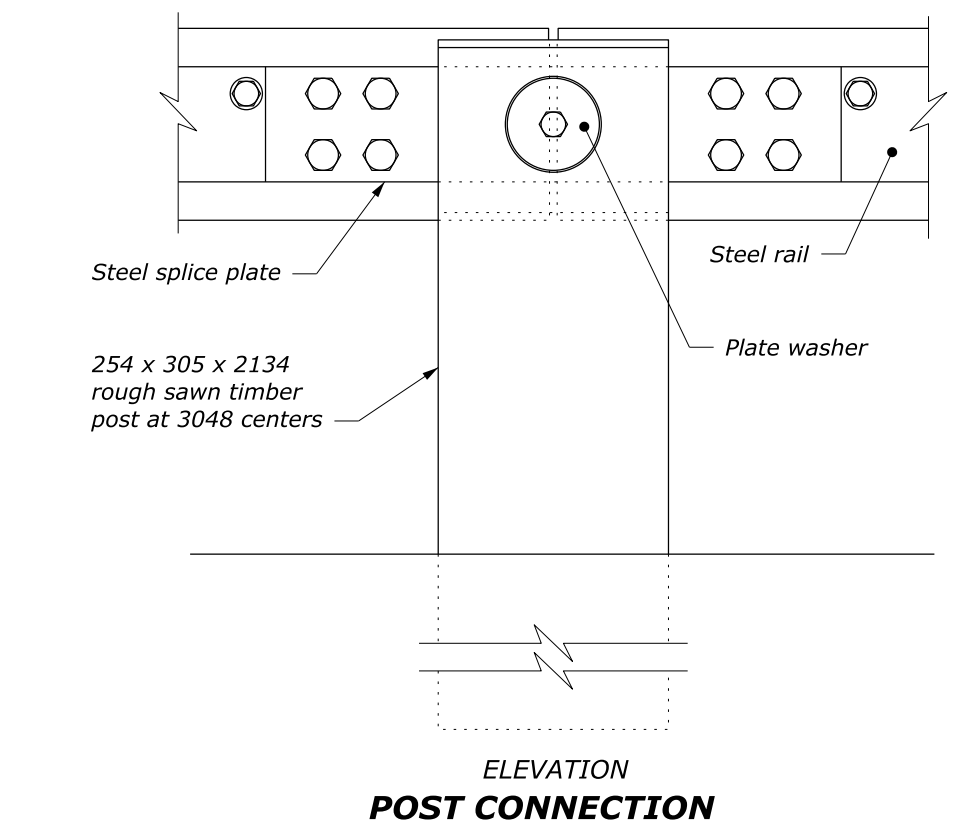


**PLATE WASHER**



**TYPICAL GUARDRAIL CROSS SECTION**

This drawing contains **Metric** units of measure. Dimensions without units are millimeters.



ELEVATION  
**POST CONNECTION**

NO SCALE

U.S. DEPARTMENT OF TRANSPORTATION, FHWA OFFICE OF FEDERAL LANDS HIGHWAY	FLH STANDARD M617-60
<b>STEEL-BACKED TIMBER GUARDRAIL</b> <b>TYPE A &amp; TYPE B</b>	SPECIFICATION FP-14, FP-24
	APPROVED FOR USE 2/2024

c:\pwwork\0419223\Std617-60.dgn [Std M617-60] 24 June 2024 7:12 AM