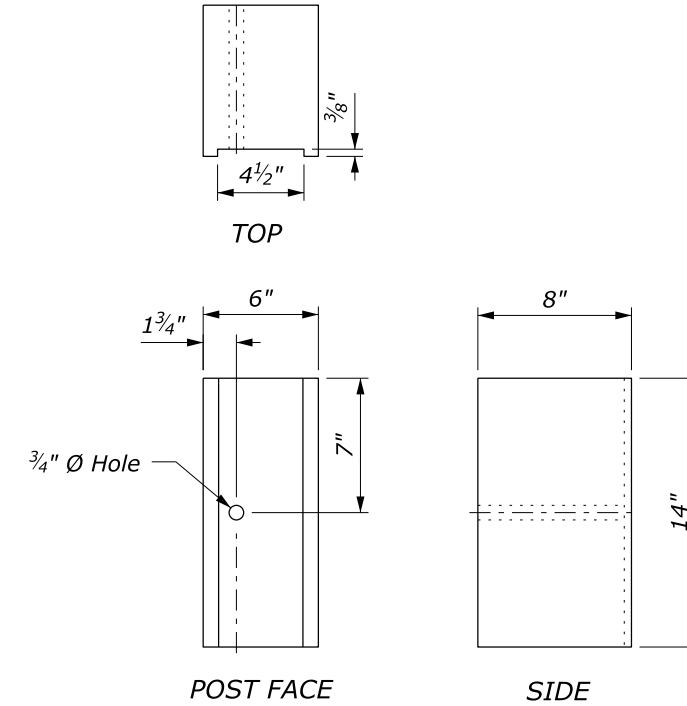
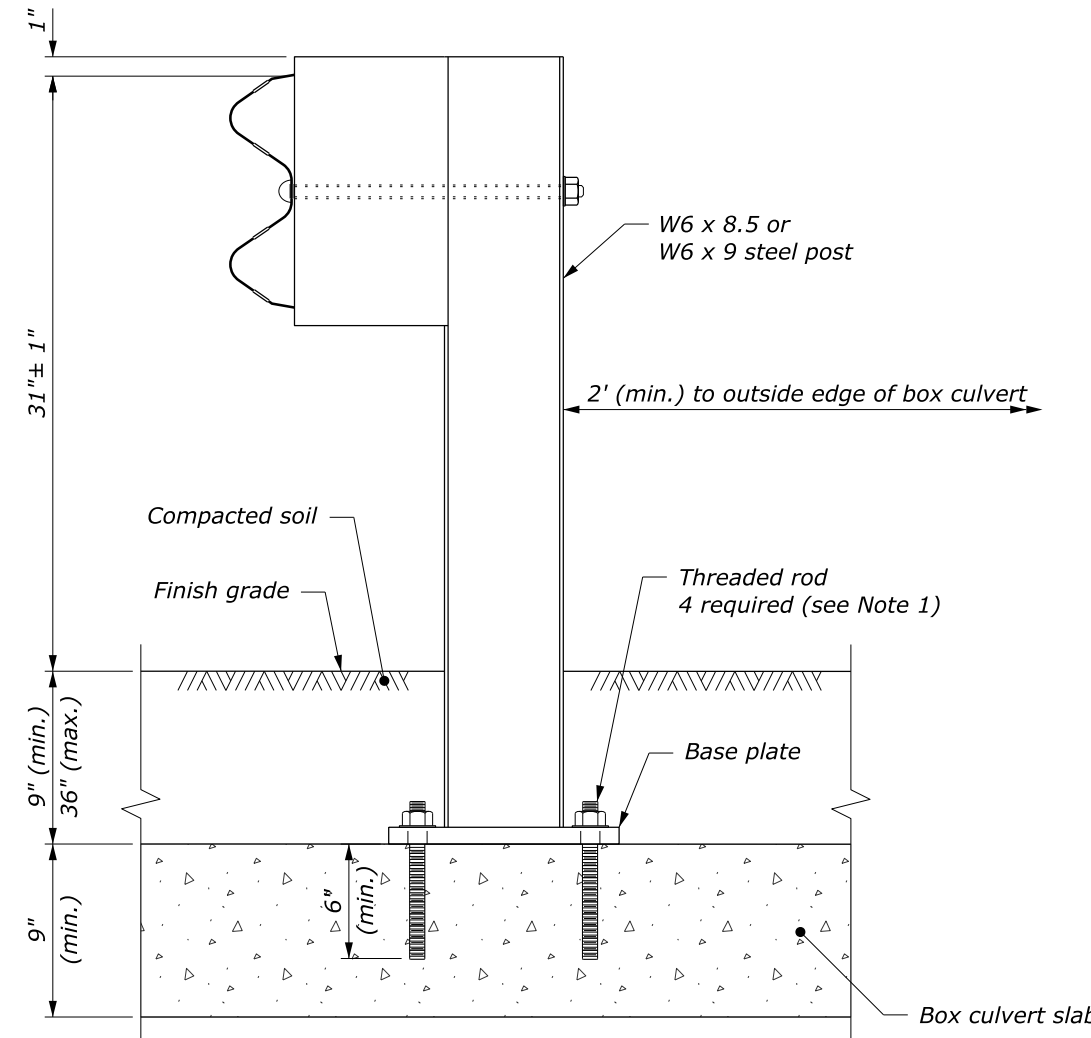
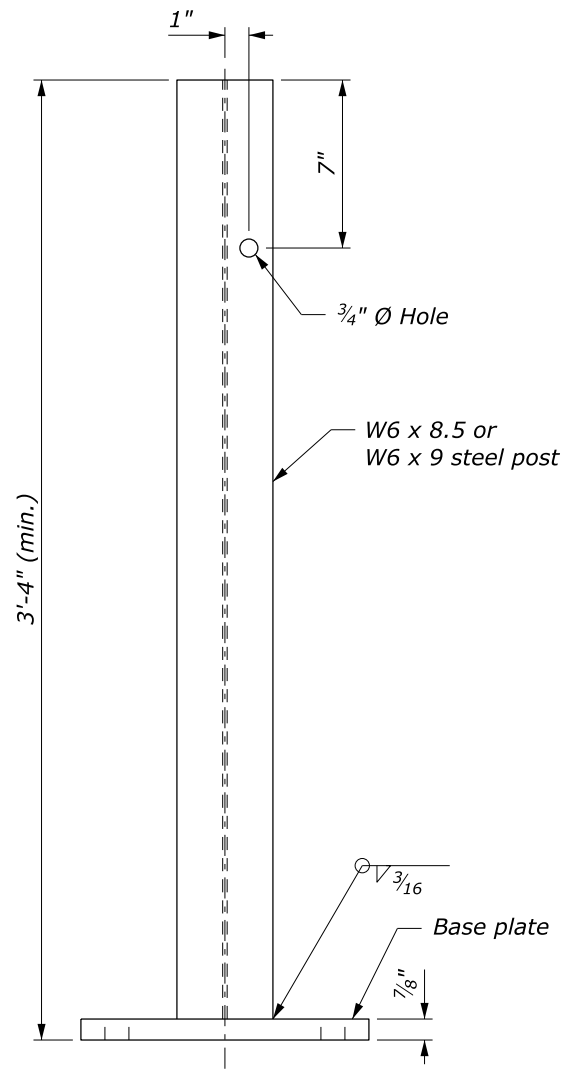


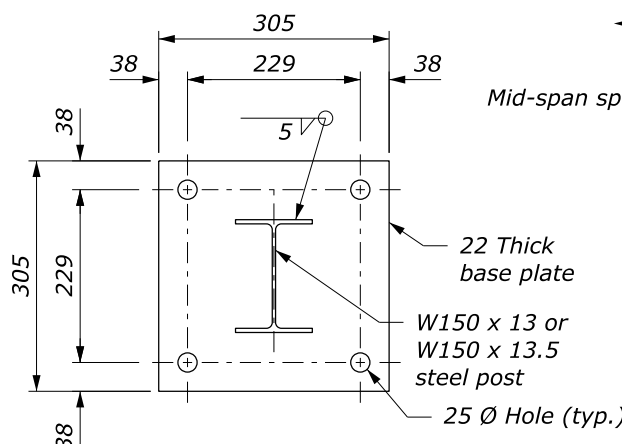
NOTE:

1. Attach guardrail post to box culvert with $\frac{7}{8}$ inch diameter high-strength threaded rods $8\frac{1}{2}$ inch in length with resin-bonded anchors. Use carbon steel rods with a minimum strength of 125 ksi and a minimum yield strength of 105 ksi. Rods, nuts, and washers have an electroplated zinc coating.
2. Wood blocks are shown. Blocks of an approved alternative may be used.
3. See Standard 617-32 for other details.

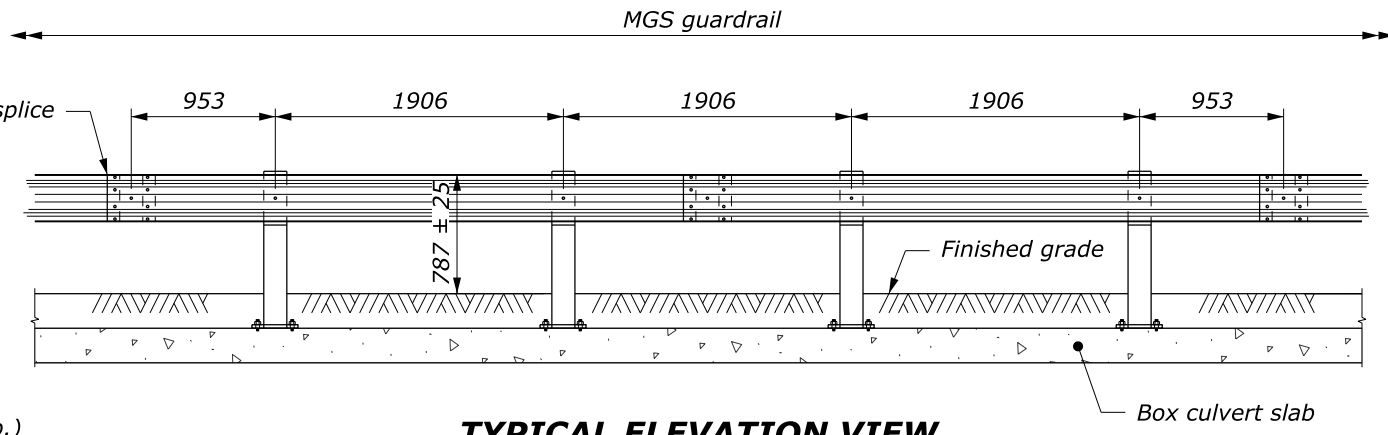


NO SCALE

U.S. DEPARTMENT OF TRANSPORTATION, FHWA OFFICE OF FEDERAL LANDS HIGHWAY	FLH STANDARD 617-38
MGS W-BEAM GUARDRAIL STEEL POSTS ATTACHED TO BOX CULVERT	SPECIFICATION FP-14
	APPROVED FOR USE 1/2024



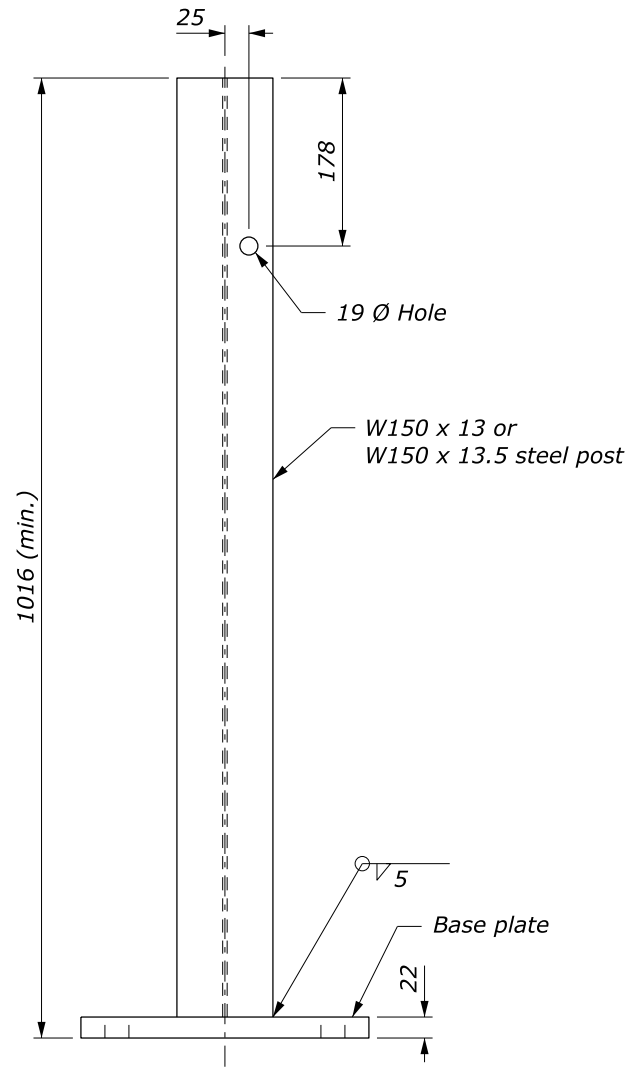
PLAN



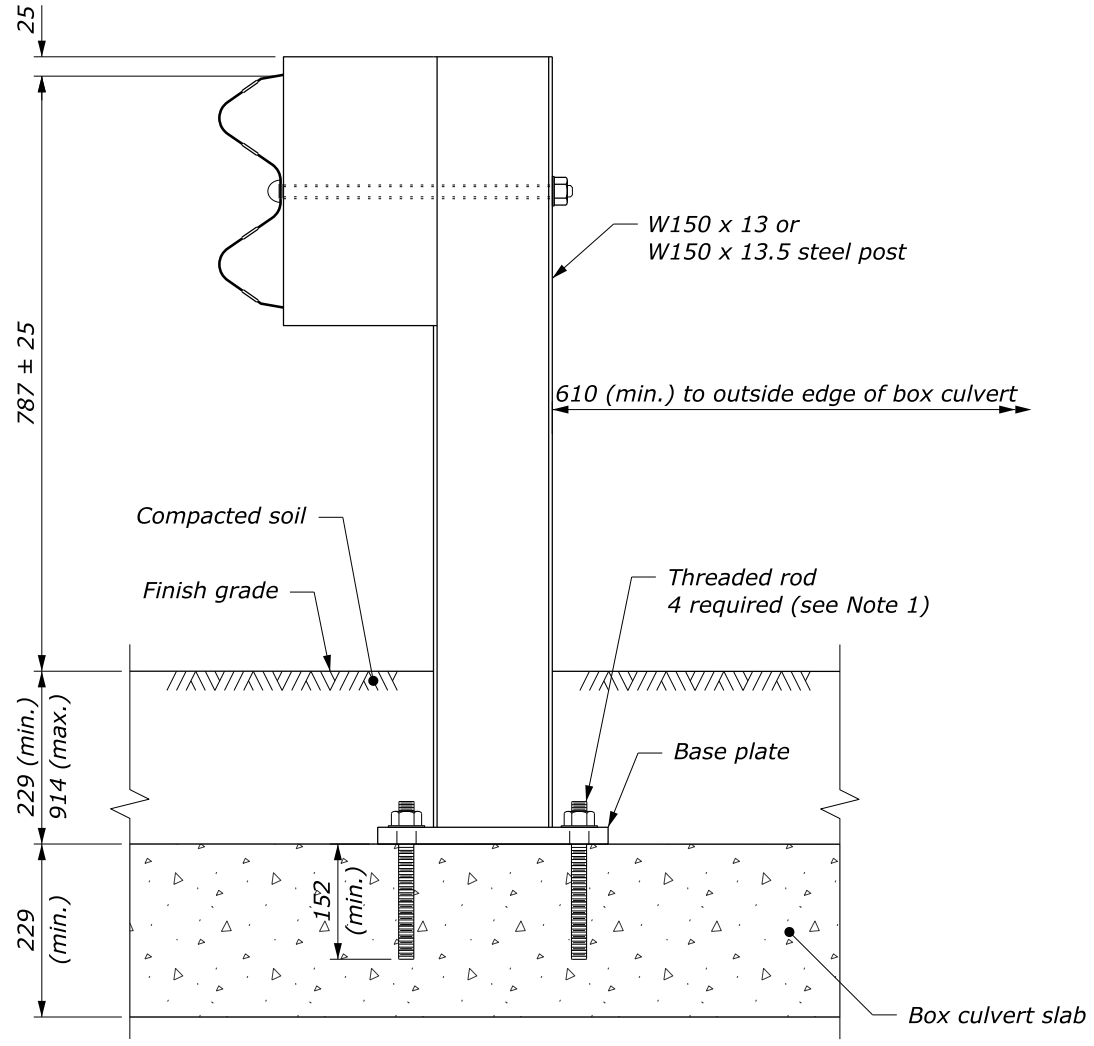
TYPICAL ELEVATION VIEW

NOTE:

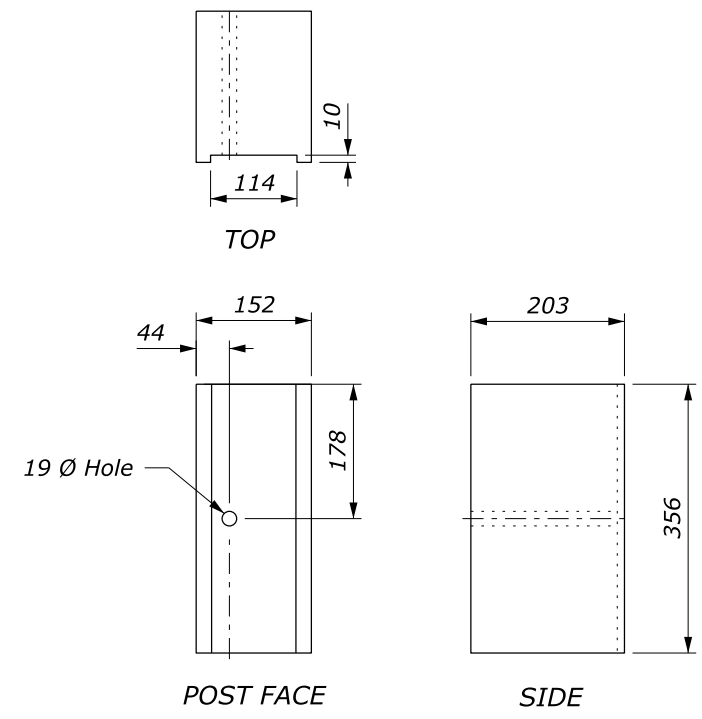
1. Attach guardrail post to box culvert with 22 mm diameter high-strength threaded rods 216 mm in length with resin-bonded anchors. Use carbon steel rods with a minimum strength of 862 MPa and a minimum yield strength of 724 MPa. Rods, nuts, and washers have an electroplated zinc coating.
2. Wood blocks are shown. Blocks of an approved alternative may be used.
3. See Standard M617-32 for other details.



ELEVATION
BOX CULVERT POST



BOX CULVERT MGS GUARDRAIL
STEEL POST



BLOCK
See Note 2

This drawing contains **Metric** units of measure.
Dimensions without units are millimeters.

U.S. DEPARTMENT OF TRANSPORTATION, FHWA OFFICE OF FEDERAL LANDS HIGHWAY	FLH STANDARD M617-38
MGS W-BEAM GUARDRAIL STEEL POSTS ATTACHED TO BOX CULVERT	SPECIFICATION FP-14
	APPROVED FOR USE 1/2024

NO SCALE

c:\pwwork\0419223\Std617-38fp14.dgn [Std M617-38] 9 JULY 2024 4:01 PM