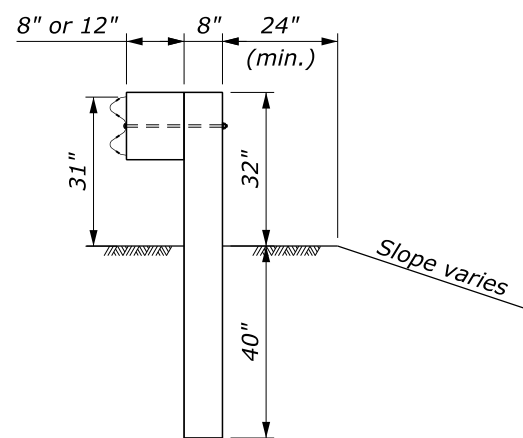
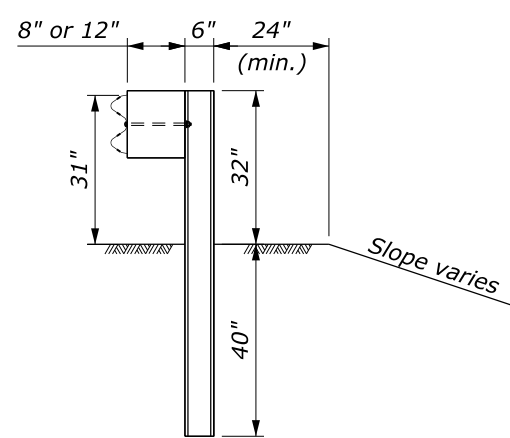


NOTE:

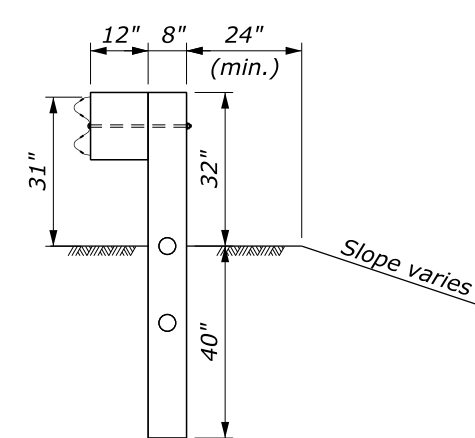
1. Posts ① and ⑧ may be wood or steel.
2. Use wood posts for CRT posts.
3. The minimum length of guardrail, including the end terminals, upstream and downstream of posts ② and ⑦ is 62.5 feet.
4. In locations where the culvert headwall extends above the finished grade to act as a vertical roadway curb, the maximum height of the culvert headwall above the finished grade is 2 inches.
5. See Standard 617-31 or 617-32 for other assembly details.



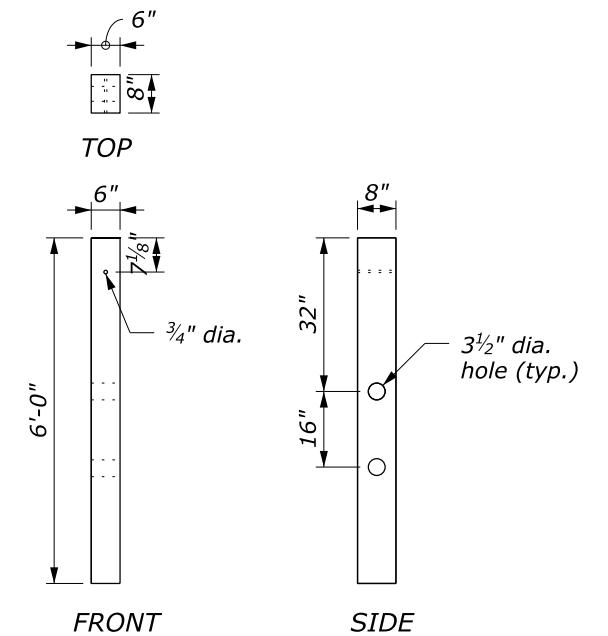
WOOD POST DETAIL
POST ① AND ⑧
See Note 1



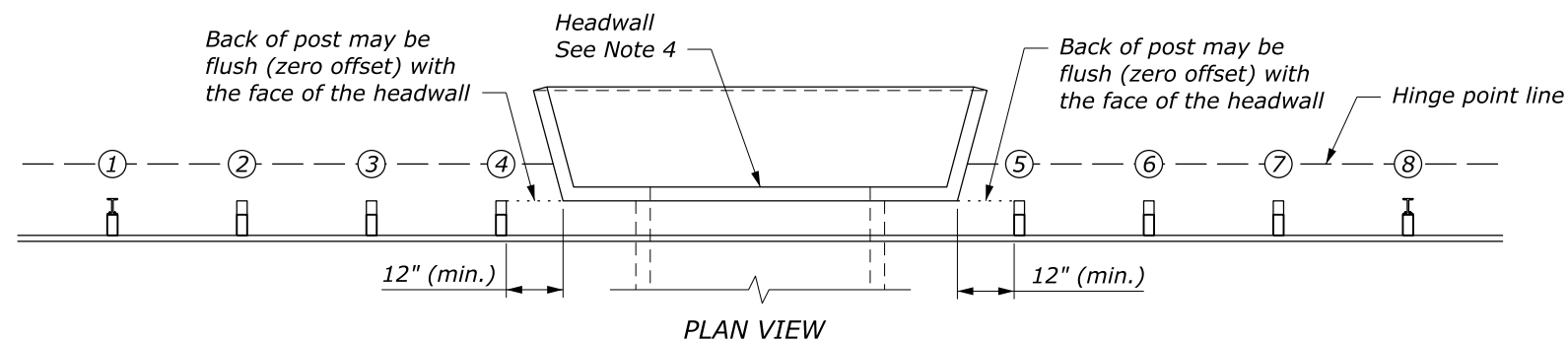
STEEL POST DETAIL
POST ① AND ⑧
See Note 1



CRT POST DETAIL
POST ② THRU ⑦
See Note 2



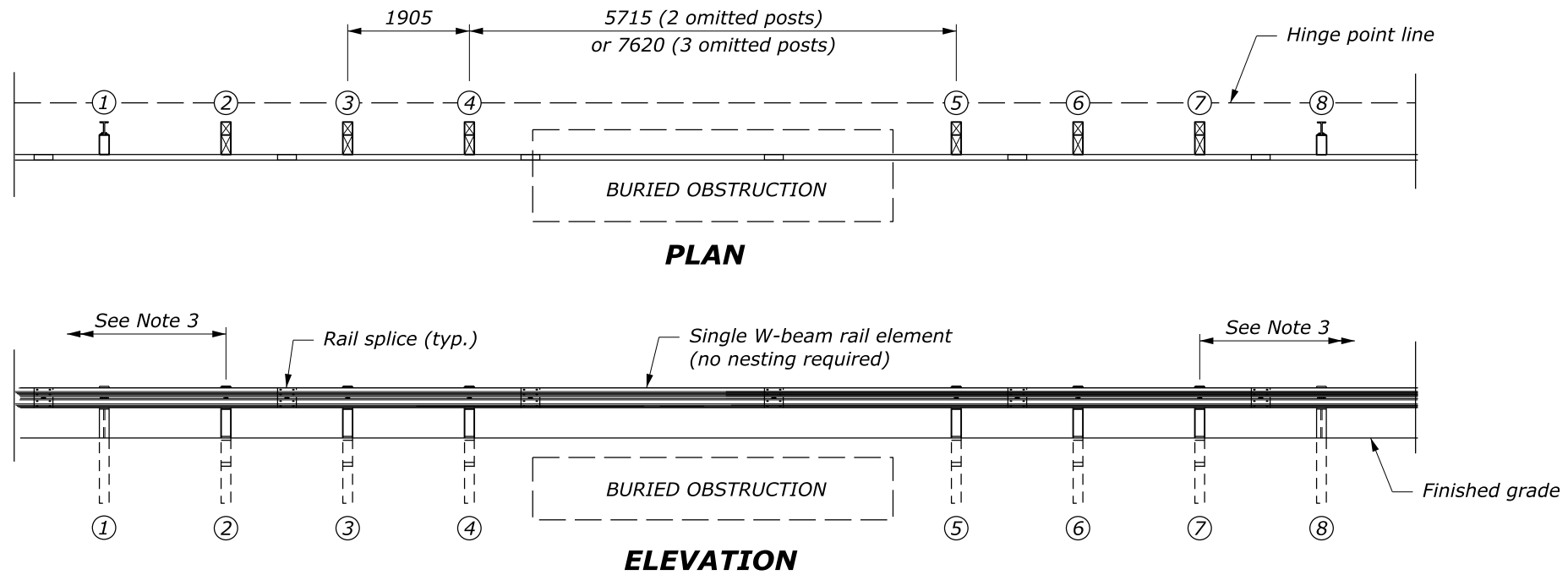
CRT WOOD POST



SPAN WITH HEADWALL DETAIL

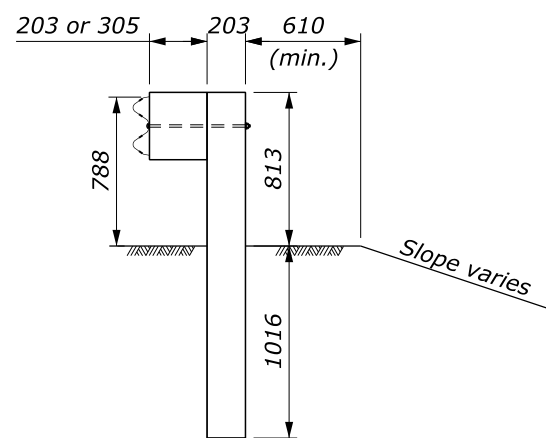
NO SCALE

U.S. DEPARTMENT OF TRANSPORTATION, FHWA OFFICE OF FEDERAL LANDS HIGHWAY	FLH STANDARD 617-37
MGS W-BEAM GUARDRAIL LONG-SPAN SYSTEM	SPECIFICATION FP-24, FP-14
	APPROVED FOR USE 1/2024



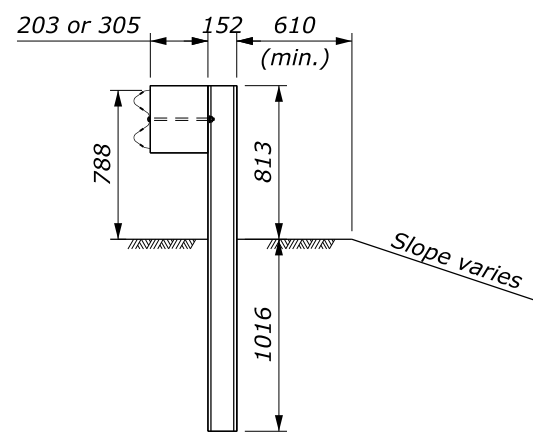
NOTE:

- Posts ① and ⑧ may be wood or steel.
- Use wood posts for CRT posts.
- The minimum length of guardrail, including the end terminals, upstream and downstream of posts ② and ⑦ is 19.05 m.
- In locations where the culvert headwall extends above the finished grade to act as a vertical roadway curb, the maximum height of the culvert headwall above the finished grade is 50 mm.
- See Standard M617-31 or M617-32 for other assembly details.



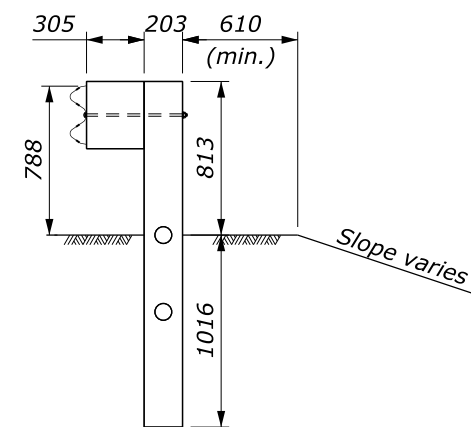
WOOD POST DETAIL

POST ① AND ⑧
See Note 1



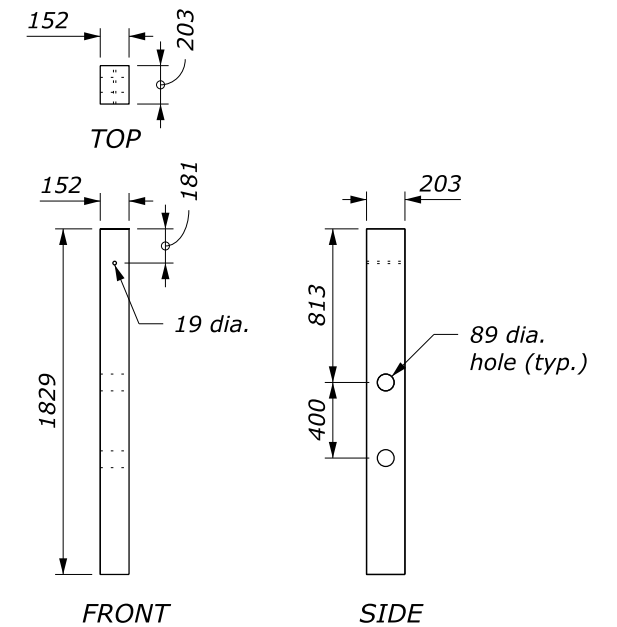
STEEL POST DETAIL

POST ① AND ⑧
See Note 1



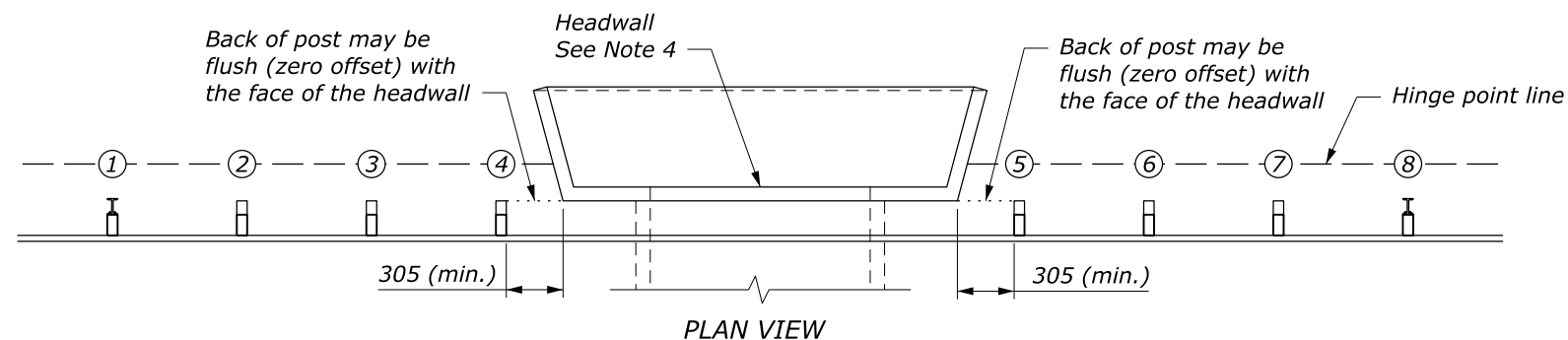
CRT POST DETAIL

POST ② THRU ⑦
See Note 2



FRONT SIDE

CRT WOOD POST



SPAN WITH HEADWALL DETAIL

This drawing contains **Metric** units of measure.
Dimensions without units are millimeters.

U.S. DEPARTMENT OF TRANSPORTATION, FHWA OFFICE OF FEDERAL LANDS HIGHWAY	FLH STANDARD M617-37
MGS W-BEAM GUARDRAIL LONG-SPAN SYSTEM	SPECIFICATION FP-24, FP-14
	APPROVED FOR USE 1/2024

NO SCALE