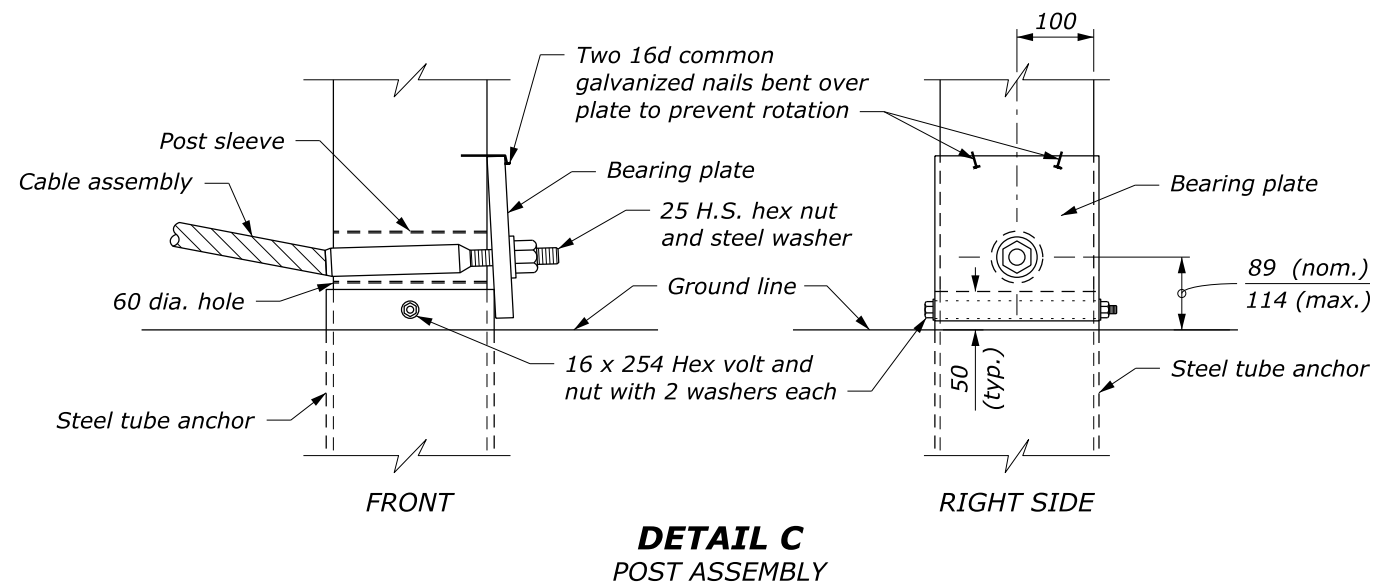
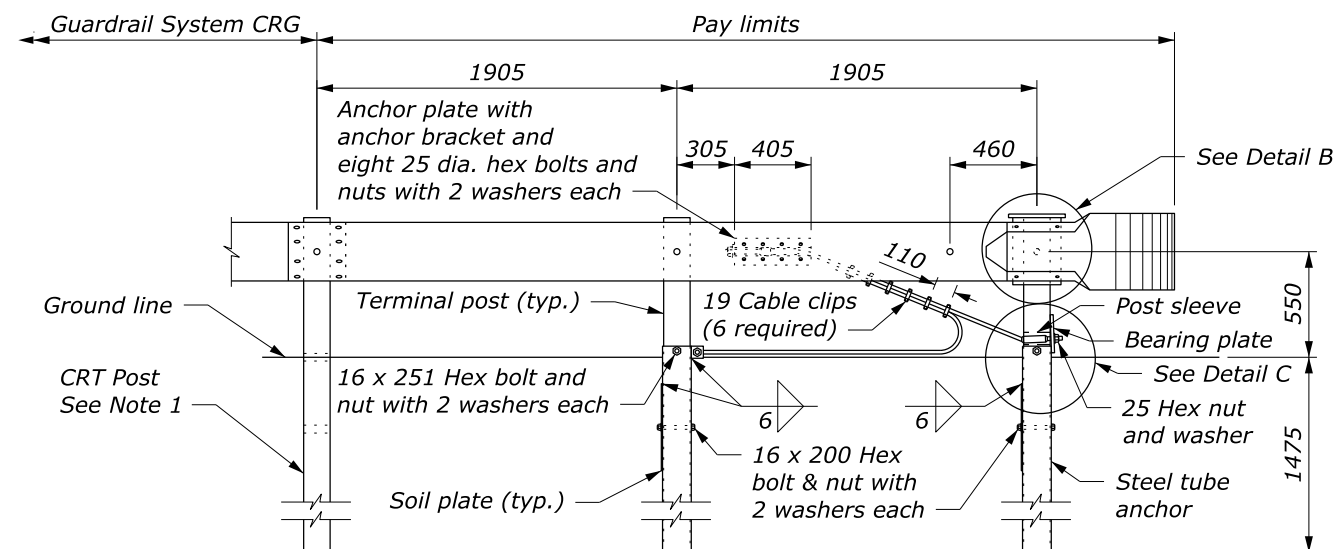
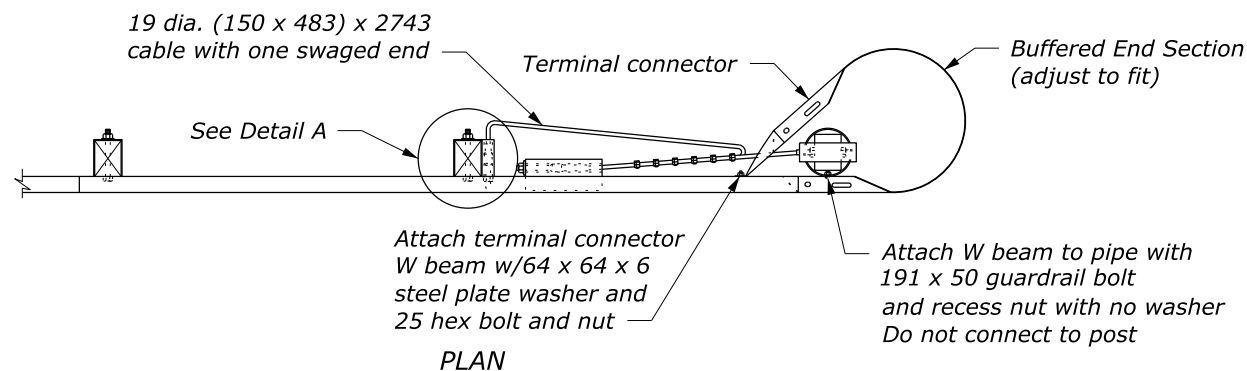
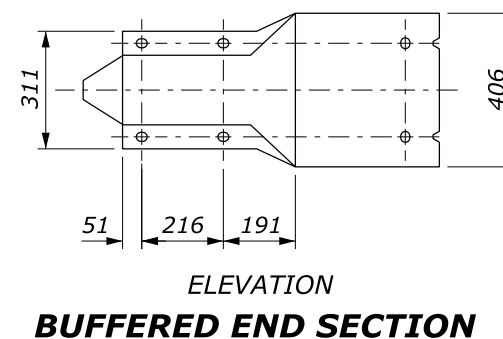
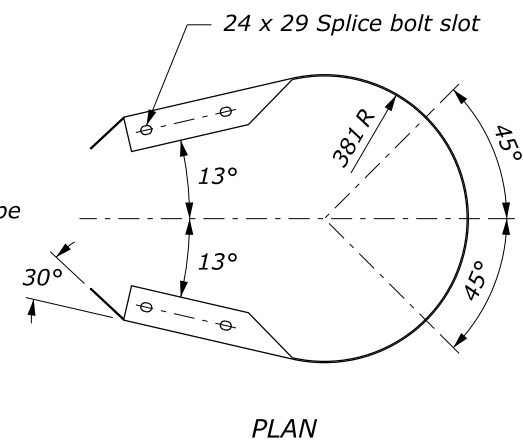
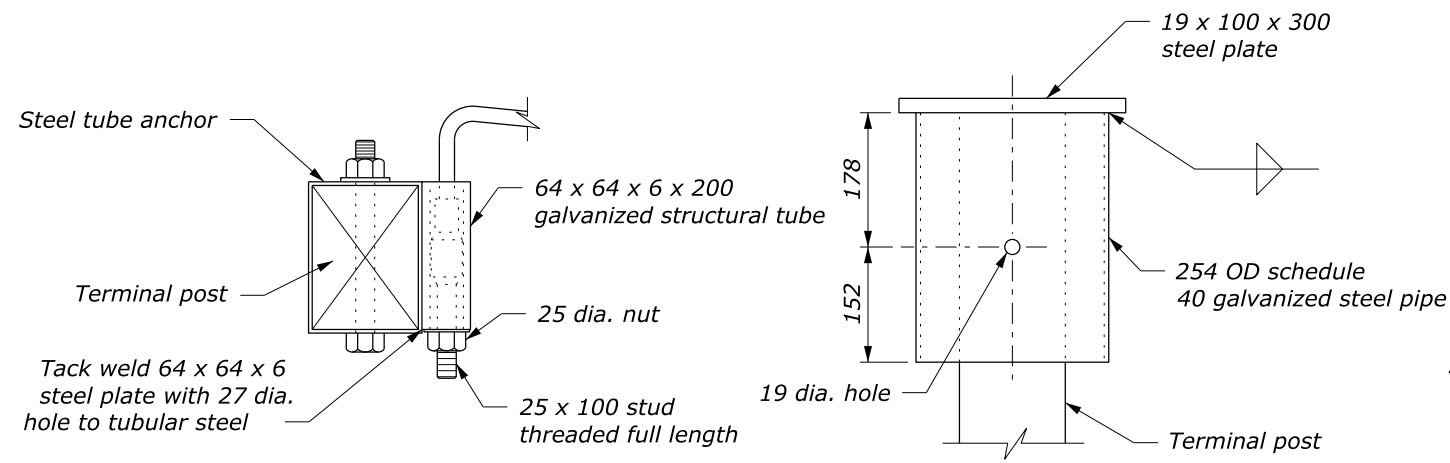


NOTE:

1. See Standard 617-21 and 617-23 for other details.
2. Dimensional tolerances not shown or implied are intended to be those consistent with the proper functioning of the part, including its appearance, and accepted manufacturing practices.

NO SCALE

U.S. DEPARTMENT OF TRANSPORTATION, FHWA OFFICE OF FEDERAL LANDS HIGHWAY	FLH STANDARD 617-22
G4 W-BEAM GUARDRAIL CABLE RELEASING TERMINAL TYPE G4-CRT	SPECIFICATION FP-24, FP-14 APPROVED FOR USE 1/2024



- NOTE:**
- See Standard M617-21 and M617-23 for details.
 - Dimensional tolerances not shown or implied are intended to be those consistent with the proper functioning of the part, including its appearance, and accepted manufacturing practices.

This drawing contains **Metric** units of measure. Dimensions without units are millimeters.

U.S. DEPARTMENT OF TRANSPORTATION, FHWA OFFICE OF FEDERAL LANDS HIGHWAY	FLH STANDARD M617-22
G4 W-BEAM GUARDRAIL CABLE RELEASING TERMINAL TYPE G4-CRT	SPECIFICATION FP-24, FP-14
	APPROVED FOR USE 1/2024

NO SCALE