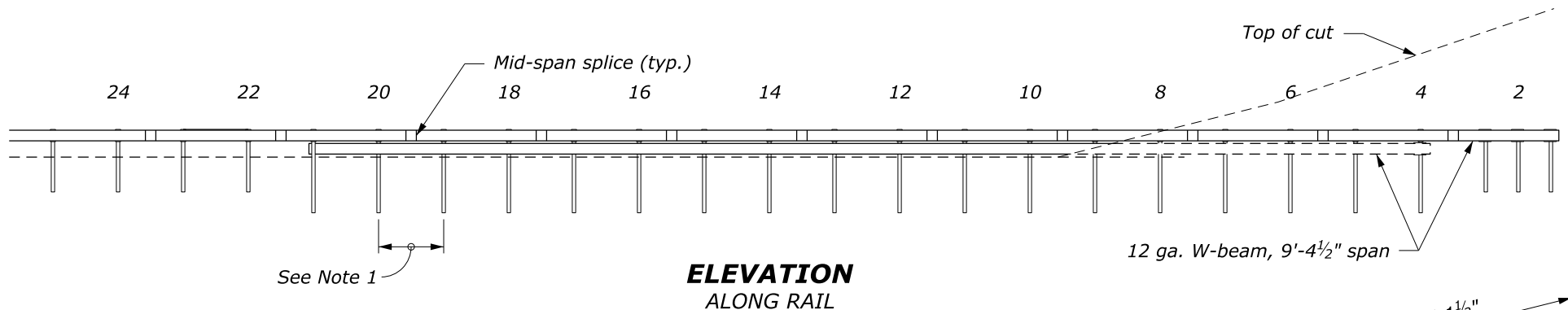
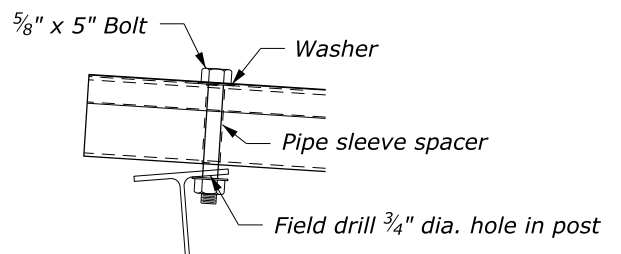


PLAN

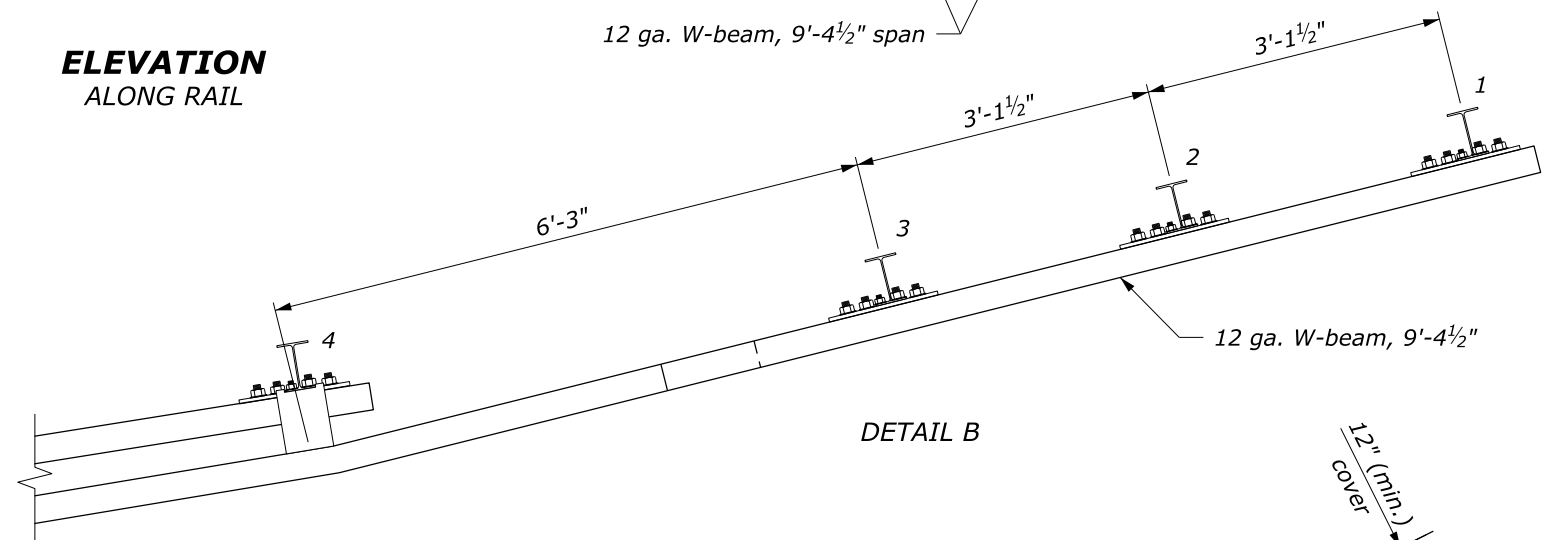
POST OFFSETS FROM EDGE OF SHOULDER	
POST	DISTANCE
1	13'-11 ³ / ₄ "
4	10'-11"
6	8'-10 ¹ / ₄ "
10	5'-9"



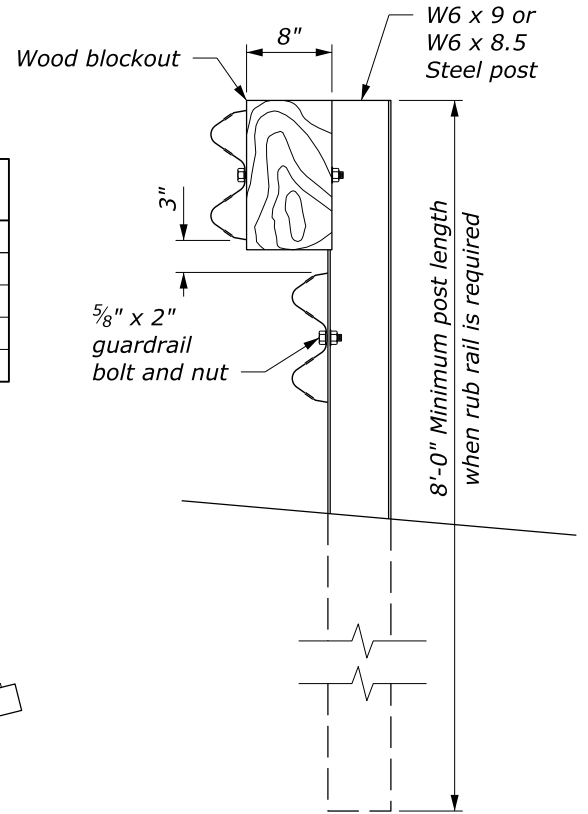
ELEVATION ALONG RAIL



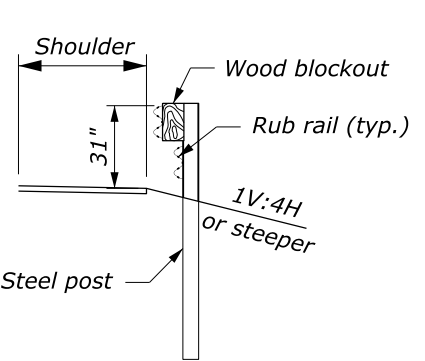
DETAIL A



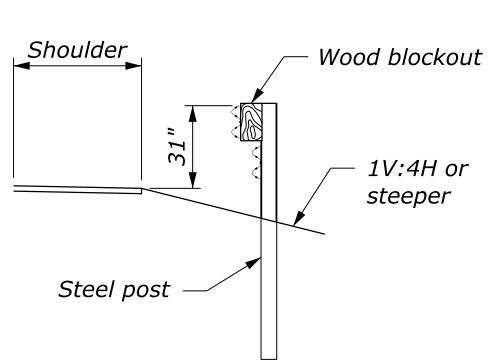
DETAIL B



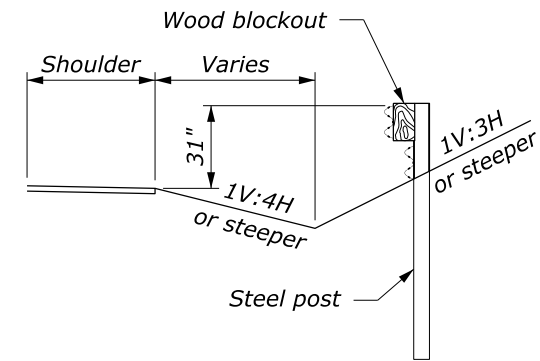
ELEVATION STEEL POST AND BLOCKOUT DETAIL



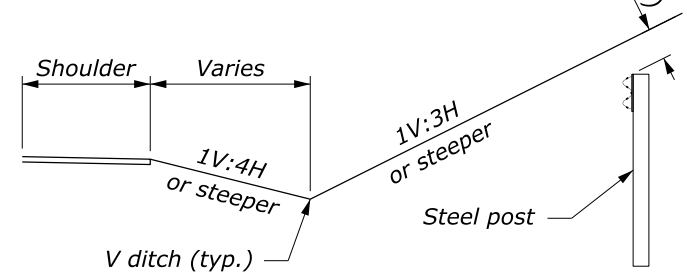
SECTION A-A



SECTION B-B



SECTION C-C



SECTION D-D

NO SCALE

NOTE:

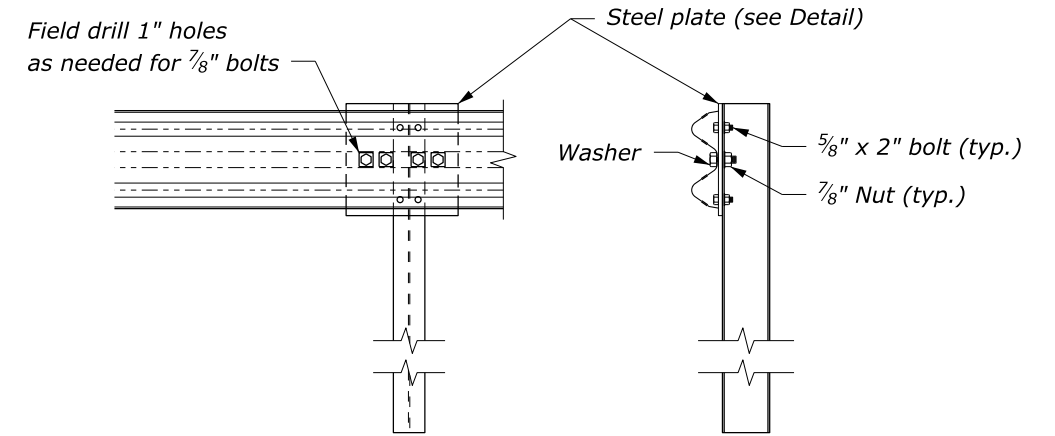
1. Typical post spacing is 6'-3" unless otherwise noted.
2. See Standard 617-31 (wood posts) and 617-32 (steel posts) for other details.

U.S. DEPARTMENT OF TRANSPORTATION, FHWA OFFICE OF FEDERAL LANDS HIGHWAY	FLH STANDARD 617-18
MGS W-BEAM GUARDRAIL BACK SLOPE ANCHOR TERMINAL TYPE MGS-BAT	SPECIFICATION FP-24
Sheet 1 of 2	APPROVED FOR USE 2/2024

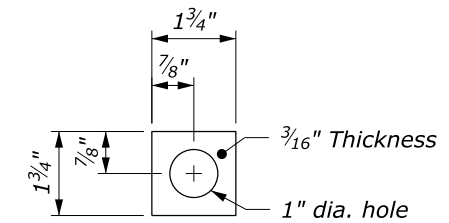
c:\pwwork\0419223\Std617-18.dgn [Std 617-18a] 11 July 2024 12:39 PM

NOTE:

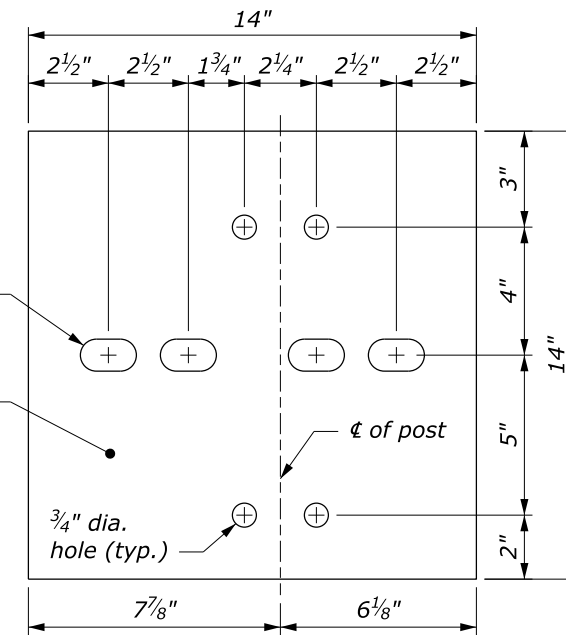
1. See Sheet 1 of 2 for terminal layout.
2. Use zinc rich paint to coat field drilled holes.
3. Anchor plate and hardware are typical on top rail of Posts 1 -3 and rub rail at Post 4.



SPECIAL RAIL TO POST CONNECTION AT POSTS 1, 2, AND 3



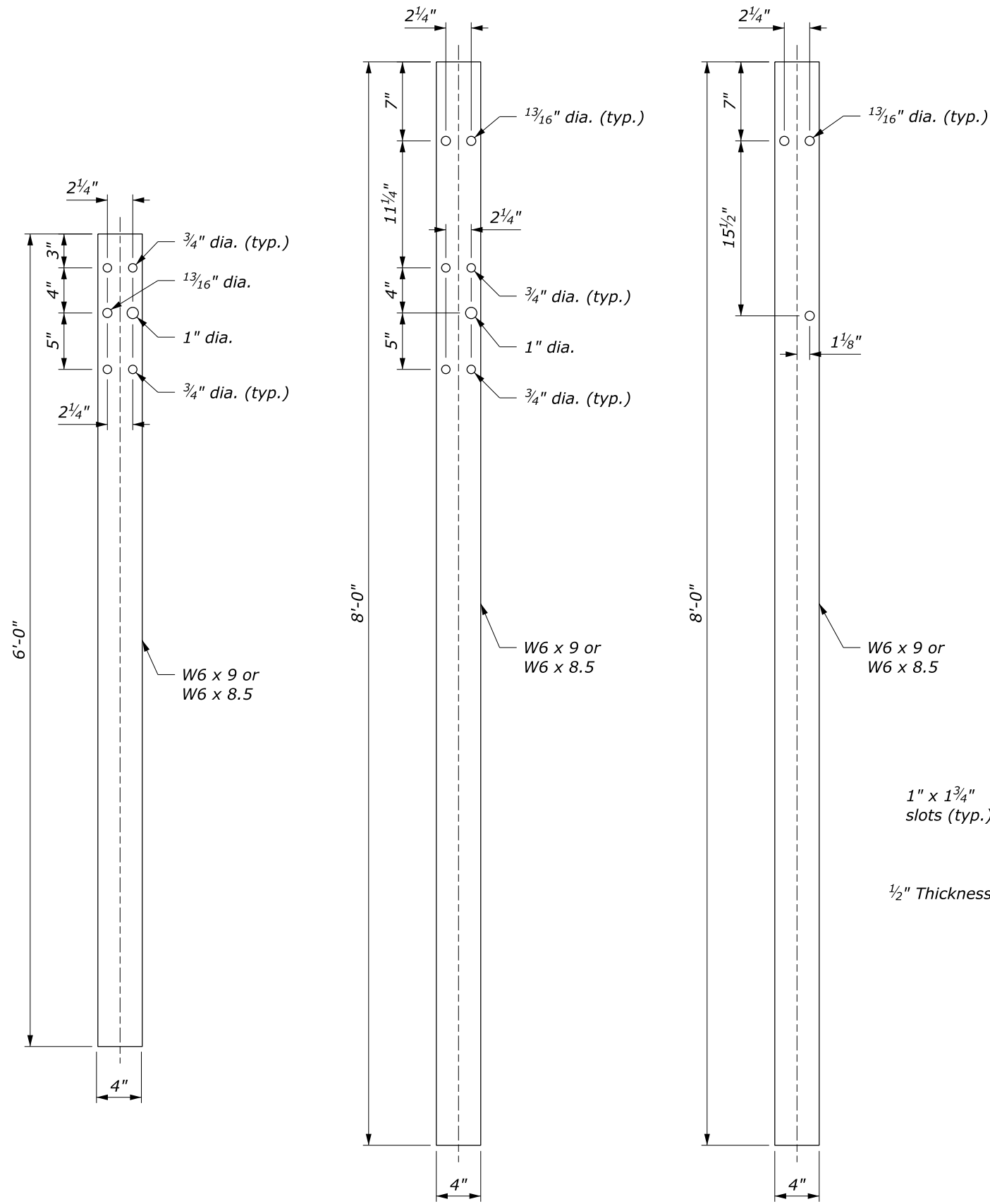
GALVANIZED SQUARE WASHER



GALVANIZED STEEL PLATE

STEEL PLATE AND WASHER
See Note 3

NO SCALE

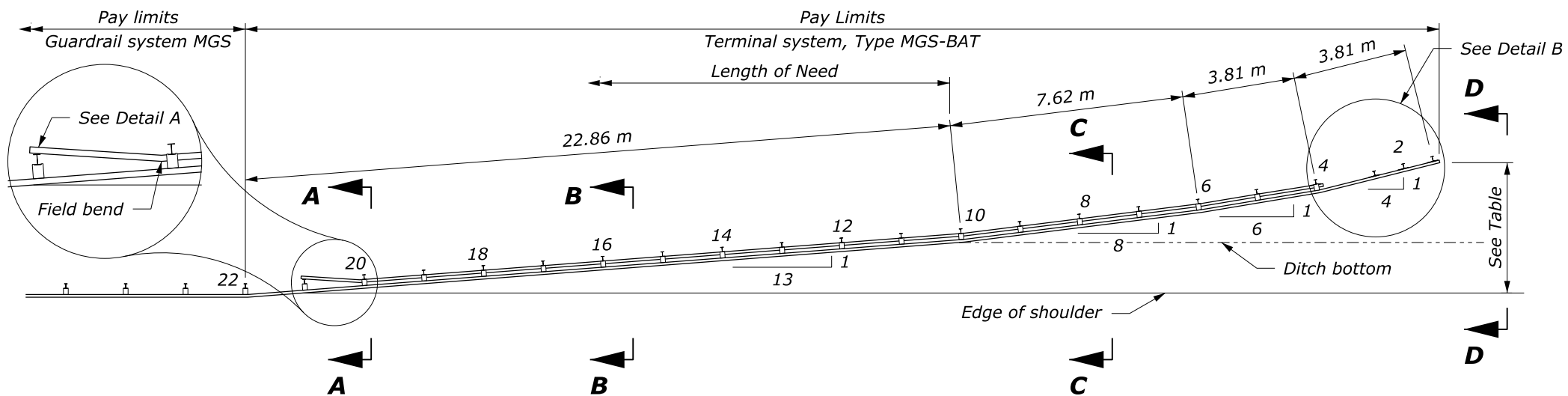


POSTS 1-3

POST 4

POSTS 5-21

U.S. DEPARTMENT OF TRANSPORTATION, FHWA OFFICE OF FEDERAL LANDS HIGHWAY		FLH STANDARD 617-18
MGS W-BEAM GUARDRAIL BACK SLOPE ANCHOR TERMINAL TYPE MGS-BAT		SPECIFICATION FP-24
Sheet 2 of 2		APPROVED FOR USE 2/2024

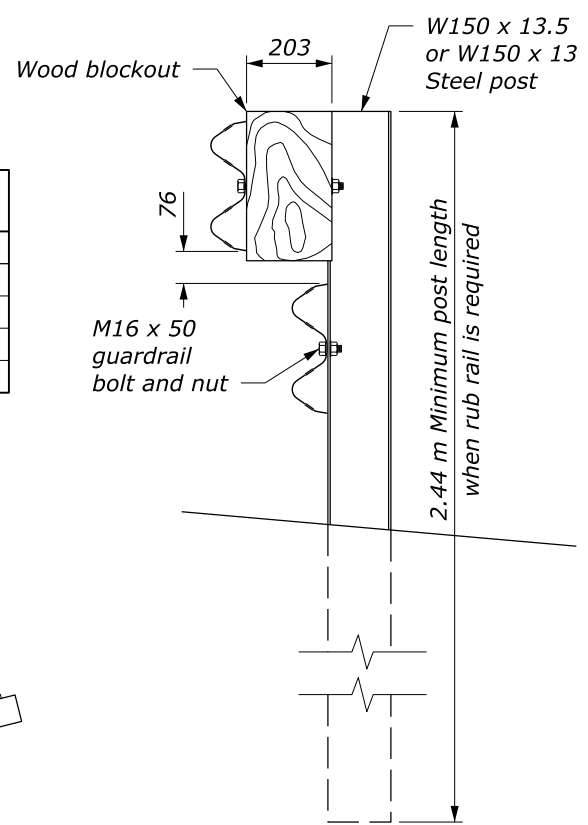


NOTE:

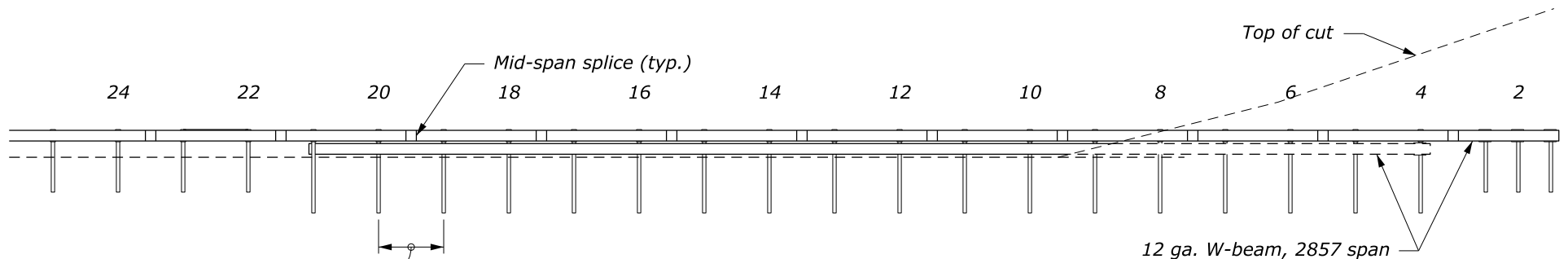
1. Typical post spacing is 1.905 m unless otherwise noted.
2. See Standard M617-31 (wood posts) and M617-32 (steel posts) for other details.

PLAN

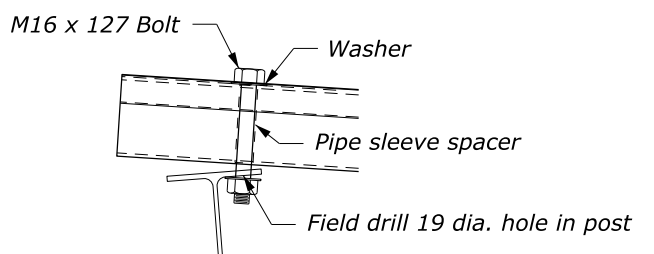
POST OFFSETS FROM EDGE OF SHOULDER	
POST	DISTANCE
1	4.26 m
4	3.33 m
6	2.70 m
10	1.56 m



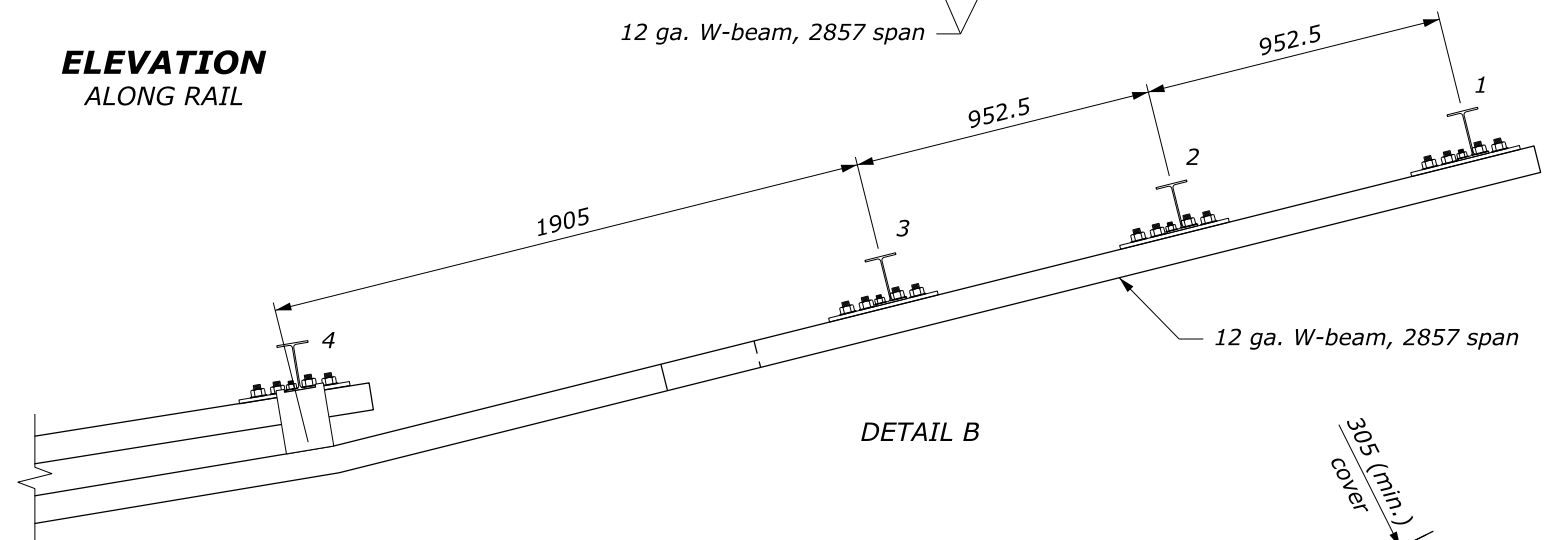
ELEVATION STEEL POST AND BLOCKOUT DETAIL



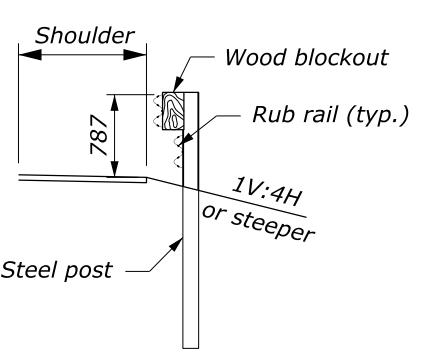
ELEVATION ALONG RAIL



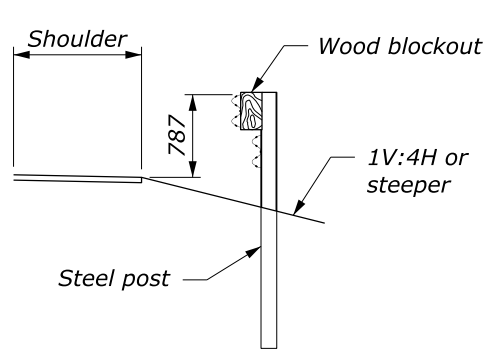
DETAIL A



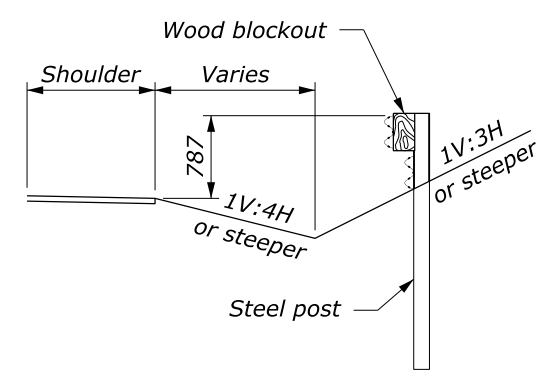
DETAIL B



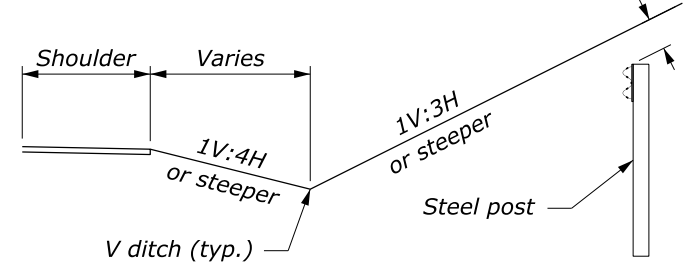
SECTION A-A



SECTION B-B



SECTION C-C



SECTION D-D

NO SCALE

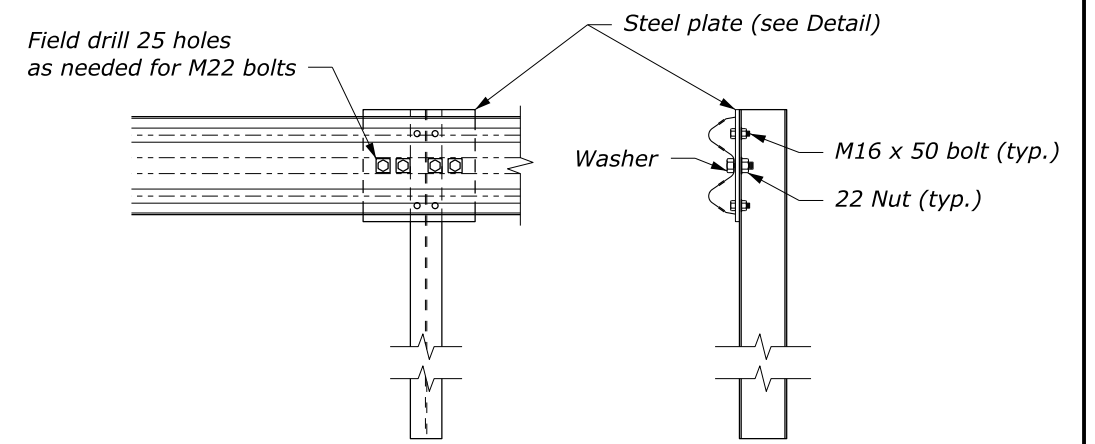
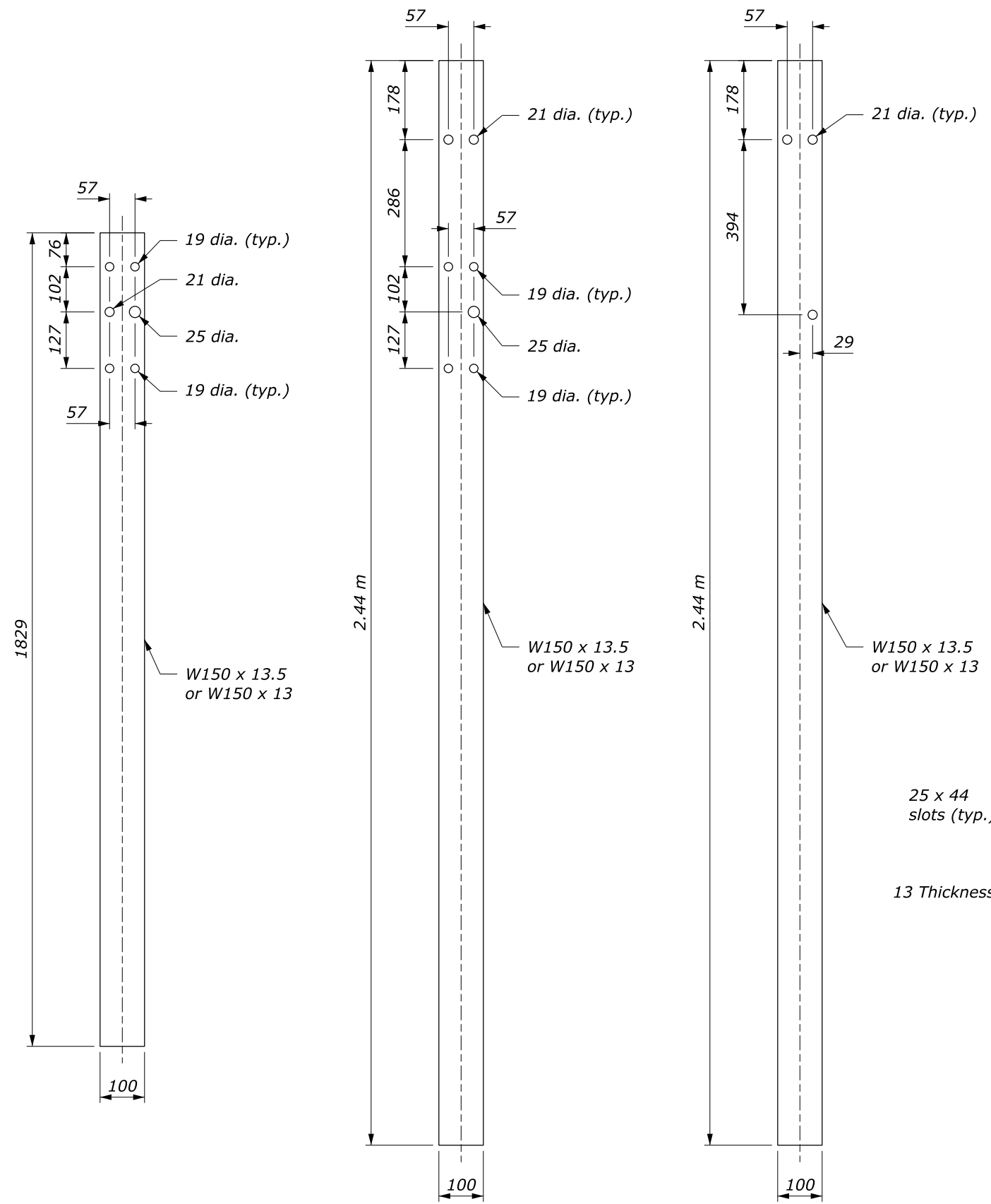
This drawing contains **Metric** units of measure. Dimensions without units are millimeters.

U.S. DEPARTMENT OF TRANSPORTATION, FHWA OFFICE OF FEDERAL LANDS HIGHWAY	FLH STANDARD M617-18
MGS W-BEAM GUARDRAIL BACK SLOPE ANCHOR TERMINAL TYPE MGS-BAT	SPECIFICATION FP-24
Sheet 1 of 2	APPROVED FOR USE 2/2024

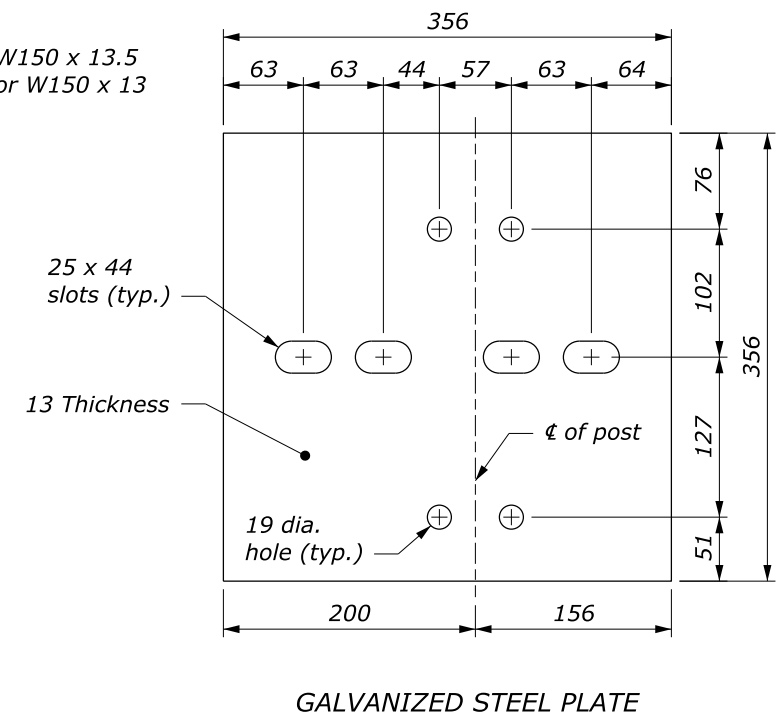
c:\pwwork\0419223\Std617-18.dgn [Std M617-18a] 11 July 2024 12:34 PM

NOTE:

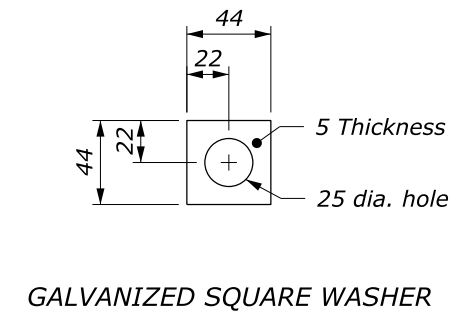
1. See Sheet 1 of 2 for terminal layout.
2. Use zinc rich paint to coat field drilled holes.
3. Anchor plate and hardware are typical on top rail of Posts 1 -3 and rub rail at Post 4.



SPECIAL RAIL TO POST CONNECTION AT POSTS 1, 2, AND 3



STEEL PLATE AND WASHER
See Note 3



GALVANIZED SQUARE WASHER

This drawing contains **Metric** units of measure. Dimensions without units are millimeters.

U.S. DEPARTMENT OF TRANSPORTATION, FHWA OFFICE OF FEDERAL LANDS HIGHWAY	FLH STANDARD M617-18
MGS W-BEAM GUARDRAIL BACK SLOPE ANCHOR TERMINAL TYPE MGS-BAT	SPECIFICATION FP-24
Sheet 2 of 2	APPROVED FOR USE 2/2024

NO SCALE

c:\pwwork\0419223\Std617-18.dgn [Std: M617-18B] 1.1 July 2024 12:35 PM