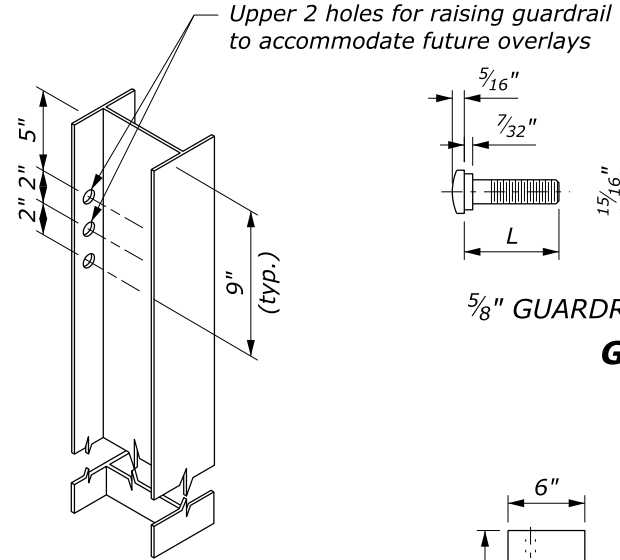
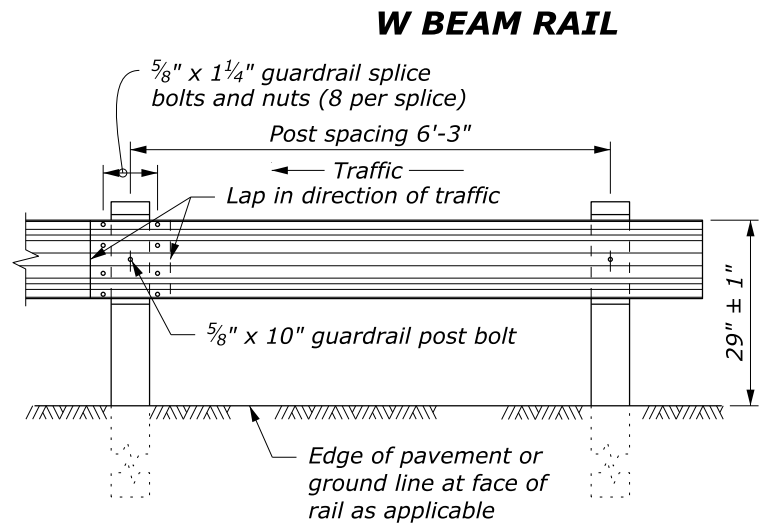
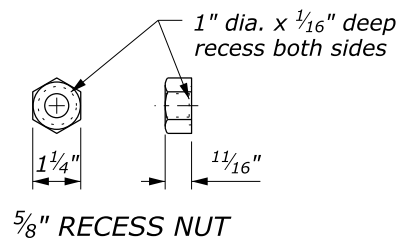


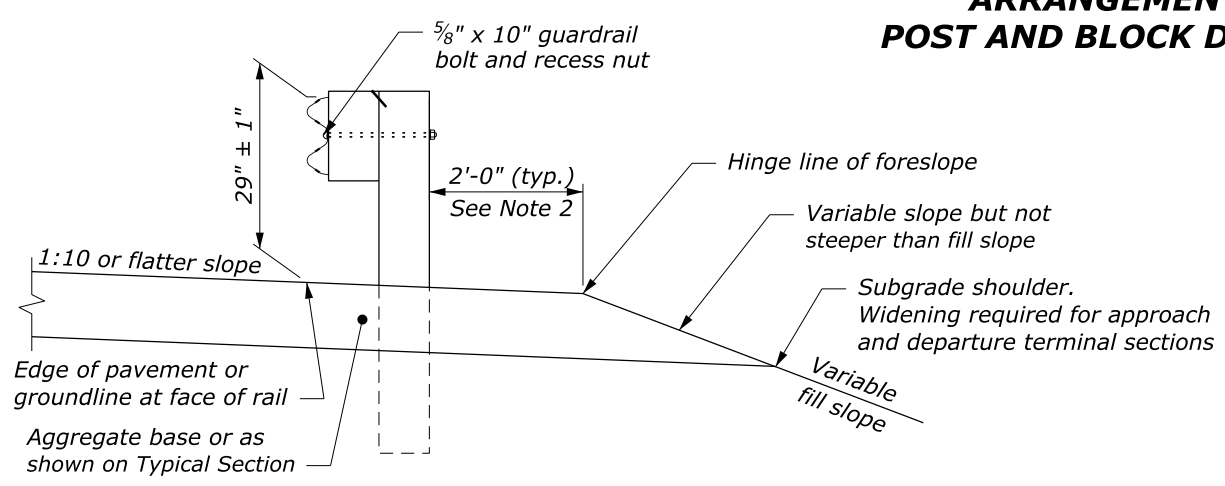
- NOTE:**
- When encountering impenetrable material, see Standard 617-13.
  - See Special Contract Requirements when 7 foot or longer posts are specified.
  - See Special Contract Requirements when the alternate hole arrangement is specified.
  - Install delineator every fourth post. Fasten delineator to post using two galvanized 2" x 3/8" bolts with a washer on both sides, a lock washer, and nut; or fasten as specified by the manufacturer. Alternate delineator types may be used if approved.
  - Block may be wood, plastic, or composite material. Use consistent material throughout the length of guardrail run.
  - Dimensional tolerances not shown or implied are intended to be those consistent with the proper functioning of the part, including its appearance, and accepted manufacturing practices.



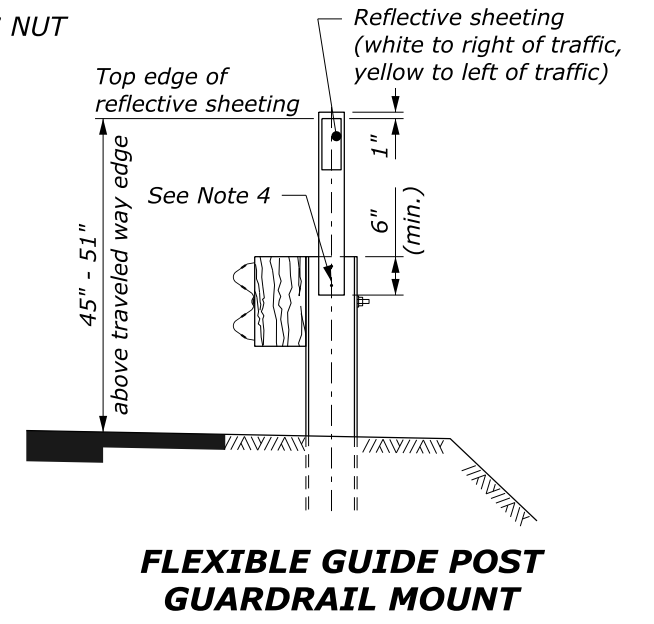
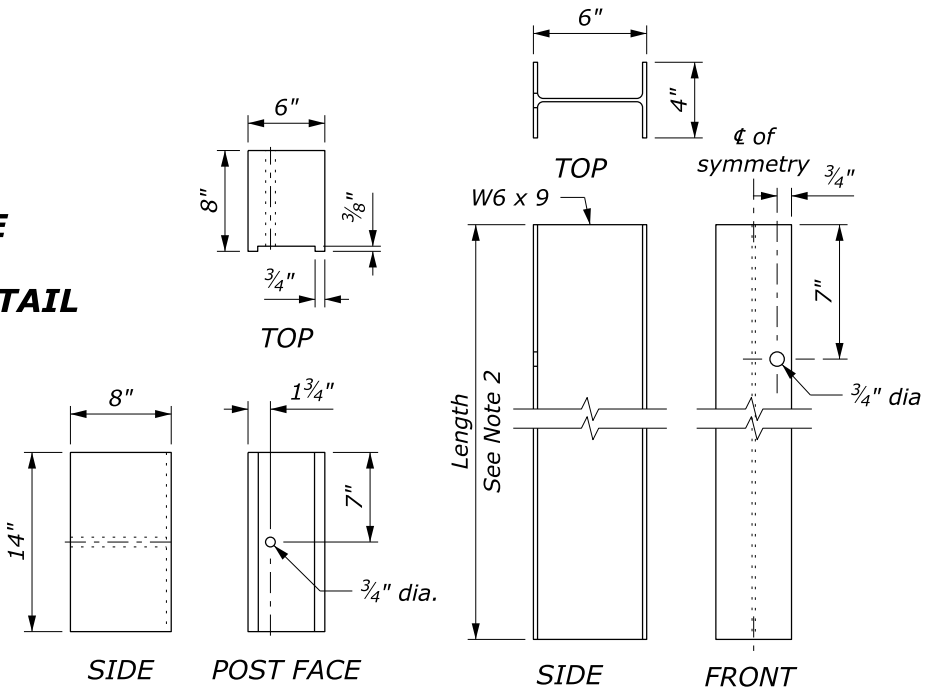
L	Thread Length
1 1/4"	1 1/8" minimum
2"	1 3/4" minimum
10"	4" minimum
18"	4" minimum
25"	4" minimum



**POST SPACING STANDARD POST SECTION**

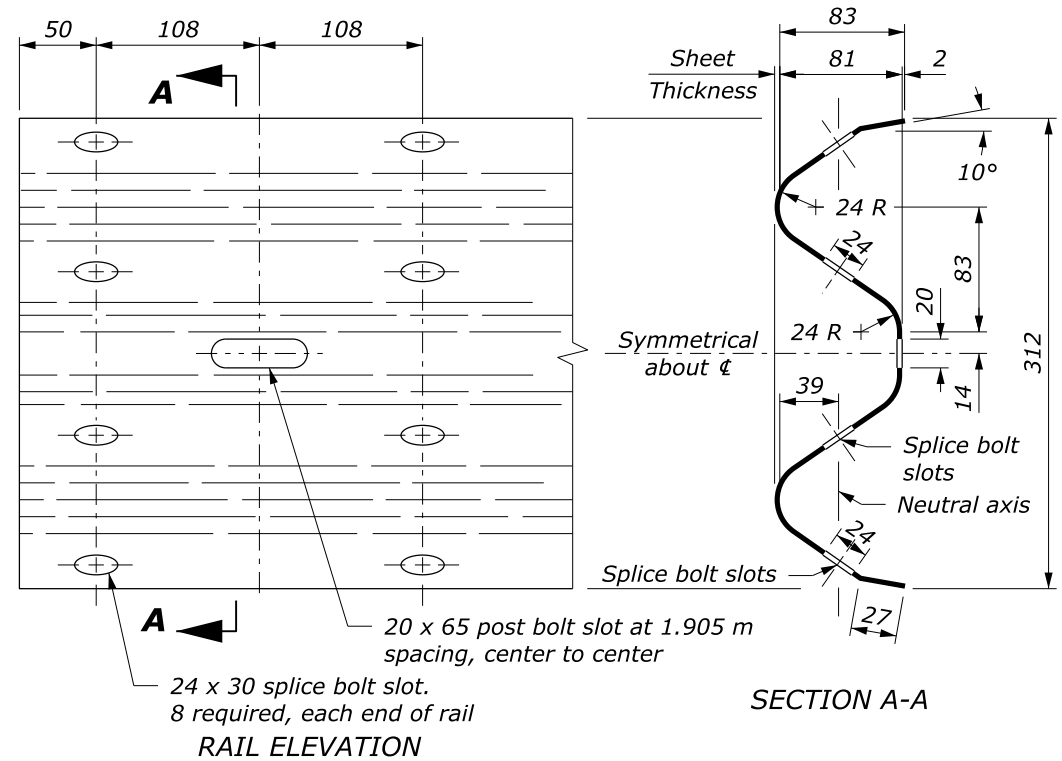


**ALTERNATE HOLE ARRANGEMENT POST AND BLOCK DETAIL**

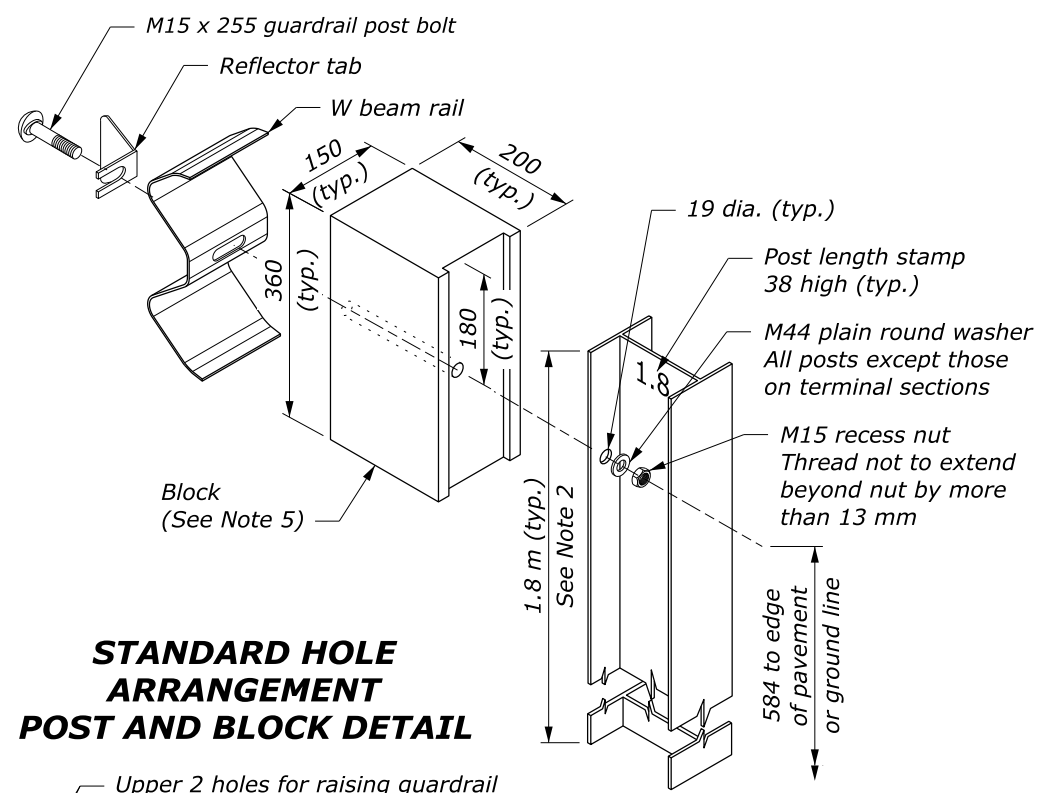


U.S. DEPARTMENT OF TRANSPORTATION, FHWA OFFICE OF FEDERAL LANDS HIGHWAY	FLH STANDARD 617-11
<b>G4 W-BEAM GUARDRAIL STEEL POSTS</b>	SPECIFICATION FP-14
	APPROVED FOR USE 1/2024

15 July 2024 2:12 PM c:\pwwork\00419223\Std617-11\p14.dgn [Std 617-11]



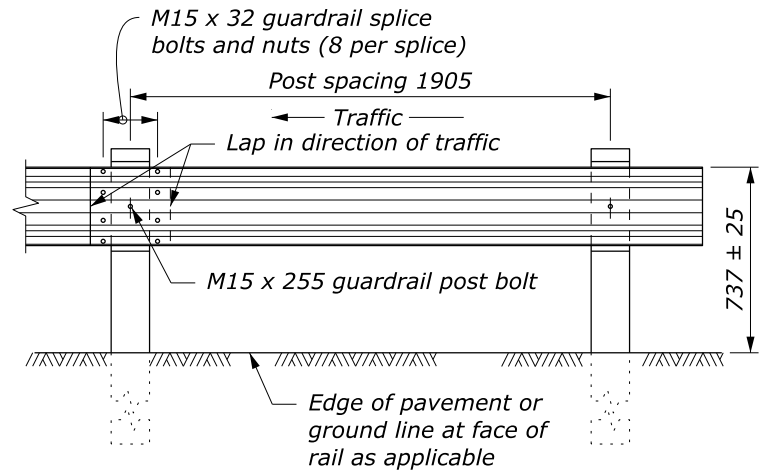
**STANDARD HOLE ARRANGEMENT POST AND BLOCK DETAIL**



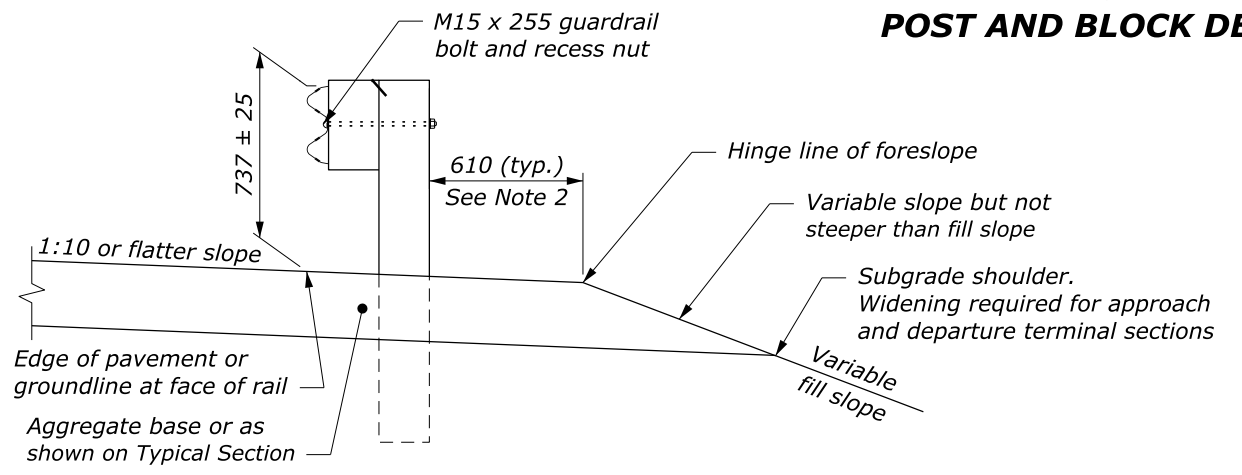
**NOTE:**

- When encountering impenetrable material, see Standard M617-13.
- See Special Contract Requirements when 2 m or longer posts are specified.
- See Special Contract Requirements when the alternate hole arrangement is specified.
- Install delineator every fourth post. Fasten delineator to post using two galvanized 50 mm x 9.5 mm bolts with a washer on both sides, a lock washer, and nut; or fasten as specified by the manufacturer. Alternate delineator types may be used if approved.
- Block may be wood, plastic, or composite material. Use consistent material throughout the length of guardrail run.
- Dimensional tolerances not shown or implied are intended to be those consistent with the proper functioning of the part, including its appearance, and accepted manufacturing practices.
- Furnish hardware in the metric sizes shown. Equivalent US Customary sizes may be used when metric sizes are unavailable.

**W BEAM RAIL**

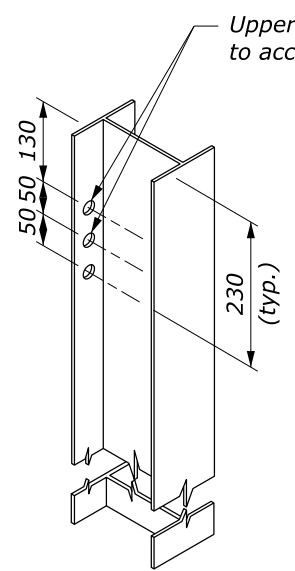


**POST SPACING STANDARD POST SECTION**



**TYPICAL GUARDRAIL CROSS SECTION**

**ALTERNATE HOLE ARRANGEMENT POST AND BLOCK DETAIL**

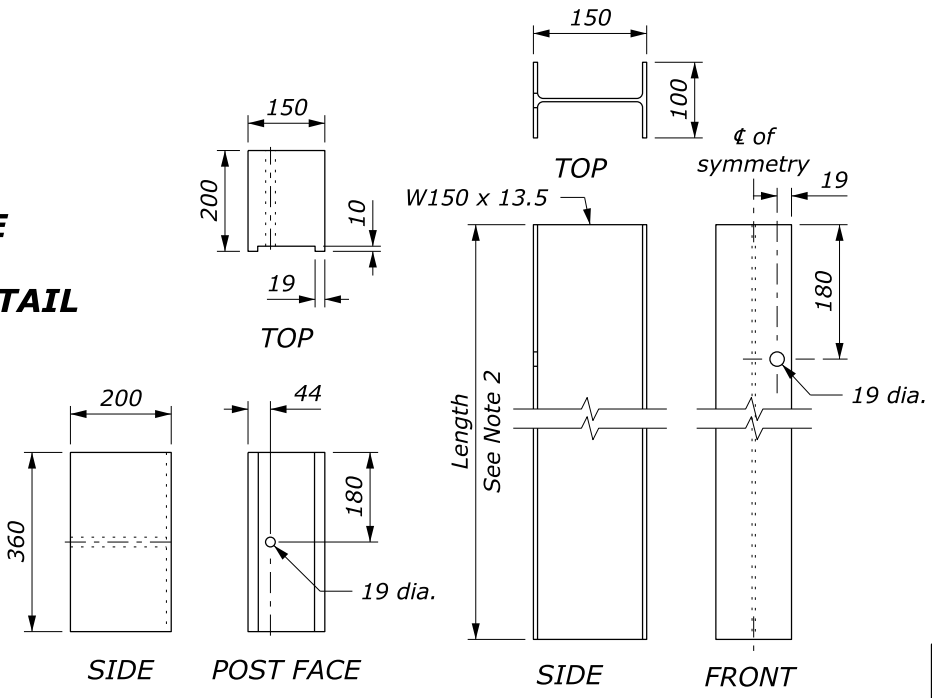


L	Thread Length
32	30 minimum
50	45 minimum
255	100 minimum
460	100 minimum
640	100 minimum

**M15 GUARDRAIL BOLT**

**M15 RECESS NUT**

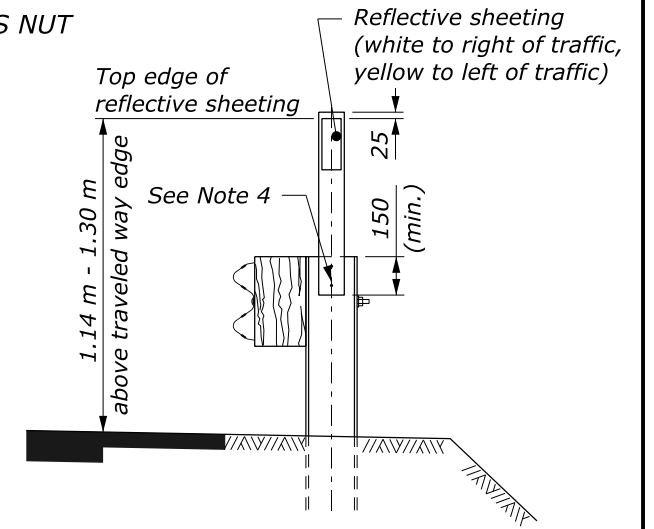
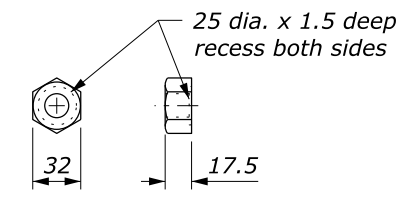
**GUARDRAIL BOLT AND RECESS NUT**



**BLOCK**

**STRUCTURAL SHAPE POST (STANDARD HOLE ARRANGEMENT)**

NO SCALE



**FLEXIBLE GUIDE POST GUARDRAIL MOUNT**

This drawing contains **Metric** units of measure. Dimensions without units are millimeters.

U.S. DEPARTMENT OF TRANSPORTATION, FHWA OFFICE OF FEDERAL LANDS HIGHWAY	FLH STANDARD M617-11
<b>G4 W-BEAM GUARDRAIL STEEL POSTS</b>	SPECIFICATION FP-14
	APPROVED FOR USE 1/2024

c:\pwwork\0419223\Std617-11fp14.dgn [Std M617-11] 15 July 2024 2:00 PM