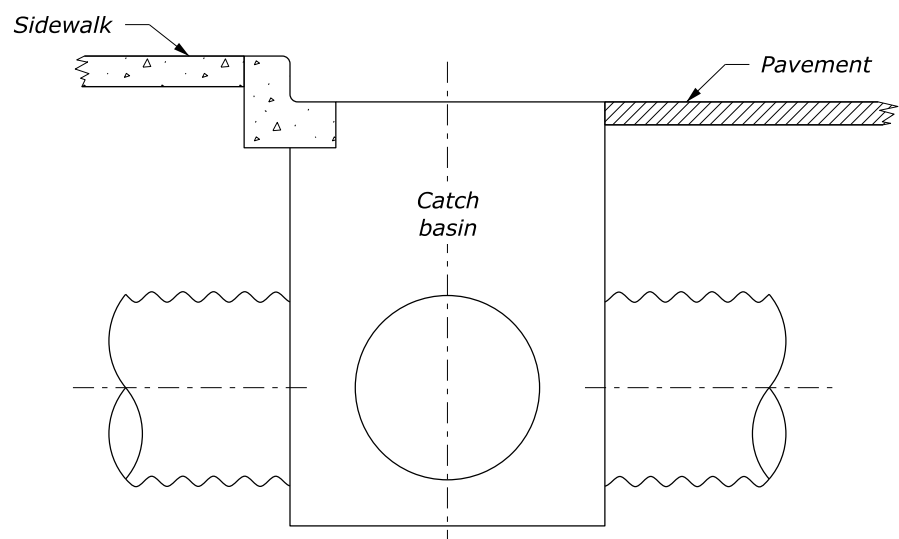
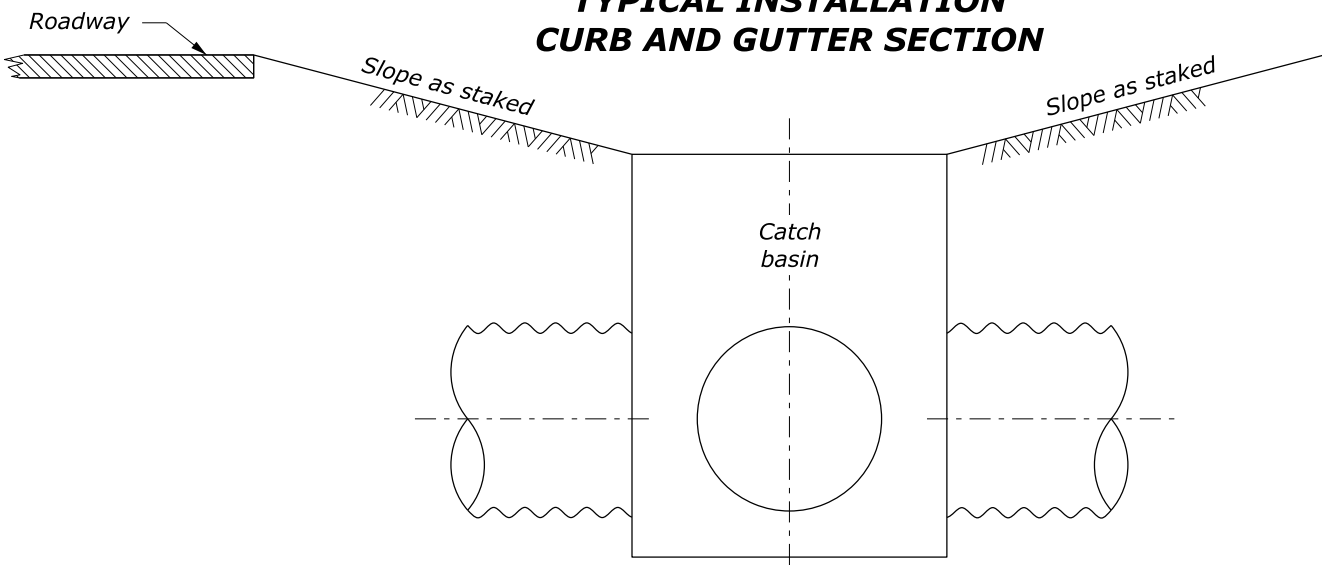


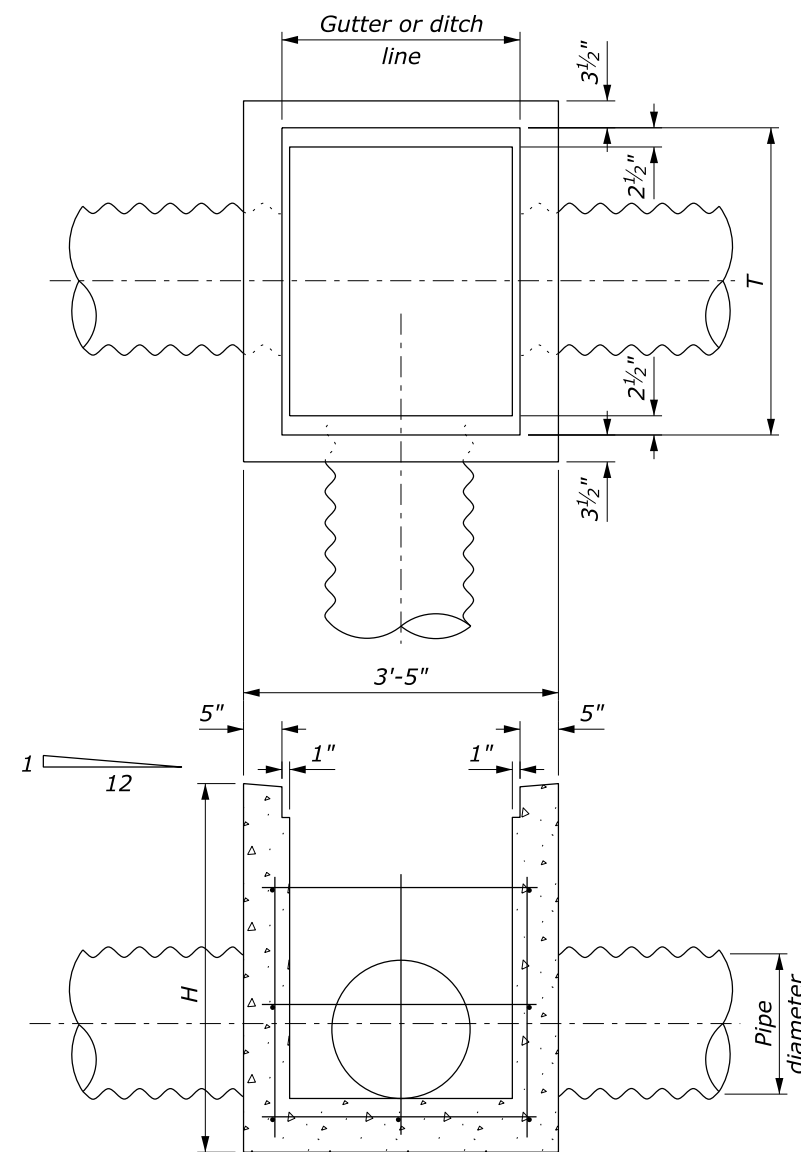
TYPICAL INSTALLATION CURB SECTION



TYPICAL INSTALLATION CURB AND GUTTER SECTION



TYPICAL INSTALLATION DITCH SECTION



All reinforcing steel #4 at 12"±.
Bend to clear pipe

INLET DETAIL

NOTE:

1. Chamfer all exposed edges $\frac{3}{4}$ inch and finish all exposed surfaces with a Class 1 ordinary finish.
2. The minimum concrete cover to the face of any bar is 2 inches unless otherwise shown.
3. See Standard 604-2 for Type A Frame and Grate and Standard 604-3 for Type B Frame and Grate.

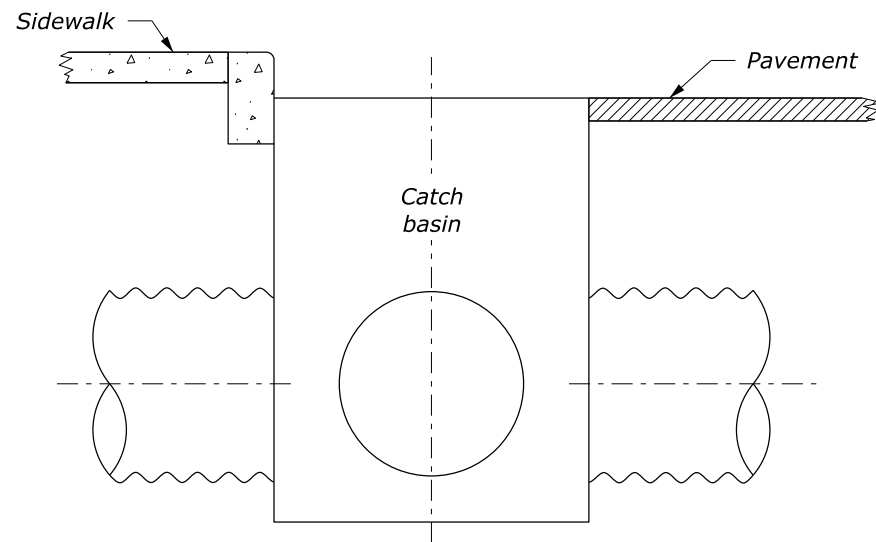
CONCRETE CATCH BASINS			
PIPE SIZE DIAMETER	DEPTH H	FRAME AND GRATE T	
		TYPE A	TYPE B
12"	3'-0"	2'-6"	2'-6"
18"	3'-0"	2'-6"	2'-6"
24"	4'-0"	3'-3"	3'-4"
30"	4'-0"	4'-0"	4'-2"
36"	4'-6"	4'-9"	5'-0"
42"	5'-0"	5'-6"	5'-5"
48"	5'-6"	6'-3"	6'-3"

CONCRETE CATCH BASINS				
PIPE SIZE DIAMETER	ESTIMATED QUANTITIES			
	CONCRETE CUYD	REINFORCING STEEL LB	FRAME AND GRATE LB	
			TYPE A	TYPE B
12"	0.7	54	215	238
18"	0.7	54	215	238
24"	1.1	81	271	314
30"	1.2	92	327	390
36"	1.5	101	383	466
42"	1.8	131	439	504
48"	2.2	151	495	580

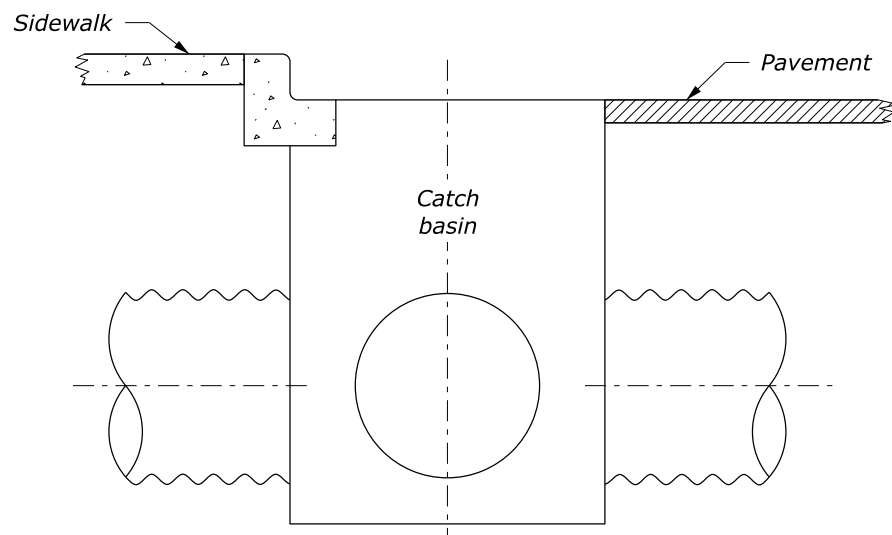
NO SCALE

U.S. DEPARTMENT OF TRANSPORTATION, FHWA OFFICE OF FEDERAL LANDS HIGHWAY	FLH STANDARD 604-1
CATCH BASIN, TYPE 1	SPECIFICATION FP-24, FP-14 APPROVED FOR USE 1/2024

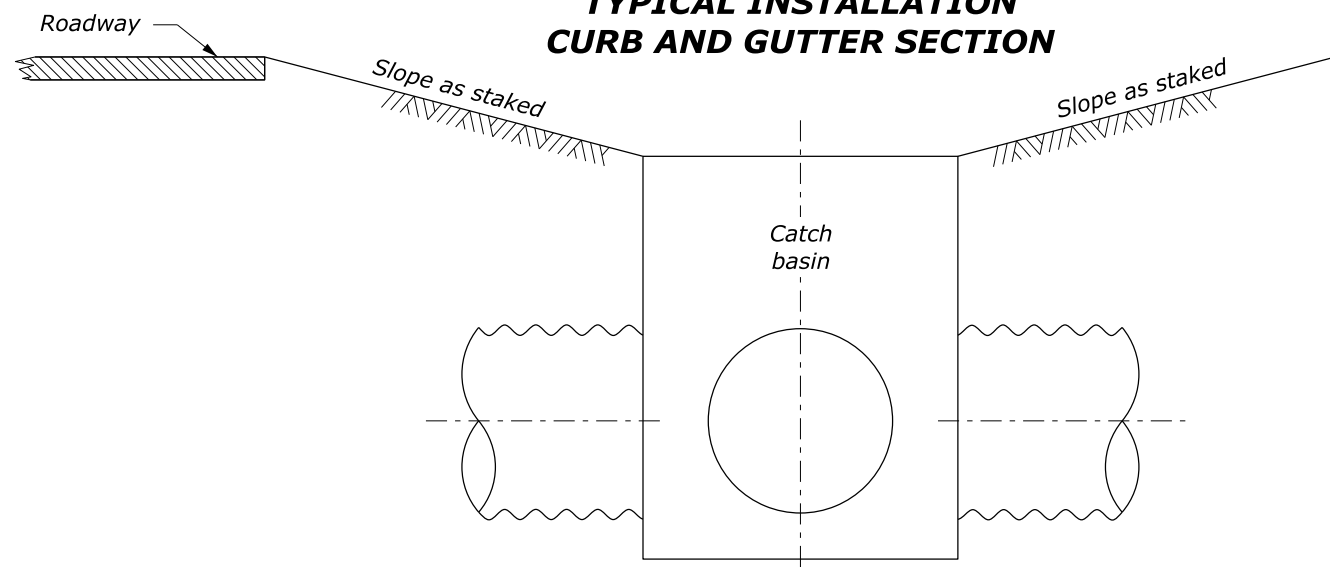
c:\pwwork\dm54776\Std604-1.dgn [Std 604-1] 23 July 2024 2:41 PM



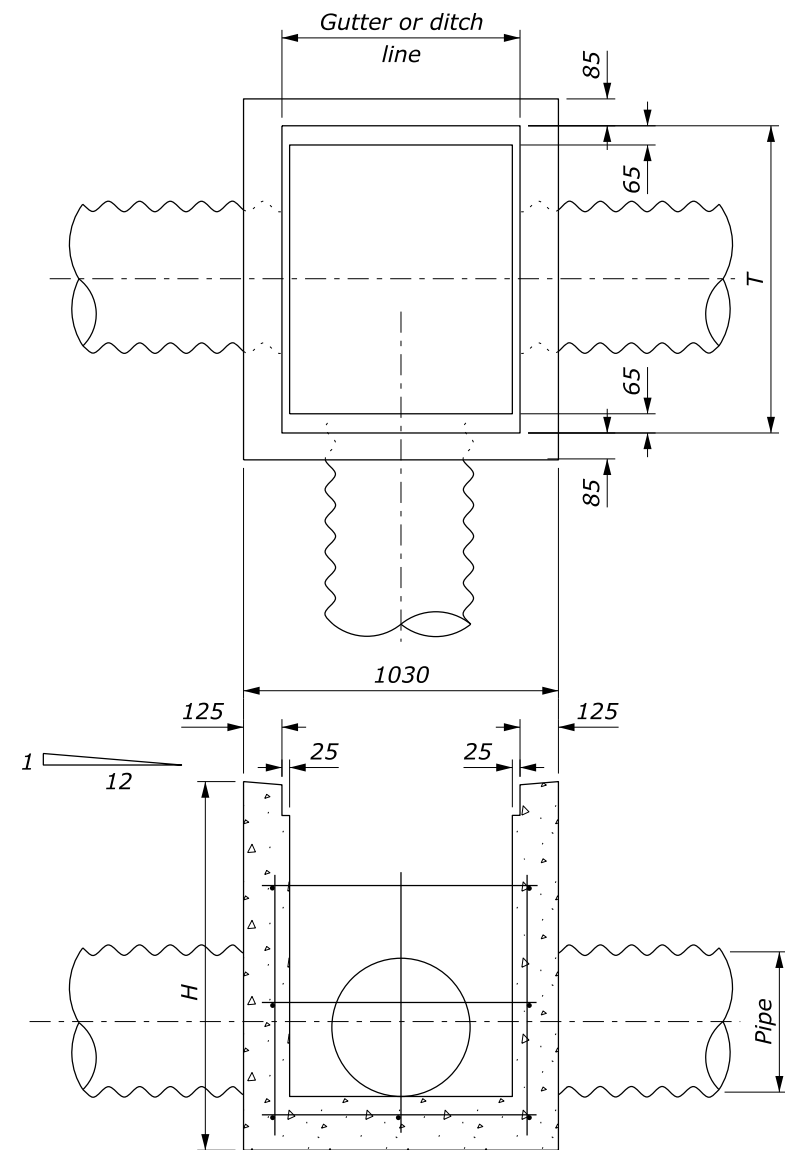
TYPICAL INSTALLATION CURB SECTION



TYPICAL INSTALLATION CURB AND GUTTER SECTION



TYPICAL INSTALLATION DITCH SECTION



All reinforcing steel #13 at 300 mm±.
Bend to clear pipe

INLET DETAIL

NOTE:

1. Chamfer all exposed edges 20 mm and finish all exposed surfaces with a Class 1 ordinary finish.
2. The minimum concrete cover to the face of any bar is 50 mm unless otherwise shown.
3. See Standard M604-2 for Type A Frame and Grate and Standard M604-3 for Type B Frame and Grate.

CONCRETE CATCH BASINS			
PIPE SIZE DIAMETER	DEPTH H	FRAME AND GRATE T	
		TYPE A	TYPE B
300	900	780	780
450	900	780	780
600	1200	1010	1020
750	1200	1240	1260
900	1350	1470	1500
1050	1500	1700	1680
1200	1650	1930	1920

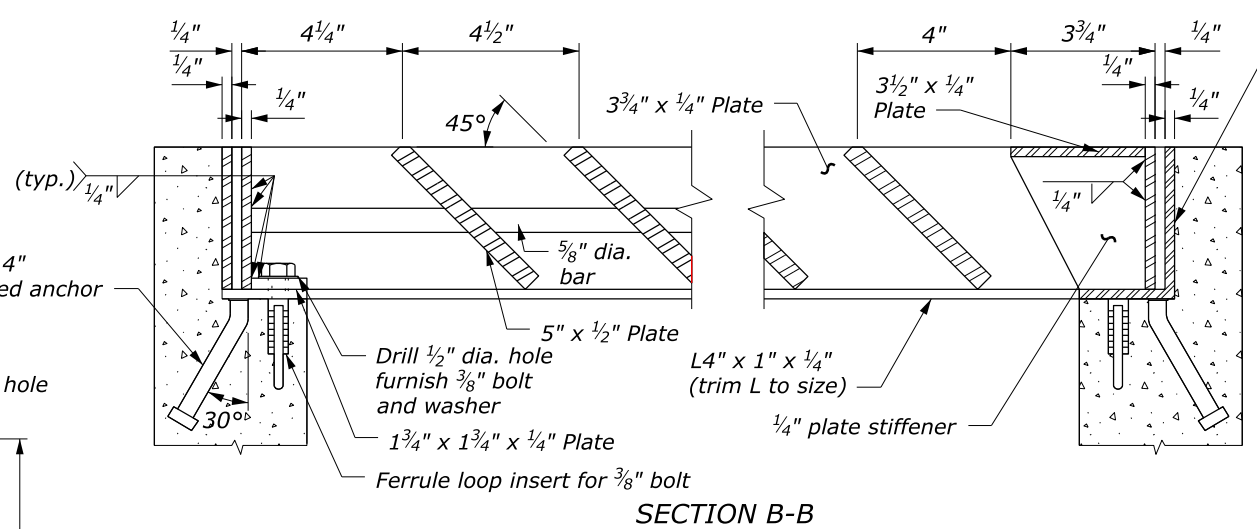
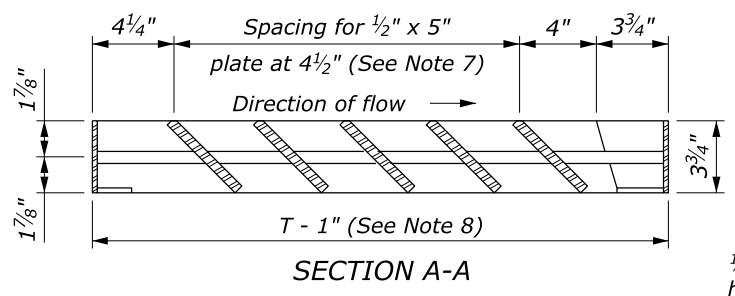
CONCRETE CATCH BASINS				
PIPE SIZE DIAMETER	ESTIMATED QUANTITIES			
	CONCRETE m3	REINFORCING STEEL kg	FRAME AND GRATE kg	
			TYPE A	TYPE B
300	0.6	24	98	108
450	0.6	24	98	108
600	0.8	37	123	142
750	0.9	42	148	177
900	1.2	46	174	211
1050	1.4	59	199	263
1200	1.7	68	225	297

This drawing contains **Metric** units of measure. Dimensions without units are millimeters.

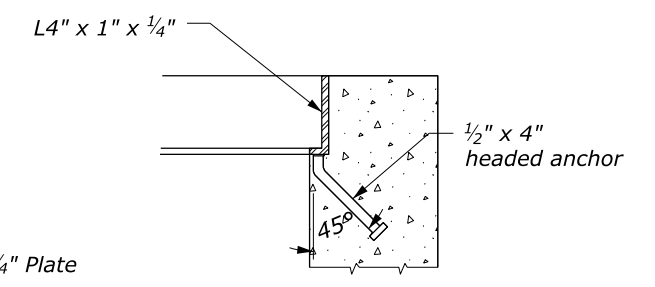
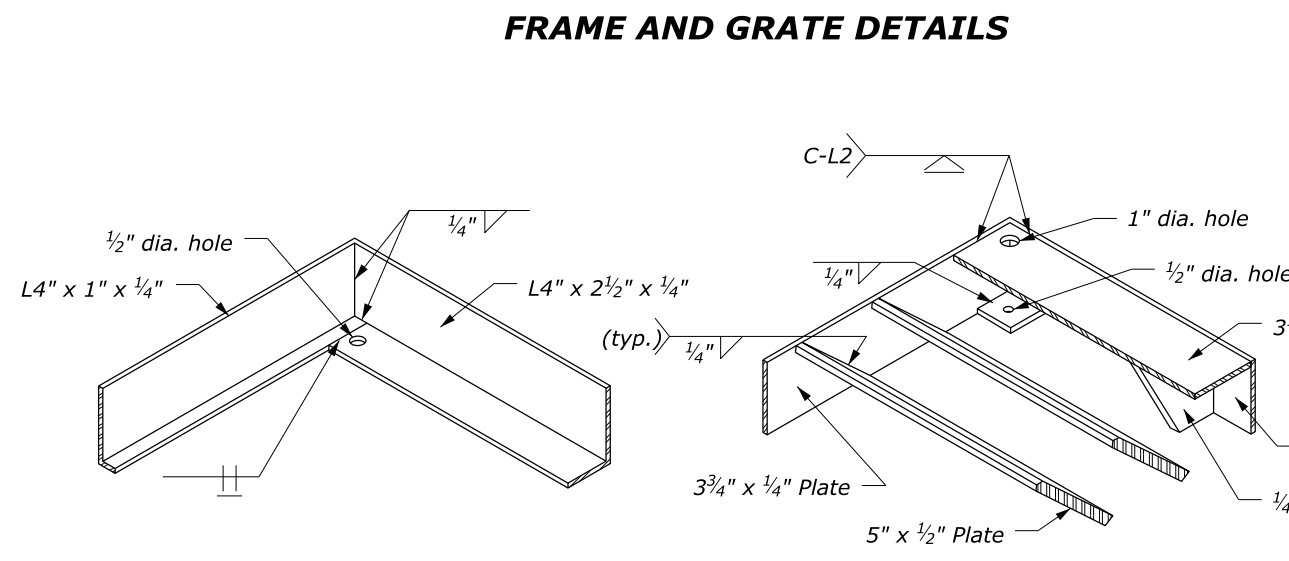
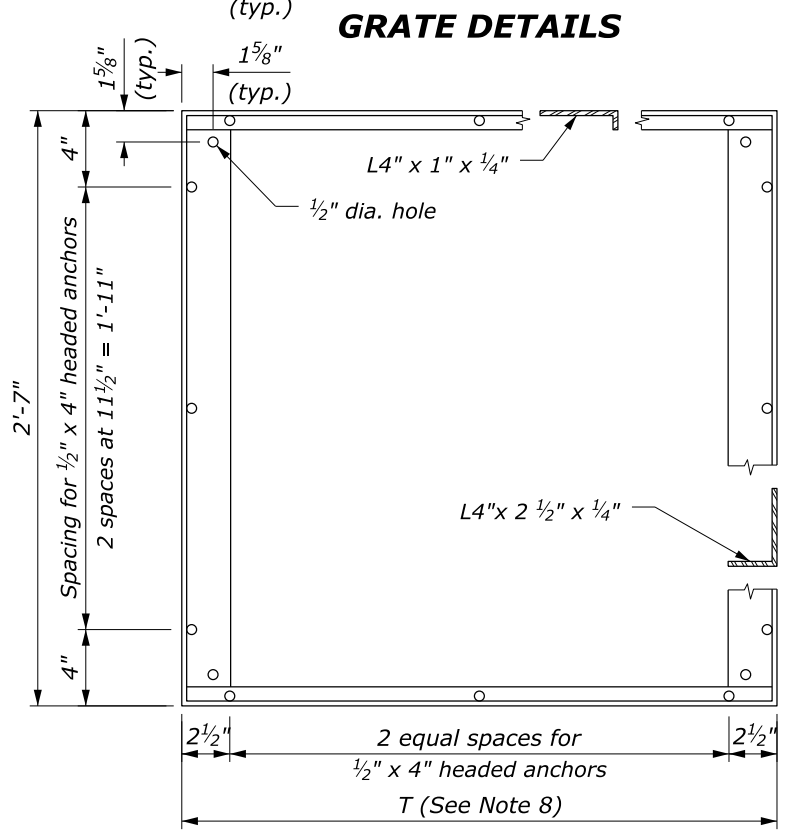
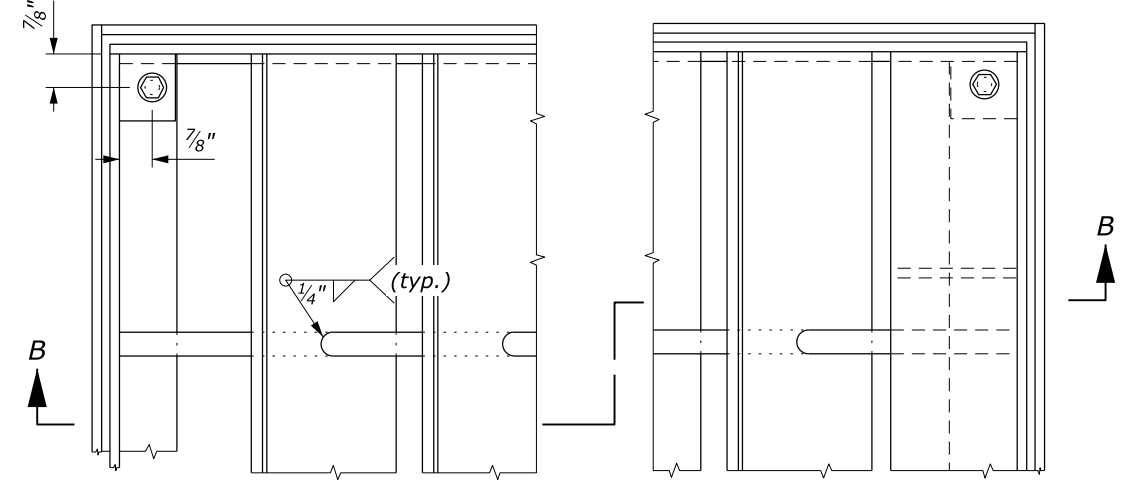
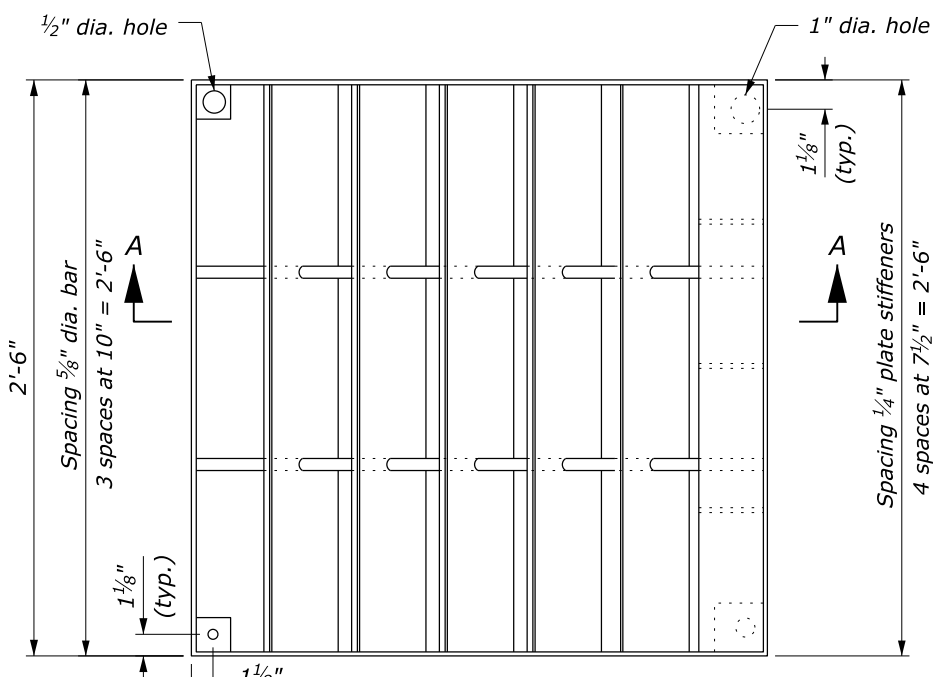
NO SCALE

U.S. DEPARTMENT OF TRANSPORTATION, FHWA OFFICE OF FEDERAL LANDS HIGHWAY	FLH STANDARD M604-1
CATCH BASIN, TYPE 1	SPECIFICATION FP-24, FP-14
	APPROVED FOR USE 1/2024

c:\pwwork\dms44776\Std604-1.dgn [Std M604-1] 23 July 2024 1:43 PM

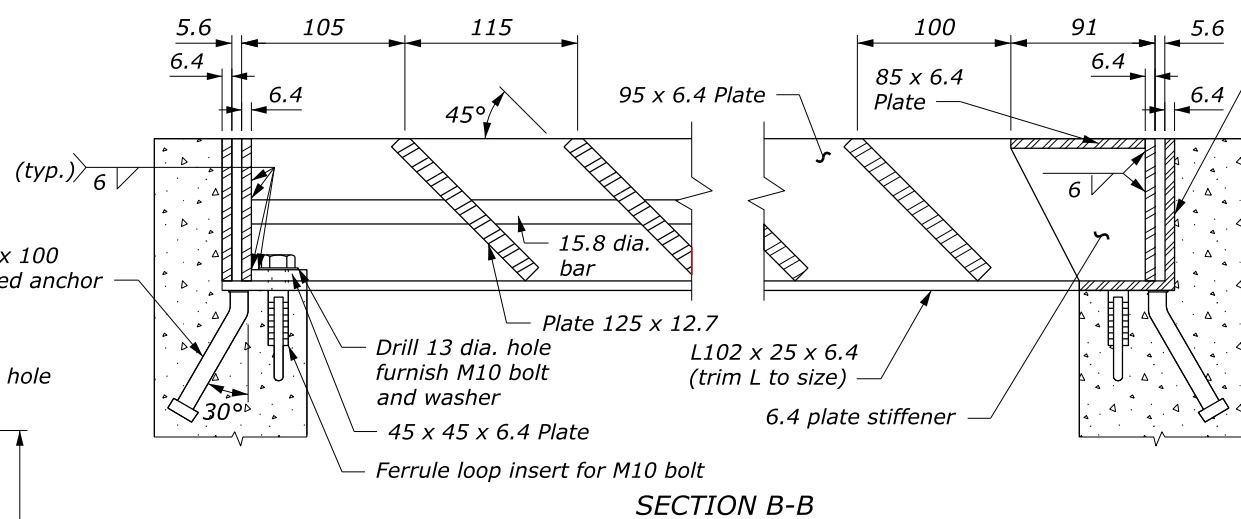
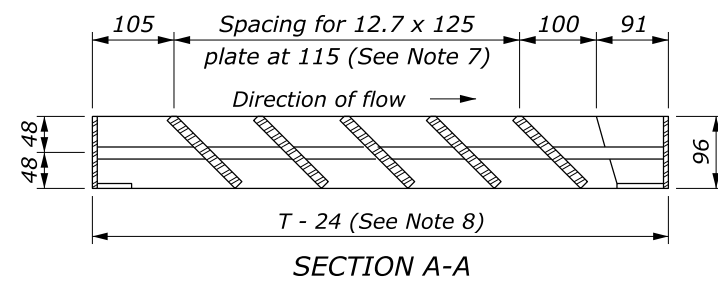


- NOTE:**
1. STRUCTURAL STEEL: ASTM A36.
 2. BOLTS & WASHERS: ASTM A307, Galvanized.
 3. THREADED CONCRETE ANCHORS: Ferrule loop inserts for 3/8 inch bolt or approved equal.
 4. HEADED CONCRETE ANCHORS: Weld to frame with a full penetration butt weld.
 5. WELDING: Weld in conformance with the Standard Specifications. Unless otherwise indicated seal weld all joints with a minimum size fillet weld, based on material thickness. Grind smooth all contact surfaces. FINISH: Galvanized after fabrication.
 6. Estimated weight, frame and grate (2'-6" x 2'-6") 215 lbs. Increase or decrease weight by 28 lbs for each 1/2 inch increment.
 7. Number of plates varies according to pipe diameter. See Standard 604-1.
 8. See Standard 604-1 for dimensions of T.

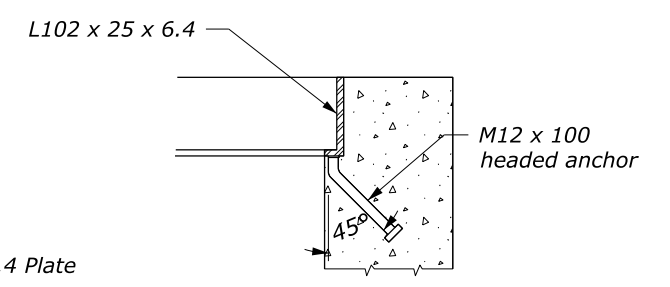
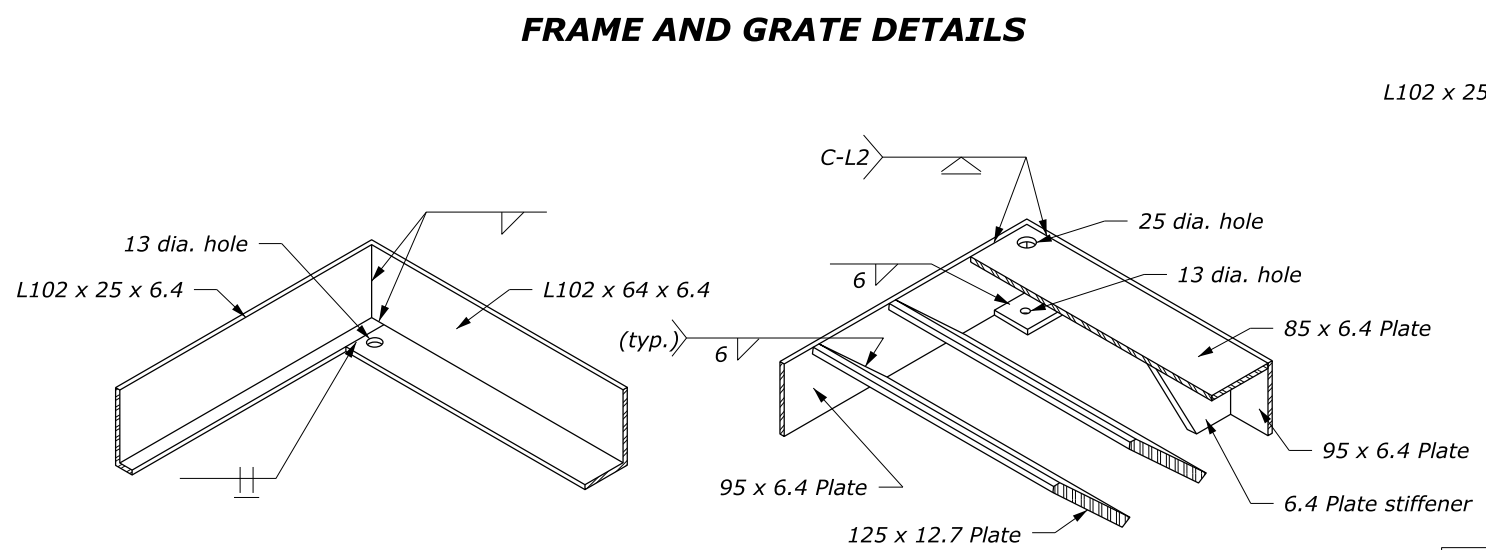
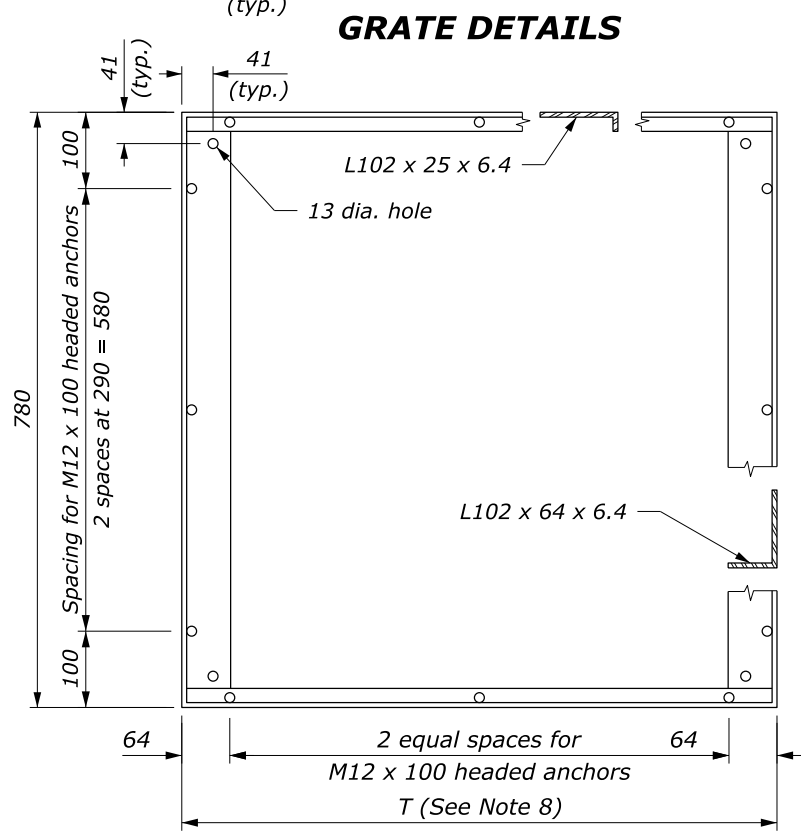
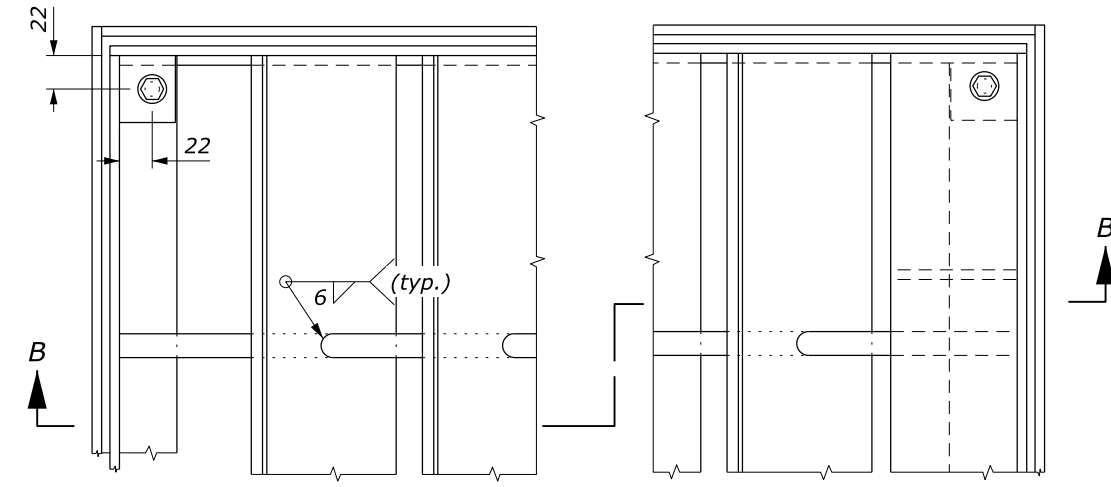
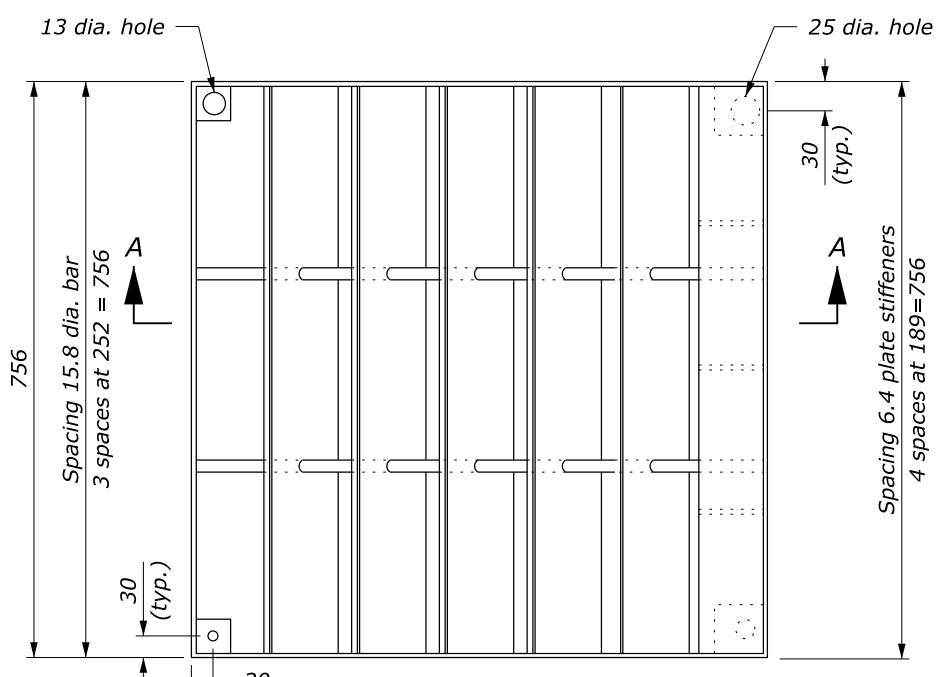


U.S. DEPARTMENT OF TRANSPORTATION, FHWA OFFICE OF FEDERAL LANDS HIGHWAY	FLH STANDARD 604-2
METAL FRAME AND GRATE TYPE A	SPECIFICATION FP-24, FP-14
	APPROVED FOR USE 1/2024

NO SCALE



- NOTE:**
1. STRUCTURAL STEEL: ASTM A36.
 2. BOLTS & WASHERS: ASTM A307, Galvanized.
 3. THREADED CONCRETE ANCHORS: Ferrule loop inserts for M10 bolt or approved equal.
 4. HEADED CONCRETE ANCHORS: Weld to frame with a full penetration butt weld.
 5. WELDING: Weld in conformance with the Standard Specifications. Unless otherwise indicated seal weld all joints with a minimum size fillet weld, based on material thickness. Grind smooth all contact surfaces. FINISH: Galvanized after fabrication.
 6. Estimated weight, frame and grate (756 x 756) 97.5 kg. Increase or decrease weight by 12.7 kg for each 115 increment.
 7. Number of plates varies according to pipe diameter. See Standard M604-1.
 8. See Standard M604-1 for dimensions of T.
 9. Furnish hardware in the metric sizes shown. Equivalent U.S. Customary sizes may be used when metric sizes are unavailable.

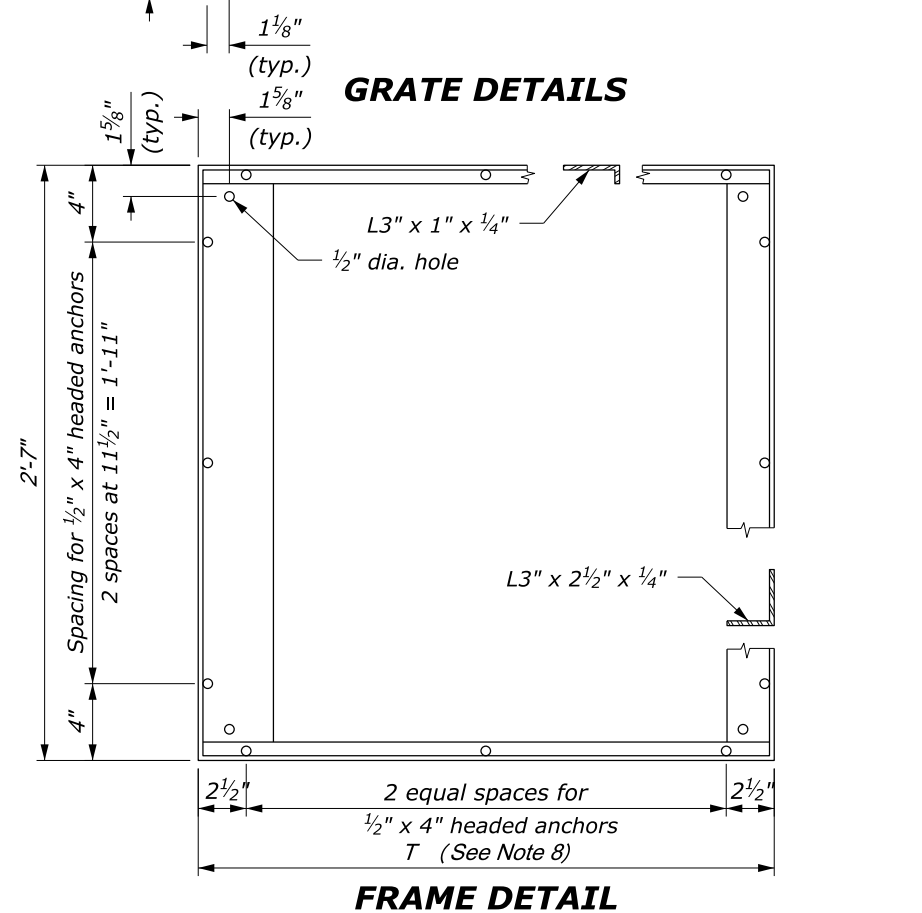
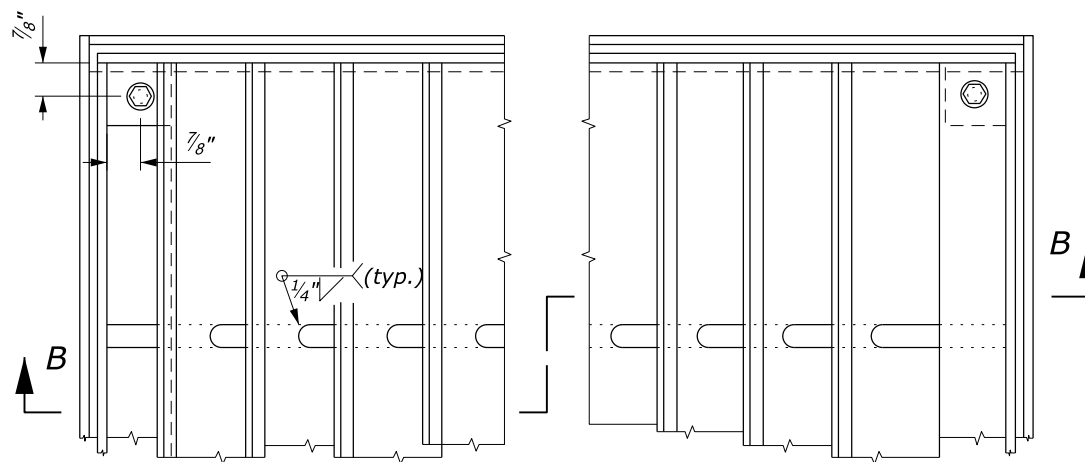
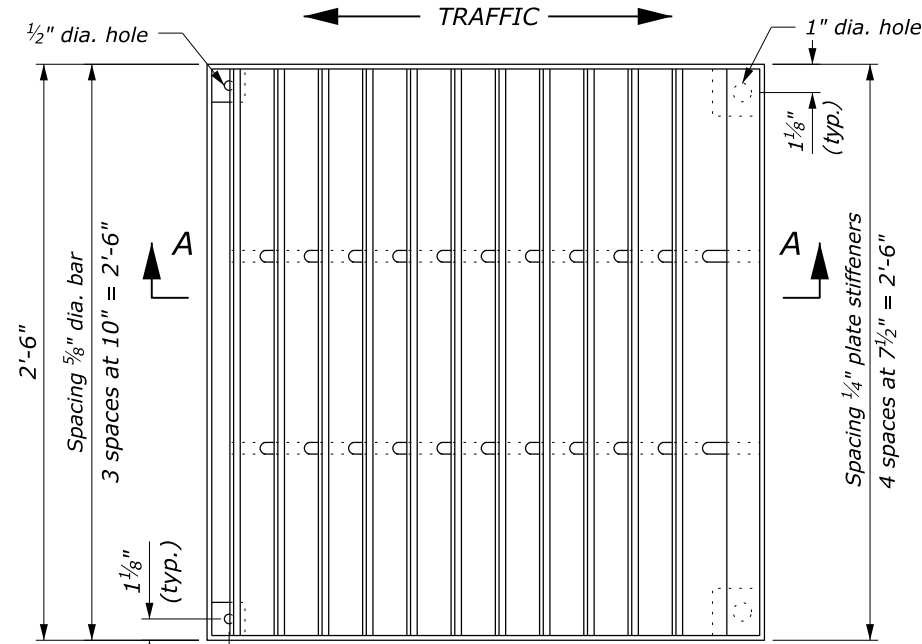
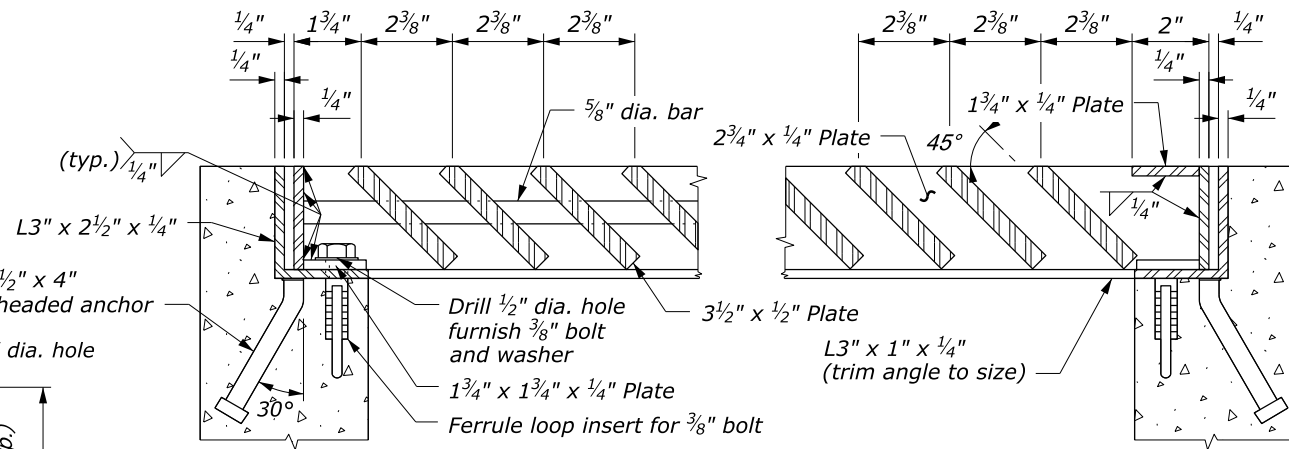
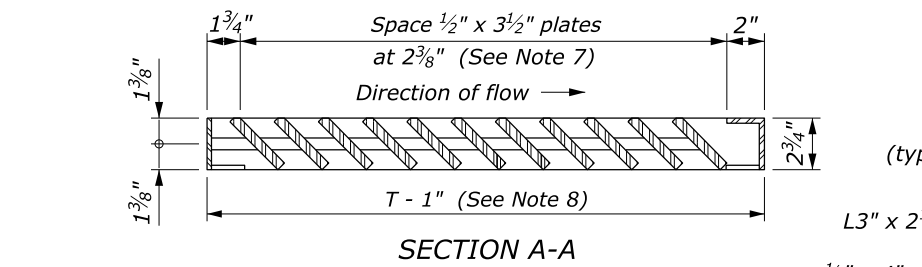


This drawing contains **Metric** units of measure. Dimensions without units are millimeters.

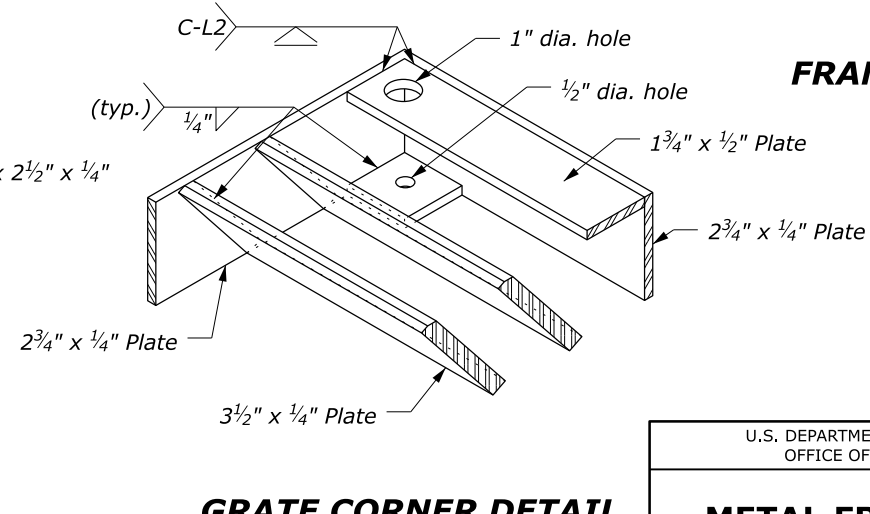
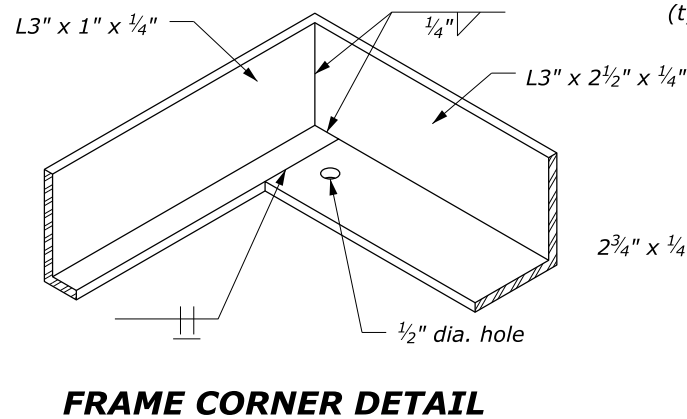
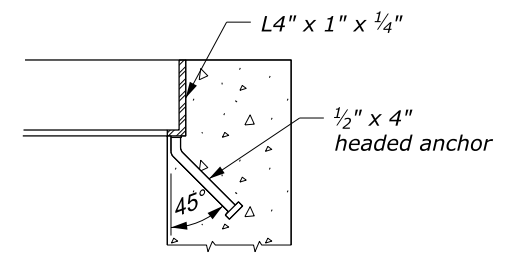
U.S. DEPARTMENT OF TRANSPORTATION, FHWA OFFICE OF FEDERAL LANDS HIGHWAY	FLH STANDARD M604-2
METAL FRAME AND GRATE TYPE A	SPECIFICATION FP-24, FP-14
	APPROVED FOR USE 1/2024

NO SCALE

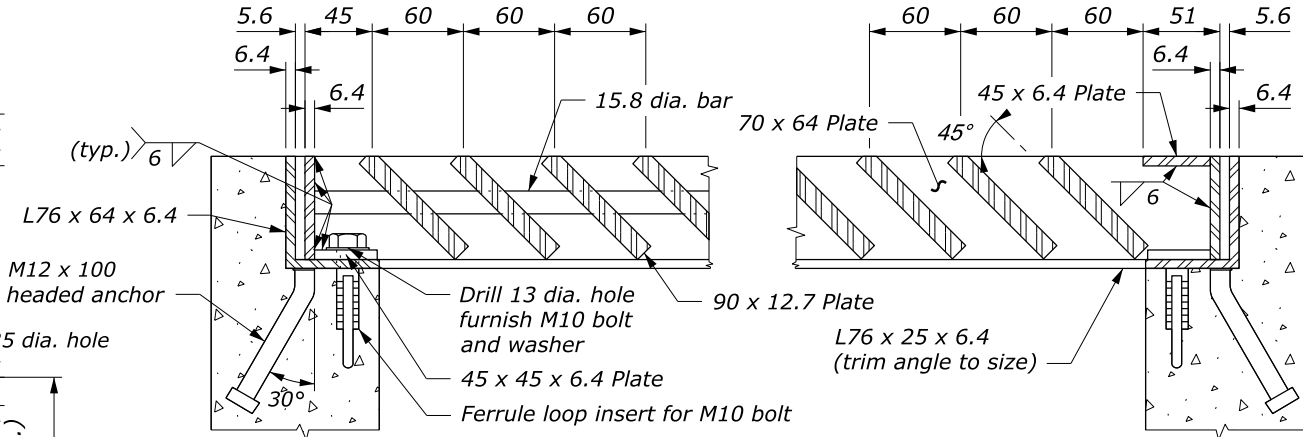
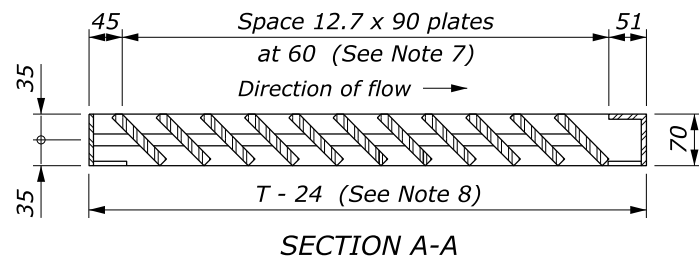
c:\pwwork\dm\44776\Std604-2.dgn [Std M604-2] 23 July 2024 2:52 PM



- NOTE:**
1. STRUCTURAL STEEL: ASTM A36.
 2. BOLTS & WASHERS: ASTM A307, Galvanized.
 3. THREADED CONCRETE ANCHORS: Ferrule loop inserts for $\frac{3}{8}$ inch bolt or approved equal.
 4. HEADED CONCRETE ANCHORS: Weld to frame with a full penetration butt weld.
 5. WELDING: Weld in conformance with the Standard Specifications. Unless otherwise indicated seal weld all joints with a minimum size fillet weld, based on material thickness. Grind smooth all contact surfaces. FINISH: Galvanized after fabrication.
 6. Estimated weight, frame and grate ($2'-6"$ x $2'-6"$) 238 lbs. Increase or decrease weight by 19 lbs for each $2\frac{3}{8}$ -inch increment.
 7. Number of plates varies according to pipe diameter. See Standard 604-1.
 8. See Standard 604-1 for dimensions of T .

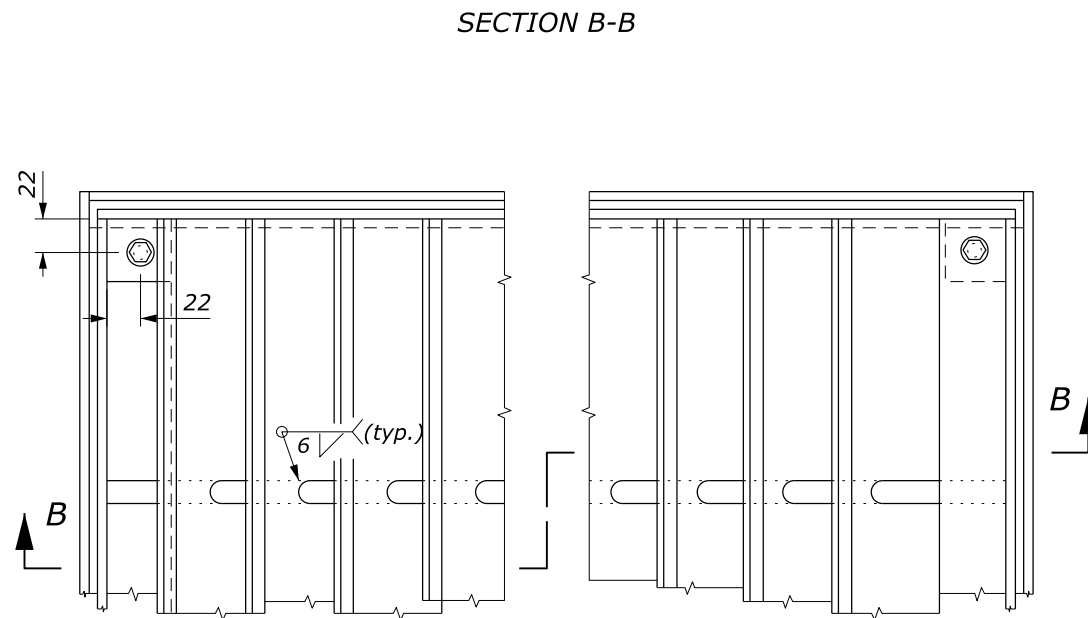
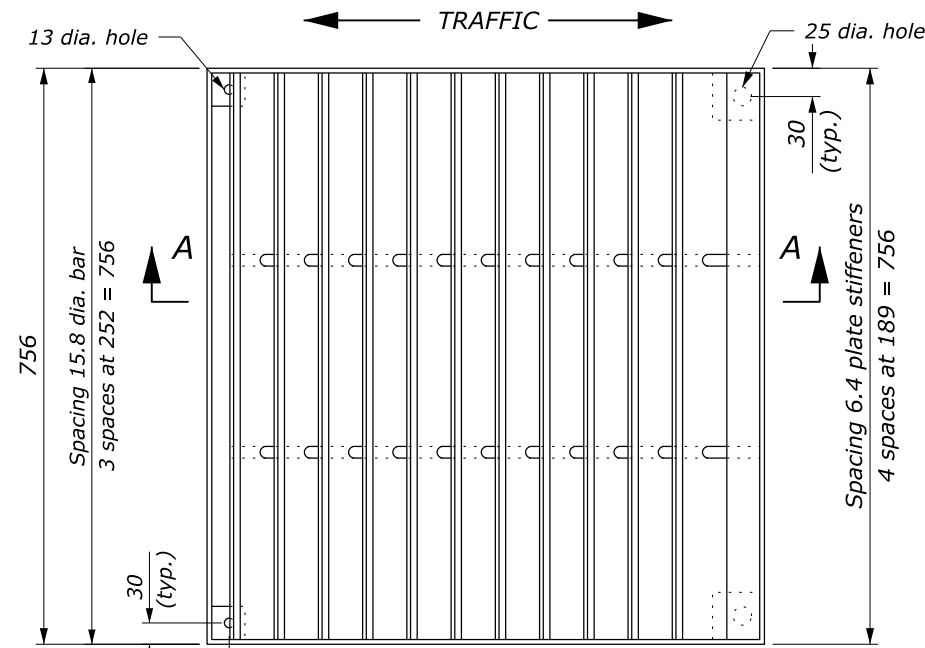


U.S. DEPARTMENT OF TRANSPORTATION, FHWA OFFICE OF FEDERAL LANDS HIGHWAY	FLH STANDARD 604-3
METAL FRAME AND GRATE TYPE B	SPECIFICATION FP-24, FP-14 APPROVED FOR USE 1/2024



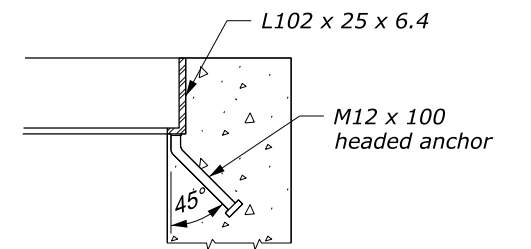
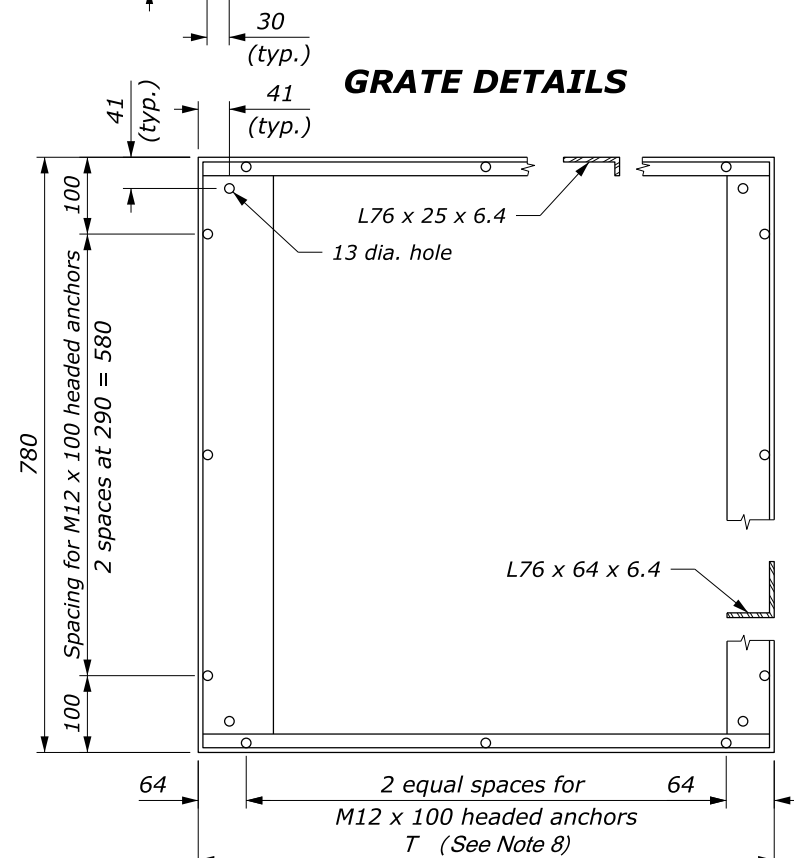
NOTE:

1. STRUCTURAL STEEL: ASTM A36.
2. BOLTS & WASHERS: ASTM A307, Galvanized.
3. THREADED CONCRETE ANCHORS: Ferrule loop inserts for M10 bolt or approved equal.
4. HEADED CONCRETE ANCHORS: Weld to frame with a full penetration butt weld.
5. WELDING: Weld in conformance with the Standard Specifications. Unless otherwise indicated seal weld all joints with a minimum size fillet weld, based on material thickness. Grind smooth all contact surfaces. FINISH: Galvanized after fabrication.
6. Estimated weight, frame and grate (756 x 756 mm) 108 kg. Increase or decrease weight by 8.6 kg for each 60 mm increment.
7. Number of plates varies according to pipe diameter. See Standard M604-1.
8. See Standard M604-1 for dimensions of T.
9. Furnish hardware in the metric sizes shown. Equivalent U.S. Customary sizes may be used when metric sizes are unavailable.

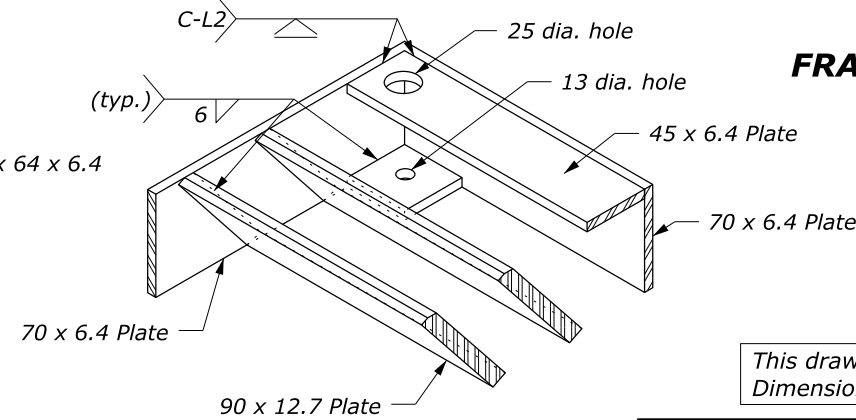
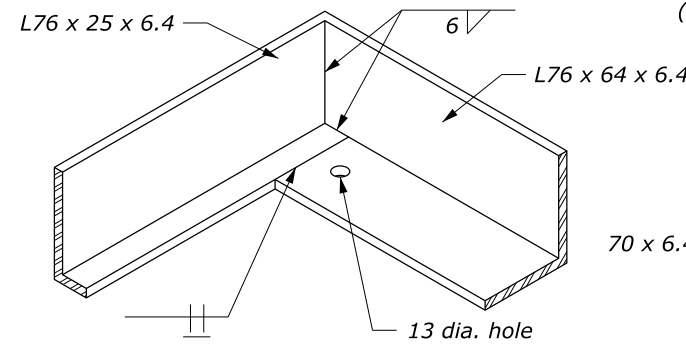


GRATE DETAILS

FRAME AND GRATE DETAILS



FRAME ANCHOR DETAIL



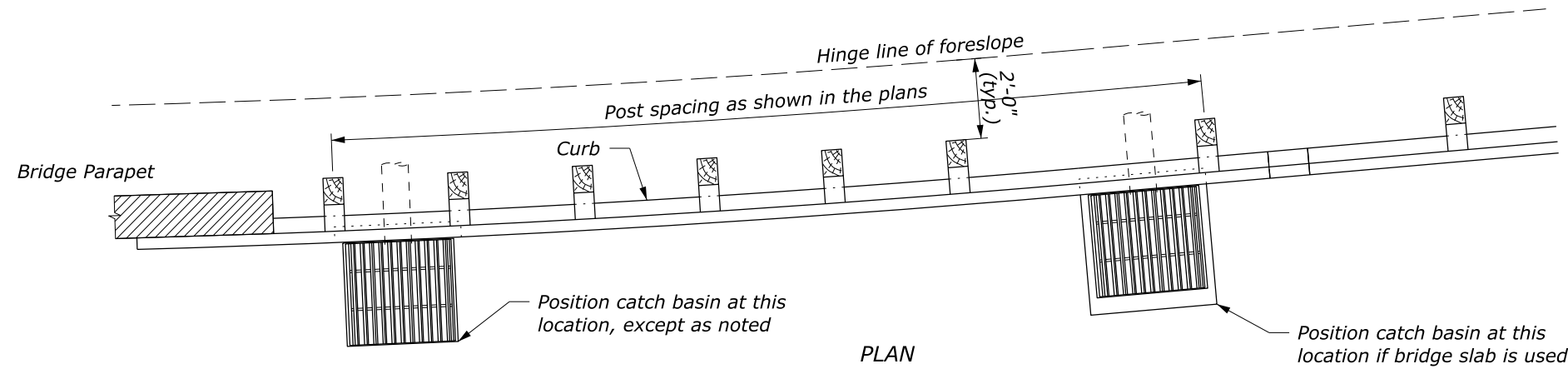
FRAME CORNER DETAIL

GRATE CORNER DETAIL

NO SCALE

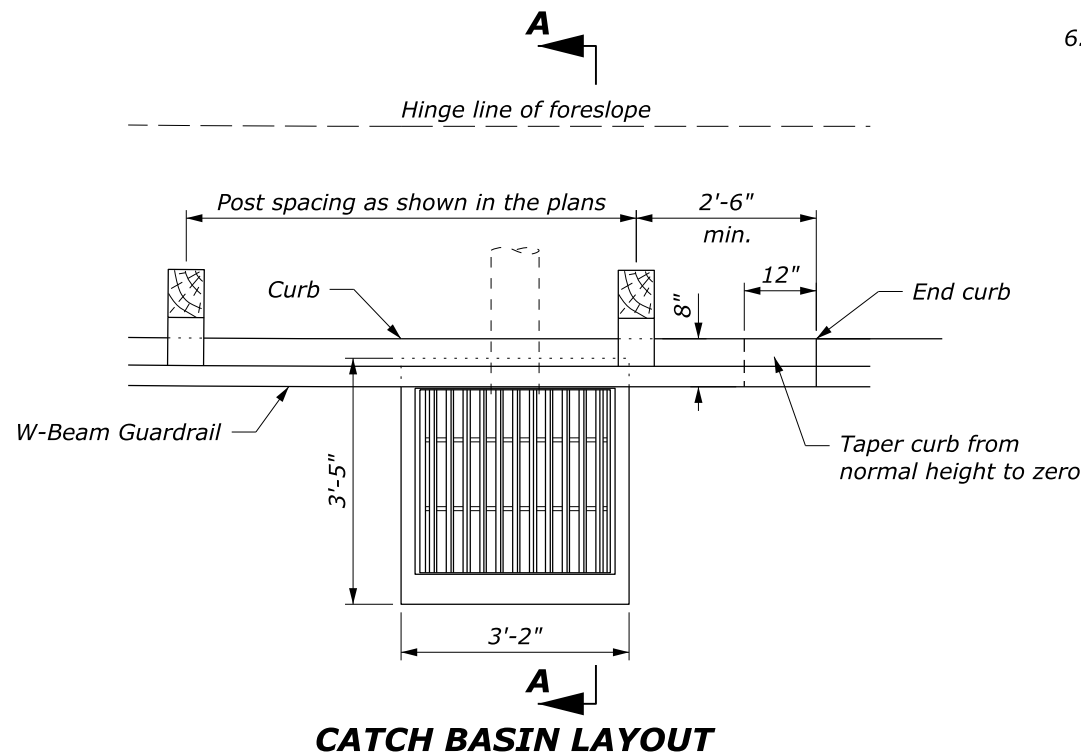
This drawing contains **Metric** units of measure. Dimensions without units are millimeters.

U.S. DEPARTMENT OF TRANSPORTATION, FHWA OFFICE OF FEDERAL LANDS HIGHWAY	FLH STANDARD M604-3
METAL FRAME AND GRATE TYPE B	SPECIFICATION FP-24, FP-14
	APPROVED FOR USE 1/2024

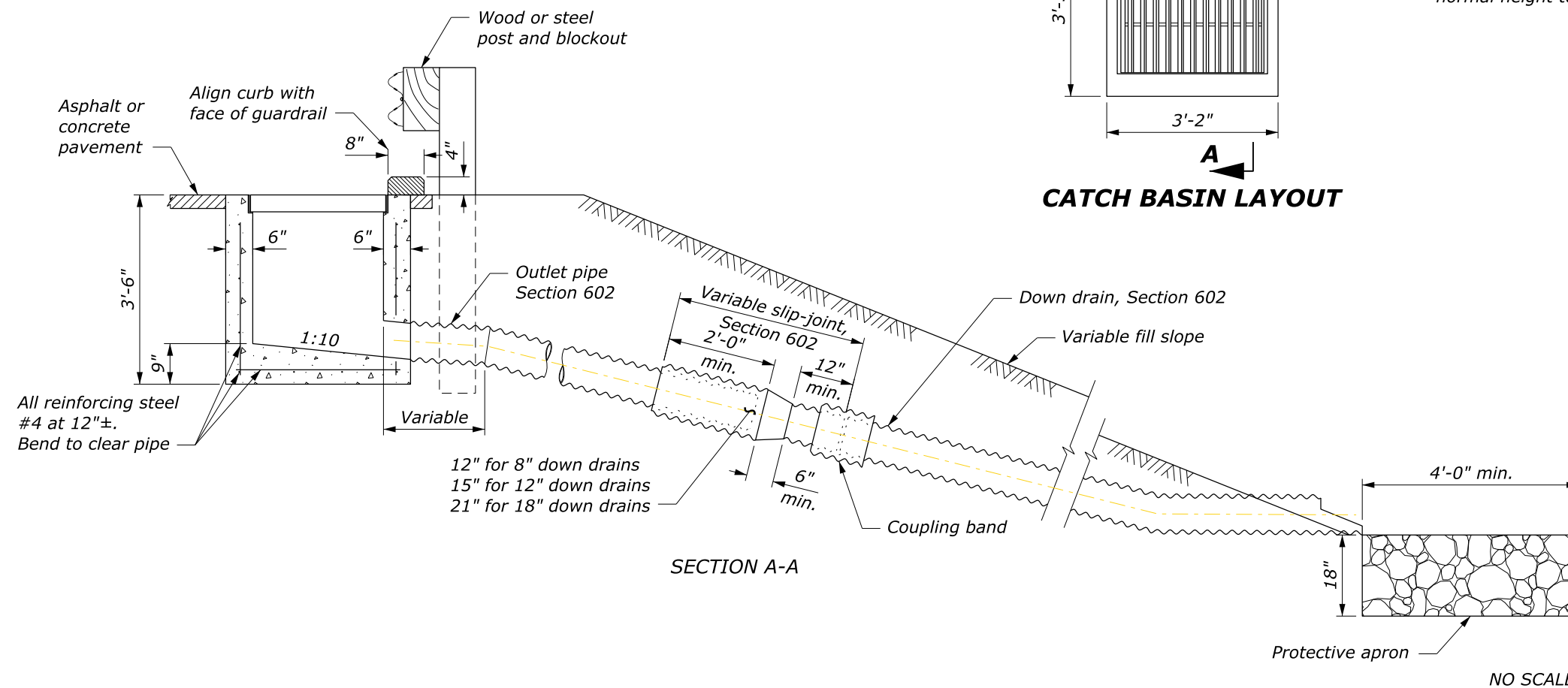


CATCH BASIN LAYOUT AT BRIDGE ENDS

DESCRIPTION	FRAME AND GRATE	
	TYPE A	TYPE B
Reinforcing Steel	70 lbs	70 lbs
Structural Steel	215 lbs	238 lbs
Concrete	0.85 cuyd	0.85 cuyd



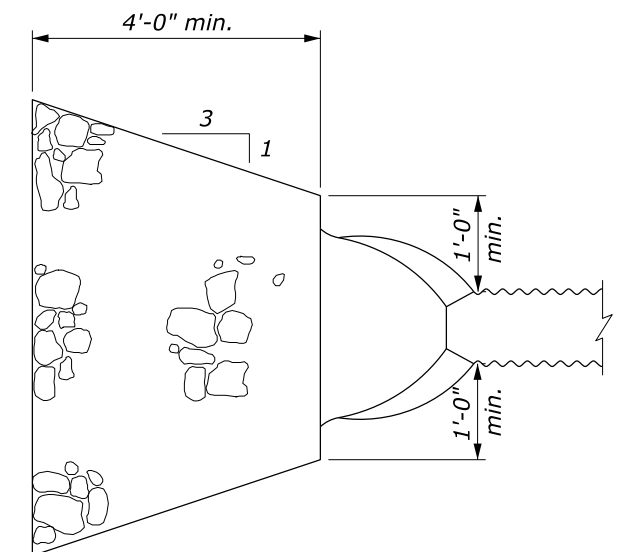
CATCH BASIN LAYOUT



SECTION A-A

NOTE:

1. Chamfer all exposed edges $\frac{3}{4}$ inch and finish all exposed surfaces with a Class 1 ordinary finish.
2. The minimum concrete cover to the face of any bar is $1\frac{1}{2}$ inches unless otherwise shown.
3. See Standard 604-2 for Type A Frame and Grate and Standard 604-3 for Type B Frame and Grate.
4. Make all coupling band connections watertight by placing $\frac{3}{16}$ -inch bead of approved caulking under each half of the bands before tightening.
5. Fabricate tapered portion of slip-joint from either flat or corrugated sheets.
6. Place Class 2 riprap according to Section 251 for protective apron.

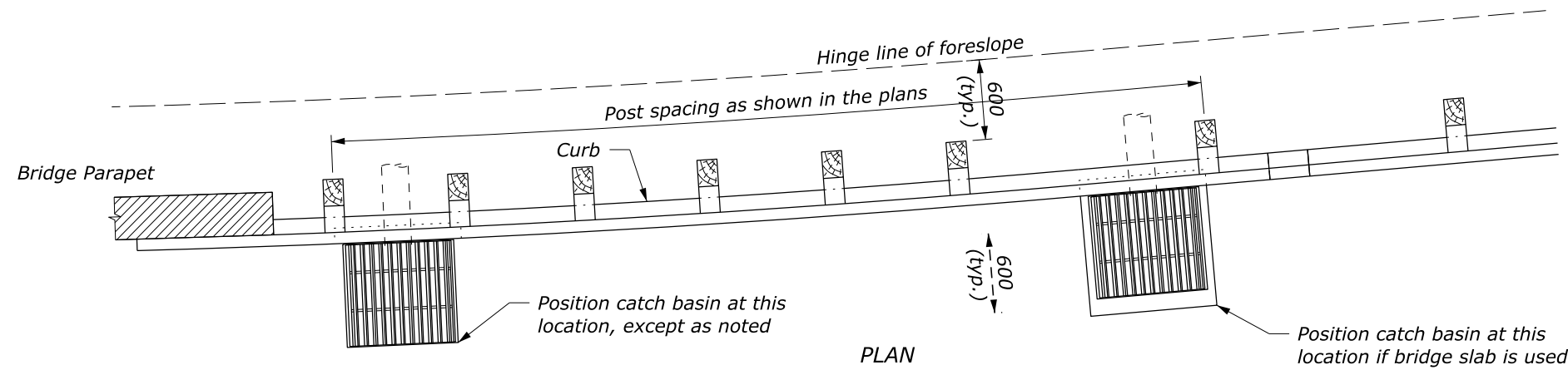


PLAN

PROTECTIVE APRON

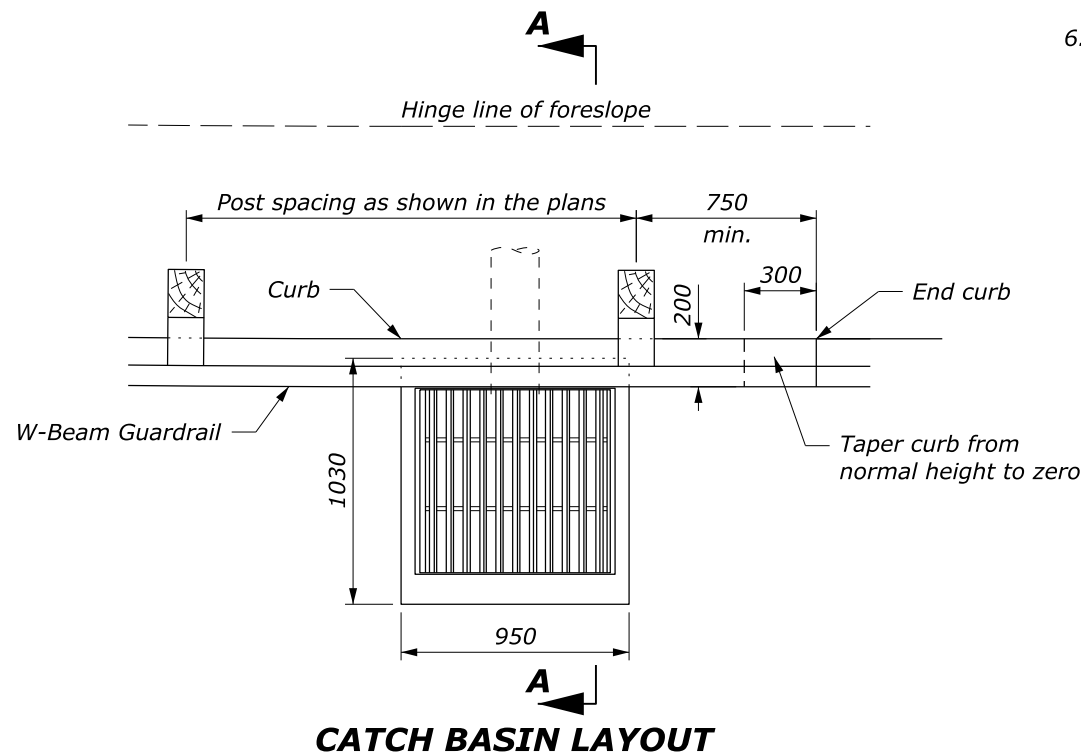
U.S. DEPARTMENT OF TRANSPORTATION, FHWA OFFICE OF FEDERAL LANDS HIGHWAY	FLH STANDARD 604-4
CATCH BASIN TYPE 2 WITH DOWN DRAIN	SPECIFICATION FP-14, FP-24 APPROVED FOR USE 1/2024

NO SCALE

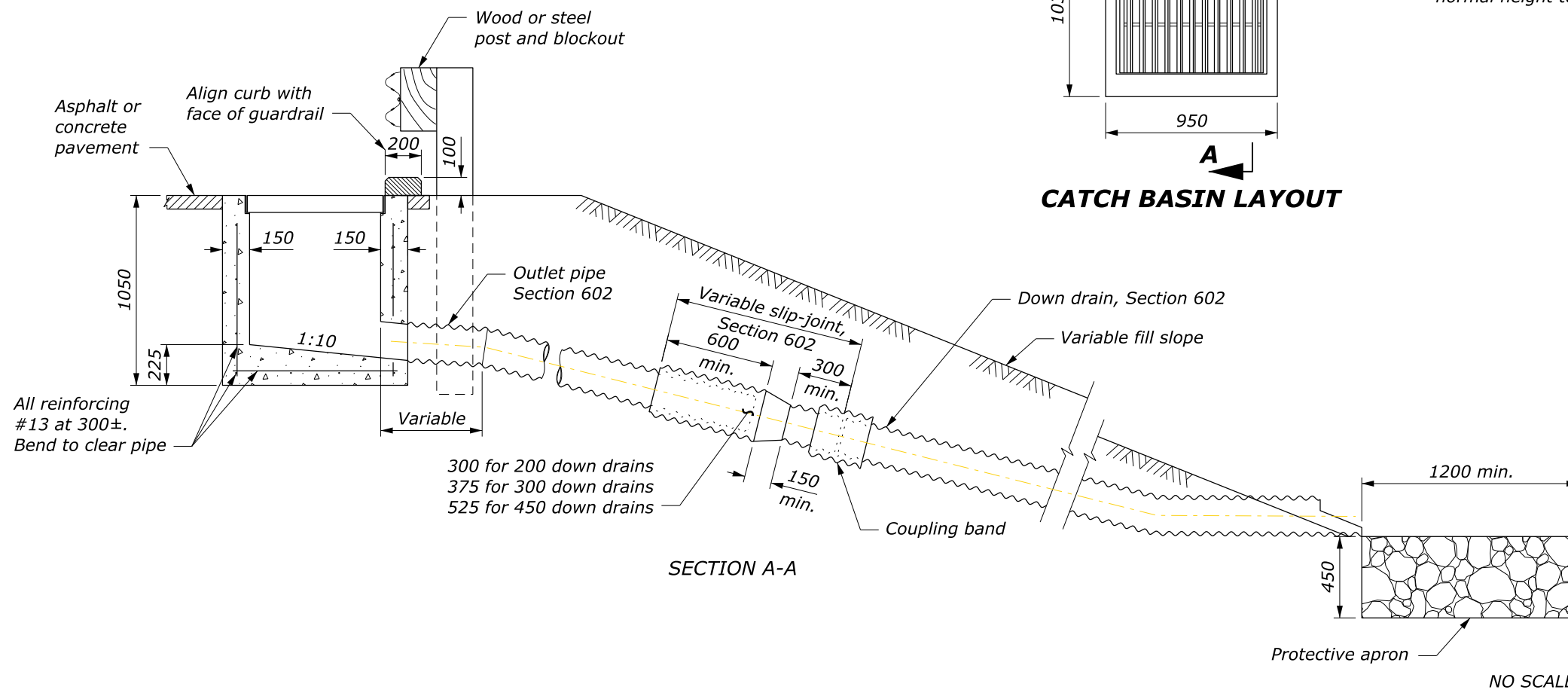


CATCH BASIN LAYOUT AT BRIDGE ENDS

DESCRIPTION	FRAME AND GRATE	
	TYPE A	TYPE B
Reinforcing Steel	32 kg	32 kg
Structural Steel	98 kg	108 kg
Concrete	0.6 m ³	0.6 m ³



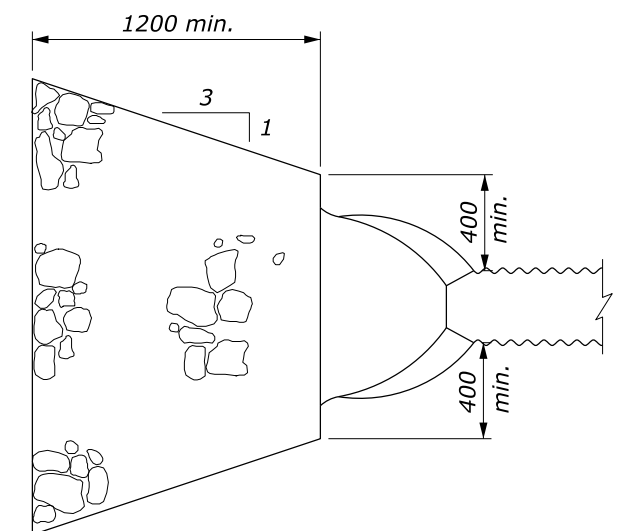
CATCH BASIN LAYOUT



SECTION A-A

NOTE:

1. Chamfer all exposed edges 20 mm and finish all exposed surfaces with a Class 1 ordinary finish.
2. The minimum concrete cover to the face of any bar is 50 mm unless otherwise shown.
3. See Standard M604-2 for Type A Frame and Grate and Standard M604-3 for Type B Frame and Grate.
4. Make all coupling band connections watertight by placing 5 mm bead of approved caulking under each half of the bands before tightening.
5. Fabricate tapered portion of slip-joint from either flat or corrugated sheets.
6. Place Class 2 riprap according to Section 251 for protective apron.



PLAN

PROTECTIVE APRON

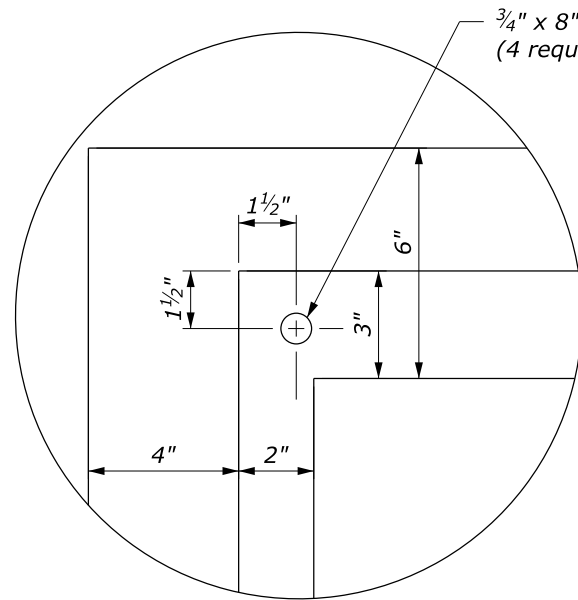
This drawing contains **Metric** units of measure. Dimensions without units are millimeters.

U.S. DEPARTMENT OF TRANSPORTATION, FHWA OFFICE OF FEDERAL LANDS HIGHWAY	FLH STANDARD M604-4
CATCH BASIN TYPE 2 WITH DOWN DRAIN	SPECIFICATION FP-24, FP-14
	APPROVED FOR USE 1/2024

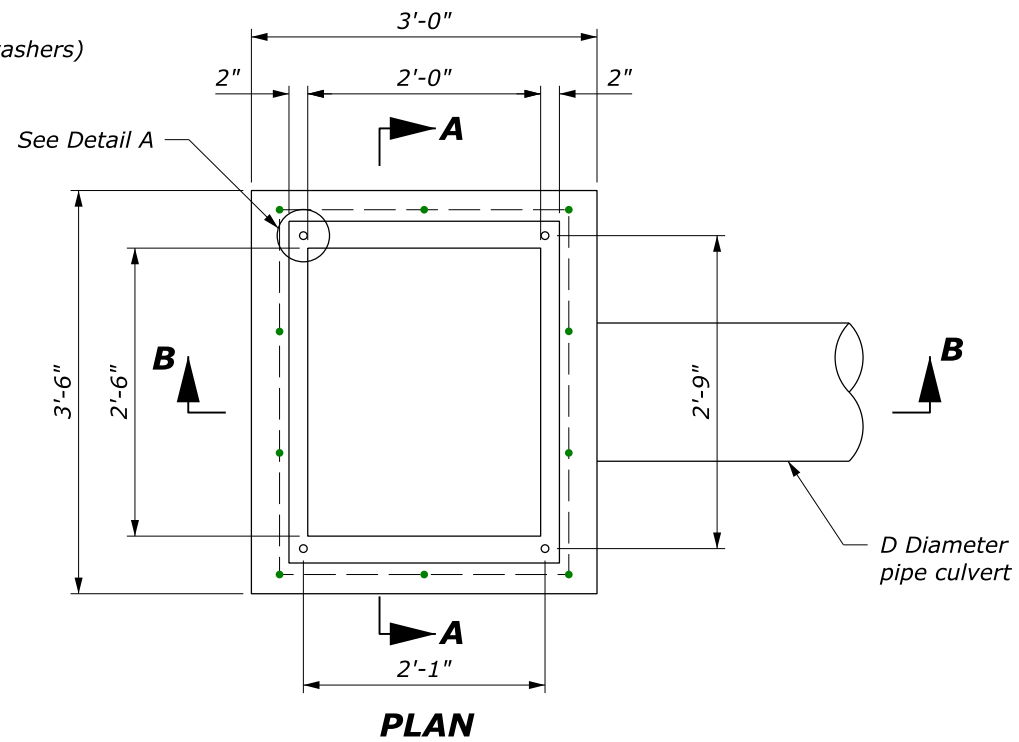
NO SCALE

NOTE:

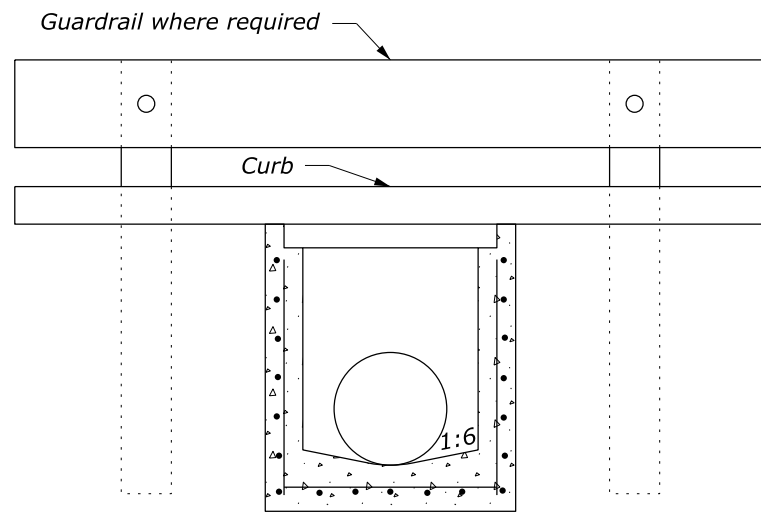
1. All reinforcing bars are #5 placed a minimum 1½-inch clear from face of concrete. In floors, place bars on 6-inch centers each way. In walls, place horizontal bars on 6-inch centers and vertical bars on 12-inch centers.
2. Curb shape shown for illustration only. Actual curb shape and dimensions are shown in the plans.
3. See Standard 604-6 for Frame and Grate Details.



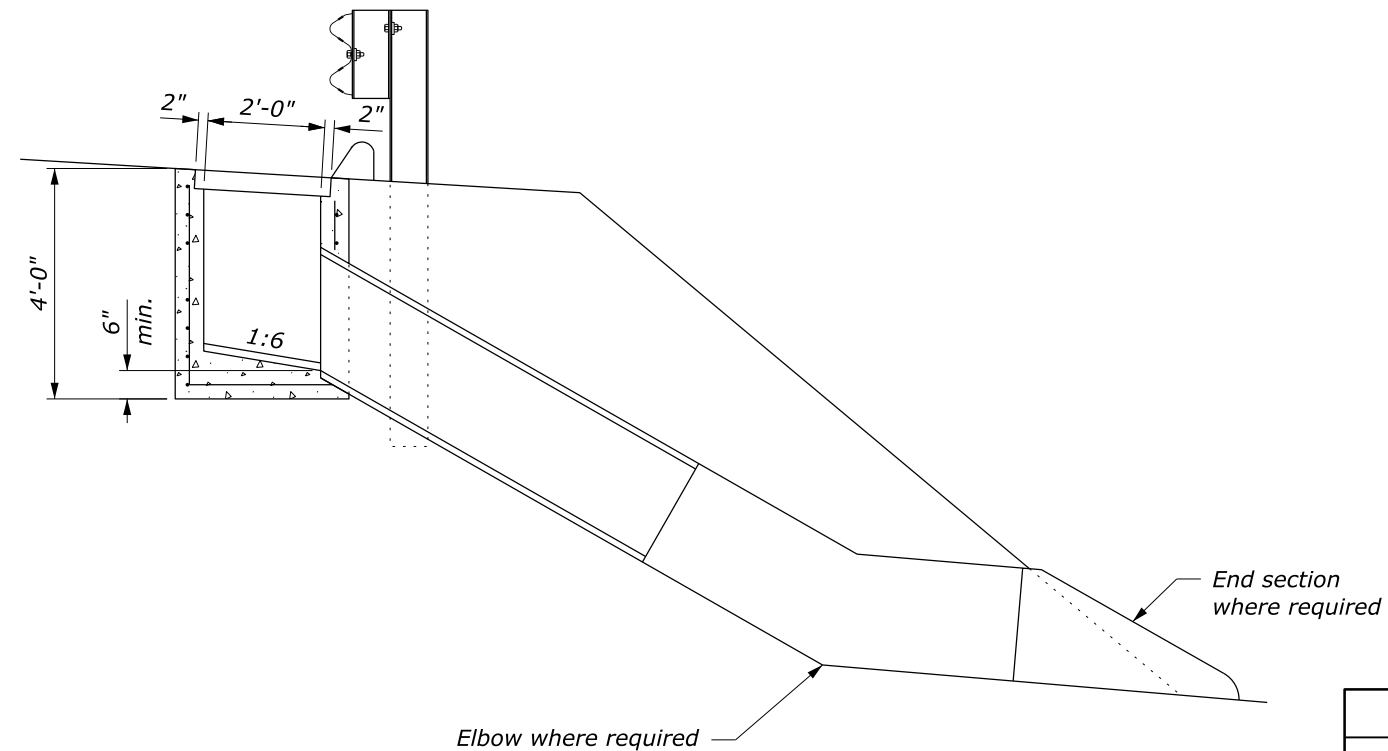
DETAIL A



PLAN

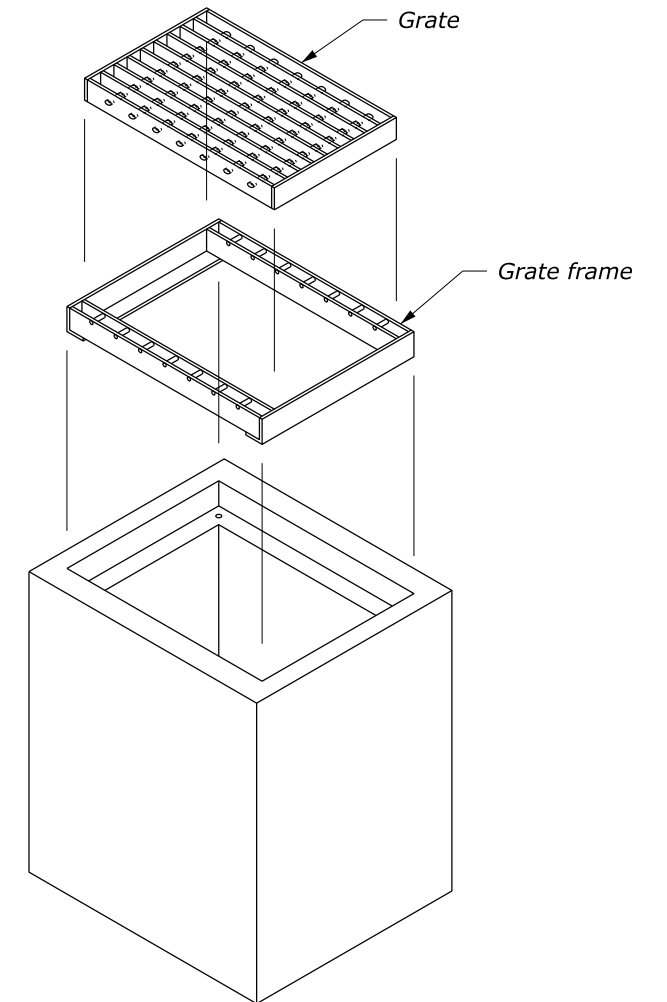


SECTION A-A



SECTION B-B

NO SCALE



ISOMETRIC VIEW

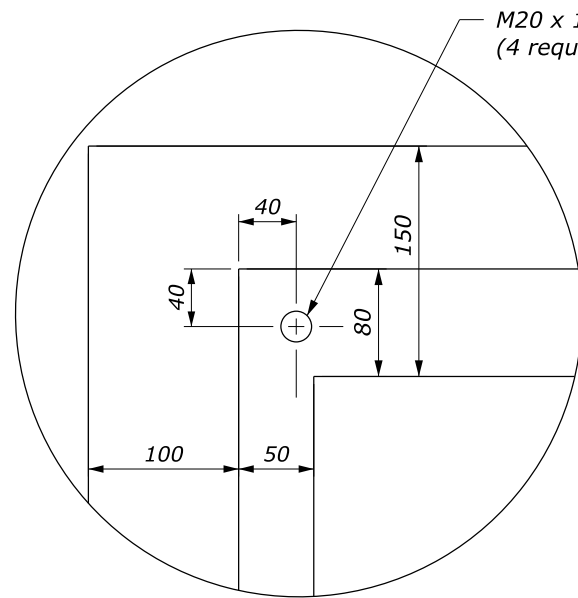
U.S. DEPARTMENT OF TRANSPORTATION, FHWA
OFFICE OF FEDERAL LANDS HIGHWAY

**INLET
TYPE 5A**

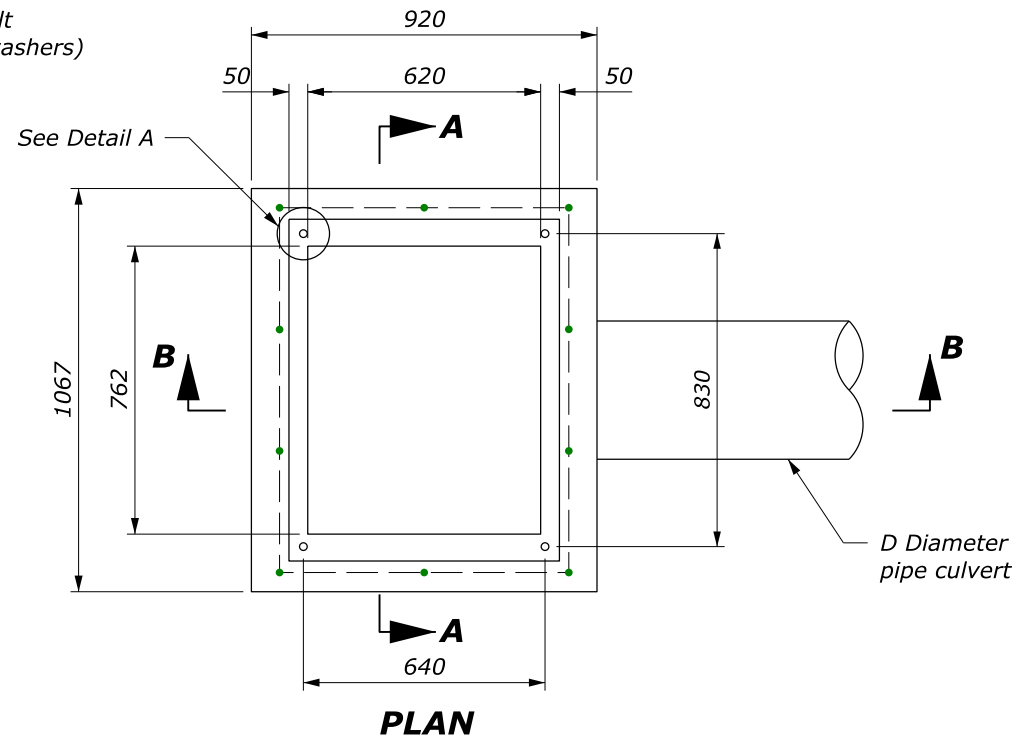
FLH STANDARD
604-5

SPECIFICATION
FP-24, FP-14

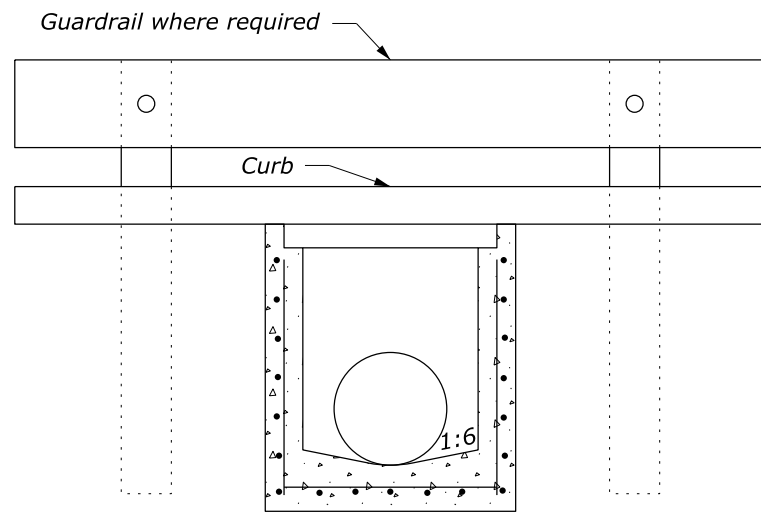
APPROVED FOR USE
1/2024



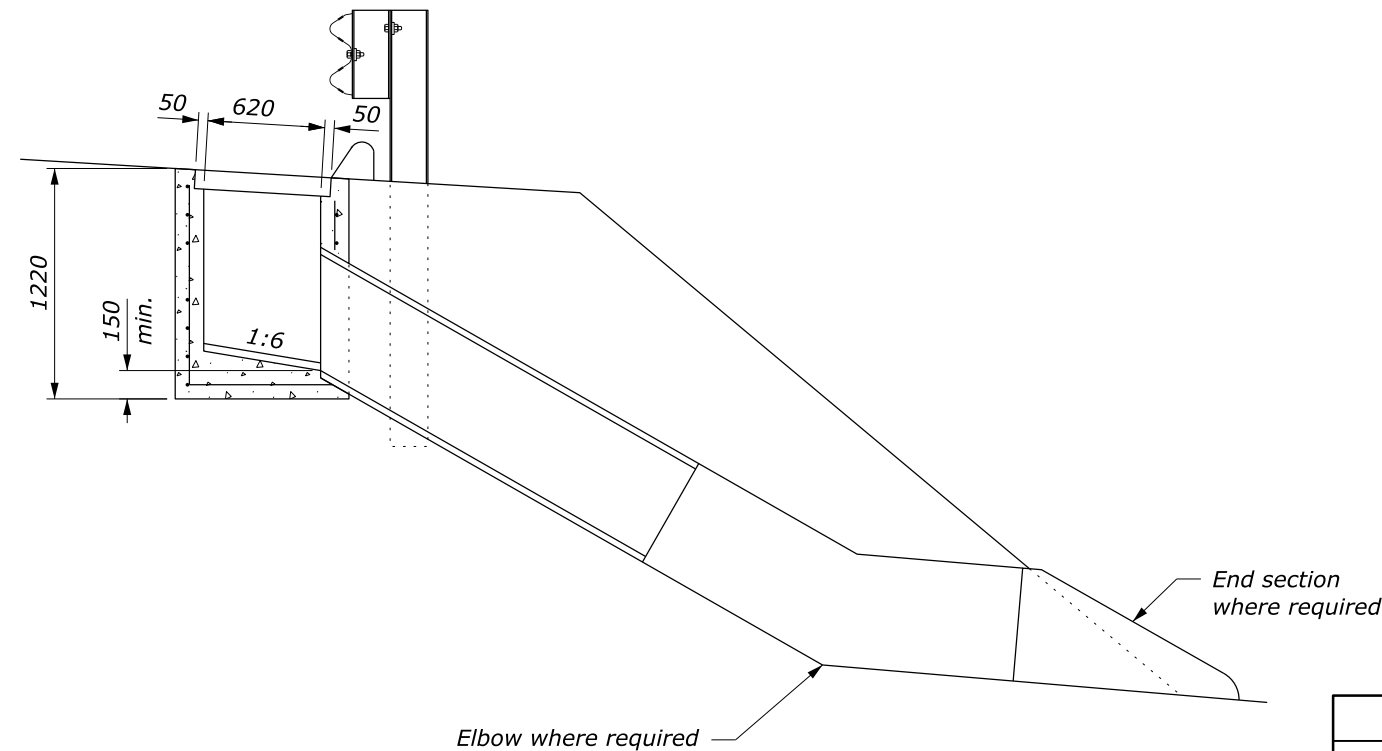
DETAIL A



PLAN



SECTION A-A

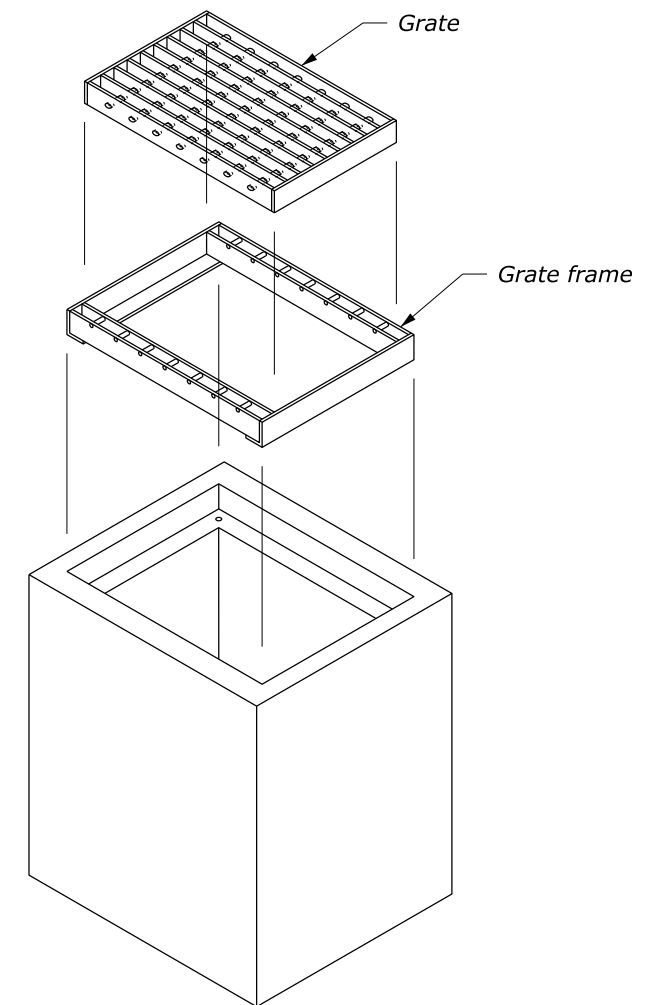


SECTION B-B

NO SCALE

NOTE:

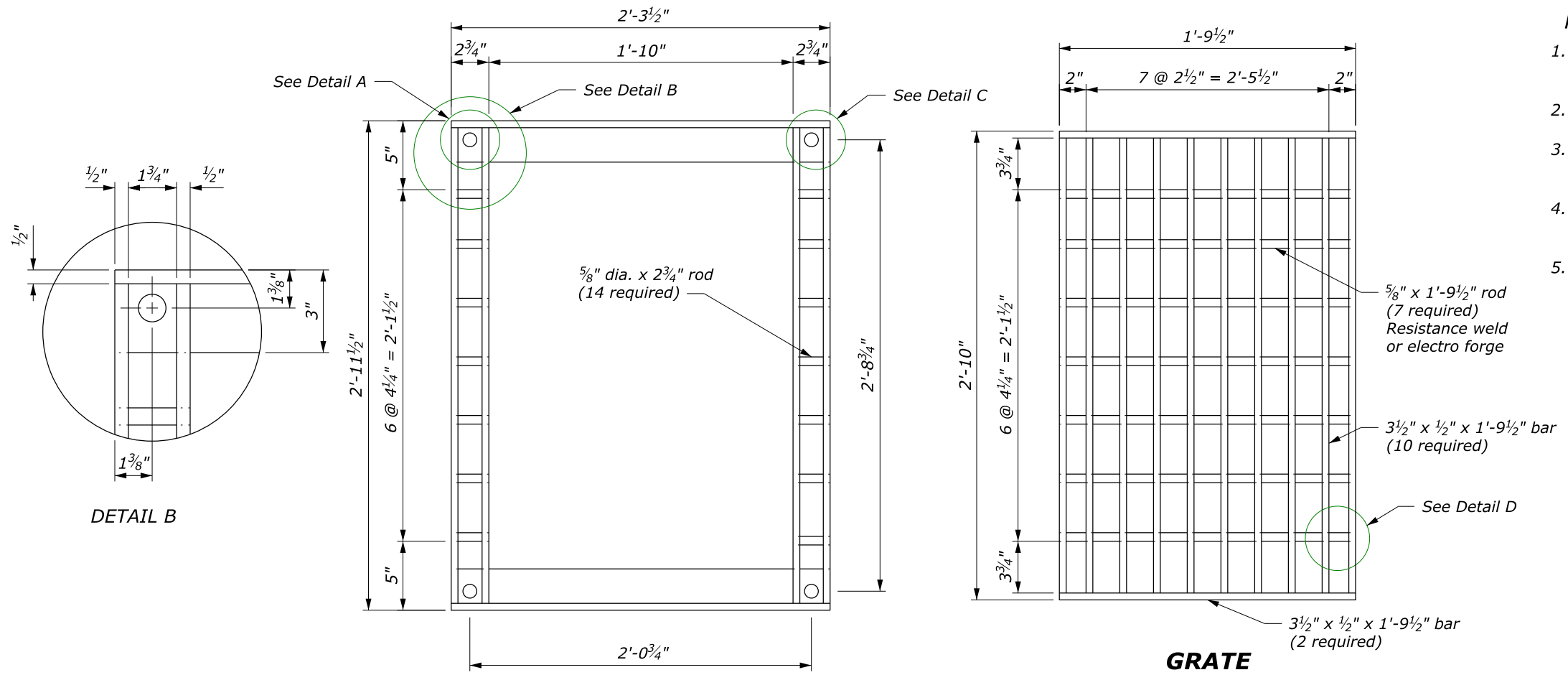
1. All reinforcing bars are #16 placed a minimum 40 mm clear from face of concrete. In floors, place bars on 150 mm centers each way. In walls, place horizontal bars on 150 mm centers and vertical bars on 300 mm centers.
2. Curb shape shown for illustration only. Actual curb shape and dimensions are shown in the plans.
3. See Standard M604-6 for Frame and Grate Details.



ISOMETRIC VIEW

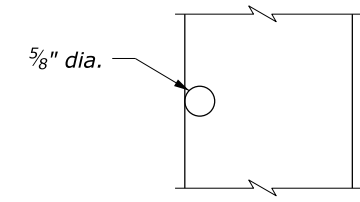
This drawing contains **Metric** units of measure. Dimensions without units are millimeters.

<p>U.S. DEPARTMENT OF TRANSPORTATION, FHWA OFFICE OF FEDERAL LANDS HIGHWAY</p> <p>INLET TYPE 5A</p>	<p>FLH STANDARD M604-5</p>
	<p>SPECIFICATION FP-24, FP-14</p>
	<p>APPROVED FOR USE 1/2024</p>

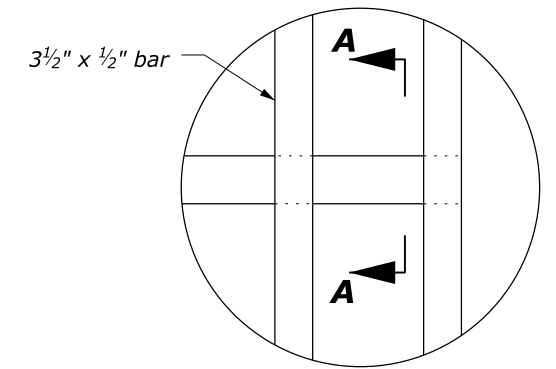


NOTE:

1. Hot dip galvanize all metal parts for frame and grate after fabrication.
2. Fabricate frame and grate from structural steel.
3. Attach frame to inlet using four 3/4" x 8" anchor bolts with nuts.
4. Cut holes in 3 1/2" x 1/2" bars as required to place 5/8-inch diameter rods.
5. Spot weld 5/8-inch diameter rods for frame and grate to 3 1/2" x 1/2" bars.



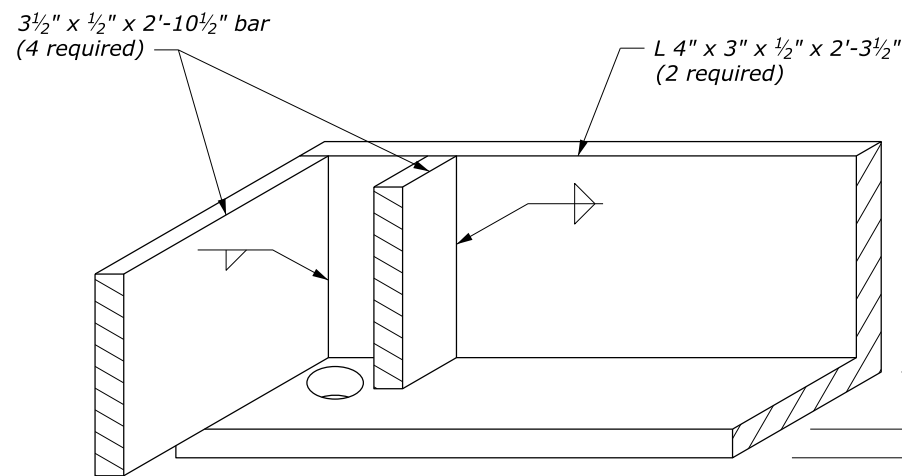
SECTION A-A



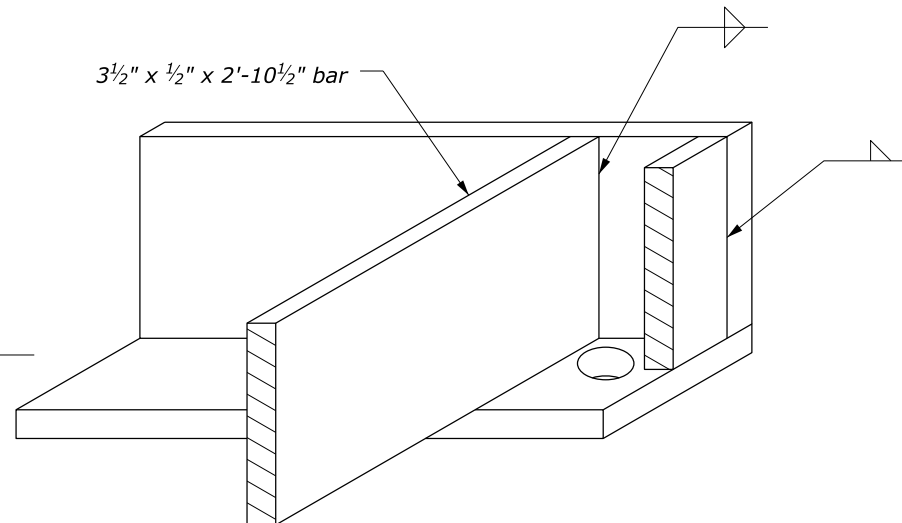
DETAIL D

GRATE FRAME

GRATE



DETAIL A
(OBLIQUE)



DETAIL C
(OBLIQUE)

NO SCALE

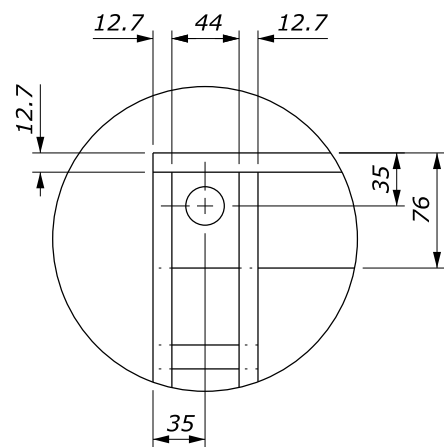
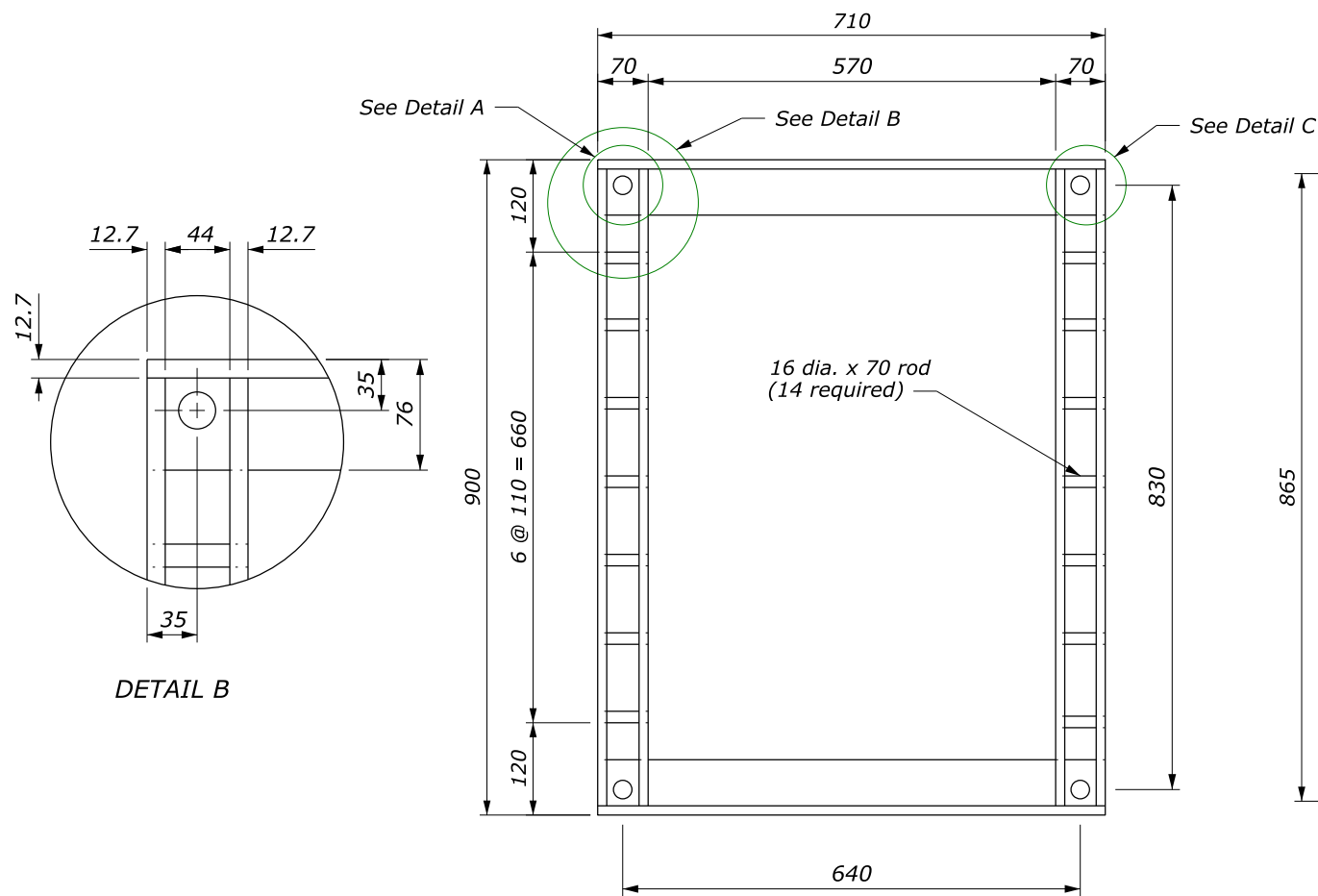
U.S. DEPARTMENT OF TRANSPORTATION, FHWA
OFFICE OF FEDERAL LANDS HIGHWAY

**FRAME AND GRATE,
TYPE 5A**

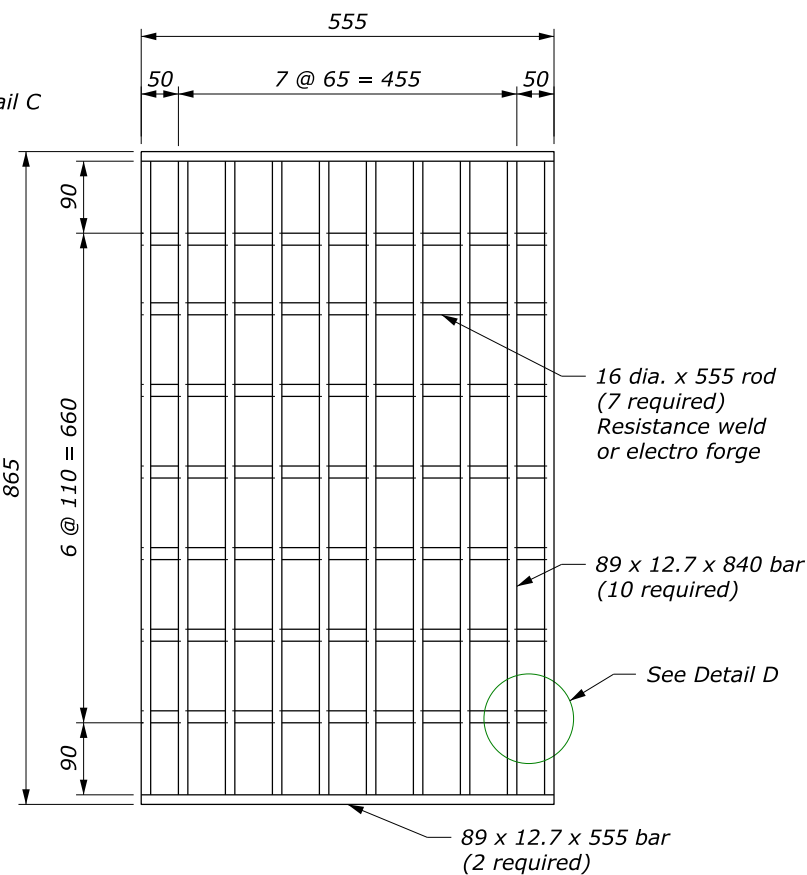
FLH STANDARD
604-6

SPECIFICATION
FP-24, FP-14

APPROVED FOR USE
1/2024



DETAIL B

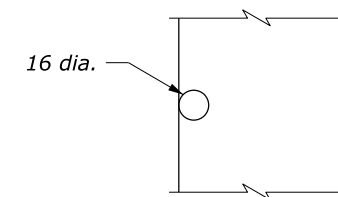


GRATE

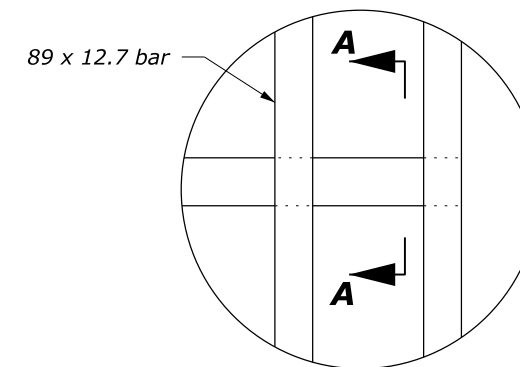


GRATE FRAME

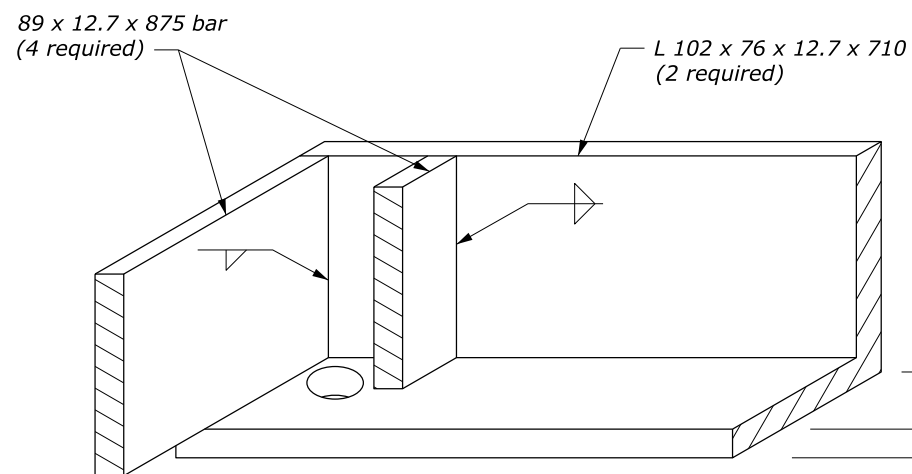
- NOTE:**
- Hot dip galvanize all metal parts for frame and grate after fabrication.
 - Fabricate frame and grate from structural steel.
 - Attach frame to inlet using four M20 x 120 x 200 mm anchor bolts with nuts.
 - Cut holes in 89 x 12.7 mm bar as required to place 16 mm diameter rods.
 - Spot weld 16 mm diameter rods for frame and grate to 89 x 12.7 mm bars.
 - Furnish hardware in the metric sizes shown. Equivalent U.S. Customary sizes may be used when metric sizes are unavailable.



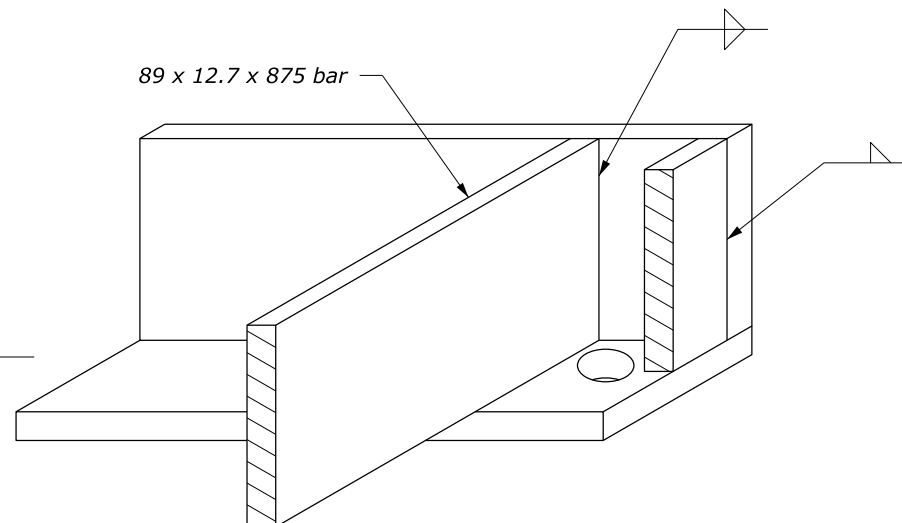
SECTION A-A



DETAIL D



DETAIL A (OBLIQUE)



DETAIL C (OBLIQUE)

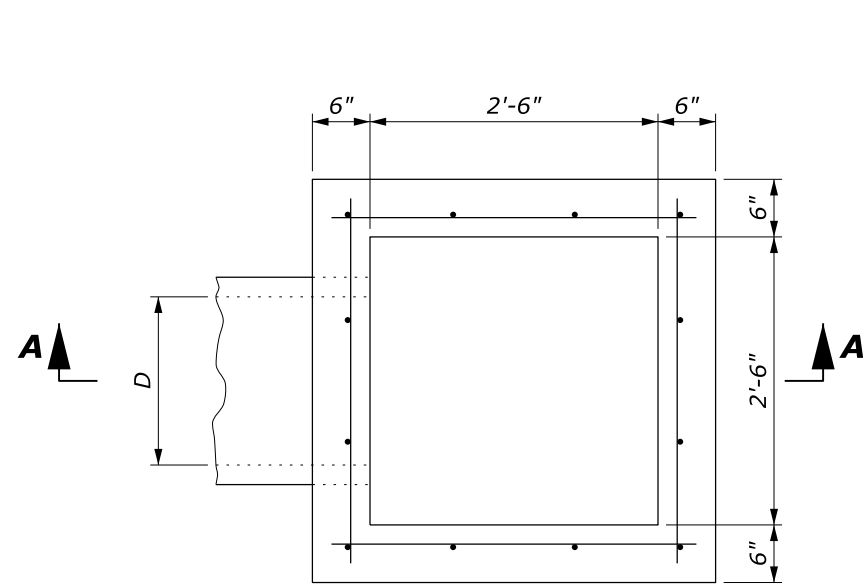
This drawing contains **Metric** units of measure. Dimensions without units are millimeters.

NO SCALE

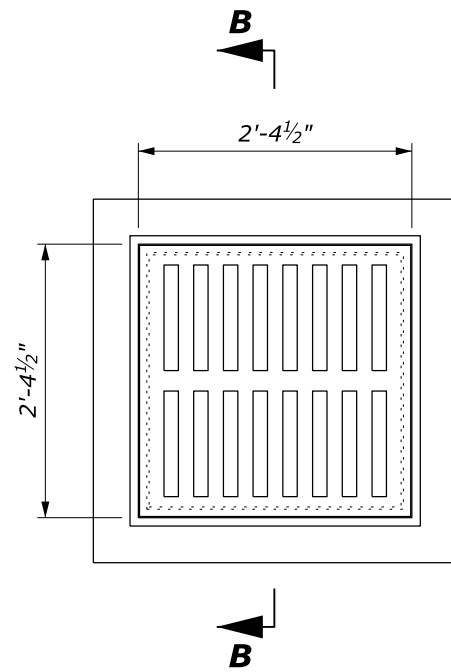
U.S. DEPARTMENT OF TRANSPORTATION, FHWA OFFICE OF FEDERAL LANDS HIGHWAY	FLH STANDARD M604-6
FRAME AND GRATE, TYPE 5A	SPECIFICATION FP-24, FP-14
	APPROVED FOR USE 1/2024

NOTE:

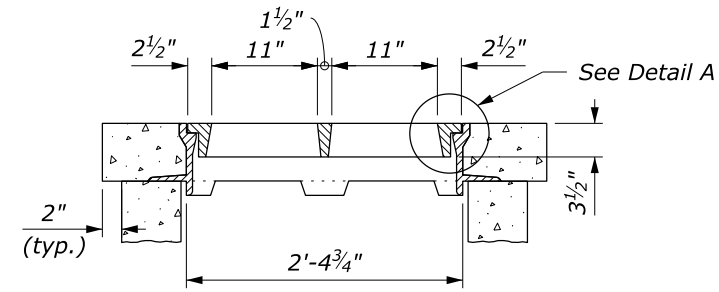
1. Construct inlets parallel to the roadway centerline and grade. For pipes on skew, adapt inlets as directed.
2. For frames and gratings, minor variations in design and dimensions are permitted to allow manufacturer's standards.



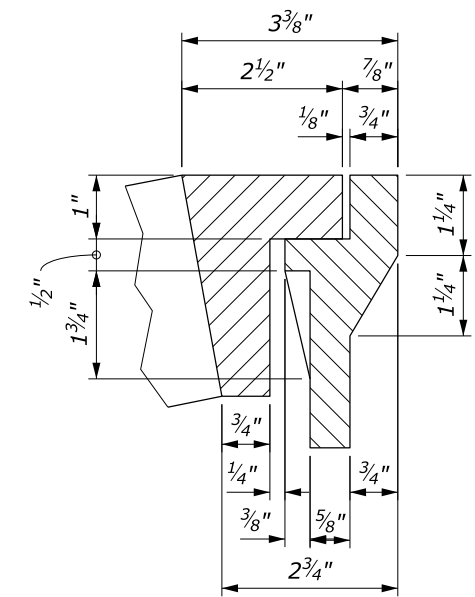
PLAN



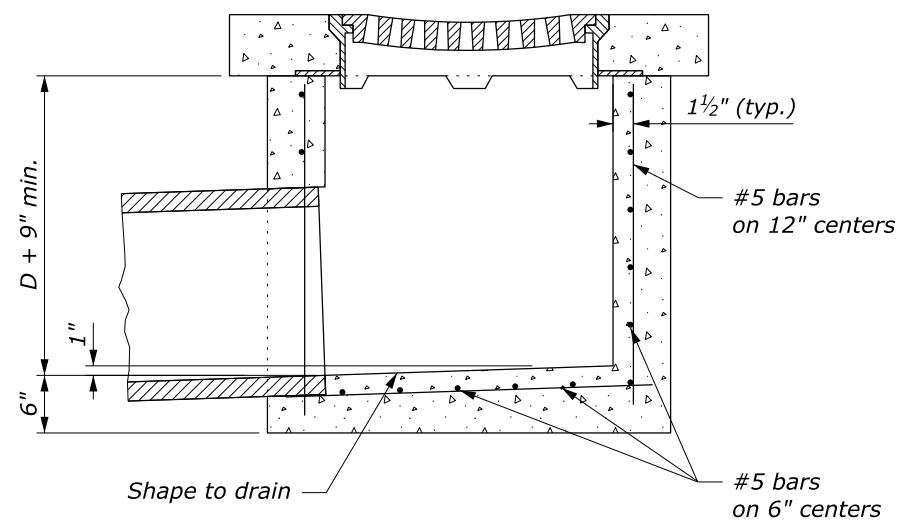
B



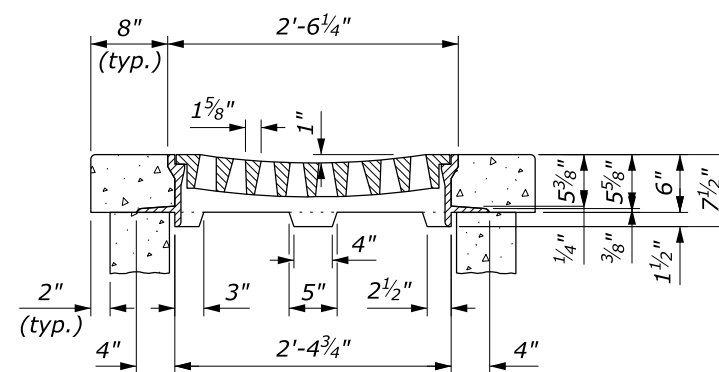
SECTION B-B



DETAIL A



SECTION A-A
TYPE 6B INLET



Gray Iron Castings, AASHTO M 105

**METAL FRAMES AND GRATINGS
TYPE 6B**

NO SCALE

U.S. DEPARTMENT OF TRANSPORTATION, FHWA
OFFICE OF FEDERAL LANDS HIGHWAY

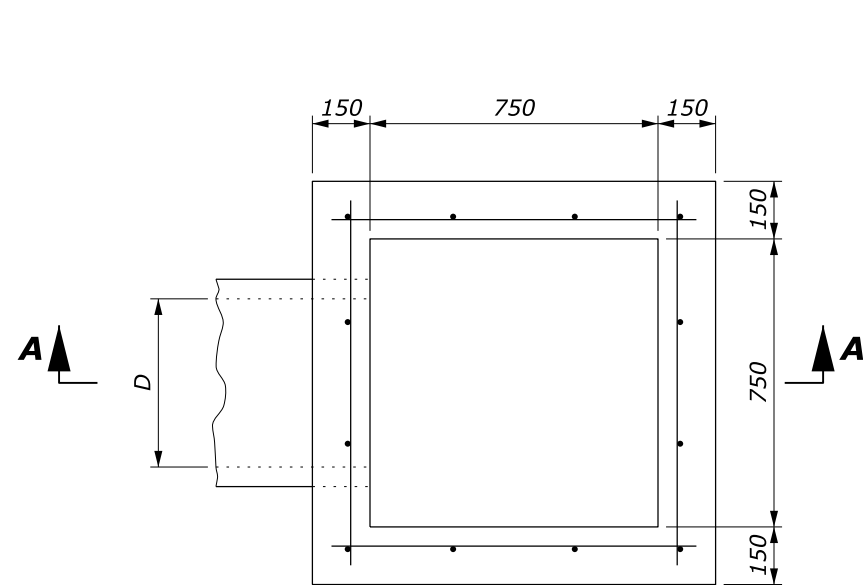
FLH STANDARD
604-7

**INLET
TYPE 6B**

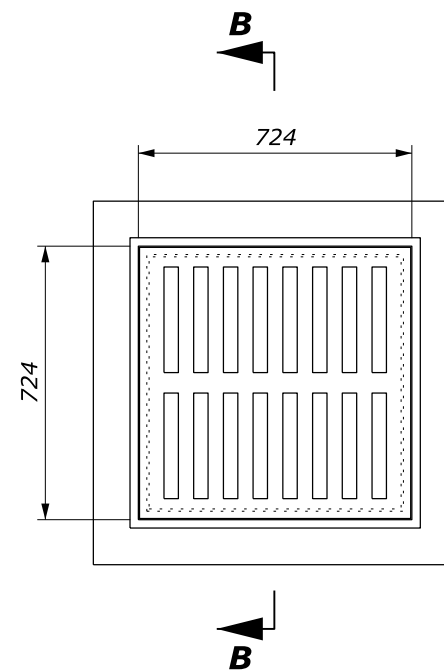
SPECIFICATION
FP-24, FP-14
APPROVED FOR USE
1/2024

NOTE:

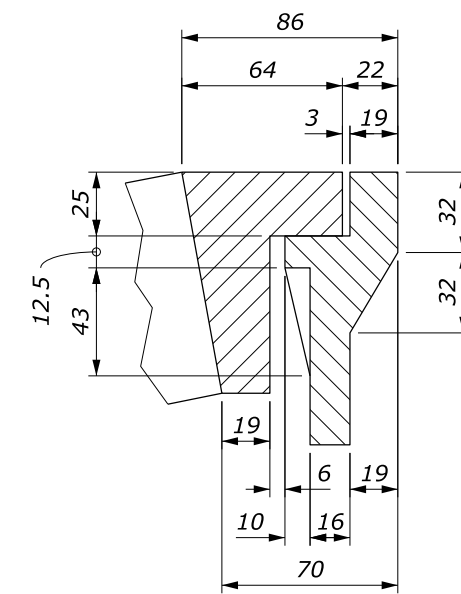
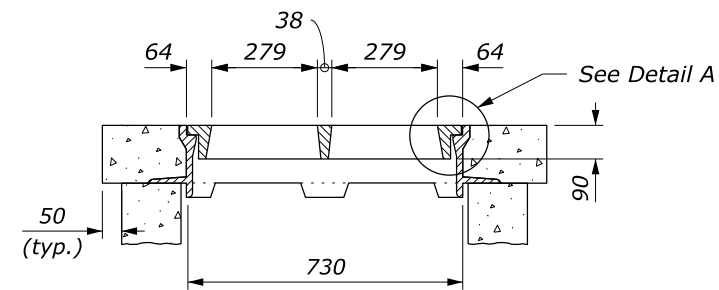
1. Construct inlets parallel to the roadway centerline and grade. For pipes on skew, adapt inlets as directed.
2. For frames and gratings, minor variations in design and dimensions are permitted to allow manufacturer's standards.



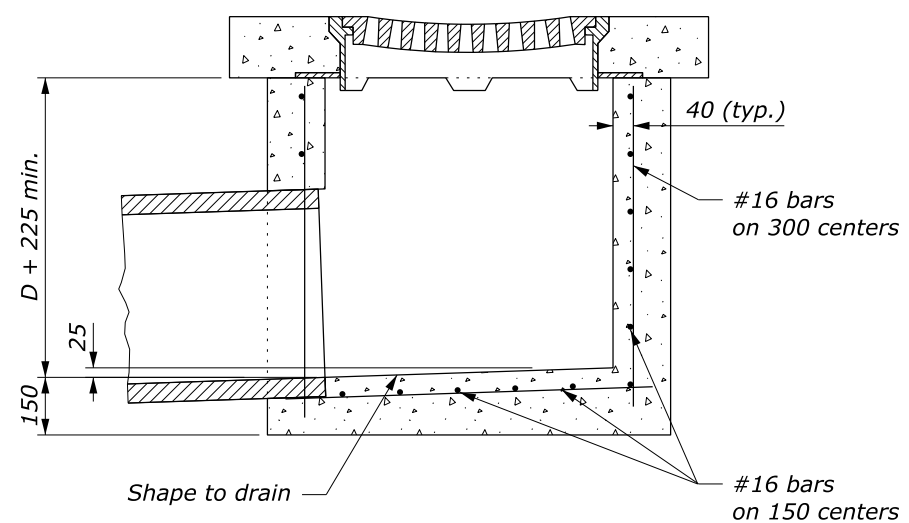
PLAN



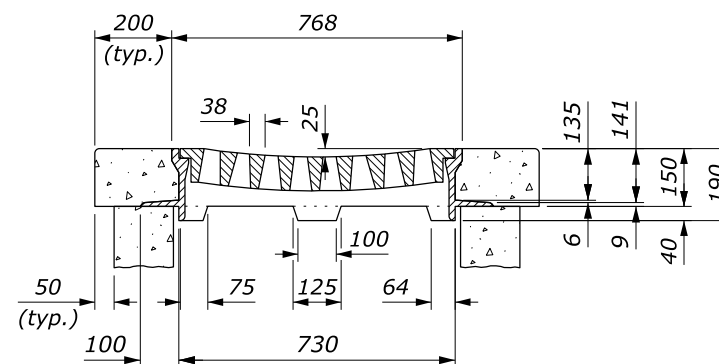
SECTION B-B



DETAIL A



SECTION A-A
TYPE 6B INLET



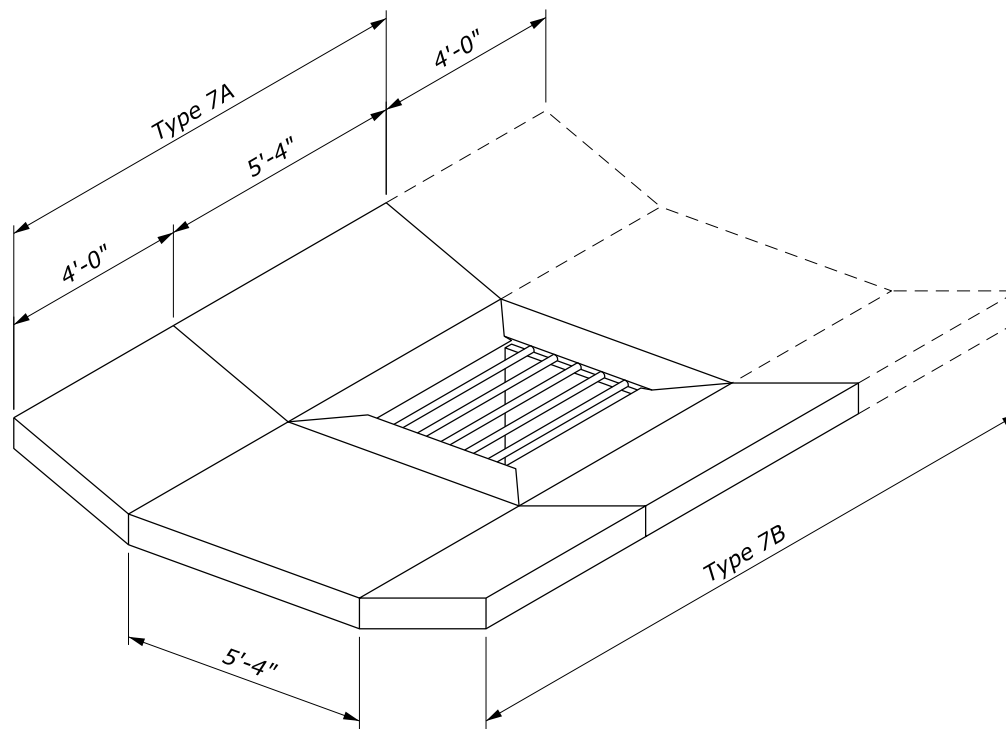
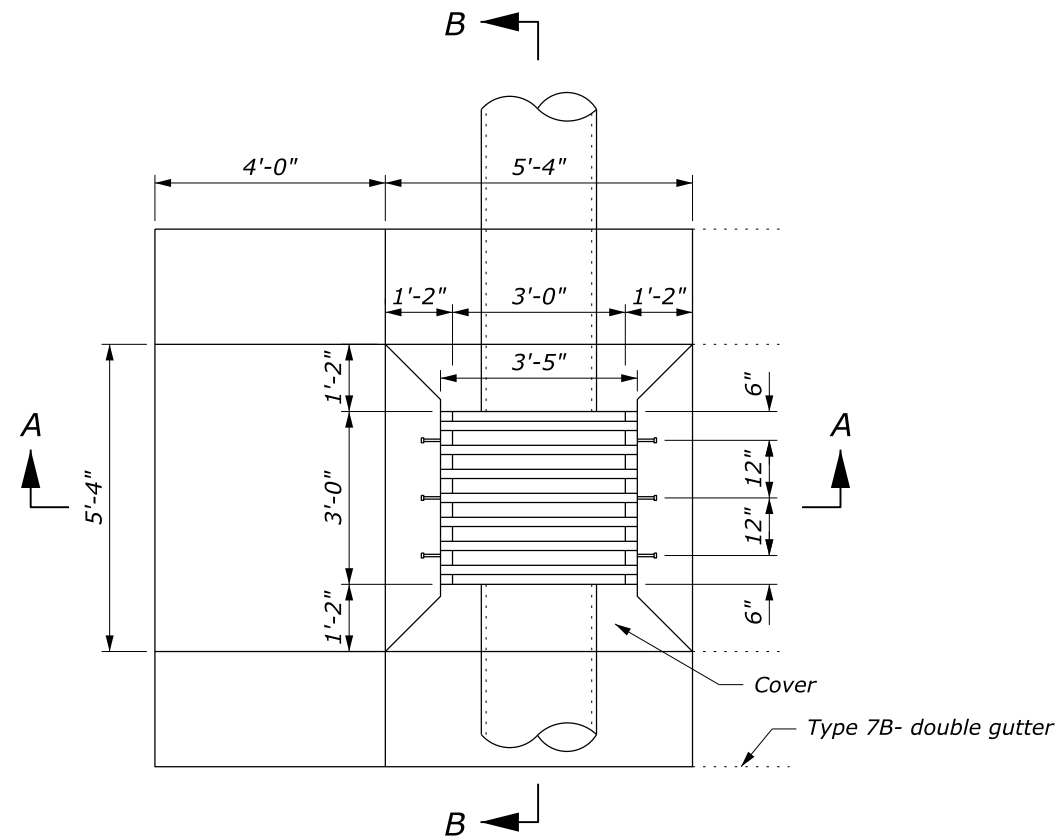
Gray Iron Castings, AASHTO M 105

**METAL FRAMES AND GRATINGS
TYPE 6B**

This drawing contains **Metric** units of measure. Dimensions without units are millimeters.

NO SCALE

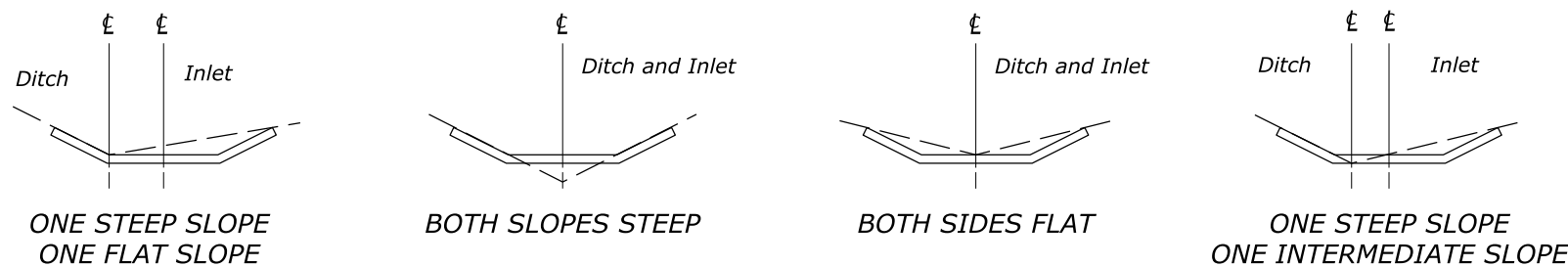
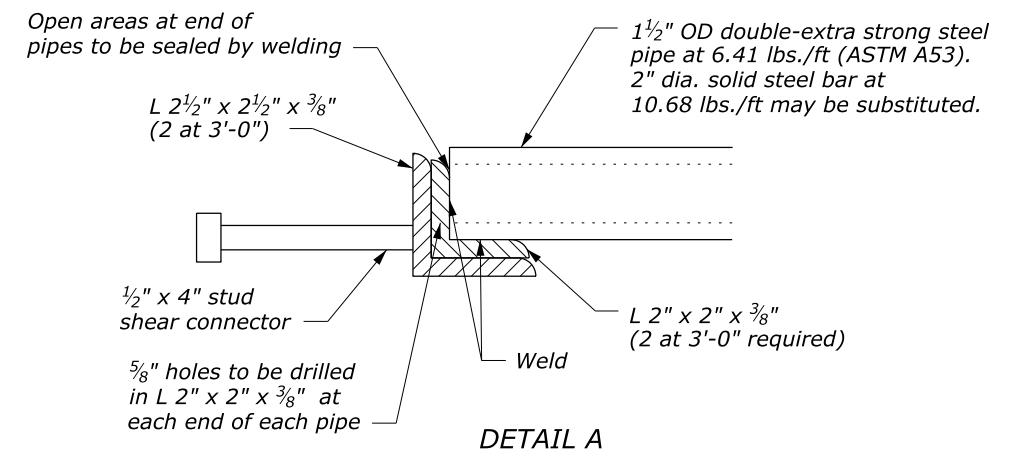
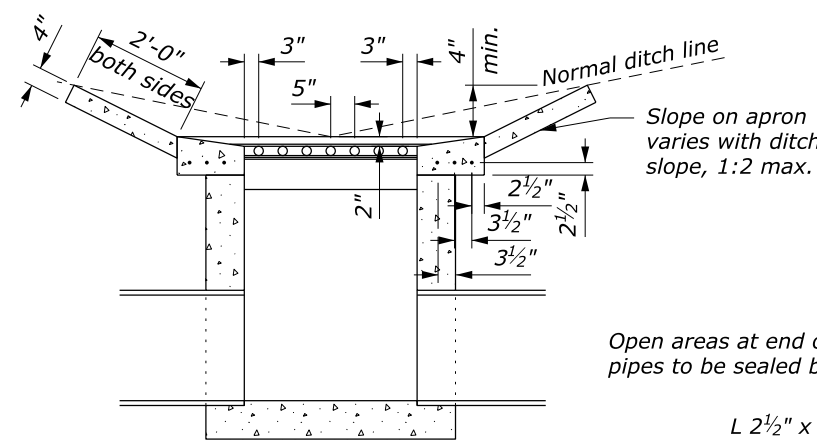
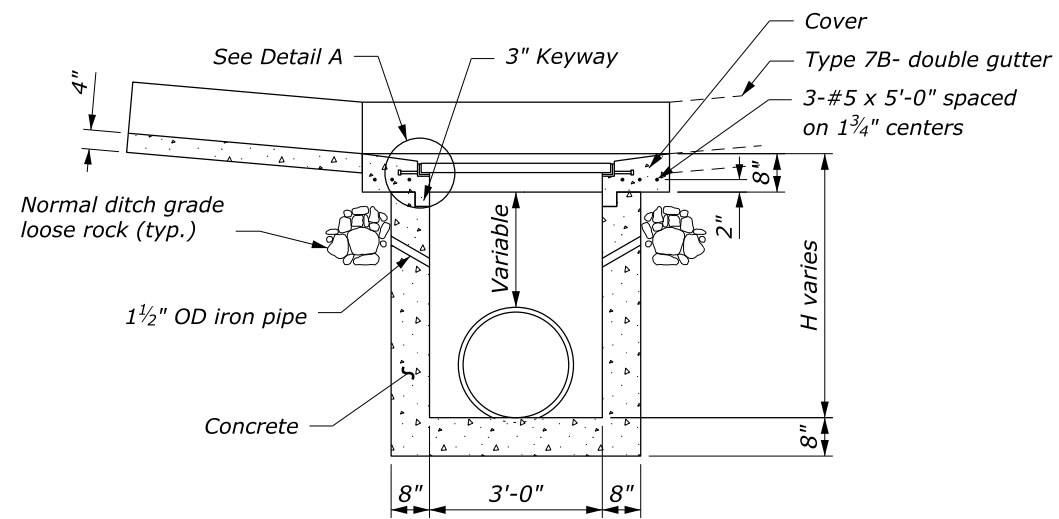
U.S. DEPARTMENT OF TRANSPORTATION, FHWA OFFICE OF FEDERAL LANDS HIGHWAY	FLH STANDARD M604-7
INLET TYPE 6B	SPECIFICATION FP-24, FP-14
	APPROVED FOR USE 1/2024



NOTE:

1. Type 7A has a single gutter when inlet is on a grade.
2. Type 7B has a double gutter when inlet is in a sag between two grades.
3. Warp ditch to tie smoothly into inlet gutter.
4. Ensure outside dimensions of grate are 3'-4" x 2'-11³/₄".
5. Maximum depth (H) is 12'-8".
6. All reinforcing bars are #5 placed a minimum 1¹/₂-inch clear from face of concrete. In floors, place bars on 6-inch centers each way. In walls, place horizontal bars on 6-inch centers and vertical bars on 12-inch centers.
7. Galvanize grate after fabrication in accordance with AASHTO M 111.
8. Alternate methods of anchoring angle iron will be acceptable if approved.

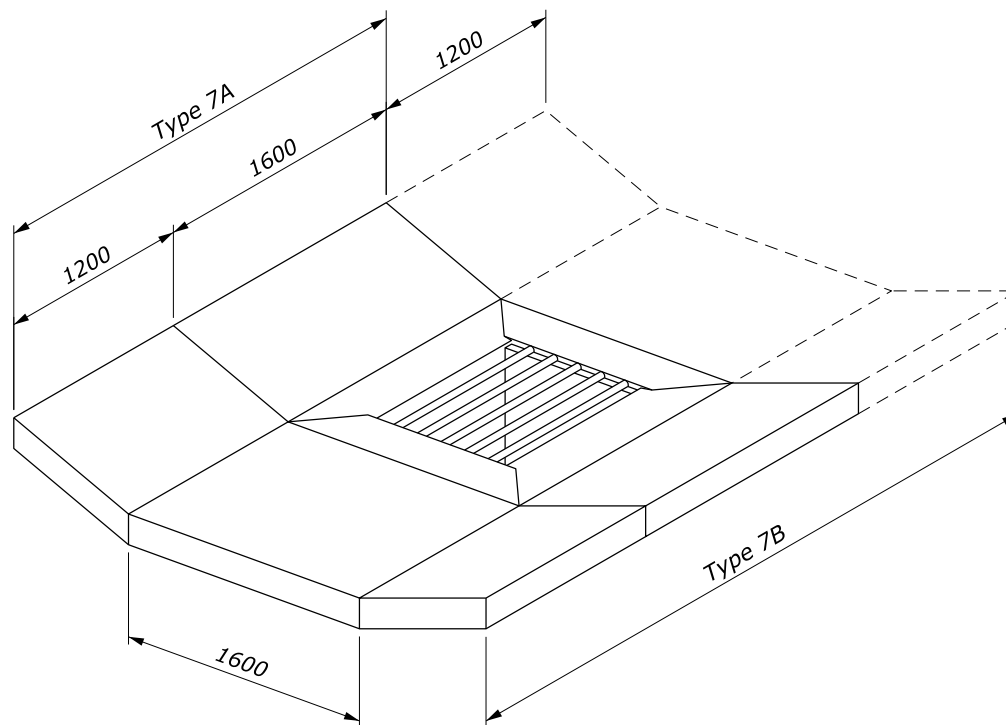
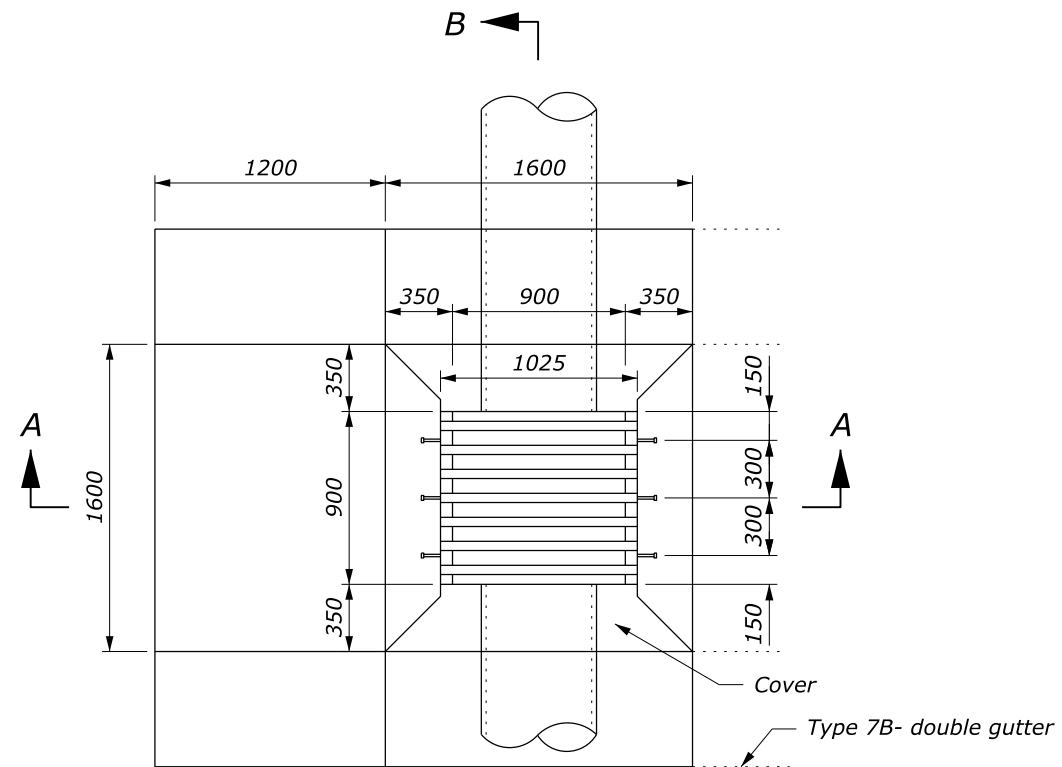
APPROXIMATE QUANTITIES						
Pipe size	12"	15"	18"	24"	30"	36"
Minimum Depth (H)	2'-0"	2'-3 ¹ / ₄ "	2'-6 ¹ / ₂ "	3'-1"	3'-7 ¹ / ₂ "	4'-2"
Inlet concrete for minimum depth, CUYD	0.947	1.045	1.143	1.339	1.535	1.731
Additional inlet concrete	0.362 cuyd for each additional foot of depth (H)					
Gutter concrete	Type 7A: 0.724 cuyd Type 7B: 1.185 cuyd					
Cover concrete (not included above)	0.413 cuyd					
Cover reinforcing steel	63 lb.					



TYPICAL GUTTER PLACEMENT

NO SCALE

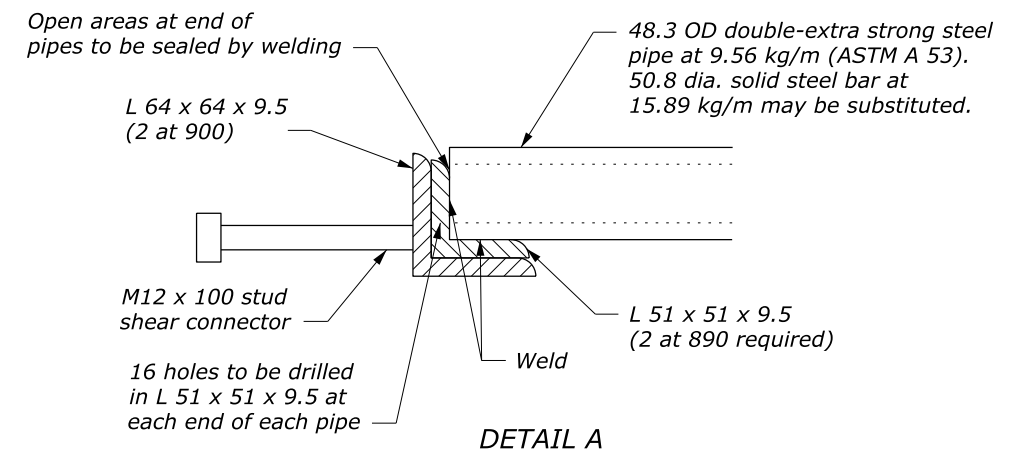
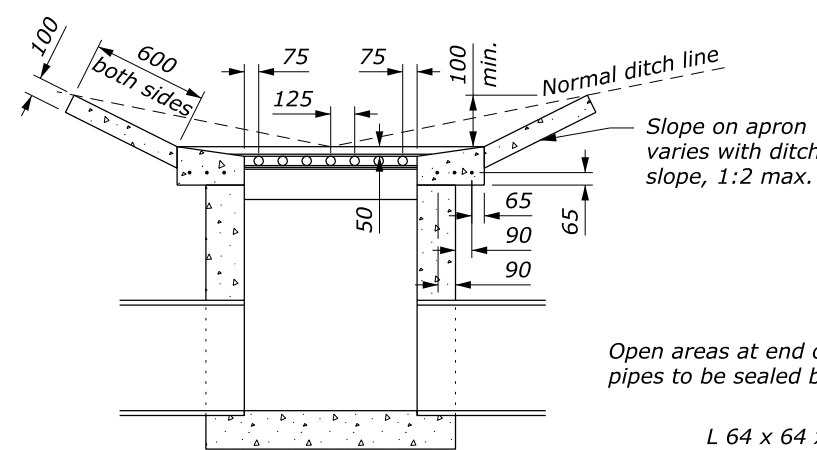
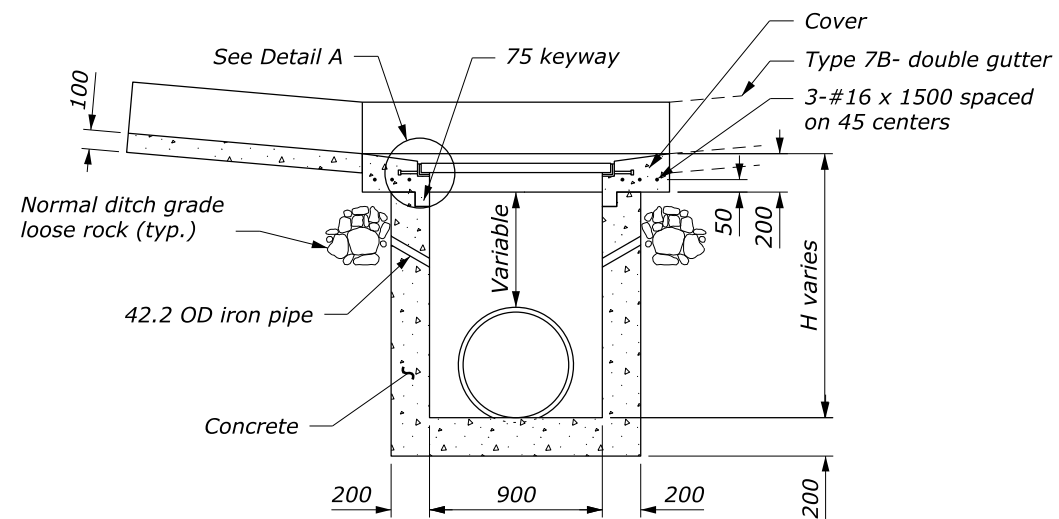
U.S. DEPARTMENT OF TRANSPORTATION, FHWA OFFICE OF FEDERAL LANDS HIGHWAY	FLH STANDARD 604-8
INLET TYPE 7A AND 7B FOR 12" TO 36" CULVERT	SPECIFICATION FP-24, FP-14 APPROVED FOR USE 1/2024



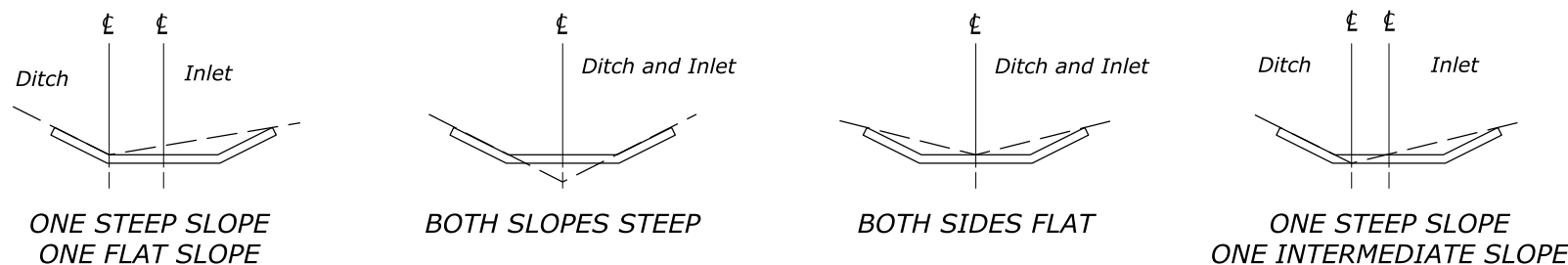
NOTE:

1. Type 7A has a single gutter when inlet is on a grade.
2. Type 7B has a double gutter when inlet is in a sag between two grades.
3. Warp ditch to tie smoothly into inlet gutter.
4. Ensure outside dimensions of grate are 1000 x 890 mm.
5. Maximum depth (H) is 3800 mm.
6. All reinforcing bars are #16 placed a minimum 40 mm clear from face of concrete. In floors, place bars on 150 mm centers each way. In walls, place horizontal bars on 150 mm centers and vertical bars on 300 mm centers.
7. Galvanize grate after fabrication in accordance with AASHTO M 111.
8. Alternate methods of anchoring angle iron will be acceptable if approved.

APPROXIMATE QUANTITIES						
Pipe size	300	375	450	600	750	900
Minimum Depth (H)	600	690	775	940	1100	1270
Inlet concrete for minimum depth, m ³	0.690	0.769	0.844	0.989	1.130	1.280
Additional inlet concrete	0.264 m ³ for each additional 300 mm of depth (H)					
Gutter concrete	Type 7A: 0.528 m ³ Type 7B: 0.864 m ³					
Cover concrete (not included above)	0.301 m ³					
Cover reinforcing steel	28.5 kg					



This drawing contains **Metric** units of measure. Dimensions without units are millimeters.



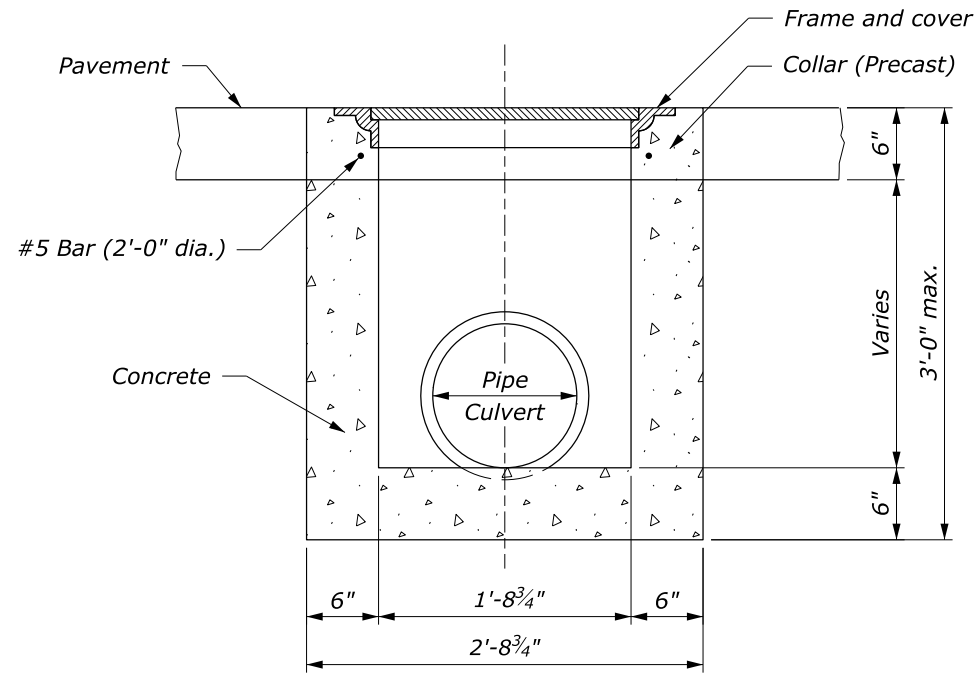
TYPICAL GUTTER PLACEMENT

NO SCALE

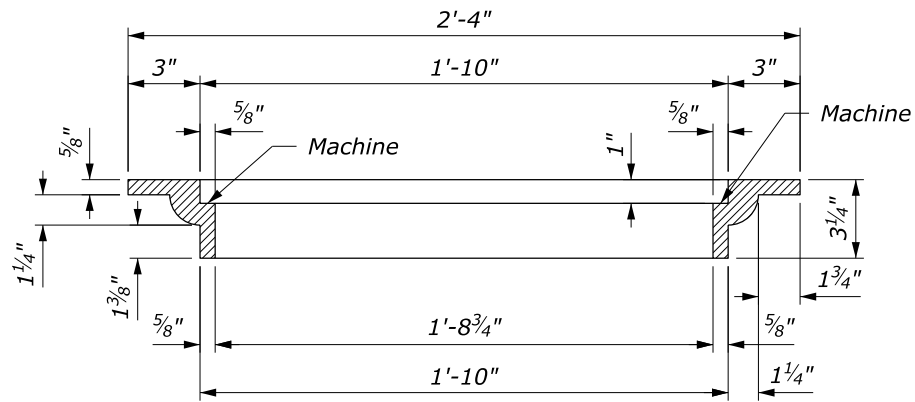
U.S. DEPARTMENT OF TRANSPORTATION, FHWA OFFICE OF FEDERAL LANDS HIGHWAY	FLH STANDARD M604-8
INLET TYPE 7A AND 7B FOR 300 TO 900 CULVERT	
SPECIFICATION FP-24/FP-14	
APPROVED FOR USE 1/2024	

NOTE:

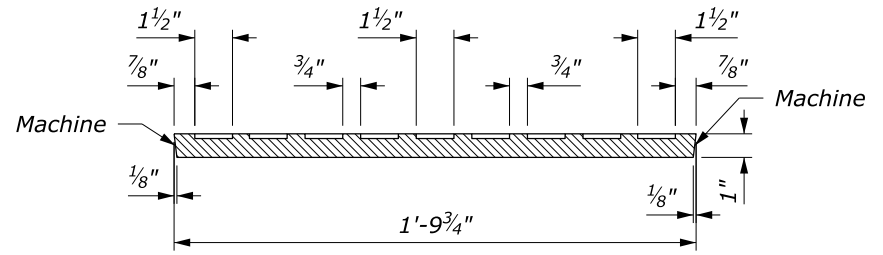
1. Frame and cover dimensions may vary slightly to allow manufacturer's standards.
2. MASS: (Approximate, cast iron)
 Frame - 86 ± 4 lb.
 Cover - 83 ± 4 lb.
3. All reinforcing bars are #5 placed a minimum 1½-inch clear from face of concrete. In floors, place bars on 6-inch centers each way. In walls, place horizontal bars on 6-inch centers and vertical bars on 12-inch centers.



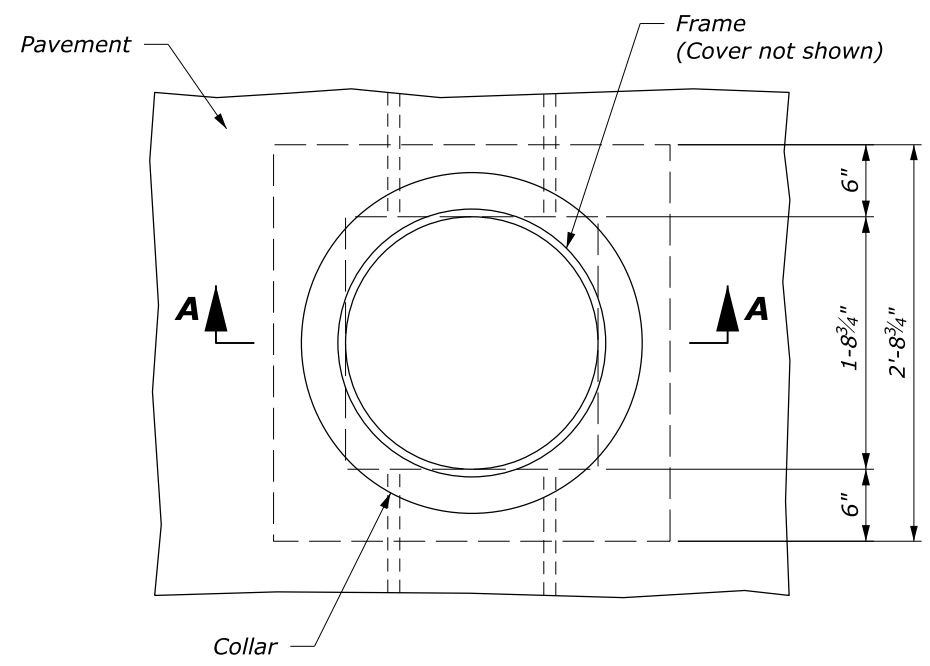
SECTION A-A



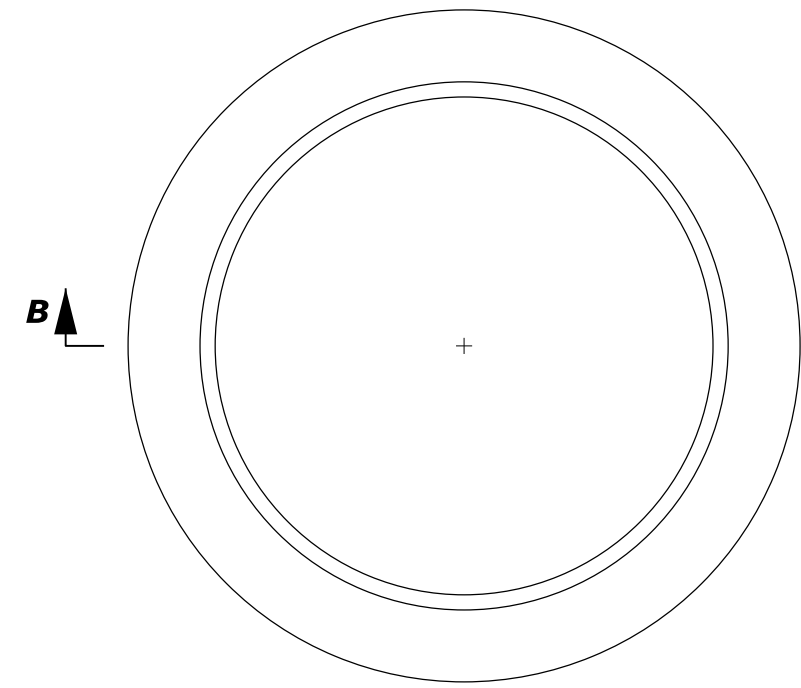
SECTION B-B



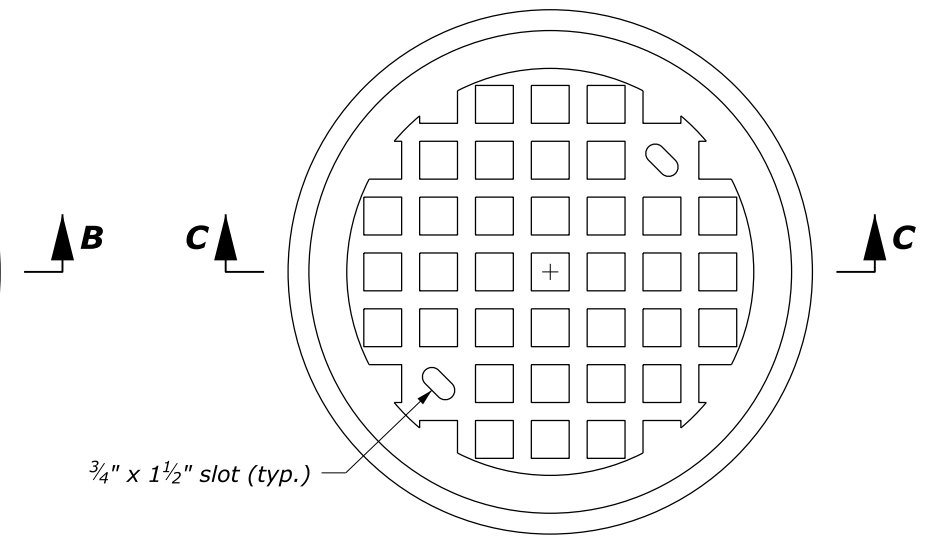
SECTION C-C



PLAN



FRAME



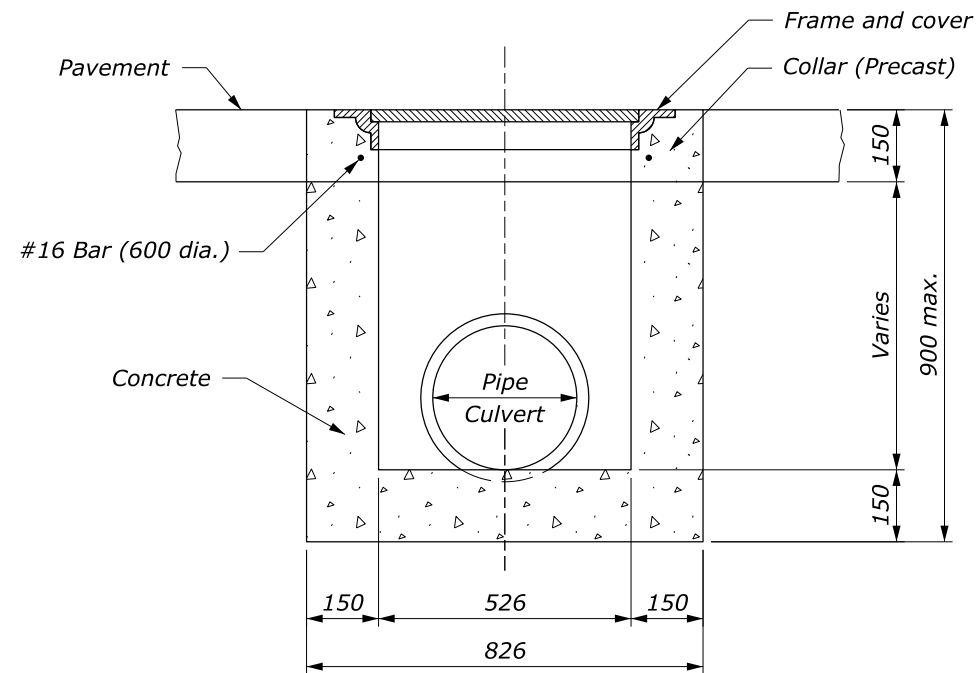
COVER

NO SCALE

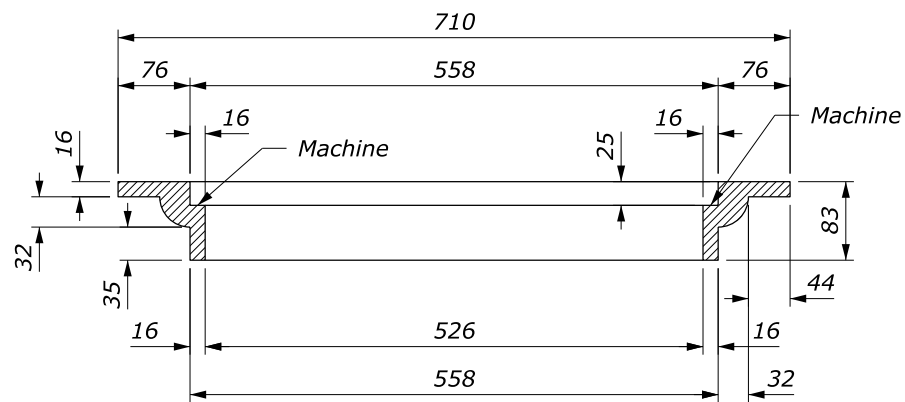
U.S. DEPARTMENT OF TRANSPORTATION, FHWA OFFICE OF FEDERAL LANDS HIGHWAY	FLH STANDARD 604-9
MANHOLE	SPECIFICATION FP-24, FP-14
	APPROVED FOR USE 1/2024

NOTE:

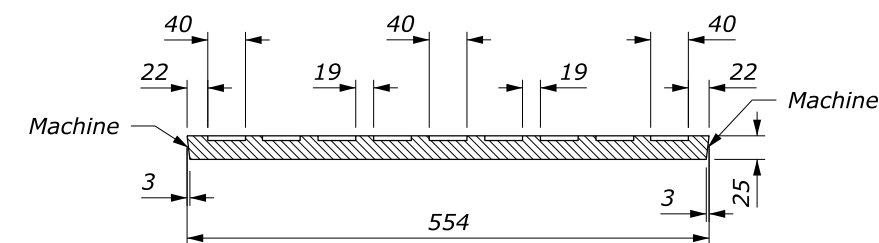
1. Frame and cover dimensions may vary slightly to allow manufacturer's standards.
2. MASS: (Approximate, cast iron)
 Frame - 39 ± 2 kg
 Cover - 38 ± 2 kg
3. All reinforcing bars are #16 placed a minimum 40 mm clear from face of concrete. In floors, place bars on 150 mm centers each way. In walls, place horizontal bars on 150 mm centers and vertical bars on 300 mm centers.



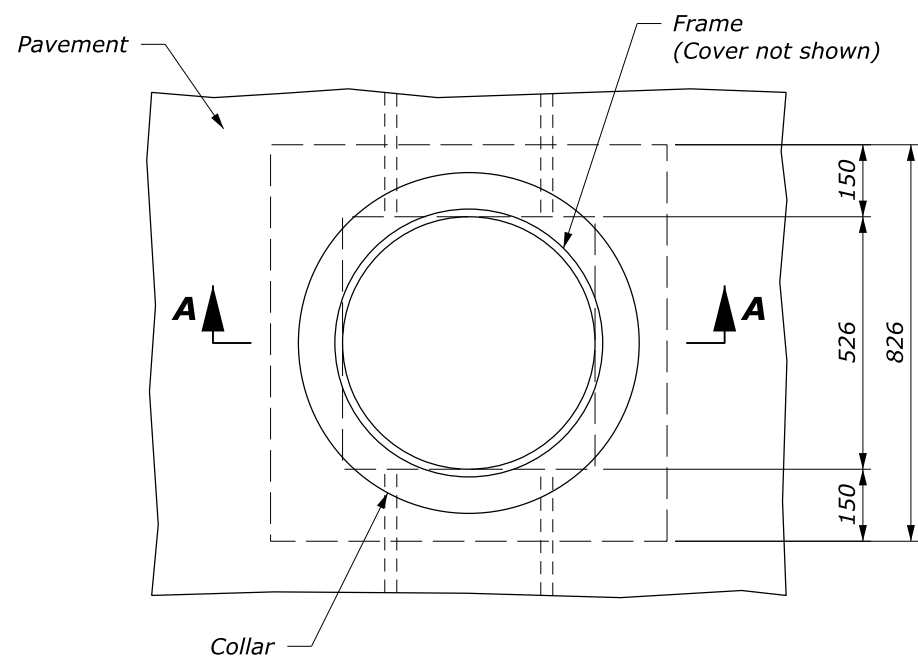
SECTION A-A



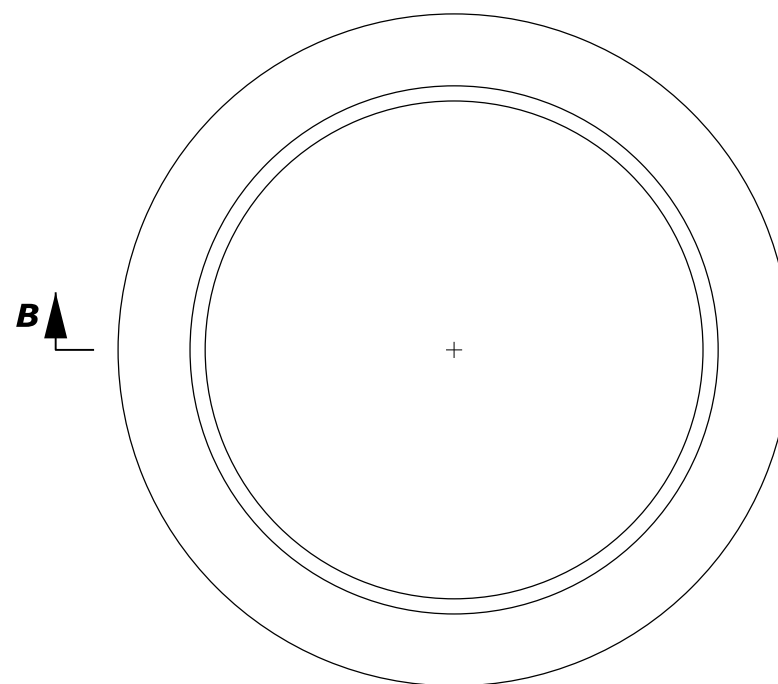
SECTION B-B



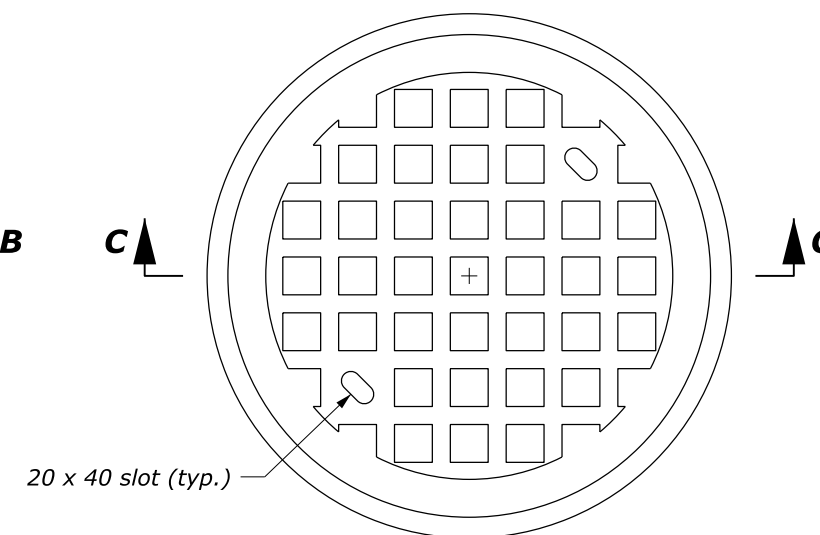
SECTION C-C



PLAN



FRAME



COVER

This drawing contains **Metric** units of measure. Dimensions without units are millimeters.

NO SCALE

U.S. DEPARTMENT OF TRANSPORTATION, FHWA OFFICE OF FEDERAL LANDS HIGHWAY	FLH STANDARD M604-9
MANHOLE	SPECIFICATION FP-24, FP-14
	APPROVED FOR USE 1/2024