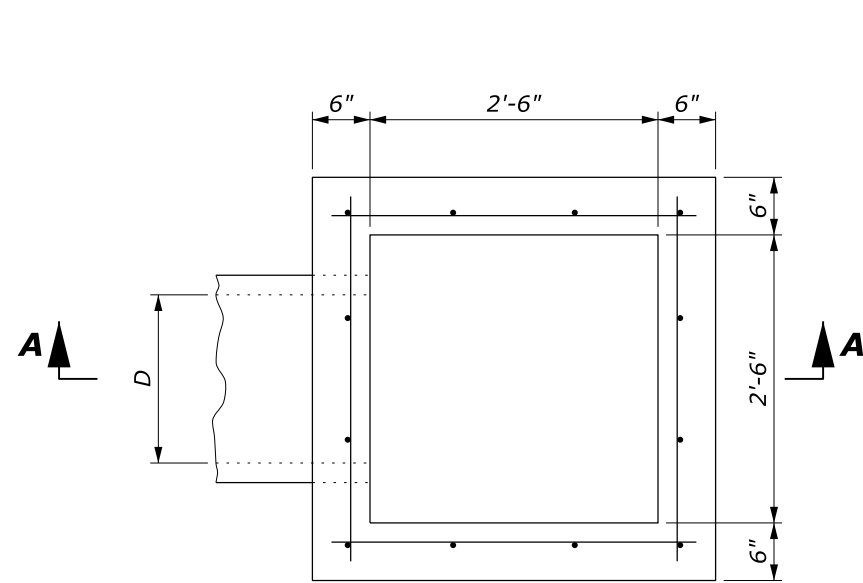
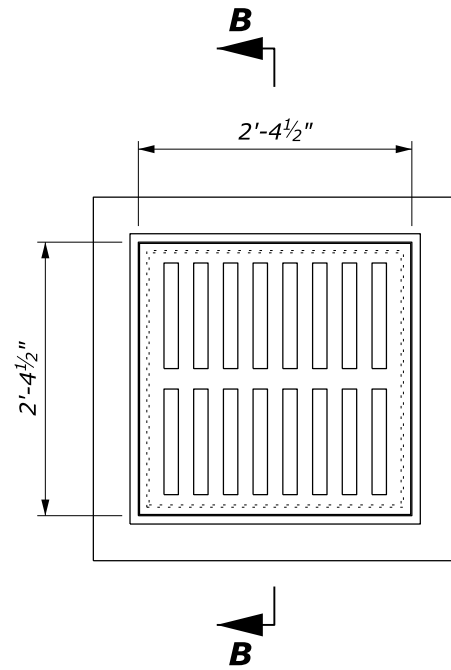


**NOTE:**

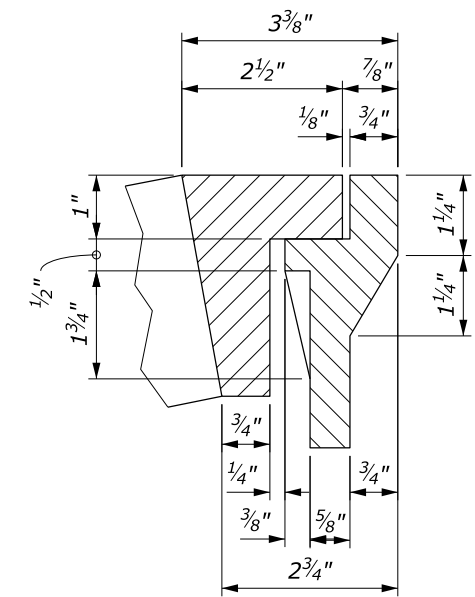
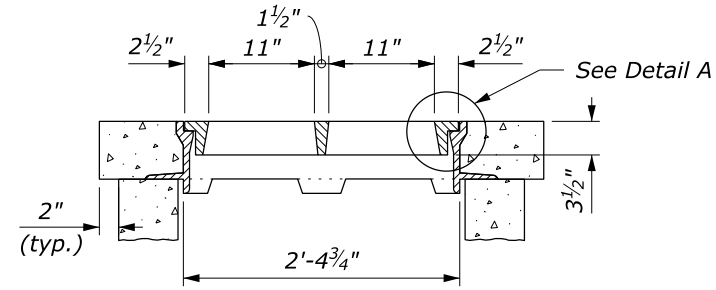
1. Construct inlets parallel to the roadway centerline and grade. For pipes on skew, adapt inlets as directed.
2. For frames and gratings, minor variations in design and dimensions are permitted to allow manufacturer's standards.



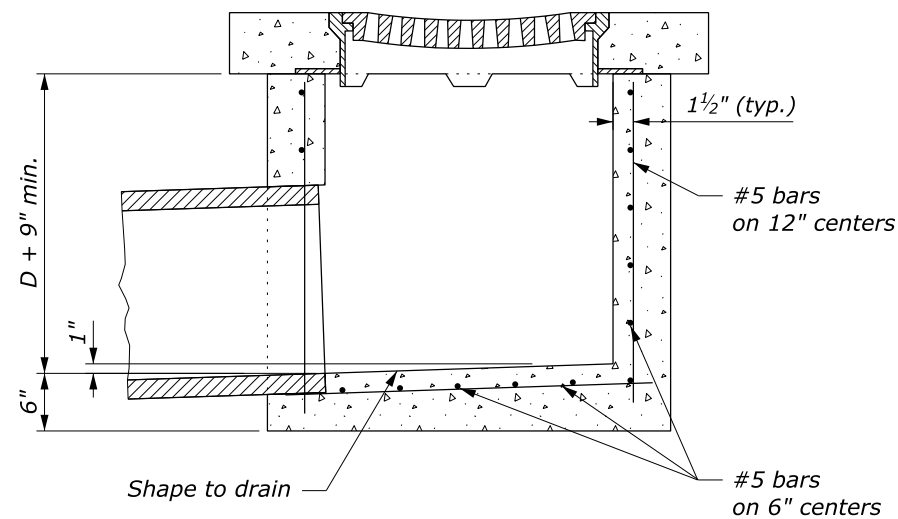
PLAN



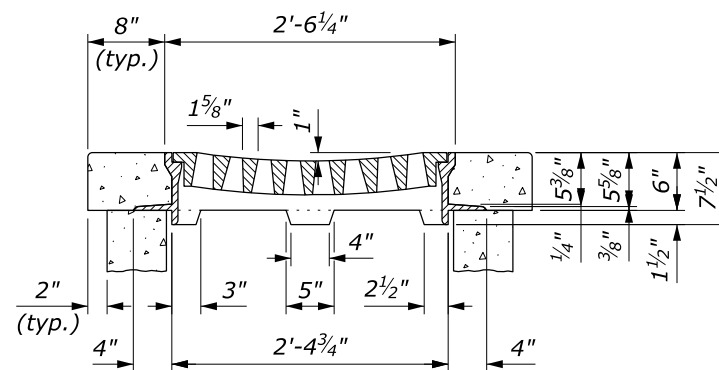
SECTION B-B



DETAIL A



SECTION A-A  
**TYPE 6B INLET**



Gray Iron Castings, AASHTO M 105

**METAL FRAMES AND GRATINGS  
TYPE 6B**

NO SCALE

U.S. DEPARTMENT OF TRANSPORTATION, FHWA  
OFFICE OF FEDERAL LANDS HIGHWAY

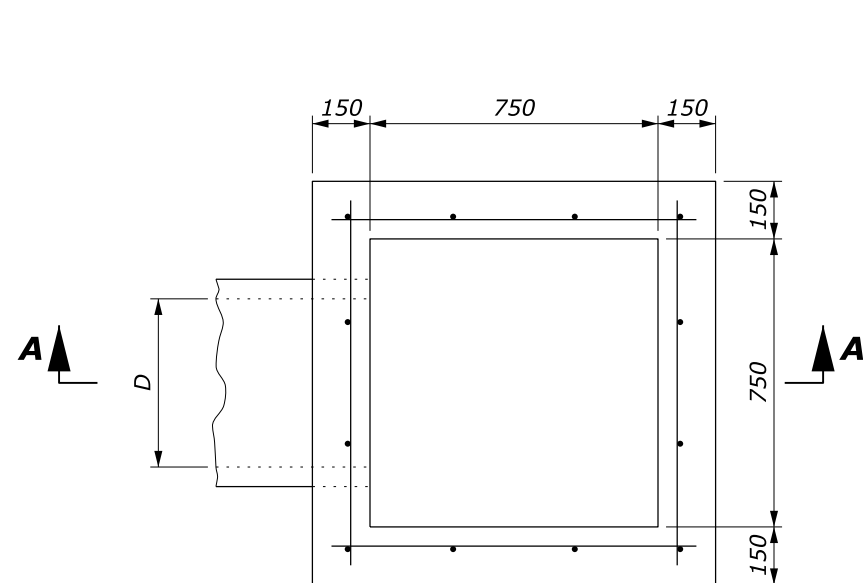
FLH STANDARD  
604-7

**INLET  
TYPE 6B**

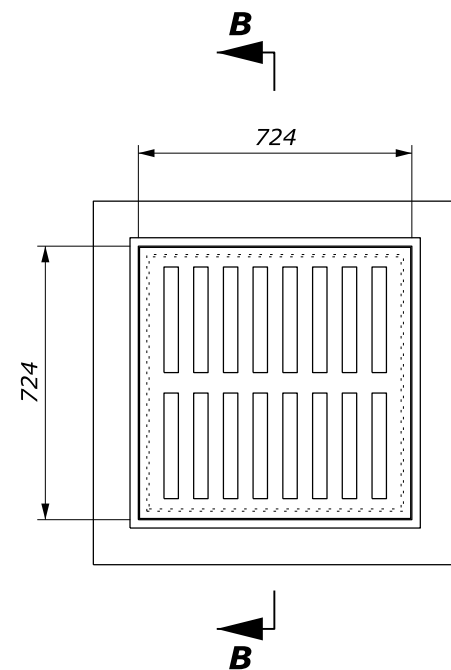
SPECIFICATION  
FP-24, FP-14  
APPROVED FOR USE  
1/2024

**NOTE:**

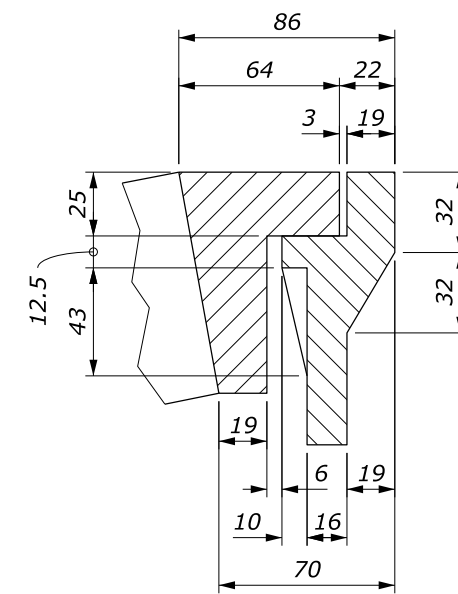
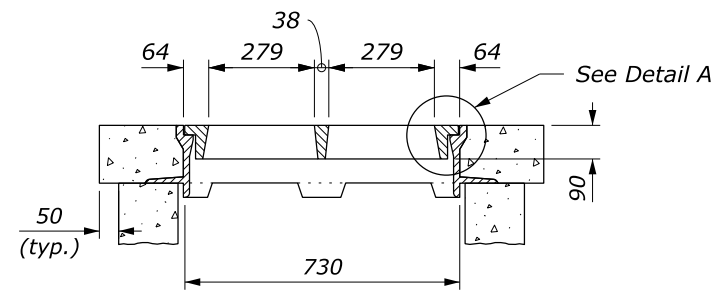
1. Construct inlets parallel to the roadway centerline and grade. For pipes on skew, adapt inlets as directed.
2. For frames and gratings, minor variations in design and dimensions are permitted to allow manufacturer's standards.



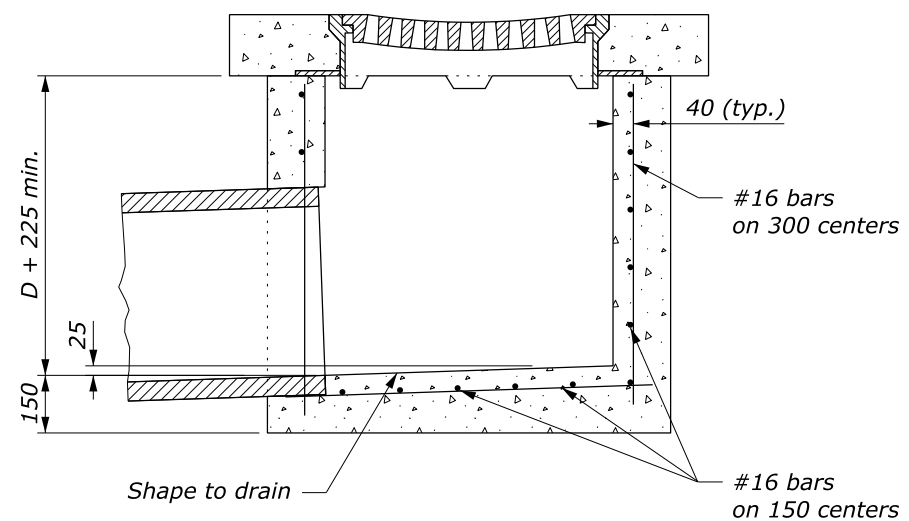
PLAN



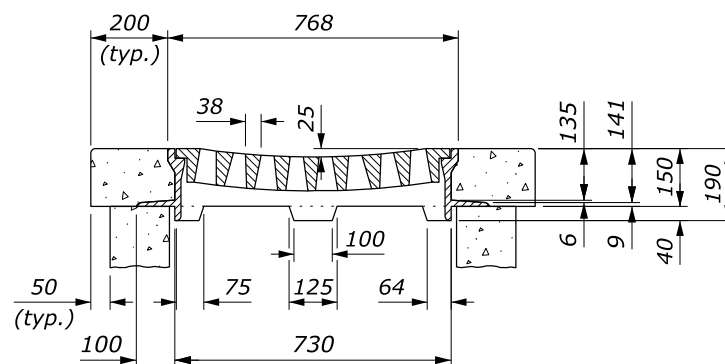
SECTION B-B



DETAIL A



SECTION A-A  
**TYPE 6B INLET**



Gray Iron Castings, AASHTO M 105

**METAL FRAMES AND GRATINGS  
TYPE 6B**

This drawing contains **Metric** units of measure. Dimensions without units are millimeters.

NO SCALE

U.S. DEPARTMENT OF TRANSPORTATION, FHWA OFFICE OF FEDERAL LANDS HIGHWAY	FLH STANDARD M604-7
<b>INLET TYPE 6B</b>	SPECIFICATION FP-24, FP-14
	APPROVED FOR USE 1/2024