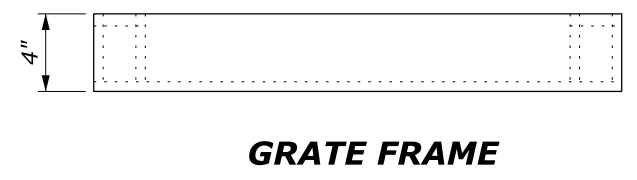
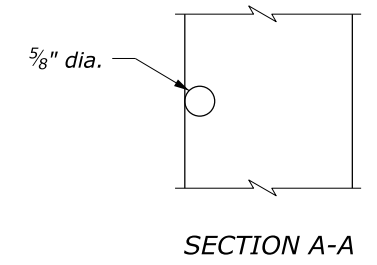
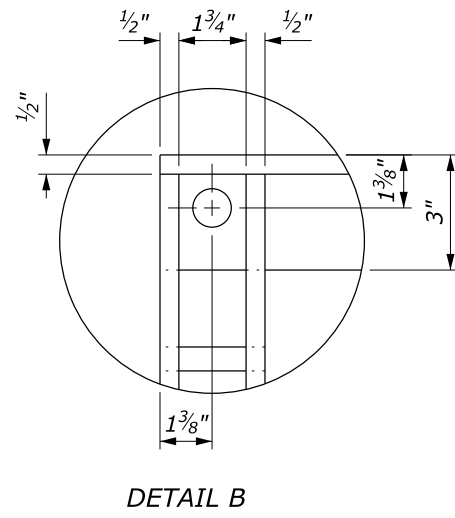
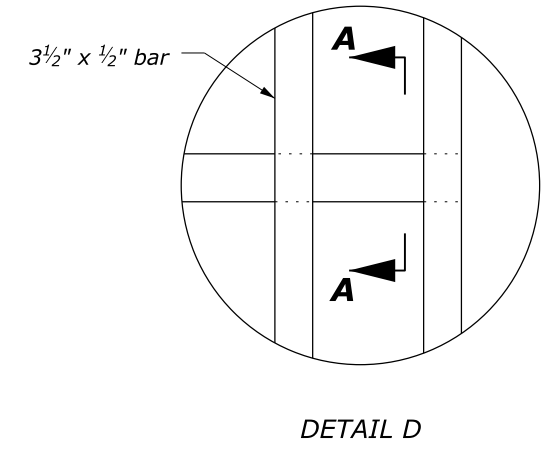


NOTE:

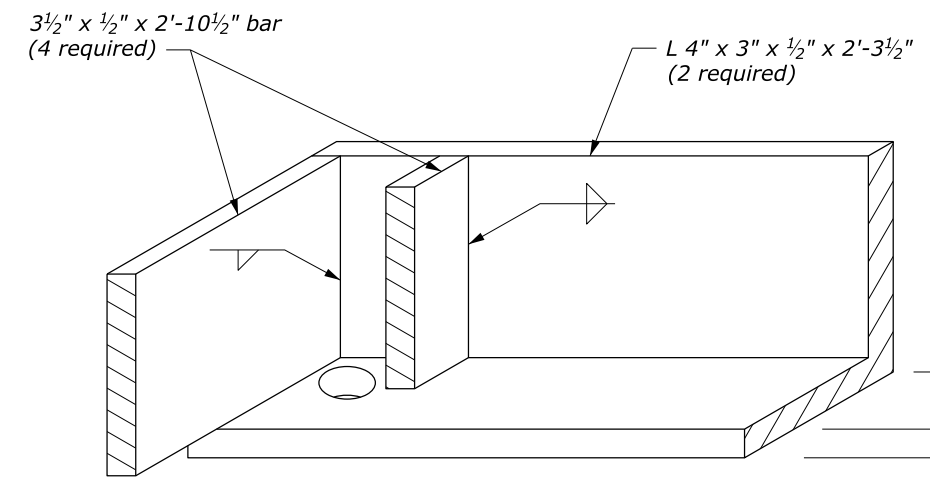
1. Hot dip galvanize all metal parts for frame and grate after fabrication.
2. Fabricate frame and grate from structural steel.
3. Attach frame to inlet using four 3/4" x 8" anchor bolts with nuts.
4. Cut holes in 3 1/2" x 1/2" bars as required to place 5/8-inch diameter rods.
5. Spot weld 5/8-inch diameter rods for frame and grate to 3 1/2" x 1/2" bars.



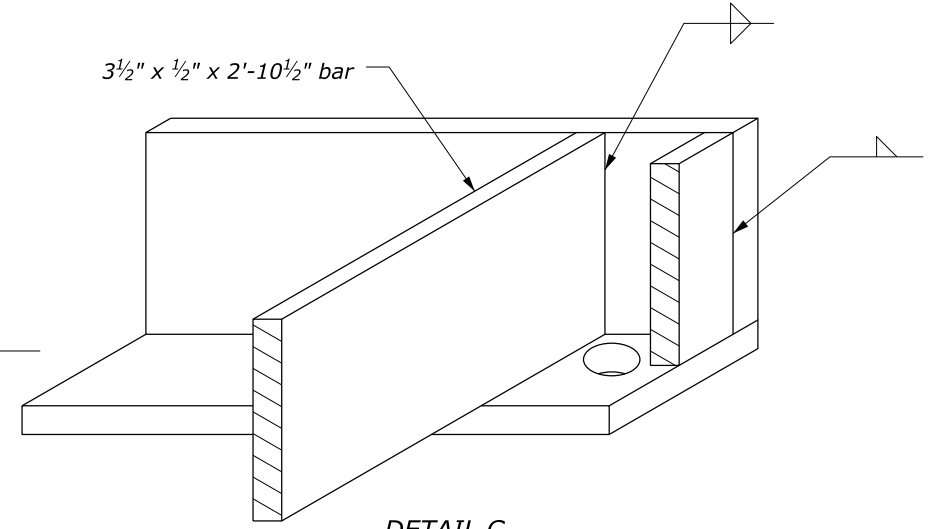
GRATE



DETAIL D



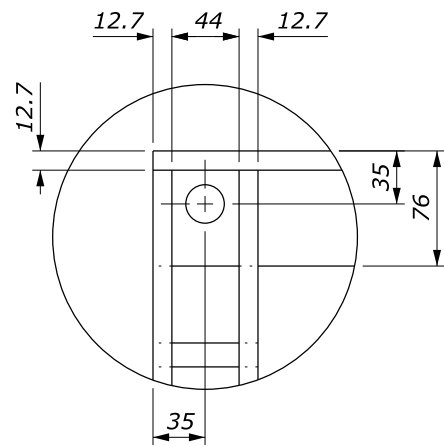
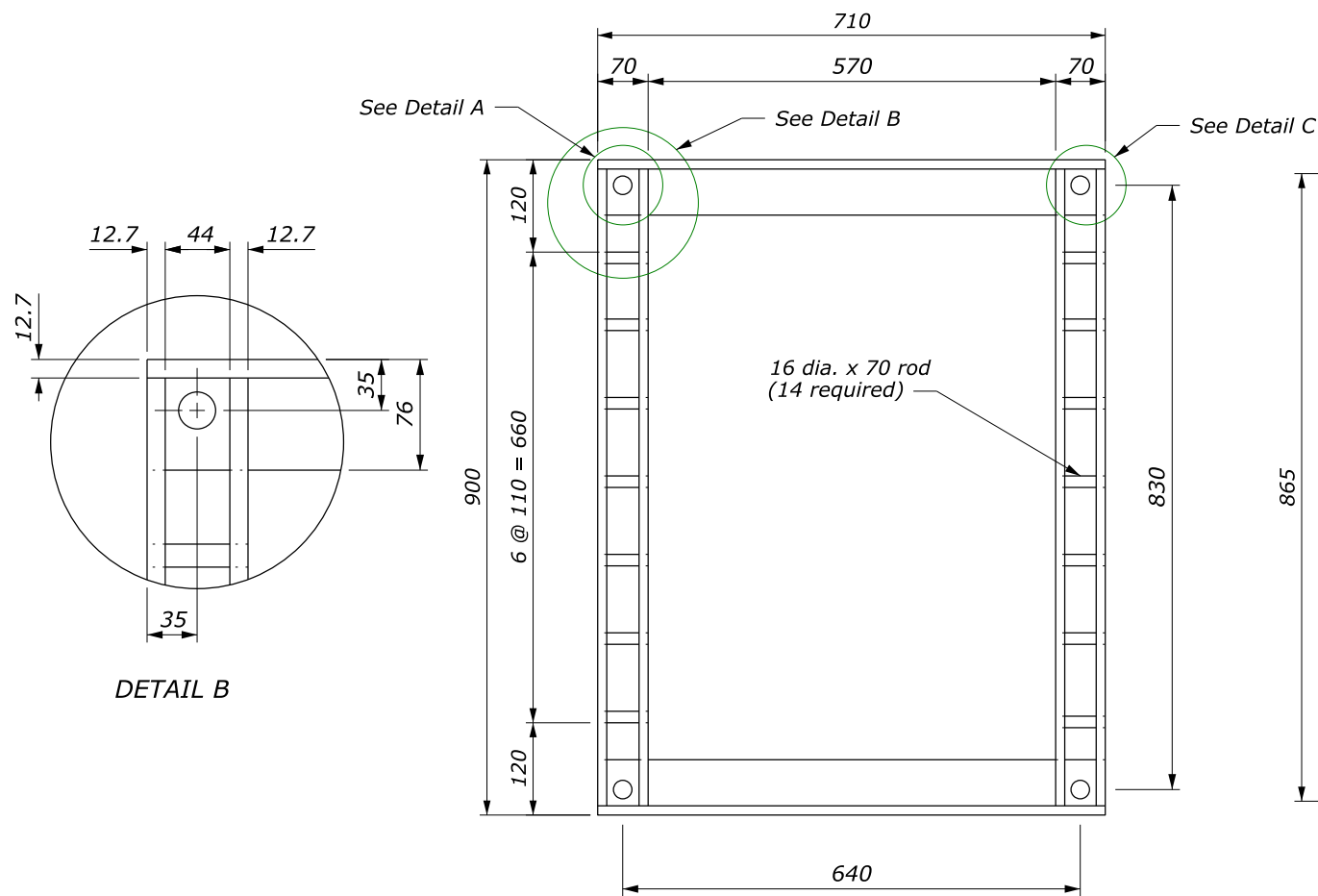
DETAIL A (OBLIQUE)



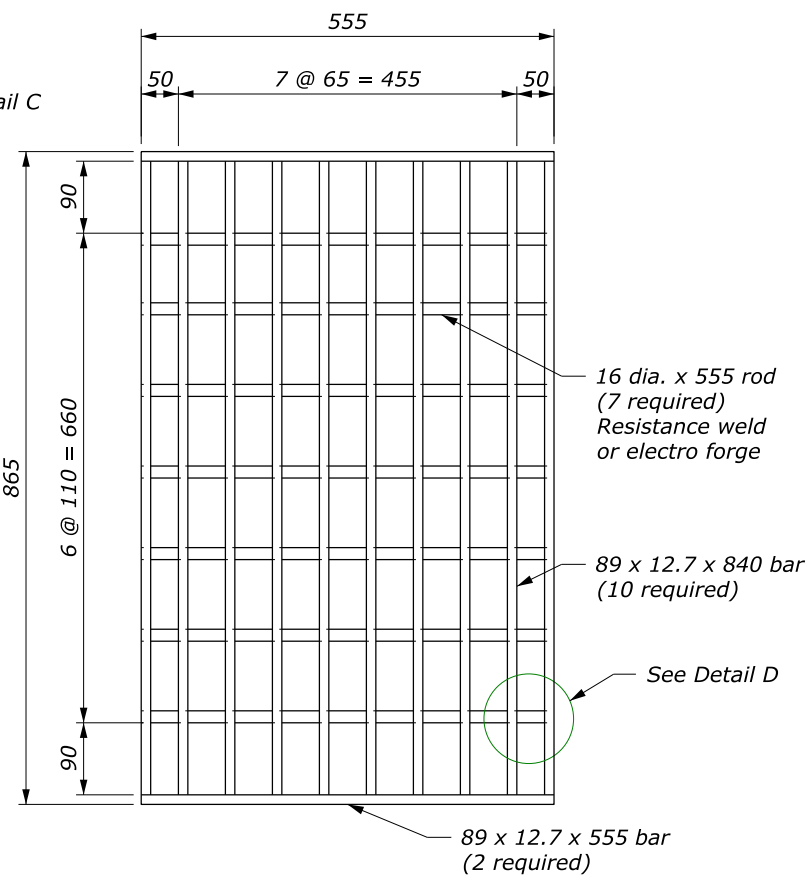
DETAIL C (OBLIQUE)

NO SCALE

U.S. DEPARTMENT OF TRANSPORTATION, FHWA OFFICE OF FEDERAL LANDS HIGHWAY		FLH STANDARD 604-6
FRAME AND GRATE, TYPE 5A		SPECIFICATION FP-24, FP-14
		APPROVED FOR USE 1/2024



DETAIL B



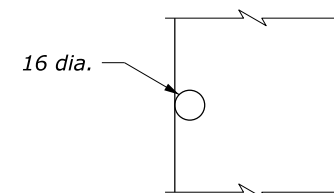
GRATE



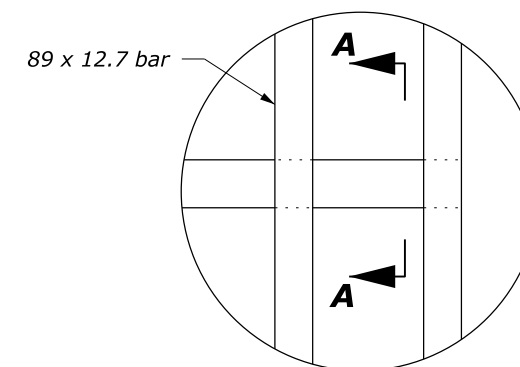
GRATE FRAME

NOTE:

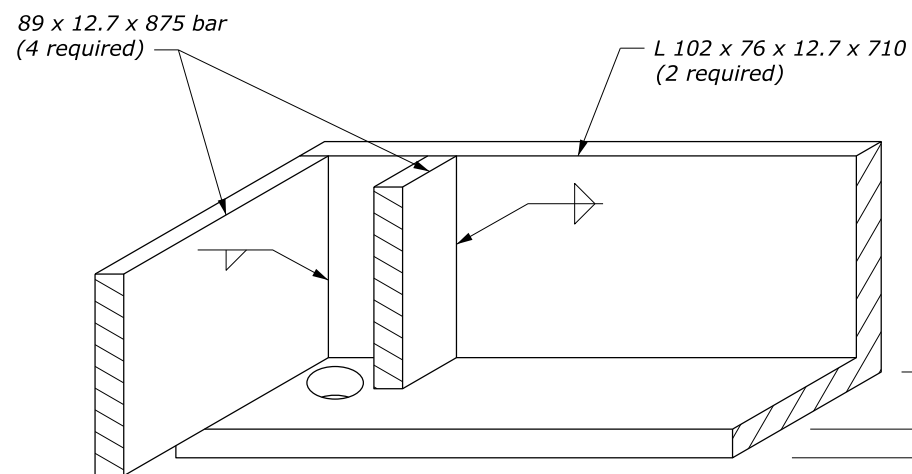
- Hot dip galvanize all metal parts for frame and grate after fabrication.
- Fabricate frame and grate from structural steel.
- Attach frame to inlet using four M20 x 120 x 200 mm anchor bolts with nuts.
- Cut holes in 89 x 12.7 mm bar as required to place 16 mm diameter rods.
- Spot weld 16 mm diameter rods for frame and grate to 89 x 12.7 mm bars.
- Furnish hardware in the metric sizes shown. Equivalent U.S. Customary sizes may be used when metric sizes are unavailable.



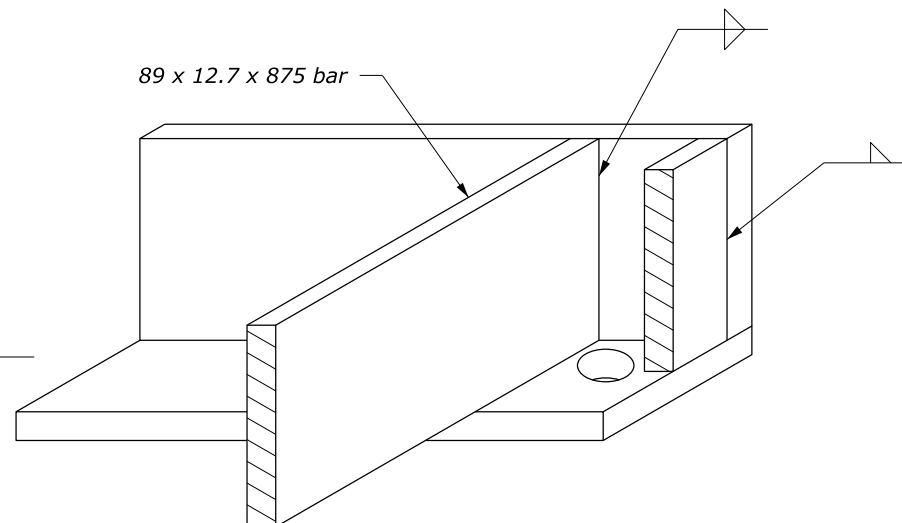
SECTION A-A



DETAIL D



DETAIL A (OBLIQUE)



DETAIL C (OBLIQUE)

This drawing contains **Metric** units of measure. Dimensions without units are millimeters.

NO SCALE

U.S. DEPARTMENT OF TRANSPORTATION, FHWA OFFICE OF FEDERAL LANDS HIGHWAY	FLH STANDARD M604-6
FRAME AND GRATE, TYPE 5A	SPECIFICATION FP-24, FP-14
	APPROVED FOR USE 1/2024

c:\pwwork\dms44776\Std604-5.dgn [Std M604-6] 23 July 2024 4:11 PM