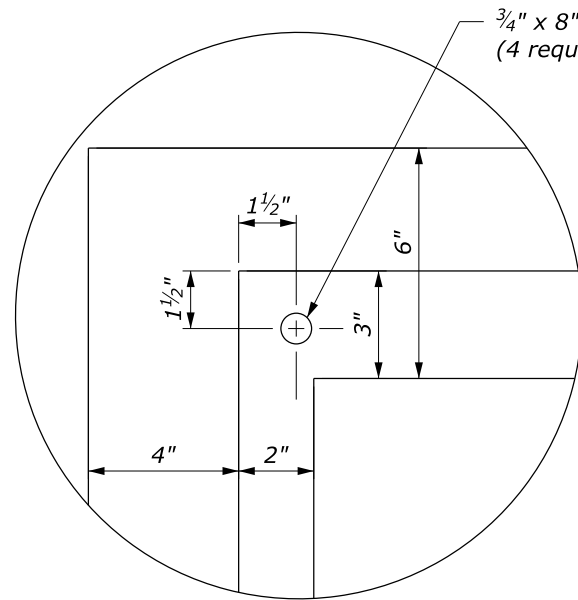
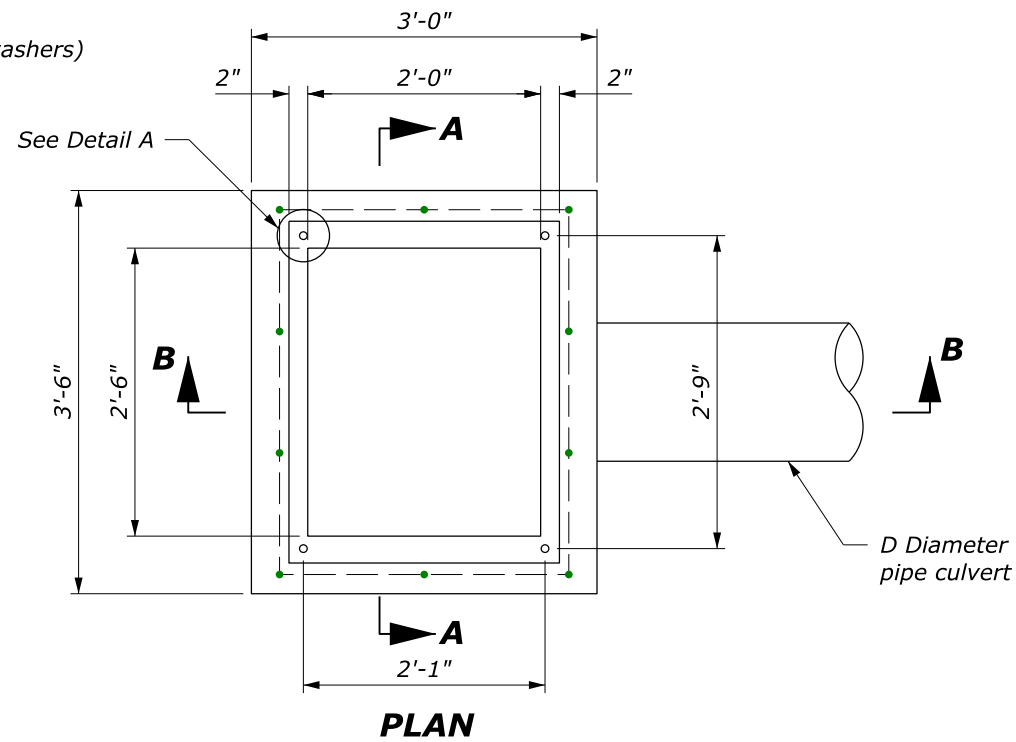


NOTE:

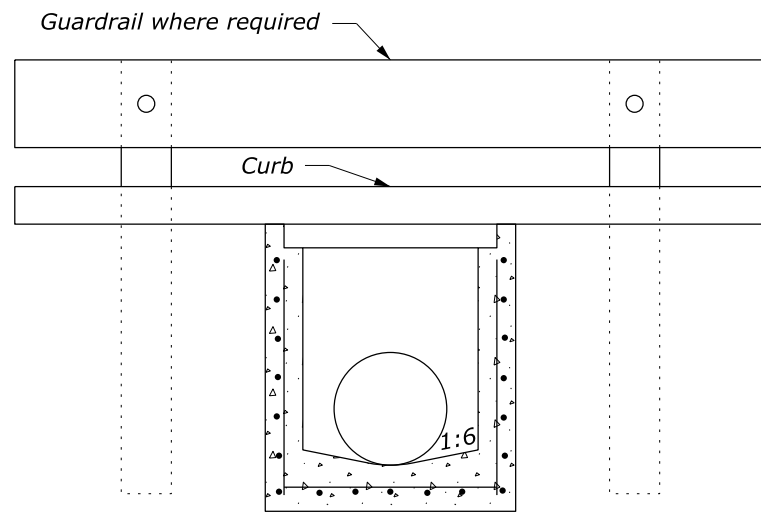
1. All reinforcing bars are #5 placed a minimum 1½-inch clear from face of concrete. In floors, place bars on 6-inch centers each way. In walls, place horizontal bars on 6-inch centers and vertical bars on 12-inch centers.
2. Curb shape shown for illustration only. Actual curb shape and dimensions are shown in the plans.
3. See Standard 604-6 for Frame and Grate Details.



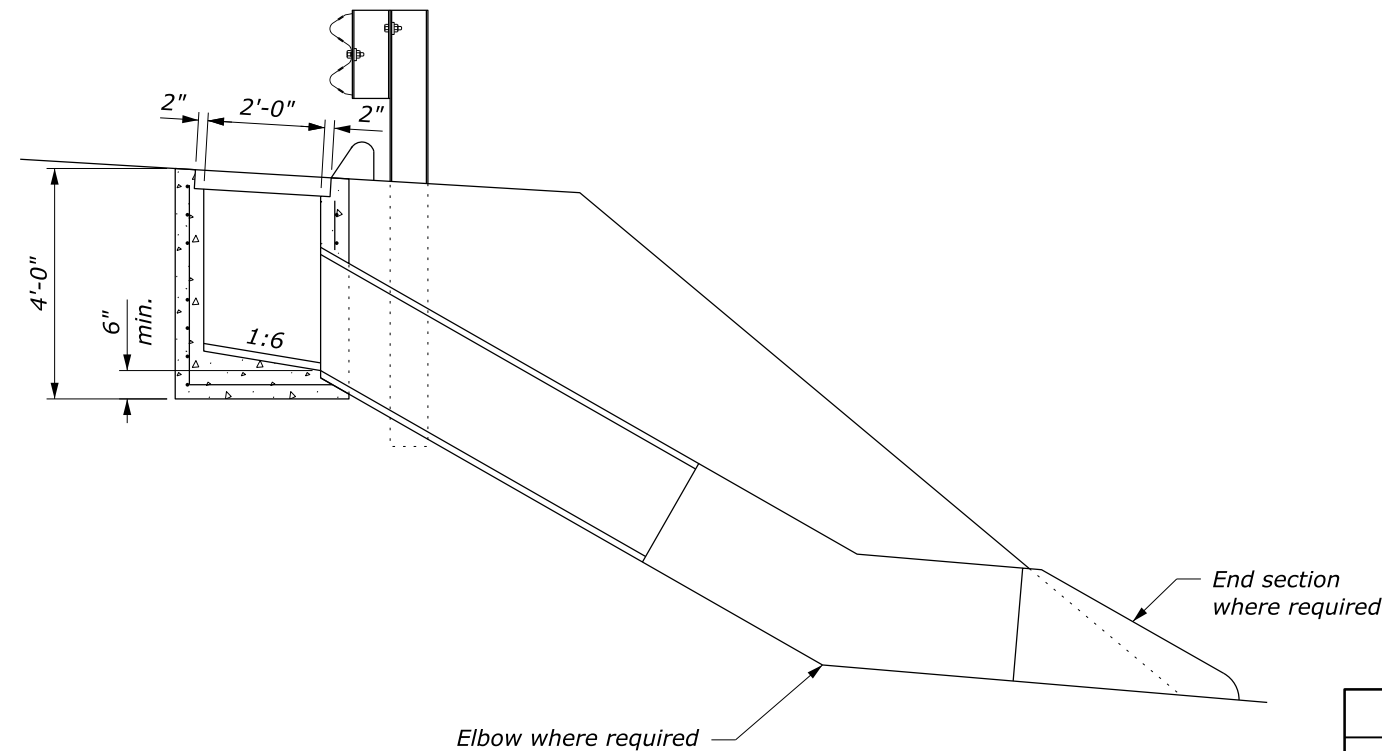
DETAIL A



PLAN

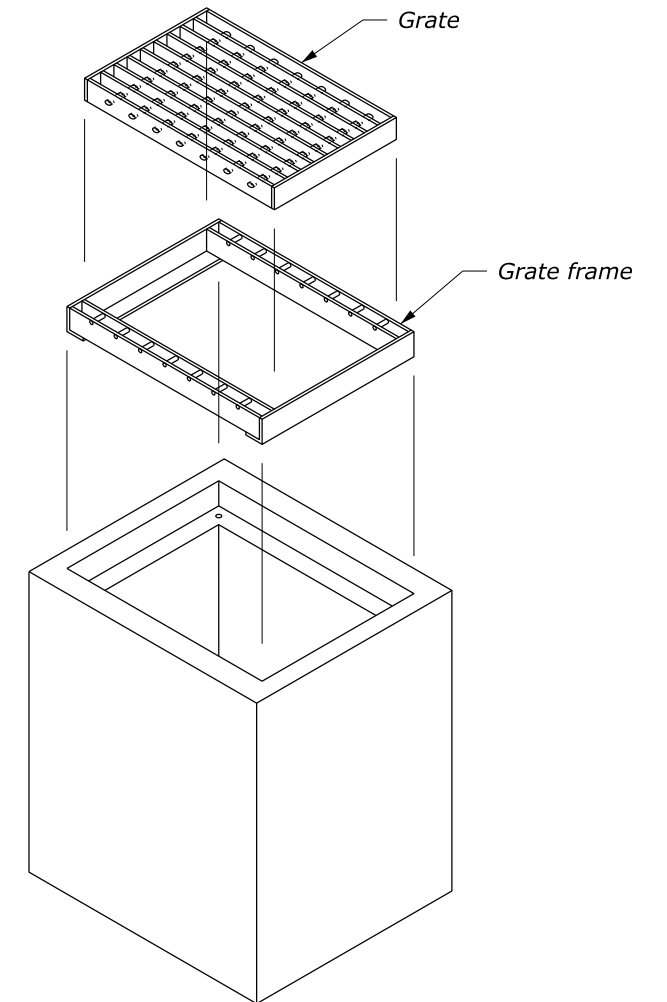


SECTION A-A



SECTION B-B

NO SCALE



ISOMETRIC VIEW

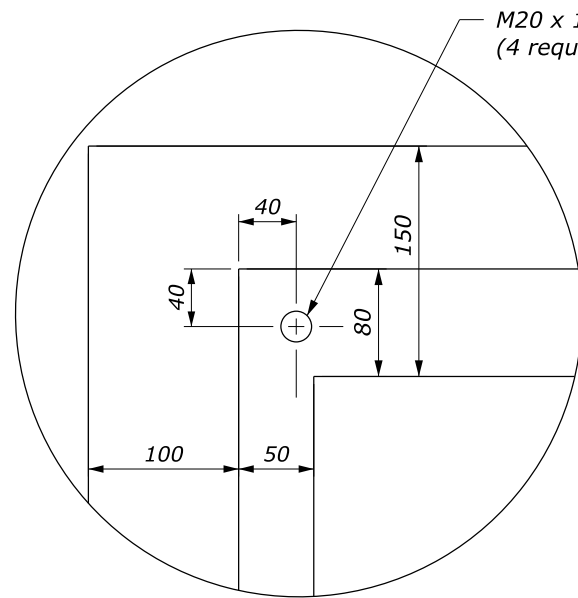
U.S. DEPARTMENT OF TRANSPORTATION, FHWA
OFFICE OF FEDERAL LANDS HIGHWAY

**INLET
TYPE 5A**

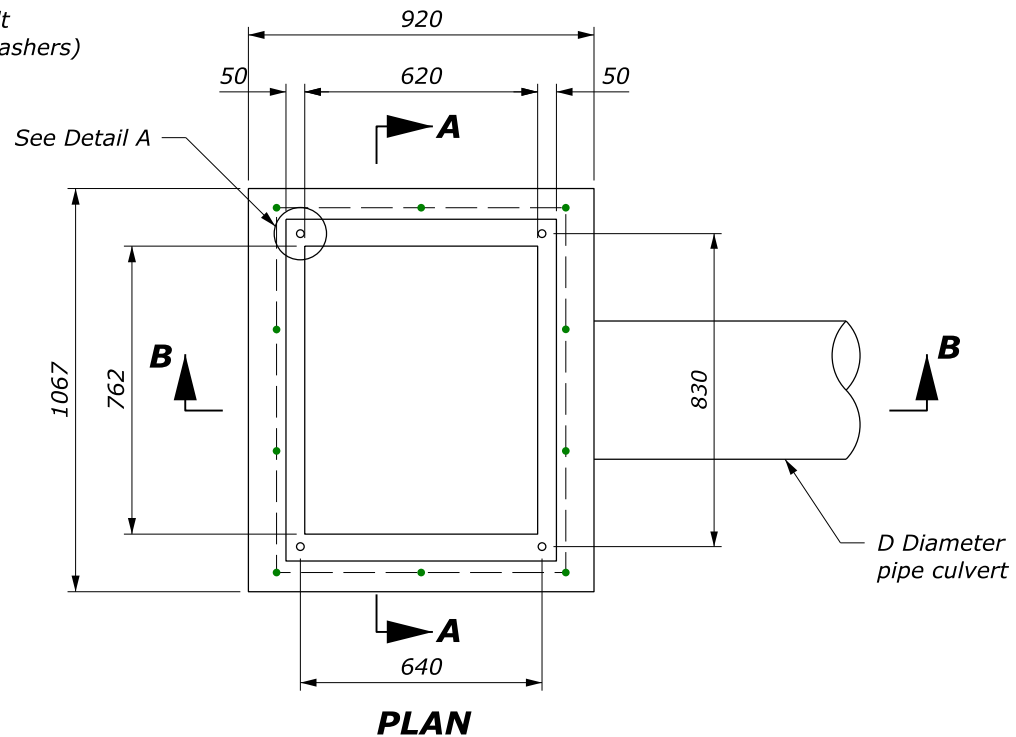
FLH STANDARD
604-5

SPECIFICATION
FP-24, FP-14

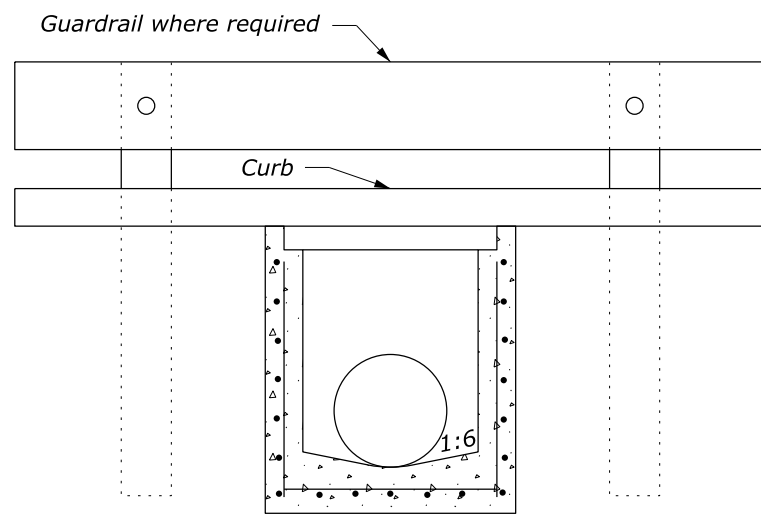
APPROVED FOR USE
1/2024



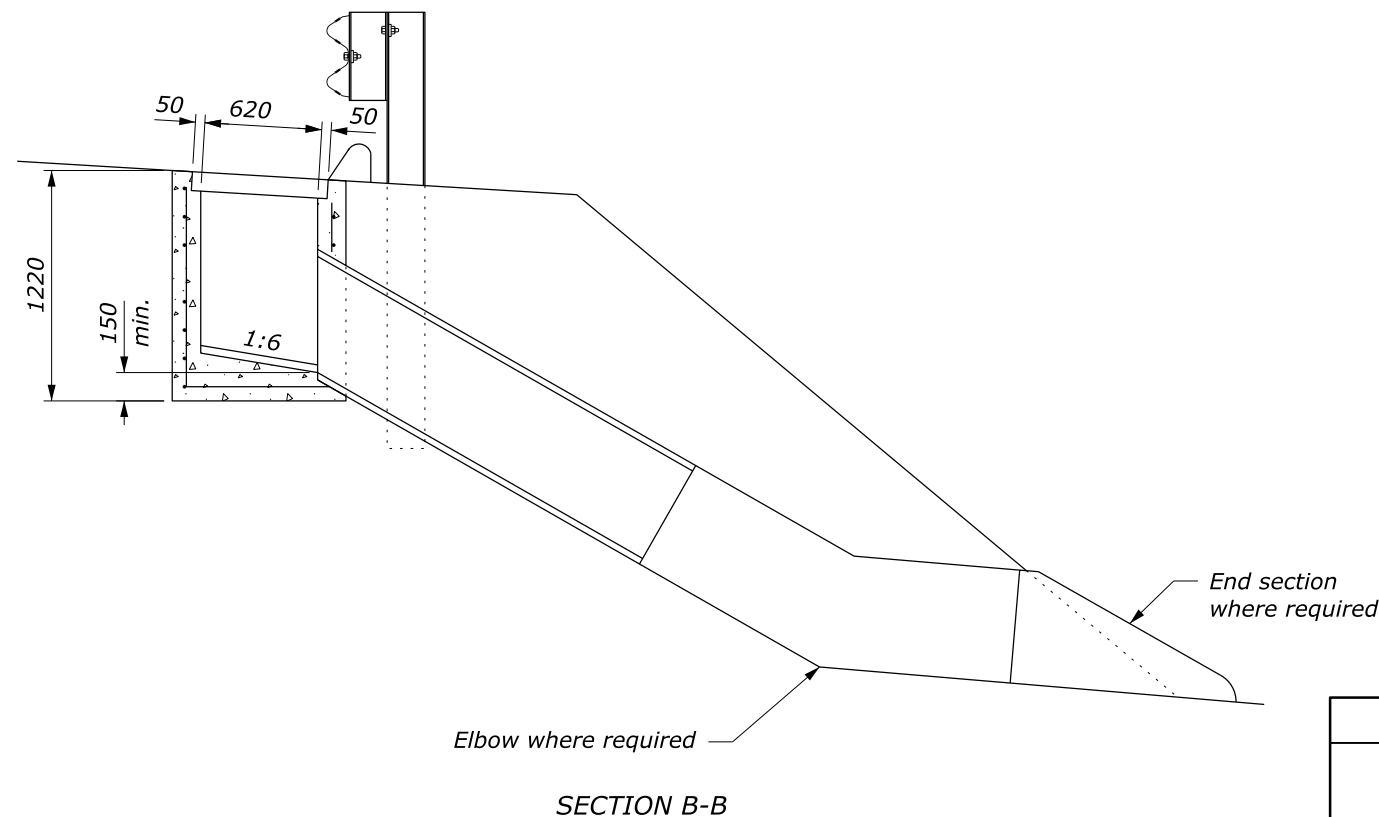
DETAIL A



PLAN



SECTION A-A

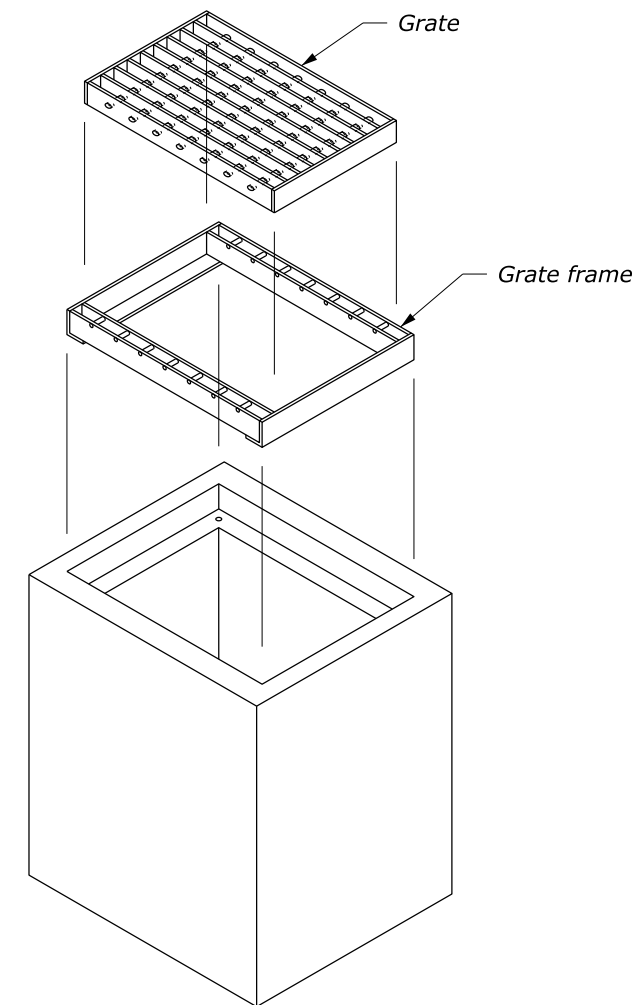


SECTION B-B

NO SCALE

NOTE:

1. All reinforcing bars are #16 placed a minimum 40 mm clear from face of concrete. In floors, place bars on 150 mm centers each way. In walls, place horizontal bars on 150 mm centers and vertical bars on 300 mm centers.
2. Curb shape shown for illustration only. Actual curb shape and dimensions are shown in the plans.
3. See Standard M604-6 for Frame and Grate Details.



ISOMETRIC VIEW

This drawing contains **Metric** units of measure. Dimensions without units are millimeters.

U.S. DEPARTMENT OF TRANSPORTATION, FHWA OFFICE OF FEDERAL LANDS HIGHWAY	FLH STANDARD M604-5
INLET TYPE 5A	SPECIFICATION FP-24, FP-14
	APPROVED FOR USE 1/2024