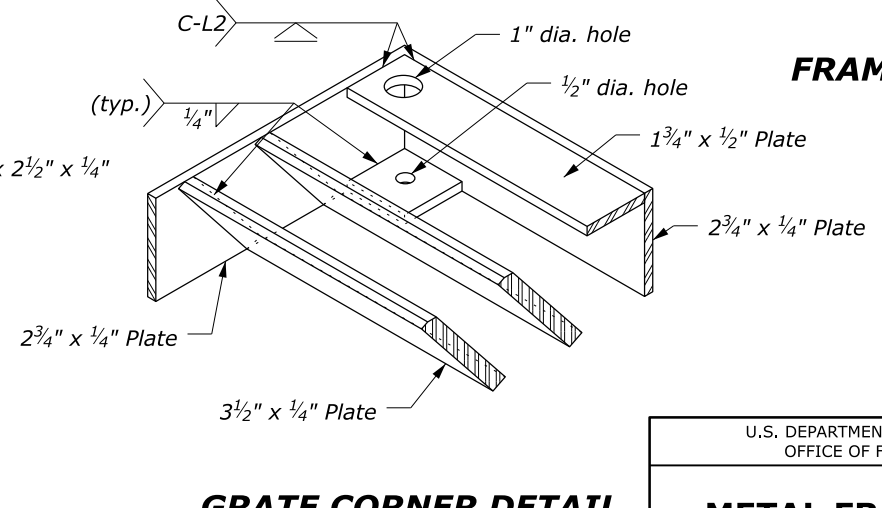
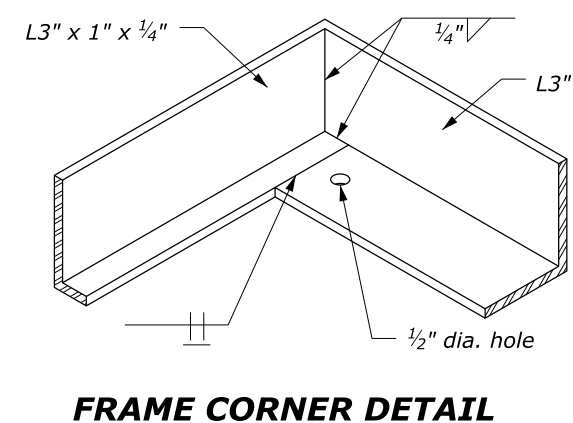
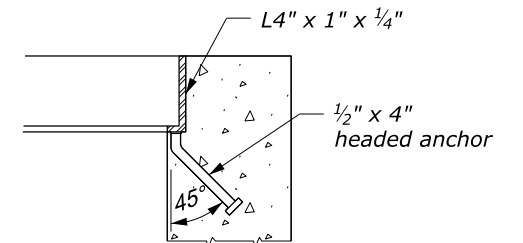
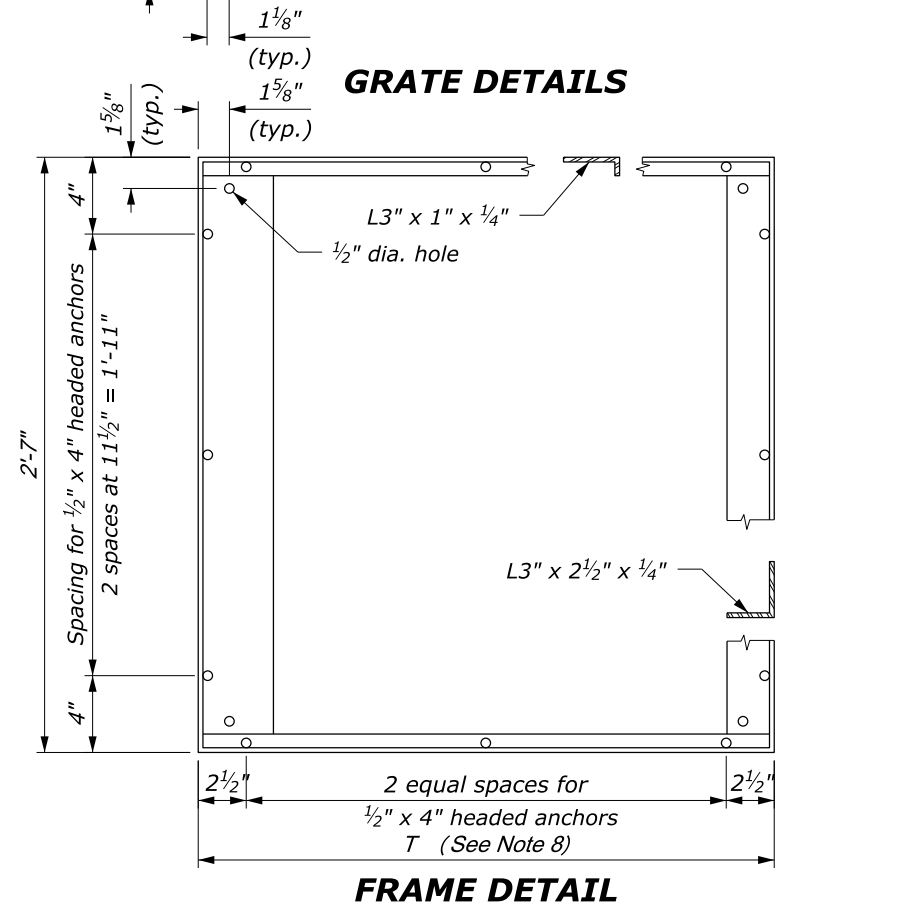
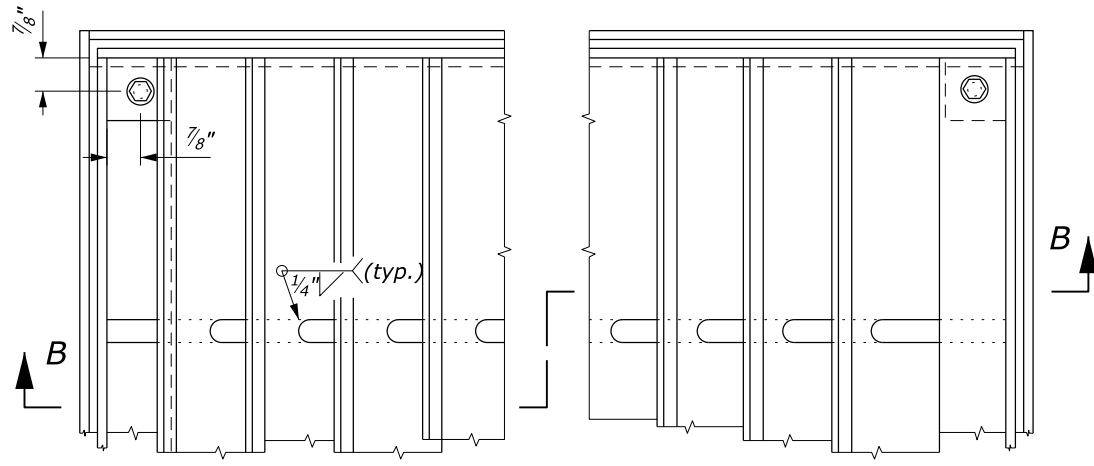
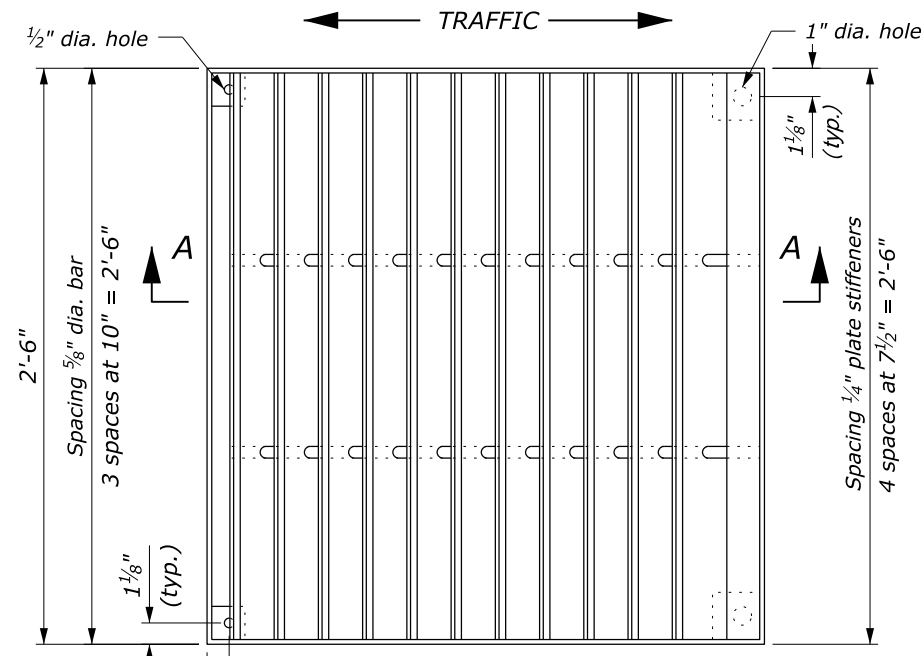


**NOTE:**

1. STRUCTURAL STEEL: ASTM A36.
2. BOLTS & WASHERS: ASTM A307, Galvanized.
3. THREADED CONCRETE ANCHORS: Ferrule loop inserts for  $3/8$  inch bolt or approved equal.
4. HEADED CONCRETE ANCHORS: Weld to frame with a full penetration butt weld.
5. WELDING: Weld in conformance with the Standard Specifications. Unless otherwise indicated seal weld all joints with a minimum size fillet weld, based on material thickness. Grind smooth all contact surfaces. FINISH: Galvanized after fabrication.
6. Estimated weight, frame and grate (2'-6" x 2'-6") 238 lbs. Increase or decrease weight by 19 lbs for each  $2\frac{3}{8}$ -inch increment.
7. Number of plates varies according to pipe diameter. See Standard 604-1.
8. See Standard 604-1 for dimensions of T.



NO SCALE

U.S. DEPARTMENT OF TRANSPORTATION, FHWA OFFICE OF FEDERAL LANDS HIGHWAY	FLH STANDARD 604-3
<b>METAL FRAME AND GRATE TYPE B</b>	SPECIFICATION FP-24, FP-14 APPROVED FOR USE 1/2024

