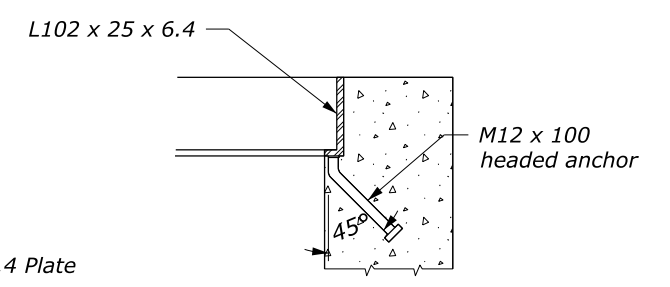
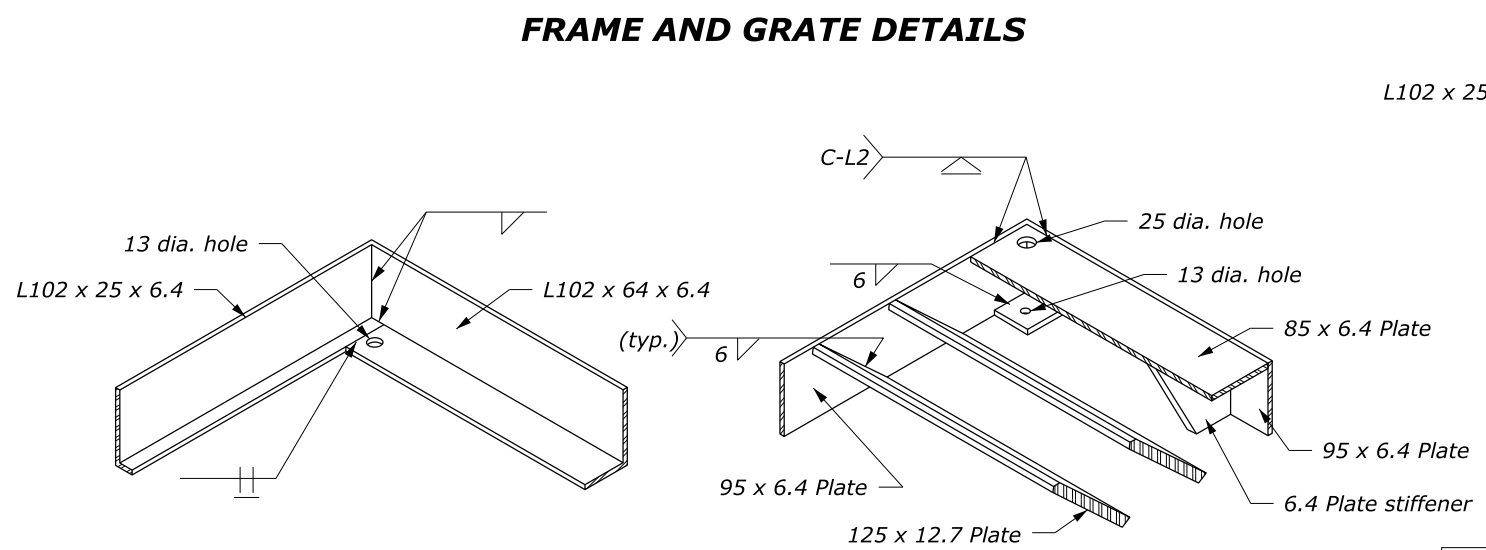
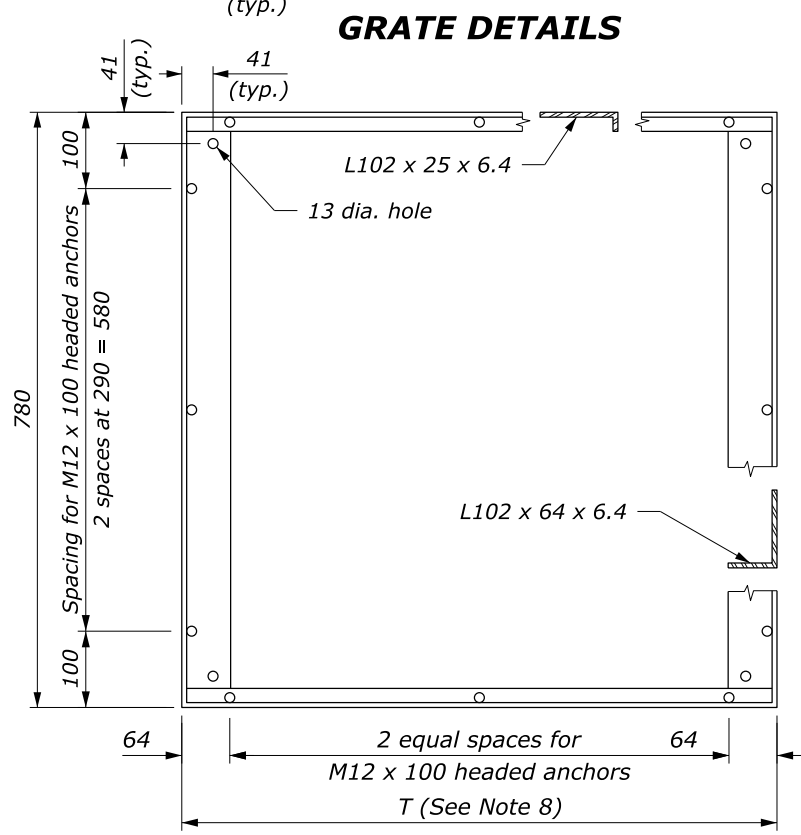
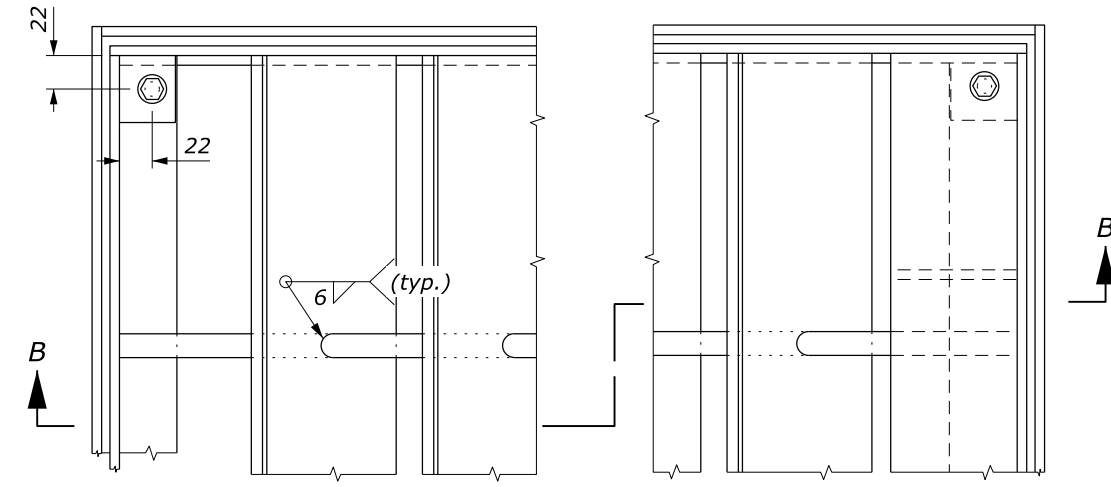
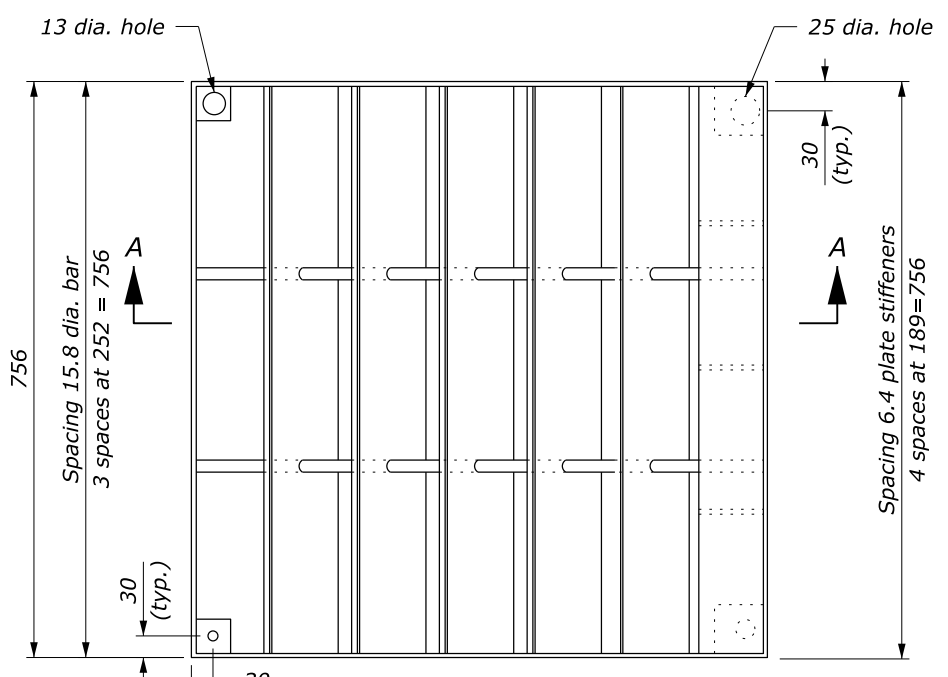


- NOTE:**
1. STRUCTURAL STEEL: ASTM A36.
 2. BOLTS & WASHERS: ASTM A307, Galvanized.
 3. THREADED CONCRETE ANCHORS: Ferrule loop inserts for M10 bolt or approved equal.
 4. HEADED CONCRETE ANCHORS: Weld to frame with a full penetration butt weld.
 5. WELDING: Weld in conformance with the Standard Specifications. Unless otherwise indicated seal weld all joints with a minimum size fillet weld, based on material thickness. Grind smooth all contact surfaces. FINISH: Galvanized after fabrication.
 6. Estimated weight, frame and grate (756 x 756) 97.5 kg. Increase or decrease weight by 12.7 kg for each 115 increment.
 7. Number of plates varies according to pipe diameter. See Standard M604-1.
 8. See Standard M604-1 for dimensions of T.
 9. Furnish hardware in the metric sizes shown. Equivalent U.S. Customary sizes may be used when metric sizes are unavailable.



This drawing contains **Metric** units of measure. Dimensions without units are millimeters.

U.S. DEPARTMENT OF TRANSPORTATION, FHWA OFFICE OF FEDERAL LANDS HIGHWAY	FLH STANDARD M604-2
METAL FRAME AND GRATE TYPE A	SPECIFICATION FP-24, FP-14
	APPROVED FOR USE 1/2024

NO SCALE

c:\pwwork\dm\44776\Std604-2.dgn [Std M604-2] 23 July 2024 2:52 PM