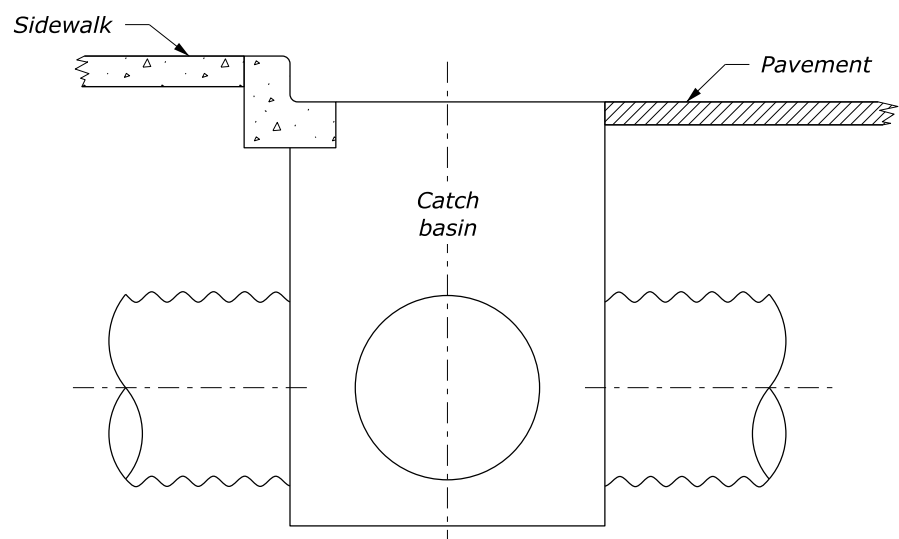
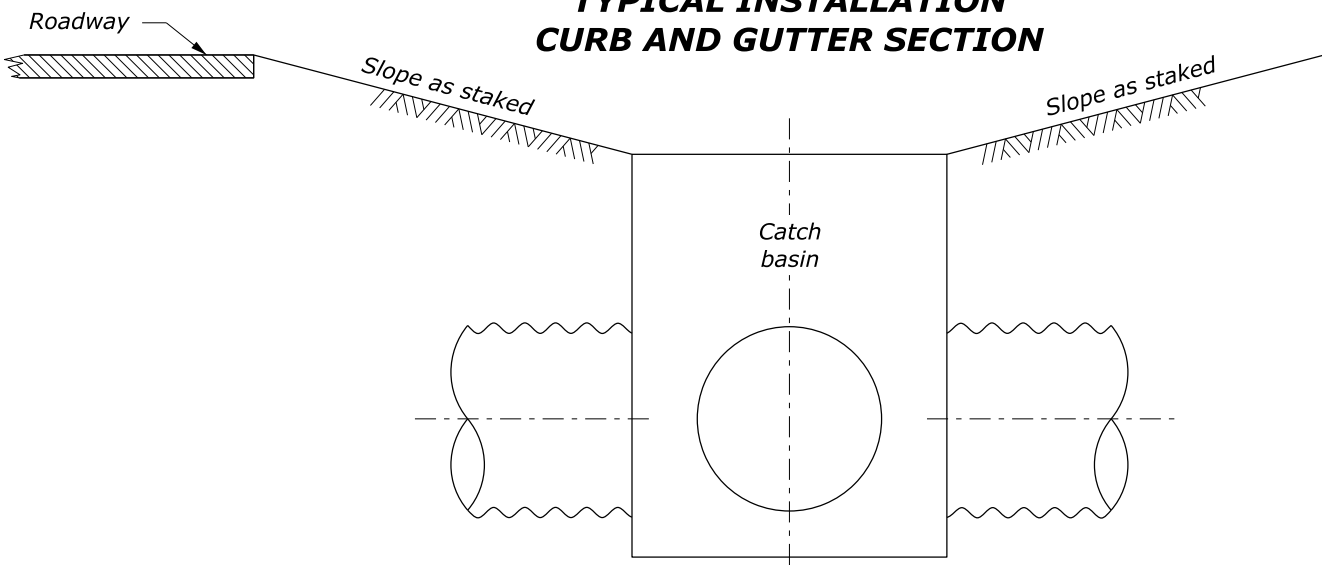


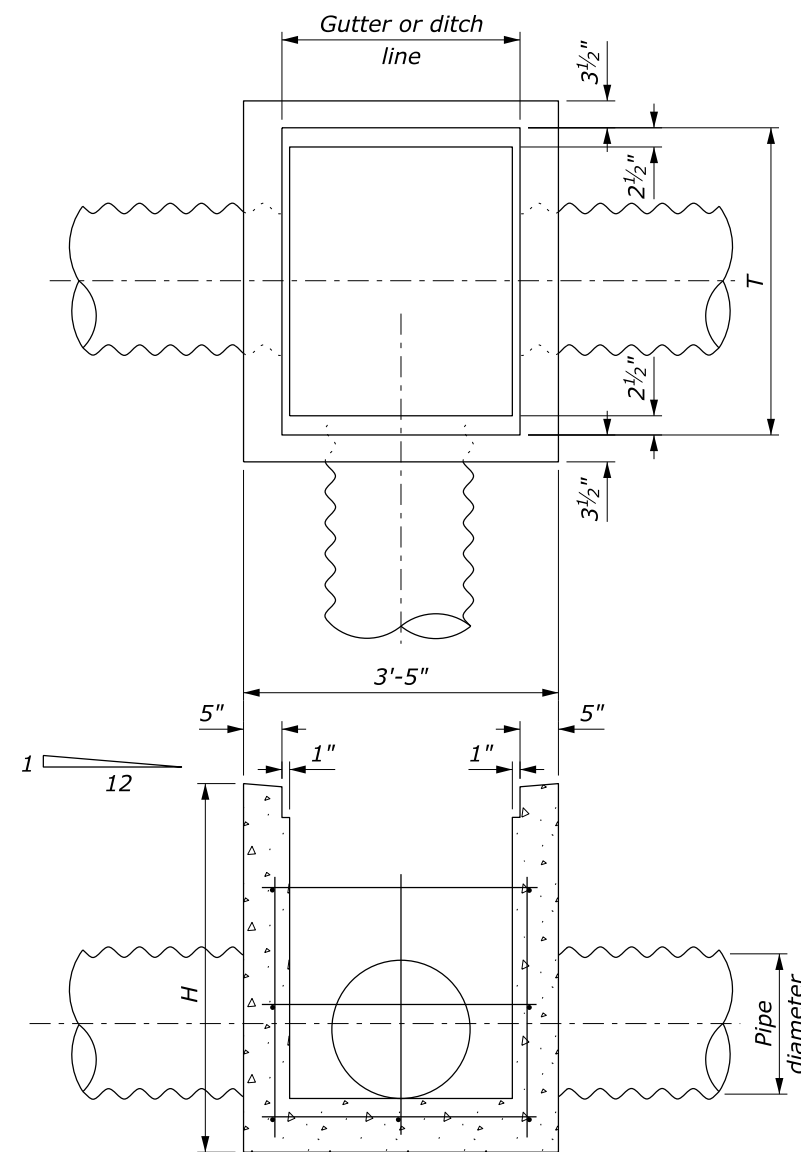
**TYPICAL INSTALLATION CURB SECTION**



**TYPICAL INSTALLATION CURB AND GUTTER SECTION**



**TYPICAL INSTALLATION DITCH SECTION**



All reinforcing steel #4 at 12"±.  
Bend to clear pipe

**INLET DETAIL**

**NOTE:**

1. Chamfer all exposed edges  $\frac{3}{4}$  inch and finish all exposed surfaces with a Class 1 ordinary finish.
2. The minimum concrete cover to the face of any bar is 2 inches unless otherwise shown.
3. See Standard 604-2 for Type A Frame and Grate and Standard 604-3 for Type B Frame and Grate.

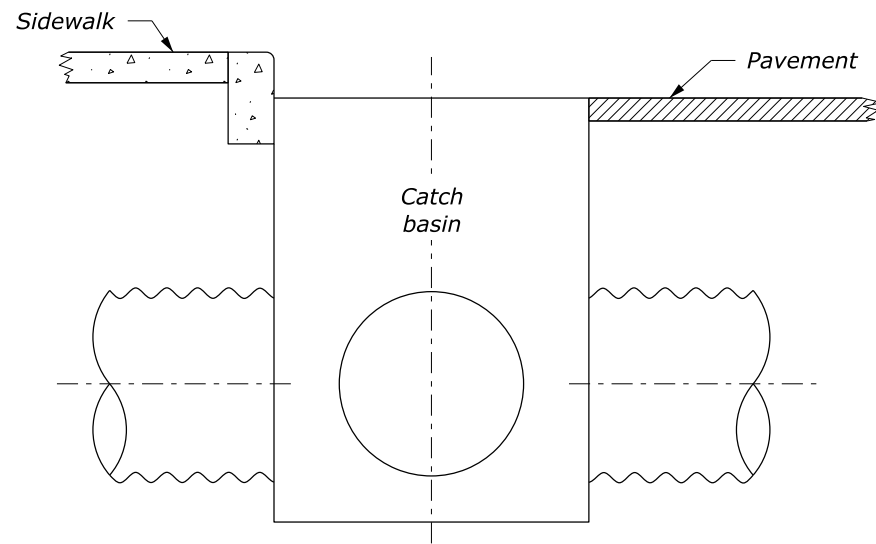
CONCRETE CATCH BASINS			
PIPE SIZE DIAMETER	DEPTH H	FRAME AND GRATE T	
		TYPE A	TYPE B
12"	3'-0"	2'-6"	2'-6"
18"	3'-0"	2'-6"	2'-6"
24"	4'-0"	3'-3"	3'-4"
30"	4'-0"	4'-0"	4'-2"
36"	4'-6"	4'-9"	5'-0"
42"	5'-0"	5'-6"	5'-5"
48"	5'-6"	6'-3"	6'-3"

CONCRETE CATCH BASINS				
PIPE SIZE DIAMETER	ESTIMATED QUANTITIES			
	CONCRETE CUYD	REINFORCING STEEL LB	FRAME AND GRATE LB	
			TYPE A	TYPE B
12"	0.7	54	215	238
18"	0.7	54	215	238
24"	1.1	81	271	314
30"	1.2	92	327	390
36"	1.5	101	383	466
42"	1.8	131	439	504
48"	2.2	151	495	580

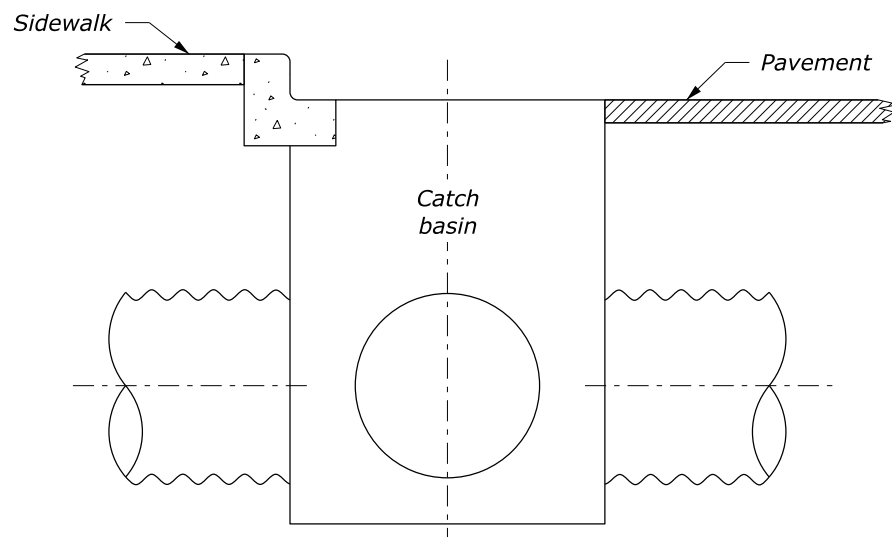
NO SCALE

U.S. DEPARTMENT OF TRANSPORTATION, FHWA OFFICE OF FEDERAL LANDS HIGHWAY	FLH STANDARD <b>604-1</b>
<b>CATCH BASIN, TYPE 1</b>	SPECIFICATION FP-24, FP-14
	APPROVED FOR USE 1/2024

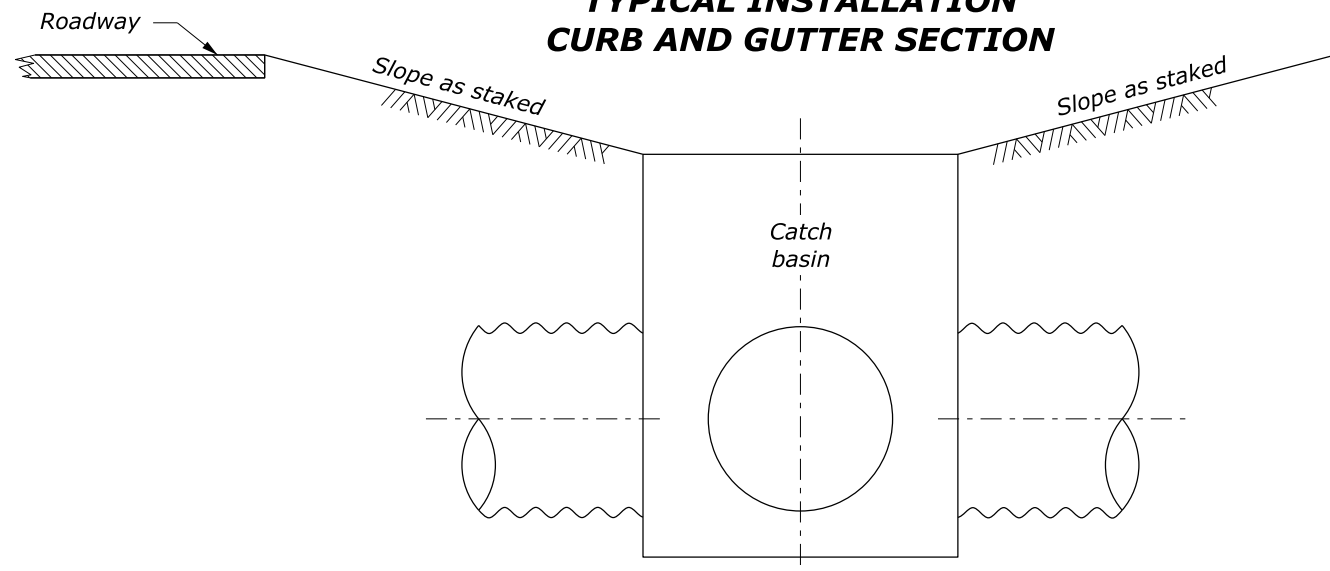
c:\pwwork\dm54776\Std604-1.dgn [Std 604-1] 23 July 2024 2:41 PM



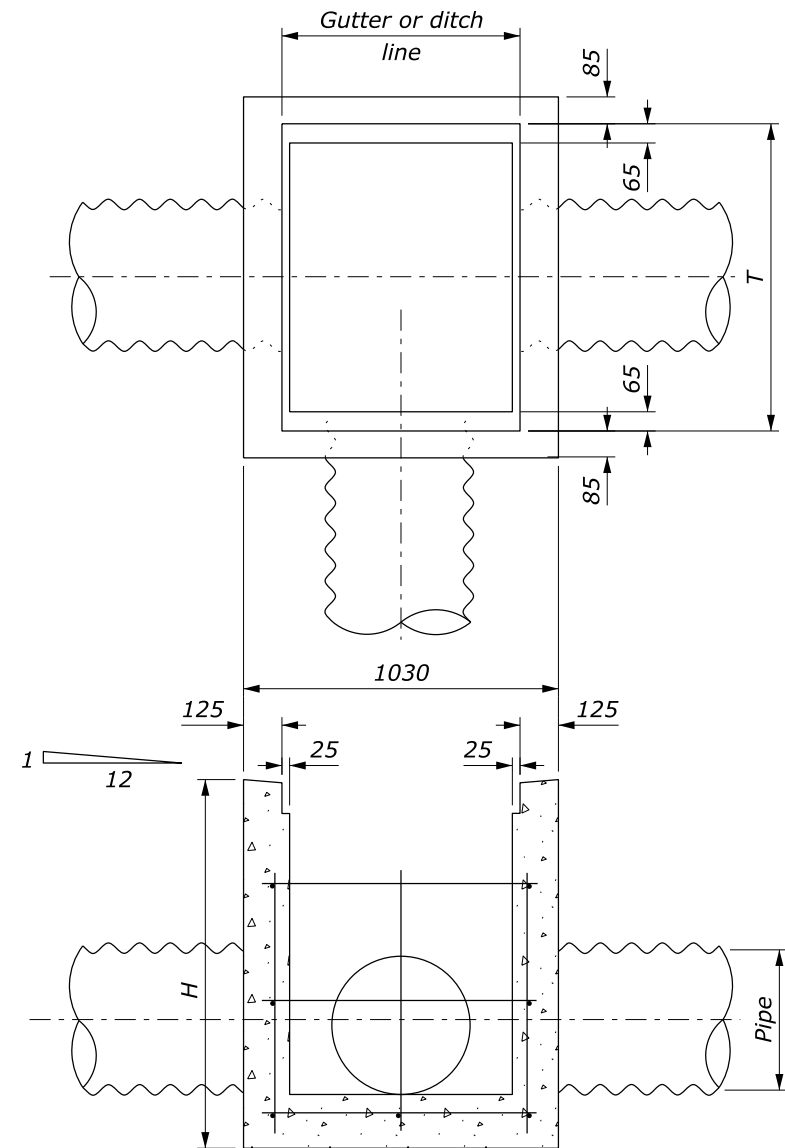
**TYPICAL INSTALLATION CURB SECTION**



**TYPICAL INSTALLATION CURB AND GUTTER SECTION**



**TYPICAL INSTALLATION DITCH SECTION**



All reinforcing steel #13 at 300 mm±. Bend to clear pipe

**INLET DETAIL**

**NOTE:**

1. Chamfer all exposed edges 20 mm and finish all exposed surfaces with a Class 1 ordinary finish.
2. The minimum concrete cover to the face of any bar is 50 mm unless otherwise shown.
3. See Standard M604-2 for Type A Frame and Grate and Standard M604-3 for Type B Frame and Grate.

CONCRETE CATCH BASINS			
PIPE SIZE DIAMETER	DEPTH H	FRAME AND GRATE T	
		TYPE A	TYPE B
300	900	780	780
450	900	780	780
600	1200	1010	1020
750	1200	1240	1260
900	1350	1470	1500
1050	1500	1700	1680
1200	1650	1930	1920

CONCRETE CATCH BASINS				
PIPE SIZE DIAMETER	ESTIMATED QUANTITIES			
	CONCRETE m3	REINFORCING STEEL kg	FRAME AND GRATE kg	
			TYPE A	TYPE B
300	0.6	24	98	108
450	0.6	24	98	108
600	0.8	37	123	142
750	0.9	42	148	177
900	1.2	46	174	211
1050	1.4	59	199	263
1200	1.7	68	225	297

This drawing contains **Metric** units of measure. Dimensions without units are millimeters.

U.S. DEPARTMENT OF TRANSPORTATION, FHWA OFFICE OF FEDERAL LANDS HIGHWAY	FLH STANDARD <b>M604-1</b>
<b>CATCH BASIN, TYPE 1</b>	SPECIFICATION FP-24, FP-14
	APPROVED FOR USE 1/2024

NO SCALE