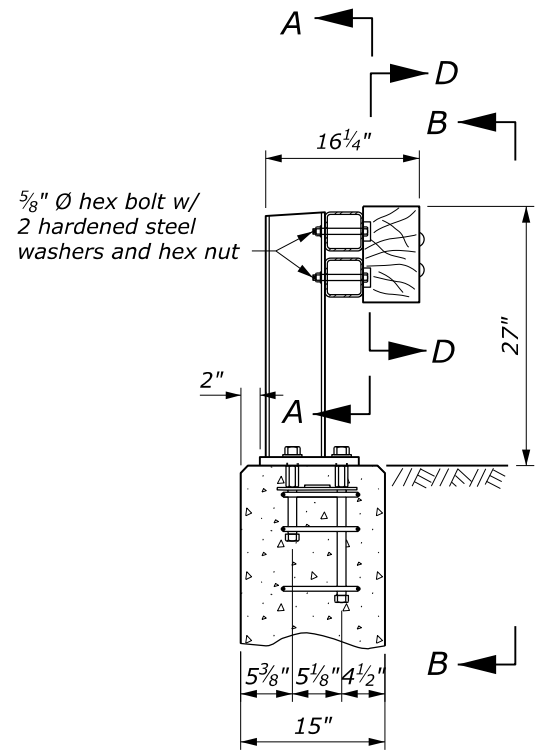


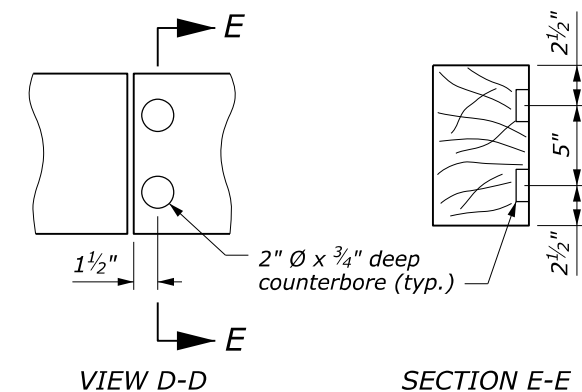
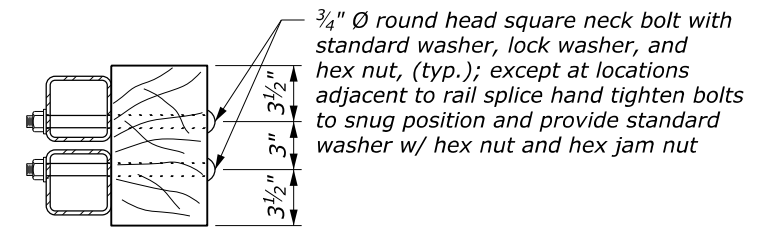
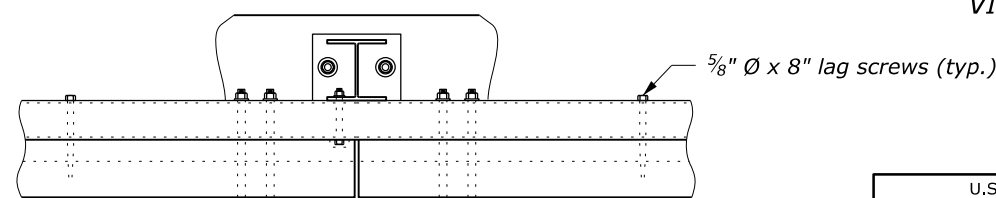
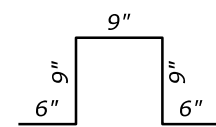
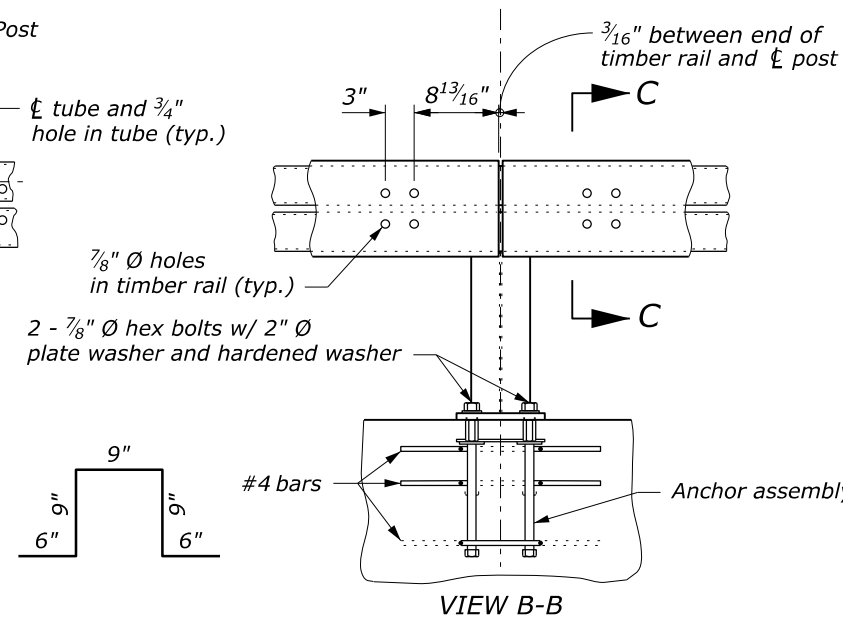
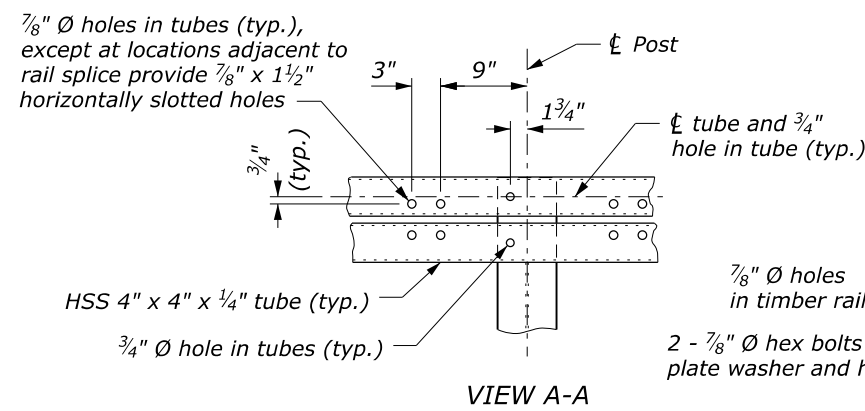
**BRIDGE RAIL ELEVATION**

**NOTE:**

1. Furnish steel for rail posts, base plates, shims, splice sleeves, and anchor assembly plates conforming to ASTM A36. Furnish structural tubing for rails conforming to ASTM A500, Grade B. Paint all metal components of the bridge rail except post base shims, anchor assemblies, and rail splice sleeves. Galvanize post base shims, anchor assemblies, and rail splice sleeves. Furnish hex bolts conforming to ASTM A325. Furnish hex coupling nuts with a center stop conforming to ASTM A563, Grade C, D, or DH. For all other fasteners conform to ASTM A307.
2. Submit fabrication drawings according to Section 555 and show rail section lengths, splice locations, rail post spacing, and fastener lengths. Fabricate steel according to Section 555 before galvanizing or painting. Weld according to Section 555.
3. Connect each HSS 4" x 4" x 1/4" tube to at least three posts between splices.
4. Erect the rail parallel to grade.

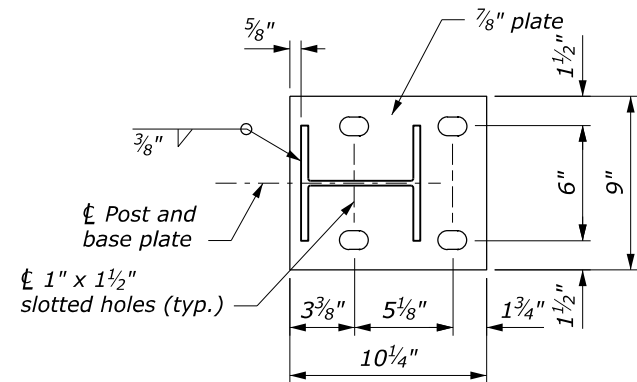


TYPICAL SECTION @ POST

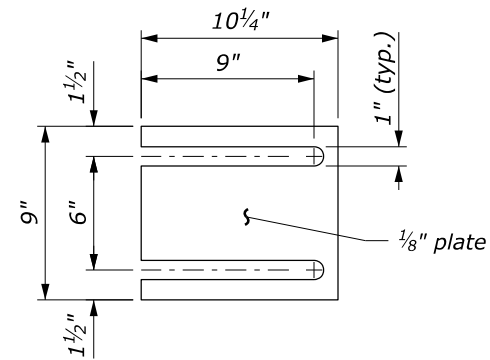


NO SCALE

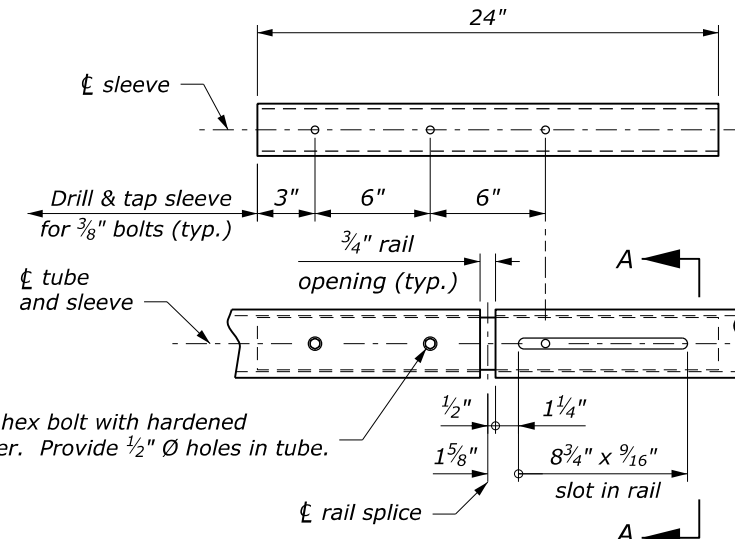
U.S. DEPARTMENT OF TRANSPORTATION, FHWA OFFICE OF FEDERAL LANDS HIGHWAY	FLH STANDARD 556-1
<b>TUBULAR STEEL-BACKED TIMBER BRIDGE RAIL</b>	SPECIFICATION FP-14
Sheet 1 of 2	APPROVED FOR USE 1/2024



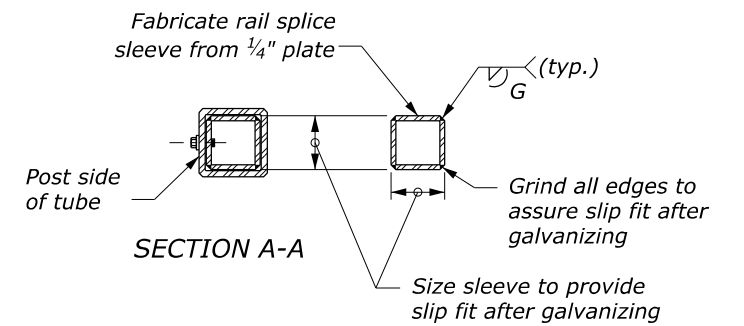
**BASE PLATE DETAIL**



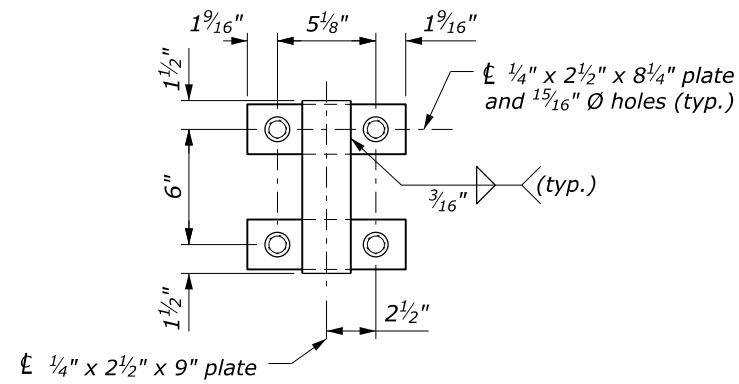
**RAIL POST BASE SHIM**



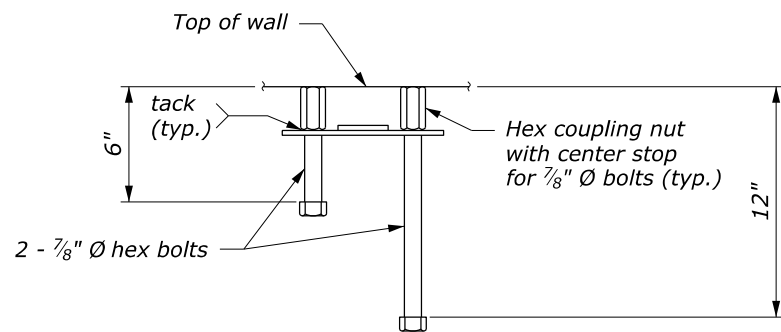
**RAIL SPLICE DETAIL**



**SLEEVE**

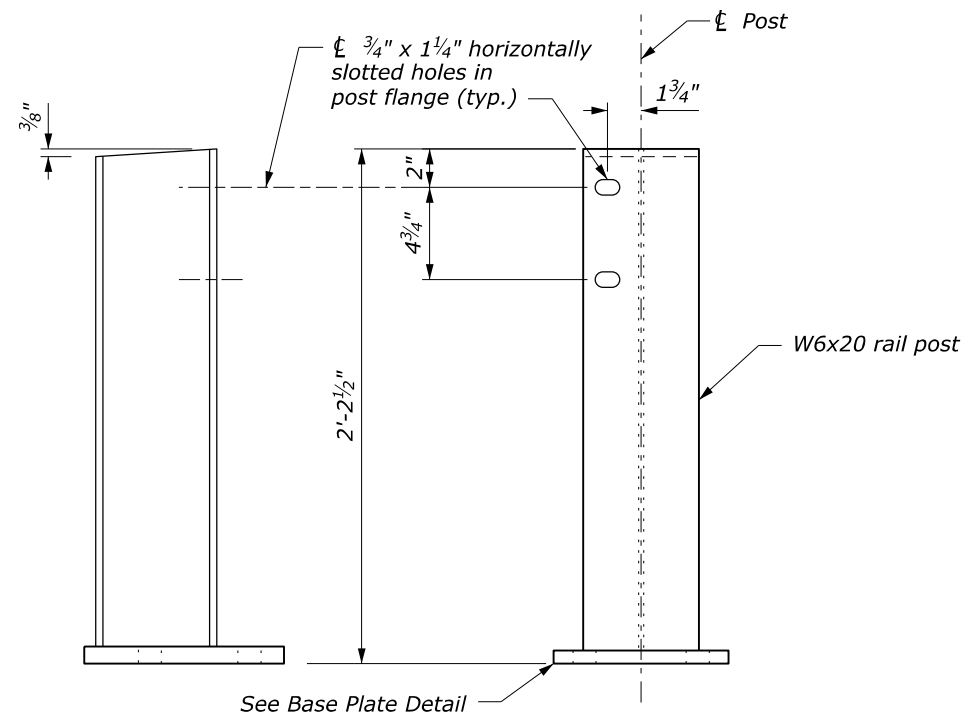


**PLAN**

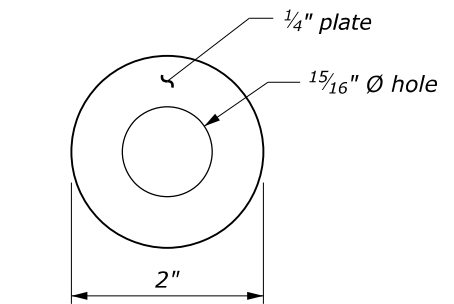


**ELEVATION**

**ANCHOR ASSEMBLY**



**POST ASSEMBLY**



**PLATE WASHER**

NO SCALE

U.S. DEPARTMENT OF TRANSPORTATION, FHWA  
OFFICE OF FEDERAL LANDS HIGHWAY

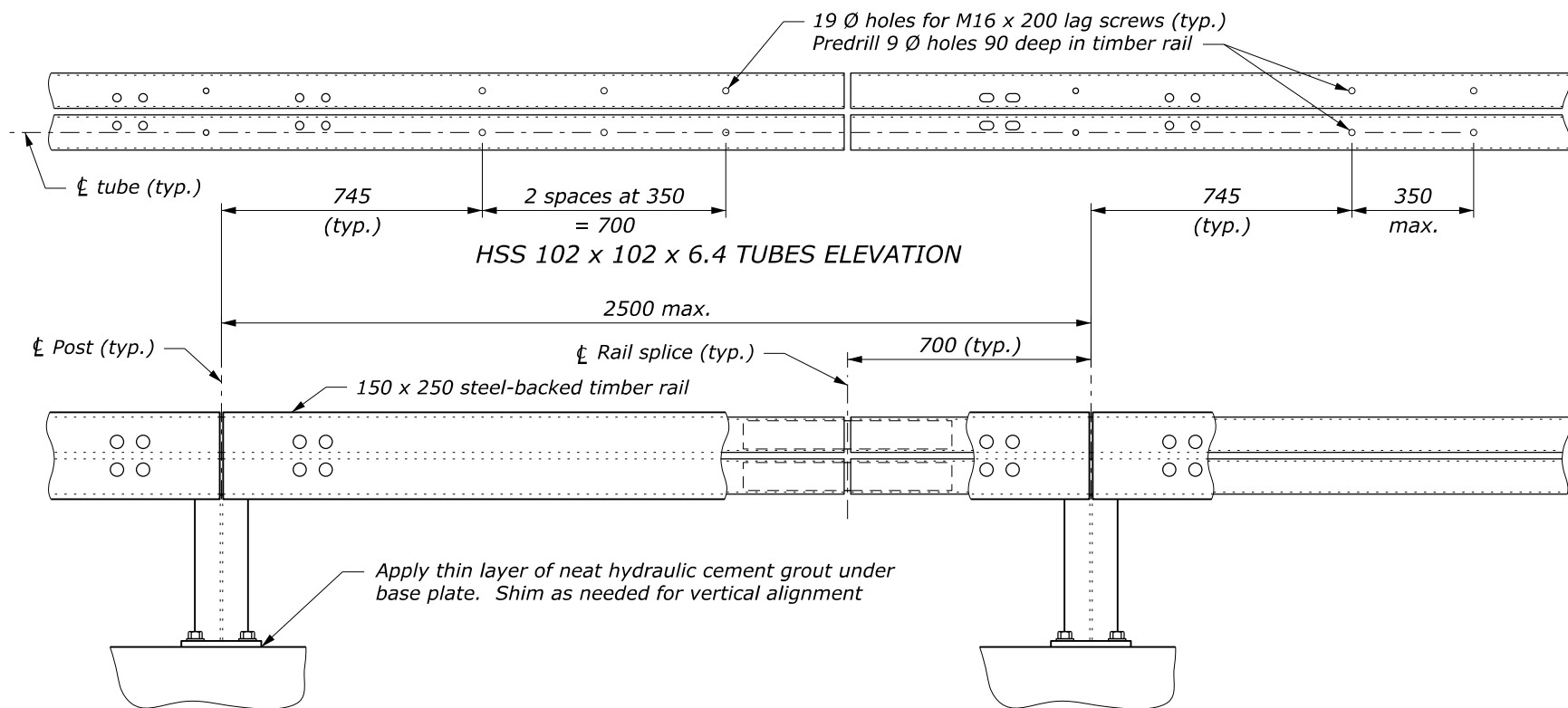
**TUBULAR STEEL-BACKED  
TIMBER BRIDGE RAIL**

Sheet 2 of 2

FLH STANDARD  
**556-1**

SPECIFICATION  
FP-14

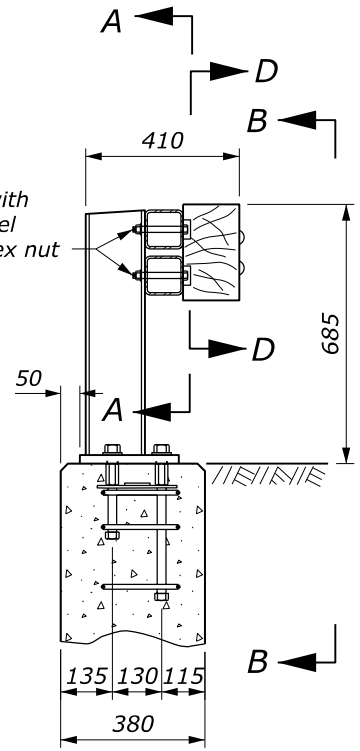
APPROVED FOR USE  
1/2024



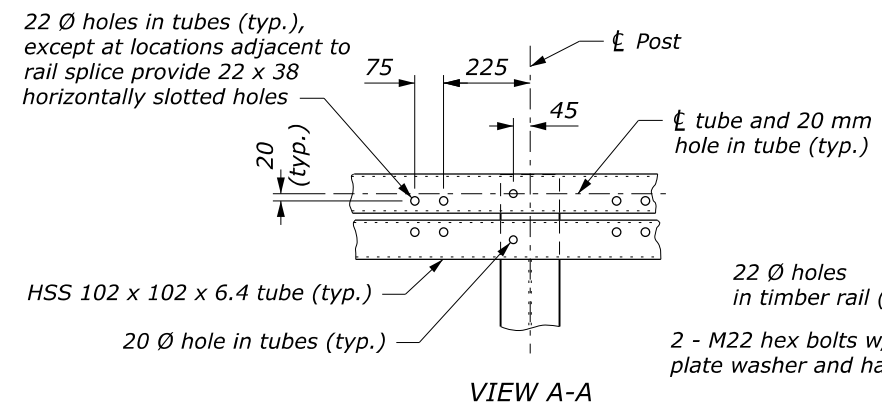
**BRIDGE RAIL ELEVATION**

**NOTE:**

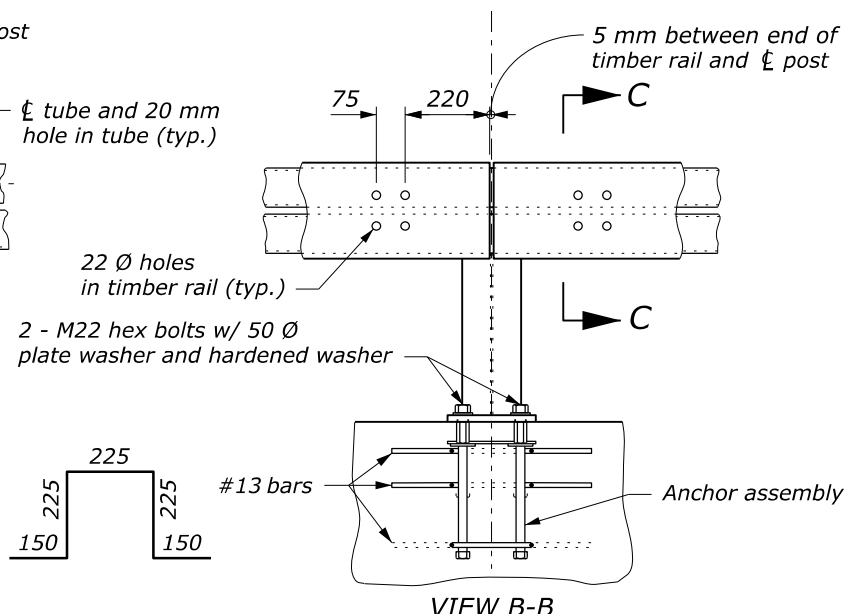
1. Furnish steel for rail posts, base plates, shims, splice sleeves, and anchor assembly plates conforming to ASTM A36. Furnish structural tubing for rails conforming to ASTM A500, Grade B. Paint all metal components of the bridge rail except post base shims, anchor assemblies, and rail splice sleeves. Galvanize post base shims, anchor assemblies, and rail splice sleeves. Furnish hex bolts conforming to ASTM A325. Furnish hex coupling nuts with a center stop conforming to ASTM A563, Grade C, D, or DH. For all other fasteners conform to ASTM A307.
2. Submit fabrication drawings according to Section 555 and show rail section lengths, splice locations, rail post spacing, and fastener lengths. Fabricate steel according to Section 555 before galvanizing or painting. Weld according to Section 555.
3. Connect each HSS 102 x 102 x 6.4 tube to at least three posts between splices.
4. Erect the rail parallel to grade.



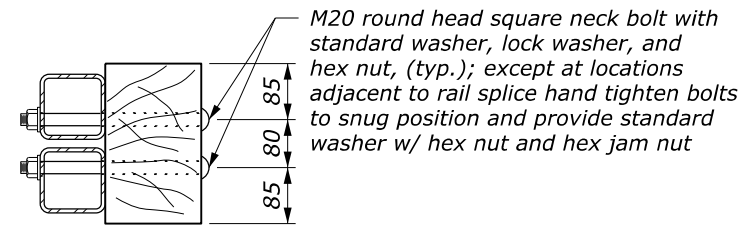
**TYPICAL SECTION @ POST**



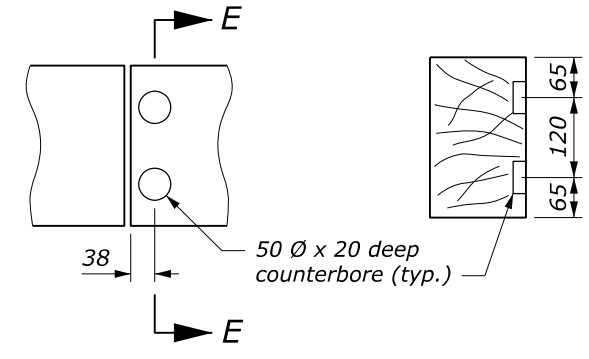
**VIEW A-A**



**VIEW B-B**

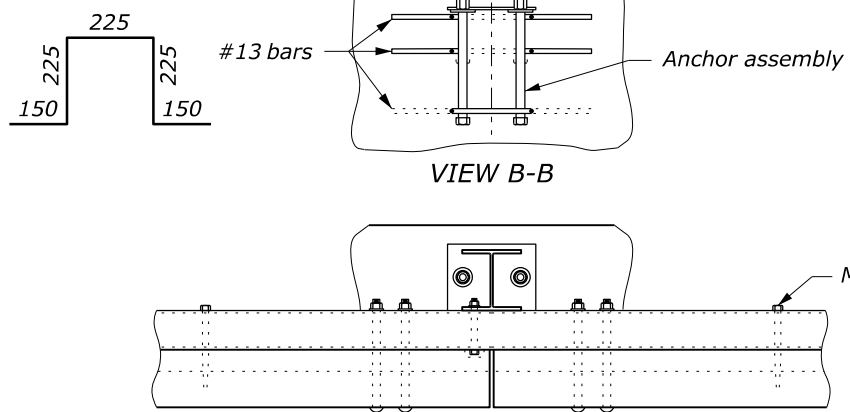


**SECTION C-C**



**VIEW D-D**

**SECTION E-E**



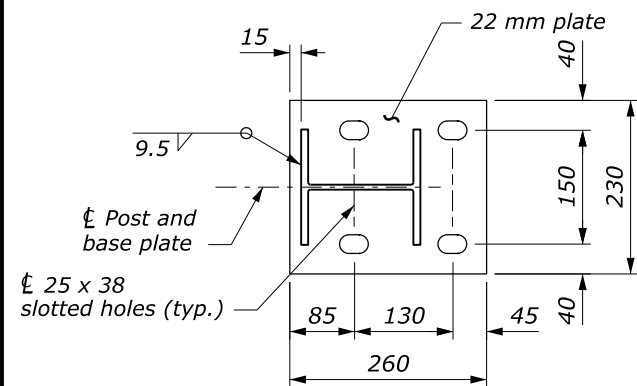
**PLAN VIEW @ POST**

This drawing contains **Metric** units of measure. Dimensions without units are millimeters.

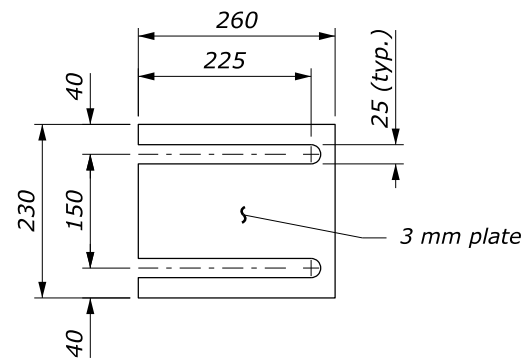
U.S. DEPARTMENT OF TRANSPORTATION, FHWA OFFICE OF FEDERAL LANDS HIGHWAY	FLH STANDARD M556-1
<b>TUBULAR STEEL-BACKED TIMBER BRIDGE RAIL</b>	SPECIFICATION FP-14
Sheet 1 of 2	APPROVED FOR USE 1/2024

NO SCALE

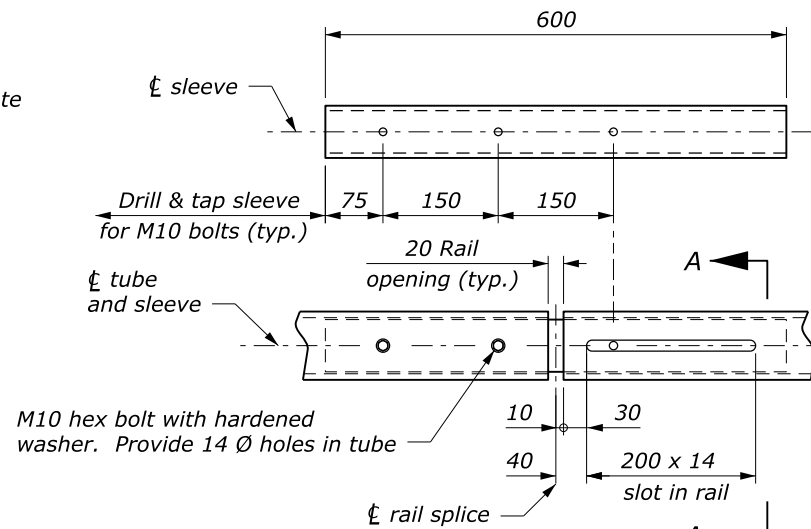
c:\pwwork\0413403\Std556-1fp14.dgn (Std M556-1a) 30 May 2024 8:41 AM



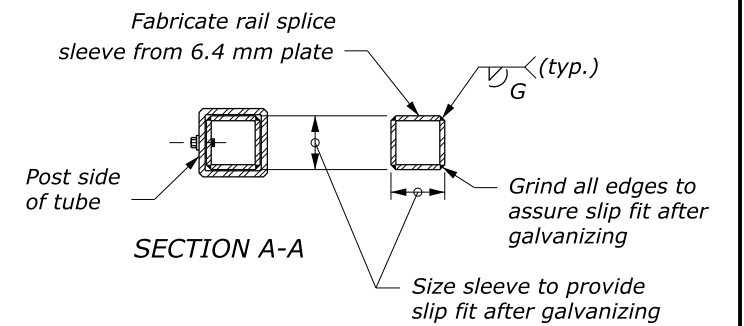
**BASE PLATE DETAIL**



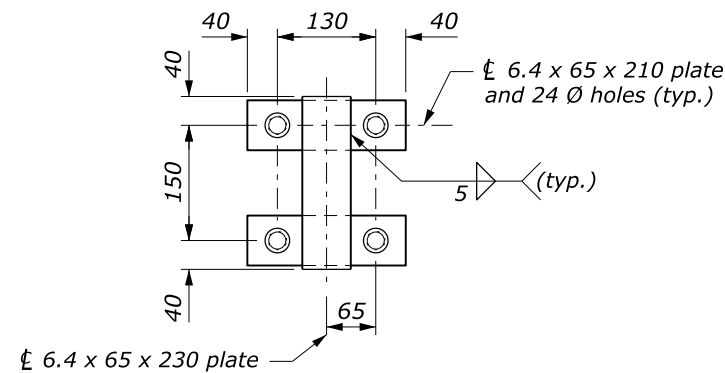
**RAIL POST BASE SHIM**



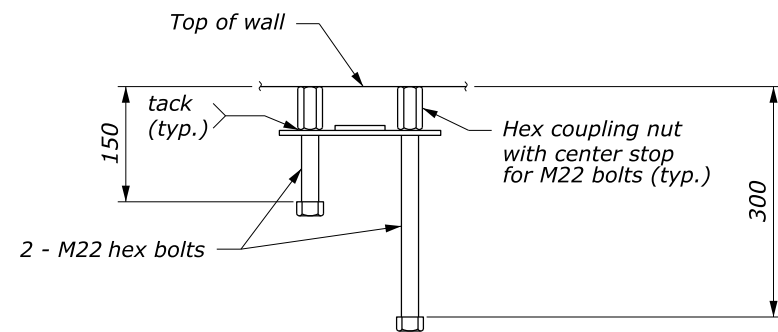
**RAIL SPLICE DETAIL**



**SLEEVE**

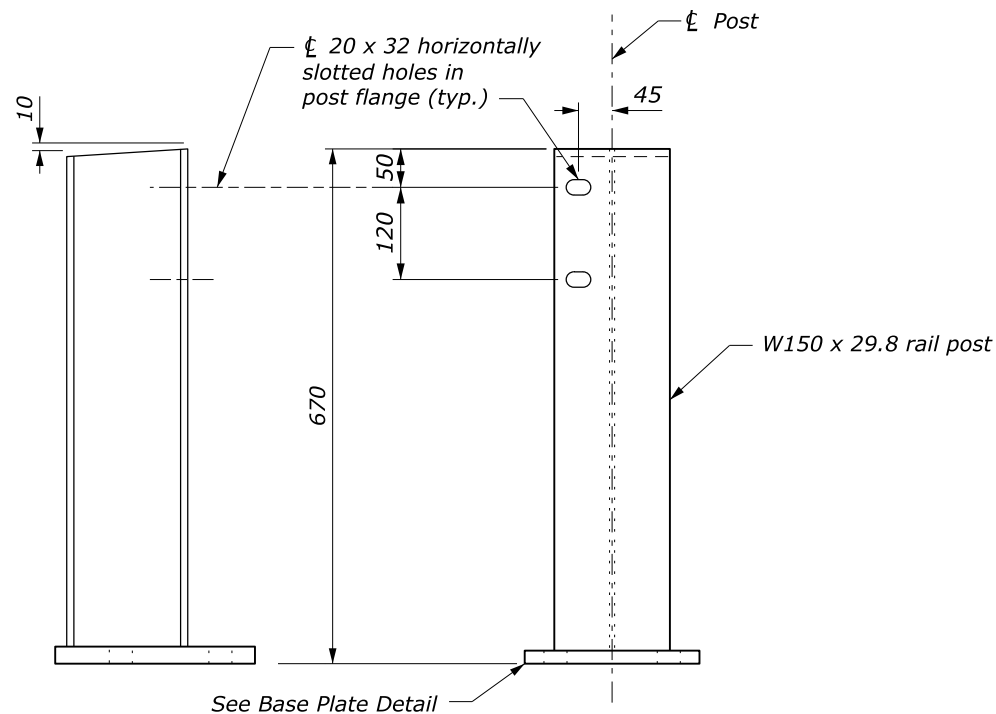


**PLAN**

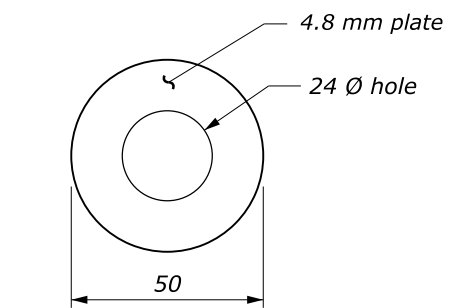


**ELEVATION**

**ANCHOR ASSEMBLY**



**POST ASSEMBLY**



**PLATE WASHER**

This drawing contains **Metric** units of measure. Dimensions without units are millimeters.

NO SCALE

U.S. DEPARTMENT OF TRANSPORTATION, FHWA OFFICE OF FEDERAL LANDS HIGHWAY	FLH STANDARD M556-1
<b>TUBULAR STEEL-BACKED TIMBER BRIDGE RAIL</b>	SPECIFICATION FP-14
Sheet 2 of 2	APPROVED FOR USE 1/2024