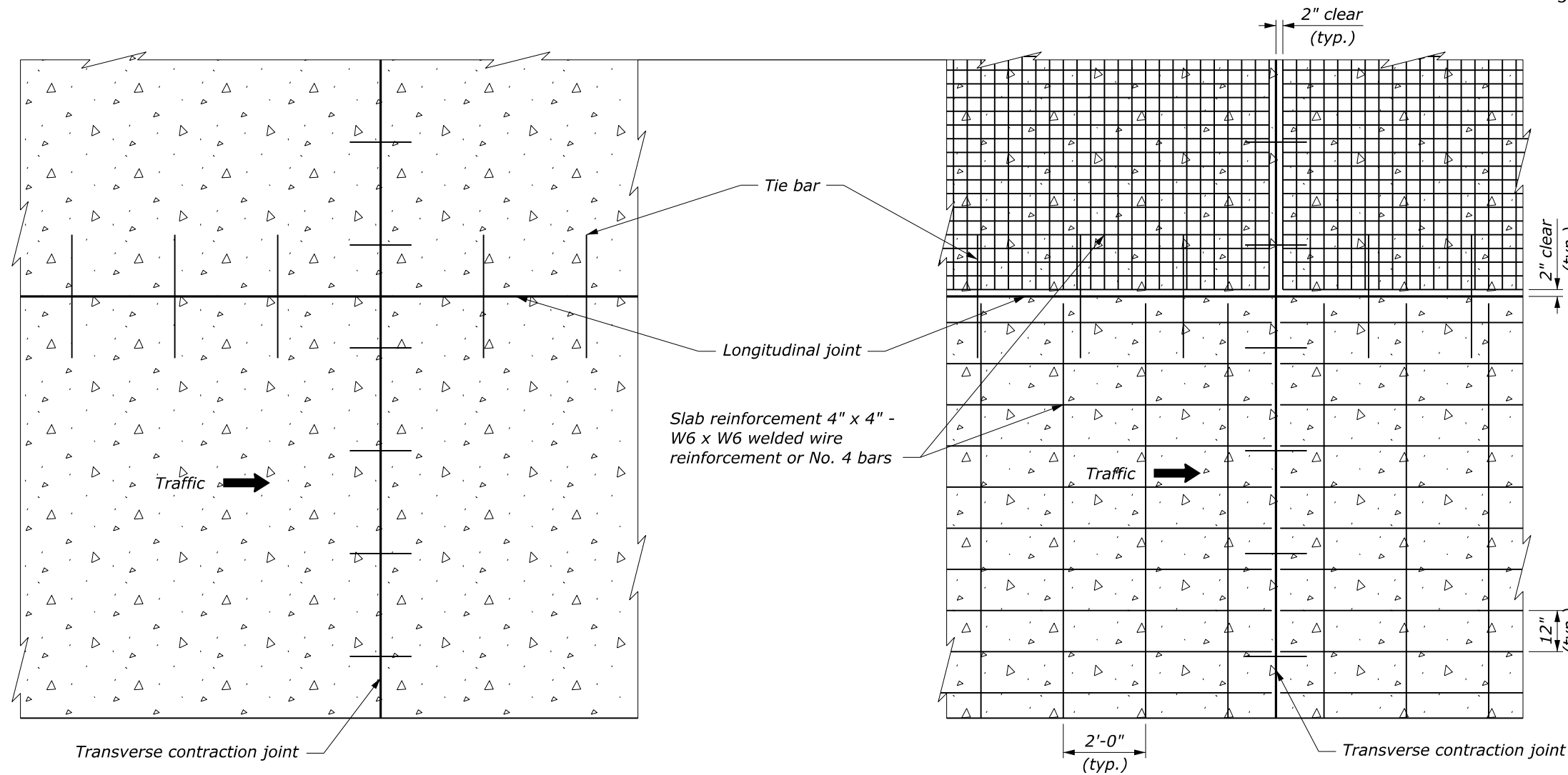
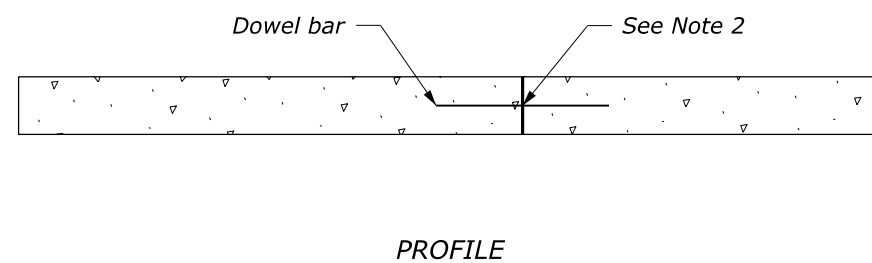


NOTE:

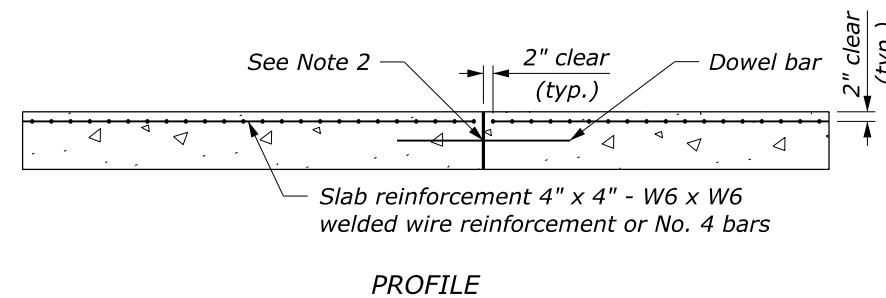
1. Provide the same type of dowel assemblies and tie bars for joints in plain minor concrete pavement as shown for joints in reinforced pavement.
2. See Standard 501-2 for joint and joint sealing details.
3. Lap longitudinal and transverse reinforcement not less than 15 inches.



PAVEMENT THICKNESS (in)	TRANSVERSE JOINT SPACING (ft)
$T < 6$	10
$6 \leq T < 12$	15



PLAIN MINOR CONCRETE PAVEMENT



REINFORCED MINOR CONCRETE PAVEMENT

NO SCALE

U.S. DEPARTMENT OF TRANSPORTATION, FHWA
OFFICE OF FEDERAL LANDS HIGHWAY

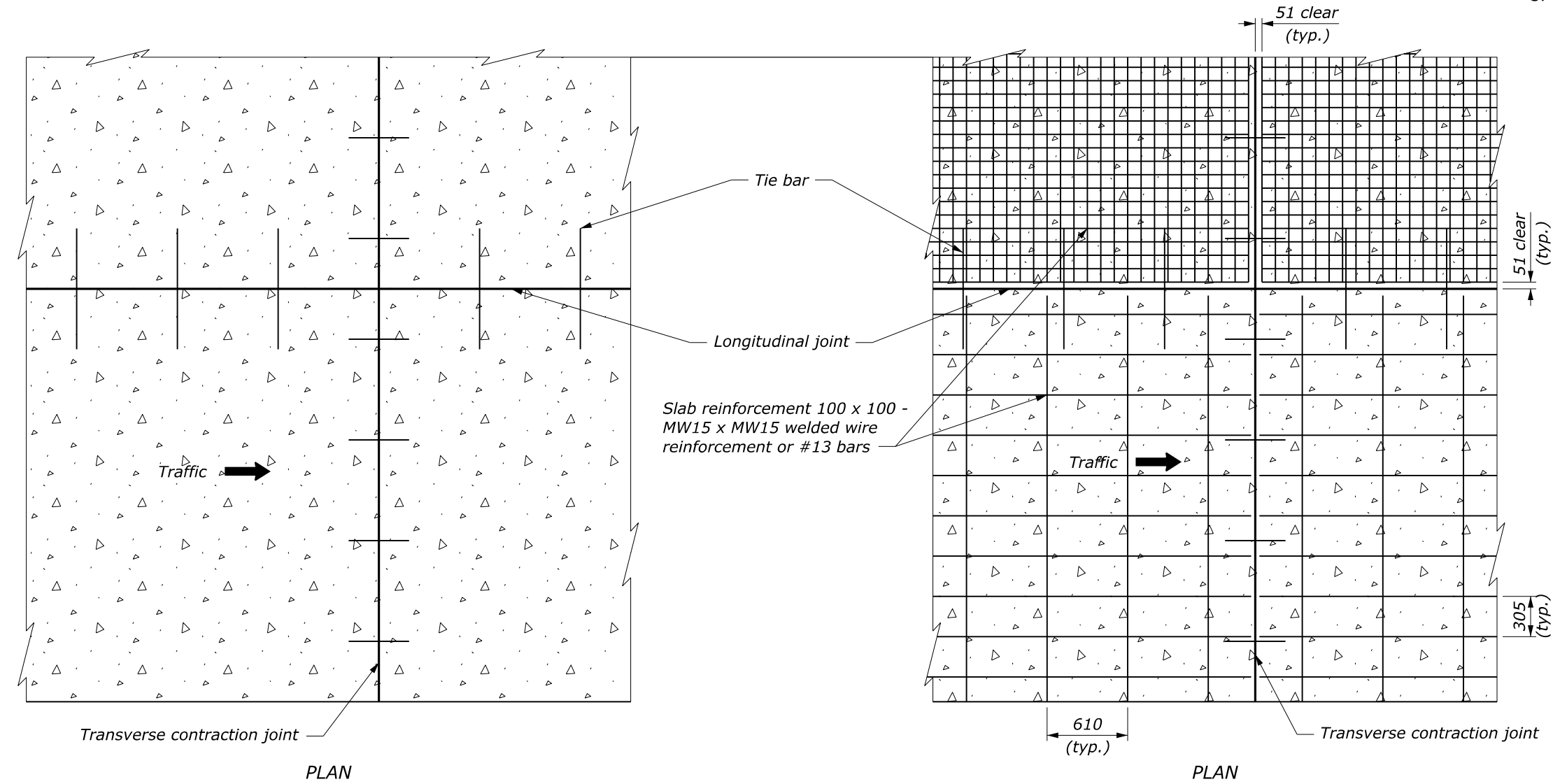
FLH STANDARD
501-1

MINOR CONCRETE PAVEMENT

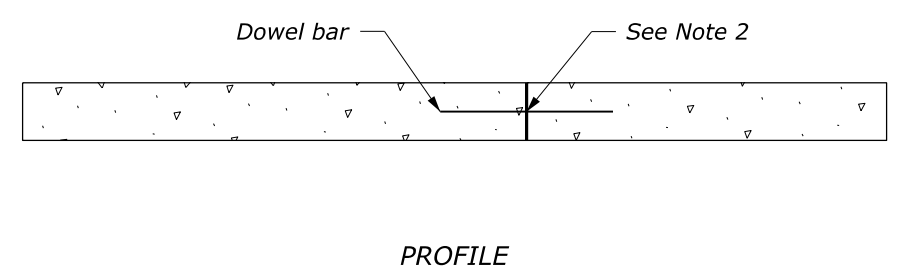
SPECIFICATION
FP-24, FP-14
APPROVED FOR USE
1/2024

NOTE:

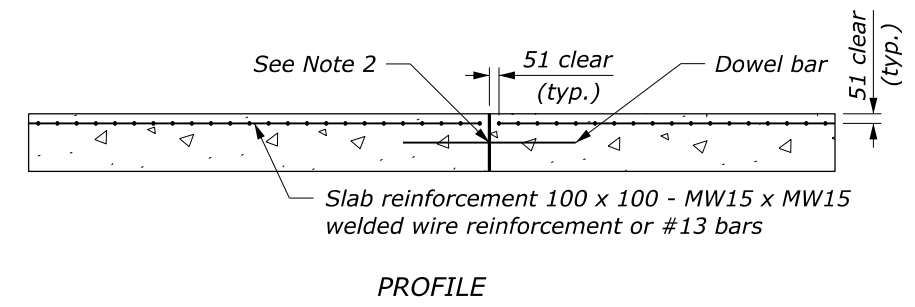
1. Provide the same type of dowel assemblies and tie bars for joints in plain minor concrete pavement as shown for joints in reinforced pavement.
2. See Standard M501-2 for joint and joint sealing details.
3. Lap longitudinal and transverse reinforcement not less than 380 mm.



PAVEMENT THICKNESS (mm)	TRANSVERSE JOINT SPACING (m)
$T < 150$	3
$150 \leq T < 300$	4.5



PLAIN MINOR CONCRETE PAVEMENT



REINFORCED MINOR CONCRETE PAVEMENT

This drawing contains **Metric** units of measure. Dimensions without units are millimeters.

U.S. DEPARTMENT OF TRANSPORTATION, FHWA OFFICE OF FEDERAL LANDS HIGHWAY	FLH STANDARD M501-1
MINOR CONCRETE PAVEMENT	SPECIFICATION FP-24, FP-14
	APPROVED FOR USE 1/2024

NO SCALE