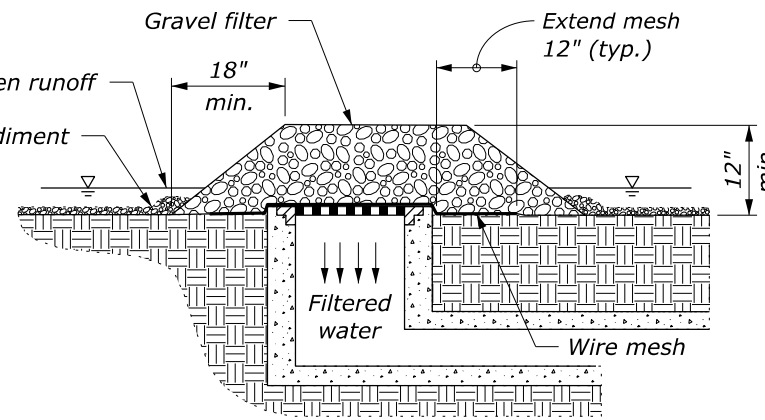


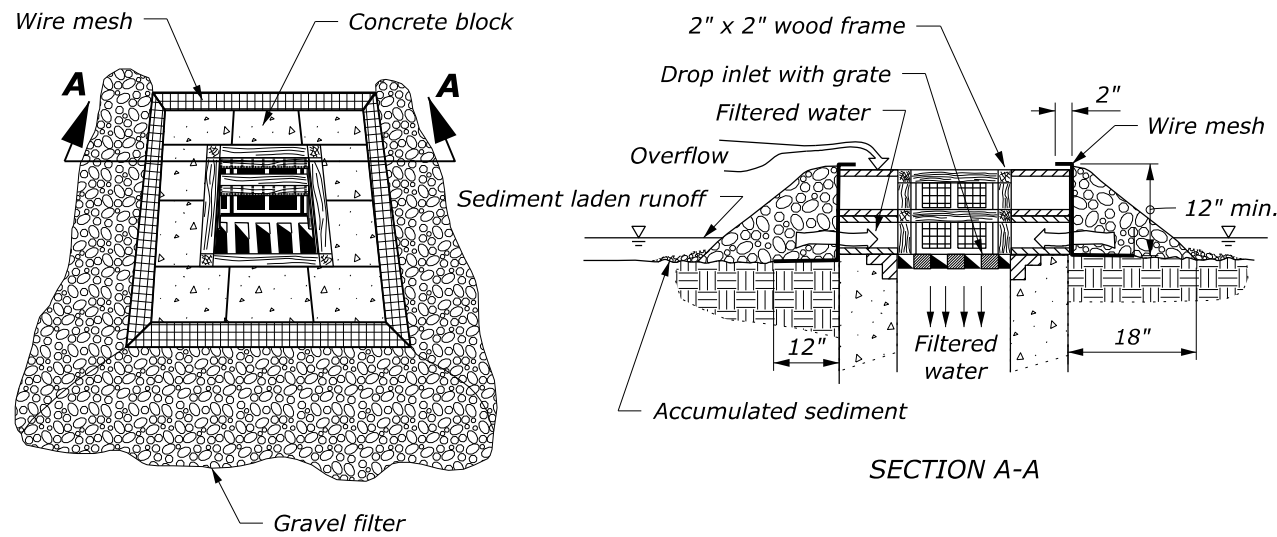
SILT FENCE DROP INLET PROTECTION (TYPE A)



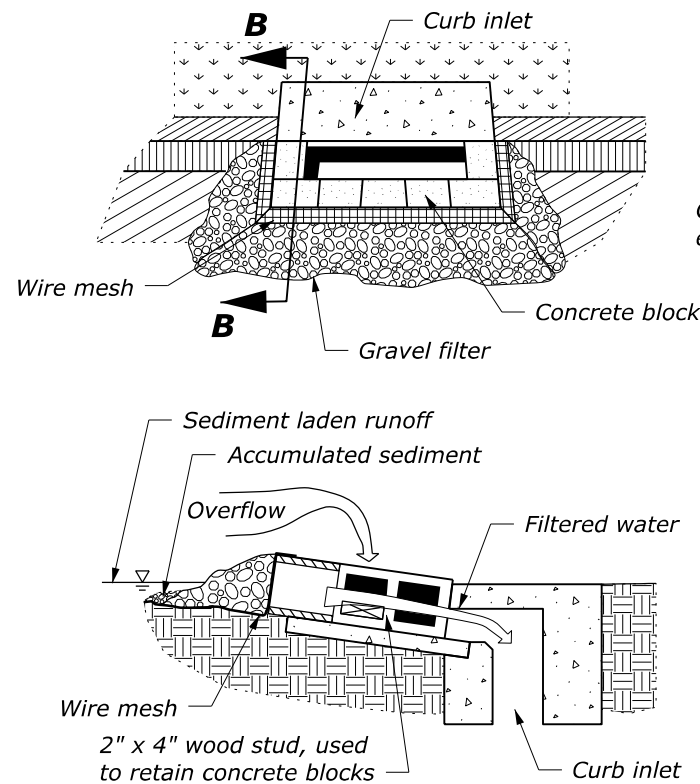
GRAVEL AND WIRE MESH DROP INLET PROTECTION (TYPE B)

NOTE:

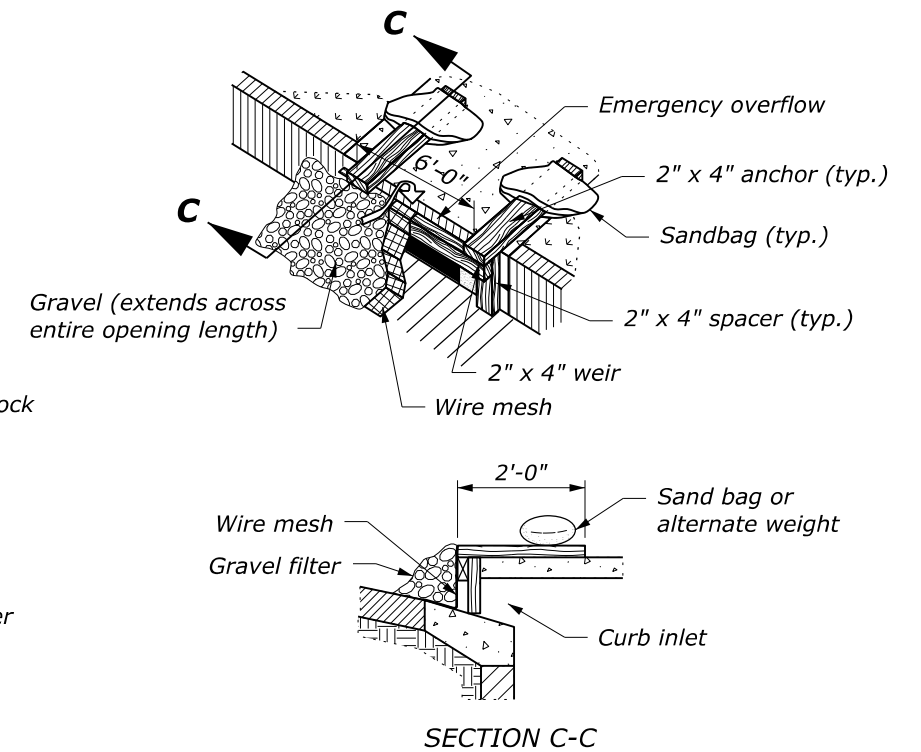
1. For gravel filters use 2" to 3" diameter coarse aggregate.
2. Use wire mesh with 1/2" x 1/2" openings.
3. Use type A inlet protection in sump locations only.
4. Use type B inlet protection only in sump locations where heavy concentrated flows are not expected. Do not use where ponding around the structure might cause inconvenience or damage.
5. Provide silt fence drop inlet protection geotextile conforming to subsection 713.16(a).



BLOCK AND GRAVEL DROP INLET PROTECTION (TYPE C)



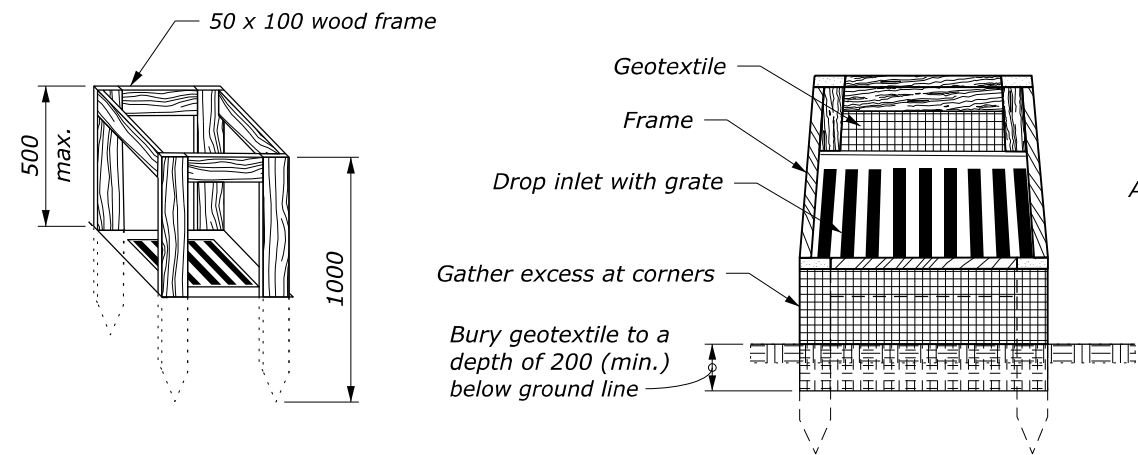
SECTION B-B
CURB INLET PROTECTION, BLOCK AND GRAVEL (TYPE D)



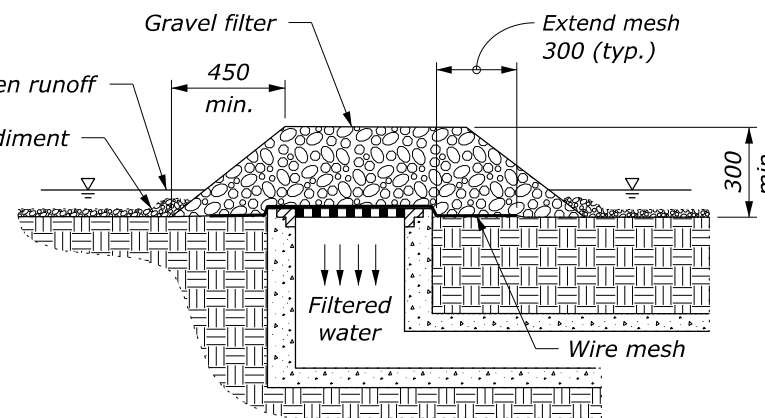
SECTION C-C
CURB INLET PROTECTION, WOODEN WEIR (TYPE E)

NO SCALE

U.S. DEPARTMENT OF TRANSPORTATION, FHWA OFFICE OF FEDERAL LANDS HIGHWAY	FLH STANDARD 157-2
TEMPORARY INLET PROTECTION	SPECIFICATION FP-24, FP-14 APPROVED FOR USE 1/2024



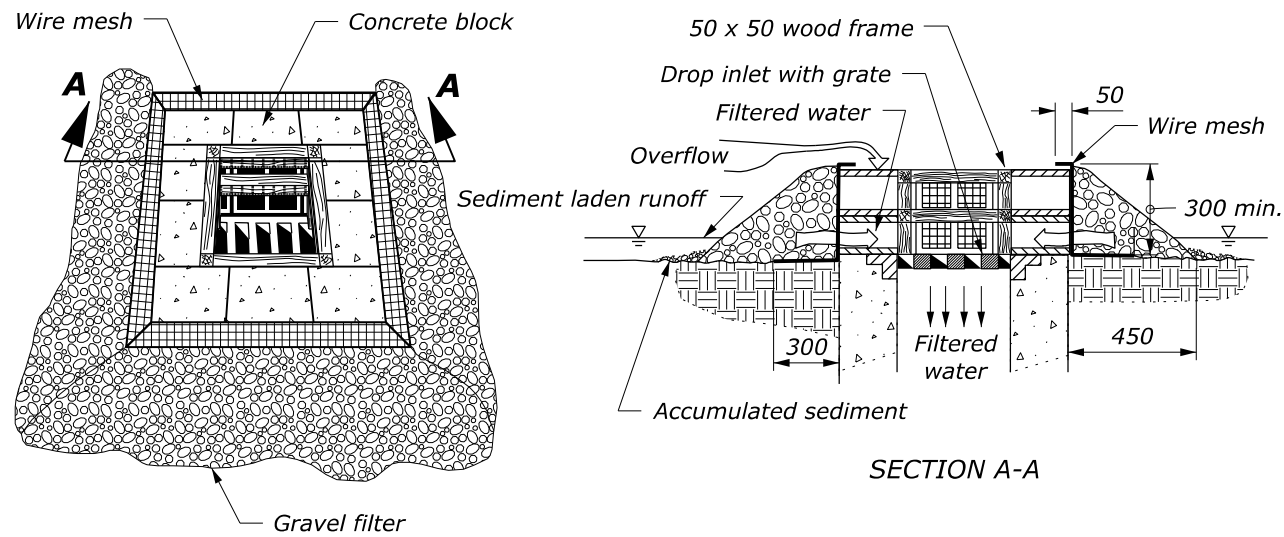
SILT FENCE DROP INLET PROTECTION (TYPE A)



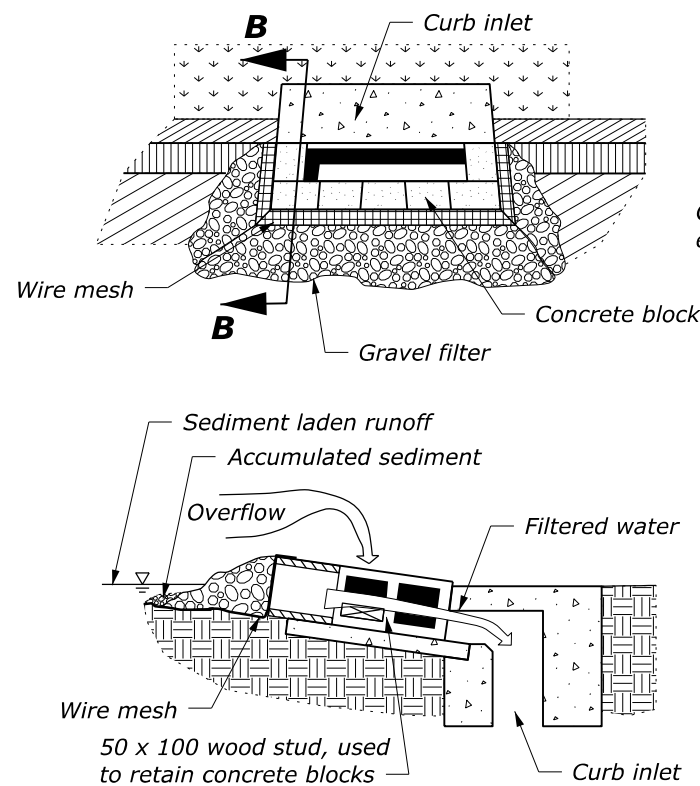
GRAVEL AND WIRE MESH DROP INLET PROTECTION (TYPE B)

NOTE:

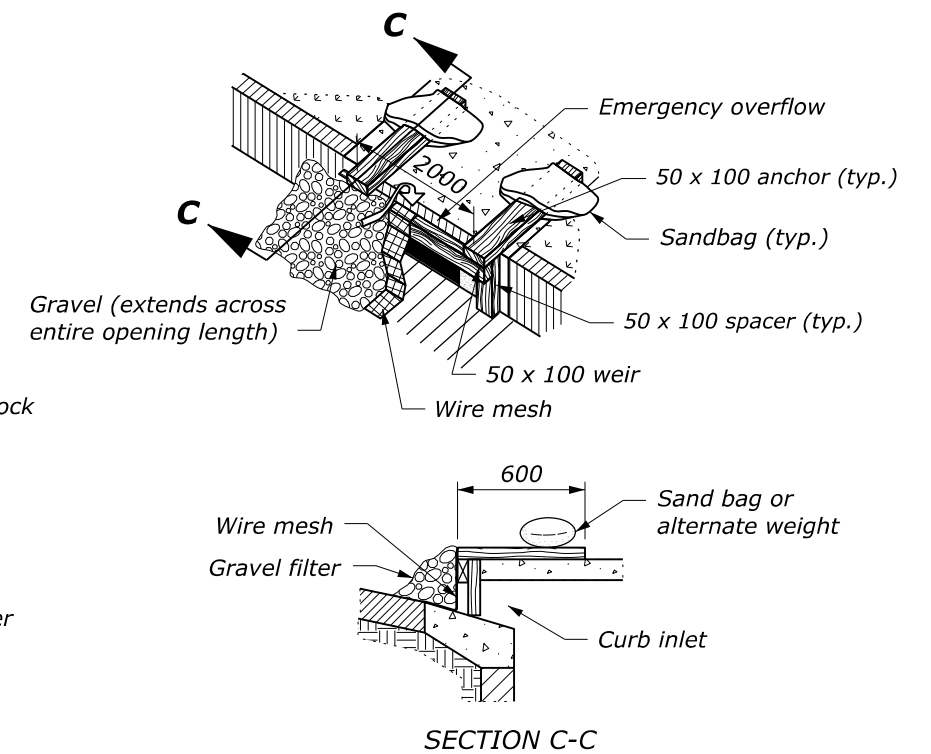
1. For gravel filters use 50 to 75 mm diameter coarse aggregate.
2. Use wire mesh with 12 x 12 mm openings.
3. Use type A inlet protection in sump locations only.
4. Use type B inlet protection only in sump locations where heavy concentrated flows are not expected. Do not use where ponding around the structure might cause inconvenience or damage.
5. Provide silt fence drop inlet protection geotextile conforming to subsection 713.16(a).



BLOCK AND GRAVEL DROP INLET PROTECTION (TYPE C)



SECTION B-B
CURB INLET PROTECTION, BLOCK AND GRAVEL (TYPE D)



SECTION C-C
CURB INLET PROTECTION, WOODEN WEIR (TYPE E)

This drawing contains **Metric** units of measure. Dimensions without units are millimeters.

U.S. DEPARTMENT OF TRANSPORTATION, FHWA OFFICE OF FEDERAL LANDS HIGHWAY	FLH STANDARD M157-2
TEMPORARY INLET PROTECTION	SPECIFICATION FP-24, FP-14
	APPROVED FOR USE 1/2024

NO SCALE