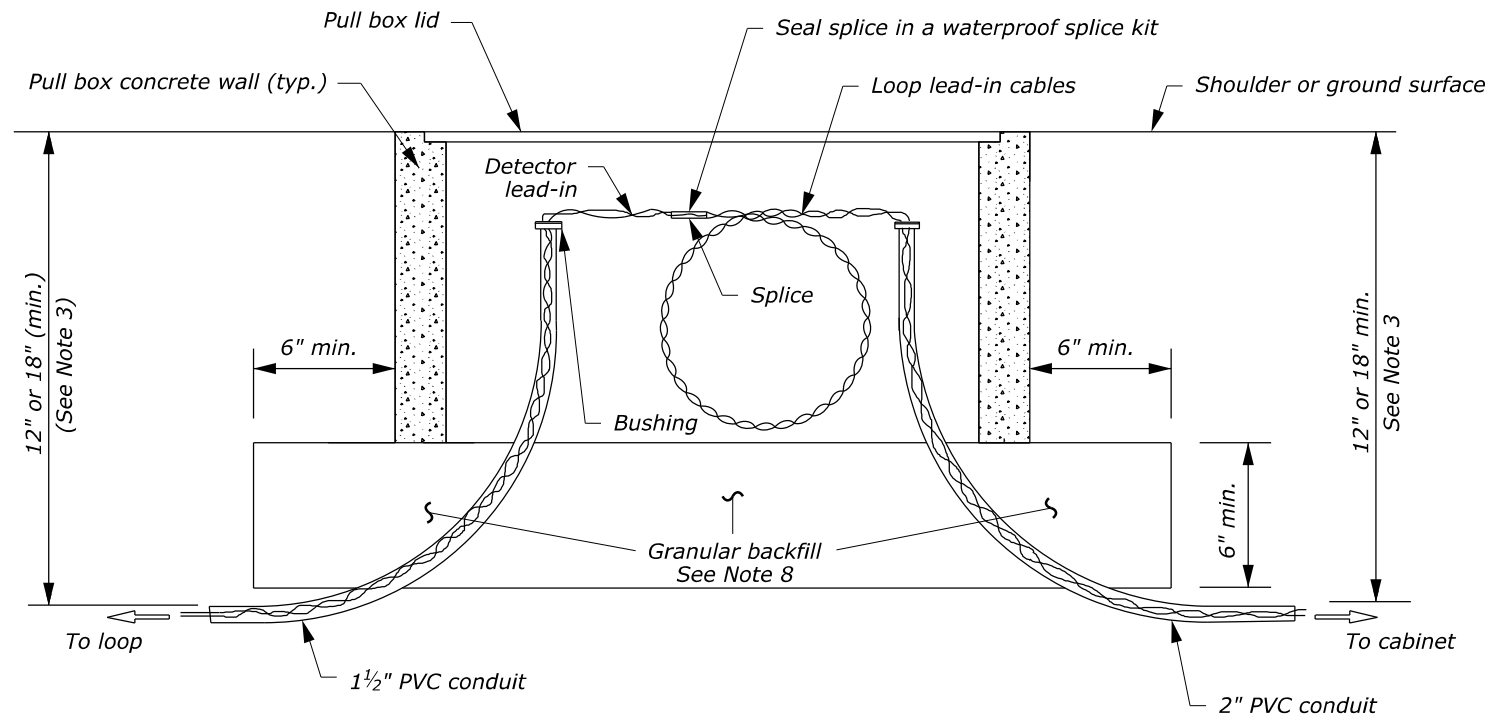


NOTES:

1. Install pull boxes flush with the shoulder surface. Restore the disturbed area around the pull box and conduit installations.
2. On long runs, install pull boxes such that each box is separated by no more than 150 feet.
3. If cabinet is located more than 30 feet from the edge of travelway, provide a minimum cover of 12 inches. Otherwise, provide a minimum cover of 18 inches.
4. Terminate stranded conductors smaller than #14 AWG with crimp style terminal lugs.
5. Size pull box according to the National Electric Code (NEC) as approved.
6. Ensure splices occur only in pull box nearest to the inductive loops.
7. Plug conduits and bushings with steel wool to prevent rodent entry and with a water resistant material to prevent moisture entry.
8. Provide granular backfill conforming to AASHTO M 80, Class E and AASHTO M 43, Size Number 57 or 67.

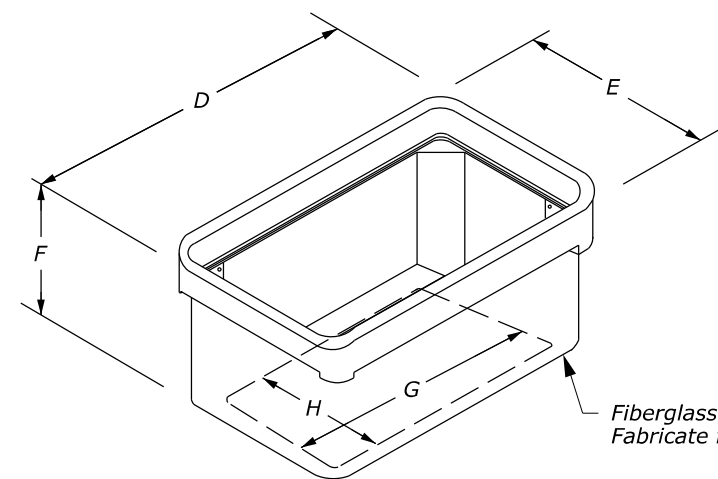
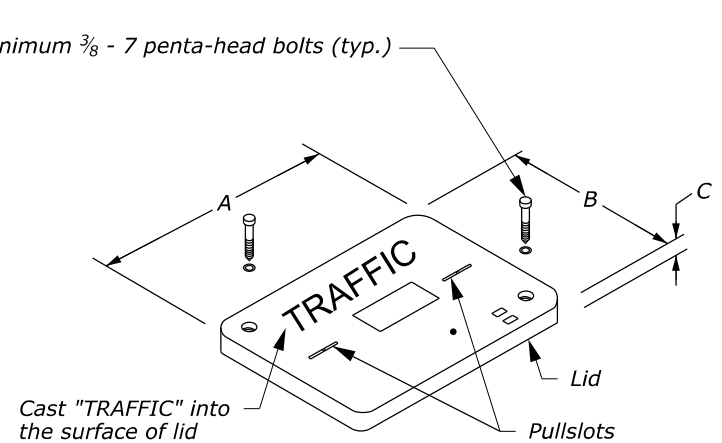


PULL BOX INSTALLATION

PULL BOX DIMENSIONS TABLE

TYPE	MINIMUM DIMENSIONS INCH							
	(A)	(B)	(C)	(D)	(E)	(F)	(G)	(H)
1	15 3/8	10	1 3/4	17 5/8	12 3/8	12	13 5/8	8 3/8
2	12 7/8	12 7/8	1 3/4	14 3/4	14 3/4	12	12	12
3	18 1/8	11 1/4	1 3/4	20 1/4	13 3/8	12	15 3/4	8 7/8
4	23 1/4	13 3/4	2	25	15 1/2	12	19 1/4	9 3/4

Minimum 3/8" - 7 penta-head bolts (typ.)



PULL BOX ISOMETRIC VIEW

U.S. DEPARTMENT OF TRANSPORTATION, FHWA
OFFICE OF FEDERAL LANDS HIGHWAY

EFLHD DETAIL
E636-04

**INDUCTIVE LOOP
PULL BOX**

SPECIFICATION
FP-24, FP-14

APPROVED FOR USE
06/2024

NO SCALE