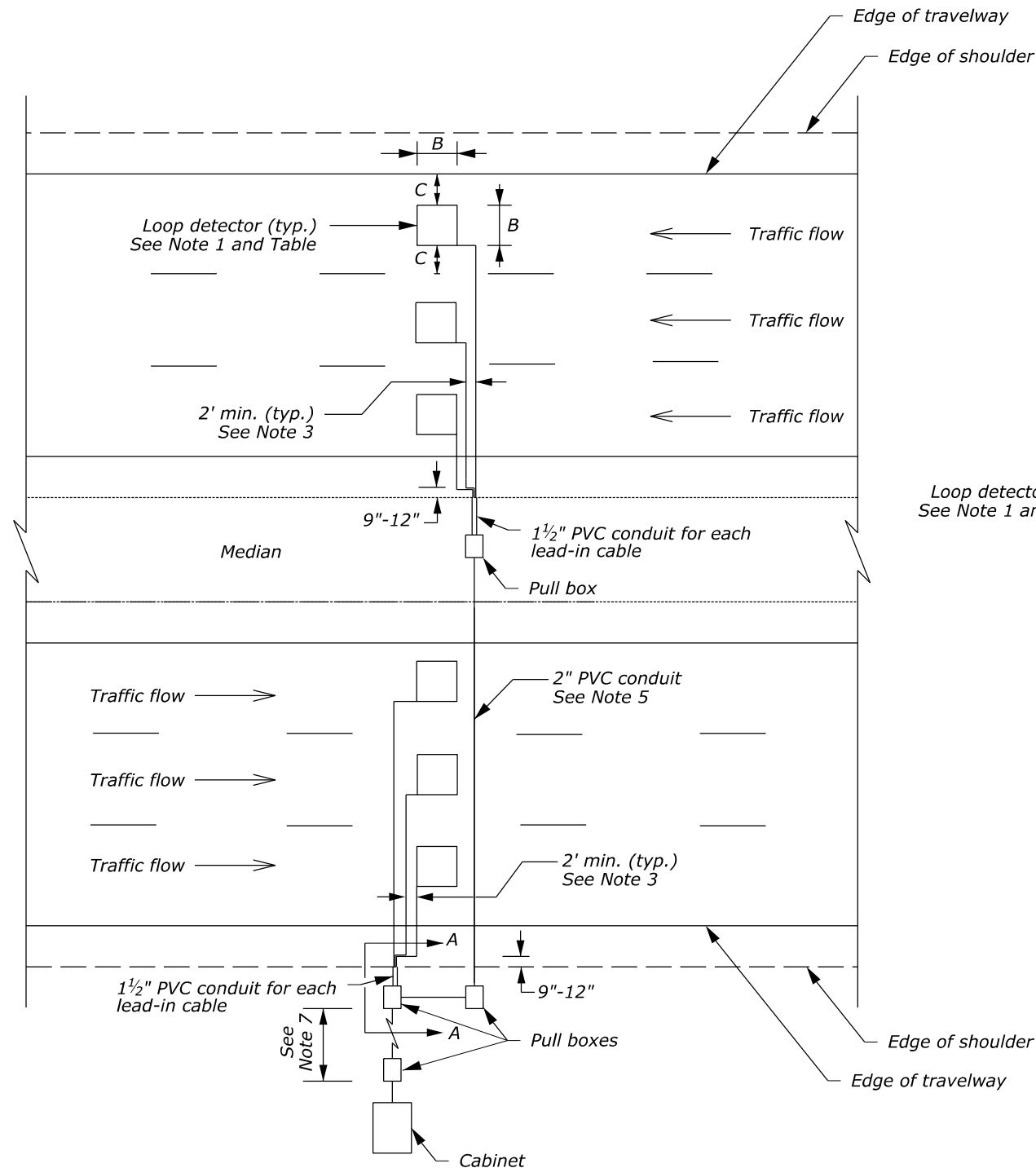


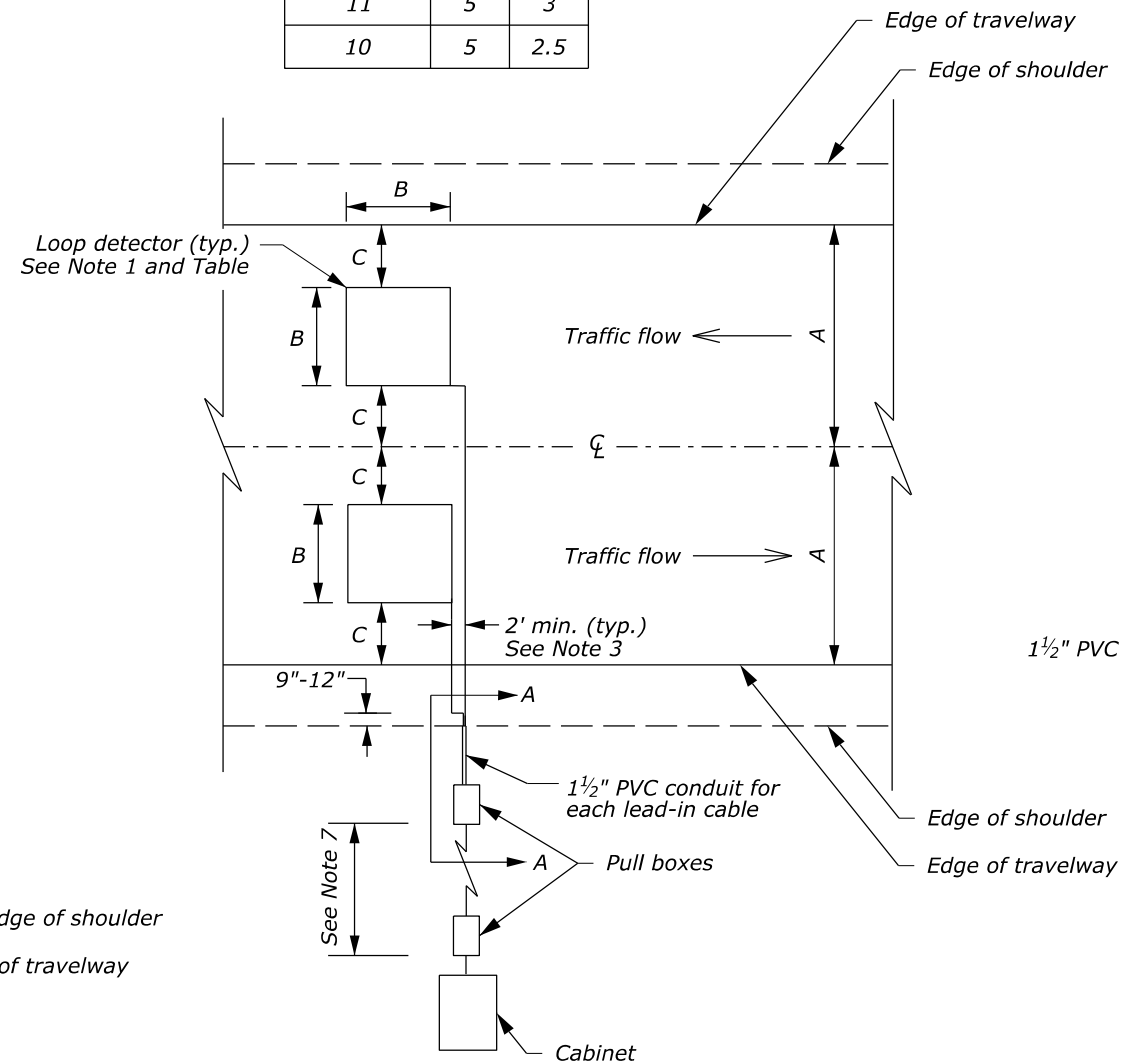
**NOTES:**

1. Install square inductive loops, with sides perpendicular and parallel to the centerline.
2. For each loop, install the loop wire in one continuous length with no splices.
3. Provide dedicated saw cuts for each loop, including separate lead-in channels.
4. Provide dedicated polyvinyl chloride (PVC) conduits for each lead-in from the edge of pavement to the nearest pull box.
5. Install the 2-inch PVC conduit using directional boring or open trench as directed.
6. Obtain approval from the CO prior to installing inductive loops on lanes less than 10 feet wide.
7. If the distance between pull boxes is less than 50 feet, omit the second pull box nearest to the cabinet.
8. See Detail E636-03 for inductive loop installation procedures.

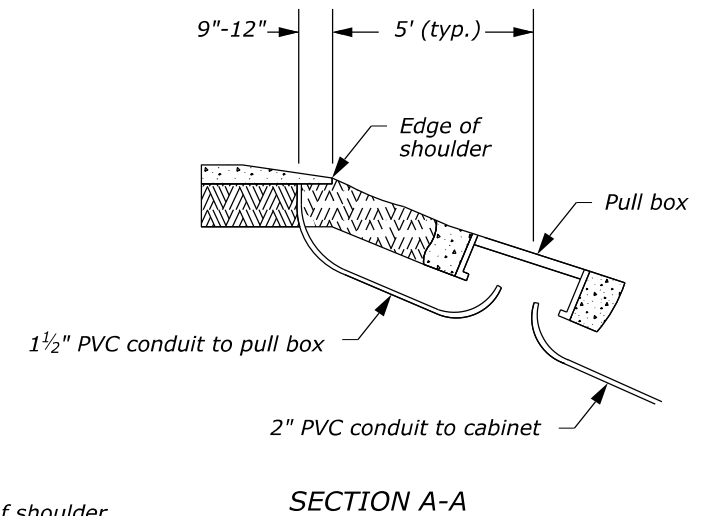
LANE WIDTH LNFT (A)	DIMENSIONS LNFT	
	(B)	(C)
12	6	3
11	5	3
10	5	2.5



MULTI-LANE DIVIDED ROADWAY



UNDIVIDED ROADWAY



SECTION A-A

**INDUCTIVE LOOP INSTALLATION  
PLAN VIEW**

NO SCALE

U.S. DEPARTMENT OF TRANSPORTATION, FHWA OFFICE OF FEDERAL LANDS HIGHWAY	EFLHD DETAIL E636-01
<b>INDUCTIVE LOOP SINGLE LOOP PER LANE</b>	SPECIFICATION FP-24, FP-14
	APPROVED FOR USE 06/2024