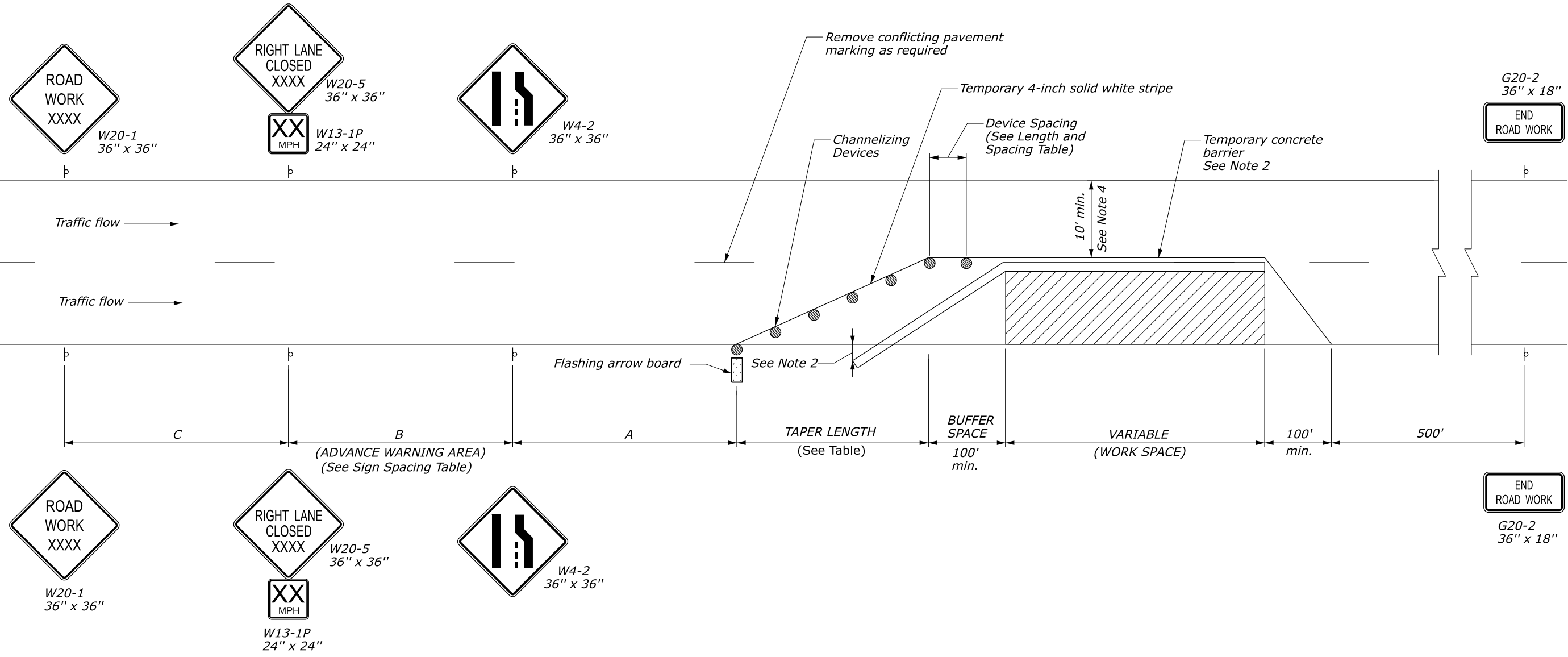


**TYPICAL APPLICATION: ONE WAY, TWO LANE ROADWAY, CLOSING ONE LANE, USING TEMPORARY BARRIER**



**LENGTH AND SPACING TABLE**

APPROACH SPEED* (MPH)	MINIMUM TAPER LENGTH (LNFT)			CHANNELIZING DEVICE SPACING (LNFT)		CONCRETE BARRIER FLARE RATE
	LANE WIDTH (LNFT)			TAPER AREA	WORK AREA	
	10	11	12			
25	105	115	125	25	50	6.5 : 1
30	150	165	180	30	60	8 : 1
35	205	225	245	35	70	9.3 : 1
40	270	295	320	40	80	10.6 : 1
45	450	495	540	45	90	12 : 1
50	500	550	600	50	100	13.5 : 1
55	550	605	660	55	100	15 : 1

\* Approach speed based on the regulatory posted speed, not the advisory speed.

**SIGN SPACING TABLE**

POSTED SPEED LIMIT (MPH)	DISTANCE BETWEEN SIGNS (LNFT)		
	(A)	(B)	(C)
≤ 35	200	200	200
40 - 50	350	350	350
55	500	500	500
Expressway / Urban Parkway	1000	1600	2600

**NOTES:**

- Final location and spacing of temporary traffic control devices may be changed to fit field conditions as approved.
- Place barrier according to the AASHTO Roadside Design Guide, latest edition. Terminate barrier ends outside the clearzone or protect the ends of barrier with a crash cushion. Mount reflectors on barriers at 25-foot intervals.
- Right lane closure is shown. For left lane closure, substitute with W20-5 and W4-2 left lane closure signs.
- Use minimum width shown unless otherwise specified in Section 156.

U.S. DEPARTMENT OF TRANSPORTATION, FHWA  
OFFICE OF FEDERAL LANDS HIGHWAY

**TEMPORARY TRAFFIC CONTROL SINGLE LANE CLOSURE LAYOUT (WITH TEMPORARY CONCRETE BARRIER)**

EFLHD DETAIL  
**E635-12**

SPECIFICATION  
FP-24, FP-14

APPROVED FOR USE  
06/2024

NO SCALE