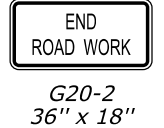
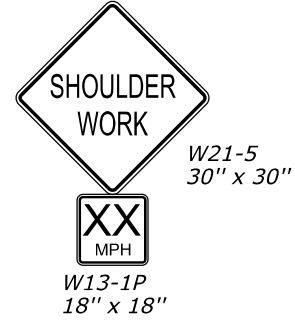
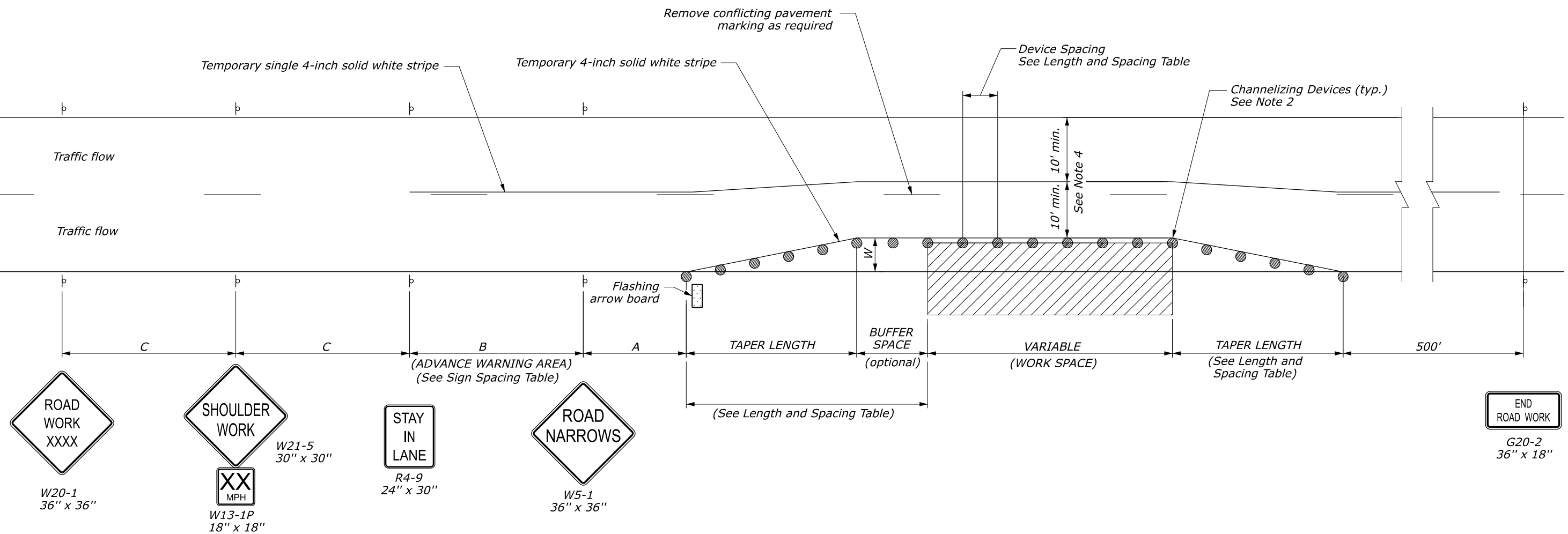


TYPICAL APPLICATION: ONE WAY, TWO LANE ROADWAY, CLOSING PARTIAL LANE WIDTH AND SHOULDER



LENGTH AND SPACING TABLE

APPROACH SPEED* (MPH)	MINIMUM TAPER LENGTH (LNFT)	BUFFER SPACE LENGTH (LNFT)	CHANNELIZING DEVICE SPACING (LNFT)		
			TAPER AREA	BUFFER SPACE	WORK SPACE
20	Shifting taper formula: $L = \frac{WS^2}{120}$ for $S \leq 40$ MPH	115	20	40	40
25		155	25	50	50
30	$L = \frac{WS}{2}$ for $S \geq 45$ MPH Where: L = Minimum length of taper W = Width of offset in feet S = Numerical value of posted speed limit or 85 percentile speed prior to work in miles per hour	200	30	60	60
35		250	35	70	70
40		305	40	80	80
45		360	45	90	90
50		425	50	100	100
55	495	55	110	110	
60	570	60	120	120	
65	645	65	130	130	
70	730	70	140	140	

* Approach speed based on the regulatory posted speed, not the advisory speed.

SIGN SPACING TABLE

ROAD TYPE	DISTANCE BETWEEN SIGNS (LNFT)		
	(A)	(B)	(C)
Urban and Rural 30 MPH and less	100	100	100
Urban and Rural 35 MPH to 50 MPH	350	350	350
Rural greater than 50 MPH	500	500	500
Expressway / Freeway	1000	1500	2640

NOTES:

- Final location and spacing of temporary traffic control devices may be changed to fit field conditions as approved.
- For operations that require a shoulder closure for a day or less, drums may be substituted with cones, type A in the work area as approved.
- Repeat signs on both sides of the roadway.
- Use minimum width shown unless otherwise specified in Section 156.

NO SCALE

U.S. DEPARTMENT OF TRANSPORTATION, FHWA OFFICE OF FEDERAL LANDS HIGHWAY	EFLHD DETAIL E635-08
TEMPORARY TRAFFIC CONTROL ONE WAY, TWO LANE ROAD SHOULDER WORK WITH MINOR ENCROACHMENT (WITHOUT BARRIER)	SPECIFICATION FP-24, FP-14 APPROVED FOR USE 06/2024

M:\Standards_and_Details\EFLHD_Detail_Drawings\FP-24\F635 - Temporary Traffic Control\E635-08.dgn [Sheet] 24 July 2024 7:03 PM