

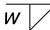
**FOOTING DATA TABLE**

POST SIZE	CONCRETE FOOTING	
	DIA.	MINIMUM DEPTH
2" X 2"	12"	3'

**BASE CONNECTION DATA TABLE**

POST SIZE	BOLT SPECIFICATIONS			BOND BREAKING PLATE DATA										
	Dia.	Length	Torque in-lbs	(A)	(B)	(C)	(D)	(E)	(F)	(R)	t <sub>1</sub>	t <sub>2</sub>	w	
2" X 2"	5/8"	2 1/2"	450	6 1/2"	4"	5"	1 3/4"	3/4"	1 1/8"	1 1/16"	5/8"	3/16"	3/16"	

**LEGEND:**

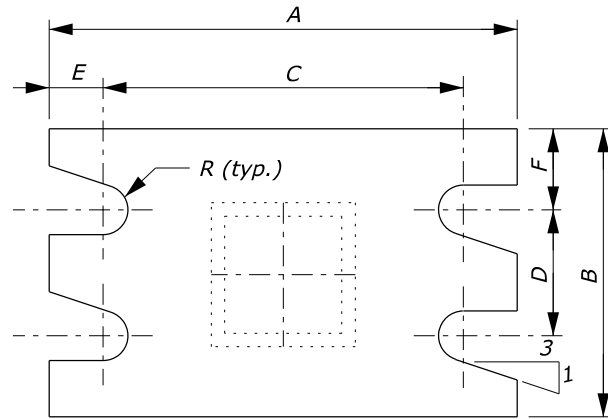
High Strength HS  
Weld triangle 

**FUSE PLATE DATA TABLE**

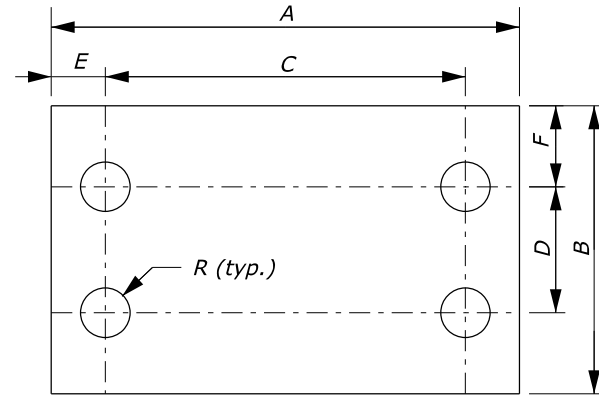
POST SIZE	(G)	(H)	(J)	(K)	(L)	(M)	(N)	d <sub>1</sub>	t <sub>3</sub>	c <sub>1</sub>	Bolt dia.	Torque ft-lbs
2" X 2"	4"	2 1/4"	1 1/8"	2"	7/8"	9/16"	5/8"	7/16"	1/4"	1/4"	3/8"	200

**NOTES:**

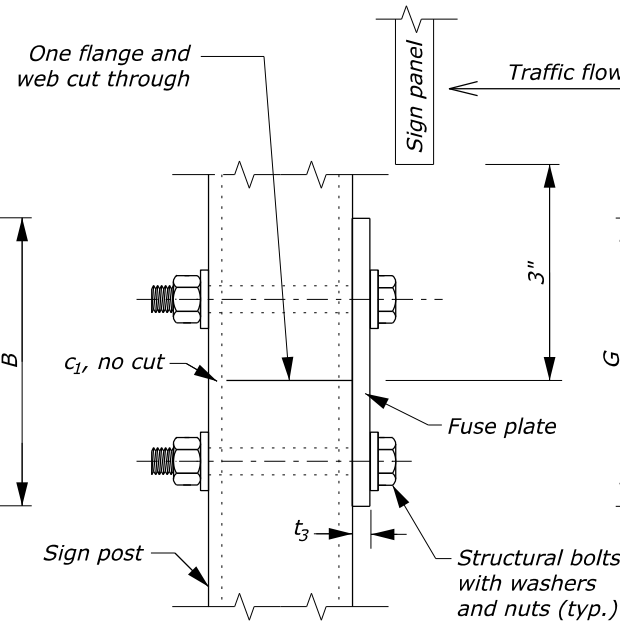
1. Breakaway sign support is not required for signs placed behind protective barriers.
2. Install breakaway assembly in the direction of major traffic.
3. Use 10 gage Class B corrosion resistant square steel posts. Paint brown any corrosion resistant steel posts that do not naturally change color to brown.
4. Use galvanized steel in breakaway plates, bond breaking plates, and fastening structural bolts with nuts and washers. Paint brown to match the appearance of the corrosion resistant steel posts.
5. Use the Multiple Post Breakaway detail on single posts where exposed to opposing lanes of traffic.
6. Use fuse plates on multiple post installations only.
7. Refer to Detail E633-01 for sign mounting details.



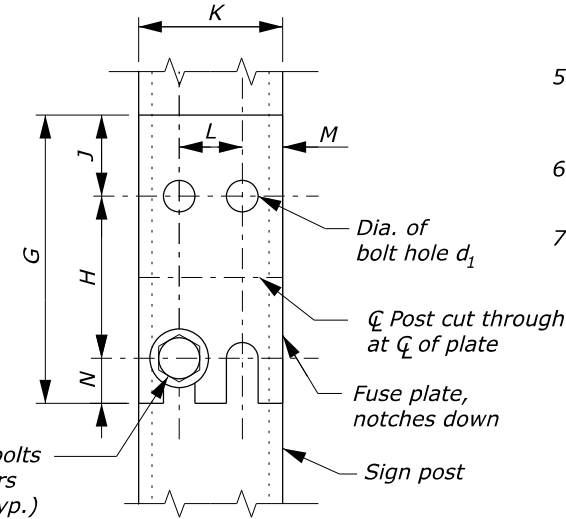
**SECTION A-A  
BREAKAWAY PLATE**



**BOND BREAKING PLATE**



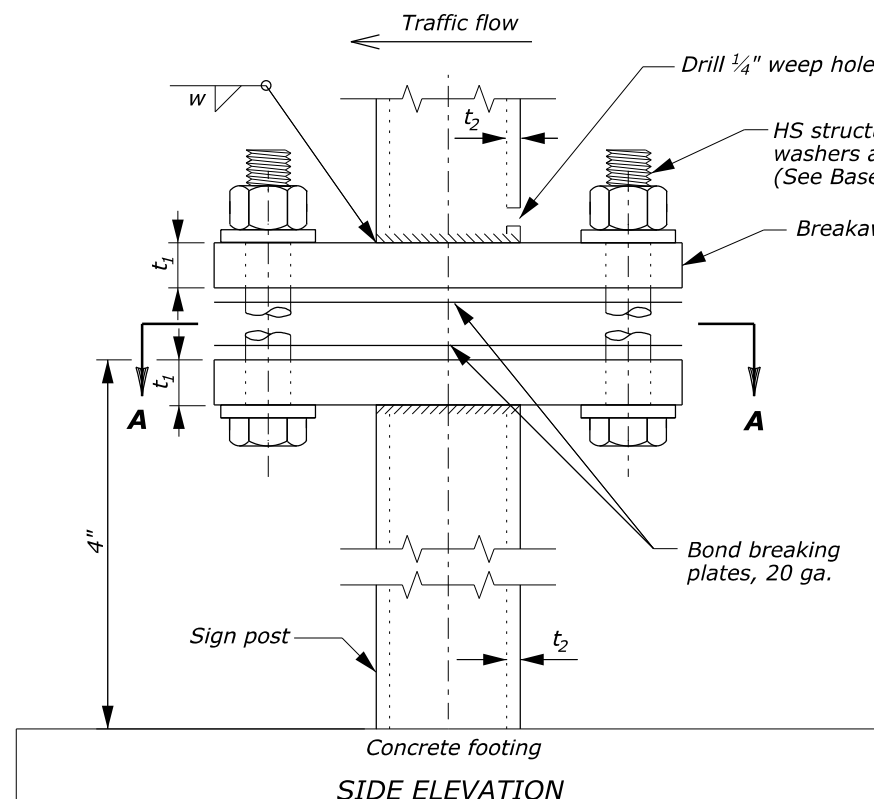
**SIDE ELEVATION**



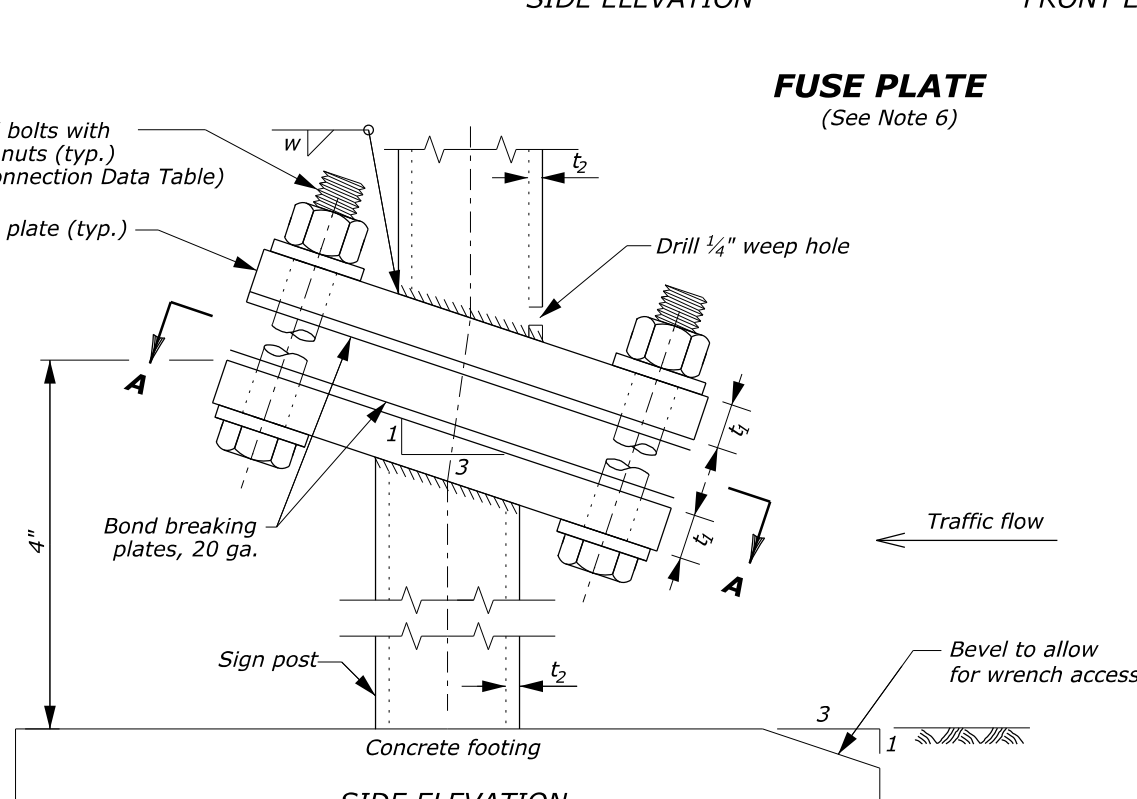
**FRONT ELEVATION**

**FUSE PLATE**

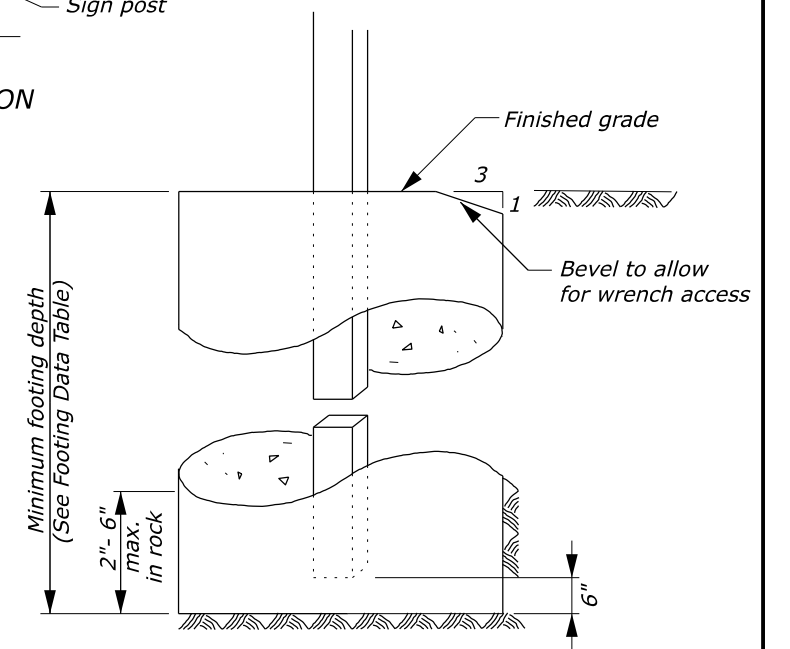
(See Note 6)



**MULTIPLE POST BREAKAWAY**  
(See Notes 4 and 5)



**SINGLE POST BREAKAWAY**  
(See Notes 4 and 5)



**CONCRETE FOOTING**

U.S. DEPARTMENT OF TRANSPORTATION, FHWA  
OFFICE OF FEDERAL LANDS HIGHWAY

**BREAKAWAY SIGN SUPPORT  
CORROSION RESISTANT STEEL**

EFLHD DETAIL  
E633-02

SPECIFICATION  
FP-24, FP-14

APPROVED FOR USE  
06/2024

NO SCALE