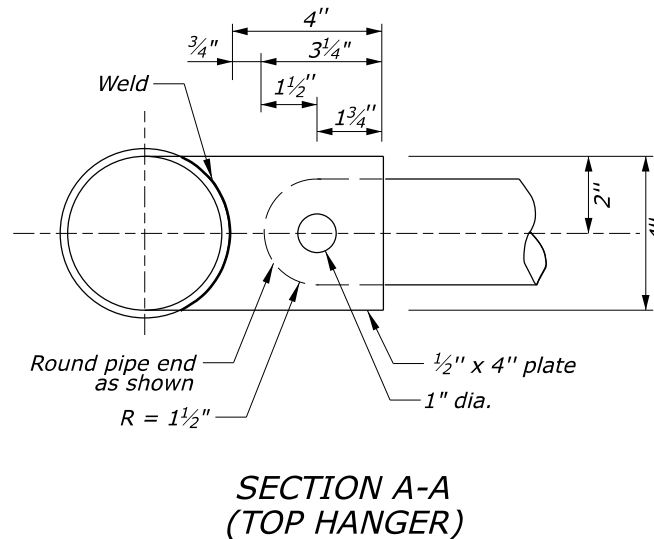
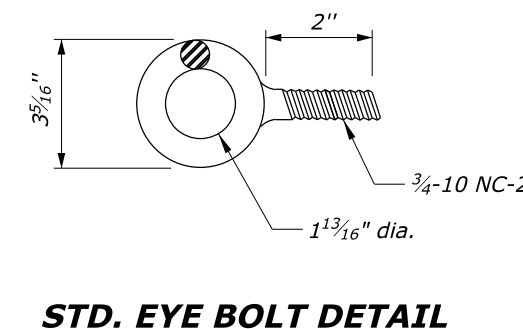
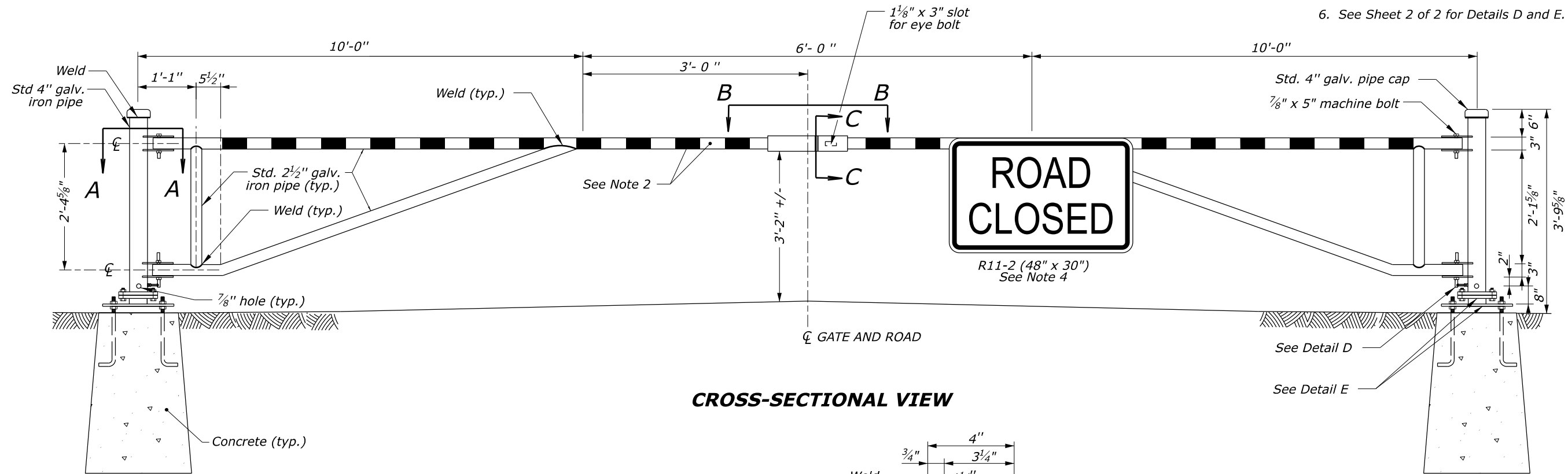
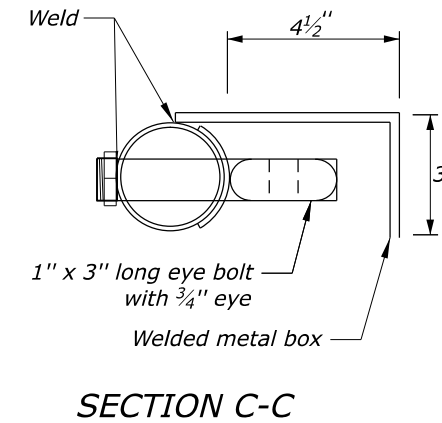
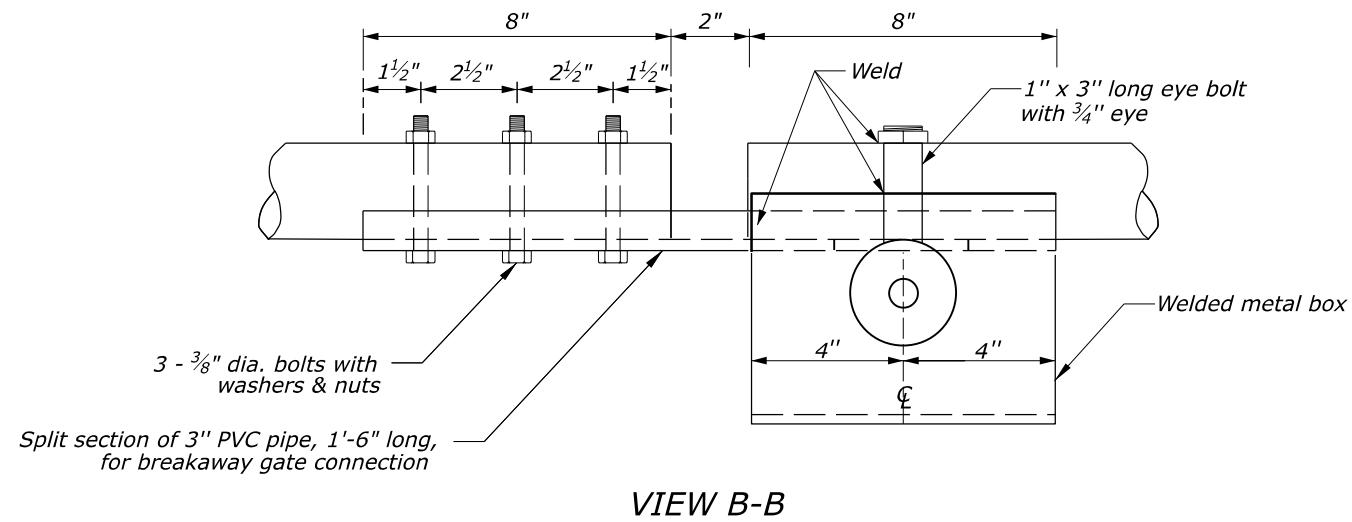


NOTES:

1. Close the top end of each rest posts with a 4 1/2-inch diameter by 1/8-inch thick steel plate formed to fit and welded in place.
2. Provide gate with retroreflective delineation consisting of vertical stripes alternating red and white at 16-inch intervals measured horizontally along the full width of the top horizontal bar on both sides.
3. Galvanize all metal parts.
4. Mount one "ROAD CLOSED" sign on the gate as shown. Center the sign over the lane carrying incoming traffic.
5. Alternate designs for adjustable gate post base, breakaway gate post, or breakaway gate connection may be submitted for approval at least 3 weeks before their intended use.
6. See Sheet 2 of 2 for Details D and E.



NO SCALE

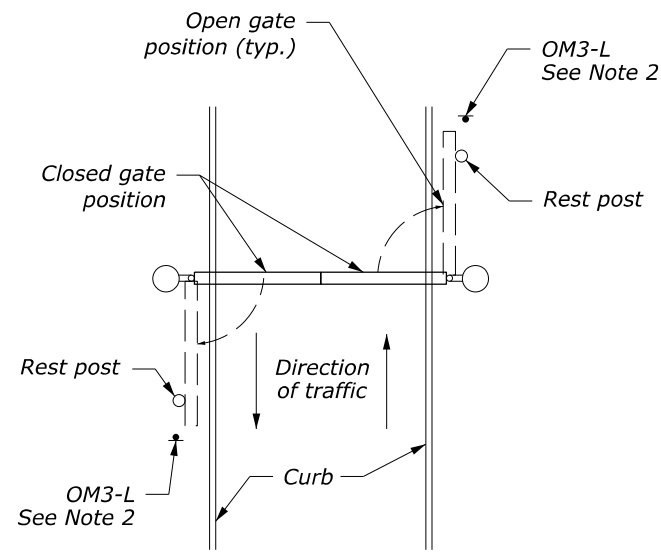
U.S. DEPARTMENT OF TRANSPORTATION, FHWA OFFICE OF FEDERAL LANDS HIGHWAY	EFLHD DETAIL E619-13
METAL GATE WITH BREAKAWAY SUPPORTS, 26-FOOT WIDTH	SPECIFICATION FP-24, FP-14
Sheet 1 of 2	APPROVED FOR USE 06/2024

LEGEND:

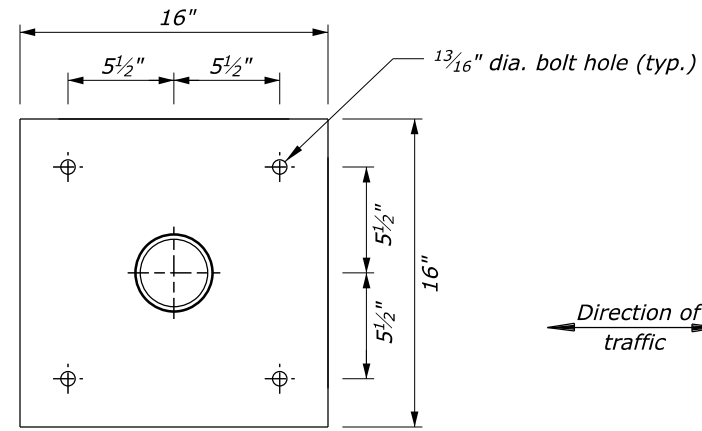
OM3-L: Left Object Marker, Type 3

NOTES:

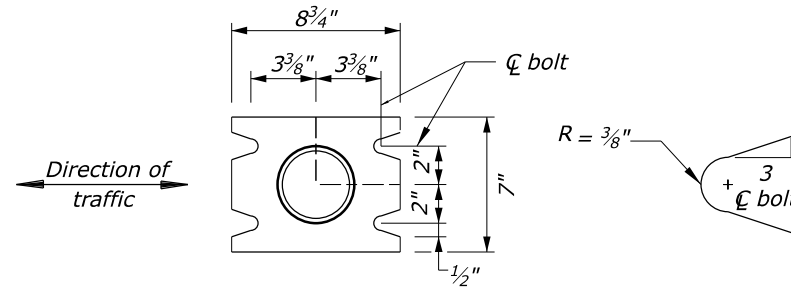
1. Provide washer contact areas for slip bases which are free of burrs, galvanizing runs or beads, or rough edges. Rub washer contact areas with paraffin immediately prior to the installation of slip bases.
2. Place object marker after installation of rest post and ensure it doesn't interfere with the gate arm when in open position.



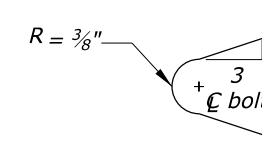
GATE PLAN



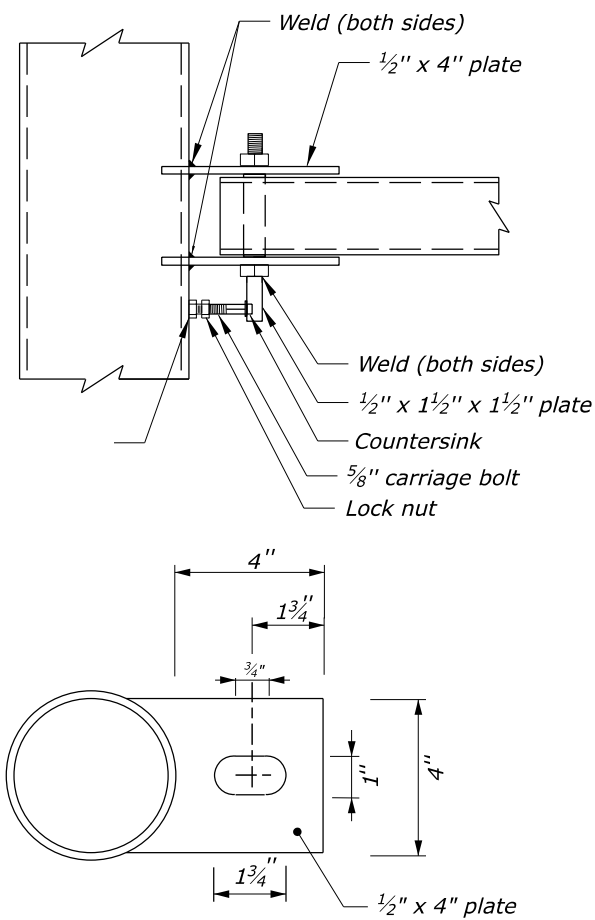
BASE PLATE DETAIL



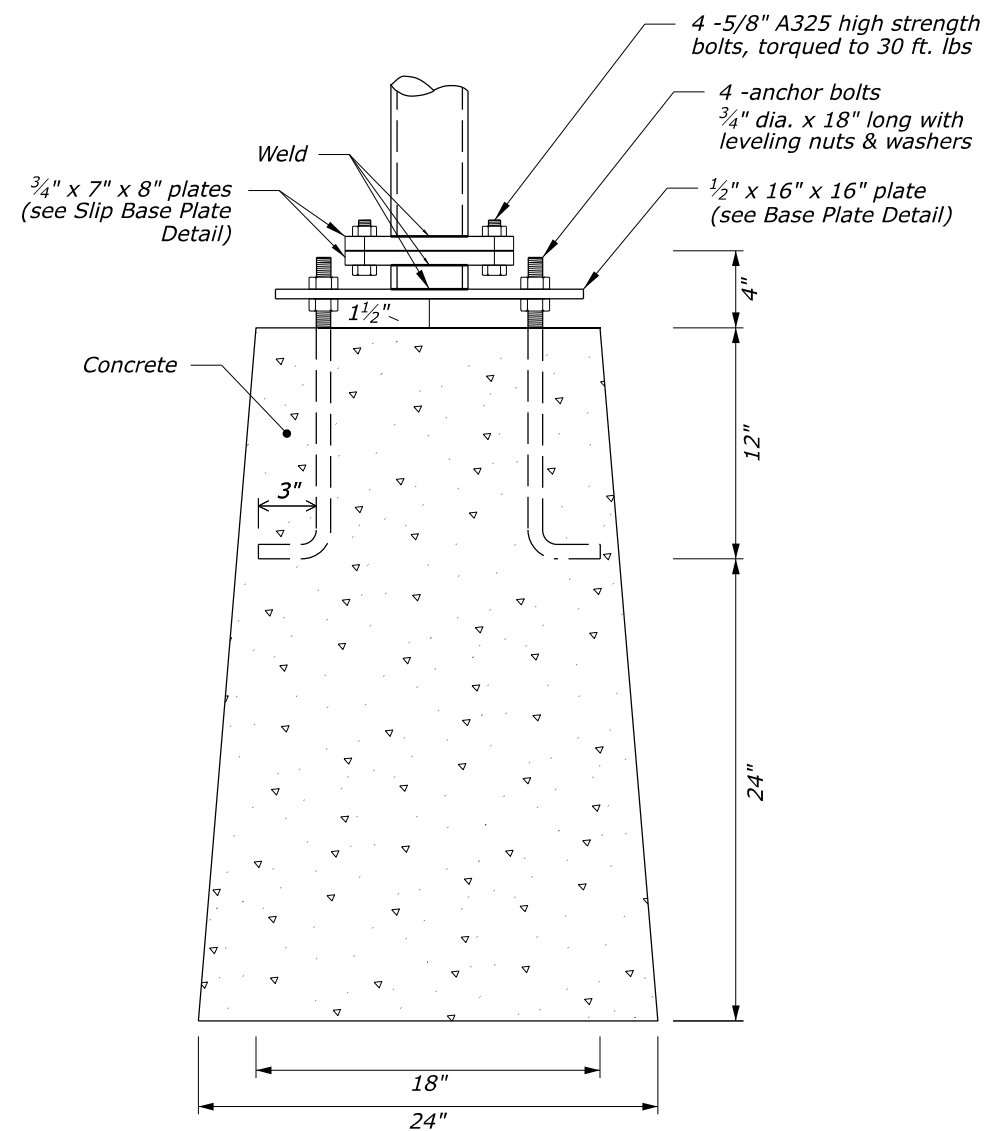
SLIP BASE PLATE DETAIL



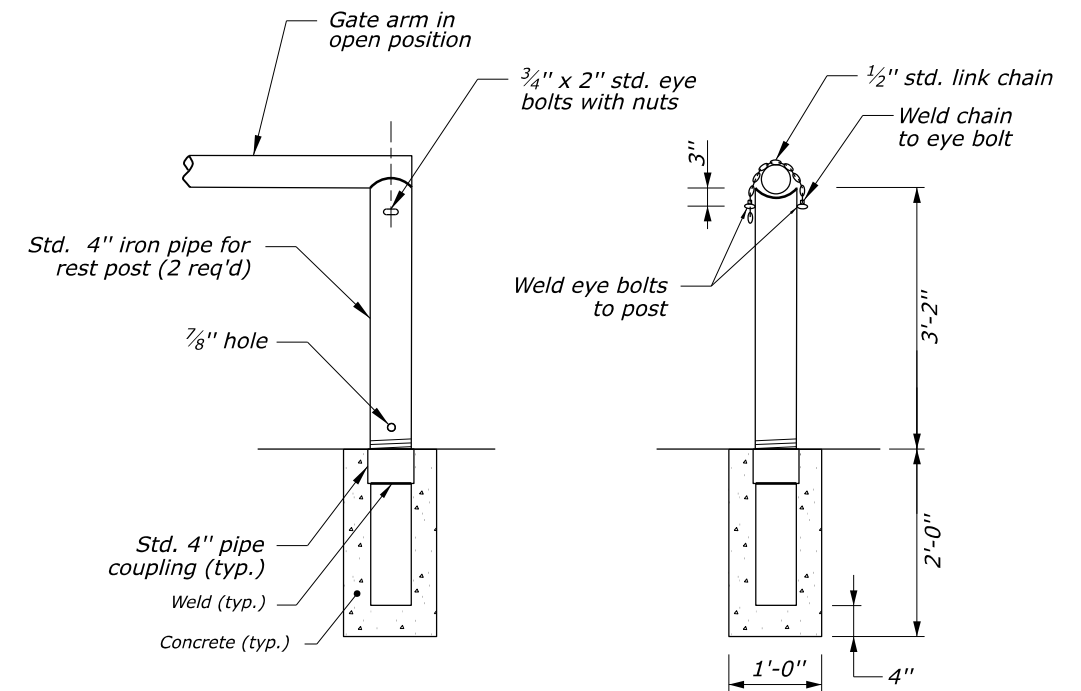
SLOT DETAIL



**DETAIL D
(BOTTOM HANGER)**



**DETAIL E
ADJUSTABLE BREAKAWAY GATE POST BASE
AND CONCRETE FOUNDATION**



REST POST DETAIL

NO SCALE

U.S. DEPARTMENT OF TRANSPORTATION, FHWA
OFFICE OF FEDERAL LANDS HIGHWAY
**METAL GATE WITH
BREAKAWAY SUPPORTS,
26-FOOT WIDTH**
Sheet 2 of 2

EFLHD DETAIL
E619-13
SPECIFICATION
FP-24, FP-14
APPROVED FOR USE
06/2024