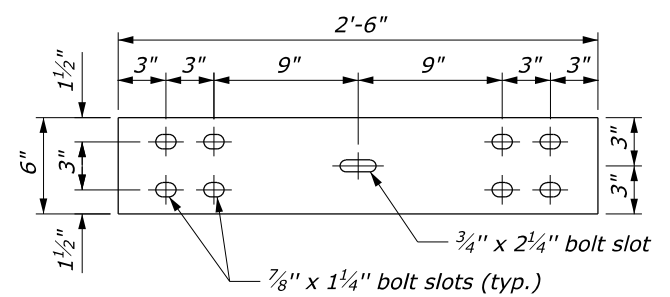
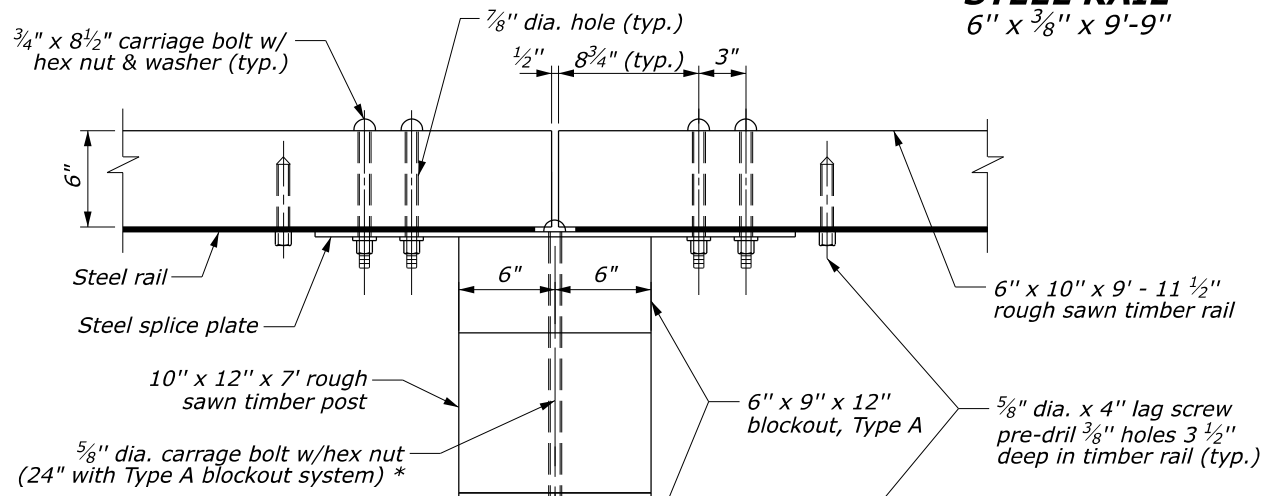
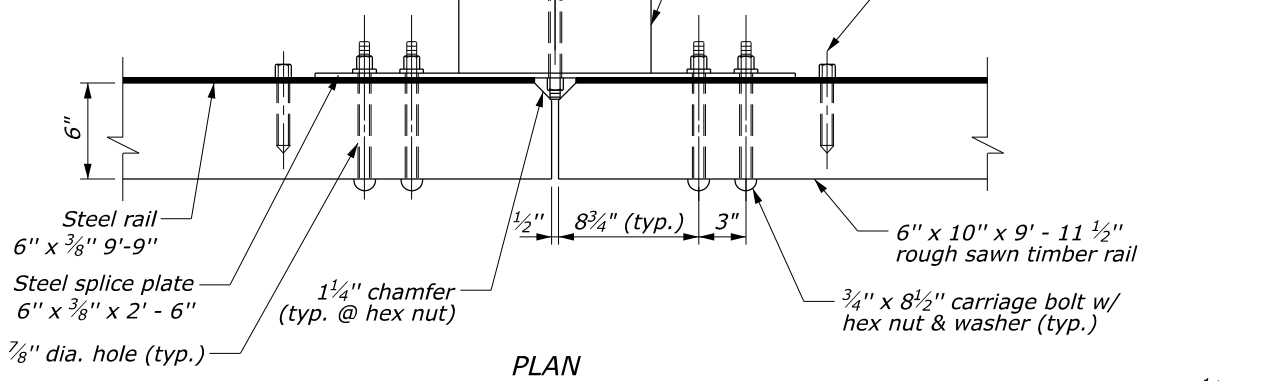


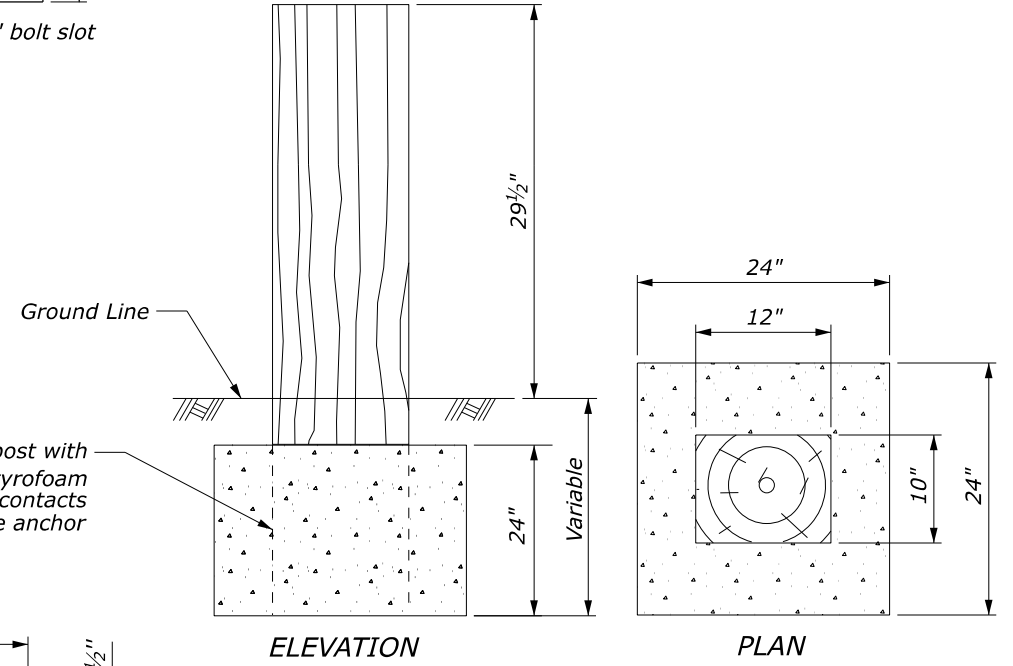
STEEL RAIL
6" x 3/8" x 9'-9"



STEEL SPLICE PLATE
6" x 3/8" x 2'-6"



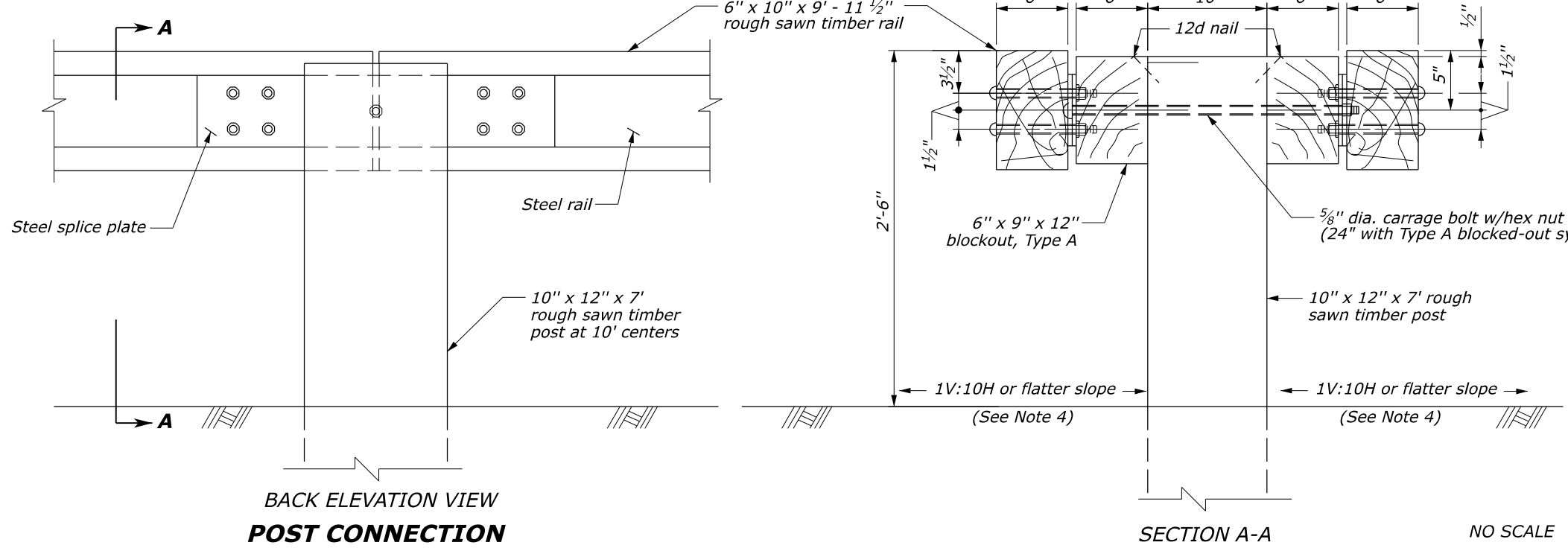
PLAN



ELEVATION

PLAN

CONCRETE ANCHOR FOR SHORT GUARDRAIL ASSEMBLY
(See Note 3)



BACK ELEVATION VIEW POST CONNECTION

SECTION A-A

NO SCALE

* Install carriage bolt and nut through the splice plates

NOTES:

1. Use weathering steel for all structural steel and fastener hardware as specified.
2. Place a terminal on both approach and trailing ends of median barrier installations. Use Type A blocked-out systems as shown in Standards 617-61 and 617-62.
3. Use no more than 3 short guardrail posts in a row. A 25-inch diameter round anchor may be used instead of the square anchor shown. A reduced size is acceptable in solid rock as approved.
4. In areas where the rail face is offset a minimum of 20 feet from the edge of travel lane, a maximum approach shoulder slope of 1V:6H may be used.

9 May 2024 4:16 PM M:\Standards_and_Details\EFLHD_Detail-Drawings\FP-24\617-Guardrail\std61770_detail.dgn [Sheet]

U.S. DEPARTMENT OF TRANSPORTATION, FHWA OFFICE OF FEDERAL LANDS HIGHWAY	EFLHD DETAIL E617-70
STEEL-BACKED TIMBER GUARDRAIL, MEDIAN TYPE A	SPECIFICATION FP-24, FP-14 APPROVED FOR USE 05/2024