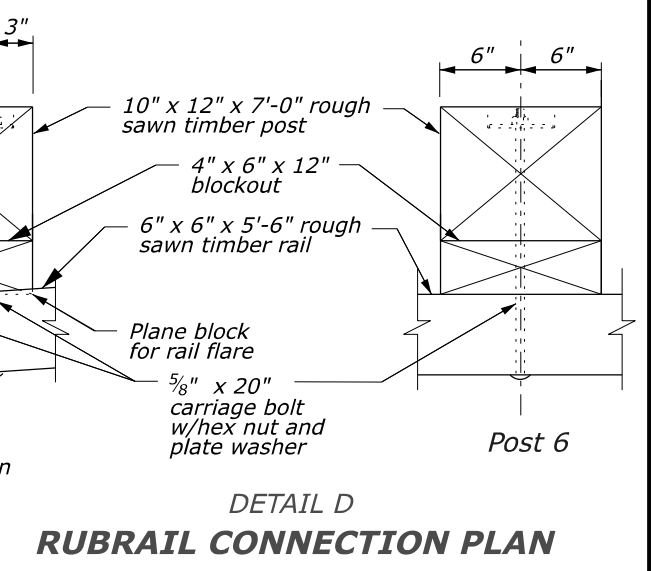
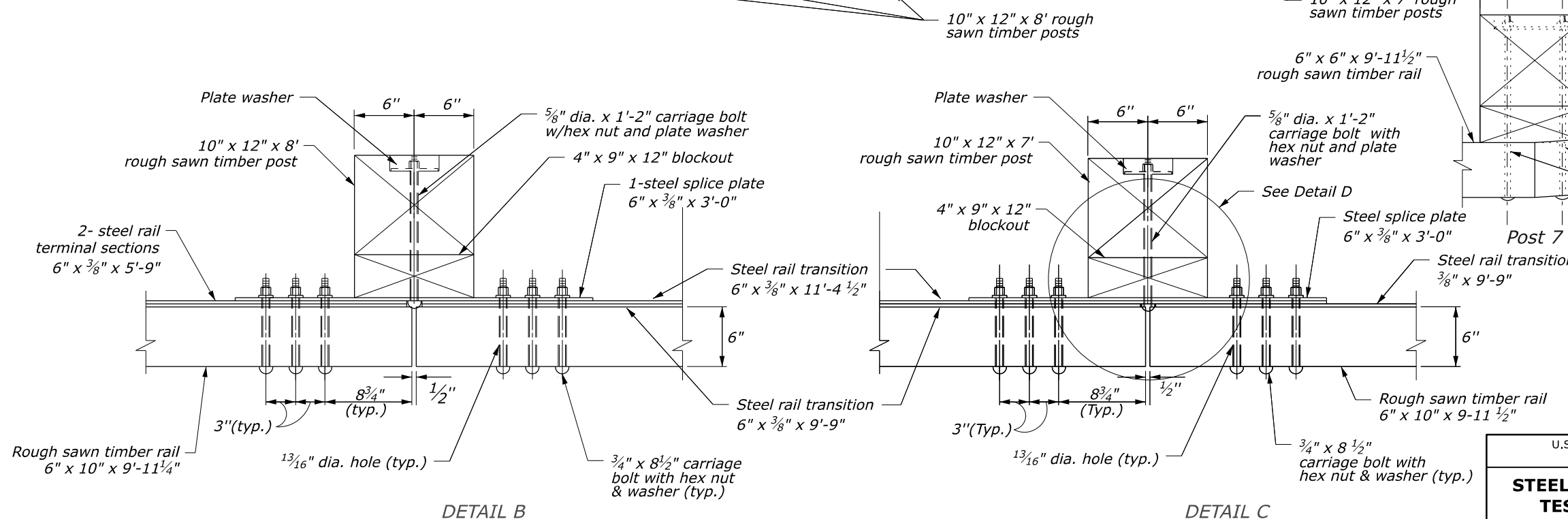
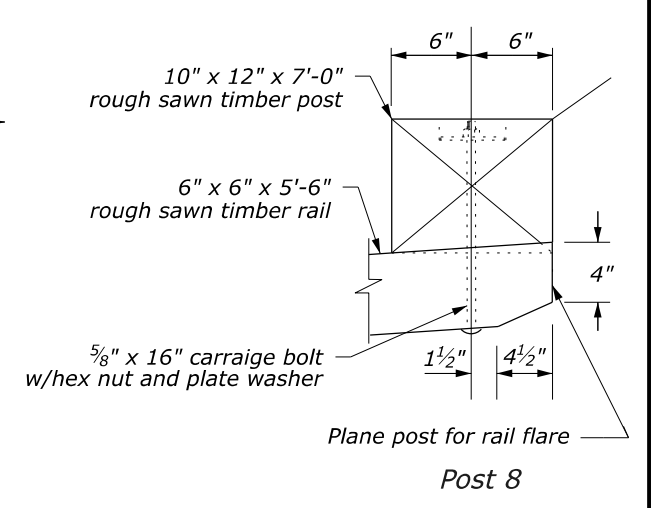


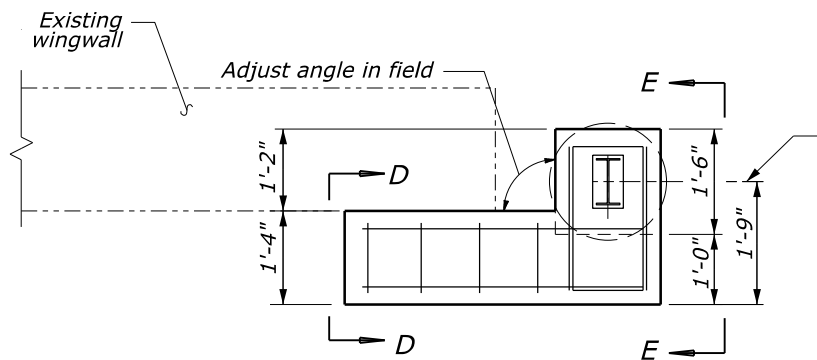
- NOTES:**
- See Sheet 2 of 3 for Sections A-A through C-C, and Detail A. See Sheet 3 of 3 for steel rail details.
 - Use weathering steel for all structural steel and fastener hardware.
 - Transition shown for curved end structure. For transition to a straight parapet end, install the timber rail so that the face of the timber rail is offset 1 inch towards the roadway.



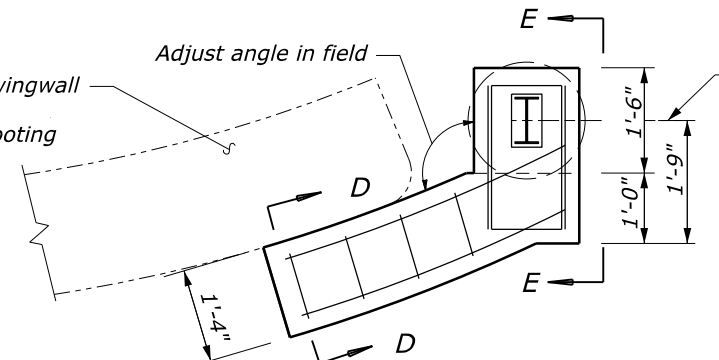
U.S. DEPARTMENT OF TRANSPORTATION, FHWA OFFICE OF FEDERAL LANDS HIGHWAY	EFLHD DETAIL E617-67
STEEL-BACKED TIMBER GUARDRAIL TEST LEVEL 2 TRANSITION TO STRAIGHT OR CURVED-END STRUCTURE	SPECIFICATION FP-14
Sheet 1 of 3	APPROVED FOR USE 05/2024

M:\Standards_and_Details\EFLHD-Detail-Drawings\FP-24\617-Guardrail\stg61767_detailfp14.dgn [Sheet 1 of 3] 1 May 2024 4:19 PM

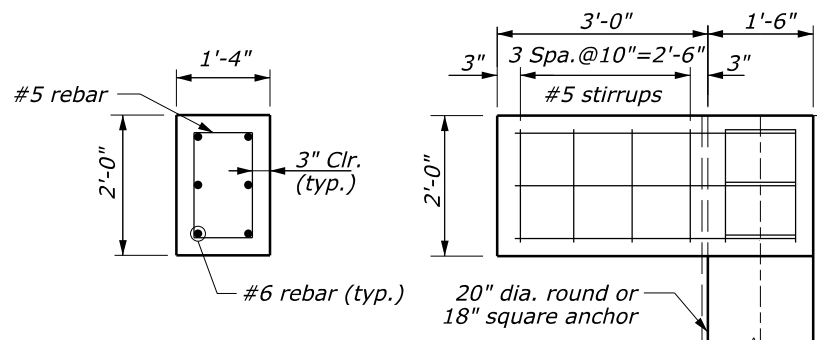
NO SCALE



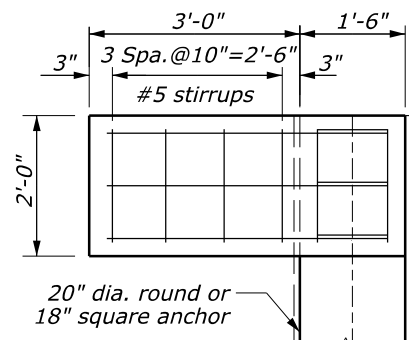
PLAN FOR NON-FLARED WINGWALL



PLAN FOR FLARED WINGWALL

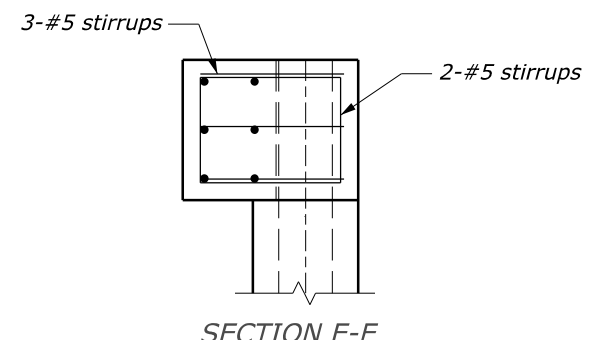


SECTION D-D
(Wingwall Not Shown)

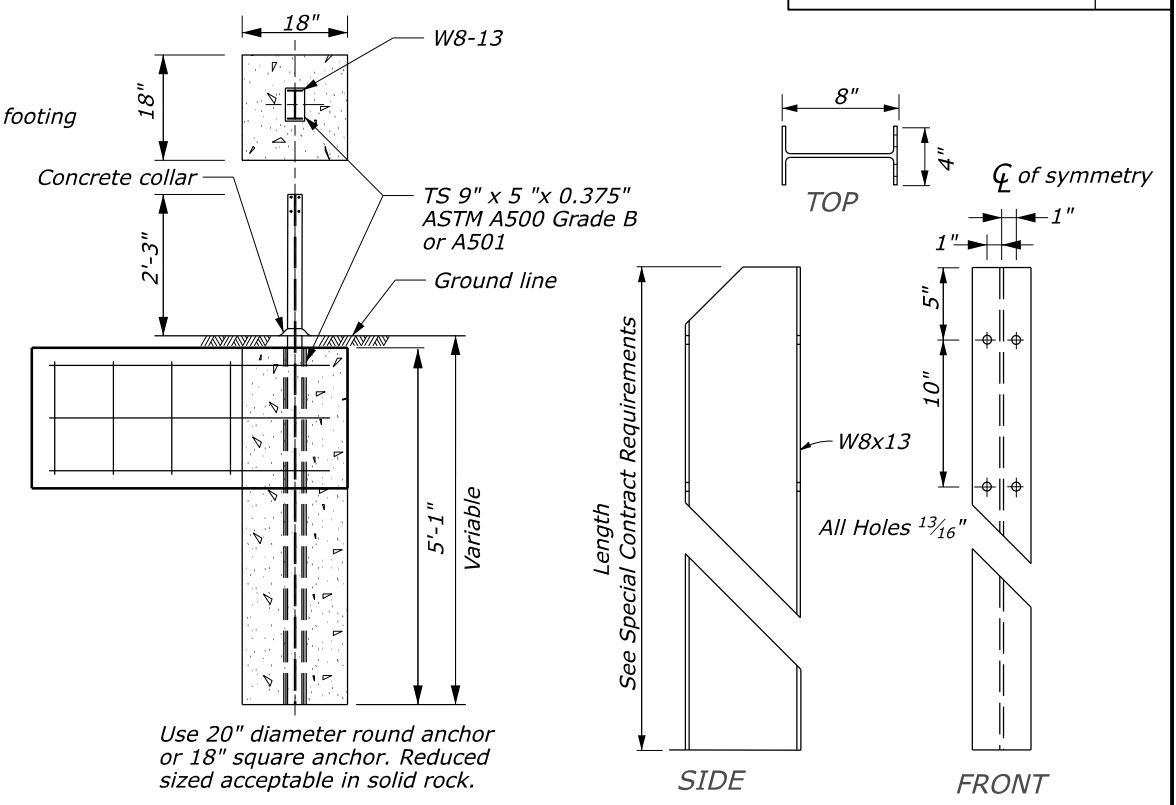


ELEVATION
(Wingwall Not Shown)

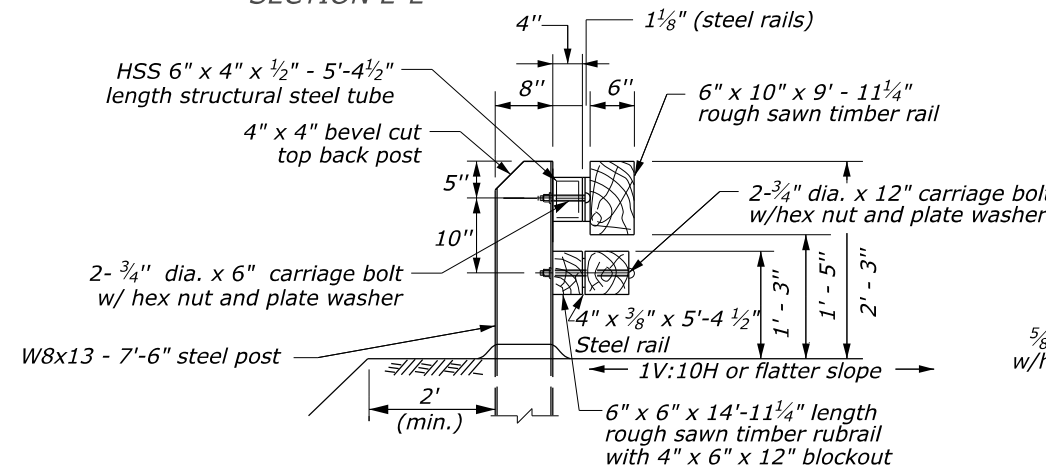
**CONNECTION TO CONCRETE ANCHOR
(Post Not Shown)**



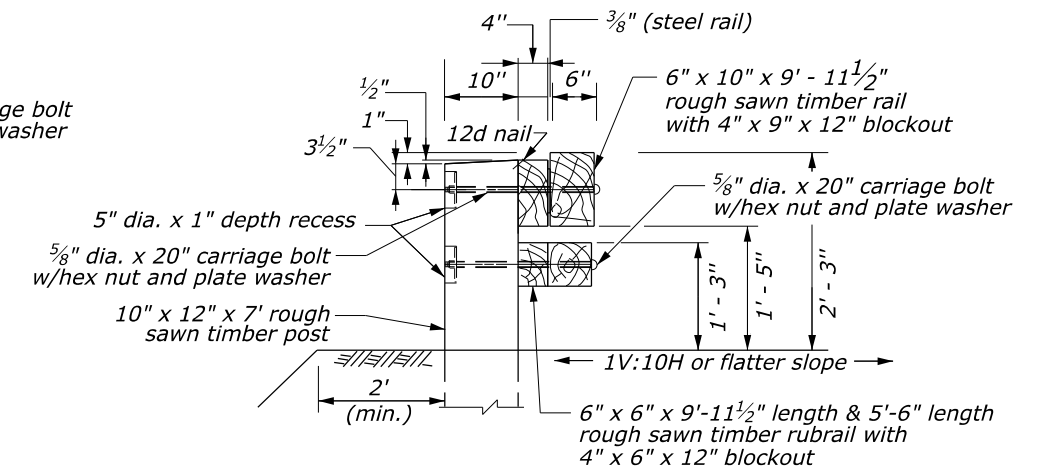
SECTION E-E



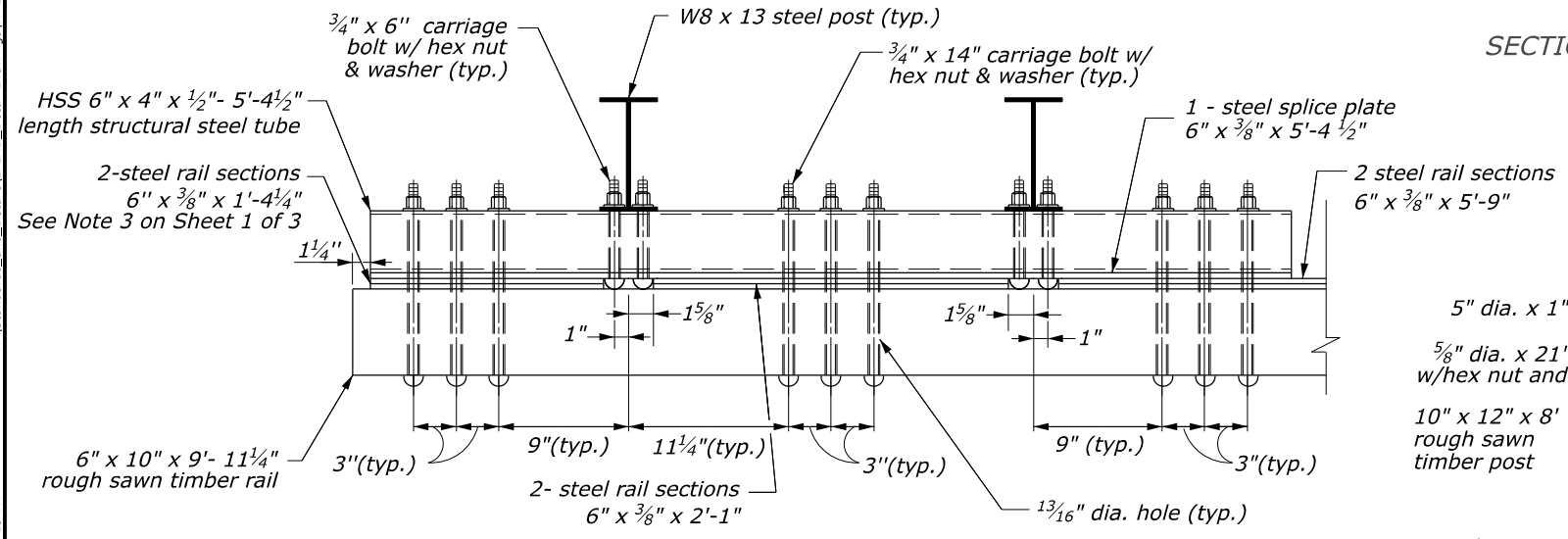
CONCRETE ANCHOR FOR GUARDRAIL POST



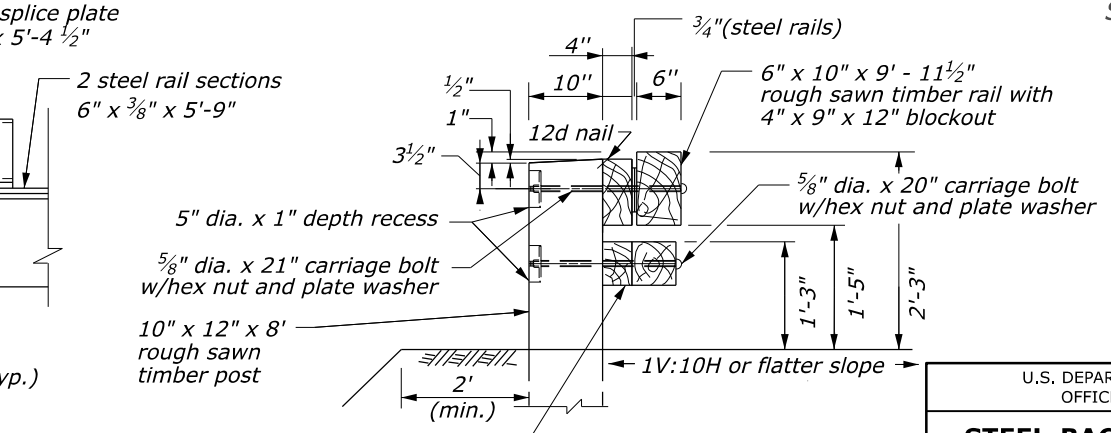
SECTION A-A



SECTION C-C



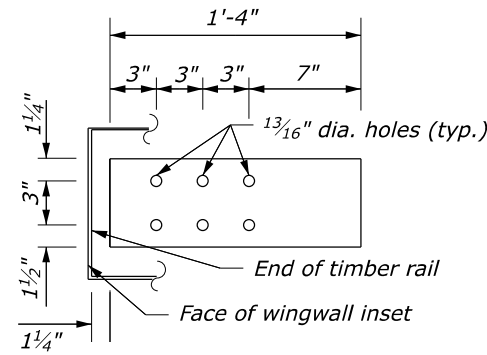
DETAIL A
POST CONNECTION PLAN



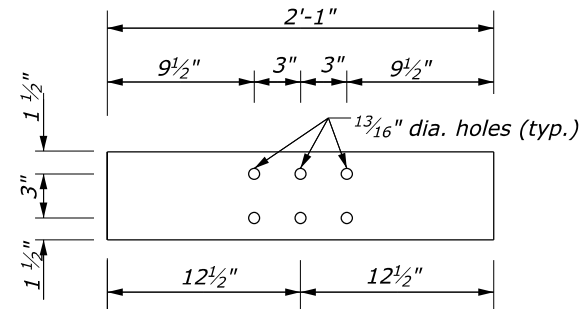
SECTION B-B
NO SCALE

U.S. DEPARTMENT OF TRANSPORTATION, FHWA OFFICE OF FEDERAL LANDS HIGHWAY		EFLHD DETAIL E617-67
STEEL-BACKED TIMBER GUARDRAIL TEST LEVEL 2 TRANSITION TO STRAIGHT OR CURVED-END STRUCTURE		SPECIFICATION FP-14
Sheet 2 of 3		APPROVED FOR USE 05/2024

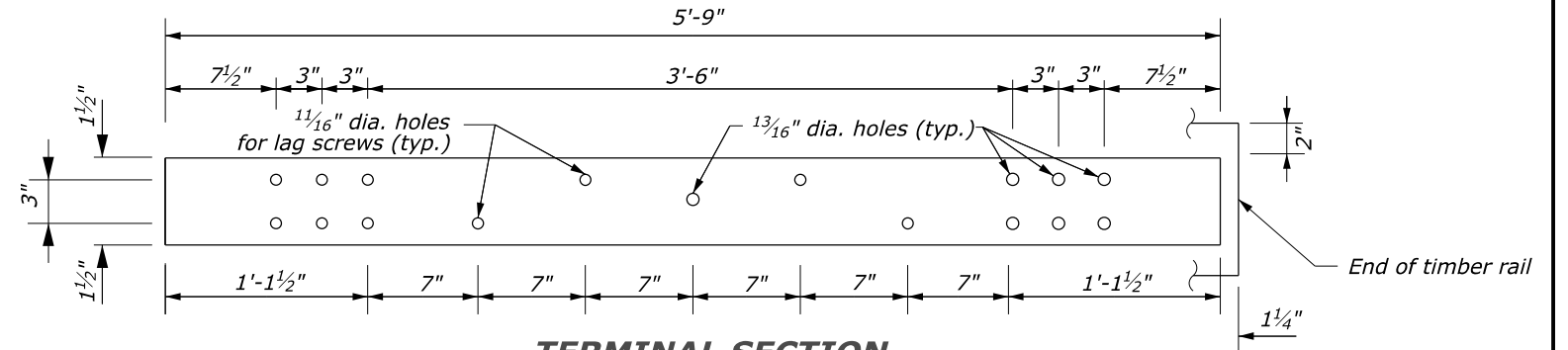
M:\Standards_and_Details\EFLHD_Details\FP-24\617-Guardrail\stg1767_detailfp14.dgn [Sheet2of3] 1 May 2024 4:19 PM



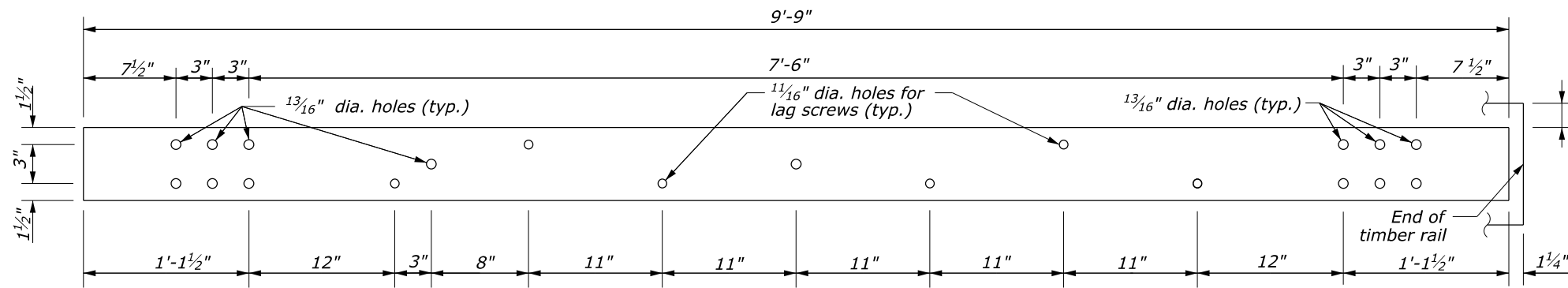
TERMINAL SECTION
6" x 3/8" x 1'-4"



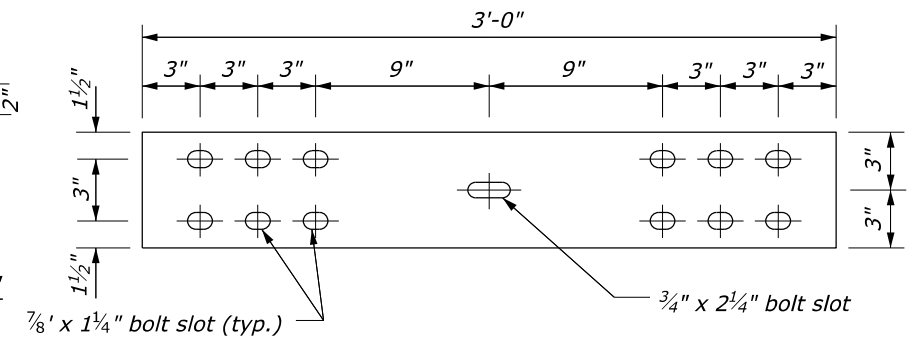
TERMINAL SECTION
6" x 3/8" x 2'-1"



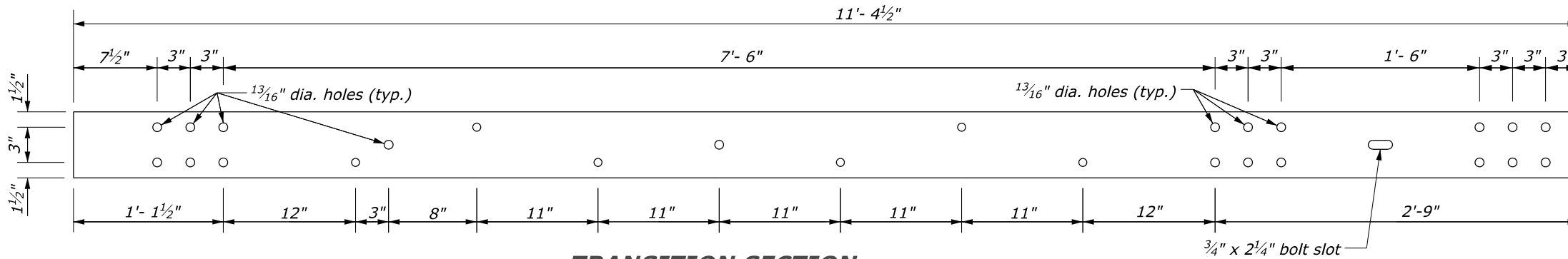
TERMINAL SECTION
6" x 3/8" x 5'-9"



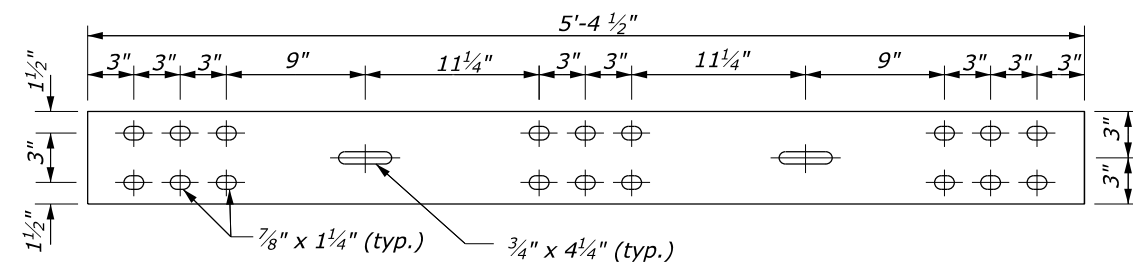
TRANSITION SECTION
6" x 3/8" x 9'-9"



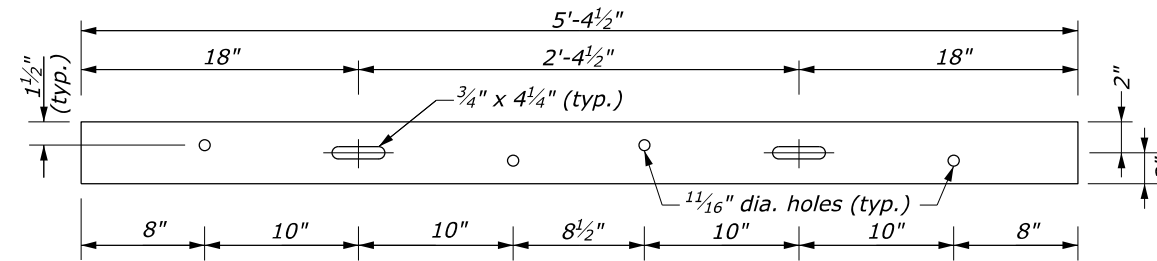
STEEL SPLICE PLATE
6" x 3/8" x 3'-0"



TRANSITION SECTION
6" x 3/8" x 11'-4 1/2"



STEEL SPLICE PLATE
6" x 3/8" x 5'-4 1/2"



TERMINAL SECTION (RUBRAIL)
4" x 3/8" x 5'-4 1/2"

NO SCALE

U.S. DEPARTMENT OF TRANSPORTATION, FHWA OFFICE OF FEDERAL LANDS HIGHWAY		EFLHD DETAIL E617-67
STEEL-BACKED TIMBER GUARDRAIL TEST LEVEL 2 TRANSITION TO STRAIGHT OR CURVED-END STRUCTURE		SPECIFICATION FP-14
Sheet 3 of 3		APPROVED FOR USE 05/2024