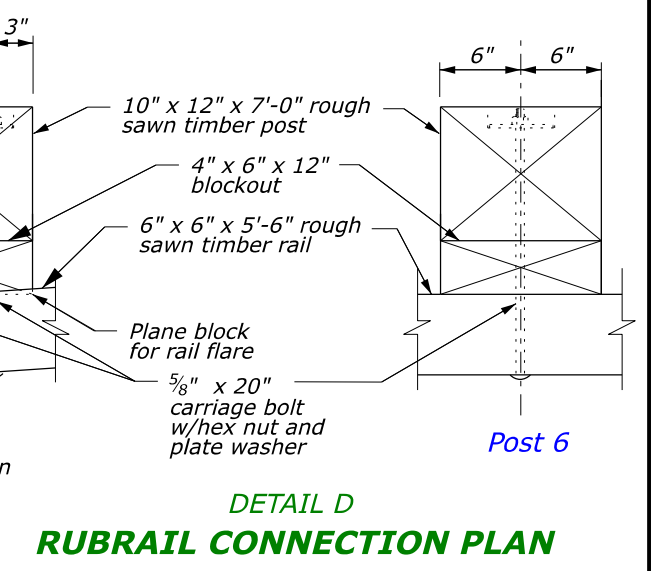
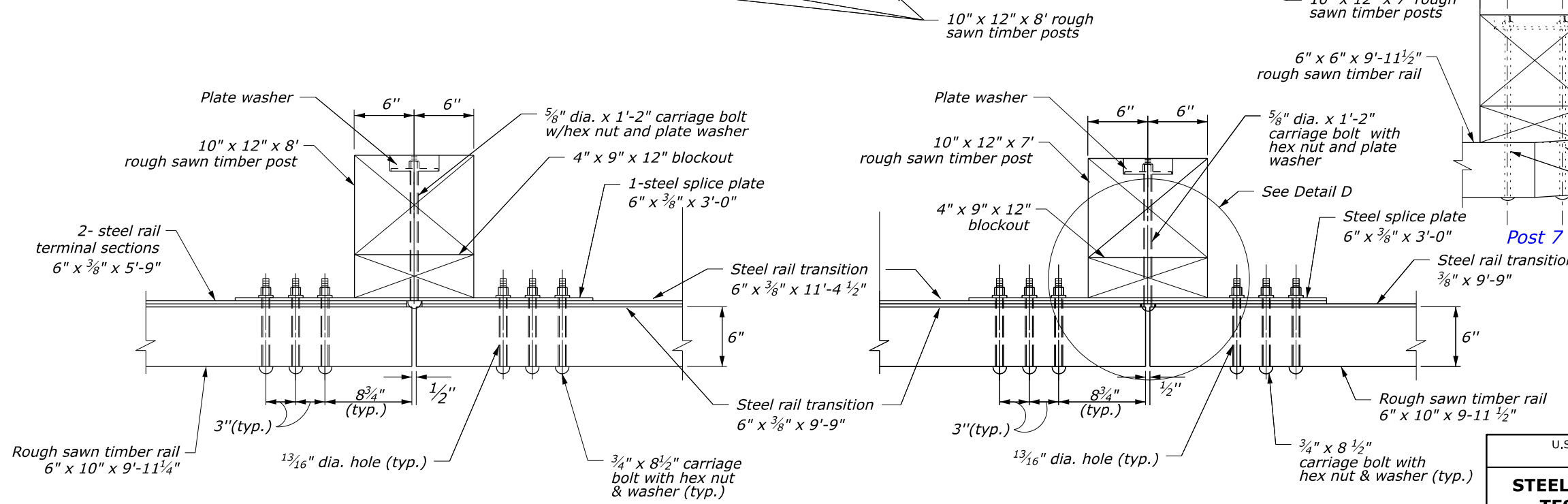
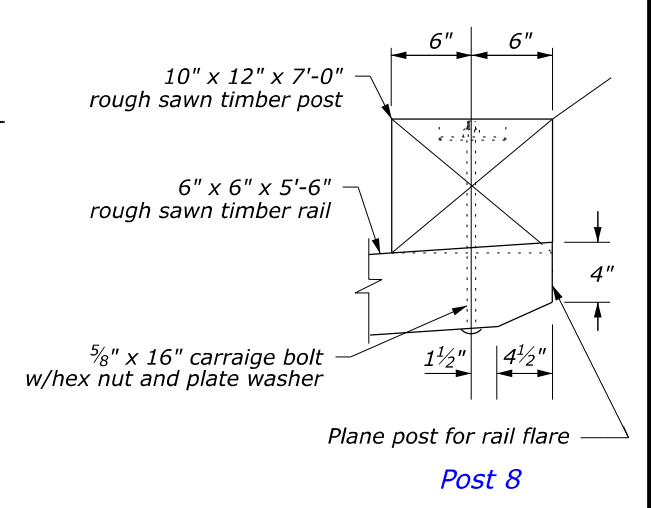
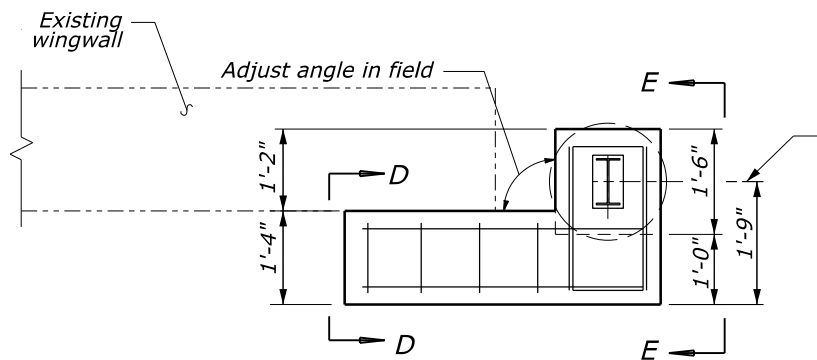


- NOTES:**
- See Sheet 2 of 3 for Sections A-A through C-C, and Detail A. See Sheet 3 of 3 for steel rail details.
  - Use weathering steel for all structural steel and fastener hardware.
  - Transition shown for curved end structure. For transition to a straight parapet end, install the timber rail so that the face of the timber rail is offset 1 inch towards the roadway.

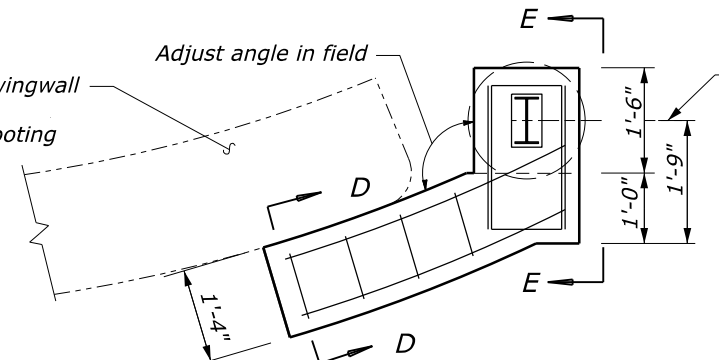


U.S. DEPARTMENT OF TRANSPORTATION, FHWA OFFICE OF FEDERAL LANDS HIGHWAY		EFLHD DETAIL E617-67
<b>STEEL-BACKED TIMBER GUARDRAIL TEST LEVEL 2 TRANSITION TO STRAIGHT OR CURVED-END STRUCTURE</b>		SPECIFICATION FP-24
Sheet 1 of 3		APPROVED FOR USE 05/2024

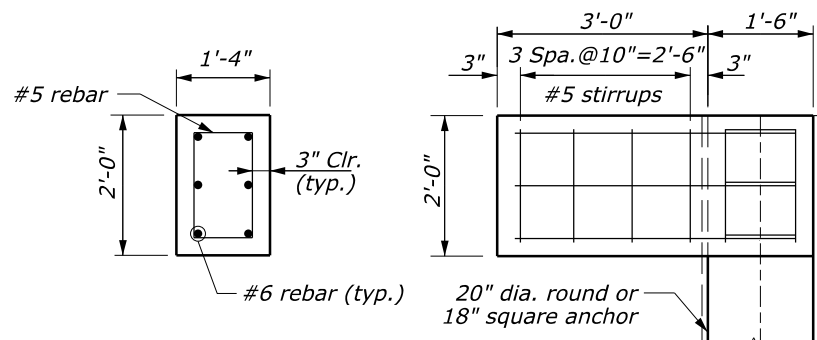
M:\Standards\_and\_Details\EFLHD-Detail-Drawings\FP-24\617-Guardrail\stg1767\_detail.dgn [Sheet 1 of 3] 13 June 2024 8:35 AM



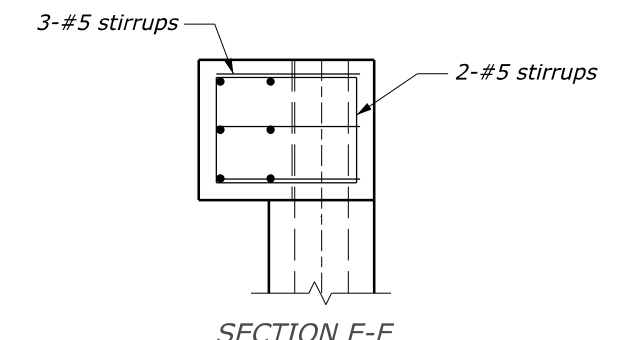
**PLAN FOR NON-FLARED WINGWALL**



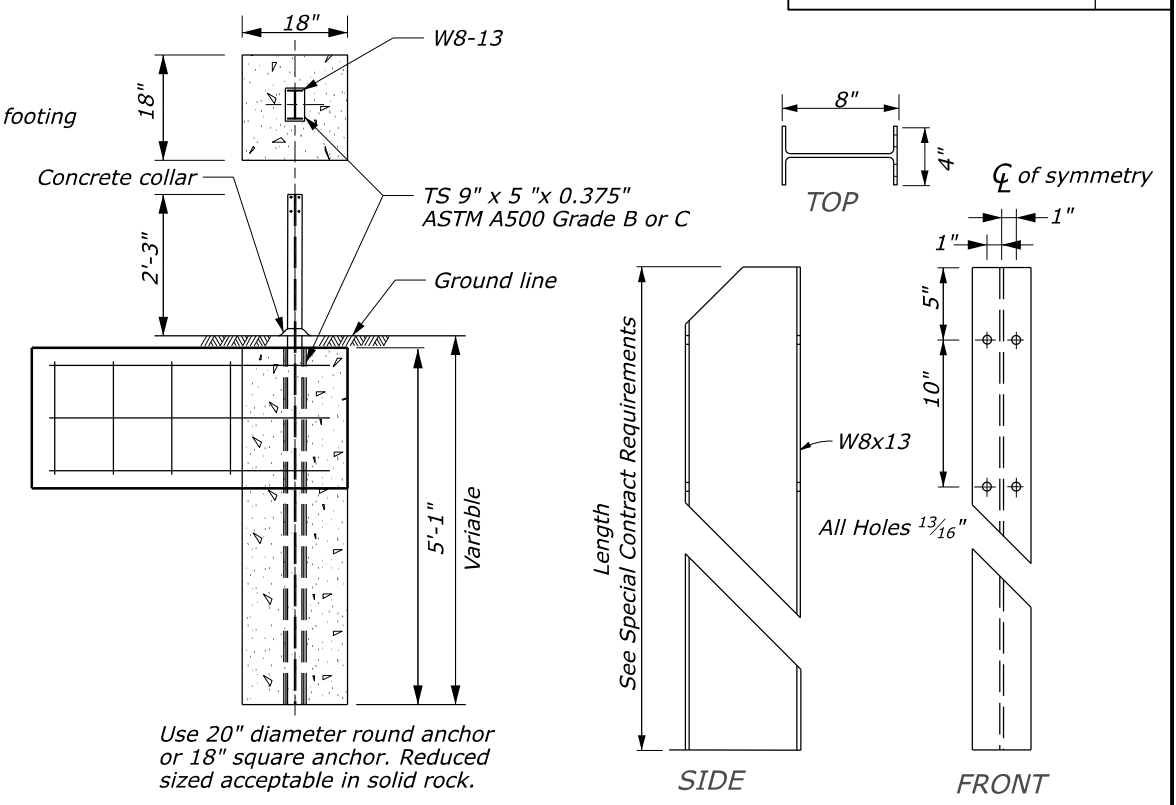
**PLAN FOR FLARED WINGWALL**



SECTION D-D  
(Wingwall Not Shown)



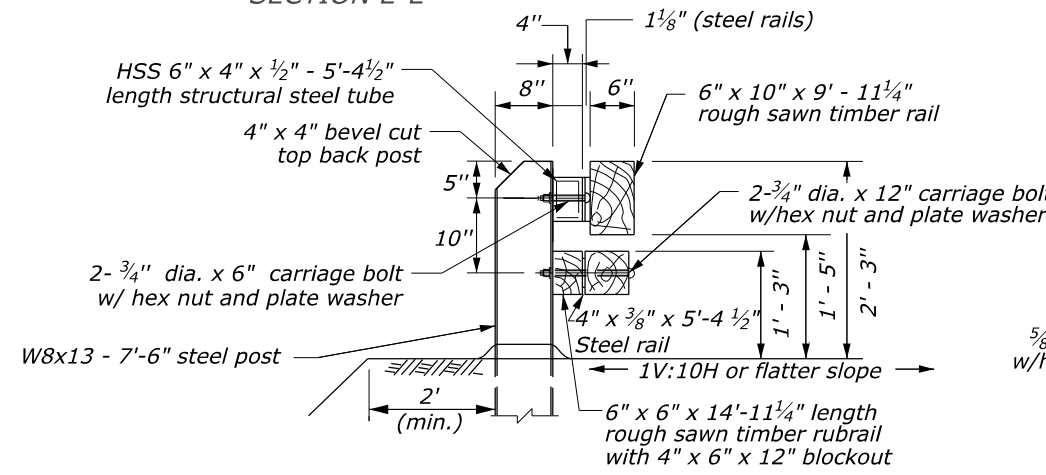
SECTION E-E



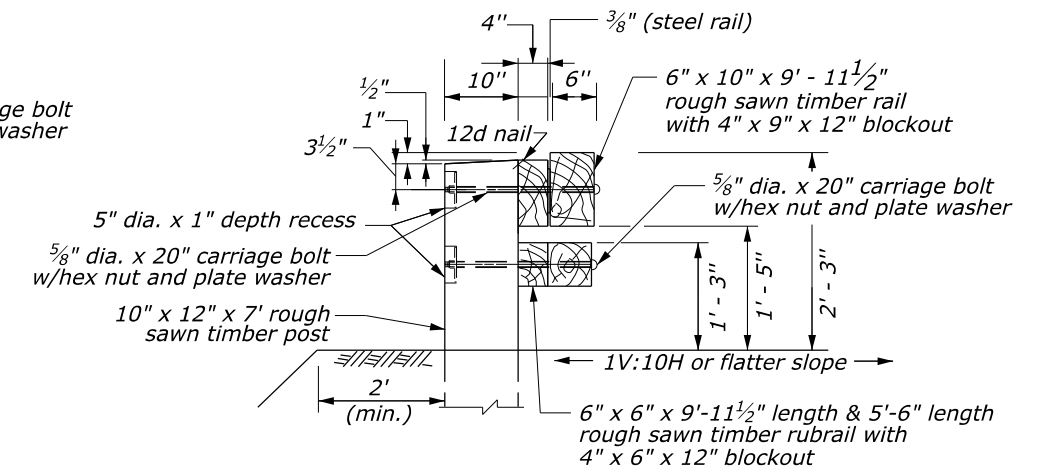
Use 20" diameter round anchor or 18" square anchor. Reduced sized acceptable in solid rock.

**CONCRETE ANCHOR FOR GUARDRAIL POST**

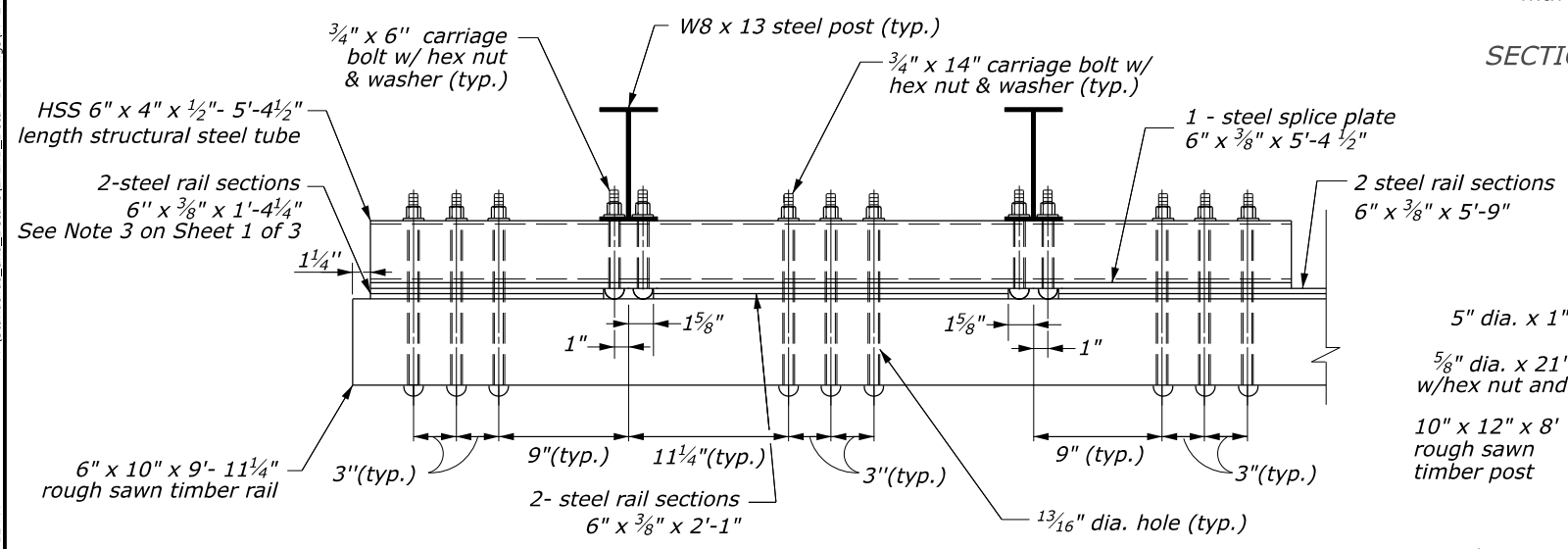
**CONNECTION TO CONCRETE ANCHOR (Post Not Shown)**



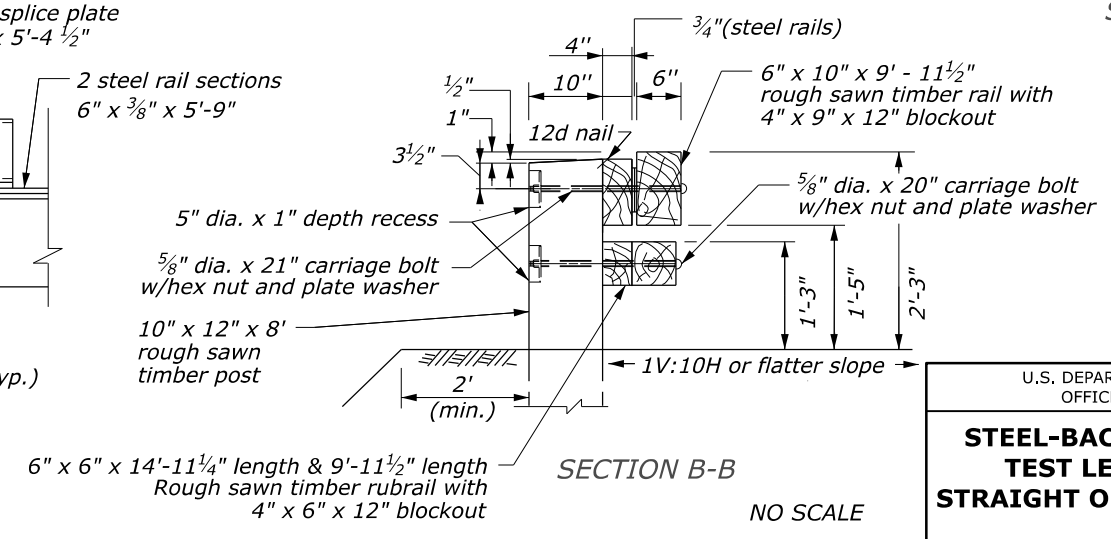
SECTION A-A



SECTION C-C



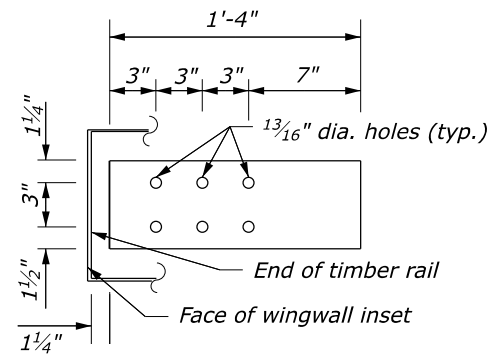
DETAIL A  
**POST CONNECTION PLAN**



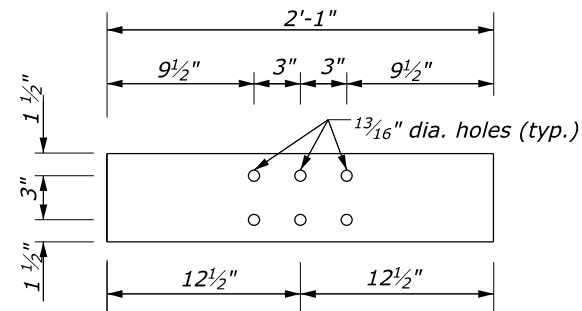
SECTION B-B  
NO SCALE

U.S. DEPARTMENT OF TRANSPORTATION, FHWA OFFICE OF FEDERAL LANDS HIGHWAY		EFLHD DETAIL E617-67
<b>STEEL-BACKED TIMBER GUARDRAIL TEST LEVEL 2 TRANSITION TO STRAIGHT OR CURVED-END STRUCTURE</b>		SPECIFICATION FP-24
Sheet 2 of 3		APPROVED FOR USE 05/2024

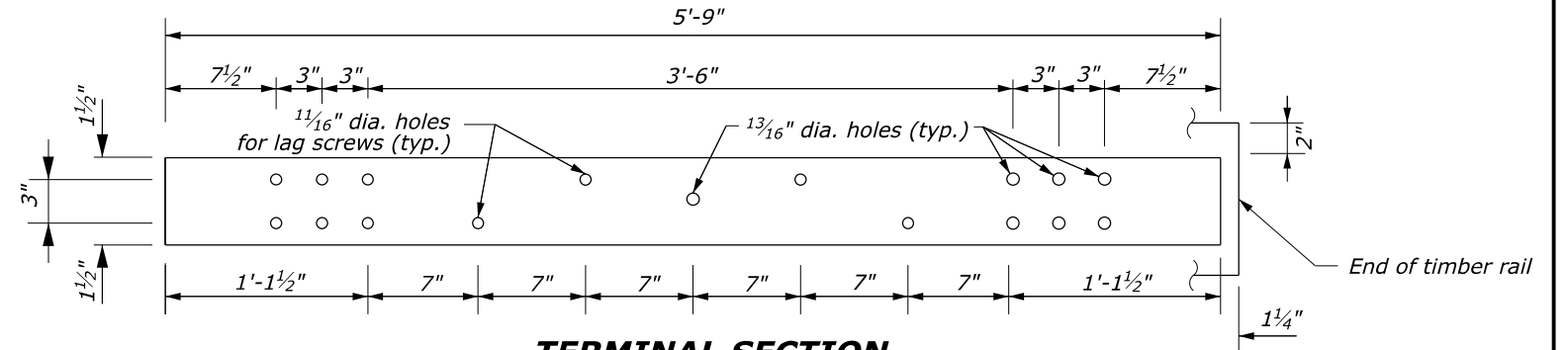
M:\Standards\_and\_Details\EFLHD-Detail-Drawings\FP-24\617-Guardrail\617-67-detail.dgn [Sheet2of3] 1 May 2024 4:12 PM



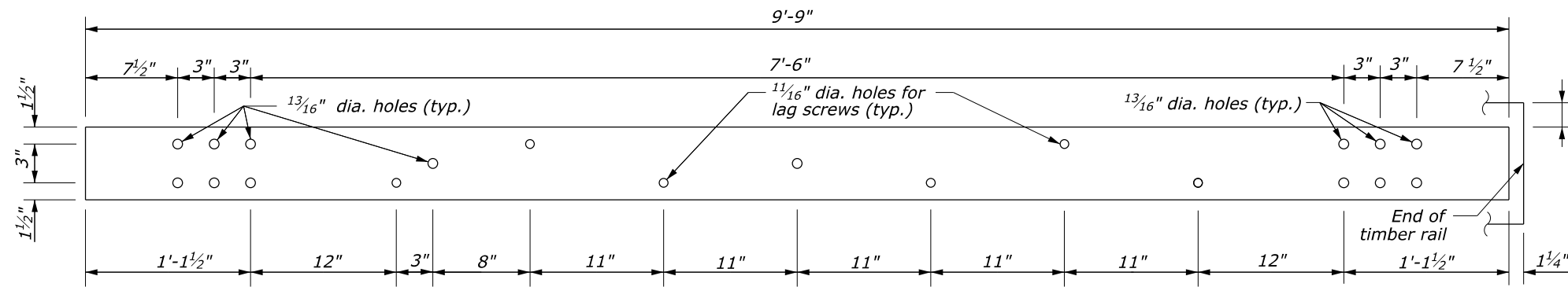
**TERMINAL SECTION**  
**6" x 3/8" x 1'-4"**



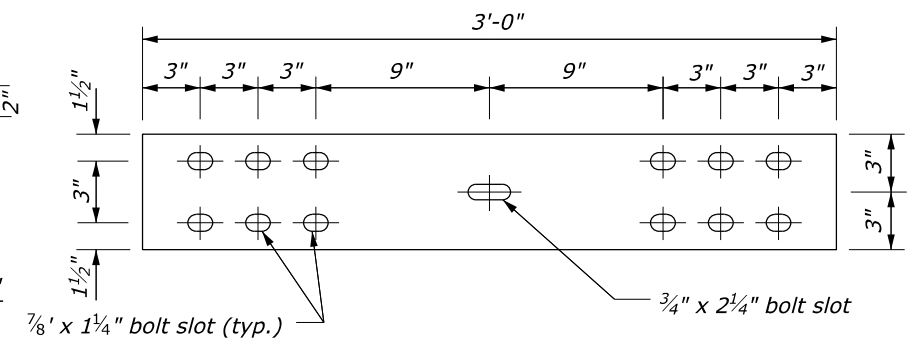
**TERMINAL SECTION**  
**6" x 3/8" x 2'-1"**



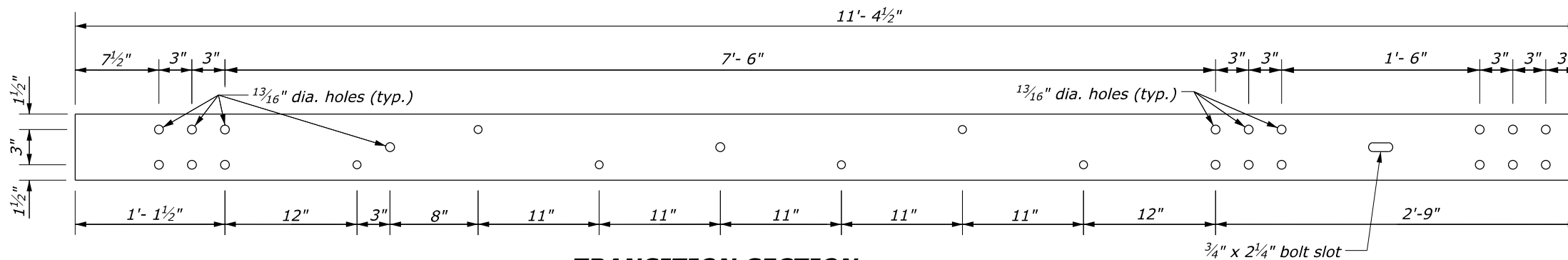
**TERMINAL SECTION**  
**6" x 3/8" x 5'-9"**



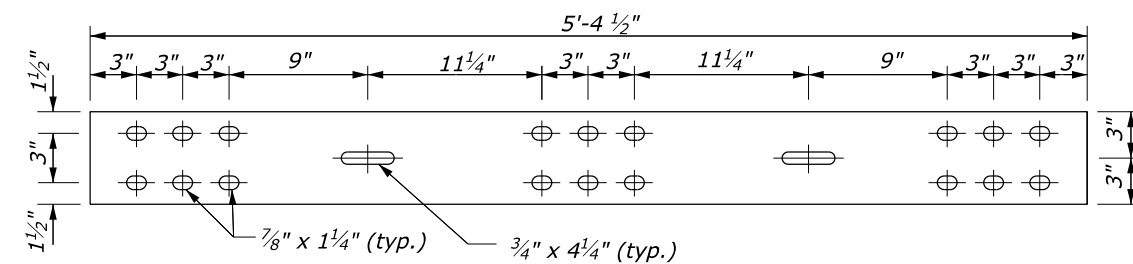
**TRANSITION SECTION**  
**6" x 3/8" x 9'-9"**



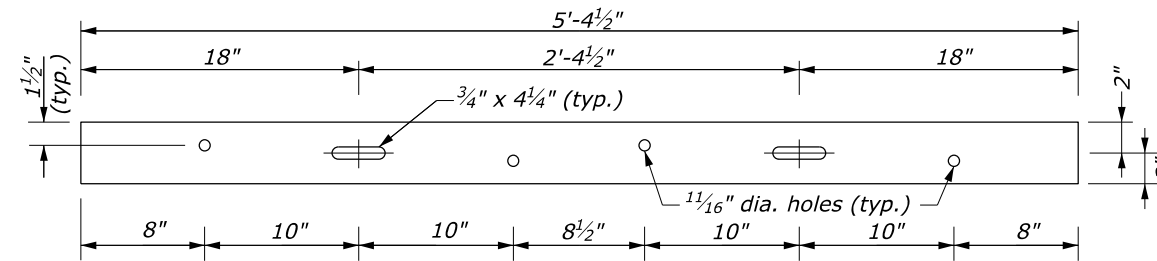
**STEEL SPLICE PLATE**  
**6" x 3/8" x 3'-0"**



**TRANSITION SECTION**  
**6" x 3/8" x 11'-4 1/2"**



**STEEL SPLICE PLATE**  
**6" x 3/8" x 5'-4 1/2"**



**TERMINAL SECTION (RUBRAIL)**  
**4" x 3/8" x 5'-4 1/2"**

NO SCALE

U.S. DEPARTMENT OF TRANSPORTATION, FHWA OFFICE OF FEDERAL LANDS HIGHWAY		EFLHD DETAIL E617-67
<b>STEEL-BACKED TIMBER GUARDRAIL TEST LEVEL 2 TRANSITION TO STRAIGHT OR CURVED-END STRUCTURE</b>		SPECIFICATION FP-24
Sheet 3 of 3		APPROVED FOR USE 05/2024